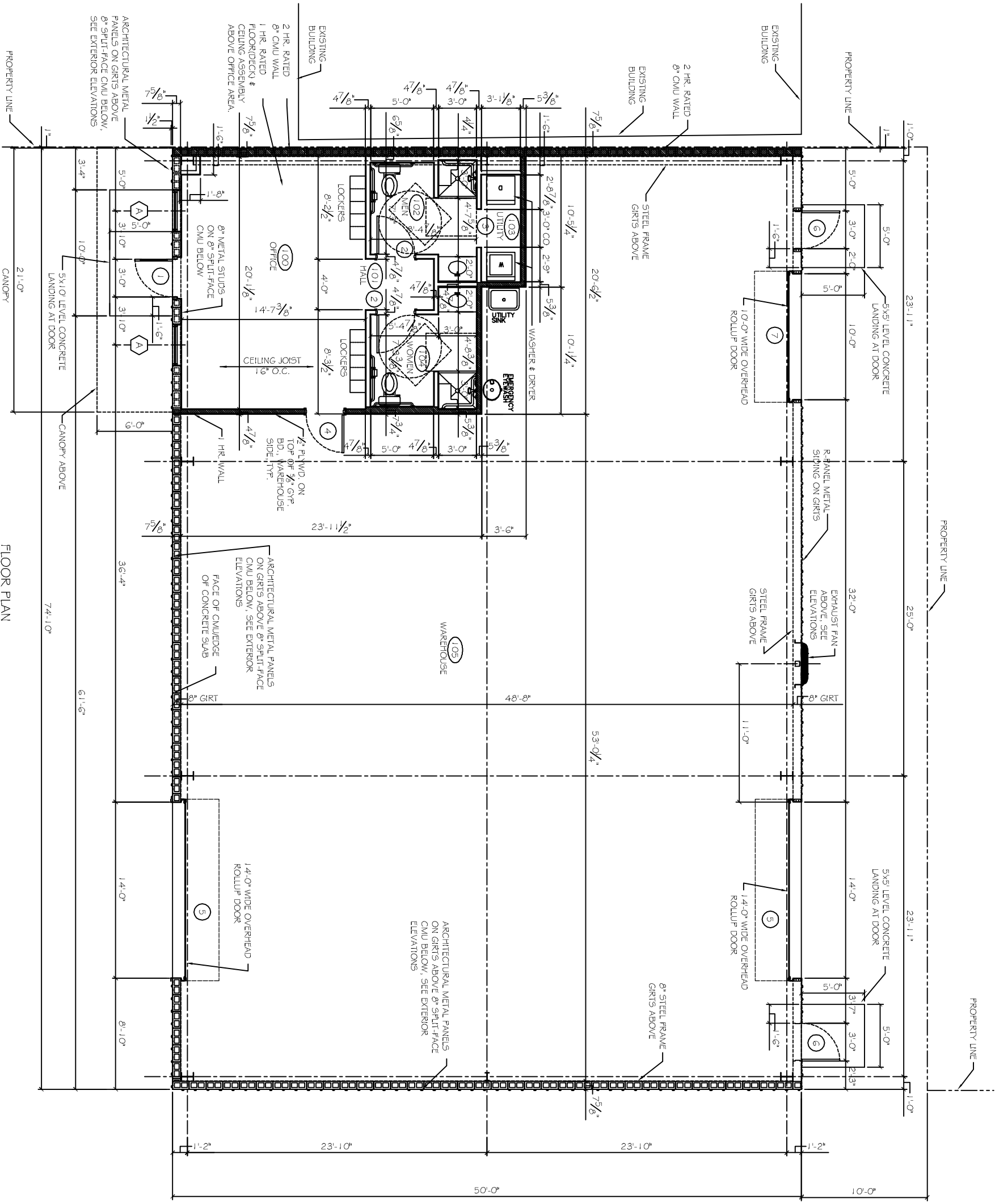


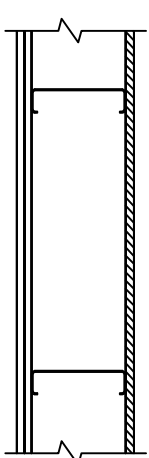
FLOOR PLAN
SCALE: 1/4" = 1'-0"



1 HOUR FIRE 45 TO 49 STC SOUND
THICKNESS: 4-7/8"
APPROX. WEIGHT: 6 PSF
FIRE TEST: SEE WP 1200 (FM WP-45, 6-19-68); OSU T-1770, 8-6-11; ULC 791484, 791500, 791497, 8-12-81; ULC DESIGN W415)
SOUND TEST: NRCC 816-NV, 2-3-81

GA FILE NO. WP 1072
ONE LAYER 5/8" TYPE X GYPSUM WALLBOARD OR GYPSUM VENEER BASE APPLIED PARALLEL OR AT RIGHT ANGLES TO EACH SIDE OF 3-5/8" STEEL STUDS 24" O.C. WITH 1" TYPE S DRYWALL SCREWS 8" O.C. AT VERTICAL JOINTS AND 12" O.C. AT FLOOR AND CEILING RUNNERS AND INTERMEDIATE STUDS.
JOINTS STAGGERED 24" ON EACH SIDE AND ON OPPOSITE SIDES.
SOUND TESTED WITH 3-1/2" GLASS FIBER FRICTION FIT IN STUD SPACE. (NON-LOAD BEARING)

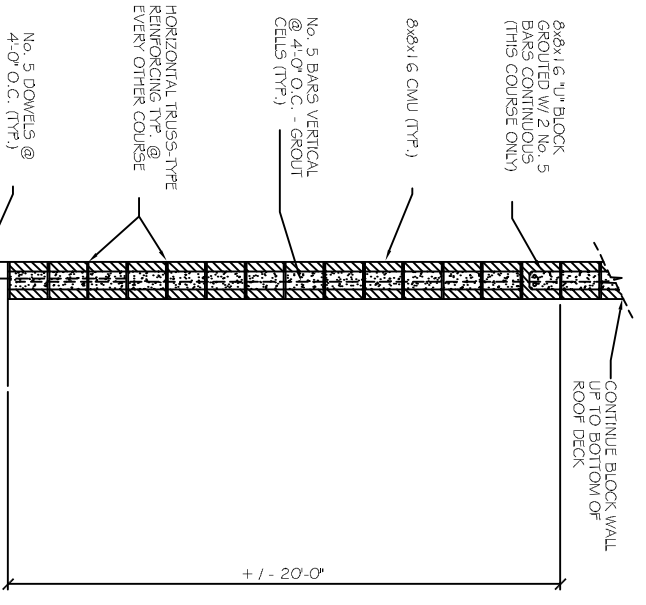
1 HR WALL SEPARATION DETAIL
NTS



GA FILE NO. FC 4502

BASE LAYER 1/2" (12.7 MM) FIRE-SHIELD C GYPSUM BOARD APPLIED AT RIGHT ANGLES TO CHANNEL SHAFED, MINIMUM 7" DEEP, 1/8" GAGE STEEL JOISTS 24" O.C. WITH 1" TYPE S-12 DRYWALL SCREWS 8" O.C. AT ENDS AND 12" O.C. AT INTERMEDIATE JOISTS. FACE LAYER 1/2" FIRE-SHIELD C GYPSUM BOARD APPLIED AT RIGHT ANGLES TO JOISTS WITH 1-1/2" TYPE S SCREWS AT END JOISTS BETWEEN JOISTS AND 1-5/8" TYPE S-12 DRYWALL SCREWS 12" O.C. AT INTERMEDIATE JOISTS. JOINTS OFFSET FROM BASE LAYER JOINTS. STEEL JOISTS SUPPORTING 5/8" T & G PLYWOOD FLOOR APPLIED AT RIGHT ANGLES TO JOISTS WITH 1-1/5" #6 #5-1/2 SCREWS AT 6" O.C. AT FLOOR PERIMETER AND END JOISTS AND 10" O.C. AT INTERMEDIATE JOISTS.

1 HR FLOOR/CEILING DETAIL
NTS



2 HR RATED CMU WALL UL# U905
NTS

BULK SYSTEM'S NEW OFFICE/WAREHOUSE BUILDING

1226 REVELAUX AVENUE
SUDELL, LOUISIANA 70455

JOB No:	2173	DATE:	04-22-2013
DRAWN BY:	JTL	CHECKED BY:	



DAMMON ENGINEERING, INC.
Architects & Engineers

CHIEF ENGINEER: EMMETT DAMMON, P.E.
CHIEF ARCHITECT: KEVIN KINCHEN
554 OLD SPANISH TRAIL
SUDELL, LA 70458
dammoneng@dammoneng.com
dammoneng@tellsoc.la.net
PHONE: 905-649-5832
FAX: 905-641-5950

#	DESCRIPTION	DATE

FLOOR PLAN

SHEET No: 9 OF 20

A1