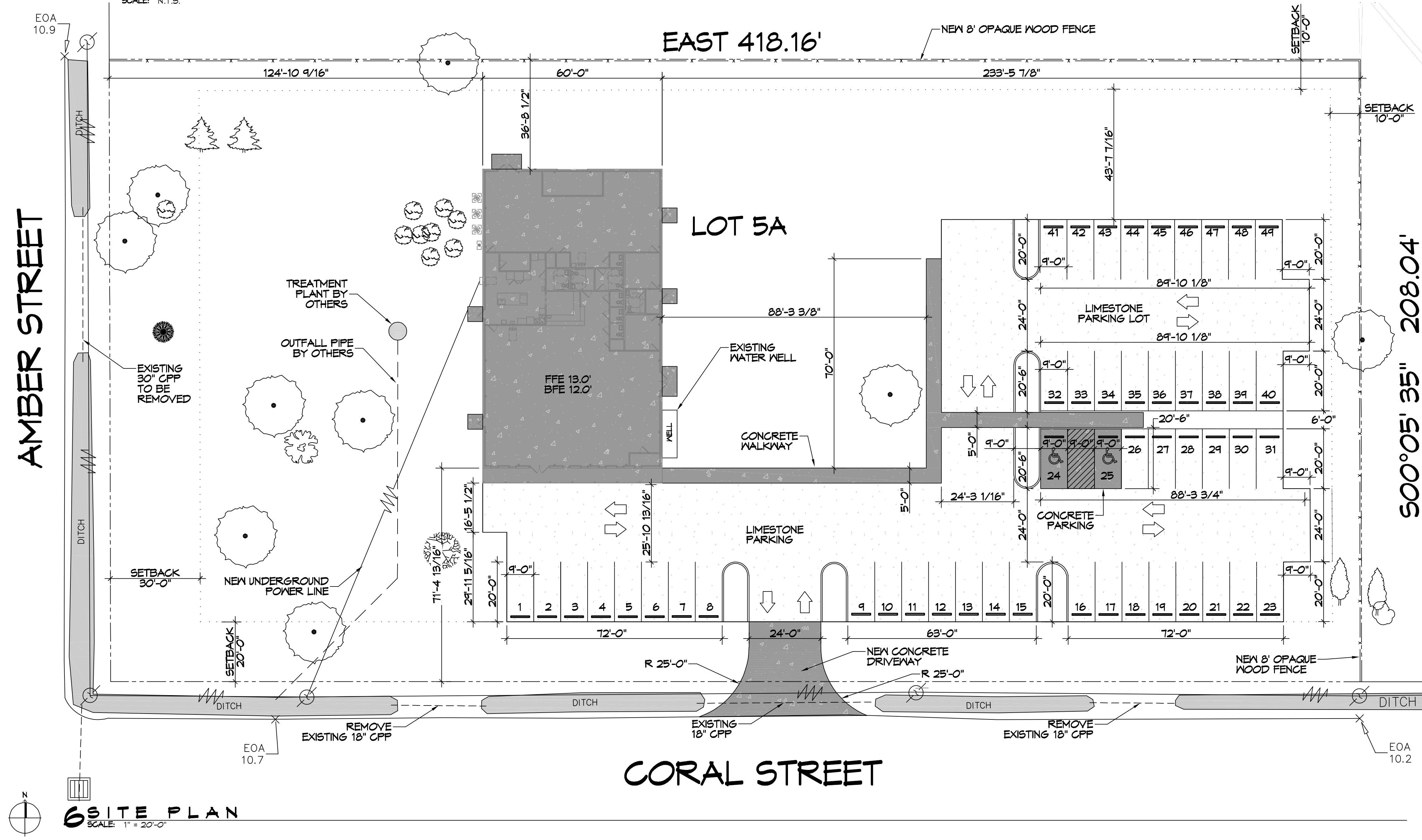


**OPAQUE FENCE**  
SCALE: N.T.S.



**6 SITE PLAN**  
SCALE: 1" = 20'-0"

<b>PARKING</b>			
1 SPACE PER 4 OCCUPANTS AT MAXIMUM CAPACITY PLUS 2 ADDITIONAL SPACES FOR EVERY 3 EMPLOYEES.			
REQUIRED SPACES: 32 PROVIDED SPACES: 44			
<b>PLANING</b>			
LOT ZONED	5A HC-1		
<b>FLOOD ZONE</b>			
ZONE "A1"			
<b>BUILDING ELEVATION</b>			
BASE FLOOD ELEVATION = 12.0' FINISHED FLOOR ELEVATION = 13.0'			
<b>SITE LIGHTING</b>			
EXTERIOR LIGHTING SHALL BE SHADED OR INWARDLY DIRECTED IN SUCH A MANNER SO THAT NO DIRECT LIGHTING OR GLARE BE CAST BEYOND THE PROPERTY LINE. THE INTENSITY OF SUCH LIGHTING SHALL NOT EXCEED ONE FOOT CANDLE AS MEASURED AT THE ADJUTING PROPERTY LINE.			
<b>LEGEND</b>			
	POWER POLE		POWER LINE
	FENCE		PROPERTY SETBACK
	PROPERTY LINE		CULVERT
	PARKING BUMPER		LIMESTONE PARKING LOT

**DAMMON ENGINEERING, INC.**  
LOUISIANA & MISSISSIPPI

Chief Engineer: Brian Mistich, PE  
554 Old Spanish Trail  
Slidell, LA 70468  
www.dammonengineering.com  
info@dammonengineering.com  
PH: 985.449.9832

DATE	04-26-22
REVISIONS	
#	DESCRIPTION
1	REVISED PER ENGINEERING



**NEW BUILDING DREW MANUAL**

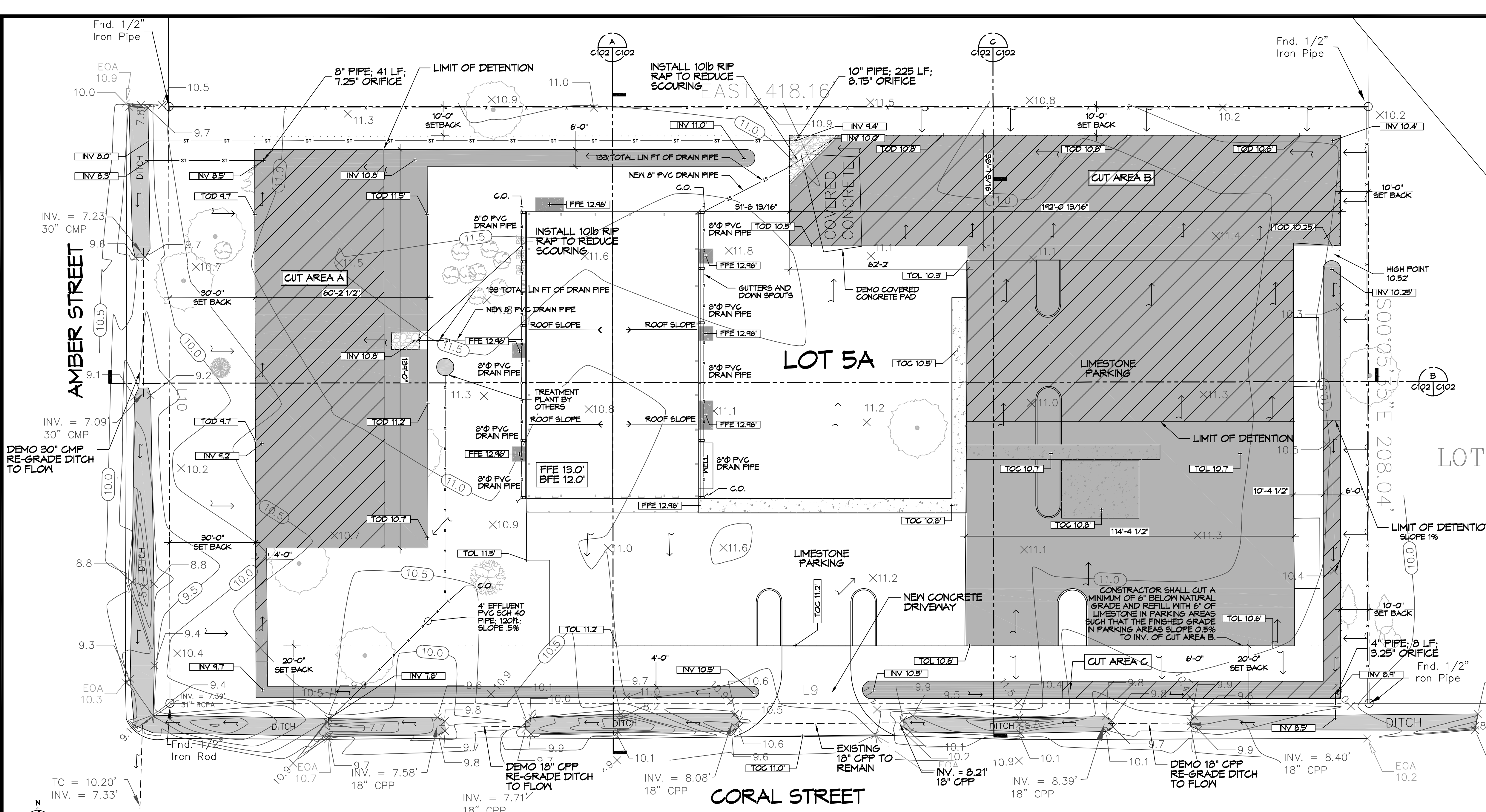
40281 CORAL STREET  
SLIDELL, LA 70461

JOB No: DATE: 12-14-2021  
DRAWN BY: JMS  
CHECKED BY: GCD

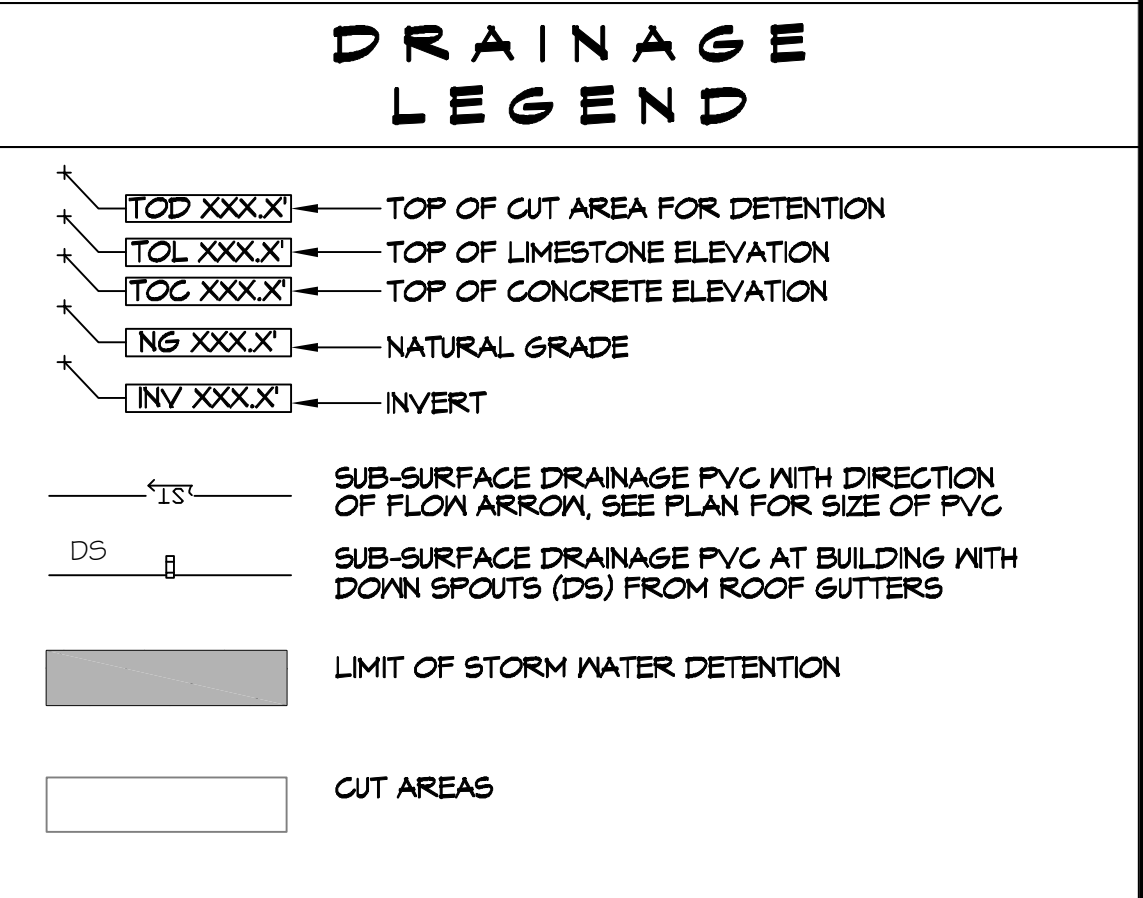
SHEET TITLE:  
SITE PLAN

DRAWING NUMBER:  
**C101**

SHEET No: 3 of 12

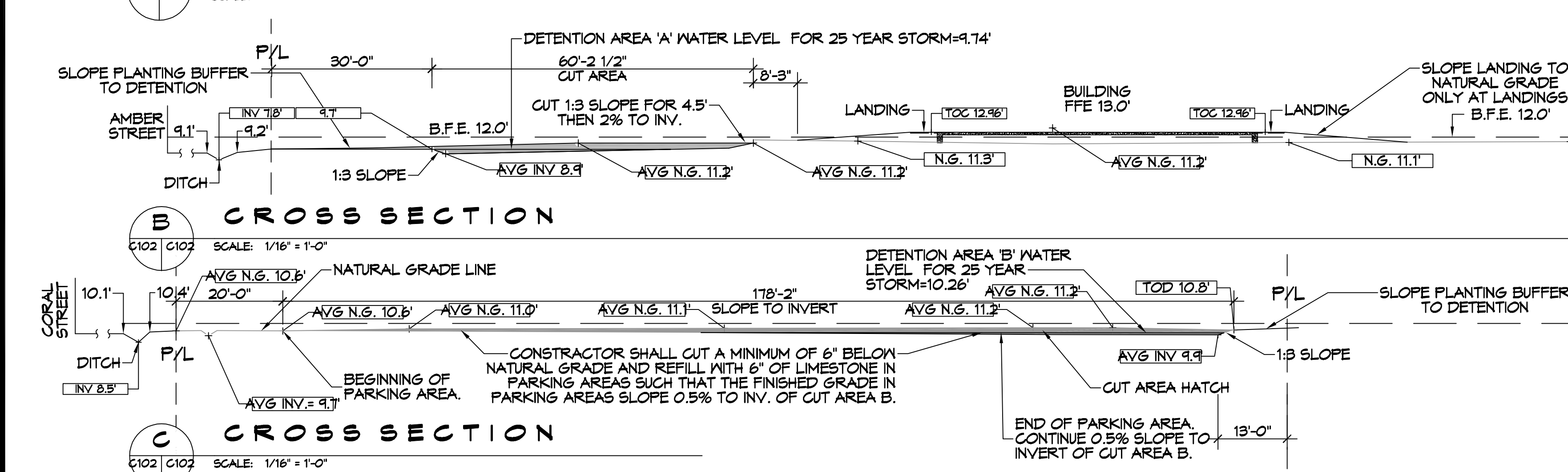
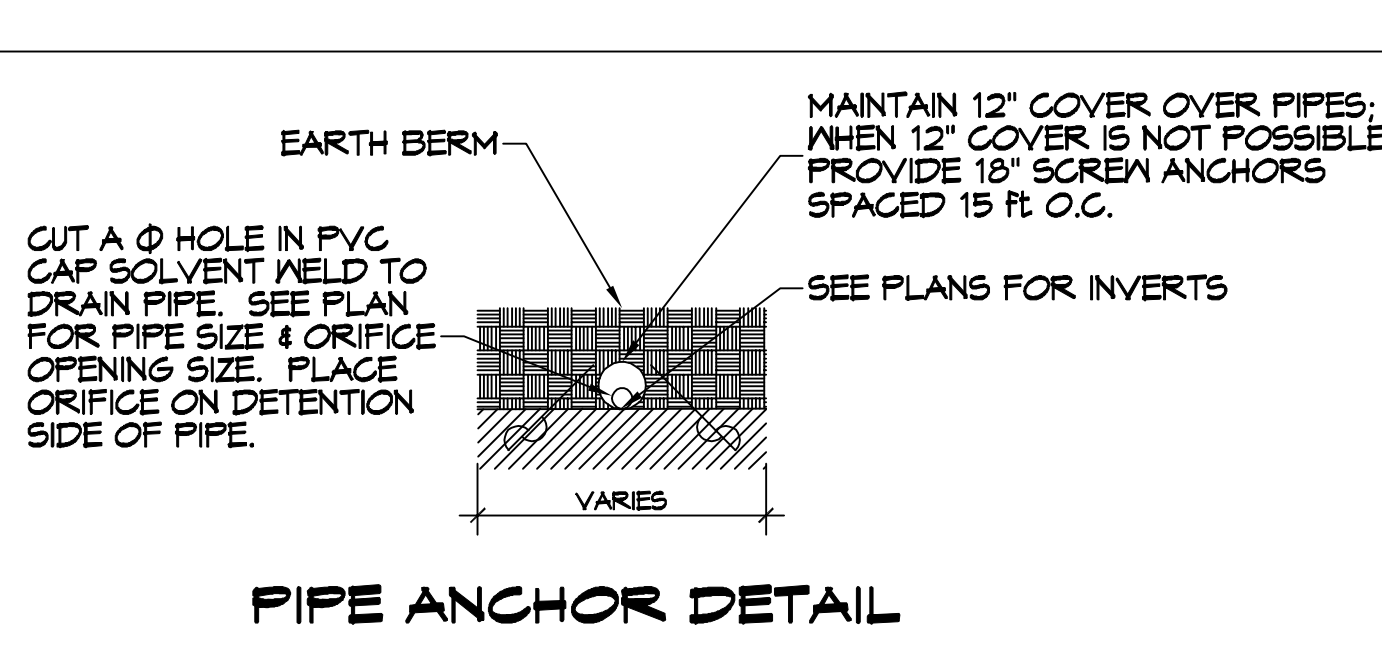
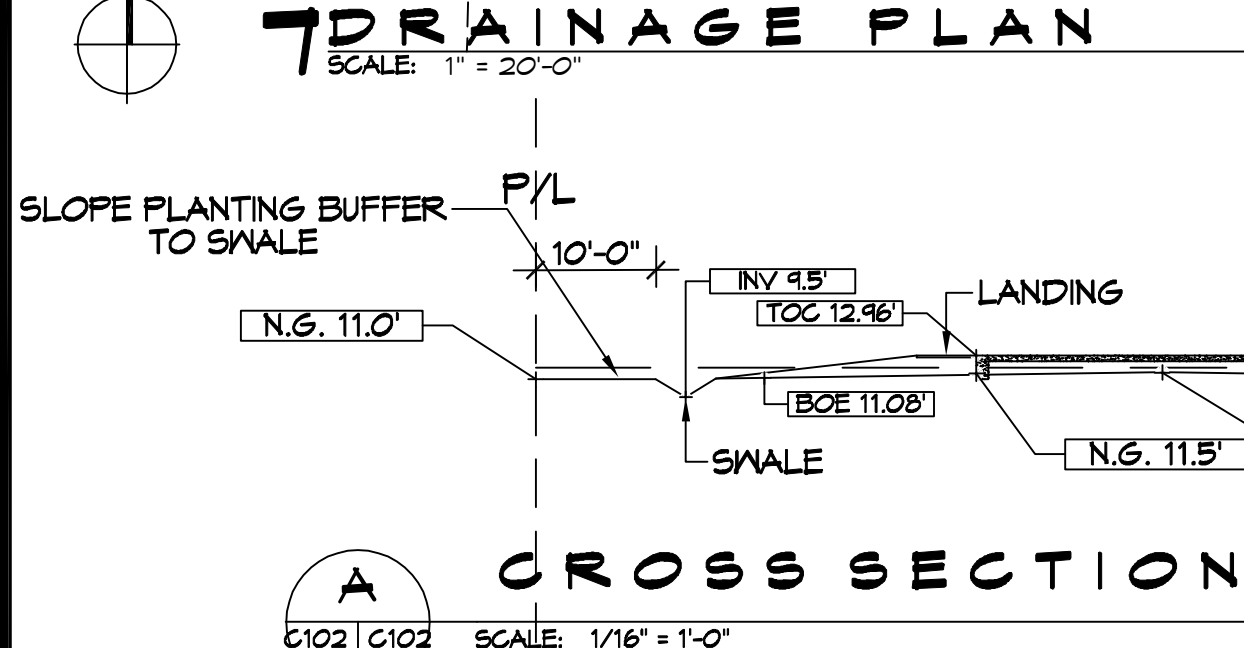


- ### DRAINAGE NOTES
- DRAIN PIPE AND FITTINGS WITHIN PROPERTY LINE SHALL BE POLYVINYL CHLORIDE PLASTIC PIPE, MEETING CLASS 100 C-400 PVC.
  - ELEVATIONS SHOWN ARE MSL.
  - FIELD VERIFY ALL ELEVATIONS AND AND DRAINAGE SYSTEM PLACEMENT PRIOR TO START OF WORK.
  - PROVIDE VERTICAL ELBOW AT DOWNSPOUTS FOR CONNECTION TO SUBSURFACE DRAINAGE WHERE INDICATED. ELBOW ID SHALL BE SIZED SUCH THAT THE DOWNSPOUT CAN BE INSERTED INTO THE PIPE OPENING WITHOUT DEFORMATION TO THE DOWNSPOUT.



### CUT/FILL CALCULATIONS

- BFE = 12.0'. FILL CALCULATIONS WERE BASED ON EXISTING ELEVATIONS UP TO BFE + 18.0'.
  - SECTION A:
    - (21.4 s.f. x 10ft Rear Landing) 214 cu ft
    - (4.8 s.f. x 60 Ft Front Porch) 588 cu ft
    - (30.3 x 60 Ft Front Porch Slope to Parking) 1,818 cu ft
    - = 2,620 cu ft**
  - SECTION B:
    - (108.6 s.f. x 100 Ft Building) 10,860 cu ft
    - (30.0 s.f. x 35 Ft Landing) 1,050 cu ft
    - = 11,910 cu ft**
  - PARKING LANDSCAPING AREA:
    - 162 s.f. x 5 Ft x 6 Planting areas = 486 cu ft
  - Additional fill for sidewalk to ADA parking. 5.18 s.f. x 57 If = 295 cu ft
  - Additional fill for 3 sides of building extending out 10 Ft with 5% slope. 2.78 s.f. x 260 If = 725 cu ft
  - Additional volume for parking bumpers. 2.9 s.f. x 5 Ft x 4 Ft = 58 cu ft
  - VOLUME TO CUT DUE TO FILL = 16,147 cu ft.**
- CUT CALCS
  - NOTE: Swale cuts were not included in this calculation as this will be used to add to the planting areas to add slope into the swales.
  - A. CUT CALCS AREA A
    - 80.9 s.f. x 134 linear ft ( 11,245 cu ft)
    - Volume above 25 yr detention water surface elevation and below BFE = 8,618 cu ft
  - B. CUT CALCS AREA B
    - (93.4 s.f. x 52 linear ft) 1,737 cu ft
    - (143.1 s.f. x 114 linear ft) 16,313 cu ft
    - Volume above 25 yr detention water surface elevation and below BFE = 14,676 cu ft
    - Total cut volume above 25 yr detention elevations and below BFE = 29,246 cu ft



### STORMWATER DETENTION CALCULATIONS

A. DETENTION CALCS AREA A	18.9 s.f. x 134 linear ft	= 2,627 cu ft	
B. DETENTION CALCS AREA B	16.4 s.f. x 52 linear ft (853 cu ft)	22.1 s.f. x 114 linear ft (2,519 cu ft)	= 3,372 cu ft
C. DETENTION CALCS AREA C	4.5 s.f. x 78 linear ft	= 351 cu ft	
<b>TOTAL DETENTION VOLUME</b>		<b>= 6,350 cu ft</b>	

### GRADING NOTE

NOTE: ALL EXCESS CUT SOILS SHALL BE HAULED OFFSITE.

# DAMMON ENGINEERING, INC.

LOUISIANA & MISSISSIPPI

Chief Engineer: Brian Mistch, PE  
www.dammonengineering.com  
554 Old Spanish Trail  
Sibley, LA 70468  
PH: 985.449.9832

DATE: 04-26-22	REVISIONS
# DESCRIPTION	1 REVISED PER ENGINEERING

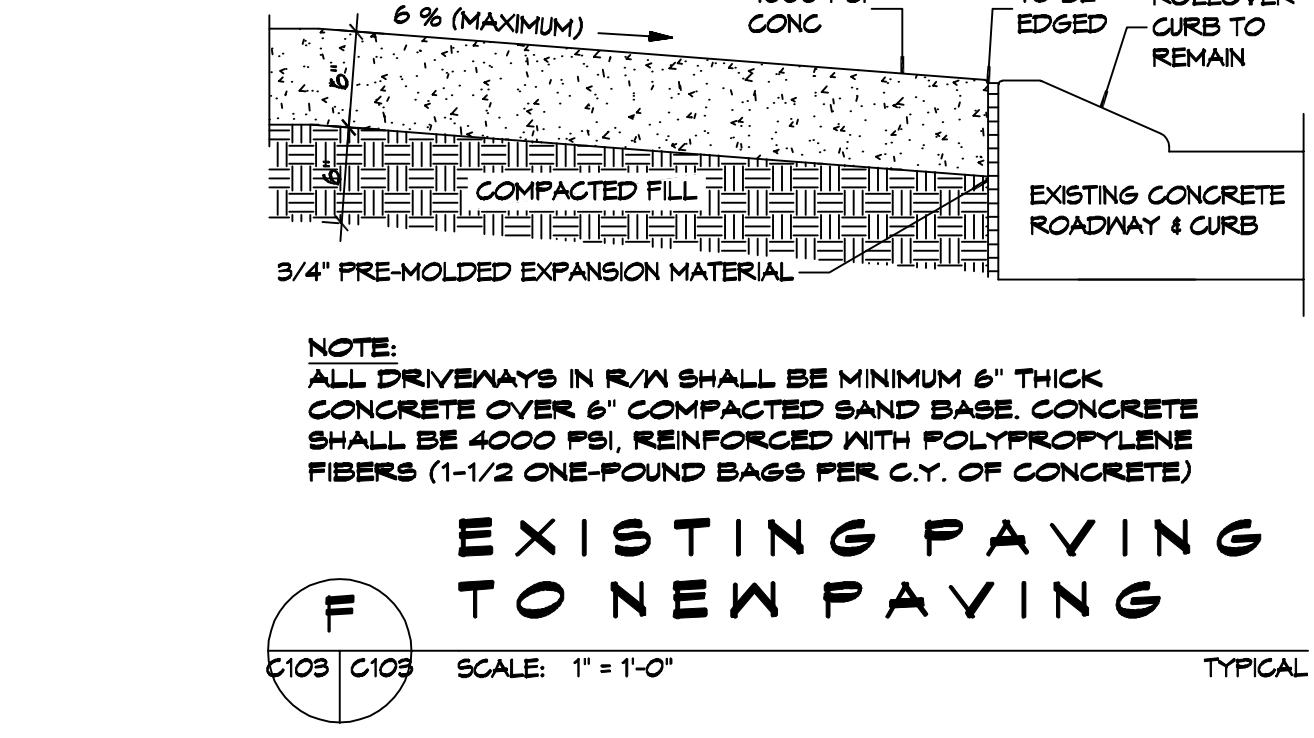
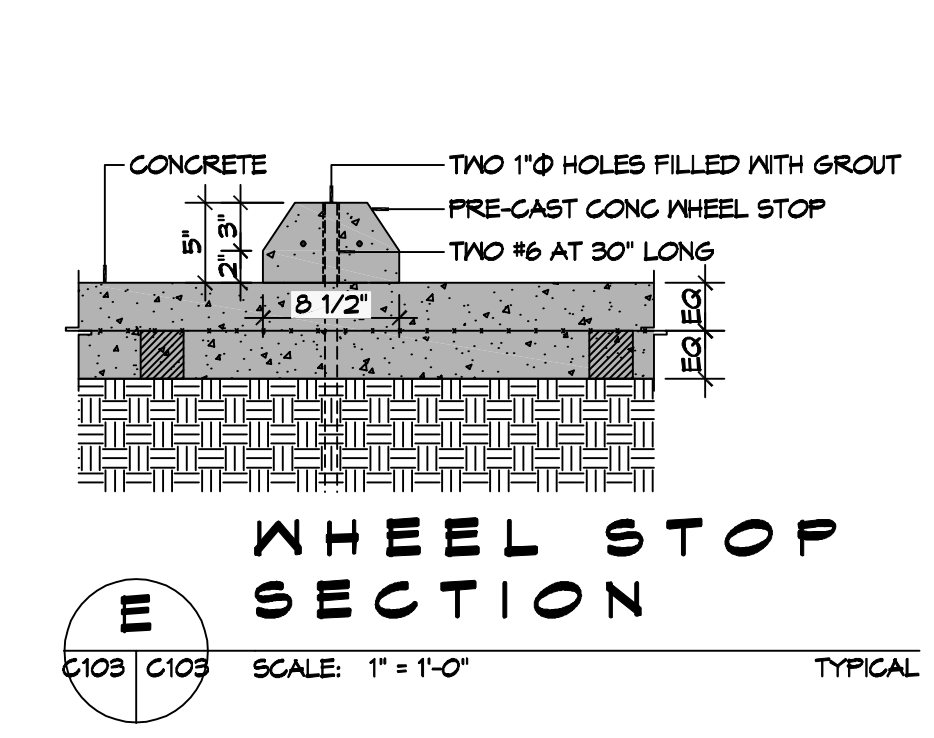
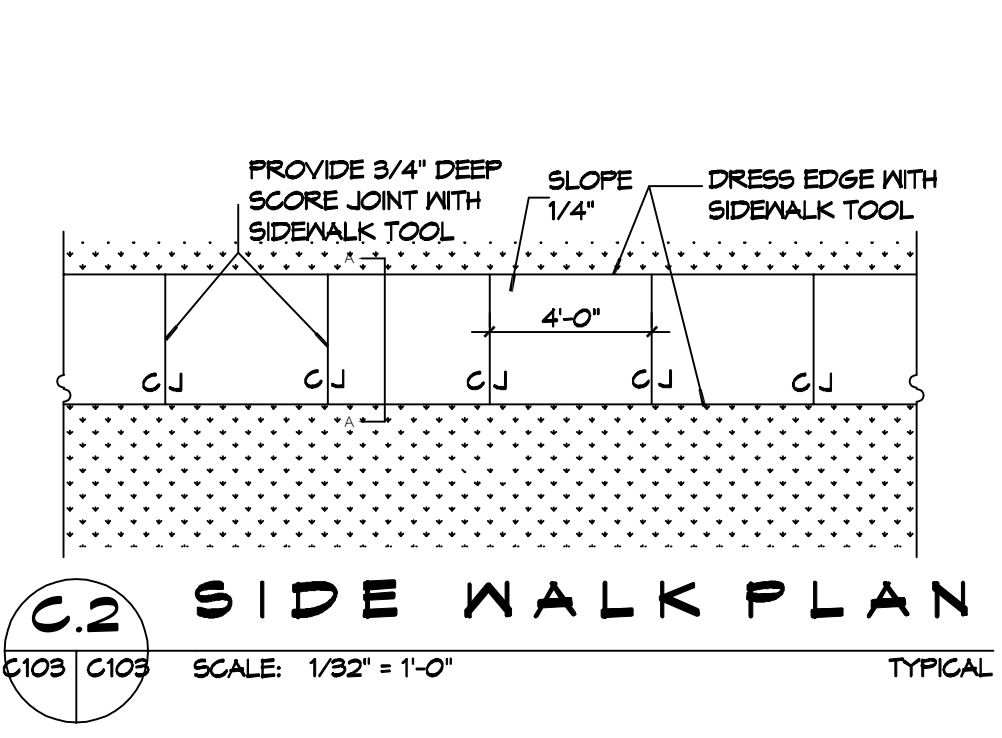
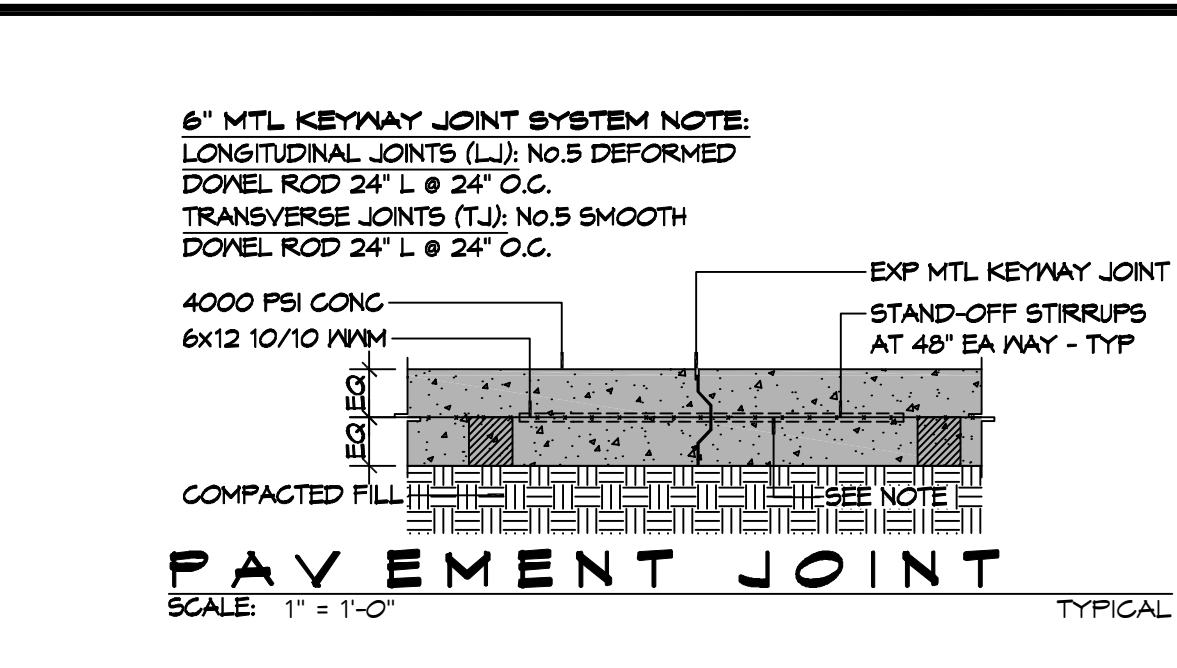
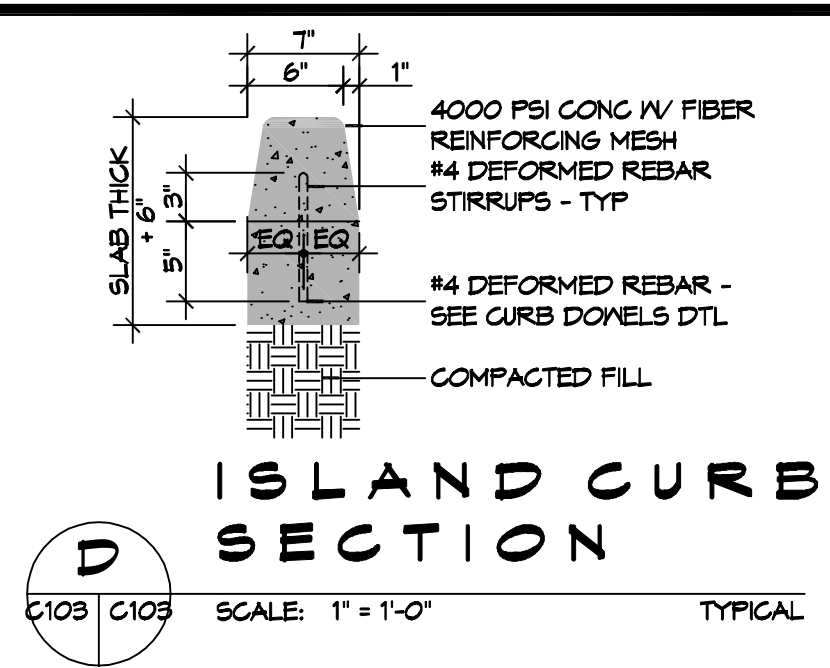
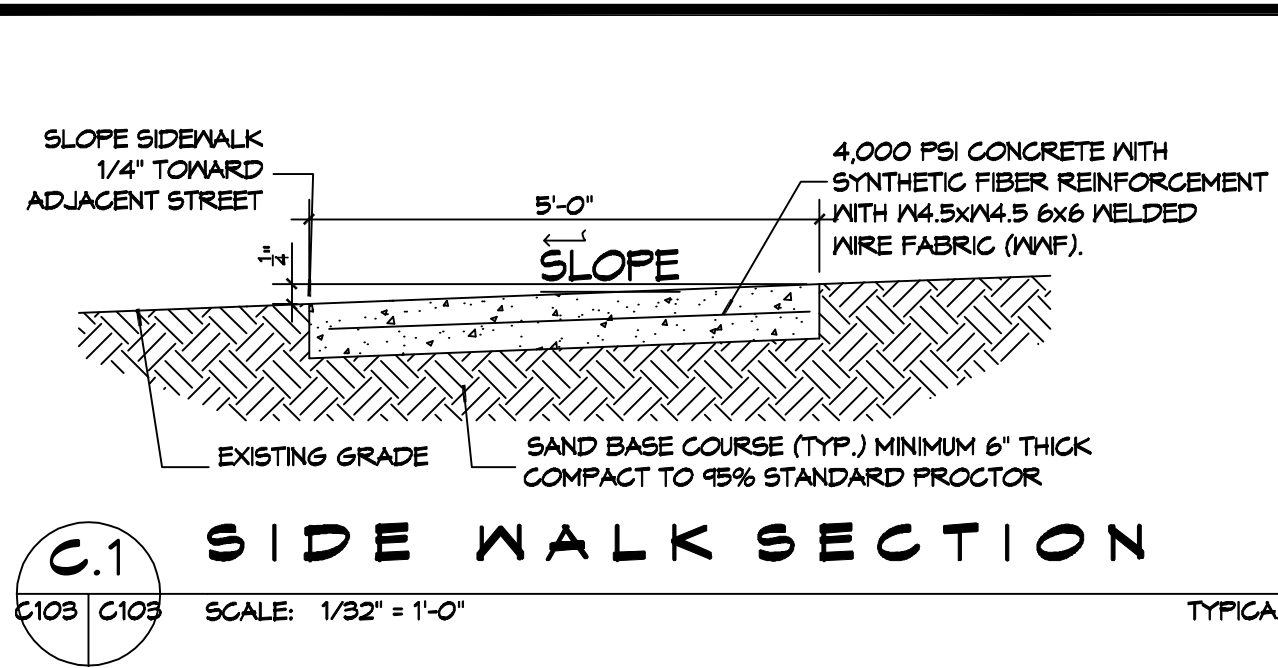
NEW BUILDING

DRAWING NUMBER:

## C102

SHEET TITLE: SITE DRAINAGE PLAN

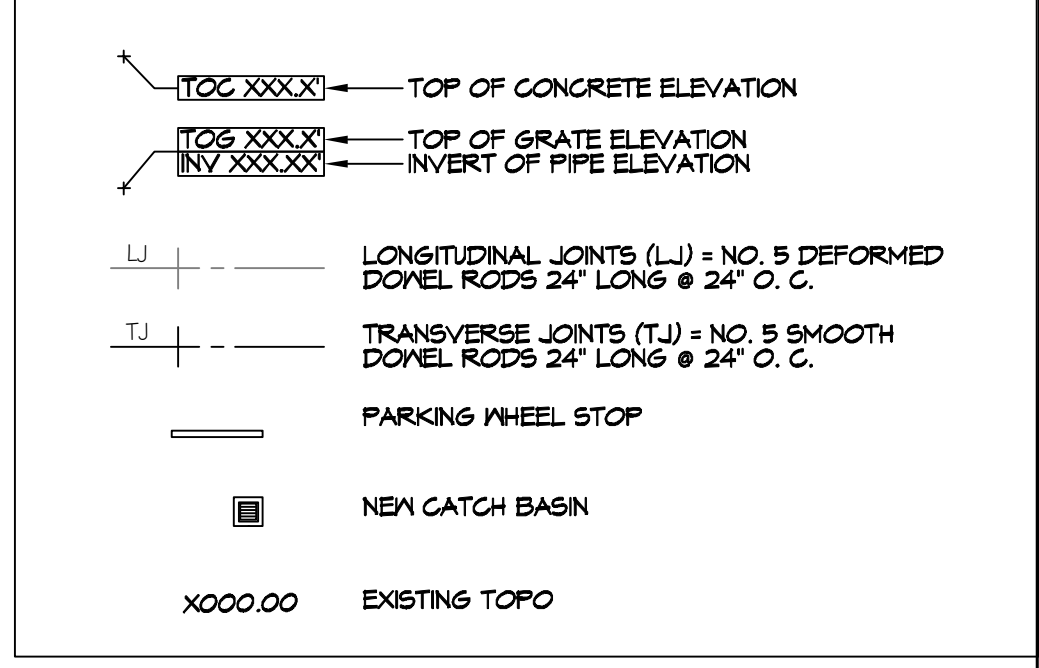
SHEET No: 4 of 12



**GENERAL PAVING NOTES**

- ALL NEW CONCRETE SHALL HAVE A MINIMUM COMPRESSIVE STRENGTH OF 4,000 PSI AT 28 DAYS AND A MINIMUM THICKNESS OF 6". CONCRETE MIX SHALL BE IN ACCORDANCE WITH THE LATEST REVISION OF ASTM C-150 TYPE 1.
- CONCRETE PAVING THICKNESS SHALL VARY AS FOLLOWS:
  - APRONS & LOADING AREAS = 8" THICKNESS (INDICATED WITH CROSS HATCH WHERE OCCURS)
  - DRIVE LANES & PARKING AREAS = 6" THICKNESS (STANDARD UNO)
- ALL REINFORCING STEEL SHALL MEET ASTM-A615 (GRADE 60).
- ALL REINFORCING STEEL SHALL BE SECURELY SUPPORTED TO PREVENT BOTH VERTICAL AND HORIZONTAL MOVEMENT DURING CONCRETE PLACEMENT. ALL CONTROL AND EXPANSION JOINTS SHALL BE LOCATED AND INSTALLED AS SHOWN ON THE PAVING PLAN AND IN ACCORDANCE WITH THE MANUFACTURER'S RECOMMENDATIONS.
- ALL SUB GRADE FILL SHALL BE SELECT GRANULAR MATERIAL COMPACTED TO 95% STANDARD PROCTOR DENSITY IN A MAXIMUM OF 6" LIFTS.
- ANY WORK WITHIN THE ROADWAY OR ADJACENT TO THE ROADWAY CAUSING AN INTERFERENCE TO VEHICULAR TRAFFIC MUST CONFORM TO THE REQUIREMENTS SET FORTH BY THE UNIFORM MANUAL OF TRAFFIC CONTROL DEVICES OF THE STATE OF LOUISIANA. THE CONTRACTOR MUST FURNISH ALL NECESSARY TRAFFIC SIGNS AND/OR BARRICADES AND MAINTAIN THEM DURING CONSTRUCTION ACTIVITY.

**PAVING LEGEND**



**DAMMON ENGINEERING, INC.**  
LOUISIANA & MISSISSIPPI  
Chief Engineer: Brian Mistich, PE  
594 Old Spanish Trail  
Slidell, LA 70468  
www.dammonengineering.com  
info@dammonengineering.com  
PH: 985.649.5832

#	DESCRIPTION	DATE
1	REVISED PER ENGINEERING	04-26-22



**NEW BUILDING**  
**DREW MANUAL**  
40081 CORAL STREET  
SLIDELL, LA 70461  
JOB No: DATE: 12-14-2021  
DRAWN BY: BAW  
CHECKED BY: BAW

SHEET TITLE:  
**PAVING PLAN**

DRAWING NUMBER:  
**C103**

SHEET No: 5 of 12

