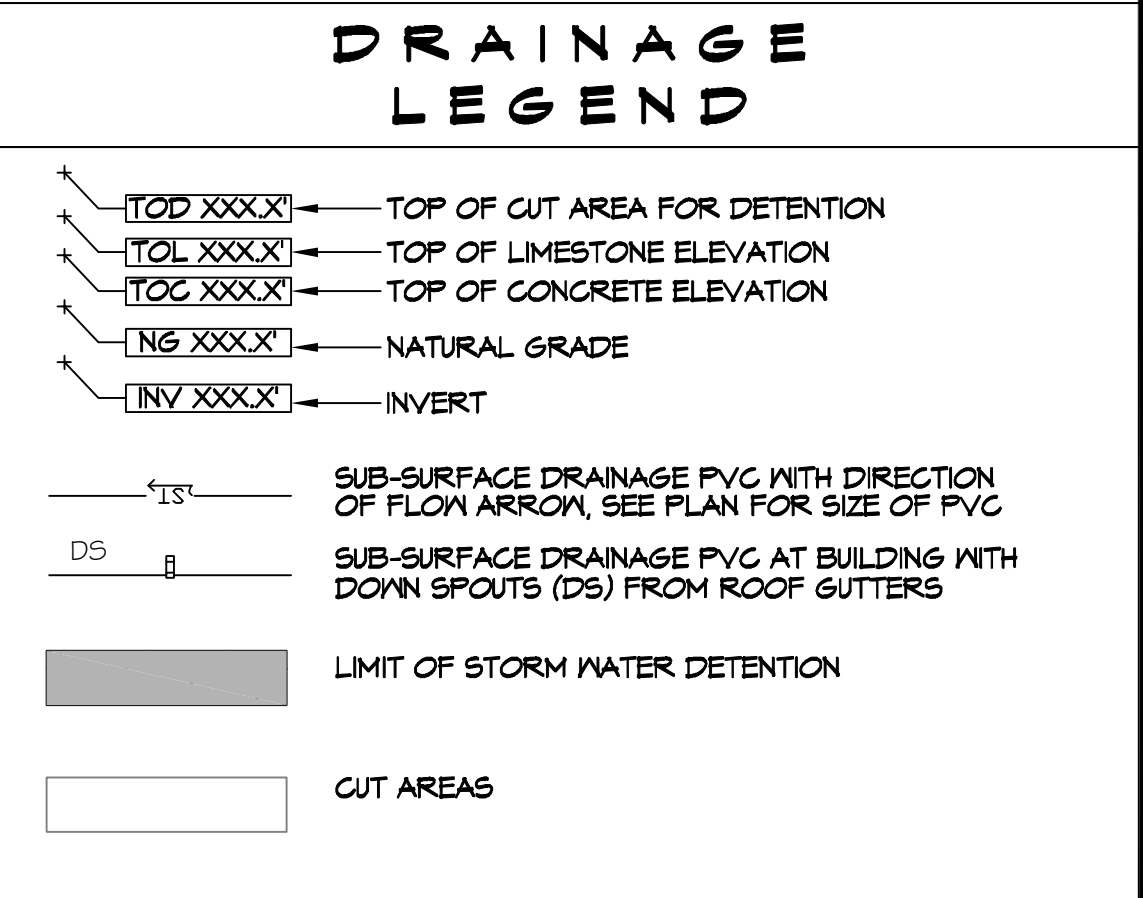


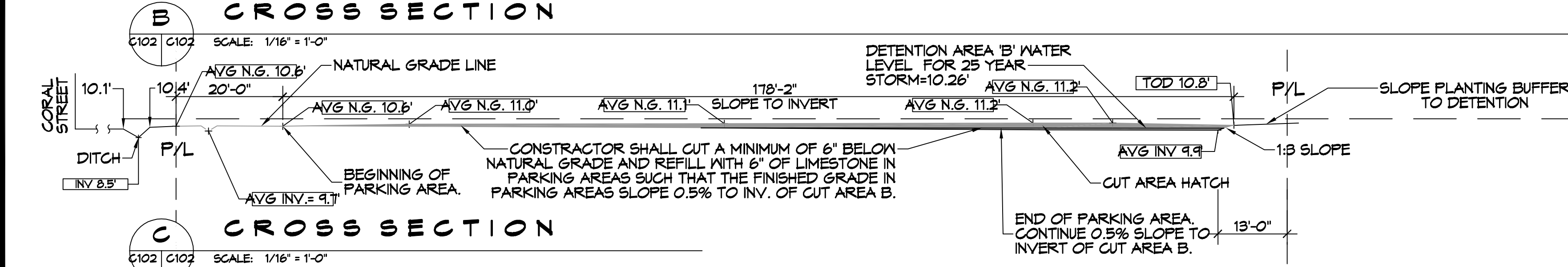
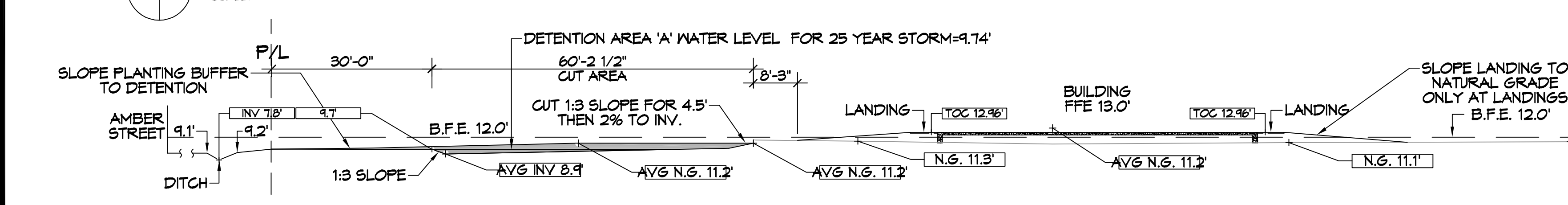
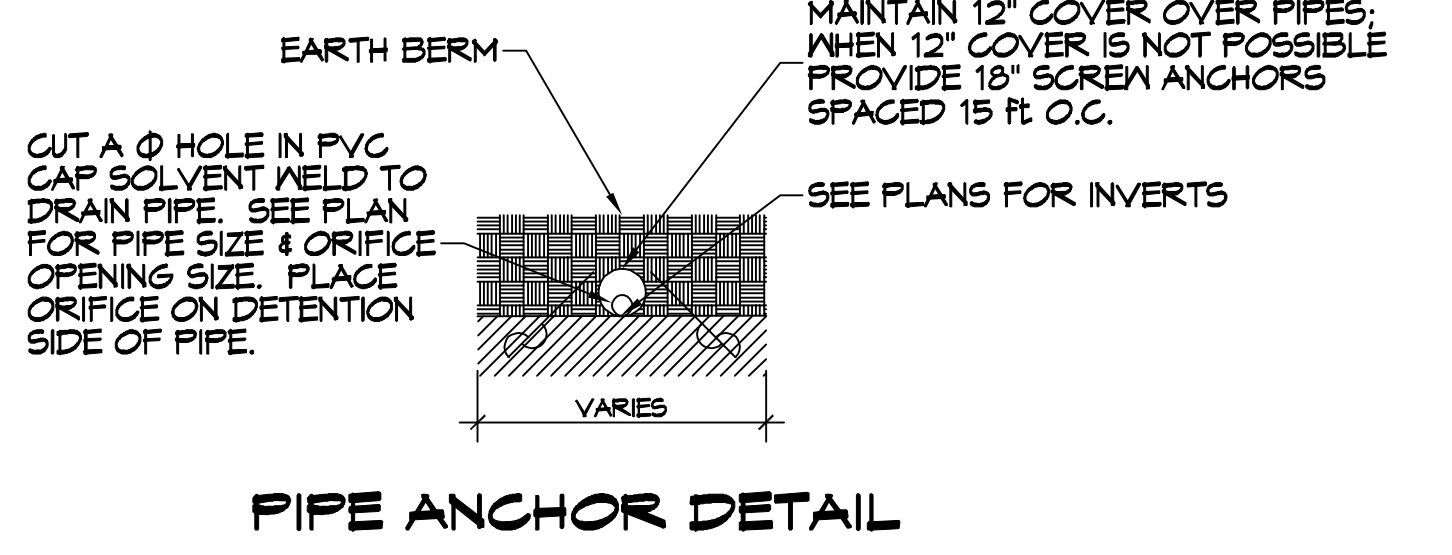
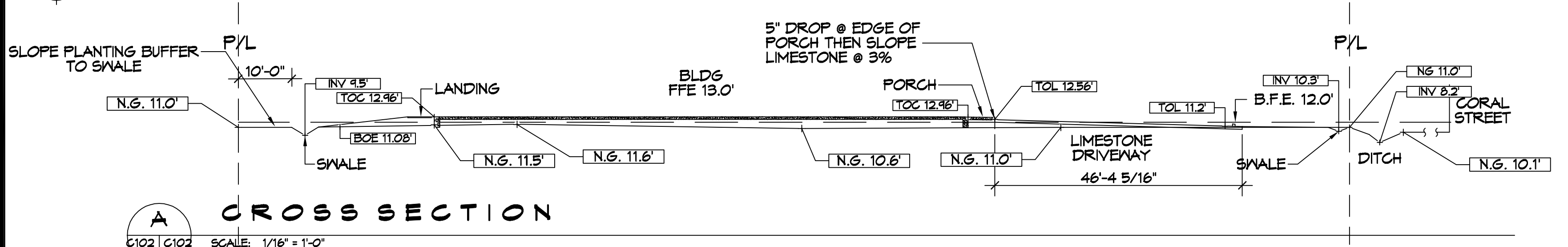
- ### DRAINAGE NOTES
- DRAIN PIPE AND FITTINGS WITHIN PROPERTY LINE SHALL BE POLYVINYL CHLORIDE PLASTIC PIPE, MEETING CLASS 100 C-400 PVC.
  - ELEVATIONS SHOWN ARE MSL.
  - FIELD VERIFY ALL ELEVATIONS AND AND DRAINAGE SYSTEM PLACEMENT PRIOR TO START OF WORK.
  - PROVIDE VERTICAL ELBOW AT DOWNSPOUTS FOR CONNECTION TO SUBSURFACE DRAINAGE WHERE INDICATED. ELBOW ID SHALL BE SIZED SUCH THAT THE DOWNSPOUT CAN BE INSERTED INTO THE PIPE OPENING WITHOUT DEFORMATION TO THE DOWNSPOUT.



### CUT/FILL CALCULATIONS

- BFE = 12.0'. FILL CALCULATIONS WERE BASED ON EXISTING ELEVATIONS UP TO BFE +1' = 13.0'.
  - SECTION A:
    - (21.4 s.f. x 10ft Rear Landing) 214 cu ft
    - (4.8 s.f. x 60 Ft Front Porch) 588 cu ft
    - (30.3 x 60 Ft Front Porch Slope to Parking) 1,818 cu ft
    - = 2,625 cu ft**
  - SECTION B:
    - (108.6 s.f. x 100 Ft Building) 10,860 cu ft
    - (30.0 s.f. x 35 Ft Landing) 1,085 cu ft
    - = 11,945 cu ft**
  - PARKING LANDSCAPING AREA:
    - 162 s.f. x 5 Ft x 6 Planting areas = 486 cu ft
  - Additional fill for sidewalk to ADA parking. 5.18 s.f. x 57 If = 295 cu ft
  - Additional fill for 3 sides of building extending out 10 Ft with 5% slope. 2.78 s.f. x 260 If = 725 cu ft
  - Additional volume for parking bumpers. 2.9 s.f. x 5 Ft x 4 Ft = 58 cu ft
  - VOLUME TO CUT DUE TO FILL = 16,141 cu ft.**
- CUT CALCS
  - NOTE: Swale cuts were not included in this calculation as this will be used to add to the planting areas to add slope into the swales.
  - A. CUT CALCS AREA A
    - 80.9 s.f. x 134 linear ft ( 11,245 cu ft)
    - Volume above 25 yr detention water surface elevation and below BFE = 8,618 cu ft
  - B. CUT CALCS AREA B
    - (93.4 s.f. x 52 linear ft) 1,737 cu ft
    - (143.1 s.f. x 114 linear ft) 16,313 cu ft
    - Volume above 25 yr detention water surface elevation and below BFE = 14,618 cu ft
    - Total cut volume above 25 yr detention elevations and below BFE = 29,246 cu ft

**7 DRAINAGE PLAN**  
SCALE: 1" = 20'-0"



### STORMWATER DETENTION CALCULATIONS

A. DETENTION CALCS AREA A	18.9 s.f. x 134 linear ft	= 2,627 cu ft	
B. DETENTION CALCS AREA B	16.4 s.f. x 52 linear ft (853 cu ft)	22.1 s.f. x 114 linear ft (2,519 cu ft)	= 3,372 cu ft
C. DETENTION CALCS AREA C	4.5 s.f. x 78 linear ft	= 351 cu ft	
<b>TOTAL DETENTION VOLUME</b>		<b>= 6,350 cu ft</b>	

### GRADING NOTE

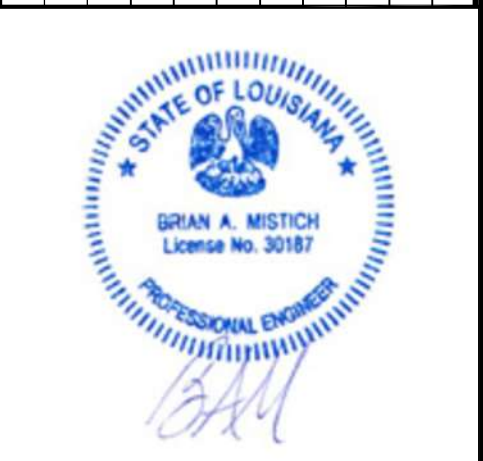
NOTE: ALL EXCESS CUT SOILS SHALL BE HAULED OFFSITE.

# DAMMON ENGINEERING, INC.

LOUISIANA & MISSISSIPPI

Chief Engineer: Brian Mistch, PE  
www.dammonengineering.com  
554 Old Spanish Trail  
Sibley, LA 70468  
PH: 985.449.9832

DATE	DESCRIPTION	REVISIONS
04-26-22 <td>REVISED PER ENGINEERING <td>1 </td></td>	REVISED PER ENGINEERING <td>1 </td>	1



NEW BUILDING  
DRAWING NUMBER:  
SHEET TITLE:  
SITE DRAINAGE PLAN  
SHEET No: 4 of 12