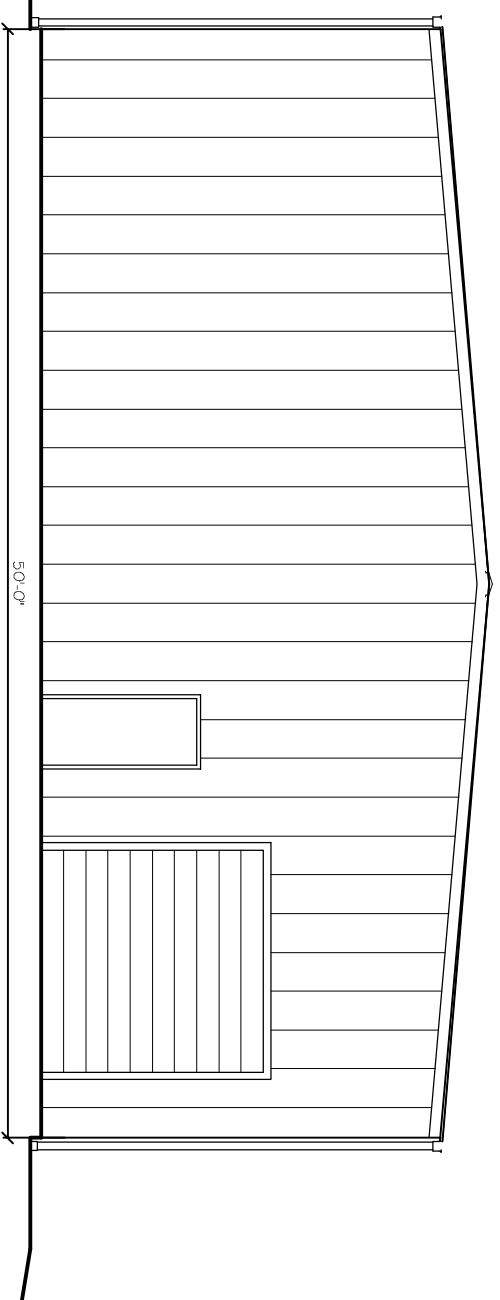
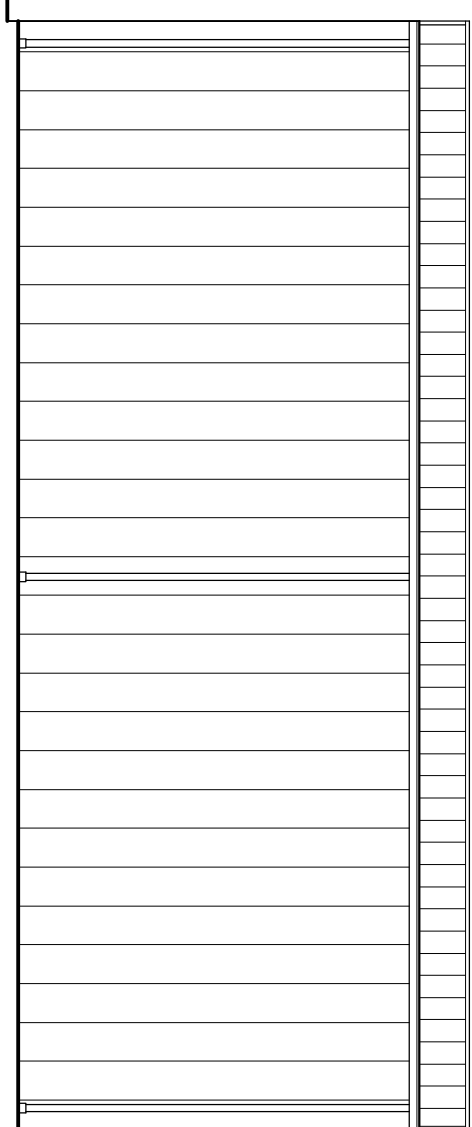


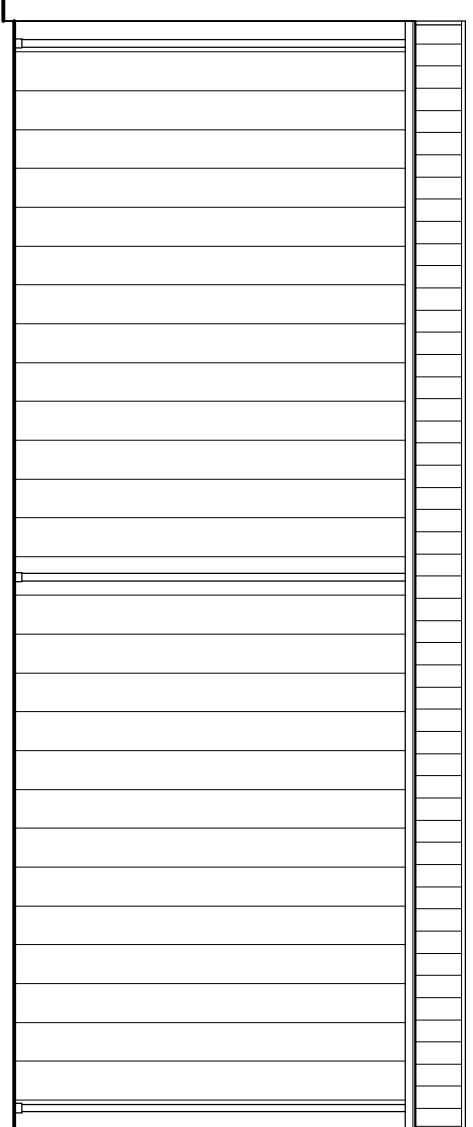
FRONT ELEVATION
SCALE: 1/4" = 1'



REAR ELEVATION
SCALE: 1/4" = 1'



SIDE ELEVATION
SCALE: 1/4" = 1'



SIDE ELEVATION
SCALE: 1/4" = 1'

REVISIONS	
#	DESCRIPTION

INDUSTRIAL & MARINE STARTER
LAMB STREET
NEW ORLEANS, LOUISIANA

JOB No: DATE: 07-29-2013

DRAWN BY: CKD CHECKED BY: CKD

This plan, drawing and specification, and any and all other documents prepared by or on behalf of the firm are the property of Dammon Engineering, Inc. and shall remain the confidential property of the firm. No part of this plan, drawing or specification shall be reproduced, stored in a retrieval system, or transmitted in any form or by any means, electronic, mechanical, photocopying, recording, or by any information storage and retrieval system, without the prior written consent of Dammon Engineering, Inc. All rights reserved. Dammon Engineering, Inc. is not responsible for any errors or omissions in this plan, drawing or specification, or for any consequences arising therefrom.



DAMMON
ENGINEERING, INC.
Architects & Engineers

CHIEF ENGINEER: ENNETT DAMMON, P.E.
CHIEF ARCHITECT: KEVIN KINCHEN
554 OLD SPANISH TRAIL
SUDELL, LA 70458

dammoneng@att.net
dammoneng@bellsouth.net
PHONE: 905-649-5832
FAX: 905-641-5950

BUILDING ELEVATIONS

SHEET No: 0 OF 0

A2