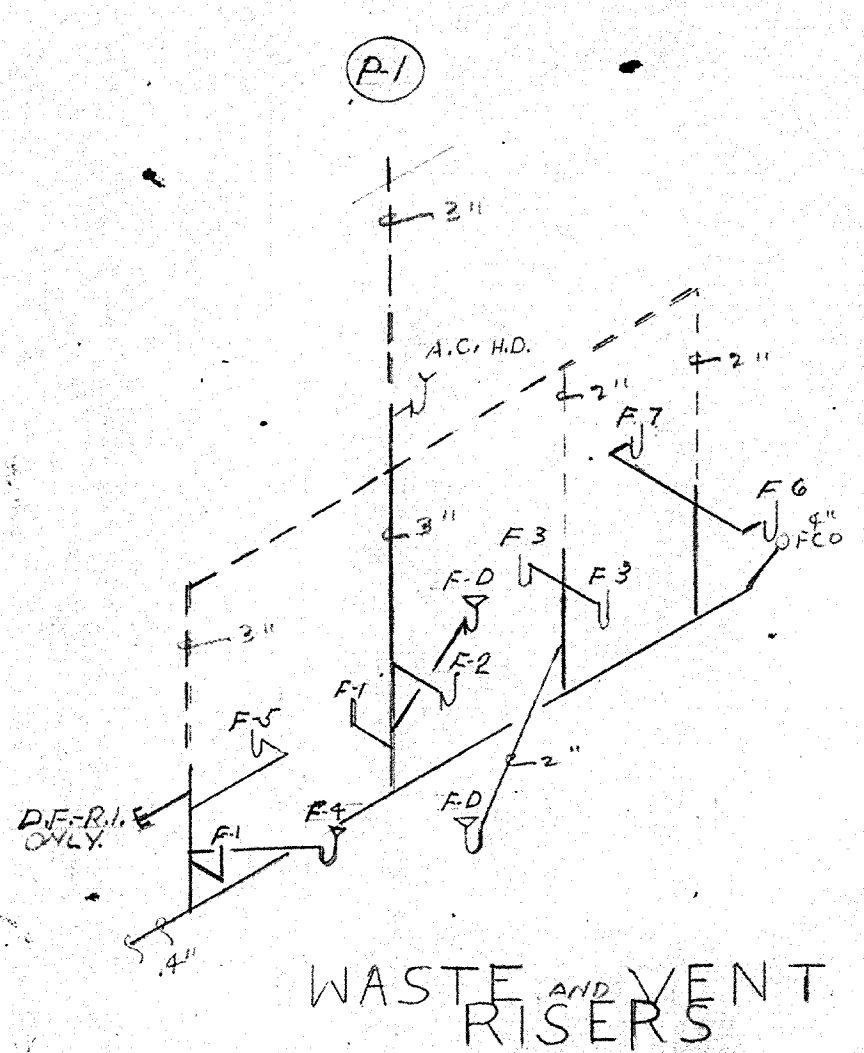
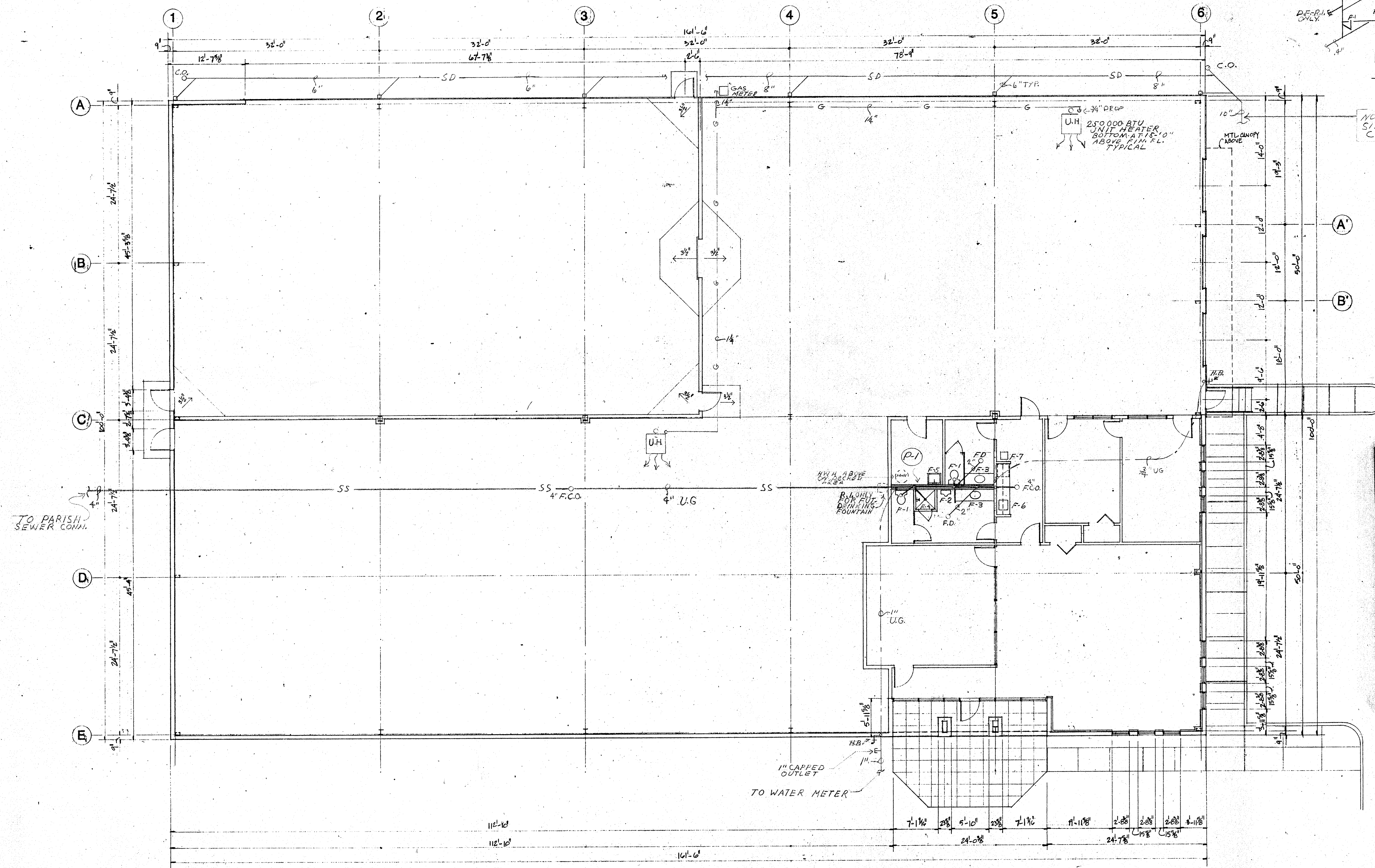


BRUNING 02-22 6371



**SYMBOL LEGEND**

|        |                |
|--------|----------------|
| SS     | SANITARY SEWER |
| S.D.   | STORM DRAIN    |
| G      | NAT. GAS       |
| U.G.   | UNDER GROUND   |
| H.B.   | HOSE BIBB      |
| U.H.   | UNIT HEATER    |
| F.D.   | FLOOR DRAIN    |
| C.W.   | COLD WATER     |
| F.C.O. | FLOOR CLEANOUT |
| R.I.   | ROUGH IN       |
| C.B.   | CATCH BASIN    |

NOTE: SEE MECH. SITE PLAN FOR CONTINUATION.

**PLUMBING FIXTURE SCHEDULE**

|     |   |
|-----|---|
| F-1 | Water Closet - "Kilgore" #109 WS Elongated, w/open front white seat less cover. |
| F-2 | Urinal - "Kilgore" #402 W/ 3/4" top spud and flush valve.                       |
| F-3 | Lav. - Counter Top - "Kilgore" #309 W/Kohler #11800 Faucet and Drain.           |
| F-4 | Shower - Aquaglass AG3674S W/Shower Door and Kohler #11730 Faucet & Head.       |
| F-5 | Utility Sink - "Fiat" #L-1-71-421 includes trim.                                |
| F-6 | Sink - Lounge - "Polar" #257-8 25"X22" W/Kohler #71920 Faucet.                  |
| F-7 | E.D.F. - "Sunrock" #NSP-4.  |
| RHW | Hot Water Heater #1 - 30 gal. Elec. "Rheem" #1V-30D.                            |

plumbing plan scale: 1/8"=1'-0"

|   |   |
|---|---|
| <p><b>CASERTA / CARROLL ARCHITECTS</b><br/>110 James Drive West / Suite 200 / St. Rose, LA 70087 / 504-466-0988</p> | <p>Professional Corporation</p>   |
|   | <p>PPG INDUSTRIES • TRAINING &amp; DISTRIBUTION CENTER<br/>James Business Park • St. Rose, Louisiana<br/>BRACKLEY &amp; VOELKEL • GENERAL CONTRACTORS</p> |
| <p>P.1</p>  | <p>10</p>   |
| <p>14</p>   | <p>14</p>   |
| <p>project no. 87094</p>  | <p>date 10 Dec. 87</p>  |
| <p>scale NOTED</p>  | <p>drawn by</p>   |
| <p>checked by</p>   | <p>revisions</p>  |
| <p>date</p>   | <p>date</p>   |