

PANEL: PNL #1
LOCATION: BREAK ROOM
FEEDER SOURCE: MDP

VOLTAGE: 120/208V, 3Ø, 4W 225 MAINS, MLO
ENCLOSURE: SURFACE MOUNTED W/EQUIPMENT GRND BAR

CKT. NO.	THHN WIRE SIZE	LOAD DESCRIPTION	BREAKER AMP POLE	LOAD (VA)			LOAD DESCRIPTION	THHN WIRE SIZE	CKT. NO.			
				AØ	BØ	CØ						
1	#12	ATRIUM LIGHTS	20 1	1300			2100	1	20	OFF. 1A2/TRAINING ROOM LIGHTS	#12	2
3	#12	PASSAGE/SECRETARY LIGHTS	20 1	1000			800	1	20	STO./LADIES/MEN/TOILET/LOCKER LIGHTS	#12	4
5	#12	BREAKROOM/LOBBY/ AC LIGHTS	20 1	1100			1900	1	20	PASSAGE/OFFICE 3/ LIGHTS	#12	6
7	#12	OFFICE 1 OUTLETS	20 1	960			960	1	20	ATRIUM OUTLETS	#12	8
9	#12	TRAINING ROOM OUTLETS	20 1	1120			960	1	20	OFFICE 2 OUTLETS	#12	10
11	#12	PASSAGE OUTLETS	20 1	800			800	1	20	LADIES/MEN/TOILET LOCKER OUTLETS	#12	12
13	#12	OFFICE 3/BREAKROOM OUTLETS	20 1	1120			840	1	20	SECRETARY OUTLETS	#12	14
15	#12	BREAK ROOM REFRIGERATOR	20 1	1500			800	1	20	LOBBY OUTLETS	#12	16
17	#12	BREAK ROOM MICROWAVE	20 1	500			640	1	20	SECRETARY QUAD OUTLETS	#12	18
19	#12	EMERGENCY LIGHTS	20 1	1400			600	1	20	BREAK ROOM DISHWASHER	#12	20
21	#12	2ND FLR. OFFICE 1 LIGHTS	20 1	600			800	1	20	EXIT LIGHTS	#12	22
23	#12	STAIR/ MEZZANINE/ PASSAGE LIGHTS	20 1	1000			1800	1	20	SMOKE DETECTORS	#12	24
25	#12	OFFICE 4 LIGHTS	20 1	600			900	1	20	2ND FLR. OFF. 2&3 & STORAGE LIGHTS	#12	26
27	#12	2ND FLR. OFFICE 2 OUTLETS	20 1	800			1200	1	20	2ND FLR. CONF./BATH/COPY STAIR LIGHTS	#12	28
29	#12	2ND FLR. PASSAGE OUTLETS	20 1	1280			960	1	20	2ND FLR. OFFICE 1 OUTLETS	#12	30
31	#12	2ND FLR. OFFICE 4 OUTLETS	20 1	960			960	1	20	2ND FLR. OFFICE 3/ PASSAGE OUTLETS	#12	32
33	#8	BREAK ROOM STOVE	50 3	4500			1120	1	20	2ND FLR. CONFERENCE/ MEZZANINE OUTLETS	#12	34
35	#8	BREAK ROOM STOVE	50 3	4500			160	1	20	2ND FLR. BATH GFI OUTLET	#12	36
37	#8	BREAK ROOM STOVE	50 3	4500			960	1	20	COPY ROOM OUTLETS	#12	38
39	#8	HOT WATER HEATER 40 GAL	40 2	9000			400	1	20	1ST & 2ND FLOOR RECESSED LIGHTS	#12	40
41	#8	HOT WATER HEATER 40 GAL	40 2	9000			200	1	20	CHANDELIER	#12	42
				TOTAL CONNECTED LOAD (VA)						GROUND BUS GROUND WIRE (G)		
				AØ= 14,960	BØ= 17,100	CØ= 17,140						

PANEL: PNL #2
LOCATION: WAREHOUSE
FEEDER SOURCE: MDP

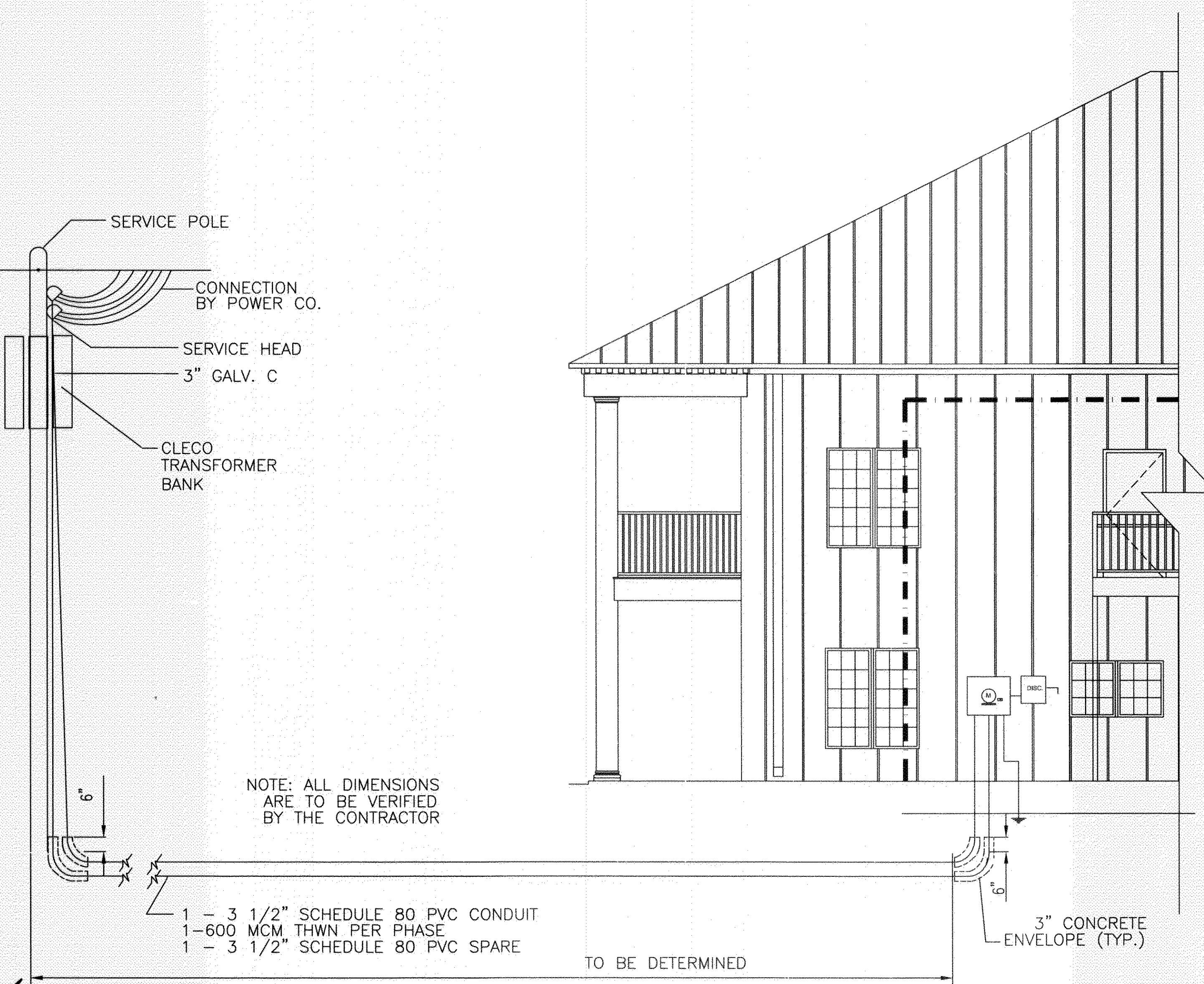
VOLTAGE: 120/208V, 3Ø, 4W 225 MAINS, MLO
ENCLOSURE: SURFACE MOUNTED W/EQUIPMENT GRND BAR

CKT. NO.	THHN WIRE SIZE	LOAD DESCRIPTION	BREAKER AMP POLE	LOAD (VA)			LOAD DESCRIPTION	THHN WIRE SIZE	CKT. NO.			
				AØ	BØ	CØ						
1	#12	BAY LIGHTS	20 1	1200			800	1	20	WAREHOUSE OUTLETS	#12	2
3	#12	WAREHOUSE OUTLETS	20 1	640			500	1	20	EXIT LIGHTS	#12	4
5	#12	EMERGENCY LIGHTS	20 1	400			1800	1	20	EXTERIOR LIGHT	#12	6
7	#12	SMOKE DETECTORS	20 1	200				1	20	SPARE		8
9	#12	EQUIP. BLDG. LIGHTS	20 1	1200				1	20	SPARE		10
11	#12	EQUIP. BLDG. OUTLETS	20 1	1200				1	20	SPARE		12
13		SPACE	020 1				500	1	20	EXTERIOR EMERG. LIGHTS	#12	14
15		SPACE	20 1					1	20	SPACE		16
17		SPACE	20 1					1	20	SPACE		18
19		SPACE	20 1					1	20	SPACE		20
21		SPACE	20 1					1	20	SPACE		22
23		SPACE	20 1					1	20	SPACE		24
25		SPACE	20 1					1	20	SPACE		26
27		SPACE	20 1					1	20	SPACE		28
29		SPACE	20 1					1	20	SPACE		30
31		SPACE	20 1					1	20	SPACE		32
33		SPACE	20 1					1	20	SPACE		34
35		SPACE	20 1					1	20	SPACE		36
37		SPACE	20 1					1	20	SPACE		38
39		SPACE	20 1					1	20	SPACE		40
41		SPACE	20 1					1	20	SPACE		42
				TOTAL CONNECTED LOAD (VA)						GROUND BUS GROUND WIRE (G)		
				AØ= 2,700	BØ= 2,340	CØ= 3,400						

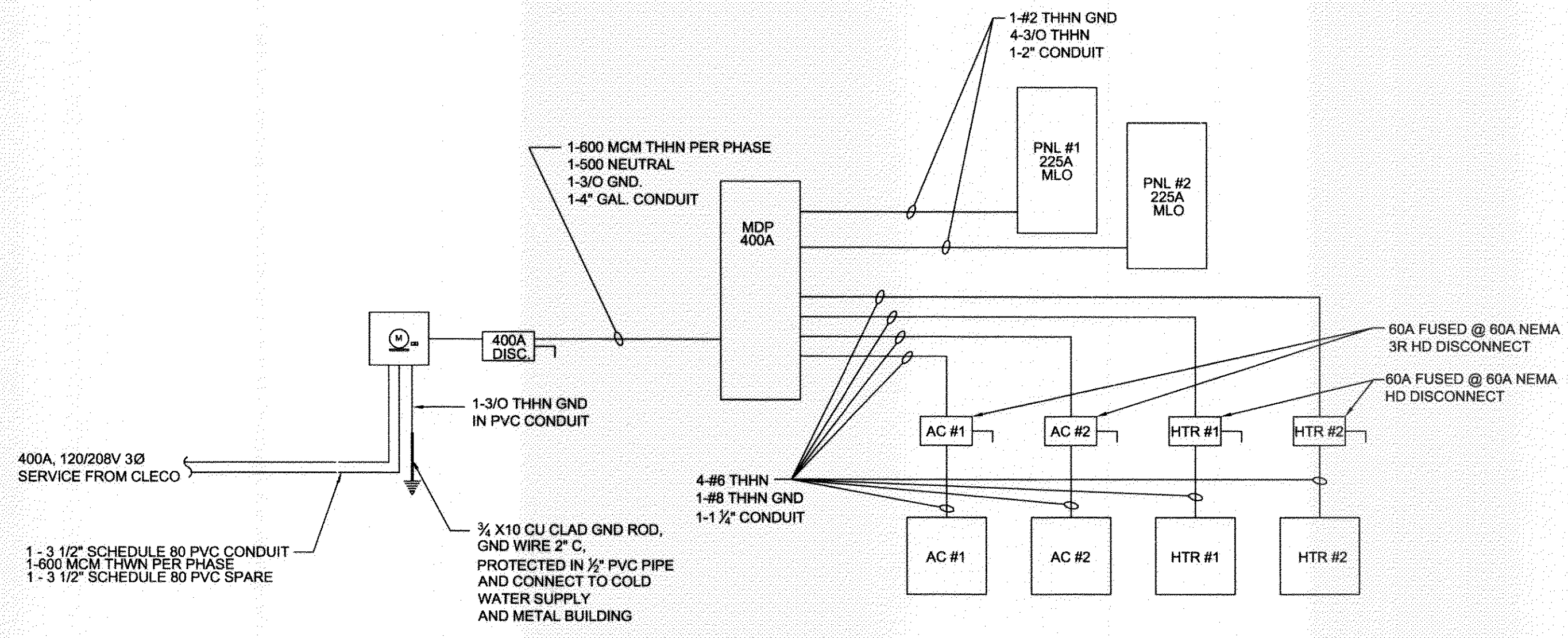
PANEL: MDP
LOCATION:
FEEDER SOURCE: CLECO

VOLTAGE: 208/120V, 400A 3Ø, 4W
ENCLOSURE: SURFACE MOUNTED W/EQUIPMENT GRND BAR

CKT. NO.	THHN WIRE SIZE	LOAD DESCRIPTION	BREAKER AMP POLE	LOAD (VA)			LOAD DESCRIPTION	THHN WIRE SIZE	CKT. NO.			
				AØ	BØ	CØ						
1									2			
3	#6	A/C 8 TONS	60 3	21,840			15,000	3	50	HEAT 15KW	#6	4
5									6			6
7									8			8
9	#6	A/C 8 TONS	60 3	21,840			15,000	3	50	HEAT 15KW	#6	10
11									12			12
13							14,960		2,700			14
15	3/0	PNL #1	225 3	17,100			2,340	3	225	PNL #2	3/0	16
17							17,140		3,400			18
19									1	20		20
21									1	20		22
23									1	20		24
25									1	20		26
27									1	20		28
29									1	20		30
				TOTAL CONNECTED LOAD (VA)						GROUND BUS GROUND WIRE (G)		
				AØ=42,220	BØ=44,000	CØ=45,100						



ELECTRICAL SERVICE DETAIL (SOUTH ELEVATION)
NTS



ELECTRICAL RISER DIAGRAM
NTS

ELECTRICAL LOAD SUMMARY - 600A SERVICE

LOAD SOURCE	3Ø-kVA	1Ø-kVA	OR/1Ø-kW	3Ø-kW
BUILDING LIGHTING	20.3k			
ELECTRIC WATER HEATING	9k			
HEAT PUMP				
SUPPLEMENTAL HEAT SYSTEM				
AIR CONDITIONING	43.6k			
ELECTRIC HEATING (CIRCLE - PRIMARY/SECONDARY)	30k			
COOKING	4.5k			
REFRIGERATION	1.5k			
RECEPTACLES (STANDARD)	19.7k			
RECEPTACLES (COMPUTER)				
TOTAL MOTORS (EXCLUDE HVAC)				
PARKING LOT / EXTERIOR LIGHTING	1.8k			
MISCELLANEOUS				
OTHER (SPECIFY)				
TOTAL	130.4k			

REVISED 01-30-08
REVISED ALL ELECTRICAL

SCHEDULES
 PYTHON CONSTRUCTION
 TRACT 361 OF N. OAKLAWN
 ST. TAMMANY PARISH, LA
 OFFICE/WAREHOUSE
DAMMON ENGINEERING, INC.
 1095 FLORIDA AVENUE 985-649-5832 SLIDELL, LA. 70458
 DAMMONENGINEERING.COM
 SCALE: AS NOTED
 FILE:
 JOB NO. 1595
 DATE: 03-08-05
 SHEET 17
 E-3
 OF 21