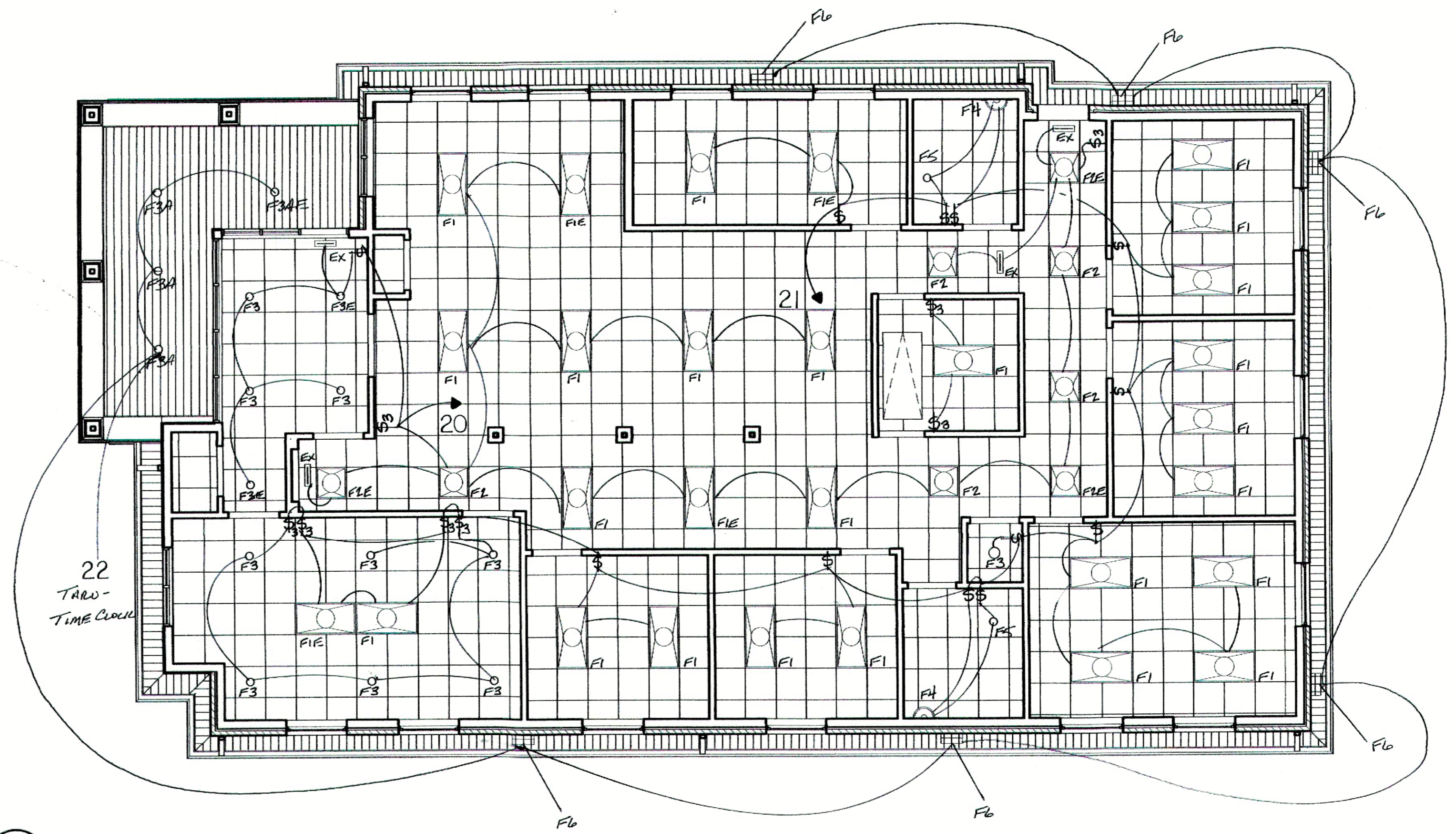


LIGHTING FIXTURE SCHEDULE

FIXTURE TYPE	MANUFACTURER	CATALOG #	WATTAGE
F1	HUBBELL	CCL24-5035	44 WATTS
F1E	HUBBELL	CCL24-5035-ELL14	44 WATTS
F2	HUBBELL	CCL22-3335	29 WATTS
F2E	HUBBELL	CCL22-3335-ELL14	29 WATTS
F3	LITON	CH618UE-D10/CR6L22SW-T35	18 WATTS
F3E	LITON	CH618UE-D10-EM/CR6L22SW-EMA-T35	18 WATTS
F3A	LITON	CH618UE-D10/CR6L22SW-T35	18 WATTS
F3AE	LITON	CH618UE-D10-EM/CR6L22SW-EMA-T35	18 WATTS
F4	BROWNLEE	5160-24-BN-H13-ECL-35K	13 WATTS
F5	BROAN	678	100 WATTS
F6	HUBBELL	SG1-40-4K7-FT-UNV-DB	38 WATTS
EX	COMPASS	CER	1 WATT

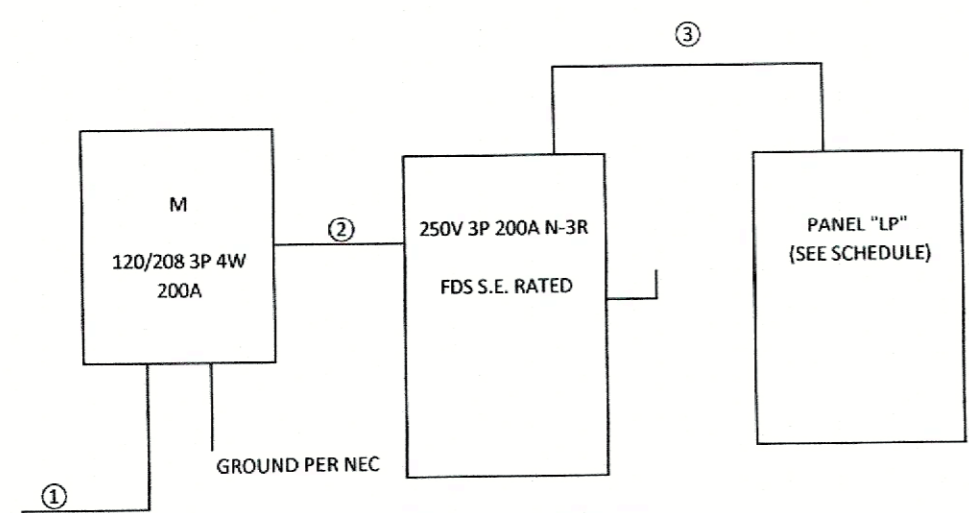


PROJECT NORTH

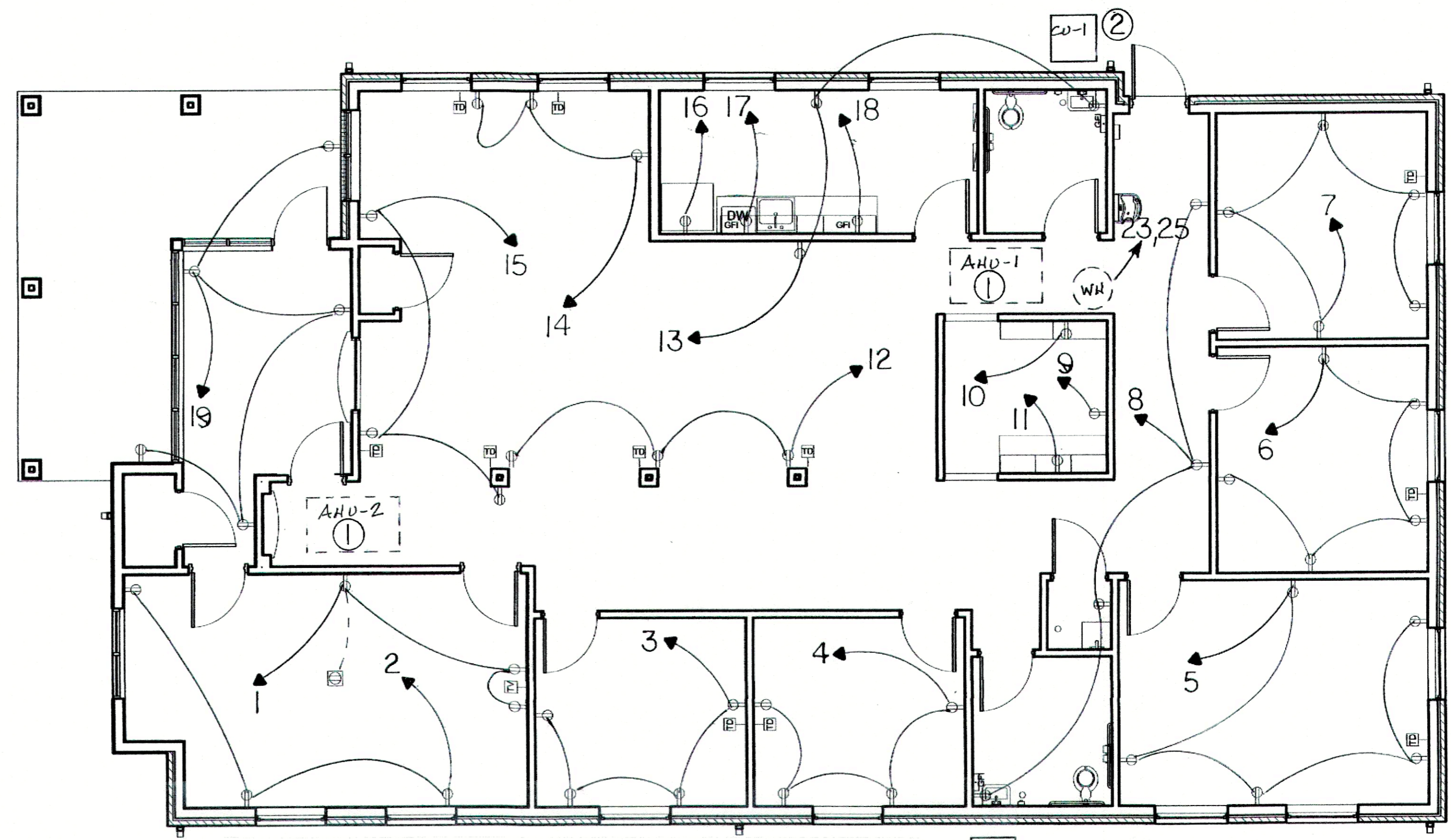
1 CEILING PLAN
3/16" = 1'-0"

PANEL "LP"
120/208 3P 4W 200A MLO N-1 FLUSH MOUNT

Circuit No.	Description	Conductor Size	Volt Amps A	Volt Amps B	Volt Amps C	Breaker Size	Breaker Size	Volt Amps A	Volt Amps B	Volt Amps C	Conductor Size	Description	Circuit No.	
1	RECEPTACLES	#12	800			1P 20A	1P 20A	600			#12	RECEPTACLES	2	
3	RECEPTACLES	#12	800			1P 20A	1P 20A	800			#12	RECEPTACLES	4	
5	RECEPTACLES	#12	1000			1P 20A	1P 20A	1000			#12	RECEPTACLES	6	
7	RECEPTACLES	#12	1000			1P 20A	1P 20A	800			#12	RECEPTACLES	8	
9	RECEPTACLES	#12	1750			1P 20A	1P 20A	1750			#12	RECEPTACLES	10	
11	RECEPTACLES	#12	1750			1P 20A	1P 20A	600			#12	RECEPTACLES	12	
13	RECEPTACLES	#12	600			1P 20A	1P 20A	1750			#12	RECEPTACLES	14	
15	RECEPTACLES	#12	600			1P 20A	1P 20A	1750			#12	RECEPTACLES	16	
17	RECEPTACLES	#12	1000			1P 20A	1P 20A	708			#12	REFRIGERATOR	18	
19	RECEPTACLES	#12	1000			1P 20A	1P 20A	300			#12	LIGHTING	20	
21	LIGHTING	#12	1141			1P 20A	1P 20A				#12	LIGHTING	22	
23	WATER HEATER	#10				1P 30A	1P 30A					SPACE	24	
25													26	
27	AHU-1	#8	3910			3P 40A	3P 40A	3910			#8	AHU-2	28	
29													30	
31													32	
33	CU-1	#10	2400			3P 30A	3P 30A	2400			#10	CU-2	34	
35													36	
37													38	
39													40	
41													42	
Phase			7310	8201	11290	Phase			6618	8510	7260			
Phase Tot.			13928	16711	18550	Phase Tot.			13928	16711	18550			
Total VA						Total VA			49189					



- ONE-LINE DIAGRAM**
- ① COORDINATE CONDUIT SIZE AND QUANTITY WITH POWER CO.
 - ② 4 - 3/0 MCM THHN AND 1#6 GROUND IN 2" CONDUIT
 - ③ 4 - 3/0 MCM THHN AND 1#6 GROUND IN 2" CONDUIT



SPECIFIC NOTES

- ① PROVIDE 250V 3P 60A N-1 FDS, FUSE PER MANUFACTURERS RECOMMENDATIONS
- ② PROVIDE 250V 3P 30A N-3R FDS, FUSE PER MANUFACTURERS RECOMMENDATIONS

PROJECT NORTH

2 FLOOR PLAN
3/16" = 1'-0"