

NORTH

SITE PLAN

50' UTILITY EASEMENT

50' SERVITUDE OF PASSAGE

50'-2 1/4"

1" = 20'-0"

DALWILL DRIVE

A1

02/15/23

A New Office Building

Dalwill Drive  
Mandeville, Louisiana

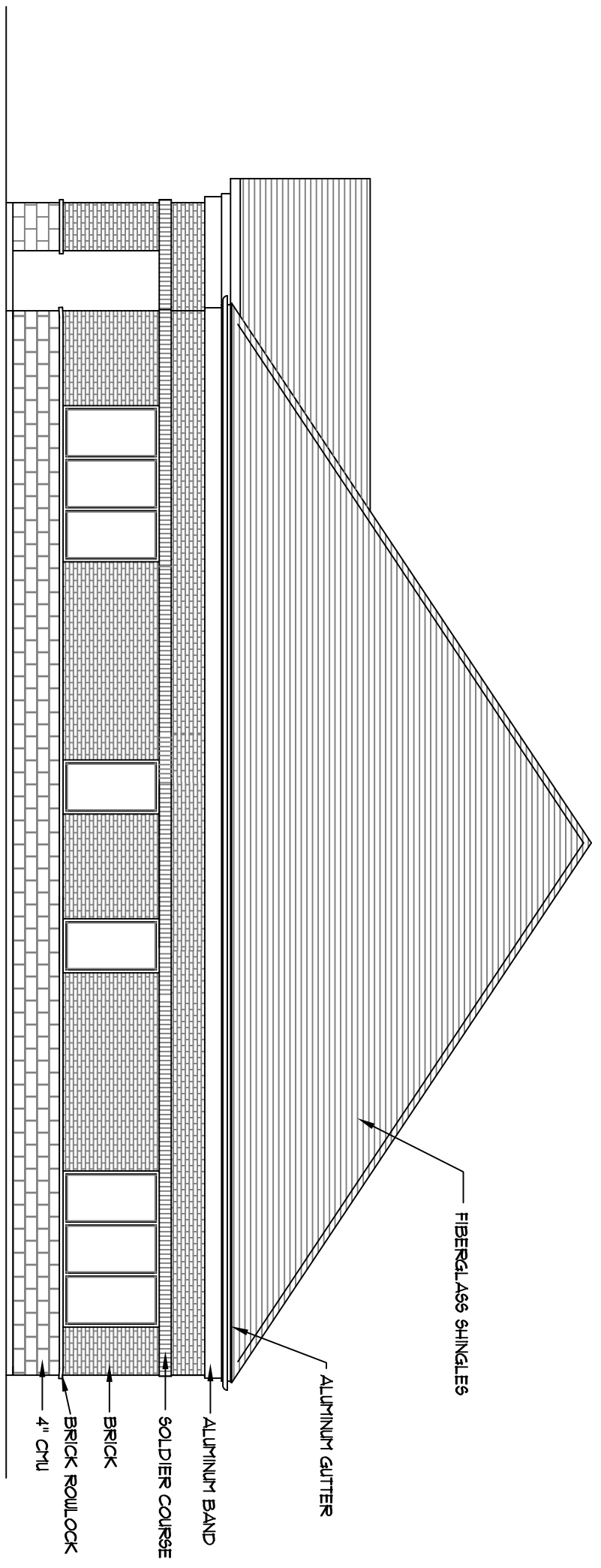
| OPENING SCHEDULE   |                      |  |
|--------------------|----------------------|--|
| MARK               | SIZE                 | DESCRIPTION  |
| 1/21               | 9'-0"-8'-0" X 3'-4"  | 3'-0" X 7'-0" ALUMINUM STOREFRONT DOOR WITH SIDELIGHTS AND FIXED TRANSOM WITH PANIC HARDWARE AND AUTO CLOSER |
| 2/15, 11/18, 22/26 | 3'-0" X 7'-0" X 3/8" | FLUSH S.G. WOOD DOOR   |
| 28, 29, 33-35      | 16'-0"               | 9'-0" FLUSH METAL DOOR W/ FIXED TRANSOM, PANIC HARDWARE AND AUTO CLOSER                                      |
| 16, 20             | 3'-0" X 7'-0" X 1/8" | FLUSH S.G. WOOD DOOR W/ AUTOMATIC CLOSER   |
| 19-21, 31, 32      | 3'-0" X 7'-0" X 1/8" | FLUSH S.G. WOOD DOOR W/ AUTOMATIC CLOSER   |
| A                  | 8'-0" X 5'-4"        | (3) SINGLE LIGHT FIXED STOREFRONT  |
| B                  | 3'-0" X 5'-4"        | SINGLE LIGHT FIXED STOREFRONT  |

NOTE: COMPACT WITH IBC 2009 2406.4.1 FOR GLAZING IN DOORS IN HALLWAYS LOCATIONS  
 ALL EXTERIOR DOORS SHALL BE OPERATED WITH PANIC HARDWARE  
 ALL GLAZING SHALL BE INSULATED LOW-E



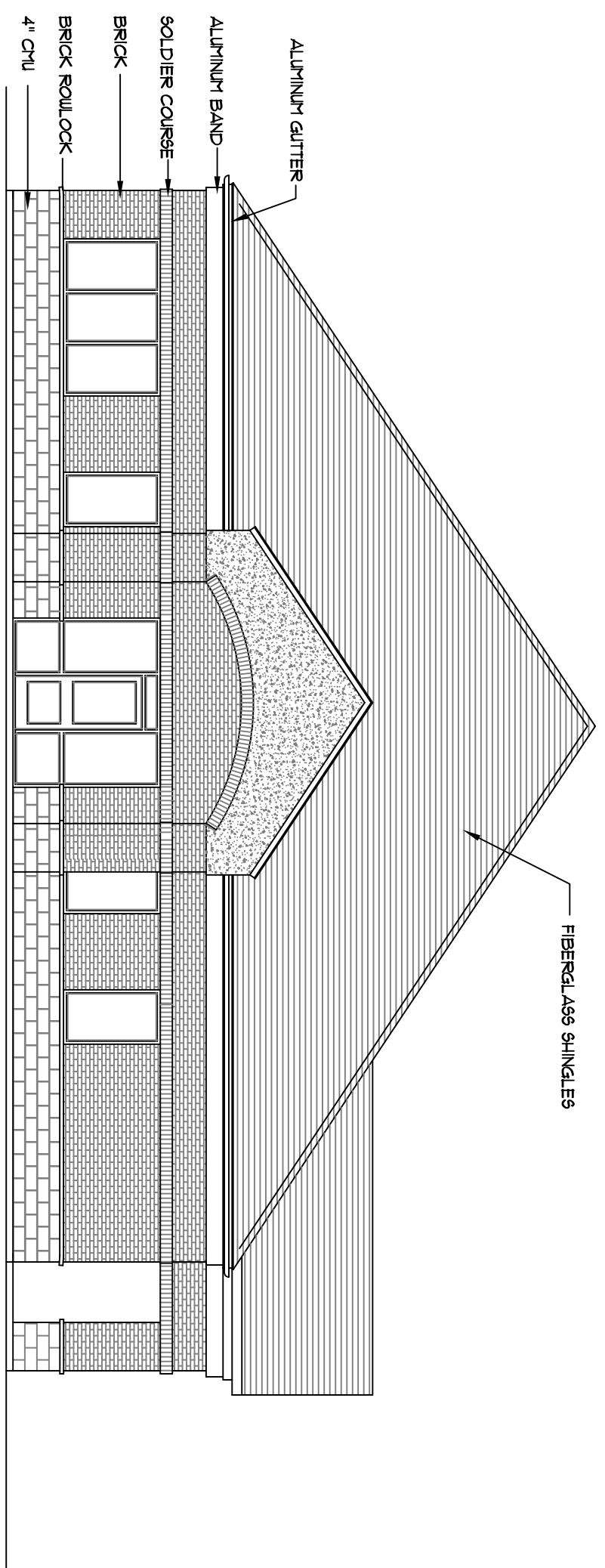
FLOOR PLAN

1/8" = 1'-0"



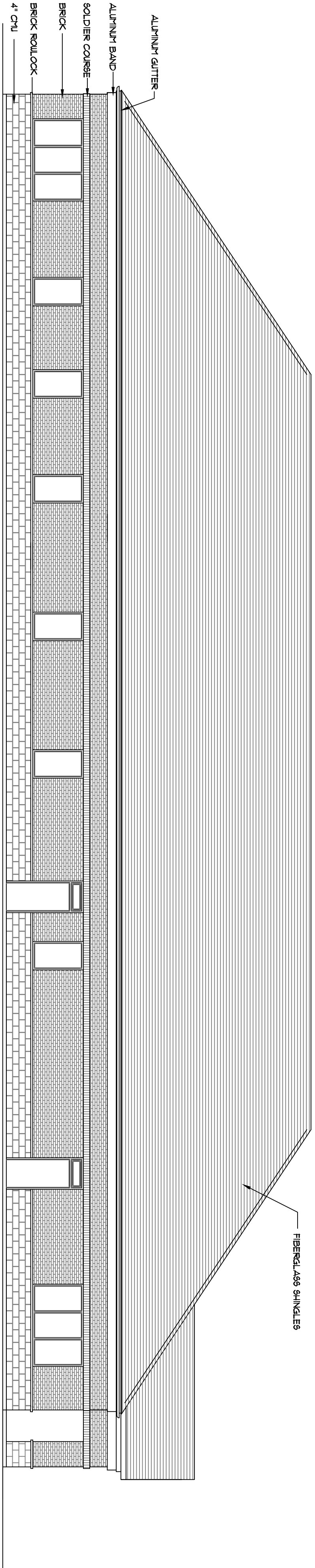
RIGHT SIDE ELEVATION

1/8" = 1'-0"



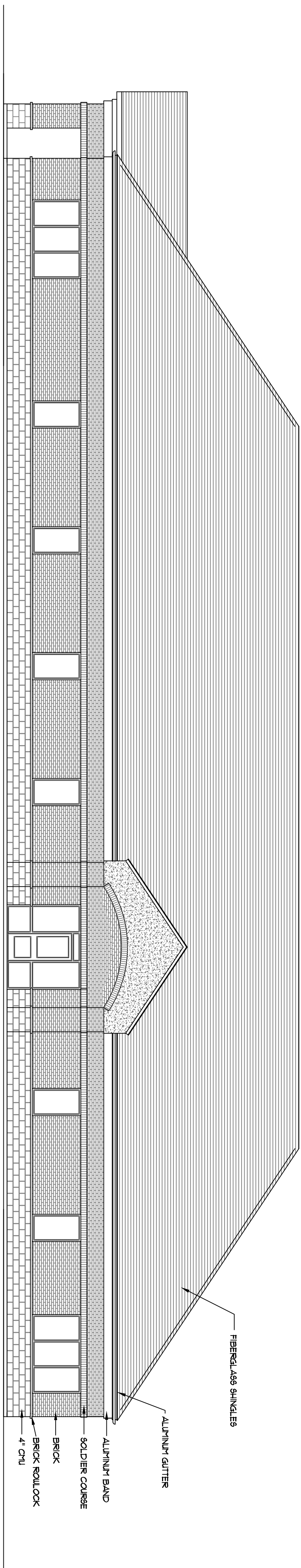
LEFT SIDE ELEVATION

1/8" = 1'-0"



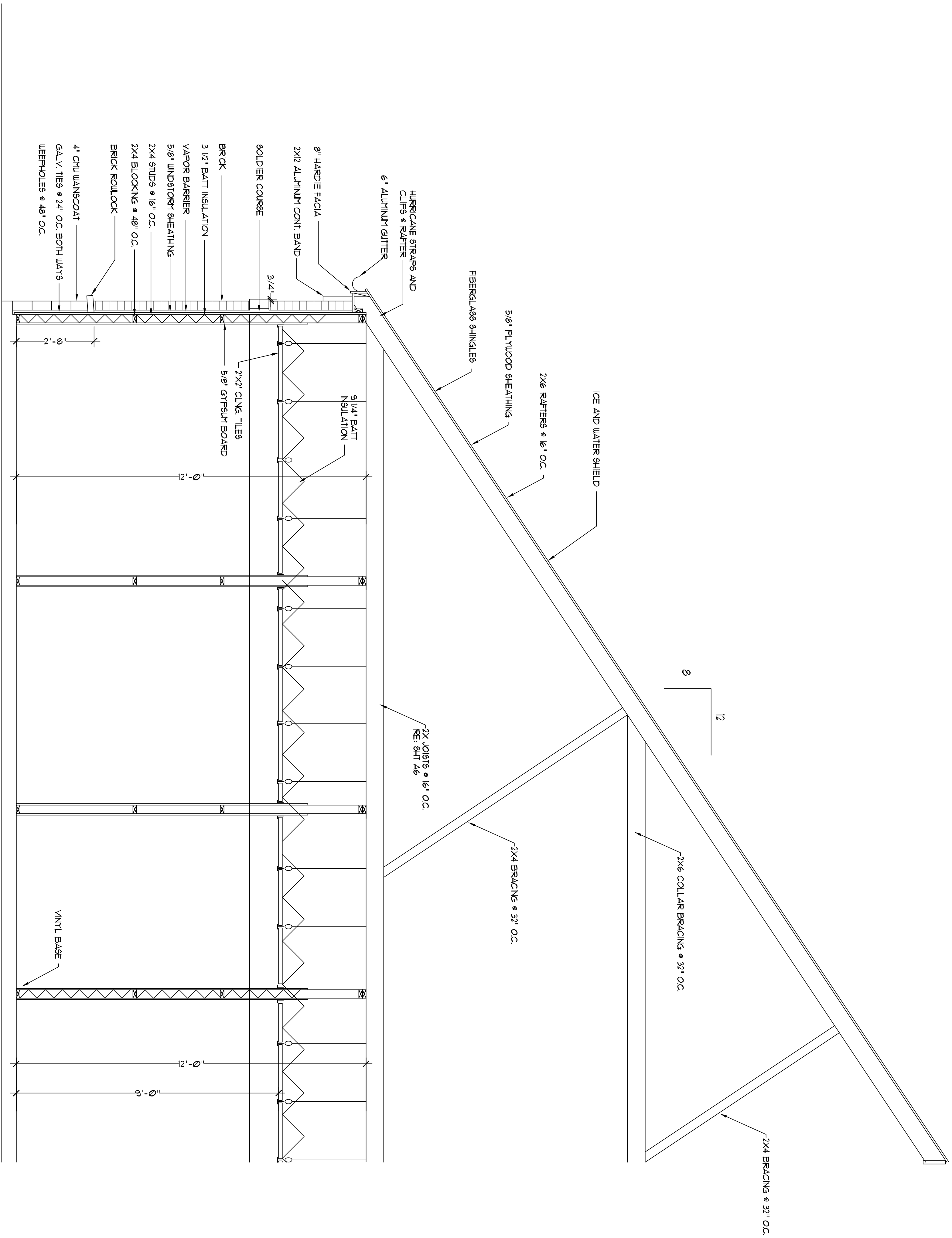
REAR ELEVATION

1/8" = 1'-0"



FRONT ELEVATION

1/8" = 1'-0"



BUILDING SECTION

1/2"=1'-0"