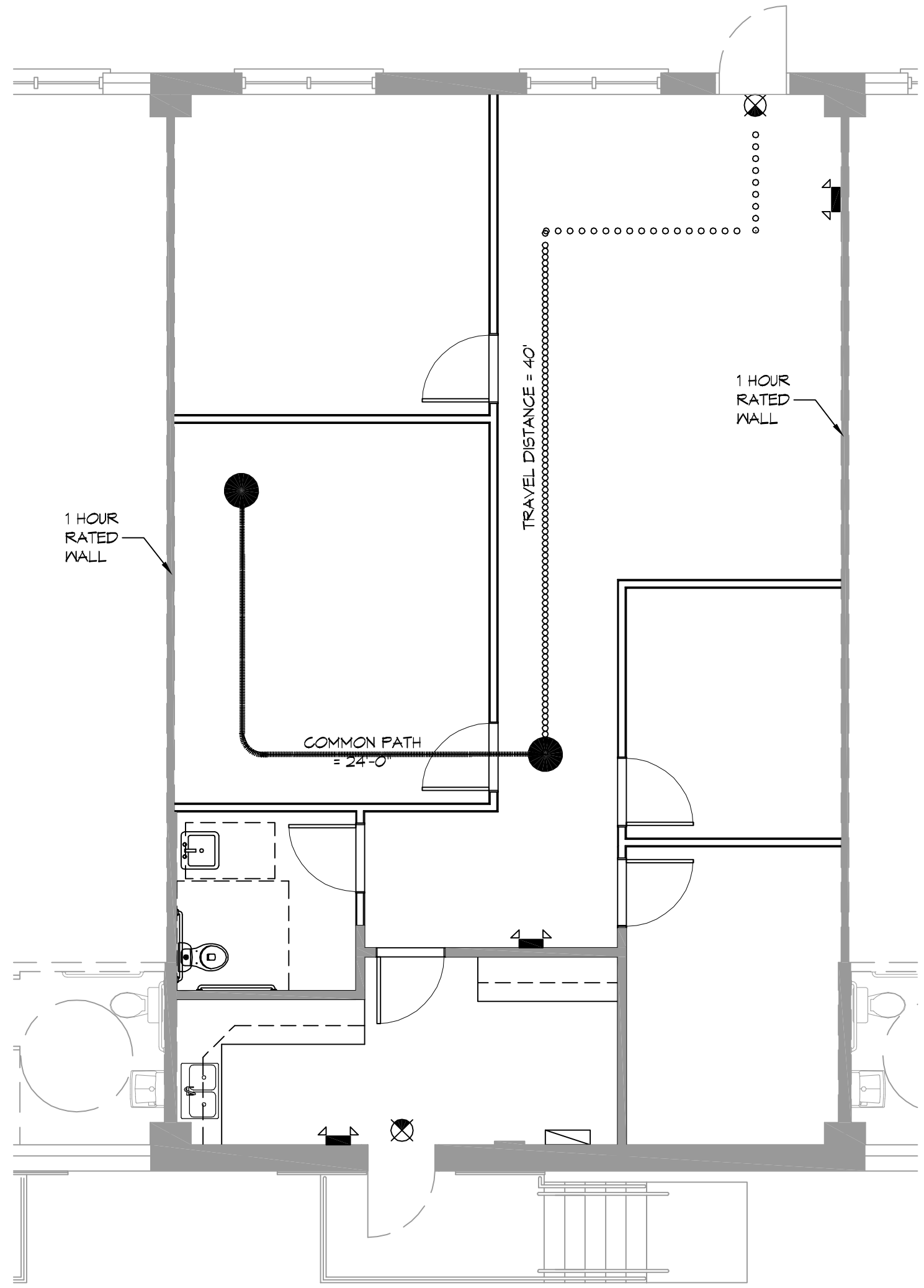


LIFE-SAFETY INFORMATION	
<b>APPLICABLE CODES</b>	
NFPA 101 LIFE-SAFETY CODE 2012	
OCCUPANCY TYPE(S) AND CHAPTER(S)	
BUSINESS (CHAPTER 38)	
MULTIPLE, MIXED, OR SEPARATE OCCUPANCY (REFERENCE CHAPTER 6)	
N/A	
<b>OCCUPANT LOAD FACTOR</b> (REFERENCE TABLE 7.3.1.2)	
1,500 SF / 100 SF PER OCCUPANT = 16 OCCUPANTS	
<b>CLASSIFICATION OF HAZARD OF CONTENTS</b>	
(REFERENCE: OCCUPANCY CHAPTER AND 6.2.2; SPECIFY LOW, ORDINARY, OR HIGH)	
<b>CONSTRUCTION TYPE(S)</b> (REFERENCE: CHAPTER 6, TABLE A.8.2.1.2 AND COMMENTARY TABLE B.1 IN HANDBOOK)	
(V000)	
<b>MINIMUM EXIT SEPARATION DISTANCE FOR REMOTELY LOCATED EXITS</b>	
(REFERENCE: SECTION 7.5; SPECIFY 1/2 OR 1/3 DIAGONAL DISTANCE OF AREA SERVED)	
1/3 DIAGONAL = 24'-10"	
<b>MAXIMUM DEAD-END CORRIDORS</b> (REFERENCE: OCCUPANCY CHAPTER AND TABLE A.7.6)	
50'	
<b>MAXIMUM COMMON PATH OF TRAVEL DISTANCE</b> (REFERENCE: OCCUPANCY CHAPTER AND TABLE A.7.6)	
100'	
<b>MAXIMUM TRAVEL DISTANCE TO EXITS</b> (REFERENCE: OCCUPANCY CHAPTER AND TABLE A.7.6)	
300'	
MAIN ENTRANCE MUST BE SIGNED TO ACCOMMODATE 1/2 OCCUPANT LOAD OF BUILDING	
<b>EXTINGUISHMENT REQUIREMENTS</b> SPRINKLERED	
<b>DETECTION, ALARM, AND COMMUNICATION SYSTEMS</b> NO	
<b>ALLOWABLE HEIGHT AND BUILDING AREA</b> PER IBC EQUIVALENT CONSTRUCTION TYPE	

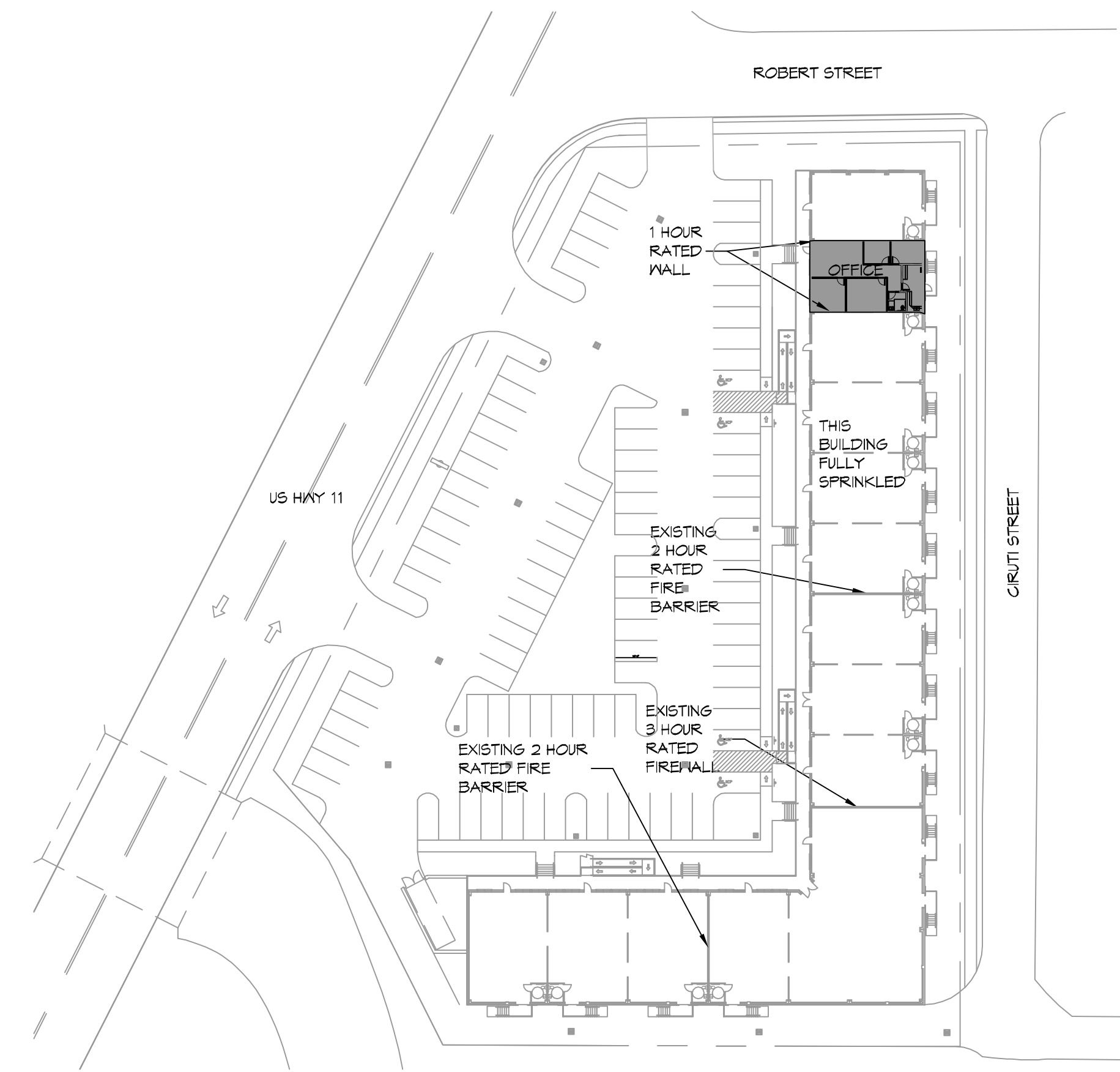
BUILDING CODE INFORMATION	
<b>APPLICABLE CODES</b>	
IBC 2012	
<b>BUSINESS GROUP B</b> (IBC 2012 CHAPTER 13)	
<b>OCCUPANT LOAD CALCULATIONS</b> (TABLE 1004.1.1)	
BUSINESS = 1,500 SQ FT 100 SF PER OCCUPANT (GROSS) 16 OCCUPANTS	
<b>CONSTRUCTION TYPE(S)</b> (TABLE 503)	
VB (SECTION 503)	
<b>ALLOWABLE HEIGHT AND BUILDING AREA LIMITED BY TYPE OF CONSTRUCTION</b>	
MAXIMUM HEIGHT IN STORES (SECTION 503 & 504, TABLE 503) 3	
MAXIMUM AREA IN SQUARE FEET (SECTION 503, 506 & 507, TABLE 503) 18,000	

WIND SPEED DESIGN REQUIREMENTS	
THIS BUILDING SHALL BE DESIGNED WITH IBC SEC 1609 AS A FULLY ENCLOSED BLDG USING THE FOLLOWING INFORMATION:	
WIND DESIGN DATA:	
DETERMINATION OF WIND LOADS SHALL BE IN ACCORDANCE WITH IBC SEC 1609.3 (1), (2), OR (3) DEPENDING ON THE RISK CATEGORY	
WIND SPEED $V_{ult}$ : (3 SECOND GUST) =	131 MPH (IBC FIG 1609.3(1))
NOMINAL DESIGN WIND SPEED $V_{std}$ =	102 MPH ( $V_{ult} \times (0.6)^{1/2}$ )
RISK CATEGORY: CATEGORY II BLDG	SURFACE ROUGHNESS = B
TOPOGRAPHIC FACTOR = 1	EXPOSURE = B
DESIGN WIND PRESSURE (ASCE 7-10 TABLE 28.6-1):	31.7 PSF
INTERNAL PRESSURE COEFFICIENT (ASCE 7-10 TABLE 26.11-1):	+ 0.18
LIVE LOADS (IBC SEC 1607)	
OFFICE LOBBIES & CORRIDORS 1ST FLOOR (IBC TABLE 1607.1):	100 PSF
OFFICES (IBC TABLE 1607.1):	50 PSF
ROOF LIVE LOADS (IBC TABLE 1607.1):	20 PSF UNIFORM, 300 LB CONCENTRATED
SNOW LOADS (IBC SEC 1608):	
GROUND SNOW LOAD (IBC FIG 1608.2):	5 PSF

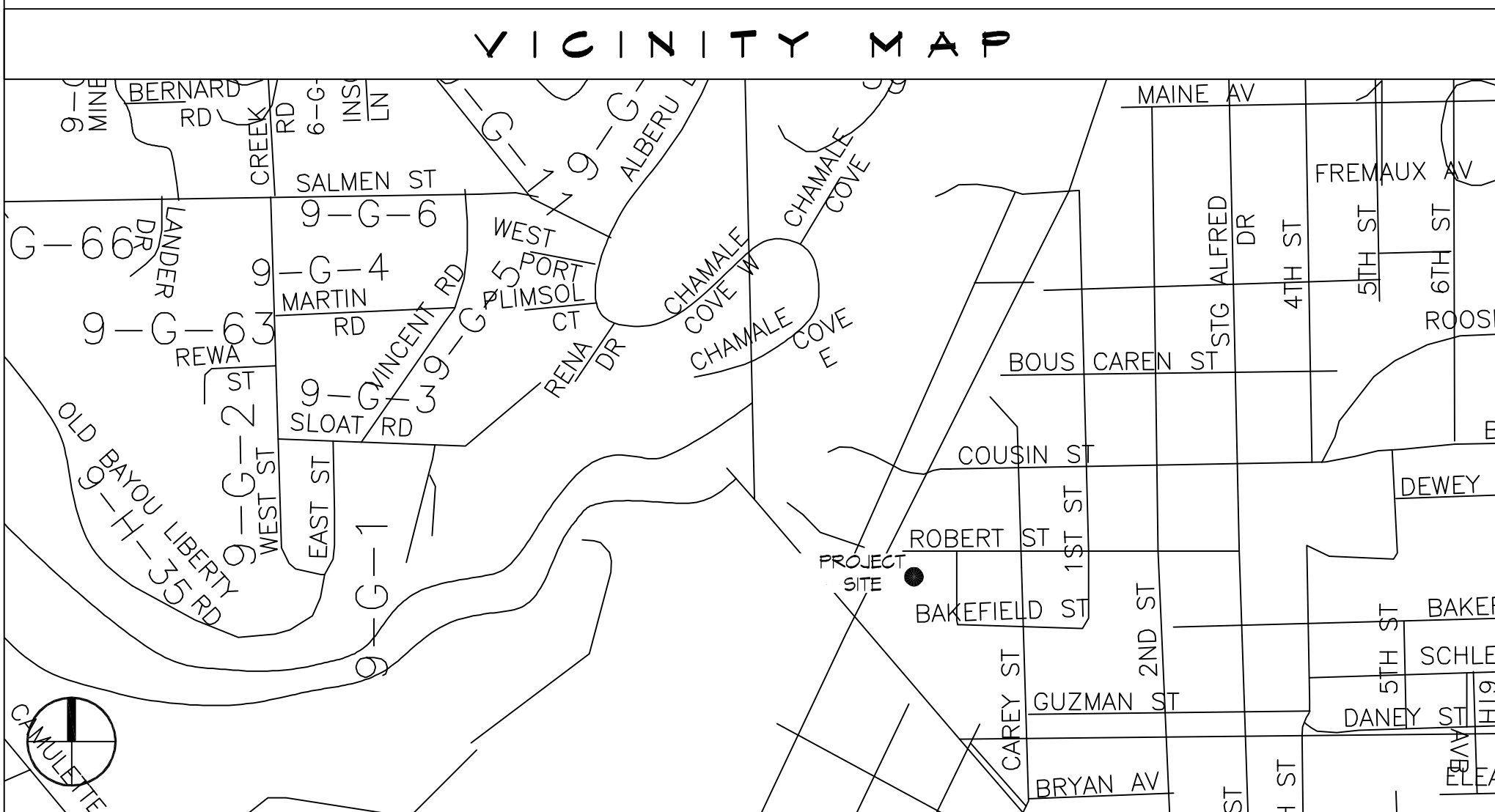
LIFE-SAFETY LEGEND	
SYMBOL	DESCRIPTION
	EXITS
	DOOR FIRE RATING (MINUTES)
	DOOR WIDTH/EGRESS CAPACITY
	EXIT LIGHT
	FIRE EXTINGUISHER IV WALL MTD BRACKET
	COMMON PATH OF TRAVEL
	TRAVEL DISTANCE
	DESIGN POINT



**LIFE-SAFETY PLAN**  
SCALE: 1/8" = 1'-0"



**SITE PLAN**  
SCALE: 1" = 50'-0"



**VICINITY MAP**

SHEET INDEX	
SHEET #	SHEET TITLE
G101	GENERAL INFORMATION SHEET
G102	ACCESSIBILITY INFORMATION
A101	FLOOR PLAN
M/P 101	MECHANICAL FLOOR PLAN, SCHEDULES & DETAILS
E101	POWER AND LIGHTING PLAN

- | GENERAL NOTES |   |
|---------------|---|
| 1.            | ALL MATERIALS AND WORK, INCIDENTAL TO THE CONSTRUCTION OF THIS PROJECT, SHALL CONFORM TO ALL GOVERNING CODES, AND REGULATIONS OF AGENCIES IN AUTHORITY.                     |
| 2.            | CONTRACTOR SHALL PROVIDE ALL PUBLIC PROTECTIONS NECESSARY AS REQUIRED BY LAW.   |
| 3.            | THE DRAWINGS AND ANY SUBSEQUENTLY ISSUED ADDENDA, AMENDMENTS OR SUCH CHANGE ORDERS APPROVED BY THE OWNER AND THE CONTRACTOR ARE PART OF THESE CONTRACT DOCUMENTS.           |
| 4.            | DO NOT SCALE DRAWINGS. CONSULT WITH THE ENGINEER REGARDING ANY ITEMS IN THE CONTRACT DOCUMENTS THAT REQUIRE CLARIFICATION.  |
| 5.            | TRASH SHALL BE REMOVED FROM THE SITE NOT LESS THAN TWICE MONTHLY.   |
| 6.            | THE GENERAL CONTRACTOR SHALL VERIFY EXISTING CONDITIONS PRIOR TO COMMENCING WORK AND REPORT ANY AND ALL DISCREPANCIES TO THE ARCHITECT.                                     |
| 7.            | CONTRACTOR VEHICLES AND EQUIPMENT NECESSARY FOR CONSTRUCTION MAY BE PARKED ON THE SITE. OTHER VEHICLES PARKED ON THE SITE REQUIRE THE OWNER'S PERMISSION.                   |
| 8.            | ALL MATERIALS/EQUIPMENT SHALL BE INSTALLED PER MANUFACTURER'S RECOMMENDATIONS. WORK NOT CONSISTENT WITH MANUFACTURER'S RECOMMENDATIONS WILL BE REJECTED BY OWNER/ARCHITECT. |

**DAMMON ENGINEERING, INC.**  
LOUISIANA & MISSISSIPPI

www.dammonengineering.com  
info@dammonengineering.com  
504 Old Spanish Trail  
Bossier, LA 70608

Chief Engineer: Brian Whitich, PE

REVISIONS	DATE
#	DESCRIPTION

SEAL:

NEW OFFICE  
**EDWARD JONES**  
2306 FRONT STREET  
SUITE 3  
SLIDELL, LA

**G101**

SHEET No: 1 of 15







