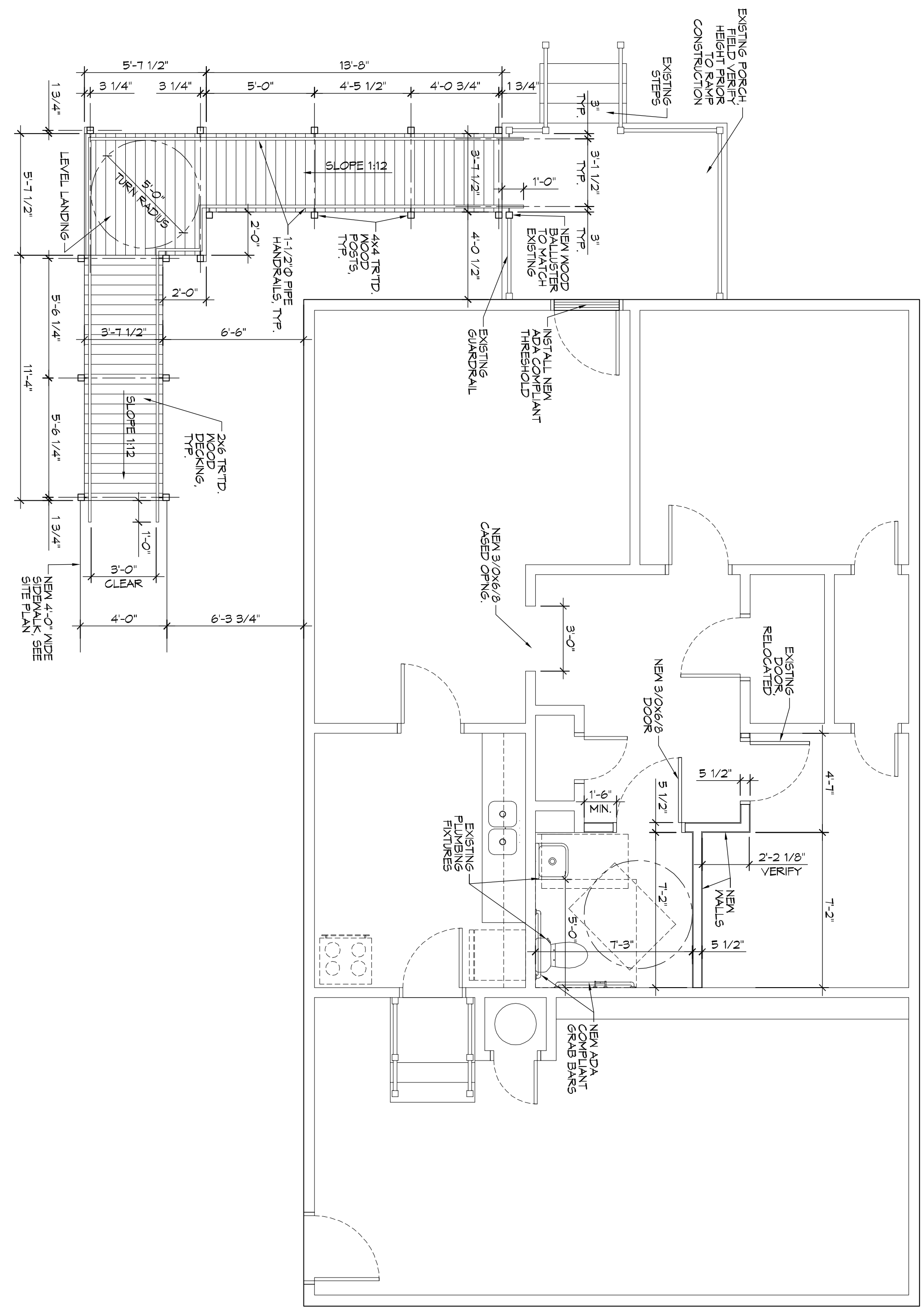


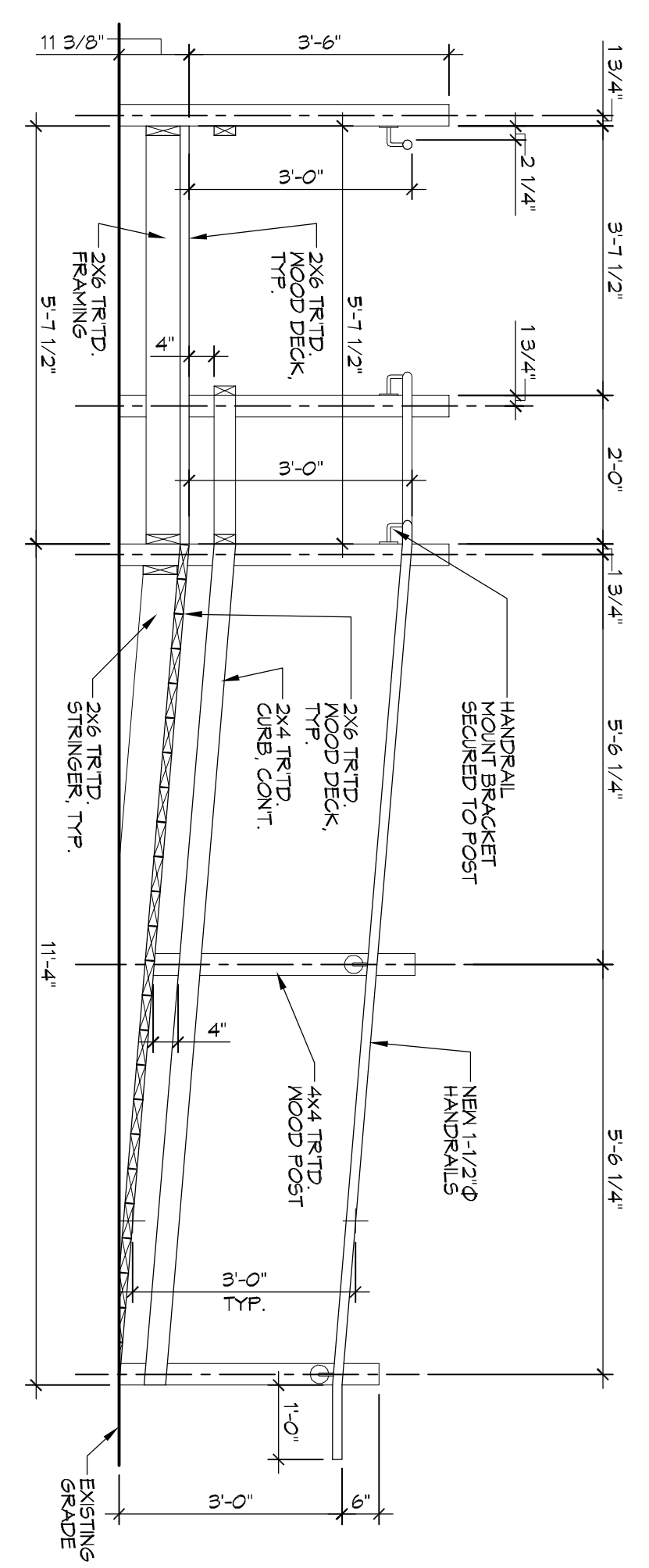
2 DEMO PLAN
SCALE: 1/2"=1'-0"

DEMOLITION PLAN



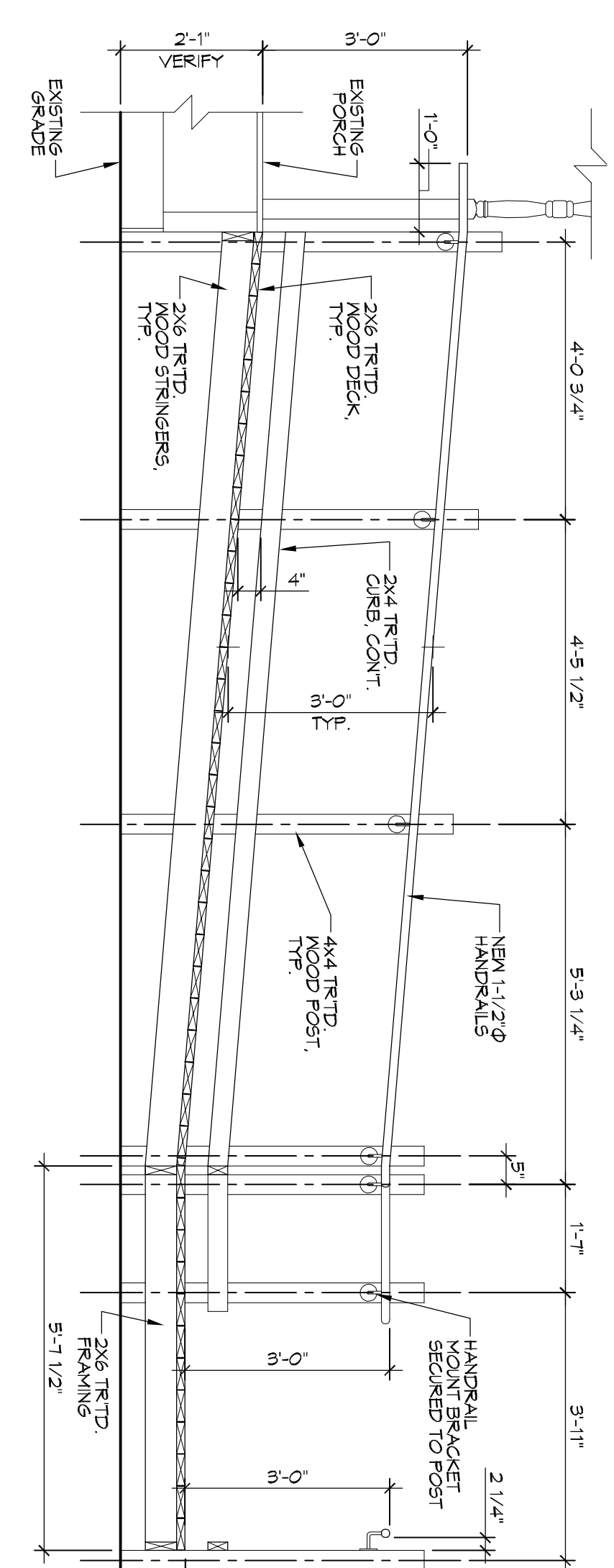
1 FLOOR PLAN
SCALE: 1/2"=1'-0"

NEWLY RENOVATED FLOOR PLAN WITH EXTERIOR H/C RAMP



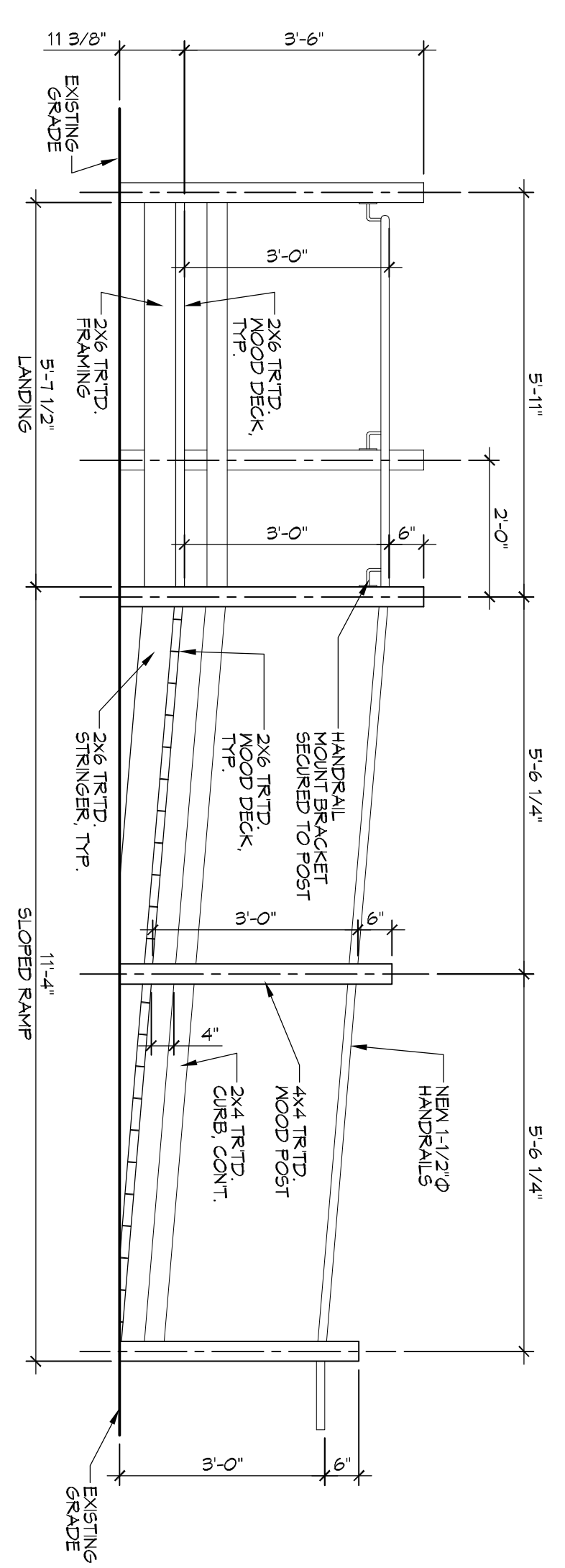
6 RAMP SECTION
SCALE: 1/2"=1'-0"

HANDICAP RAMP SHORT SIDE SECTION



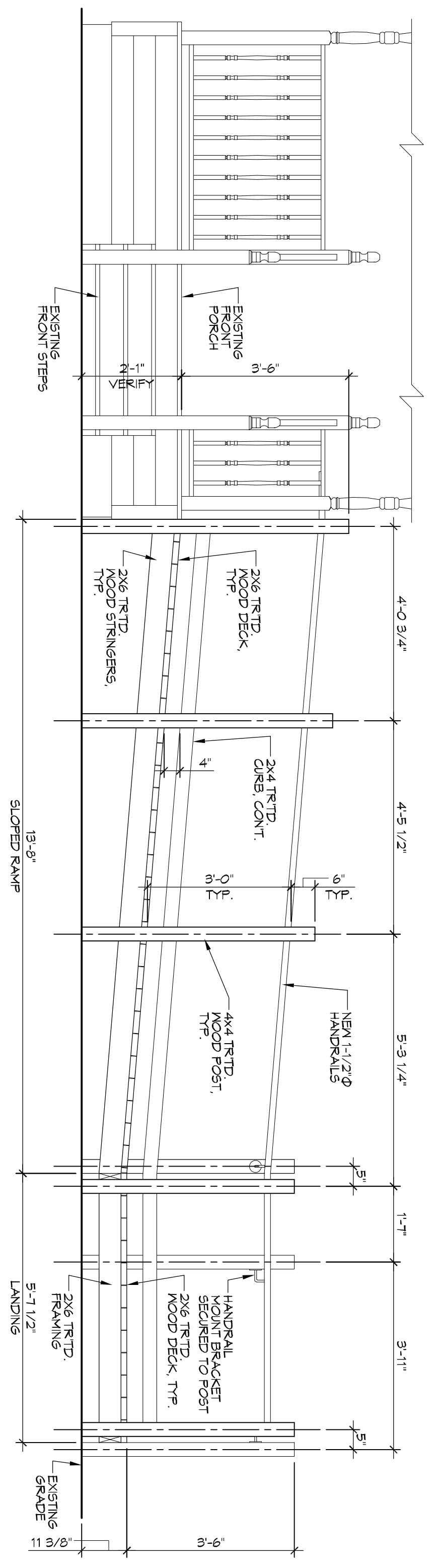
5 RAMP SECTION
SCALE: 1/2"=1'-0"

HANDICAP RAMP LONG SECTION



4 RAMP ELEVATION
SCALE: 1/2"=1'-0"

HANDICAP RAMP SIDE ELEVATION



3 RAMP ELEVATION
SCALE: 1/2"=1'-0"

HANDICAP RAMP FRONT ELEVATION

- DEMOLITION NOTES**
- REMOVE ALL WALLS (GYPSUM BOARD, STUDS, OTHER FRAMING) AS INDICATED ON DEMOLITION DRAWINGS, ALONG WITH ANY ELECTRICAL AND MECHANICAL ITEMS.
 - REMOVE ALL EXISTING INTERIOR WALLS, PARTITIONS, DOORS, OR REPAIRABLE ITEMS. THE CONTRACTOR SHALL COORDINATE WITH THE OWNER THE SHUT-DOWN AND STARTUP SEQUENCE WITH THE NEW ELECTRICAL AND MECHANICAL WORK.
 - REMOVE ALL DOORS AND FRAMING WHERE INDICATED ON DRAWINGS.
 - REMOVE ALL PLUMBING FIXTURES WHERE INDICATED ON DRAWINGS. CAP ALL DRAIN LINES, WATER LINES, ETC.
 - THE CONTRACTOR IS RESPONSIBLE TO COMPLY WITH ALL LOCAL, STATE AND FEDERAL REGULATIONS IN THE REMOVAL, DEMOLITION OF ANY HAZARDOUS MATERIALS.
 - THE CONTRACTOR IS RESPONSIBLE FOR OBTAINING ALL PERMITS REQUIRED BY LOCAL AUTHORITIES.
 - THE CONTRACTOR IS RESPONSIBLE FOR OBTAINING APPROVALS AND NOTIFICATIONS TO ALL LOCAL, STATE, AND FEDERAL AUTHORITIES.
 - THE CONTRACTOR IS RESPONSIBLE FOR ANY DAMAGE TO ITEMS THAT ARE INTENDED TO REBAND AND SHALL REPAIR ANY DAMAGED ITEMS TO LIKE NEW CONDITION.
 - IF NOT SHOWN ON THE DEMOLITION DRAWINGS, THE CONTRACTOR SHALL REMOVE ALL EXISTING MATERIALS AS NECESSARY TO COMPLETE ALL DOCUMENTS.
 - SAVAGE RIGHTS FOR ALL DEMOLISHED MATERIALS SHALL FIRST BE GIVEN TO THE OWNER. ANY MATERIALS NOT REPAIRED BY THE OWNER SHALL BE REMOVED FROM THE SITE AND DEPOSED OF BY THE CONTRACTOR AT THE CONTRACTOR'S EXPENSE.

DAMMON ENGINEERING, INC.
LOUISIANA & MISSISSIPPI

Chief Engineer: Brian Mstich, PE
554 Old Spanish Trail
Slidell, LA 70458

www.dammonengineering.com
info@dammonengineering.com
PH: 985.649.5832 F: 985.641.5950

REVISIONS		DATE
#	DESCRIPTION	

A OFFICE BUILDING & SITE RENOVATION FOR

LLW & Z

John FRAZIER
1882 7TH STREET
SLIDELL, LA 70458

JOB NO: - DATE: 04-20-2016
DRAWN BY: JTL CHECKED BY: JS

SHEET TITLE: RENOVATED FLOOR PLAN & DEMO PLAN

DRAWING NUMBER: A101

A101

3 of 3