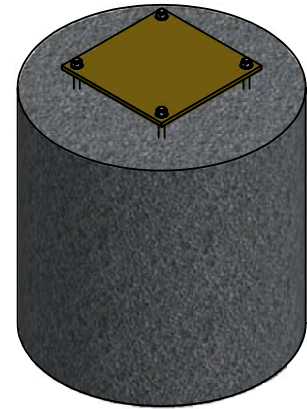


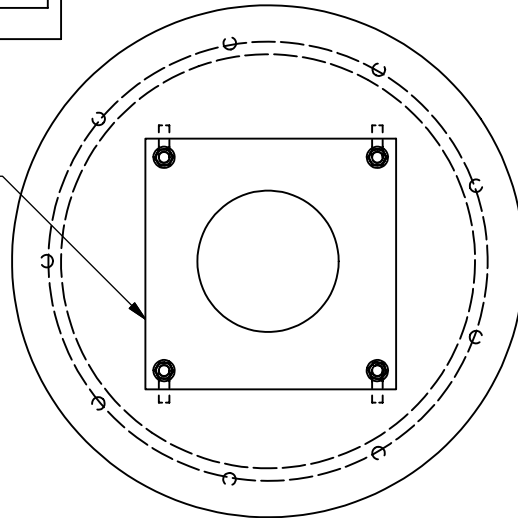
FOOTING DETAIL 'C'

CONCRETE VOLUME: 0.233 CU. YD/.178 CU. M

FOOTING IS A RECOMMENDATION ONLY.
CHANGES MAY BE REQUIRED TO MEET WITH LOCAL
BUILDING CODES AND PROFESSIONAL PRACTICES.



REFER TO TEMPLATE
FOR DETAILS
TPW-03002 (12"x 12")



WATERPLAY COMPONENT

(4) ANCHOR BOLTS
REFER TO COMPONENT SPECS

25 MPA (3600 P.S.I.)
CONCRETE

(9) 15M (5/8") X 19" (482mm) LONG
@ MAX 8" (203 mm) O.C.
VERT. SKIN REINF

(4) 10M (3/8") CIRCULAR
TIES @ MAX 6" (152 mm) O.C.
W /MIN 1 1/2" (38mm) COVER

1 1/2"
[34 mm] MIN

1 1/2"
[38 mm] MIN

2"
[51 mm]

6" EMBEDMENT
[152 mm]

2'-0"
[610 mm]

Ø2'-0"
[610 mm]

GRANULAR BASE BETWEEN
FOOTING AND COMPACT SUBGRADE
MAYBE REQUIRED TO MEET LOCAL CODES