

N 90°00'00" W - 805.53'

PROPOSED TRACT 2D-2-A  
76,556 ACRES  
3,337,749 SQ. FT.

S 00°00'00" W - 138.51'

N 01°52'02" E - 192.70'

DEDICATED DRAINAGE  
SERVITUDE IN FAVOR OF  
MULTIFAMILY PROPERTY  
3.49 ACRES

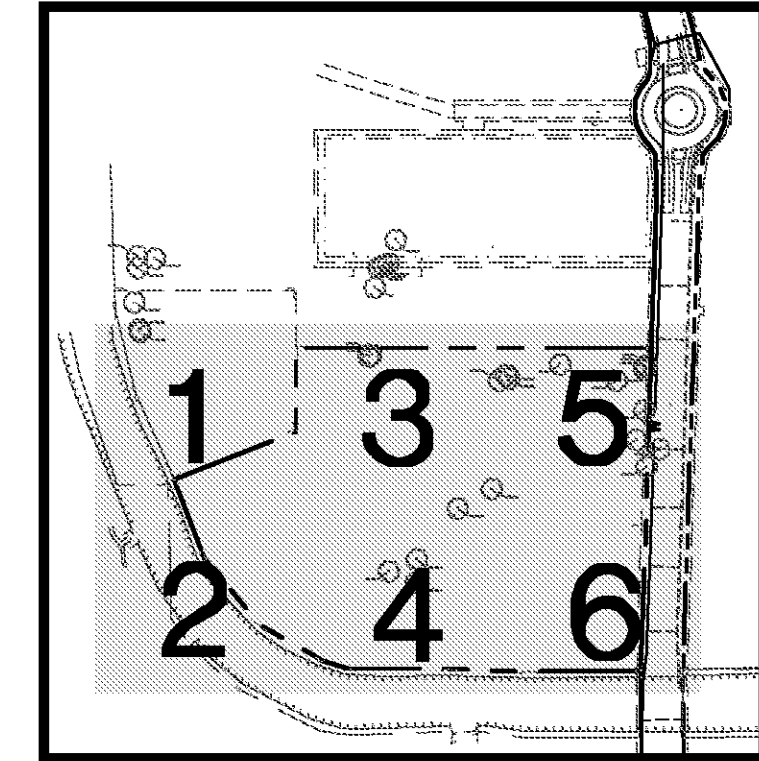
WATER QUALITY POND

W-14 CANAL

TOWN CENTER PARKWAY

TOWN CENTER PARKWAY  
(BY OTHERS)

W-14 CANAL  
Act of Indebtedness and Security  
Instrument No. 1907812



KEY MAP  
N.T.S.

LEGEND - STRIPING

- SWSL/4" - SINGLE WHITE SOLID LINE / 4" WIDE
- DYSL/4" - DOUBLE YELLOW SOLID LINE / 4" WIDE EACH
- YSL/4" - SINGLE YELLOW SOLID LINE / 4" WIDE
- SWD/4" - SINGLE WHITE DASHED LINE / 4" WIDE
- SBSL/4" - SINGLE BLUE SOLID LINE / 4" WIDE
- SWSL/24" - SINGLE WHITE SOLID LINE / 24" WIDE
- SWSL/8" - SINGLE WHITE SOLID LINE / 8" WIDE

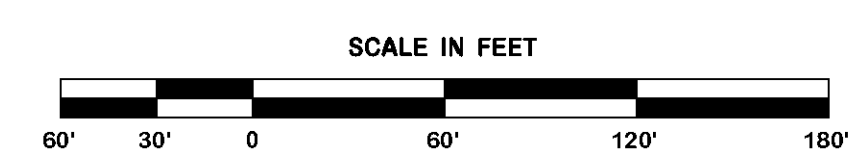
EXISTING LEGEND

- FOUND PROPERTY CORNER (AS NOTED)
- SET 3/4" IRON ROD
- EXISTING POWER POLE
- EXISTING POWER POLE WITH LIGHT
- EXISTING PARKING LOT LIGHT
- EXISTING GUY ANCHOR
- EXISTING TELEPHONE PEDESTAL
- EXISTING OVERHEAD POWER LINE
- EXISTING GAS METER
- EXISTING GAS VALVE
- EXISTING BARB WIRE FENCE LINE
- EXISTING WIRE MESH FENCE LINE
- EXISTING HIGH DENSITY POLYETHYLENE PIPE 12" HDPE
- EXISTING PIPE BOLLARD
- EXISTING MAILBOX
- ELEVATION OF TOP OF STRUCTURE TOP = 18.00
- ELEVATION OF BOTTOM OF STRUCTURE INV. = 15.00
- EXISTING SPOT ELEVATION
- ELEVATION OF TOP OF CURB 18.50 TC
- ELEVATION OF FACE OF CURB 18.00 FC
- EXISTING SEWER MANHOLE
- EXISTING SEWER CLEANOUT
- EXISTING DRAINAGE MANHOLE
- EXISTING SUBSURFACE DRAINAGE
- EXISTING CATCH BASIN/DROP INLET
- EXISTING FIRE HYDRANT
- EXISTING WATER METER
- EXISTING WATER VALVE
- EXISTING WATER LINE
- EXISTING REINFORCED CONCRETE PIPE 18" RCP
- EXISTING CORRUGATED METAL PIPE 24" CMP

LEGEND - NEW IMPROVEMENTS

- BUILDING
- CONCRETE CURB AND GUTTER
- PARKING SPACES
- ADA RAMP
- HEAVY DUTY ASPHALT OR CONCRETE
- STANDARD DUTY PAVEMENT
- SITE LIGHTING POLES
- FIRE HYDRANT
- WATER VALVE
- DOWN SPOUT
- DIRECTIONAL ARROWS
- FLUME
- GARAGES
- SIDEWALK
- DECORATIVE FENCE
- CHAINLINK FENCE
- COMMUNICATIONS BOX
- ELECTRIC BOX
- TREE TO REMAIN

OVERALL  
SITE PLAN



REVISION	BY

**DDG**  
DUPLANTIS DESIGN GROUP, PC  
CIVIL ENGINEERING - ARCHITECTURE  
34 LOUIS PRIMA DRIVE COVINGTON, LA 70433  
WWW.DDGPC.COM PHONE: 985-249-6860 || FAX: 985-249-6190  
THIBODAUX | COVINGTON | HOUSTON | BATON ROUGE | HOUMA

PROGRESS SET - FOR REVIEW ONLY  
Issued 07/08/14  
These documents are for Design Review and not intended for construction. Spikes or on the plans for the issuance of a permit. They were prepared by, or under the supervision of, Douglas E. Barillieux, P.E., 434541 Duplantis Design Group, PC

SPRINGS AT FREMAUX TOWN CENTER  
SLIDELL, LOUISIANA  
ST. TAMMANY PARISH  
FOR CONTINENTAL 294 FUND LLC  
MEMONEE FALLS, WI

DRAWN DGS
CHECKED DEB
ISSUED DATE 8/23/14
ISSUED FOR PERMITTING
PROJECT NO. 14-248
FILE 14-248 C-3 SITE
SHEET C-3.0