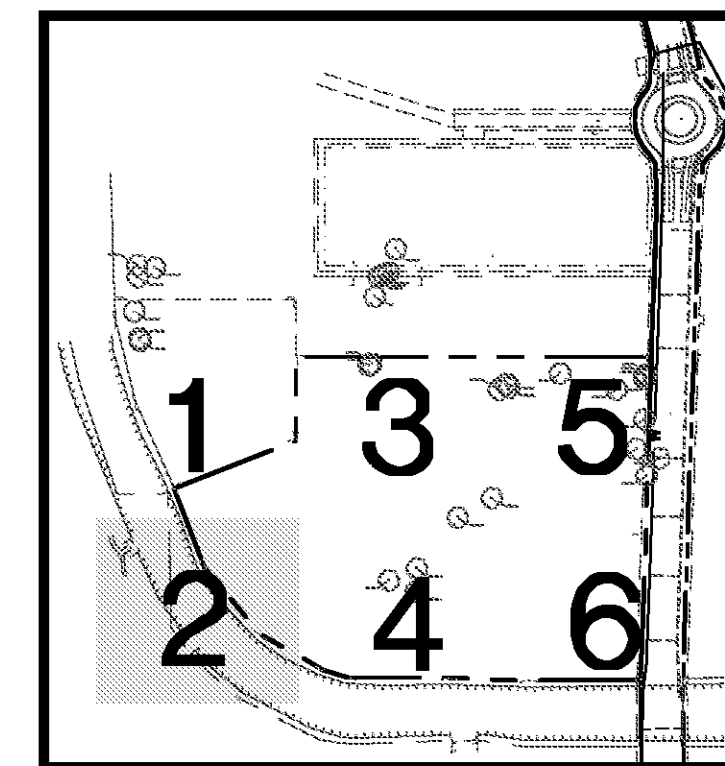
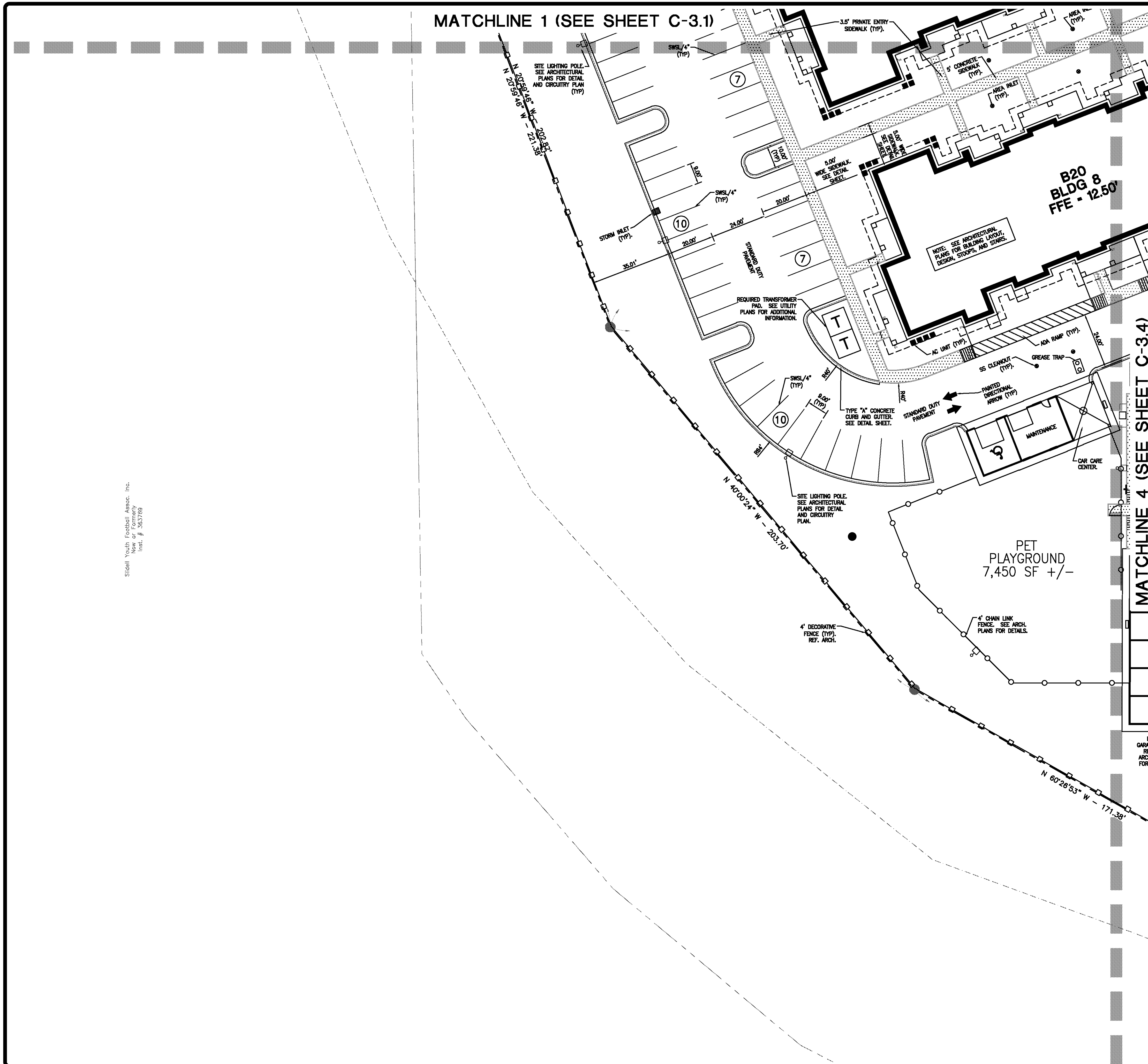


MATCHLINE 1 (SEE SHEET C-3.1)



KEY MAP
N.T.S.

LEGEND - STRIPING

- SWSL/4" - SINGLE WHITE SOLID LINE / 4" WIDE
- DYSL/4" - DOUBLE YELLOW SOLID LINE / 4" WIDE EACH
- YSL/4" - SINGLE YELLOW SOLID LINE / 4" WIDE
- SWDL/4" - SINGLE WHITE DASHED LINE / 4" WIDE
- SBSL/4" - SINGLE BLUE SOLID LINE / 4" WIDE
- SWSL/24" - SINGLE WHITE SOLID LINE / 24" WIDE
- SWSL/8" - SINGLE WHITE SOLID LINE / 8" WIDE

EXISTING LEGEND

- FOUND PROPERTY CORNER (AS NOTED)
- SET 3/4" IRON ROD
- EXISTING POWER POLE
- EXISTING POWER POLE WITH LIGHT
- EXISTING PARKING LOT LIGHT
- EXISTING GUY ANCHOR
- EXISTING TELEPHONE PEDESTAL
- EXISTING OVERHEAD POWER LINE
- EXISTING GAS METER
- EXISTING GAS VALVE
- EXISTING BARB WIRE FENCE LINE
- EXISTING WIRE MESH FENCE LINE
- EXISTING HIGH DENSITY POLYETHYLENE PIPE
- EXISTING PIPE BOLLARD
- EXISTING MAILBOX
- ELEVATION OF TOP OF STRUCTURE
- ELEVATION OF BOTTOM OF STRUCTURE
- EXISTING SPOT ELEVATION
- ELEVATION OF TOP OF CURB
- ELEVATION OF FACE OF CURB
- EXISTING SEWER MANHOLE
- EXISTING SEWER CLEANOUT
- EXISTING DRAINAGE MANHOLE
- EXISTING SUBSURFACE DRAINAGE
- EXISTING CATCH BASIN/DROP INLET
- EXISTING FIRE HYDRANT
- EXISTING WATER METER
- EXISTING WATER VALVE
- EXISTING WATER LINE
- EXISTING REINFORCED CONCRETE PIPE
- EXISTING CORRUGATED METAL PIPE

NOTE:

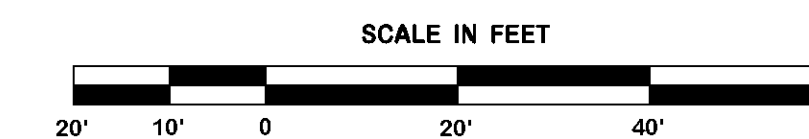
1. SEE SHEETS C-3.0 FOR OVERALL SITE PLAN.
2. SEE SHEETS C-4.0-C-4.8 FOR GRADING PLANS.
3. SEE SHEETS C-5.1-C-5.2 FOR UTILITY PLANS.
4. SEE SHEETS C-8.1-C-8.2 FOR EROSION CONTROL PLANS.
5. SEE SHEETS C-1 FOR GENERAL NOTES.
6. SEE SHEETS D-1-D-6 FOR DETAILS.
7. SEE SHEETS C-2 FOR BUILDING DIMENSIONAL CONTROL PLAN.



LEGEND - NEW IMPROVEMENTS

- BUILDING
- CONCRETE CURB AND GUTTER
- PARKING SPACES
- ADA RAMP
- HEAVY DUTY ASPHALT OR CONCRETE
- STANDARD DUTY PAVEMENT
- SITE LIGHTING POLES
- FIRE HYDRANT
- WATER VALVE
- DOWN SPOUT
- DIRECTIONAL ARROWS
- FLUME
- GARAGES
- SIDEWALK
- DECORATIVE FENCE
- CHAINLINK FENCE
- COMMUNICATIONS BOX
- ELECTRIC BOX
- TREE TO REMAIN

SITE PLAN
SECTION 2



REVISION	BY

DDG
 DUPLOUNTIS DESIGN GROUP, PC
 CIVIL ENGINEERING - ARCHITECTURE
 34 LOUIS PRIMA DRIVE COVINGTON, LA 70433
 WWW.DDGPC.COM PHONE: 985-249-6860 || FAX: 985-249-6190
 THIBODAUX | COVINGTON | HOUSTON | BATON ROUGE | LOUISIANA

PROGRESS SET - FOR REVIEW ONLY
 Issued 07/08/14
 These documents are for Design Review and not intended for construction. Spikes or on the plans for the issuance of a permit. They were prepared by, or under the supervision of, Douglas E. Barillieux, P.E., #334541 Duplontis Design Group, PC

SPRINGS AT FREMAUX TOWN CENTER
 SLIDELL, LOUISIANA
 ST. TAMMANY PARISH
 FOR CONTINENTAL 294 FUND LLC
 MEMONONIE FALLS, WI

DRAWN DGS
 CHECKED DEB
 ISSUED DATE 8/23/14
 ISSUED FOR PERMITTING
 PROJECT NO. 14-248
 FILE 14-248 C-3 SITE
 SHEET C-3.2

Slidell Youth Football Assoc., Inc.
 Now at formerly
 track # 565760