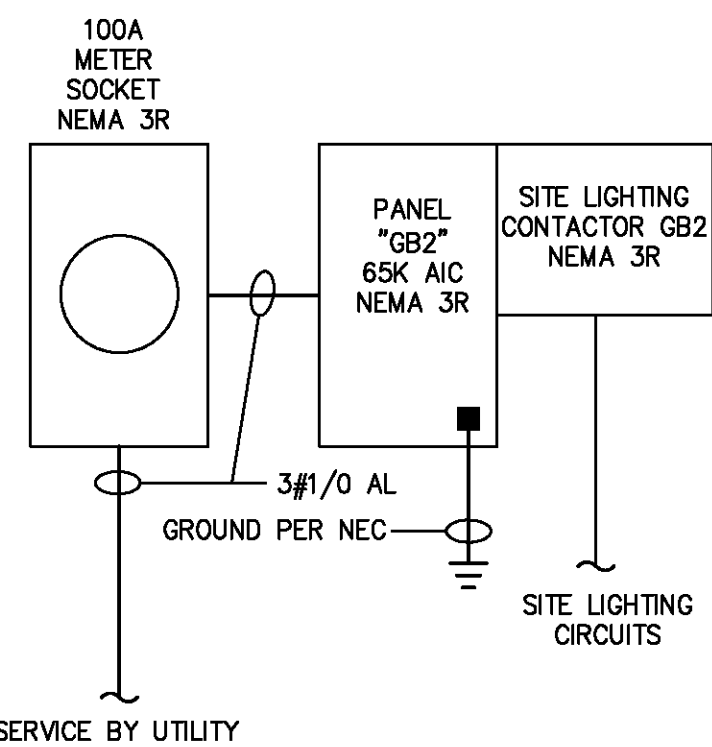
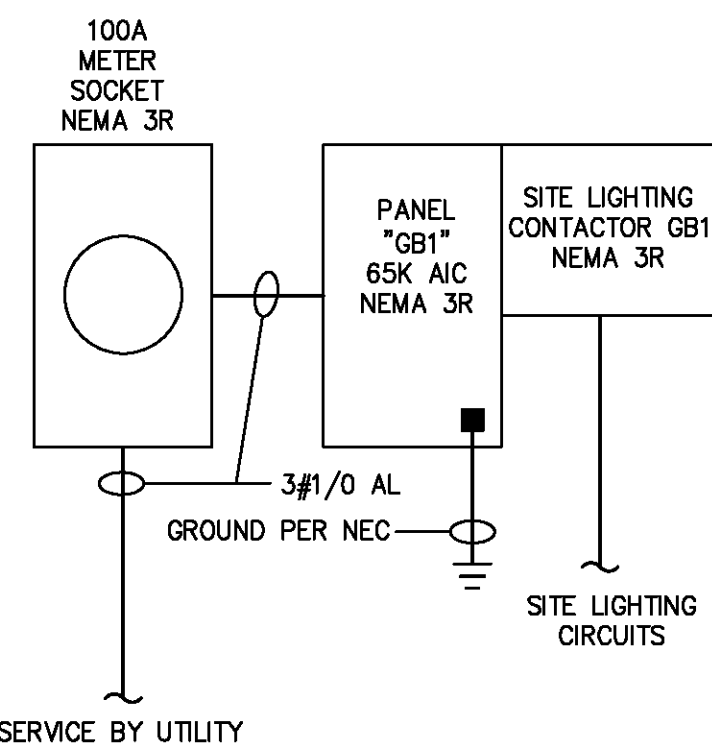


PANELBOARD	GB1	NEMA ENCLOSURE	3R	AIC RATING	65,000						
PANEL TYPE	QO	MOUNTING SURFACE		NOTES	TOP FEED						
MAIN BREAKER	VOLTAGE 240/120V MAINS 100A MCB		PHASE 1 WIRE 3	PNL MAX AMPS 125A	OPTIONS						
CCT NO.	LOAD DESCRIPTION	BKR SIZE	BKR OPT	ACTUAL KW	PHASE	ACTUAL KW	BKR OPT	BKR SIZE	LOAD DESCRIPTION	CCT NO.	
1	G01 GARAGE LTG / DOOR	20/1		0.690	A	0.690		20/1	G04 GARAGE LTG / DOOR	2	
3	G02 GARAGE LTG / DOOR	20/1		0.690	B	0.690		20/1	G05 GARAGE LTG / DOOR	4	
5	G03 GARAGE LTG / DOOR	20/1		0.690	A	0.690		20/1	G06 GARAGE LTG / DOOR	6	
7	SPACE	20/1		0.000	B	0.000		20/1	SPACE	8	
9	SITE LIGHTING	20/2		0.500	A	0.100		20/2	BUILDING LTG	10	
11	SPACE			0.500	B	0.100			SPACE	12	
13	SPACE			0.000	A	0.000			SPACE	14	
15	SPACE			0.000	B	0.000			SPACE	16	
17	SPACE			0.000	A	0.000			SPACE	18	
19	SPACE			0.000	B	0.000			SPACE	20	
21	SPACE			0.000	A	0.000			SPACE	22	
23	SPACE			0.000	B	0.100		20/1	LIGHTING CONTACTOR GB1	24	
ACTUAL CONNECTED				PHASE A							
3.360 KW				PHASE B						23 AMPS	
2.080 KW				TOTAL							
5.440 KW											

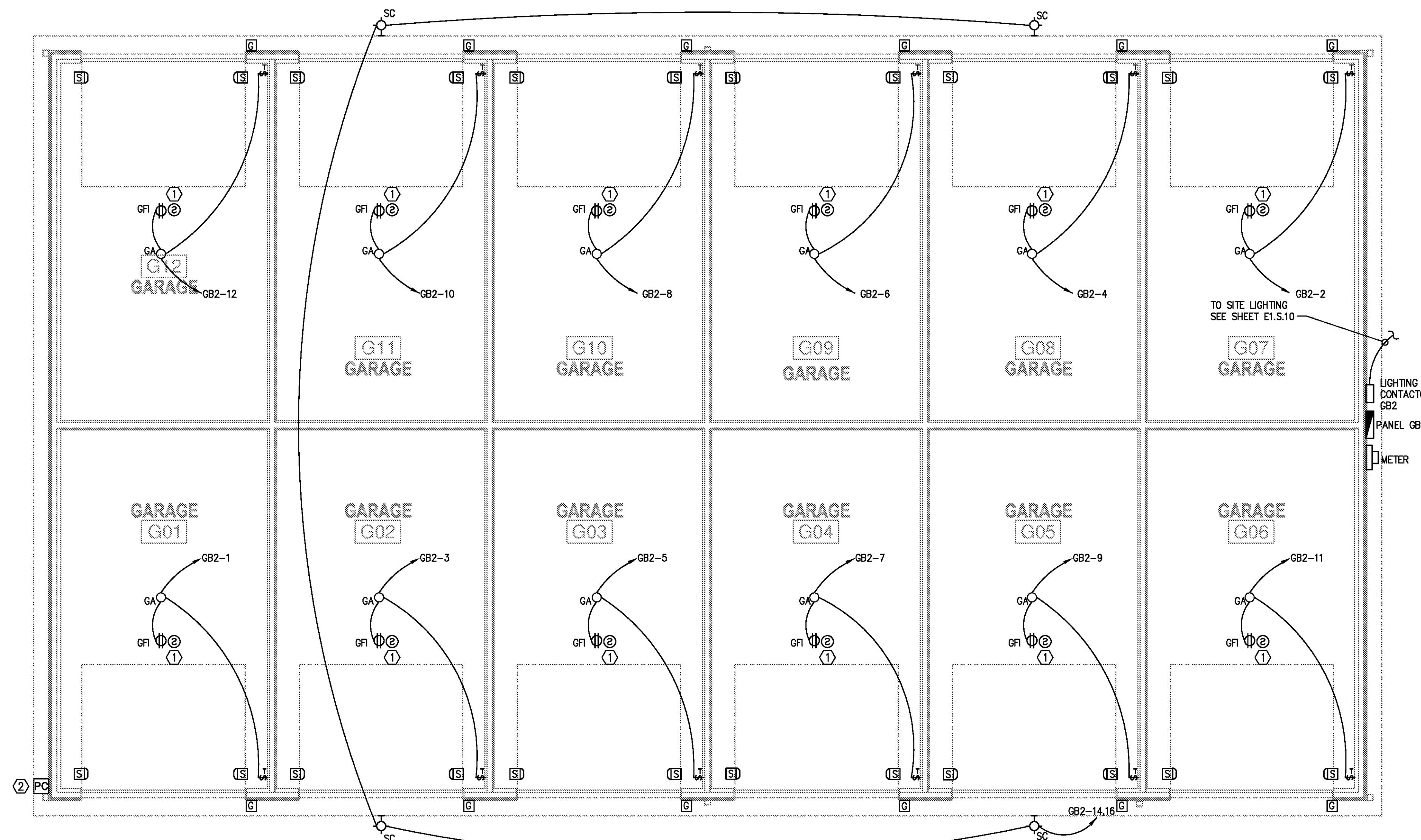
PANELBOARD	GB2	NEMA ENCLOSURE	3R	AIC RATING	65,000						
PANEL TYPE	QO	MOUNTING SURFACE		NOTES	TOP FEED						
MAIN BREAKER	VOLTAGE 240/120V MAINS 100A MCB		PHASE 1 WIRE 3	PNL MAX AMPS 125A	OPTIONS						
CCT NO.	LOAD DESCRIPTION	BKR SIZE	BKR OPT	ACTUAL KW	PHASE	ACTUAL KW	BKR OPT	BKR SIZE	LOAD DESCRIPTION	CCT NO.	
1	G01 GARAGE LTG / DOOR	20/1		0.690	A	0.690		20/1	G07 GARAGE LTG / DOOR	2	
3	G02 GARAGE LTG / DOOR	20/1		0.690	B	0.690		20/1	G08 GARAGE LTG / DOOR	4	
5	G03 GARAGE LTG / DOOR	20/1		0.690	A	0.690		20/1	G09 GARAGE LTG / DOOR	6	
7	G04 GARAGE LTG / DOOR	20/1		0.690	A	0.690		20/1	G10 GARAGE LTG / DOOR	8	
9	G05 GARAGE LTG / DOOR	20/1		0.690	B	0.690		20/1	G11 GARAGE LTG / DOOR	10	
11	G06 GARAGE LTG / DOOR	20/1		0.690	A	0.690		20/1	G12 GARAGE LTG / DOOR	12	
13	SPACE			0.300	A	0.200			SPACE	14	
15	SITE LTG	20/2		0.300	B	0.200		20/2	BUILDING LTG	16	
17	SPACE			0.500	A	0.360		20/1	MAIL KIOSK RECEIPT	18	
19	SITE LTG	20/2		0.500	B	0.600		20/1	MAIL KIOSK LTG	20	
21	SPACE			0.000	A	0.000		20/1	SPACE	22	
23	SPACE			0.000	B	0.100		20/1	LIGHTING CONTACTOR GB2	24	
ACTUAL CONNECTED				PHASE A							
5.500 KW				PHASE B						47 AMPS	
5.840 KW				TOTAL							
11.340 KW											



4 ELECTRICAL RISER DIAGRAM - 12 BAY GARAGE BLDG
E2.G.10 SCALE: NOT TO SCALE

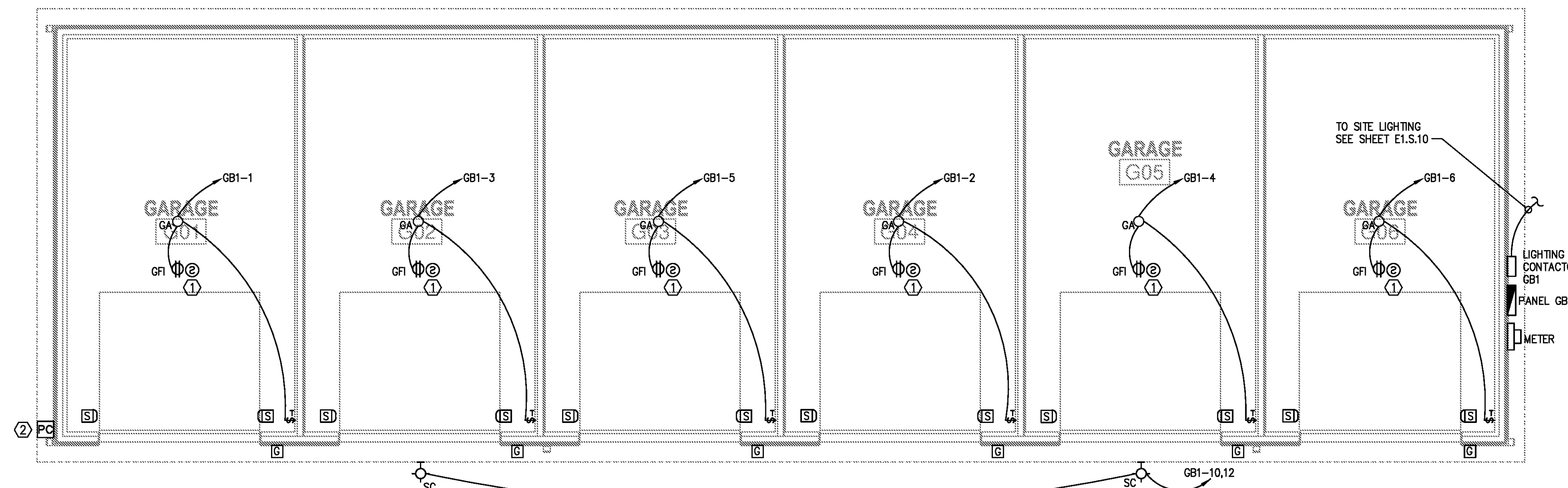


3 ELECTRICAL RISER DIAGRAM - 6 BAY GARAGE BLDG (TYP)
E2.G.10 SCALE: NOT TO SCALE

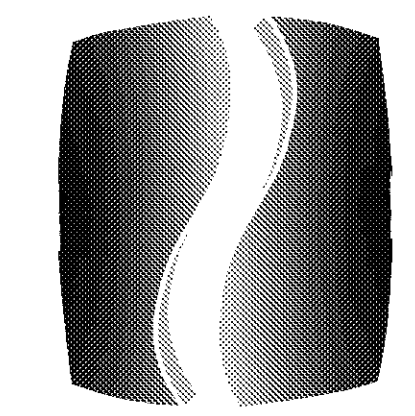


ELECTRICAL KEYED NOTES:

- PROVIDE SMOKE DETECTORS IN GARAGES ONLY AS REQUIRED BY LOCAL FIRE MARSHALL OR AUTHORITY HAVING JURISDICTION (TYP FOR ALL).
- LOCATE PHOTO CELL ON NORTH FACE OF BUILDING, AIM NORTH.



1 6 BAY GARAGE BUILDING (TYPICAL)
E2.G.10 SCALE: 1/4" = 1'-0"



PHILLIPS

Phone 770.394.1616 Fax 770.394.1314

CONSULTANT



PHILLIPS NORTH TERRACES
400 PERIMETER CENTER TERRACE
SUITE 650
ATLANTA, GA 30346

SEAL

ISSUE & REVISION RECORD

#	DATE	DESCRIPTION
	07/07/14	BID SET

This document is the property of Phillips Partnership, PC and is intended for use only for the project and site indicated below. All rights reserved. This document may not be reproduced without the prior written consent of Phillips Partnership, PC.

PROJECT

SPRINGS AT FREMAUX TOWN CENTER
SLIDELL, LA

CLIENT

CONTINENTAL PROPERTIES
CONTINENTAL 294 FUND LLC
W134 N8875 EXECUTIVE PARKWAY
MENOMONEE FALLS, WI 53061
262.502.5500 * FAX 262.502.5522

PHILLIPS JOB NUMBER 1333104

ISSUE DATE 07/07/14

DRAWN BY/CHECKED BY JDP

DRAWING TITLE GARAGE BUILDING ELECTRICAL PLANS

SHEET NUMBER

E2.G.10

NORTH TERRACES
400 PERIMETER CENTER TERRACE
SUITE 650
ATLANTA, GEORGIA 30346