

PHILLIPS

Phone 770.394.1616 Fax 770.394.1314

CONSULTANT



PHILLIPS
NORTH TERRACES
400 PERIMETER CENTER TERRACE
SUITE 650
ATLANTA, GA 30346

SEAL

ISSUE & REVISION RECORD

#	DATE	DESCRIPTION
	07/07/14	BID SET

This document is the property of Phillips Partnership, PC and is intended as a contract document and is not to be used for any other project or in any other form. All rights reserved. This document may not be reproduced without the prior written consent of Phillips Partnership, PC.

PROJECT

SPRINGS AT FREMAUX TOWN CENTER
SLIDELL, LA

CLIENT

CONTINENTAL PROPERTIES
CONTINENTAL 294 FUND LLC
W134 N6675 EXECUTIVE PARKWAY
MENOMONEE FALLS, WI 53051
262.502.5500 • FAX 262.502.5522

PHILLIPS JOB NUMBER 1333104

ISSUE DATE 07/07/14

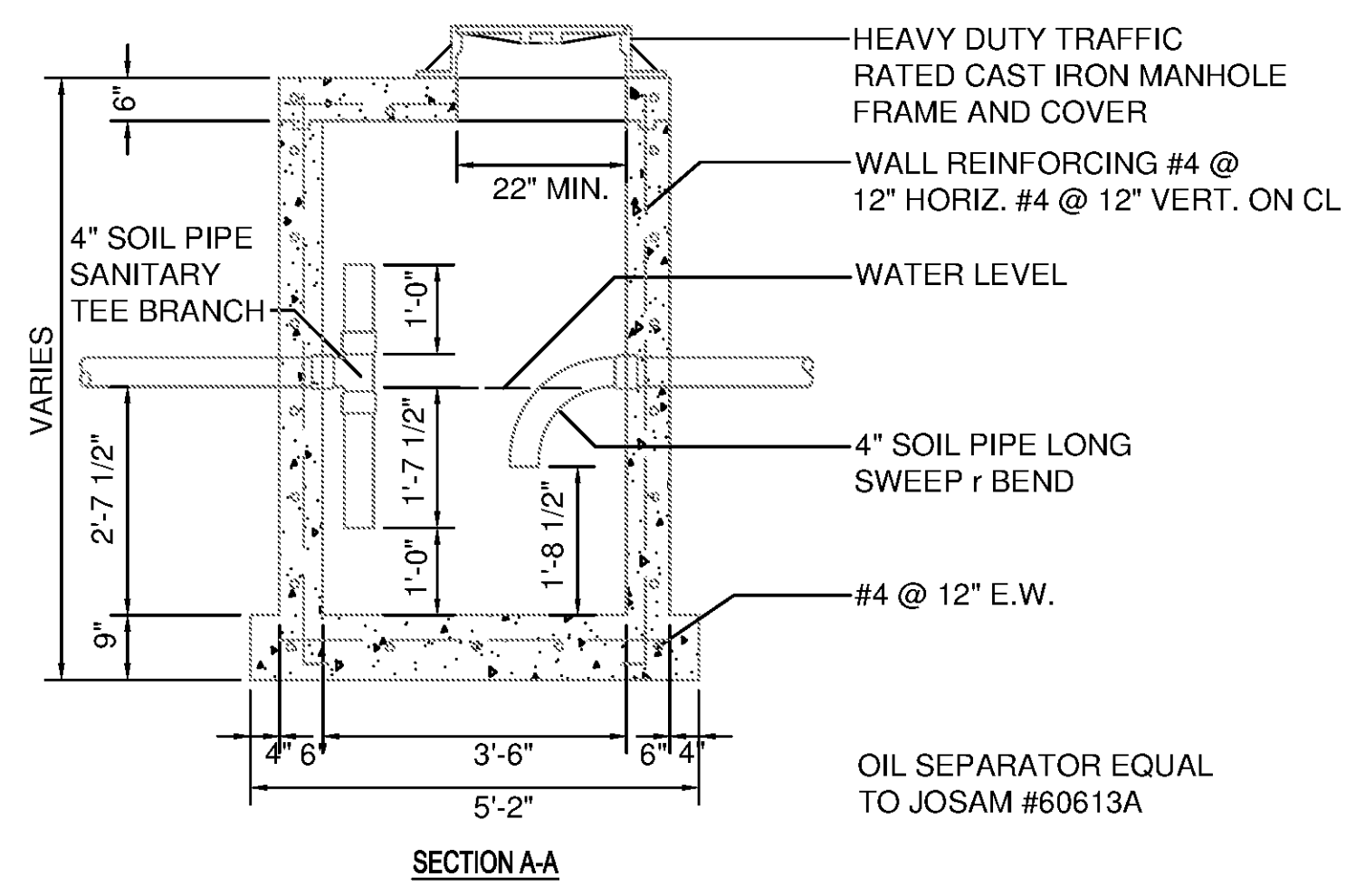
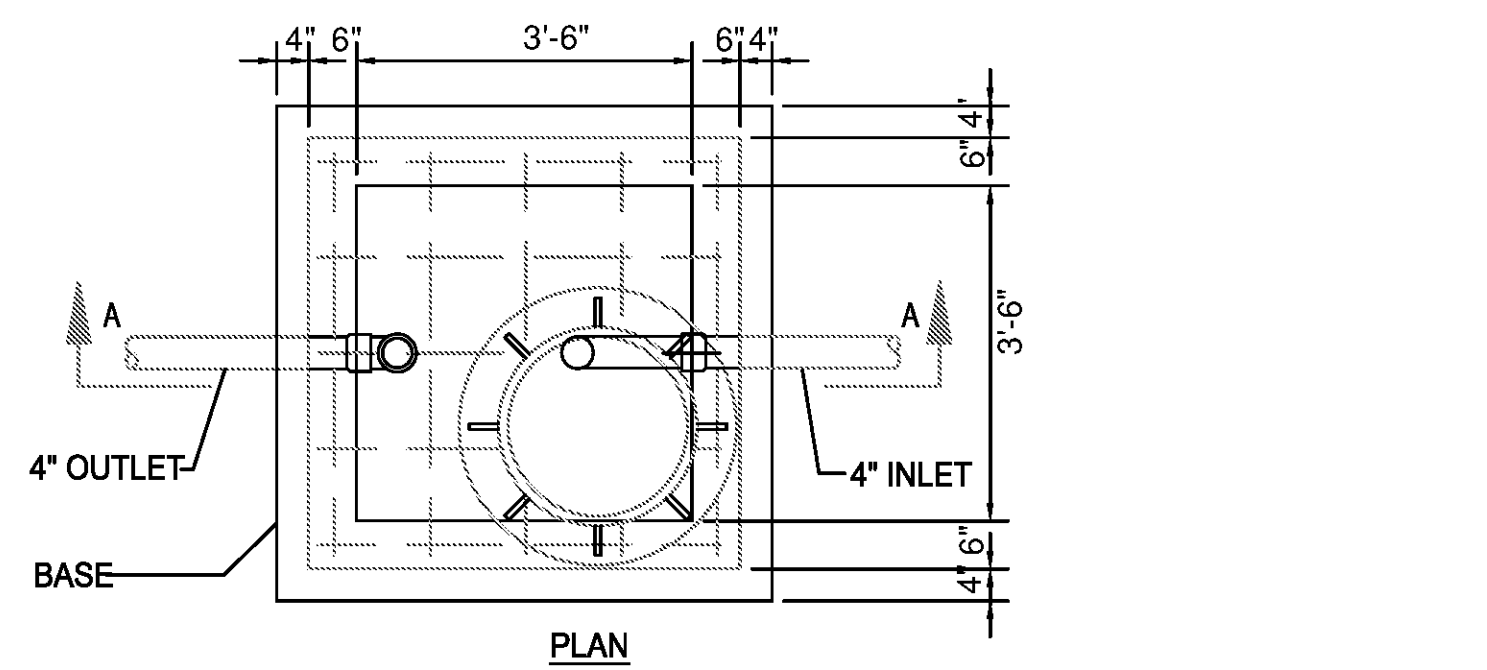
DRAWN BY/CHECKED BY JCC

DRAWING TITLE GARAGE, MAINTENANCE

SHEET NUMBER

P1.G.11

NORTH TERRACES
400 PERIMETER CENTER TERRACE
SUITE 650
ATLANTA, GEORGIA 30346



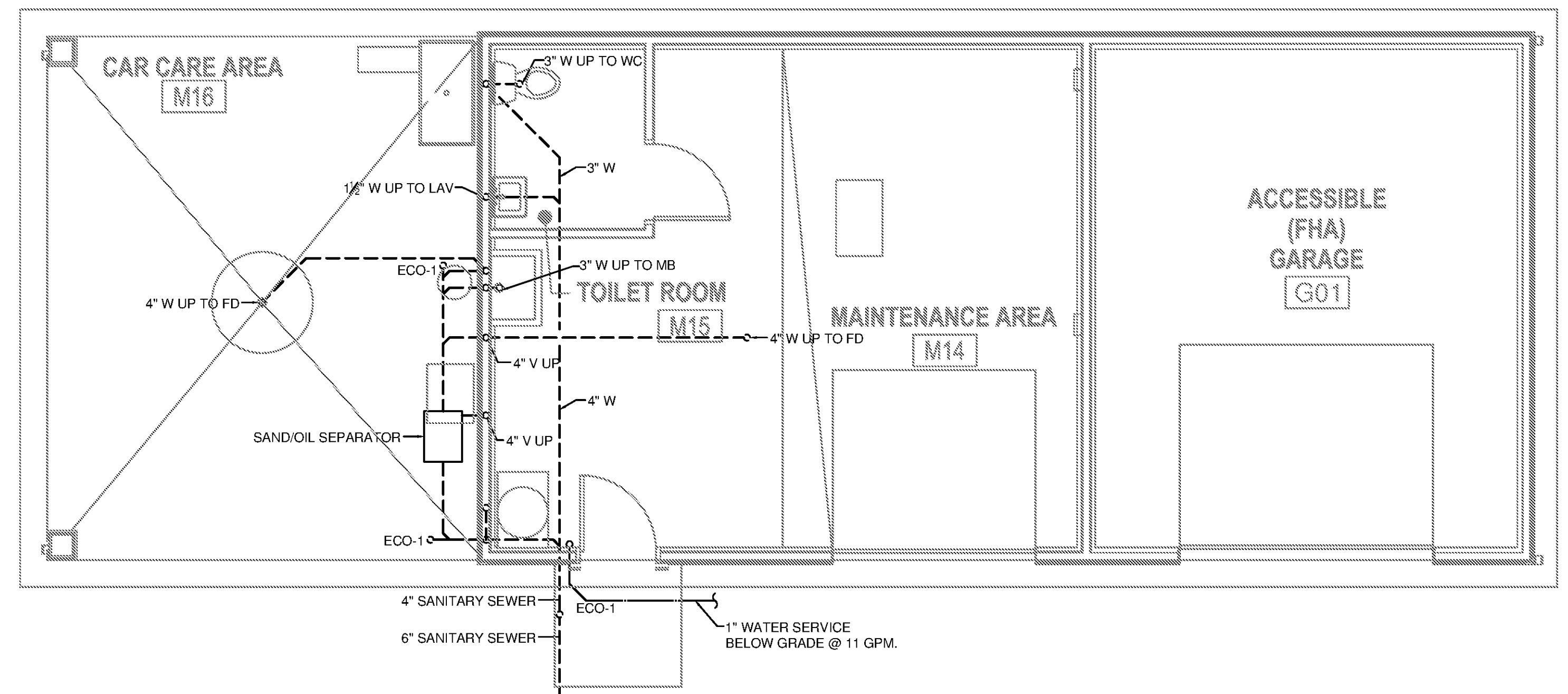
3 OIL SEPARATOR
P1.G.11 SCALE: NO SCALE

PLUMBING FIXTURE SCHEDULE						
MARK	DESCRIPTION	WASTE	VENT	CW	HW	DESCRIPTION
WC-3	WATER CLOSET (CLUBHOUSE)	3"	1/2"	1/2"	-	RIM +14" FIXTURE: AMERICAN STANDARD CADET 3 FLOWISE, 1.28 GALLONS PER FLUSHING CYCLE, VITREOUS CHINA BOWL, SIPHON ACTION, WALL OUTLET WITH BOLT CAPS, ELONGATED BOWL SEAT; CHURCH #9500-SSC, OPEN FRONT SEAT WITH CHECK HINGE, NO COVER.
L-1	LAVATORY (UNITS ONLY)	1/2"	1/2"	1/2"	1/2"	SELF RIMMING FIXTURE: AMERICAN STANDARD LUCERNE # 0355.012 WHITE, 4" FAUCET CENTERS, COUNTERTOP TYPE, FRONT OVERFLOW, SELF RIMMING. DIMENSIONS: 15" x 12-1/8" x 5-3/4" FAUCET: CFG CA41211 2H, LEVER HANDLES, 1.5 GPM MAX AERATOR, POP-UP DRAIN. PROVIDE BRASS ANGLE VALVES STOPS, SUPPLIES AND PVC 1/2" P-TRAP.
WH-1	WALL HYDRANT	-	-	1/2"	-	OUTLET -24" PROVIDE WADE W1103-G4, FREEZELESS, WALL HYDRANT WITH VACUUM BREAKER AND ATMOSPHERIC VENT, 1/2" HOSE THREAD OUTLET SPOUT, ALL BRASS. SEE PLANS FOR LOCATIONS. TEE KEY OPERATED.
PW	PET WASH	-	-	1/2"	-	

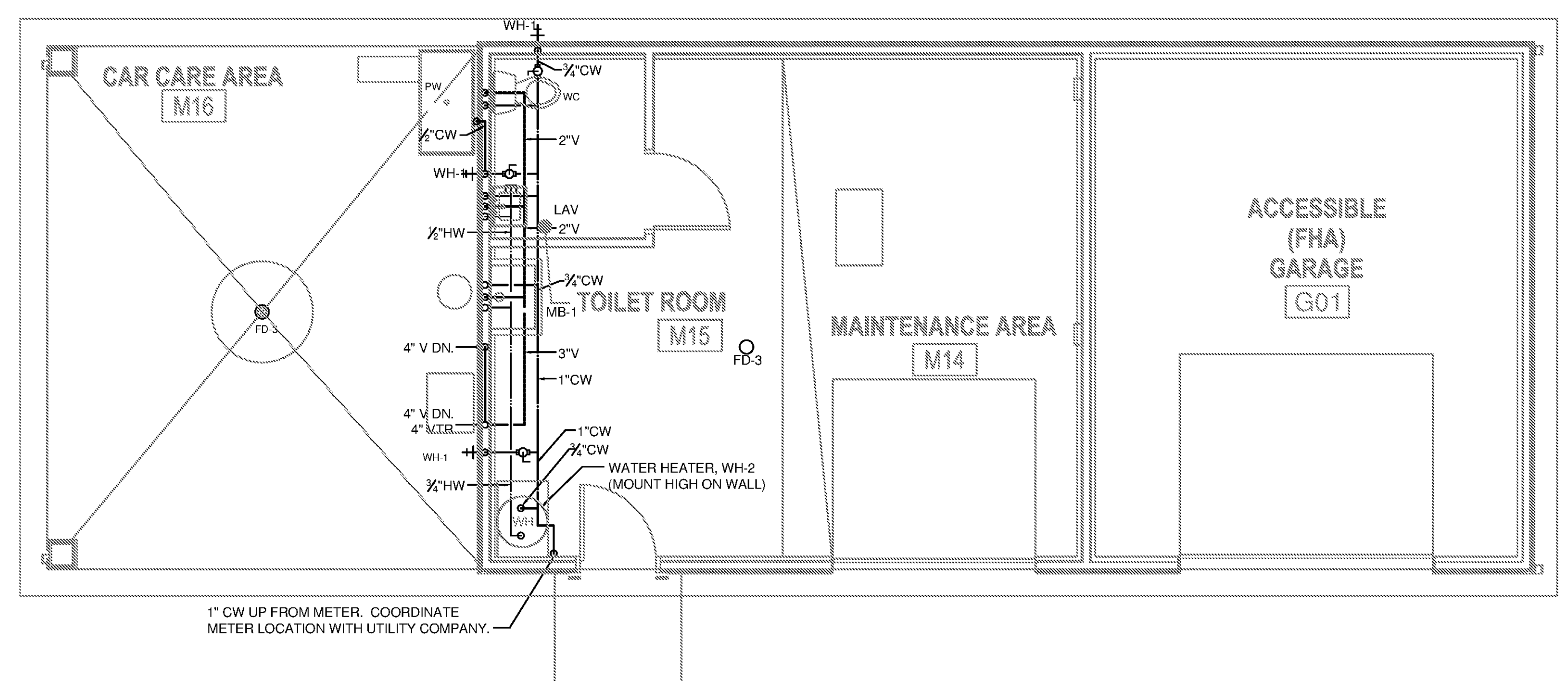
NOTES:
1. INSTALL FIXTURES IN ACCORDANCE WITH ADA/FHA REQUIREMENTS WHERE REQUIRED.

ELECTRIC WATER HEATER SCHEDULE											
MARK	MANUFACTURER	MODEL NO.	ELECTRIC RATING				GALLON STORAGE	TEMP. RISE	RECOVERY	OPERATING WEIGHT (LBS)	NOTES
			TOTAL KW	# ELEMENTS	VOLT	PH					
WH-2	AO SMITH	ECL-30	4.5	2 @ 4.5	240	1Ø	30	90° F	21 GPH	91	1, 2, 3, 4, 5, 6

NOTES:
1. ENERGY EFFICIENCY RATING OF 0.93; DIMENSION: 22" Ø X 30" HIGH.
2. HEATER ELEMENTS ARE WIRED FOR NON-SIMULTANEOUS OPERATION.
3. SEE DETAILS FOR ADDITIONAL INFORMATION.
4. WHEN WATER HEATER IS PROVIDED WITH HEAT TRAP NIPPLES THEN HEAT TRAP IN WATER HEATER DETAIL IS NOT REQUIRED BY IECC.
5. PROVIDE AND INSTALL EXPANSION TANK ETC-2X BY STATE INDUSTRIES OR EQUAL.
6. WATER HEATERS TO BE PROVIDED WITH ENERGY SAVING WATER HEATER TIMERS. MODEL ASAP A-1 AND PREPROGRAMMED ENERGY SAVING WATER HEATER TIMER.



1 MAINTENANCE BUILDING SANITARY/VENT FLOOR PLAN
P1.G.11 SCALE: 1/4"=1'-0"



2 GARAGE BUILDING (TYPICAL) DOMESTIC WATER FLOOR PLAN
P1.G.11 SCALE: 1/4"=1'-0"