

Request for Information



Project:

Location:

Date:

RFI #:

Subject:

To:

From:

Action Required:

Applicable Drawings/Specifications:

Date Required:

Cost Impact:

Schedule Impact:

Question:

Response Date:

Response By:

Response:



PHILLIPS

Phone 770.394.1616 Fax 770.394.1314

CONSULTANT

SEAL

ISSUE & REVISION RECORD

#	DATE	DESCRIPTION
	07/07/14	BID SET

This document is © Phillips Partnership, PC and is considered an Instrument of Service and is solely for use with respect to the project as indicated below. All rights reserved. This document may not be reproduced without the prior written consent of Phillips Partnership, PC.

PROJECT

SPRINGS AT FREMAUX TOWN CENTER
SLIDELL, LA

CLIENT

CONTINENTAL PROPERTIES
CONTINENTAL 294 FUND LLC
W134 NB675 EXECUTIVE PARKWAY
MENOMONEE FALLS, WI 53051
262.502.5500 * FAX 262.502.5522

PHILLIPS JOB NUMBER 1333104

ISSUE DATE 07/07/14

DRAWN BY / CHECKED BY ATU/DEB

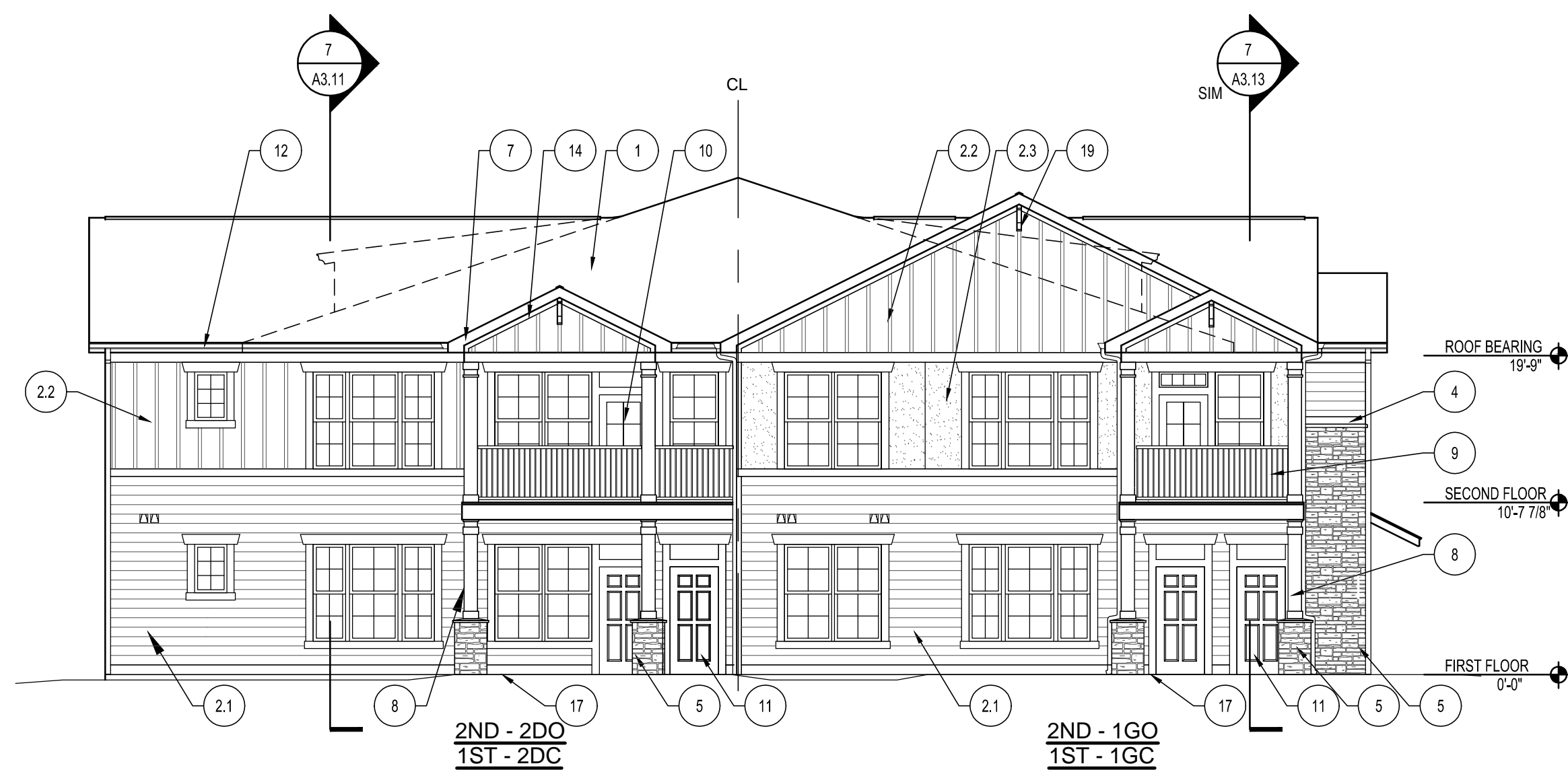
DRAWING TITLE

EXTERIOR ELEVATIONS - BUILDING TYPE B20

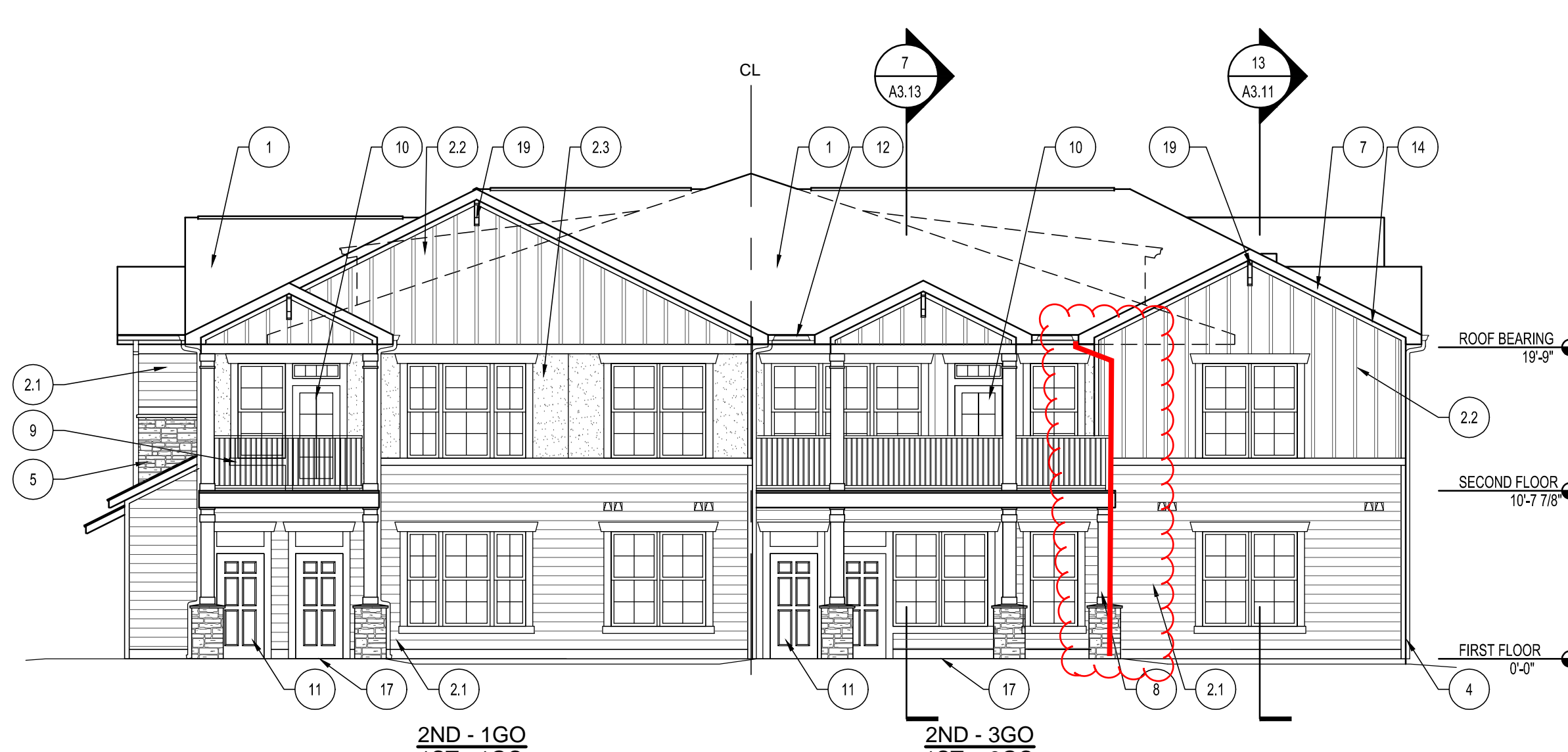
SHEET NUMBER

A2.A.1

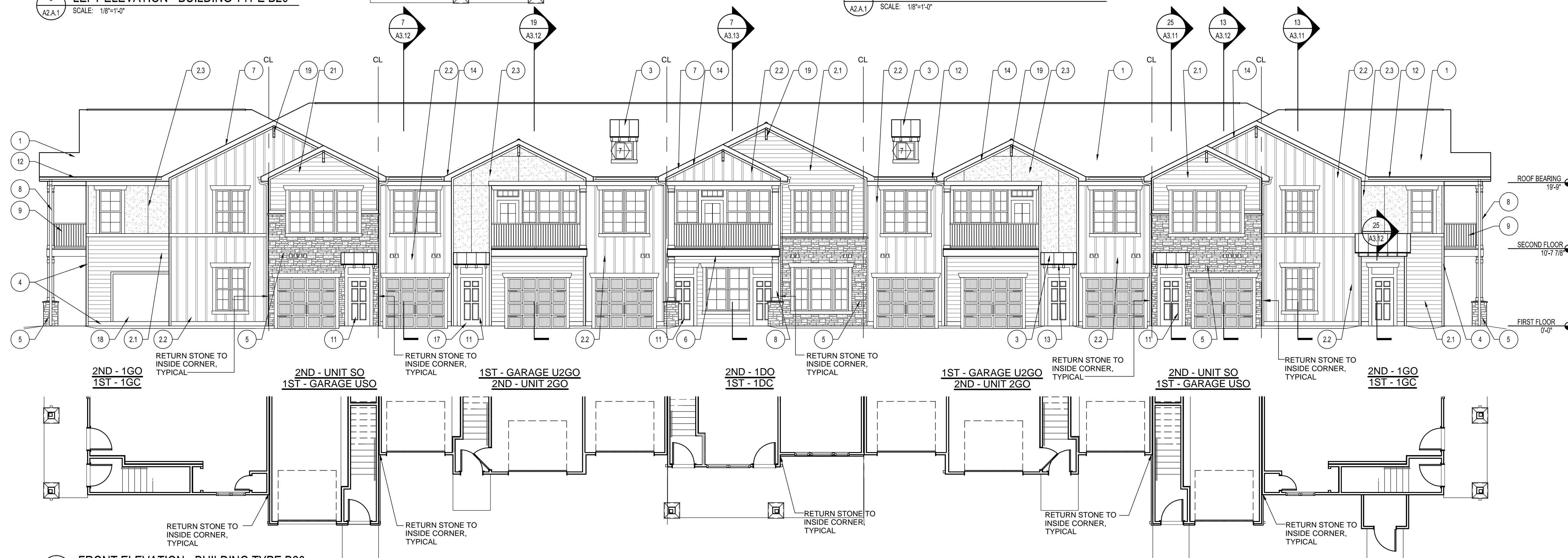
NORTH TERRACES
400 PERIMETER CENTER TERRACE
SUITE 650
ATLANTA, GEORGIA 30346



3 LEFT ELEVATION - BUILDING TYPE B20
SCALE: 1/8"=1'-0"



2 RIGHT ELEVATION - BUILDING TYPE B20
SCALE: 1/8"=1'-0"



1 FRONT ELEVATION - BUILDING TYPE B20
SCALE: 1/8"=1'-0"

LEGEND

XX	WINDOW TYPE - SEE SHEET A6.02
⌈	DRYER/BATHROOM EXHAUST VENT - SEE SHEET A5.26 FOR DETAILS. COLOR TO MATCH ADJACENT MATERIAL
X	KEYED NOTES - SEE THIS SHEET FOR MORE INFORMATION

GENERAL NOTES:

- PROVIDE DRIP CAPS AT ALL WINDOW AND DOOR HEADS.
- REFER TO FLOOR PLANS & SCHEDULES FOR DOOR AND WINDOW SIZES AND LOCATION.
- PROVIDE FLASHING AS REQUIRED TO PREVENT THE PENETRATION OF WATER THROUGH THE EXTERIOR SHELL OF THE BUILDING.
- MAINTAIN OPENING IN ROOF SHEATHING AT OVERFRAMING TO PROVIDE VENTILATION.
- SEE GENERAL NOTES ON WALL SECTION SHEETS AND DETAIL SHEETS FOR MORE INFORMATION.

KEYED NOTES:

- 30 YR CLASS B ARCHITECTURAL GRADE SELF-SEALING ASPHALT SHINGLES, TAMKO HERITAGE SERIES, COLOR WEATHERED WOOD ON 15# FELT ON 7/16" OSB ROOF SHEATHING W/ METAL "H" CLIPS ON TRUSSES AT 24" O.C. (PROVIDE UPLIFT CONNECTORS AT EACH END OF EACH TRUSS - SEE STRUCTURAL).
- 2.1 SIDING 1: HORIZONTAL SIDING: HARDIPANEL SELECT CEDAR/MILL O.C. 2.25" W/ 7" EXPOSURE (WOOD GRAIN). INSTALLED W/ FLASHING @ BUTT JOINTS PER MANUFACTURER RECOMMENDATIONS. COLOR: PRE-FIN. HEATHERED MOSS OR PPG PAINT #410-4 OLIVE SPRING.
- 2.2 SIDING 2: BOARD AND BATTEN: HARDIPANEL (SMOOTH) W/ VERTICAL HARDIPANEL BATTENS (SMOOTH) AT 16" OC. COORDINATE PANEL SEAMS WITH BATTEN LOCATIONS. COLOR: PRE-FIN. MOUNTAIN SAGE OR PPG PAINT #410-7 PINETOP.
- 2.3 SIDING 3: HARDIPANEL "STUCCO" W/ "H" CLIPS AT SEAMS. SEE ELEVATIONS FOR SEAM LOCATIONS. COLOR: PRE-FIN. MONTEREY TAUPE OR PPG PAINT #515-5 STONEHENGE GREIGE

- STANDING SEAM ROOF SYSTEM ON 15LB. FELT OVER ROOF SHEATHING ON PRE-ENGINEERED WOOD TRUSSES WITH CEDAR RAFTER TAILS AND TRIM. SEE NOTE 13.
- 4 HARDITRIM (SMOOTH) - AT FRIEZE, RAKE, WINDOWS, DOORS, AND CORNER BOARDS. PRE-FINISHED COLOR: TIMBER BARK (OR APPROVED EQUAL). INSTALLED PER MANUFACTURER'S RECOMMENDATIONS. PRE-FINISHED METAL FLASHING WHERE REQUIRED.
- 5 MANUFACTURED STONE VENEER. CORONADO, TEXAS RUBBLE CT117 OR APPROVED EQUAL. INSTALL PER MANUFACTURER'S RECOMMENDATIONS.
- 6 FIBER CEMENT FASCIA AT BALCONY EDGE. PRE-FINISHED COLOR: TIMBER BARK (OR APPROVED EQUAL)
- 7 PRE-FINISHED METAL DRIP EDGE OVER 2x8 FASCIA BOARD WRAPPED IN ALUMINUM. COLOR: BROWN.
- 8 HARDIPANEL (SMOOTH) CLAD COLUMN WRAP AND TRIM - COLUMN W/ SQUARE CAP AND BASE OVER 6x6 TREATED POST. PRE-FINISHED COLOR: TIMBER BARK (OR APPROVED EQUAL). INSTALLED PER MFR. RECOMMENDATIONS.

- 9 PATIO/BALCONY GUARDRAIL - PRE-FINISHED VINYL GUARDRAIL ASSEMBLY. STYLE AND COLOR TO MATCH TIMBER BARK. TOP OF RAIL AT 43" AFF.
- 10 PREFINISHED INSULATED PATIO DOOR W/ GLASS LITES. STYLE AND COLOR AS SELECTED BY OWNER.
- 11 PREFINISHED INSULATED DOOR. STYLE AS SELECTED BY OWNER. COLOR TO MATCH TIMBER BARK.
- 12 PREFINISHED ALUMINUM 5" GUTTER AND 3"x4" DOWNSPOUT. STYLE: K. COLOR: BRONZE. TIE DOWNSPOUT IN TO STORM SYSTEM.
- 13 ENTRY CEILINGS AT 3" CEDAR RAFTERS TO BE EXPOSED. PAINT GRADE PLYWOOD, PAINT PLYWOOD AND RAFTERS TO MATCH TRIM (TIMBER BARK OR APPROVED EQUAL). COORDINATE SEAMS WITH RAFTERS.
- 14 VENTED VINYL SOFFIT: CERTAINTED (OR APP. EQ.) STYLE: UNIVERSAL TRIPLE. COLOR: BROWN.

- 15 METAL INSULATED OVERHEAD DOOR W/ TRACK, WEATHER STRIPPING & AUTO OPENER ASSEMBLY. COLOR AS SELECTED BY OWNER.
- 16 EXTERIOR DECORATIVE ENTRY DOOR LIGHT PROGRESS LIGHTING MODEL #P5881-31WB.
- 17 ENTRY STOOPS AND PATIO: BROOM FINISH CONCRETE. SEALED.
- 18 AREA FOR MOUNTING OF UTILITY EQUIPMENT. MATCH COLOR OF ADJACENT LAP SIDING. EQUIPMENT TO BE PAINTED TO MATCH ADJACENT BASE MATERIAL. COORDINATE ELECTRICAL, TELEPHONE, AND CABLE BOX LOCATIONS ON BUILDING IN FIELD W/ UTILITY LOCATIONS. REFER TO MOUNTING DETAILS ON SHEET A5.26.
- 19 FYPON DECORATIVE BRACKET - BRACKET MODEL BK11X20. OR ARCHITECT APPROVED EQUAL. SEE DETAIL 15A5.24. COLOR TO MATCH FASCIA

