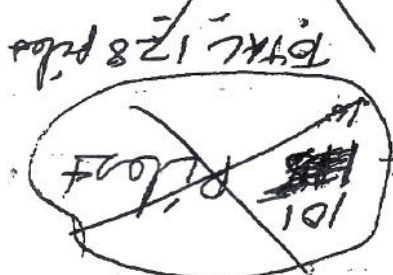


302 TRNS  
 132,550 gal x 8.35 lb/gal = 1,109,375 lb  
 = 553 tons  
 SO water 553 tons  
 Concrete 260 tons  
 813 tons  
 USING 8 TON PILES=101  
 + 1 row of Benzamide  
 75' long  
 8' x 1 = 8' / rows 12 rows  
 8' x 8 = 64'  
 45' = 6.42 FT  
 8 PILES 75 FT LONG  
 101 PILES = 52.6 / rows 50 x 13  
 12 rows @ 8'



40' - 8 feet  
 Small numbers 6" top & 8" butt

Main Pool 132,500 gal  
 Kubbie Pool 7,500 gal

Driver  
 into

Check  
 Keep these cables  
 Southern Pool

①

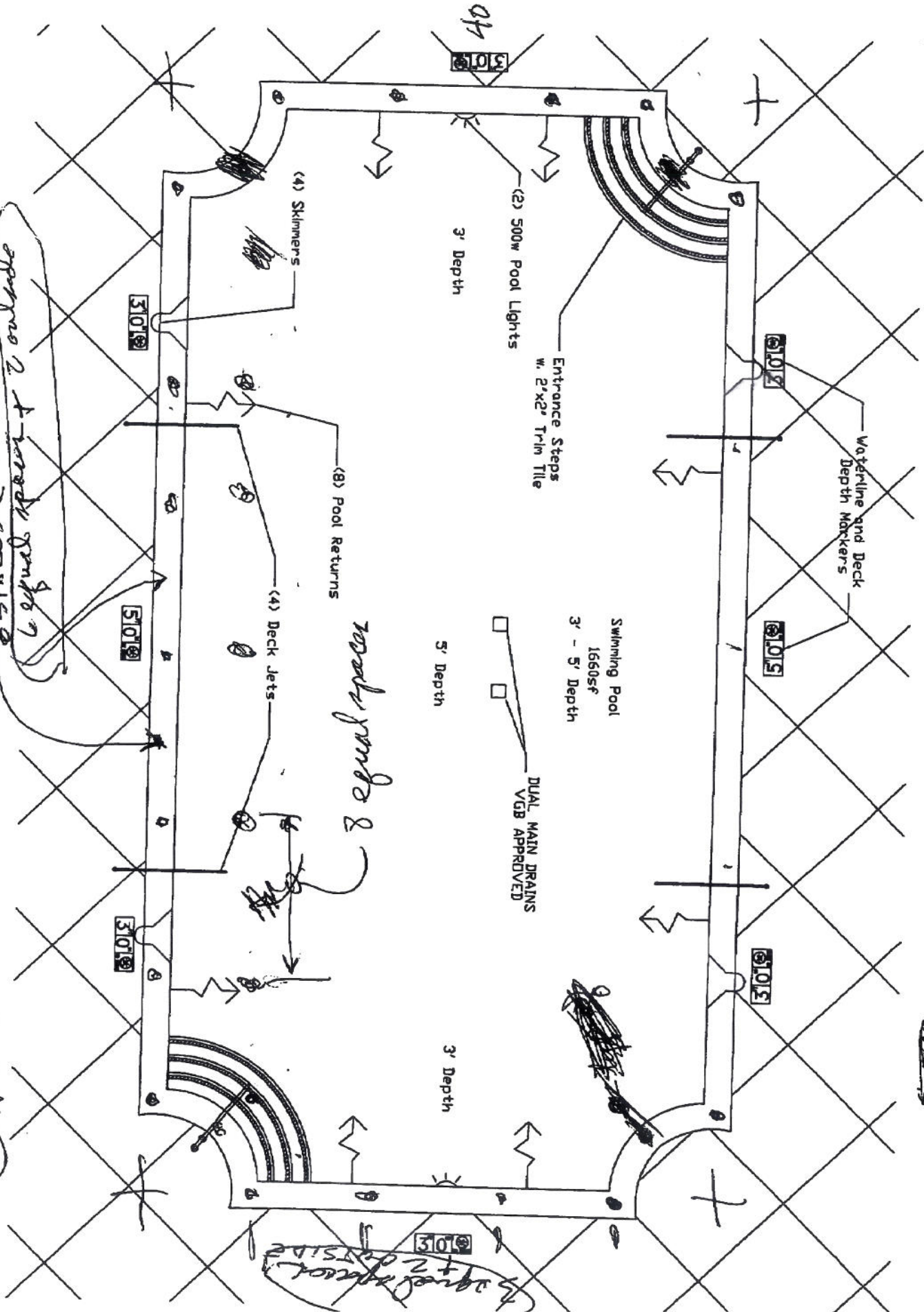
CHUCK

OUTSIDE ROWS ONLY  
6 SPACES @ 7'

6 equal spaces + 2 outside

5 equal spaces + 2 outside

8 equal spaces

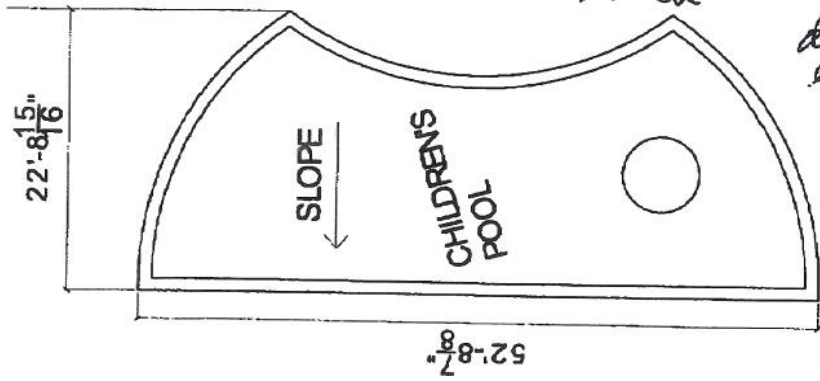


Since they didn't give measurements 55' on the curves, I assumed they measured ~~the~~ 1/2 - 2' on the

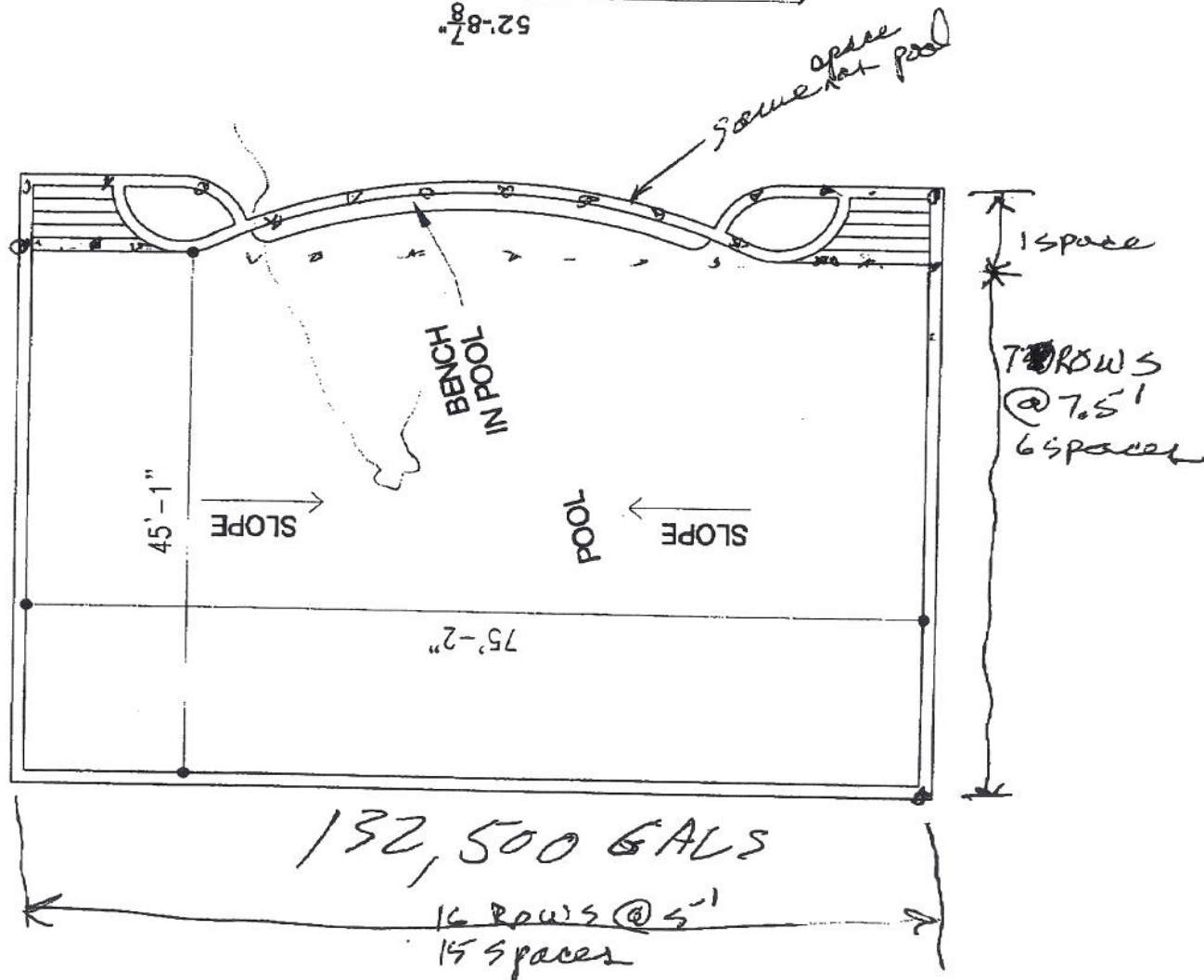
# Southern Jacket



Pile case 2 top ea  
 5 small timbers 6" tip, 8" Butt  
 driven to 40' below  
 exist surface.



45-1



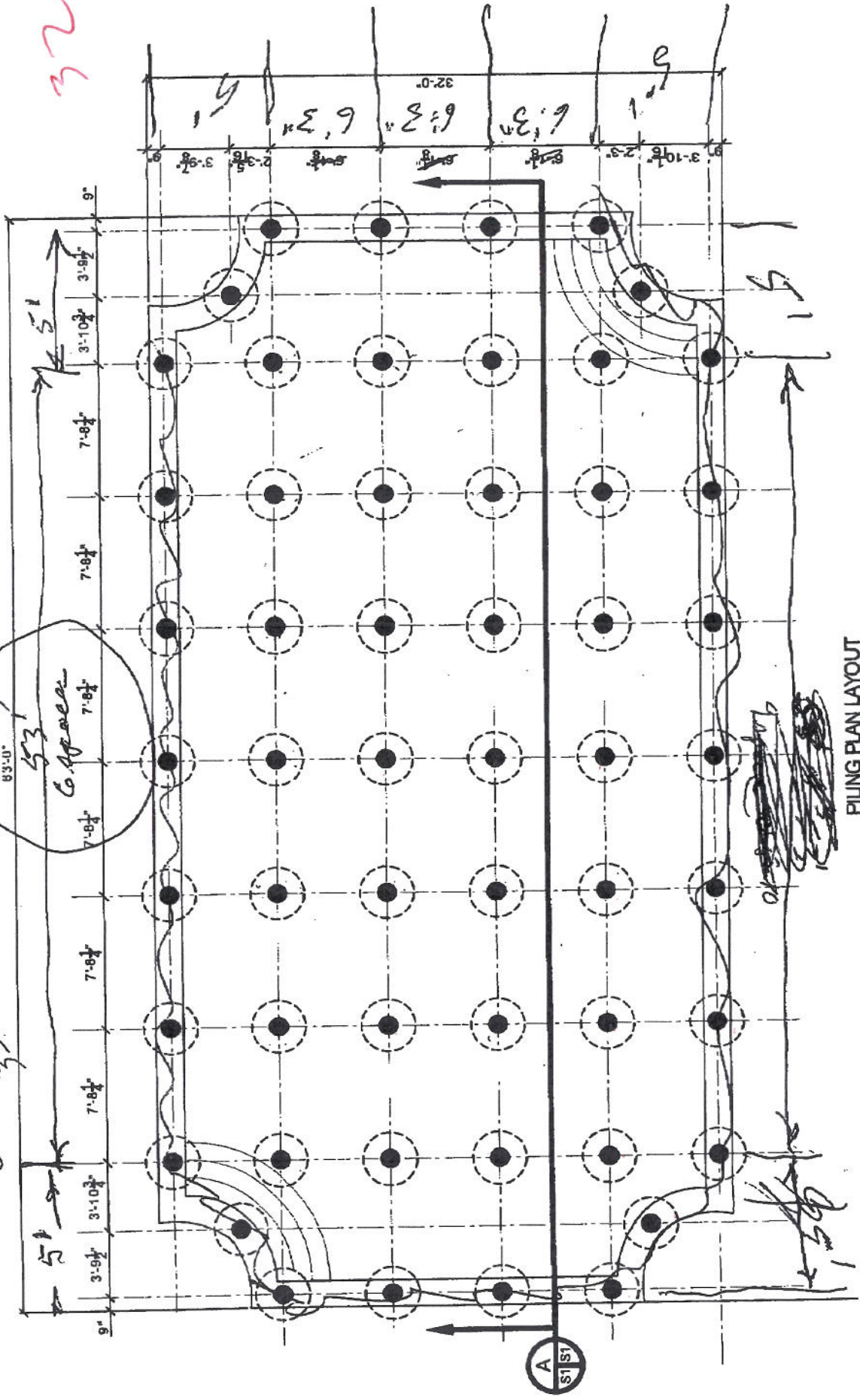
112 piles main area + bench area total  $\approx 128$

8 Ton Pile  
 30 ft deep below start  
 surface

189 Tons  
 150 Tons  
 39 Tons

$\frac{340}{13} = 26.15$  piles  
 45,500 gal  
 29

83'-0"  
 53'  
 C. Agave



PILING PLAN LAYOUT  
 SCALE 1/4" = 1'-0"

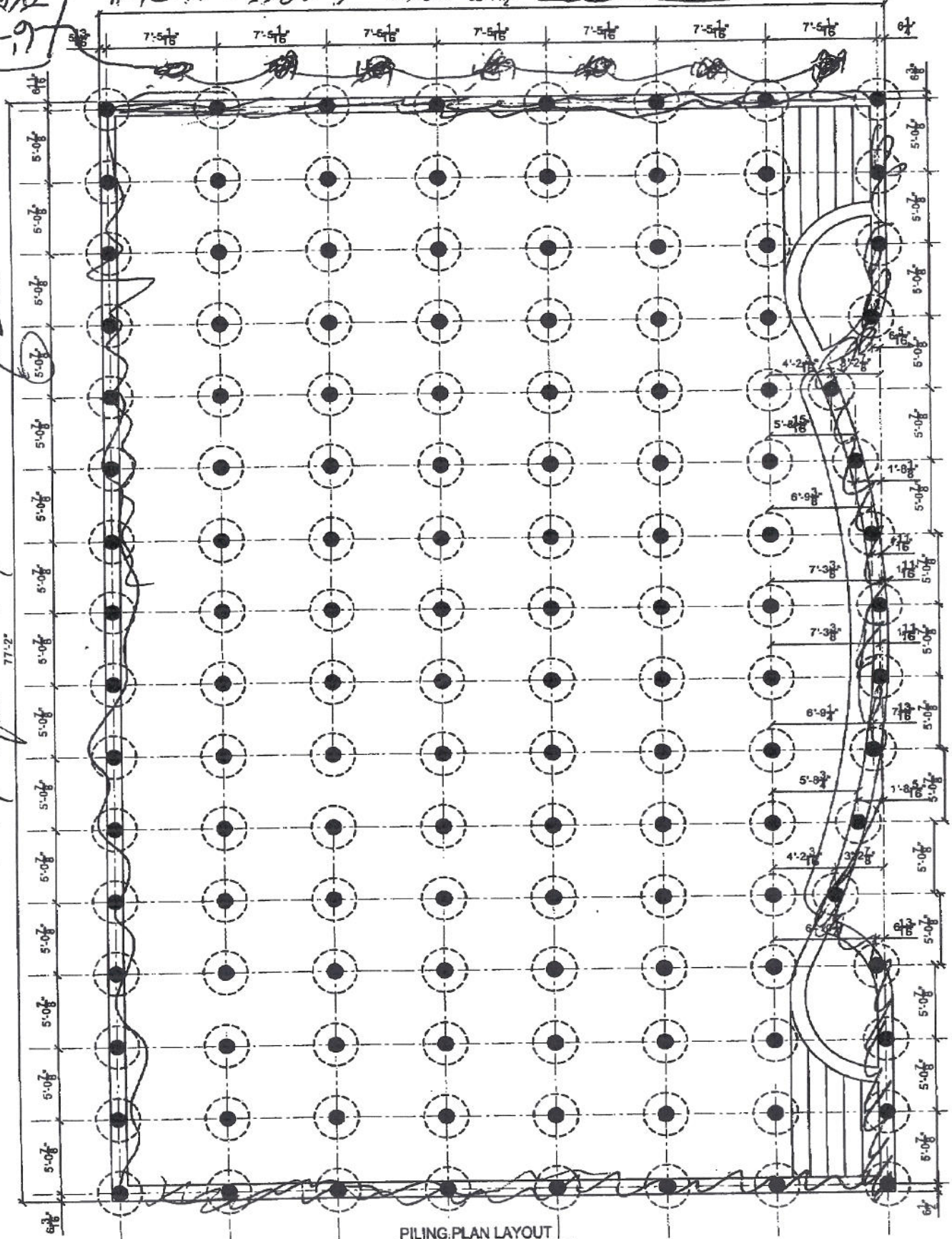
Cherry Piles to  
 use heat treated lumber  
 7' tip 12" Brett 15 tons

2.9  
 1  
 2.9

S. Yacht 132,500 coal  
 This spacing OK

6'-7 1/2" TYP

52-11 1/2" 53' 1/8" for 25' = 6' 7 1/2" (9 x 14 = 98 piles)



PILING PLAN LAYOUT  
 SCALE: 1/4" = 1'-0"

5m timber pile seaward