

LARGE EXTENDED 2" RETURN FITTING WITH GASKET/NUT FOR VINYL OR STEEL







FEATURES

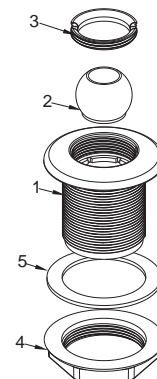
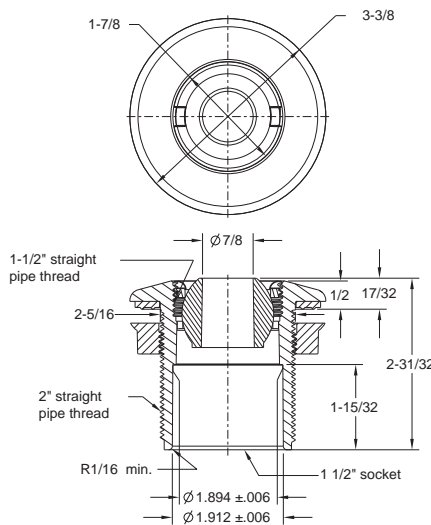
- Fits 2" thread or 1½" slip
- 1½" thread in front face
- Extended wall fitting allows for variations in fiberglass depths
- Includes gasket and locking nut for vinyl, fiberglass or steel installations
- Includes removable eyeball and nut
- Manufactured from UV-resistant ABS material
- 25 per case



Part # 1020Fxxx

STANDARD COLORS

- | | | | |
|---|-----|---|-----|
|  | 101 |  | 104 |
|  | 102 |  | 105 |
|  | 103 |  | 108 |



1. Body, fiberglass wall fitting
2. Eye ball, fiberglass wall fitting
3. Ring, locking, fiberglass wall fitting
4. Nut, fiberglass wall fitting
5. Gasket, fiberglass wall fitting

ANGLE WALL ADAPTER FOR FIBERGLASS (SET OF TWO)

FEATURES

Installs between a fiberglass pool's sidewall and return fitting to change the water direction angle







For use with 1020TSxxx 2" return fitting

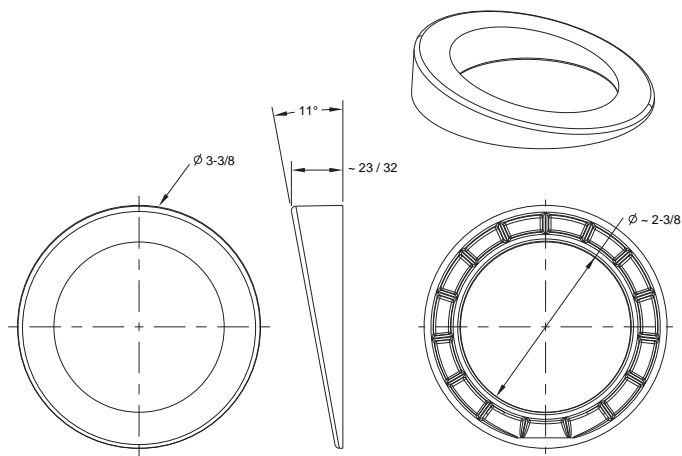
200 per case



Part # AWAxXX

STANDARD COLORS

	101		104
	102		105
	103		108

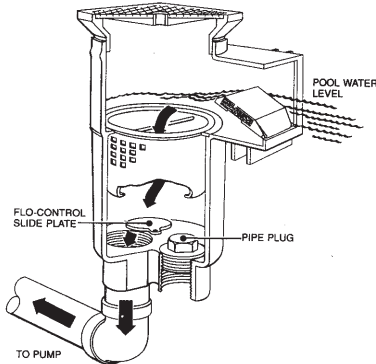




HAYWARD MODEL SP1084 AUTO-SKIM AUTOMATIC SURFACE SKIMMER

INSTALLATION AND OPERATING INSTRUCTIONS

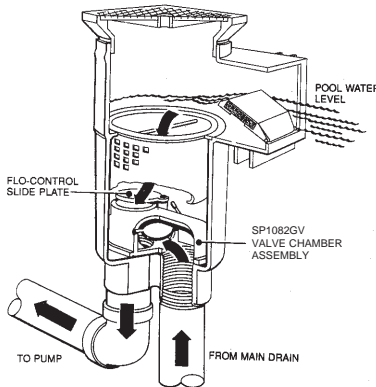
The Auto-Skim is a rugged, versatile automatic skimmer for residential or commercial installations. The illustrations below show the standard SP1084 (#1); the SP1082GV Skimmer-Main Drain Valve Assembly installed (#2); and the SP1084 with SP1078 Equalizer Valve and SP1082FV Float Valve Assembly (#3). Consult inside pages for specific installation details and dimensions.



1. BASIC UNIT

A. FLOW ADJUSTMENT—For full flow, move Flo-Control Slide Plate to full open. To adjust flow, move Slide Plate to desired position over pump outlet.

B. TO VACUUM—Remove cover and basket. Screw hose adapter into pump outlet. Fill vacuum hose with water and insert over hose adapter. Or use optional Skim-Vac over basket vacuum plate.



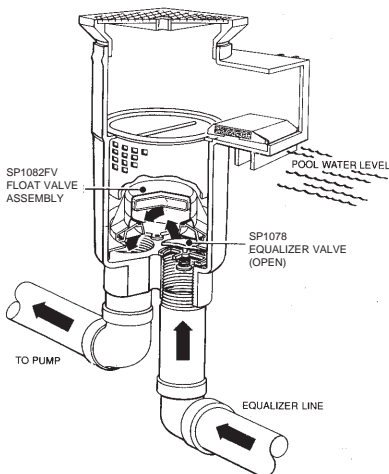
2. SKIMMER WITH MAIN DRAIN CONNECTION

A. FULL SKIM—Place Valve Lever in straight-up position. Open Slide Plate.

B. FULL MAIN DRAIN (SWEEP)—Place Valve Lever down. Close Slide Plate.

C. 1/2 SKIM - 1/2 MAIN DRAIN—Place Valve Lever at 45° (half-down). Open Slide Plate 1/2.

D. TO VACUUM—Remove cover and basket. Place Valve Lever straight up. Fill vacuum hose with water, and insert into opening in Valve Chamber. Or use optional Skim-Vac over basket vacuum plate.



3. SP1084FVE—SKIMMER WITH EQUALIZER VALVE AND FLOAT VALVE ASSEMBLY

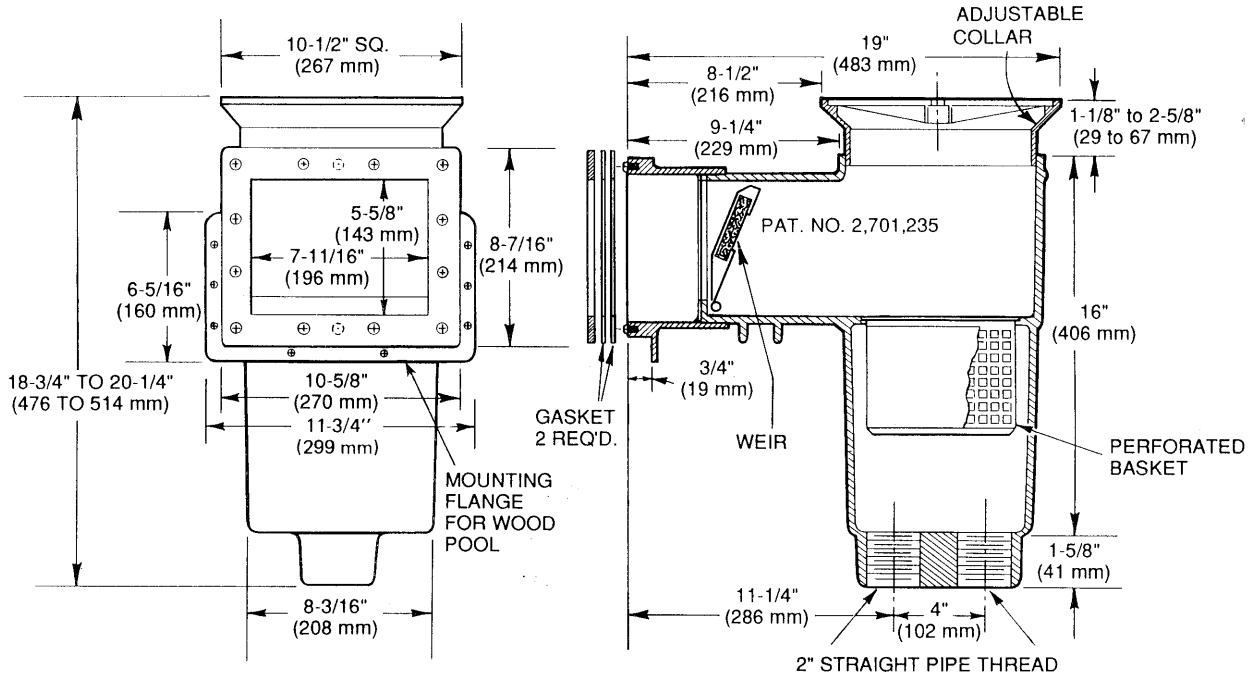
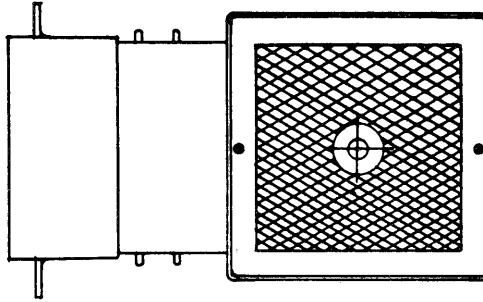
A. EQUALIZER—Model SP1078 Equalizer Check Valve Assembly installs over front port, and is used in conjunction with the SP1082FV Float Valve Assembly. If water level drops below skimmer opening, or if skimmer flow is obstructed, the float will automatically snap shut and the equalizer valve will open. This diverts all flow to the pump from the equalizer line and prevents airlock in the pump. When the pump is shut off, and the water level condition is corrected, the float will rise and the equalizer valve will close, allowing normal skimming operation when the pump is restarted.

B. TO VACUUM—Select one convenient skimmer and remove cover, basket and float valve assembly. Screw hose adapter into pump outlet. Fill vacuum hose with water and insert over hose adapter. Throttle down flow from other skimmer(s) until desired suction is obtained through vacuum.



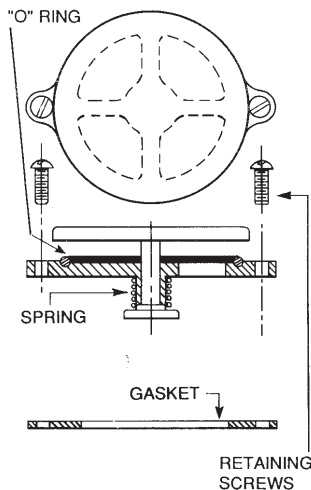
NOTE: When two or more skimmers are plumbed into a common suction line, the flow is balanced through the skimmers by adjusting the Flo-Control Slide Plate at each unit.

SP1084
AUTO-SKIM
DIMENSIONS



INSTALLATION INSTRUCTIONS

**EQUALIZER VALVE ASSEMBLY
SP1078**



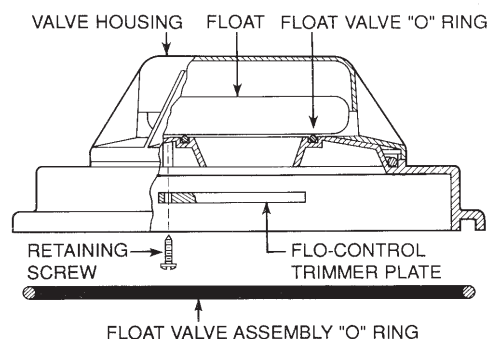
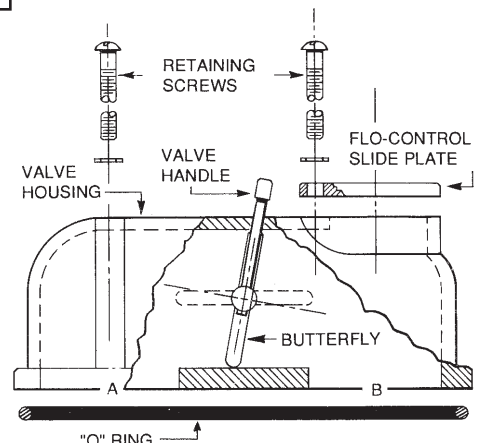
1. Place gasket over equalizer line port. Line up gasket over holes in body.
2. Place Equalizer Assembly over equalizer port, solid side up.
3. Insert retaining screws thru ear tabs and gasket and tighten retaining screws.

**SKIM/MAIN DRAIN VALVE ASSEMBLY
SP1082GV**

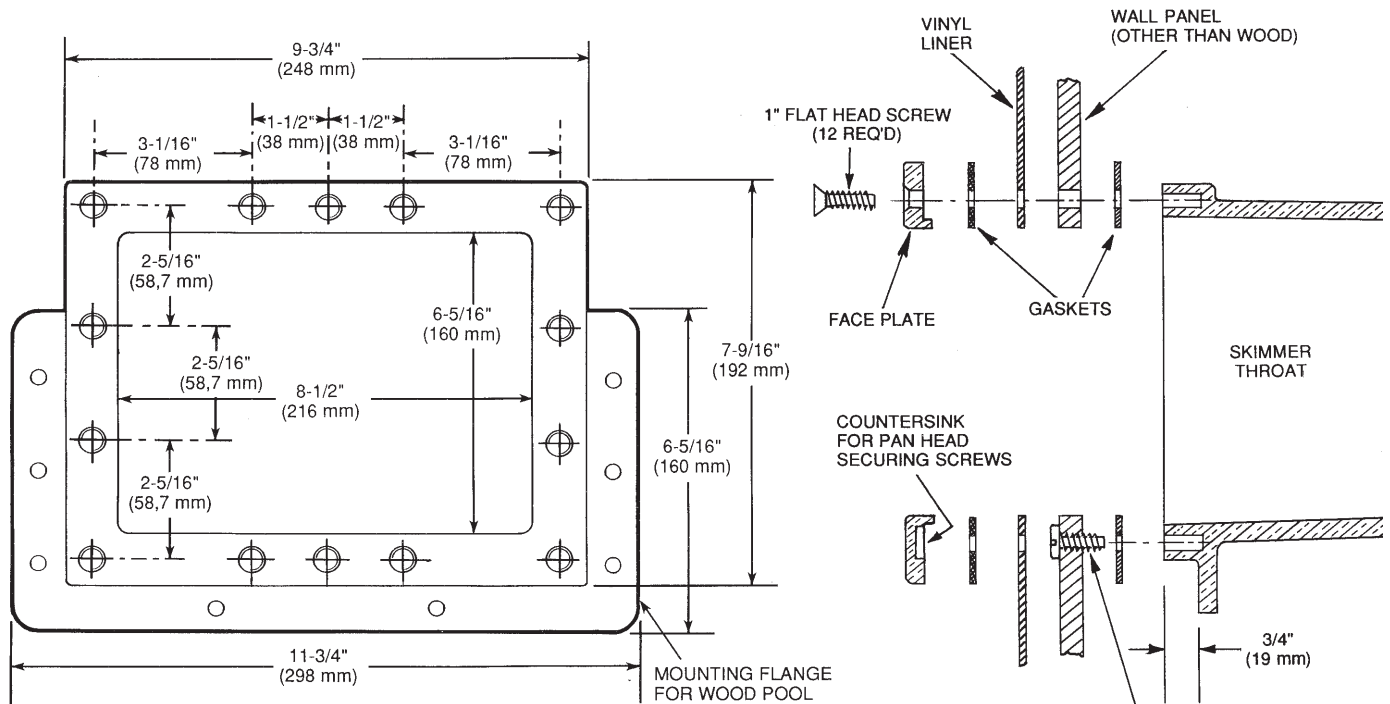
1. Remove screws, pipe plug (if installed) and original slide plate from bottom of SP1082 skimmer.
2. Insert "O" Ring in SP1082GV Valve Housing and place in bottom of skimmer; Port "A" over MAIN DRAIN line port (front); Port "B" over PUMP PORT (rear connection).
3. Insert front Retaining Screw, with washer, into Valve Housing and screw down lightly into insert in skimmer body.
4. Insert rear Retaining Screw, with washer, through SP1082H Flo-Control Slide Plate and into Valve Housing. Screw down firmly into insert in skimmer body. Tighten front retaining screw.

**SKIM/MAIN DRAIN FLOAT/
BY-PASS ASSEMBLY
SP1082FV**

1. Remove screw, pipe plug (if installed) and Flo-Control Slide Plate (if installed) from bottom of basic skimmer.
2. Attach Flo-Control Trimmer Plate to float assembly, using screw provided.
3. Place Float Valve Assembly, with O-ring into skimmer. Adjust Flo-Control Trimmer Plate as required.



INSTALLATION INSTRUCTIONS



CUT OUT PANEL = A – HEIGHT MAX. 6¹/₄" (159mm) MIN. 6" (152mm) ;
 B – WIDTH MAX. 8¹/₄" (210 mm) MIN. 8" (203mm)
 DRILL OR PUNCH (14) 1/4 INCH HOLES AS SHOWN
 TWELVE FOR THRU SCREWS, TWO FOR SECURING SCREWS

INSTRUCTIONS FOR OTHER THAN WOOD PANEL

1. Drill and cut out wall panel section per dimensions.
2. Place gasket on skimmer face, making sure holes in gasket align with holes in skimmer face. (A very light application of adhesive cement will assist in holding gasket in place).
3. Align skimmer face and gasket with drilled panel holes and fasten to wall panel at top center and bottom center with the two pan head securing screws.
4. If vinyl liner pool, install liner before proceeding with Step 5.
5. Align second gasket and face plate and fasten tightly to skimmer face with twelve (12) 1" screws. If vinyl liner pool, pierce liner through face plate holes one at a time prior to inserting screws. Screws secure through 1. Face Plate; 2. Gasket; 3. Liner; 4. Wall Panel; 5. Gasket; 6. Into Skimmer Face.
6. If vinyl liner pool, cut out liner along inside edges of face plate.

The **SP1084** Auto-Skim is furnished with two 2" FPT outlets. One 2" x 1-1/2" reducing bushing is furnished for use in the pump suction outlet where 1-1/2" piping is desired. A 2" pipe plug is furnished for closing off the main drain (or equalizer) line opening when these lines are not used. **SP1084(1)** is furnished with 2" front and 1-1/2" rear outlet and one 2" pipe plug.

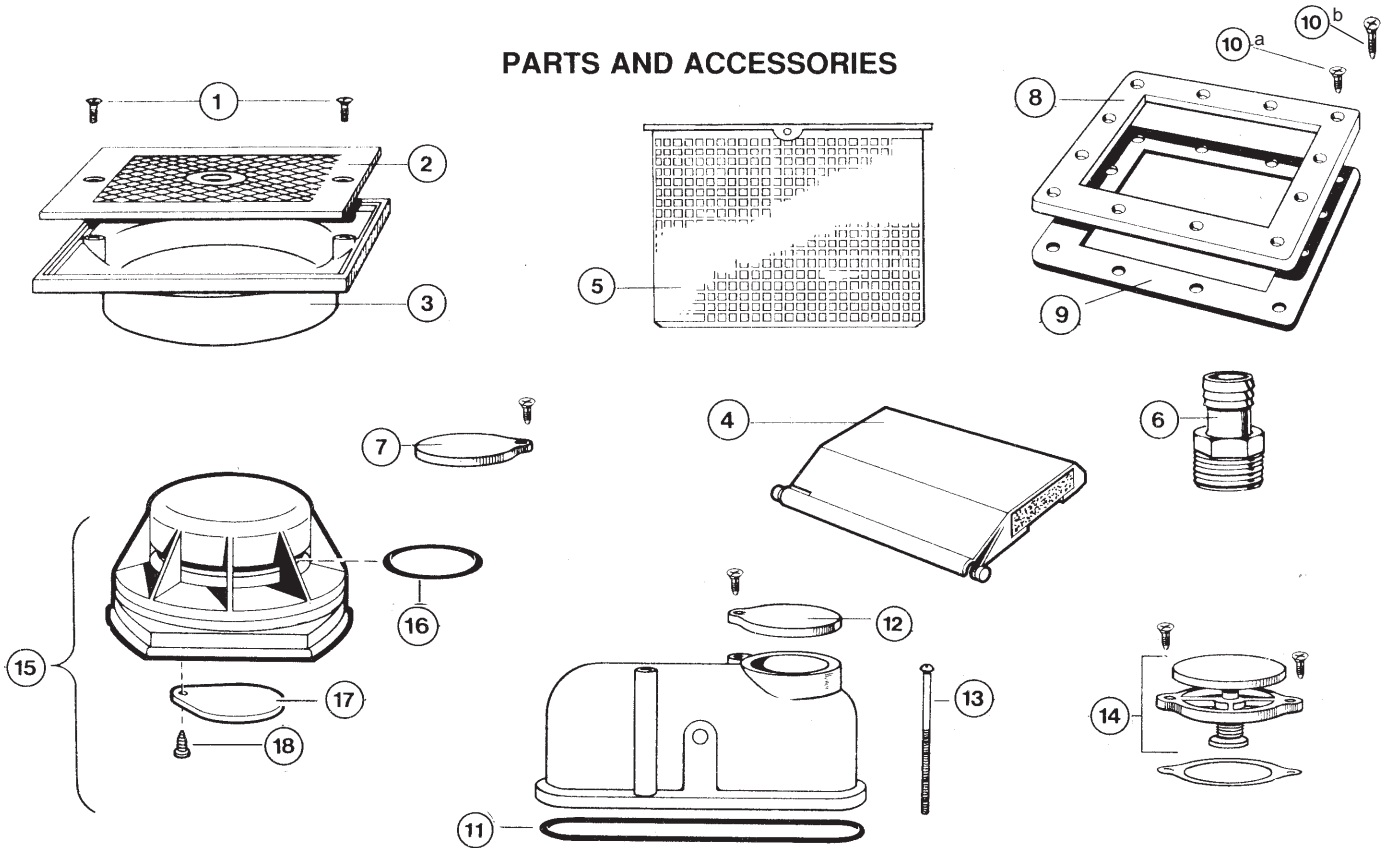
INSTRUCTIONS FOR WOOD PANEL WITH VINYL LINER

1. Cut out wall panel approximately 1/8" larger than *outside* dimensions of skimmer face (NOT face plate).
2. Insert skimmer into panel cut out from the rear, and butt the mounting flange against the rear of the panel. Use "U" shims, if necessary, to make face of skimmer flush with inside of the pool. Fasten the skimmer to the rear of the wood panel by screwing the proper length round head brass wood screws through the mounting flange holes.
3. Place gasket on skimmer face, making sure holes in gasket align with holes in skimmer face. (A very light application of adhesive cement will assist in holding gasket in place.)
4. Install vinyl liner.
5. Align second gasket and face plate and fasten tightly to skimmer face with twelve (12) 1" screws. Pierce liner through face plate holes one at a time prior to inserting screws.
6. Cut out vinyl liner along inside edges of face plate.

LOCATION OF SKIMMERS

To obtain the most effective skimming action over the entire pool surface, locate the skimmers relative to the prevailing wind and drift, shape of pool and water circulation pattern. The use of directional inlet fittings will ensure the proper circulation pattern.

PARTS AND ACCESSORIES



KEY	PART NUMBER	DESCRIPTION	NO. REQ'D.
1	SPX1082Z1	Cover Retaining Screw	2
2	SPX1082E	Cover	1
3	SPX1082F	Adjusting Collar	1
4	SPX1082K	Weir Assembly	1
5	SPX1082CA	Basket	1
6	SPX1082Z3	Vacuum Adapter	1
7	SPX1082H1A	Flo-Control Slide Plate w/Screw	1
8	SPX1084L	Face Plate	1
9	SPX1084B	Gasket	2
10a	SPX1084Z4(A)	Screw (Short)	12
10b	SPX1084Z4AM	Screw (Long)	12
PARTS AND ACCESSORIES			
11	SPX1082Z5B	O-Ring	1
12	SPX1082H1A	Flo-Control Slide Plate w/Screw	1
13	SPX1082Z6	Retaining Screw	2
14	SP1078	Equalizer Valve Assembly	1
15	SP1082FV	Float Valve Assembly	1
16	SPX1070Z2	Float Valve O-Ring	1
17	SPX1070FA	Flo-Control Plate	1
18	SPX1070Z6	Retaining Screw	1

REPAIR PARTS ARE AVAILABLE THROUGH YOUR LOCAL AUTHORIZED HAYWARD DISTRIBUTOR



HAYWARD POOL PRODUCTS, INC.

Hayward Pool Products, Inc.
900 Fairmount Avenue
Elizabeth, NJ 07207

Hayward Pool Products, Inc.
2875 Pomona Boulevard
Pomona, CA 91768

Hayward Pool Products Canada
2880 Plymouth Drive
Oakville, Ontario L6H 5R4

Hayward Pool Products Europe
ZA del'Observatoire
2, Avenue des Chaumes
78182 St. Quentin en Yvelines Cedex
France



5" Super Hi-Flo Suction

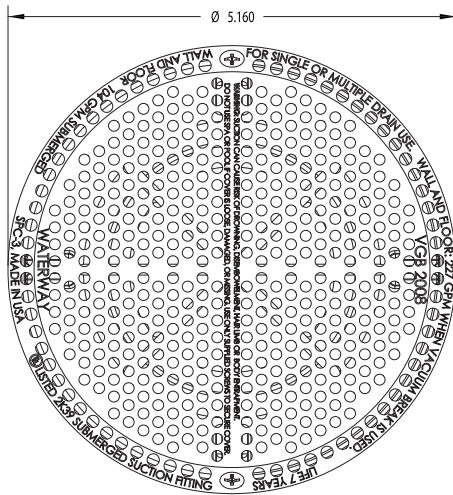
Waterway suction covers are compliant with the Virginia Graeme-Baker Pool and Spa Safety Act (ASME/ANSI A112.19.8-2007) and are UL Certified. They are designed for single or multiple drain use. This suction assembly includes cover, wall fitting assembly, and stainless steel screws. Packed 40 per case.

The Waterway SPC-3 V & SPC-3M V series suction covers are available in:

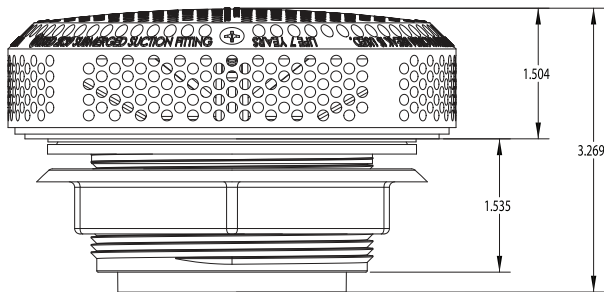
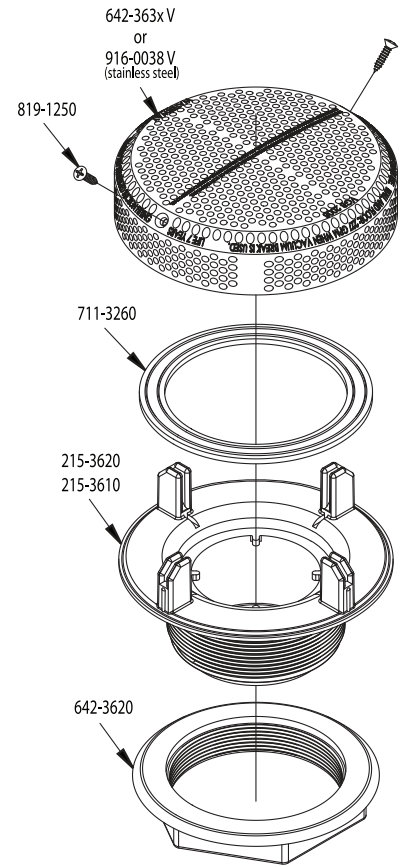
- ☐ White
- Black
- Gray
- Dark Gray
- Beige



Model No.	Description	Size	Total Open Area Square Inches	Floor Flow Rate GPM	Wall Flow Rate GPM	Flow Rate GPM @ 1.5 ft/sec
640-357x V	SPC-3 V - 2"	5"	9.02	N/A	180 @ 6.42 ft/sec	42
640-3570S V	SPC-3M V - 2" - S/S	5"	9.02	N/A	180 @ 6.42 ft/sec	42
640-358x V	SPC-3 V - 2 1/2"	5"	9.02	N/A	180 @ 6.42 ft/sec	42
640-3580S V	SPC-3M V - 2 1/2" - S/S	5"	9.02	N/A	180 @ 6.42 ft/sec	42



Part No.	Description
642-363x V	Suction Cover
916-0038 V	Suction Cover (Stainless Steel)
819-1250	#6 Stainless Steel Screw - 20 x 5/8"
711-3260	Gasket
215-3620	2" Wall Fitting (for 640-357x V)
215-3610	2 1/2" Wall Fitting (for 640-358x V)
642-3620	Wall Fitting Nut



CERTIFICATION OF COMPLIANCE

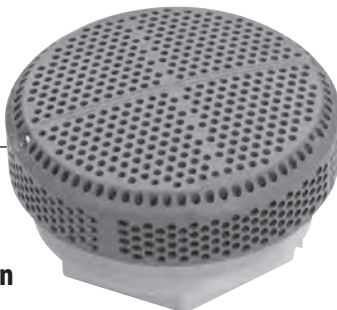
5" SUPER HI-FLO SUCTION: SPC-3 VP

Contents: 1

Model Number: **SPC-3 VP**

Description: **Super Hi-Flo Suction**

Size: **5"**



Wall Flow Rate: **251 GPM**



For Portable Spas only.
At least 2 Suctions per Pump must be used.

Date of Manufacture:

APSP-16-2011

This product has been tested, certified and listed to the requirements of ASME/ANSI A112.19.8-2007, ASME/ANSI A112.19.8a-2008, ASME/ANSI A112.19.8b-2009 and APSP-16-2011 per §1404 of the Virginia Graham Baker (VGB 2008) Pool and Spa Safety Act. Certified by: Underwriters Laboratories, Inc., 2929 E. Imperial Highway, Suite 100, Brea, CA 92821-6729

This product is certified to comply with §1404 of the Virginia Graham Baker (VGB 2008) Pool and Spa Safety Act. A copy of the test results for the above may be found at www.waterwayplastics.com or go to: www.ul.com. This product is manufactured by Waterway Plastics, Oxnard, CA 93030



Waterway™

2200 East Sturgis Road Oxnard, California 93030 • Ph. 805.981.0262 • Fax 805.981.9403
waterway@waterwayplastics.com • www.waterwayplastics.com