

## HOT TUB EQUIPMENT LEGEND

QTY	DESCRIPTION
1	JANDY CL 340 CARTRIGE FILTER WITH PRESSURE GAUGE
1	PENTAIR SUPERFLO 3/4 HP PUMP
1	F-30200P BLUE-WHITE 2.0" PVC PIPE IMPACT FLOW METER WITH OPTIONAL FLOW SENSOR F300S
1	PENTAIR RAINBOW CHLORINATOR MODEL #300
1	LEVELOR - WATER LEVEL CONTROLLER MODEL K-2100
2	TRUE-UNION BALL VALVES FOR PIPE SIZE 3" AND SMALLER
1	6HPHA105 AQUASTAR 6INCH ROUND HOCKEY PUCK FLOOR DRAIN ASSEMBLY
1	SCH 80 PVC PIPE FOR ALL SUCTION, RETURN, AND EQUIPMENT ROOM PIPING
1	HAYWARD SP1084; AUTOMATIC SURFACE SKIMMER
2	WATERWAY 640-3600V; SUCTION ASSEMBLY WITH SPC-3V VGB COMPLIANT COVER
2	AQUA STAR 1020TST01 RETURN INLETS USING ANGLE WALL ADAPTER
2	AQUA STAR 1020TST01 RETURN INLET WITHOUT EYEBALL FOR WATER LEVEL CONTROLLER
1	NATURAL GAS WATER HEATER; PENTAIR MASTER TEMP MDL 300; INCLUDE PENTAIR STA-RITE METAL FLUE COLLAR FOR INDOOR VENTING
1	TAYLOR TEST KIT K-2006 (DPD METHOD OF TESTING FOR CHLORINE RESIDUALS)
	6X6 DEPTH MARKERS, 4" BLACK LETTERING ON WHITE BACKGROUND (SLIP RESISTANT FINISH)
	6X6 INTERNATIONAL "NO DIVING" SYMBOL
	LIFE SAVING EQUIPMENT
1	12FT. LONG STRONG POLE WITH SHEPARD'S HOOK (LIFESAVING HOOK)
1	60 FT. THROWING ROPE AND RING BUOY
1	TELEPHONE WITH POSTED EMERGENCY NAMES AND NUMBERS.

## POOL CONTROLLER LEGEND

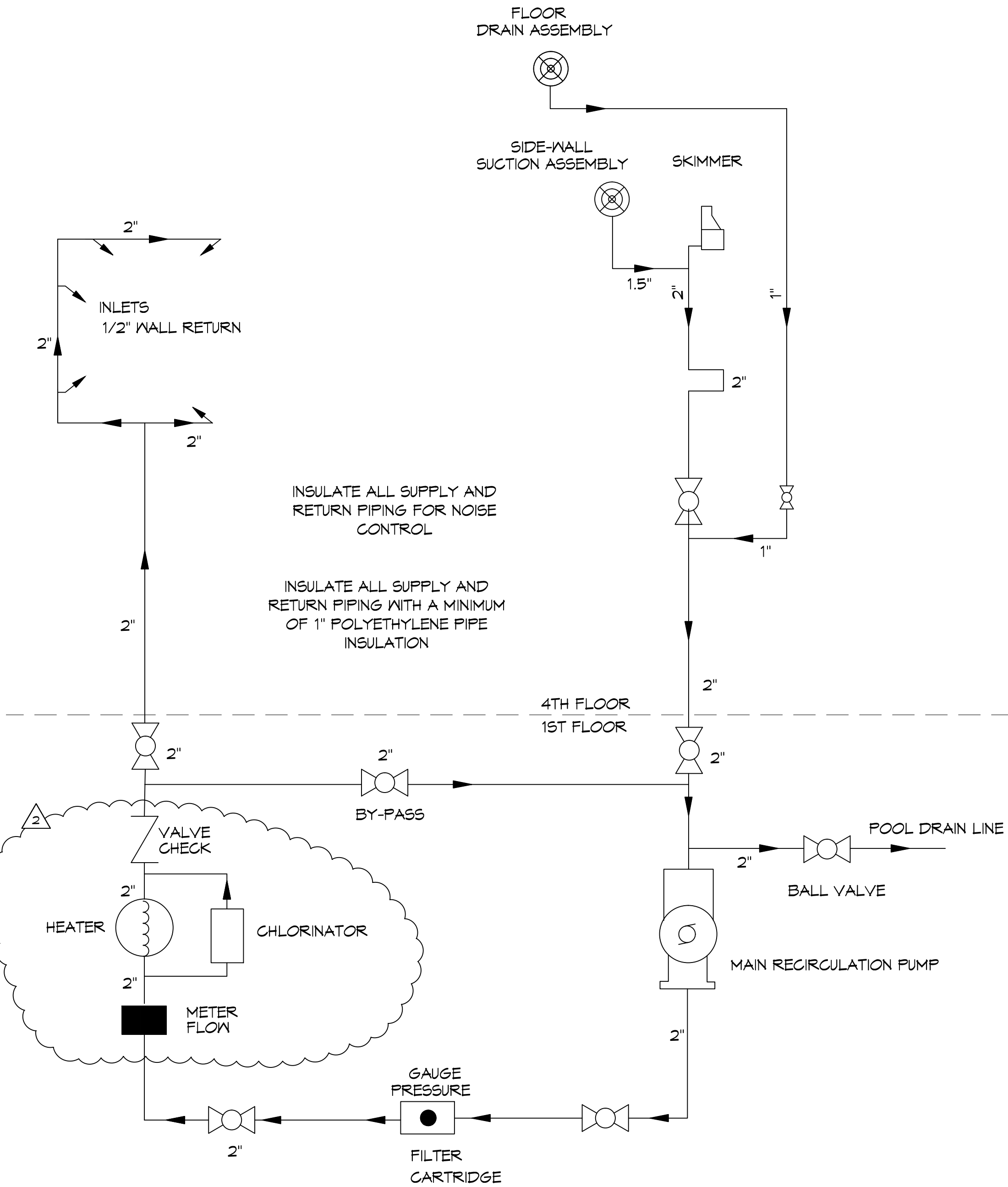
QTY	DESCRIPTION
1	PENTAIR INTELLITOUCH I10+3D SYSTEM
1	PENTAIR INTELLITOUCH INDOOR CONTROLLER
1	PENTAIR IS10 SPA-SIDE REMOTE CONTROLLER
1	PENTAIR IPHONE/IPAD TOUCH INTERFACE
1	PENTAIR LOAD CENTER WITH INTELLITOUCH SUB PANEL
3	PENTAIR TEMPERATURE SENSORS, 1 AIR, 2 WATER
1	PENTAIR COM PORT EXPANSION MODULES P/N 520818

## POOL ACCENT LIGHTING LEGEND

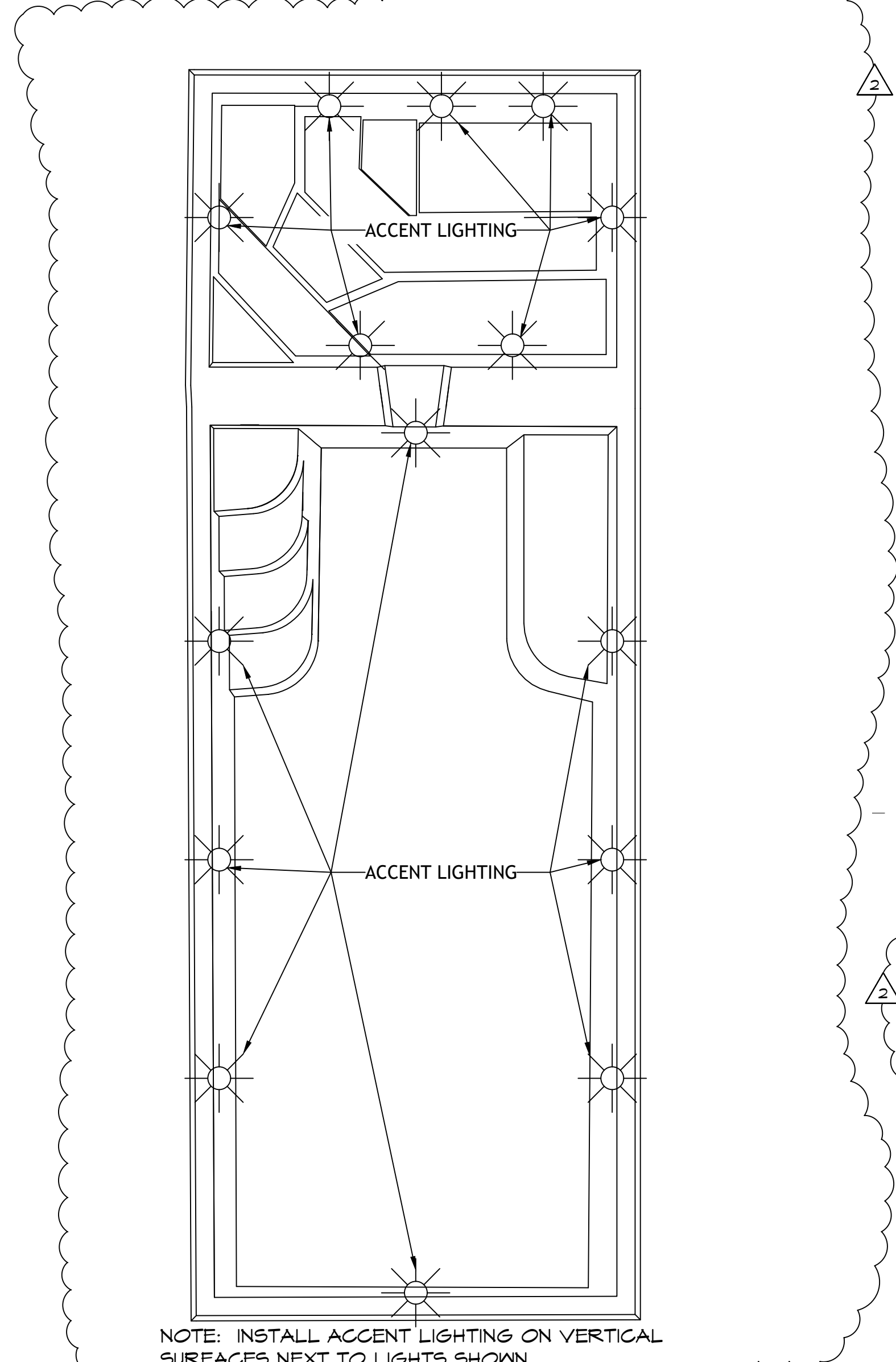
QTY	DESCRIPTION
1	ACCENT LIGHTING - THE LED OR FIBER-OPTICS FIXTURE(S) MUST BE SPECIFICALLY MANUFACTURED FOR INSTALLATION IN A FIBERGLASS POOL/SPA SHELL, DESIGNED FOR UNDERWATER POOL/SPA USE AND HAVE A UL LISTING FOR SUCH OPERATION. THE FIXTURE(S) MUST BE ABLE TO BE CONTROLLED BY PENTAIR'S CENTRALIZED CONTROLLER. EACH FIXTURE SHALL OPERATE AT LOW VOLTAGE AND SHOULD DRAW NOT MORE THAN 100 WATTS. EACH FIXTURE SHALL BE CAPABLE OF LIGHTING A MINIMUM OF 8 FEET OF WATER (THROW DISTANCE). EACH FIXTURE NICHE SHALL BE CONSTRUCTED OF STAINLESS STEEL AISI 316 HOUSING AND SUPPORT HARDWARE. EACH FIXTURE SHALL BE WARRANTED FOR A PERIOD OF 2 YEARS.

## POOL EQUIPMENT LEGEND

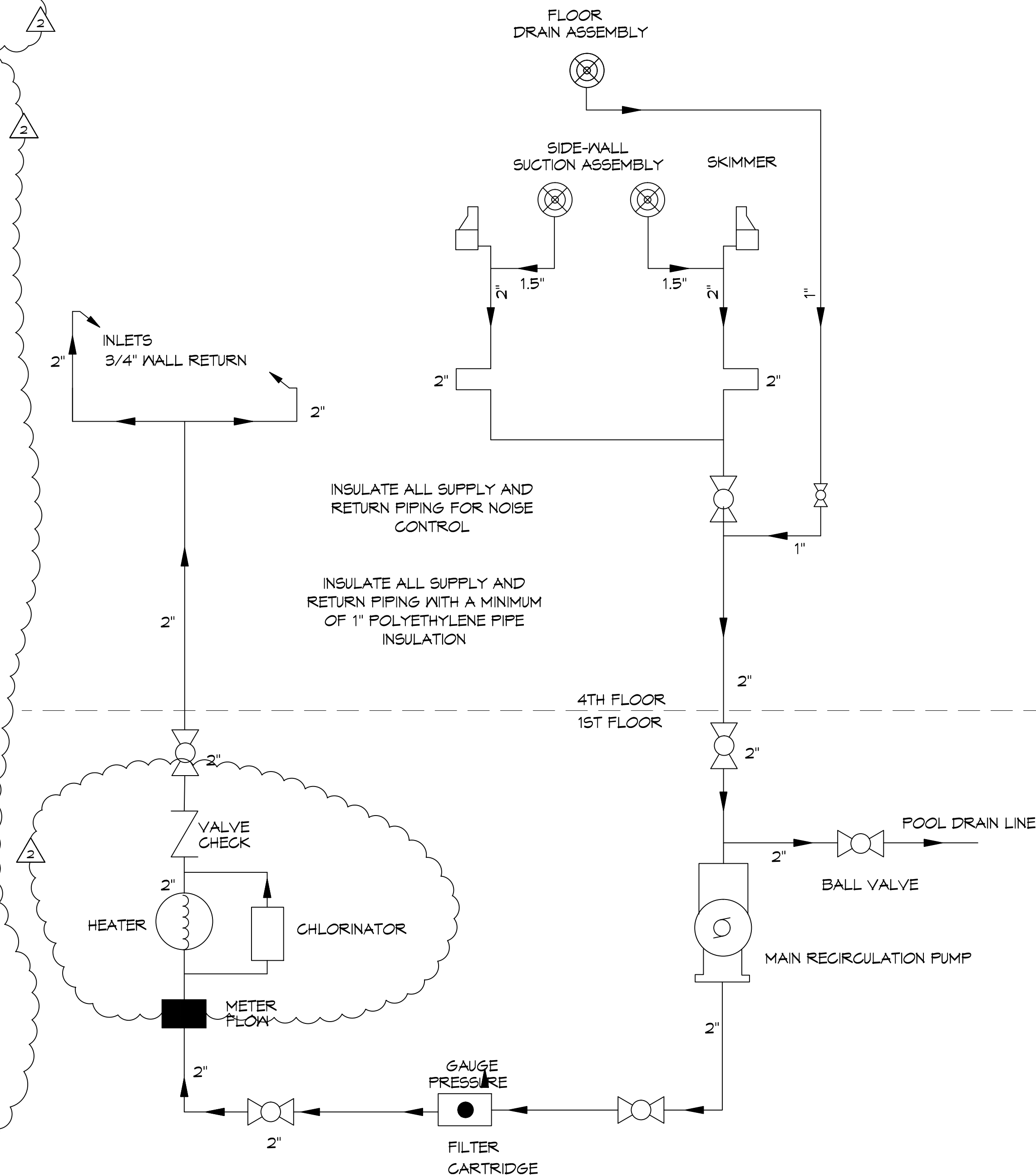
QTY	DESCRIPTION
1	JANDY CL 340 CARTRIGE FILTER WITH PRESSURE GAUGE
1	PENTAIR SUPERFLO 3/4 HP PUMP
1	F-30200P BLUE-WHITE 2.0" PVC PIPE IMPACT FLOW METER WITH OPTIONAL FLOW SENSOR F300S
1	PENTAIR RAINBOW CHLORINATOR MODEL #300
1	LEVELOR - WATER LEVEL CONTROLLER MODEL K-2100
2	TRUE-UNION BALL VALVES FOR PIPE SIZE 3" AND SMALLER
1	6HPHA105 AQUASTAR 6INCH ROUND HOCKEY PUCK FLOOR DRAIN ASSEMBLY
1	SCH 80 PVC PIPE FOR ALL SUCTION, RETURN, AND EQUIPMENT ROOM PIPING
2	HAYWARD SP1084; AUTOMATIC SURFACE SKIMMER
2	WATERWAY 640-3600V; SUCTION ASSEMBLY WITH SPC-3V VGB COMPLIANT COVER
2	AQUA STAR 1020TST01 RETURN INLETS USING ANGLE WALL ADAPTER
2	AQUA STAR 1020TST01 RETURN INLET WITHOUT EYEBALL FOR WATER LEVEL CONTROLLER
1	NATURAL GAS WATER HEATER; PENTAIR MASTER TEMP MDL 200; INCLUDE PENTAIR STA-RITE METAL FLUE COLLAR FOR INDOOR VENTING
1	TAYLOR TEST KIT K-2006 (DPD METHOD OF TESTING FOR CHLORINE RESIDUALS)
	6X6 DEPTH MARKERS, 4" BLACK LETTERING ON WHITE BACKGROUND (SLIP RESISTANT FINISH)
	6X6 INTERNATIONAL "NO DIVING" SYMBOL
	LIFE SAVING EQUIPMENT
1	12FT. LONG STRONG POLE WITH SHEPARD'S HOOK (LIFESAVING HOOK)
1	60 FT. THROWING ROPE AND RING BUOY
1	TELEPHONE WITH POSTED EMERGENCY NAMES AND NUMBERS.



**2 HOT TUB PLUMBING ONE-LINE DIAGRAM**  
SCALE: N.T.S.



**3 POOL LIGHTING PLAN**  
SCALE: N.T.S.



**1 POOL PLUMBING ONE-LINE DIAGRAM**  
SCALE: N.T.S.

#	DESCRIPTION	DATE
1	REVISED ONE-LINE AND EQUIPMENT LIST	8/17/2017
2	REVISED EQUIPMENT LEGEND/ADDED LIGHTING	8/14/2017



NEW POOL 4th Floor  
**KANANAKO MUSEUM**  
917 Conti Street  
New Orleans, Louisiana  
JOB No: 2309 DATE: May 22, 2017  
DRAWN BY: DPE CHECKED BY: BK

SHEET TITLE:  
PLUMBING ONE-LINE  
DIAGRAMS

DRAWING NUMBER:

**PL-3.1**