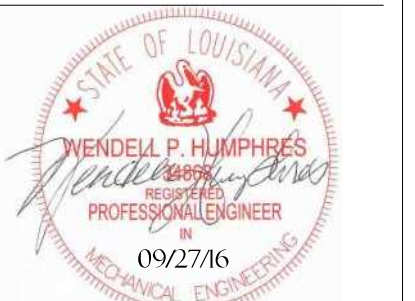
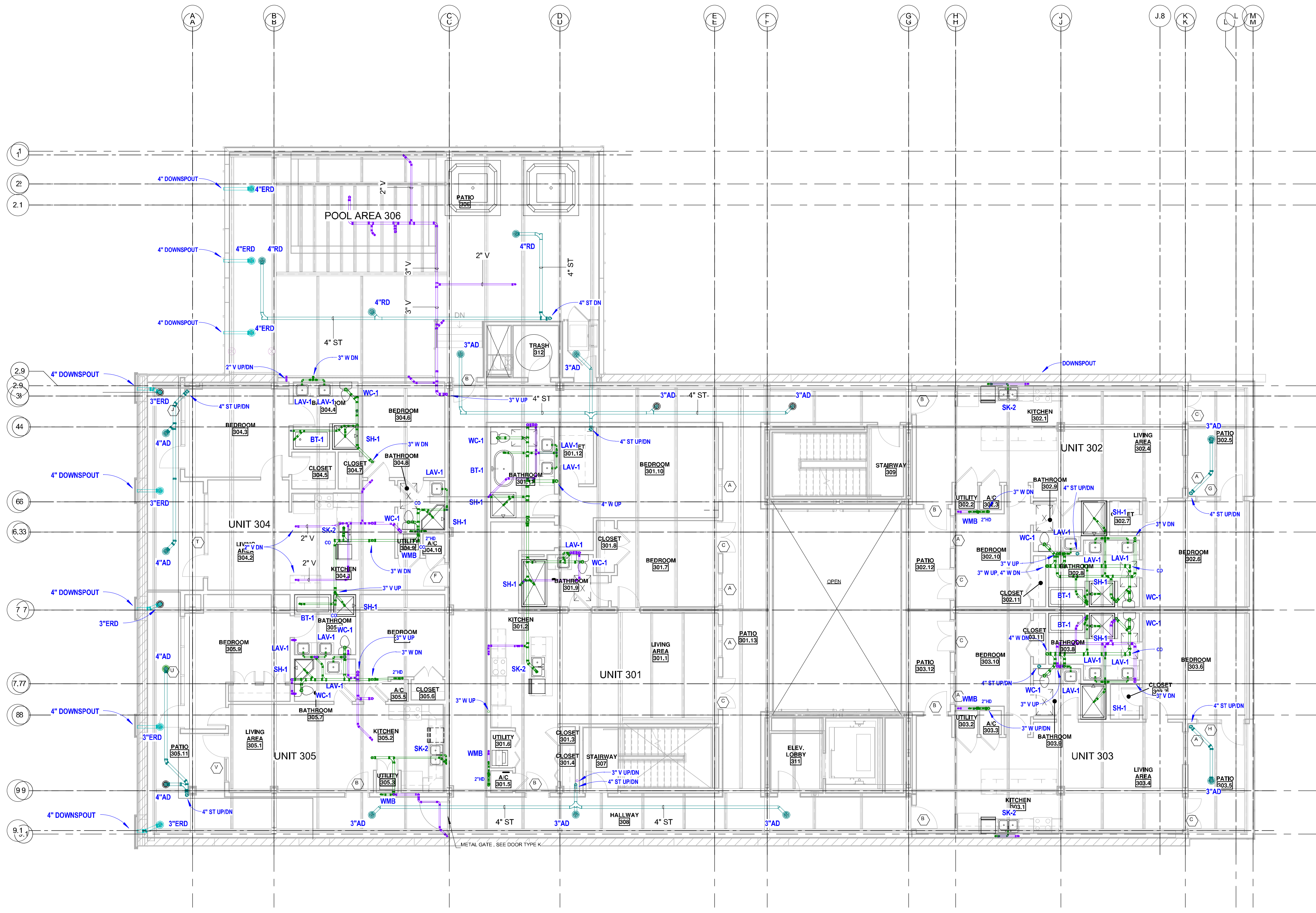


NOTE: THE INFORMATION CONTAINED IN THIS DOCUMENT IS PROPRIETARY TO PONTCHARTRAIN MECHANICAL CO., INC. THE DOCUMENT MAY NOT BE DISCLOSED, DUPLICATED, OR USED FOR ANY PURPOSE, IN WHOLE OR IN PART, WITHOUT THE PRIOR WRITTEN CONSENT OF PONTCHARTRAIN MECHANICAL CO., INC.

THESE PLANS AND SPECIFICATIONS HAVE BEEN PREPARED BY ME OR UNDER MY CLOSE PERSONAL SUPERVISION AND TO THE BEST OF MY KNOWLEDGE AND BELIEF THEY COMPLY WITH ALL CITY, STATE AND FEDERAL REQUIREMENTS, AND I AM NOT PROVIDING CONTRACT ADMINISTRATION.



THIS DRAWING IS CONFIDENTIAL AND NOT BE LOANED, REPRODUCED, COPIED, EITHER WHOLLY OR IN PART, OR MADE PUBLIC IN ANY MANNER WITHOUT THE WRITTEN CONSENT OF HBSA II ARCHITECTS, A PROFESSIONAL L.L.C. ALL RIGHTS OF DESIGN OR INVENTION ARE RESERVED AND WILL REMAIN THE SOLE PROPERTY OF HBSA II ARCHITECTS A PROFESSIONAL L.L.C.



1 3rd FLOOR - PLUMBING - W&V
1/8" = 1'-0"

REVISION HISTORY			
NO.	DATE	DESCRIPTION	BY
1	06/20/16	SCHEMATIC DESIGN	
2	07/14/16	DESIGN DEVELOPMENT	
3	08/12/16	PERMIT REVIEW	
4	09/27/16	PERMIT	

3rd FLOOR - W&V
PROJECT#:
PHASE: PERMIT
DRAFTER: MNB
CHECKER: WPH
SCALE: AS NOTED
ISSUED: 9/27/2016

