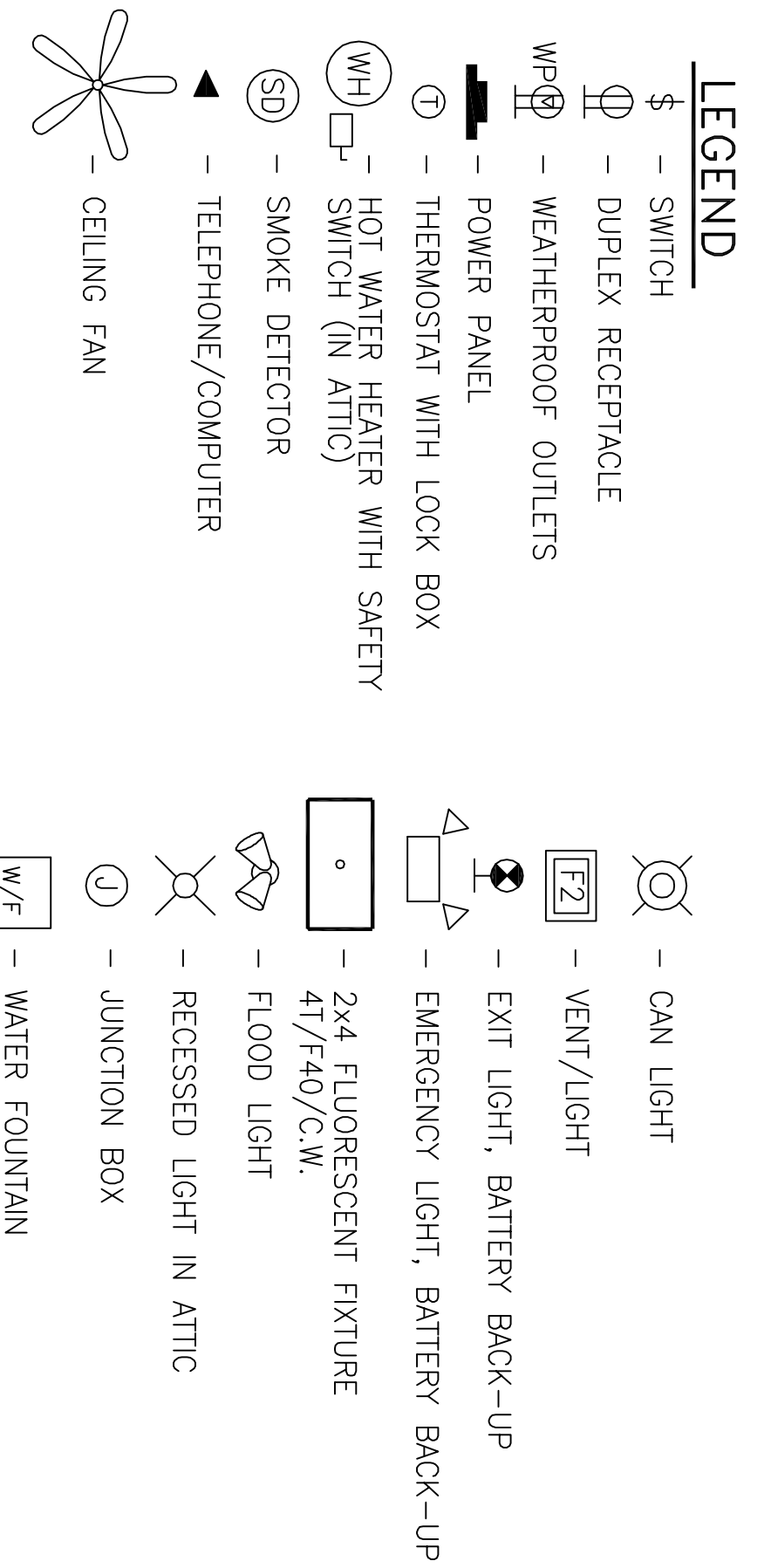
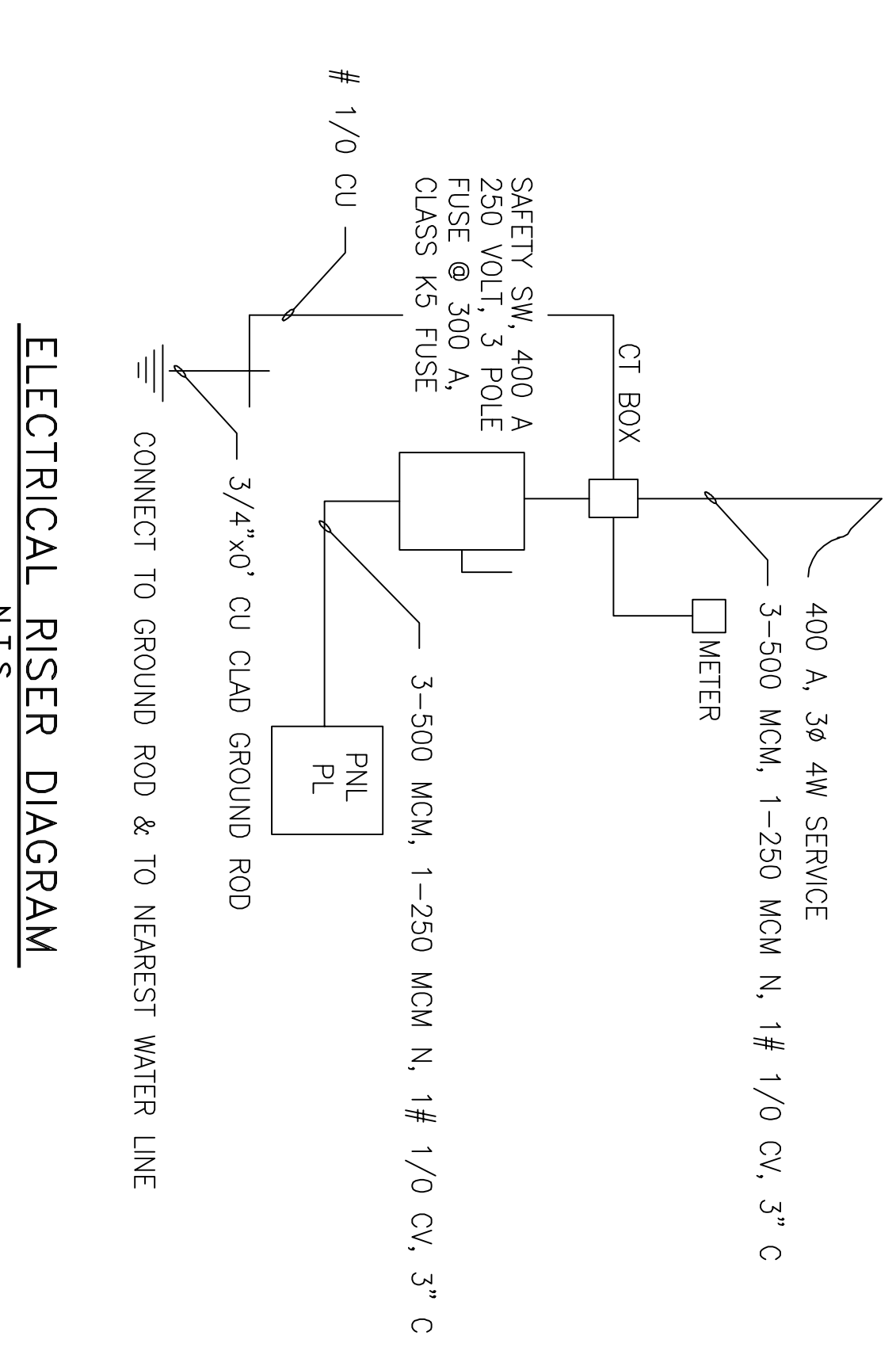


PANEL R1 - 100 OFFICE
ENCLOSURE SURFACE MOUNTED W/EQUIPMENT GRND BAR
FEEDER SOURCE
TYPE OO LOAD CENTER

NO.	LOAD DESCRIPTION	BREAKER AMP	POLE	LOAD (VA)	NO.	LOAD DESCRIPTION	BREAKER AMP	POLE	LOAD (VA)	NO.	
1	WADING & HALLWAY LIGHTS	20	1	-	20	TOILET VENT/LIGHT	20	1	20	2	
3	REV. & SECRETARY LIGHTS	20	1	-	1	DINING & KITCHEN LIGHTS	20	1	20	4	
5	WOMEN'S TOILET VENT/LIGHT	20	1	-	1	MENS TOILET VENT/LIGHT	20	1	20	6	
7	FOOD SUPPLY LIGHTS	20	1	-	1	WAREHOUSE LIGHTS	20	1	20	8	
9	EXIT LIGHTS	20	1	-	1	EMERGENCY LIGHTS	20	1	20	10	
11	WAREHOUSE & KITCHEN OUTLETS	20	1	-	1	WAREHOUSE OUTLETS	20	1	20	12	
13	ATTIC LIGHT & OUTLET	20	1	-	1	DINING & KITCHEN OUTLETS	20	1	20	14	
15	SECRETARY & OFFICE OUTLETS	20	1	-	1	STORE LIGHTS	20	1	20	16	
17	STORE LIGHTS	20	1	-	1	STORE OUTLETS	20	1	20	18	
19	WADING & REV. OUTLETS	20	1	-	1	SMOKE DETECTORS	20	1	20	22	
21	POUCH LIGHTS	20	1	-	1	WAREHOUSE LIGHTS	20	1	20	24	
23	FLOOD LIGHTS	20	1	-	1	HOT WATER HEATER	20	1	20	26	
25	A/C UNIT # 1	40	2	-	2	A/C UNIT # 2	40	2	40	28	
29	A/C UNIT # 3	40	1	-	1	GELING PANE IN WAREHOUSE	20	1	20	30	
31	COOKTOP	40	1	-	1	WAREHOUSE OUTLETS	20	1	20	32	
33	SPACE	20	1	-	1	SPACE	20	1	20	34	
35	SPACE	20	1	-	1	SPACE	20	1	20	36	
37	SPACE	20	1	-	1	SPACE	20	1	20	38	
39	SPACE	20	1	-	1	SPACE	20	1	20	40	
41	SPACE	20	1	-	1	SPACE	20	1	20	42	
				TOTAL CONNECTED LOAD (VA)						GROUND RISE (V)	
				AS		BS		CS			



ELECTRICAL PLAN
SCALE: 3/16"=1'-0"



- GENERAL NOTES**
- ALL WORK SHALL CONFORM TO THE LATEST EDITION OF THE NATIONAL ELECTRICAL CODE, THE GOVERNING ELECTRICAL CODE, AND ALL OTHER INSPECTION DEPARTMENTS HAVING JURISDICTION. OBTAIN CERTIFICATES OR APPROVAL WHERE REQUIRED.
 - ALL MATERIALS FURNISHED SHALL BE NEW AND SHALL BE U.L. LISTED.
 - THE DRAWINGS INDICATE SIZE AND GENERAL LOCATION OF WORK. SCALE DIMENSIONS SHALL NOT BE USED. THE EXACT LOCATION AND ELEVATION OF ALL LIGHTING FIXTURES, RECEPTACLES AND TELEPHONE OUTLETS, ETC. SHALL BE DETERMINED BY ACTUAL CONDITIONS IN THE FIELD, UNLESS NOTED OTHERWISE.
 - PRIOR TO BIDDING, CONTRACTOR SHALL VISIT THE JOB SITE AND FAMILIARIZE THEMSELVES WITH THE EXISTING CONDITIONS.
 - ELECTRICAL CONTRACTOR SHALL COORDINATE HIS WORK WITH OTHER TRADES AND WITH OTHER CONTRACTORS WHOSE WORK MAY AFFECT THIS INSTALLATION.
 - ELECTRICAL CONTRACTOR SHALL COORDINATE INCOMING ELECTRICAL SERVICE WITH UTILITY COMPANY AND INCLUDE IN HIS BID ALL CHARGES AND FEES INCURRED IN MODIFICATIONS.

- WHERE MORE THAN ONE SWITCH OCCURS IN THE SAME LOCATION, THEY SHALL BE INSTALLED IN A GANG TYPE BOX UNDER ONE COVER PLATE.
- ELECTRICAL CONTRACTOR SHALL COORDINATE THE TELEPHONE INSTALLATION WITH THE TELEPHONE COMPANY AND THE GENERAL CONTRACTOR.
- ELECTRICAL CONTRACTOR, BEFORE INSTALLING ANY OF THE WORK, SHALL SEE THAT IT DOES NOT INTERFERE WITH CLEARANCES REQUIRED FOR FINISHED COLUMNS, HUNG CEILINGS, PLASTER, PARTITIONS, WALLS, ETC. AS SHOWN IN THE ARCHITECTURAL DRAWINGS AND DETAILS. IF ANY WORK IS INSTALLED AND IT LATER DEVELOPS THAT SUCH DETAILS OR DESIGN CANNOT BE FOLLOWED, THE CONTRACTOR, AT HIS OWN EXPENSE, SHALL MAKE SUCH CHANGES IN THE WORK AS DIRECTED BY THE ARCHITECT, AS WELL AS TO PERMIT THE INSTALLATION OF THE ARCHITECTURAL WORK AS SHOWN ON THE PLANS AND DETAILS.
- PERFORM TEST REQUIRED BY THE OWNER OR THE ENGINEER IN CONNECTION WITH THE OPERATION OF THE ELECTRICAL SYSTEM IN THE BUILDING.
- ALL TESTS SHALL BE MADE IN ACCORDANCE WITH THE LATEST STANDARD OF THE IEEE AND THE NATIONAL ELECTRICAL CODE.

- MINIMUM CONDUCTOR SIZE SHALL BE #12, 600V INSULATION, MINIMUM SIZE CONDUIT SHALL BE 3/4" EMT FOR INTERIOR USE, AND 3/4" RIGID ALUMINUM FOR EXTERIOR USE. USE TYPE NMC CABLE IN CONTROL RM BLDG. FOR LIGHTS & RECEPTACLE CIRCUITS. EXTERIOR FITTINGS SHALL BE CAST BOXES AND COVERS. INTERIOR FITTINGS SHALL BE CAST WHERE EXPOSED ON WALLS; STAMPED BOXES MAY BE USED ABOVE CEILINGS IN AIR CONDITIONED SPACES.
- CONTRACTOR SHALL INSTALL WIRING AND OTHER CIRCUIT COMPONENTS TO MATCH EQUIPMENT ACTUALLY INSTALLED.
- INSTALL GROUND FAULT RECEPTACLES AT RECEPTACLE LOCATIONS WITHIN 5' OF SINKS OR LAVATORIES, AND AT EXTERIOR LOCATIONS. EXTERIOR RECEPTACLES SHALL ALSO BE WEATHERPROOF.
- BONDING AND GROUNDING SHALL BE IN ACCORDANCE WITH NFPA 70:250-63, NFPA 250-23, 250-71, & 250-72.
- GROUND NEUTRAL IN ACCORDANCE WITH NFPA 70:250-23b.
- FUSES SHALL BE ITC CLASS K5, 250 VOLT, 200,000 AMP INTERRUPTING CAP.
- PROVIDE SERVICES OF A FIRE/SMOKE DETECTION & ALARM COMPANY TO DESIGN & INSTALL ALARM SYSTEM TO MEET REQUIREMENTS OF THE STATE FIRE MARSHALL.