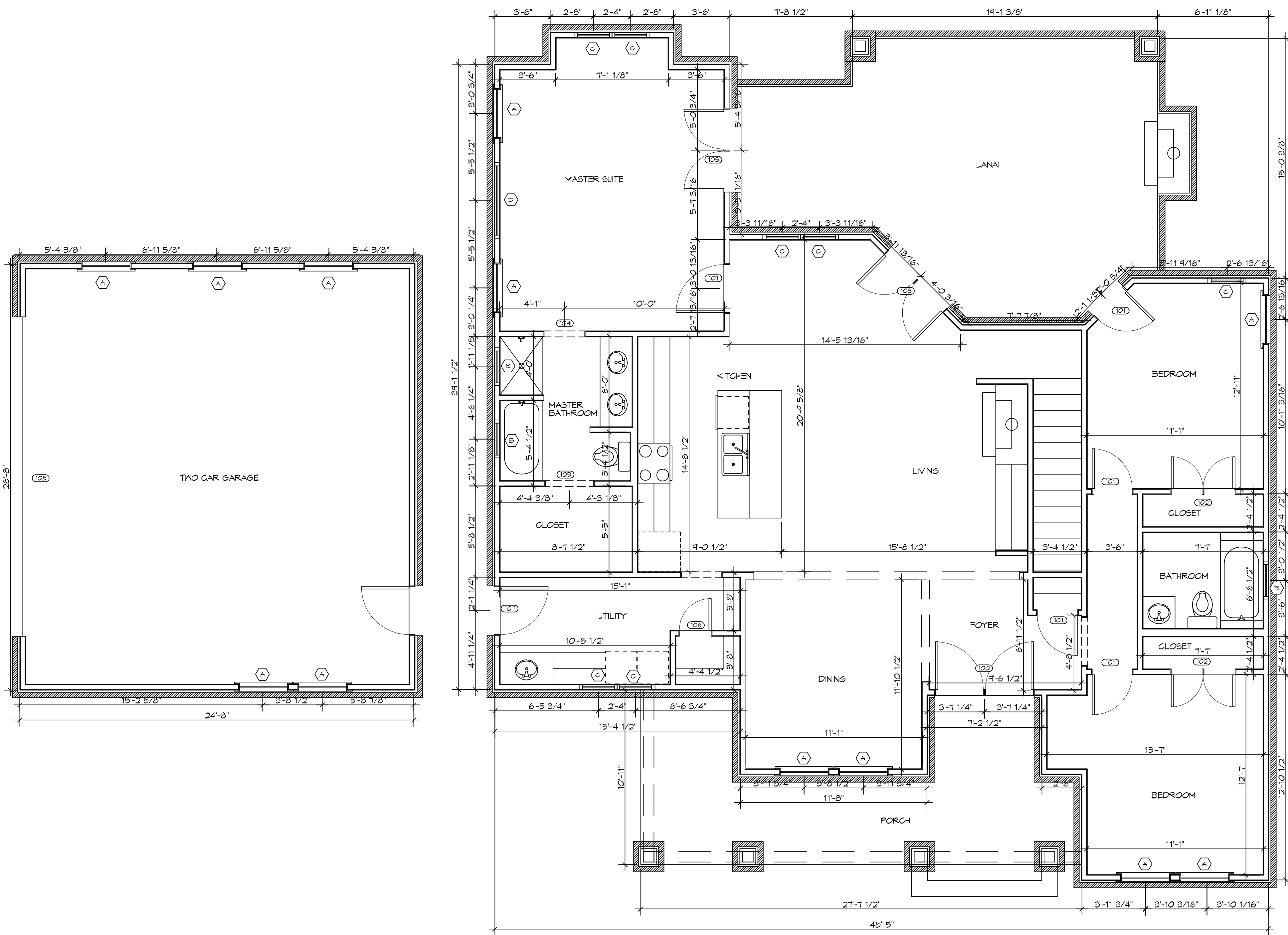


FILE NAME: A:\RESIDENTIAL\Craig Bergeron\Working\A101.dwg - floor plans.dwg PLOT DATE: 8/1/2019 10:20:13 AM



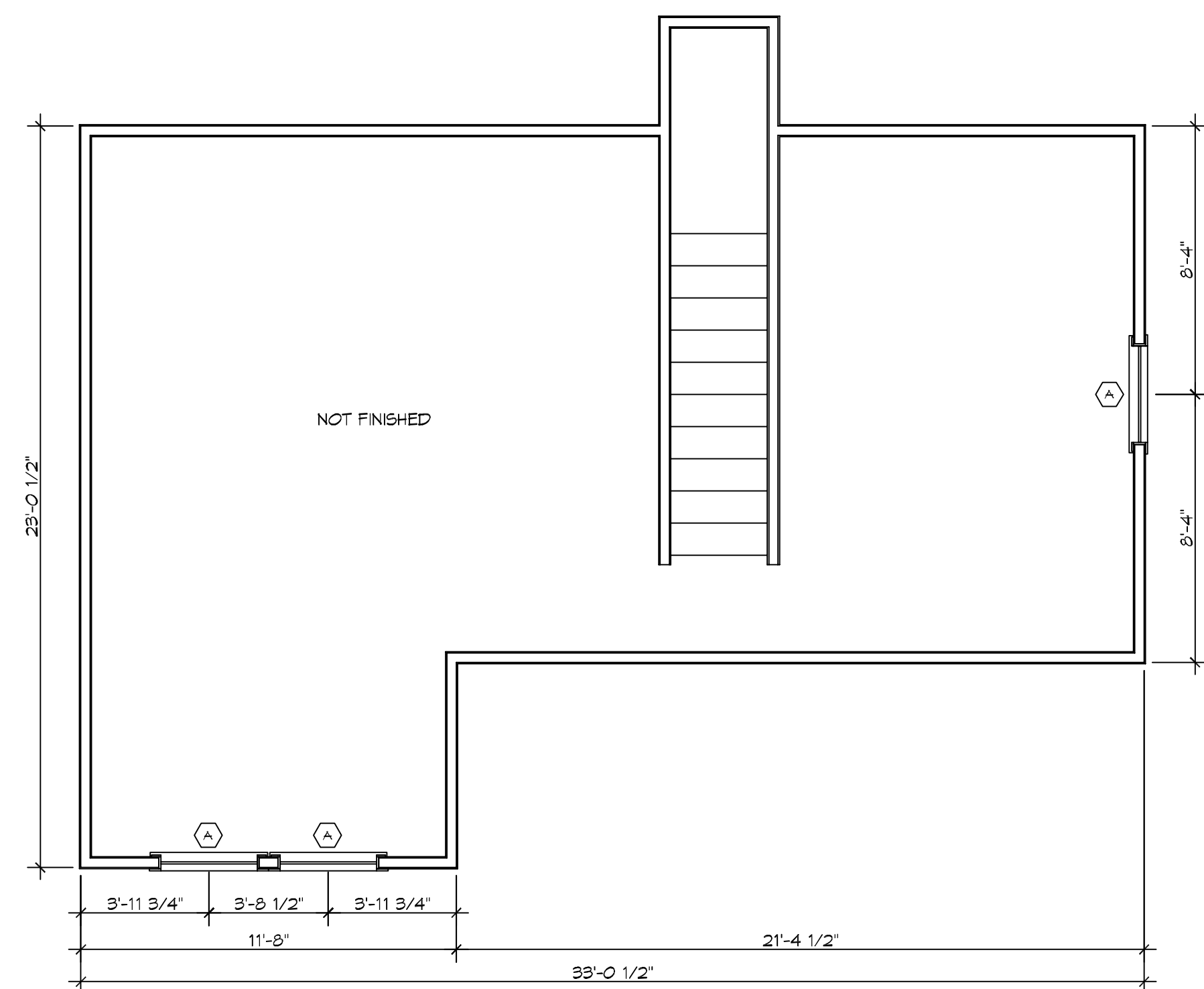
LEVEL 1
SCALE: 1/4" = 1'-0"

ARCHITECTURAL

DOOR SCHEDULE							REMARKS
MK	WIDTH	HEIGHT	THK	DOOR MAT	FRAME MAT	RATED	
100	(2) 3'-0"	6'-8"	1-3/4"	INSUL MTL	MTL	NR	
101	2'-8"	6'-8"	1-3/4"	MASONITE	WOOD	NR	
102	(2) 2'-0"	6'-8"	1-3/4"	MASONITE	WOOD	NR	
103	(2) 2'-6"	6'-8"	1-3/4"	MASONITE	WOOD	NR	
104	2'-6"	6'-8"	1-3/4"	MASONITE	WOOD	NR	BARN DOOR
105	3'-0"	6'-8"	-	-	WOOD	NR	CASED OPENING
106	2'-0"	6'-8"	1-3/4"	MASONITE	WOOD	NR	
107	3'-0"	6'-8"	1-3/4"	INSUL MTL	MTL	NR	
108	16'-0"	8'-0"	-	MTL	MTL	NR	GARAGE DOOR

FINISH SCHEDULE						REMARKS
ROOM NAME	FLOOR	BASE	WALL	CEILING		
FIRST FLOOR	LAMINATE WOOD	6" BASEBOARD	5/8" GYP BD	5/8" GYP BD		TYPE "X"
BATHROOM	CERAMIC	CERAMIC	5/8" GYP BD	5/8" GYP BD		MOISTURE RESISTANT TYPE "X"
SECOND FLOOR	LAMINATE WOOD	6" BASEBOARD	5/8" GYP BD	5/8" GYP BD		TYPE "X"

WINDOW SCHEDULE					REMARKS
MK	SIZE	FRAME	TYPE		
A	3'-0" X 5'-6"	ALUM	OPERABLE		
B	4'-0" X 1'-0"	ALUM	-	TRANSOM WINDOW	
C	2'-6" X 5'-6"	ALUM	OPERABLE		
D	8'-0" X 2'-0"	ALUM	-	TRANSOM WINDOW	



LEVEL 2
SCALE: 1/4" = 1'-0"

ARCHITECTURAL

DAMMON ENGINEERING, INC.
LOUISIANA & MISSISSIPPI
www.dammonengineering.com
info@dammonengineering.com
PH: 985.649.9832
Chief Engineer: Brian Mitchell, PE
554 Old Spanish Trail
Slidell, LA 70688

#	DESCRIPTION	DATE

SEAL:

CRAIG BERGERON
NEW RESIDENTIAL
HUGO COURT
DIAMONDHEAD, MS 39525
JOB No: 08-26-2019
DATE: 2019
DRAWN BY: RLD
CHECKED BY: CKD

SHEET TITLE:
FLOOR PLANS
LEVEL 1 & LEVEL 2

DRAWING NUMBER:

A101

SHEET No: 4 of 10