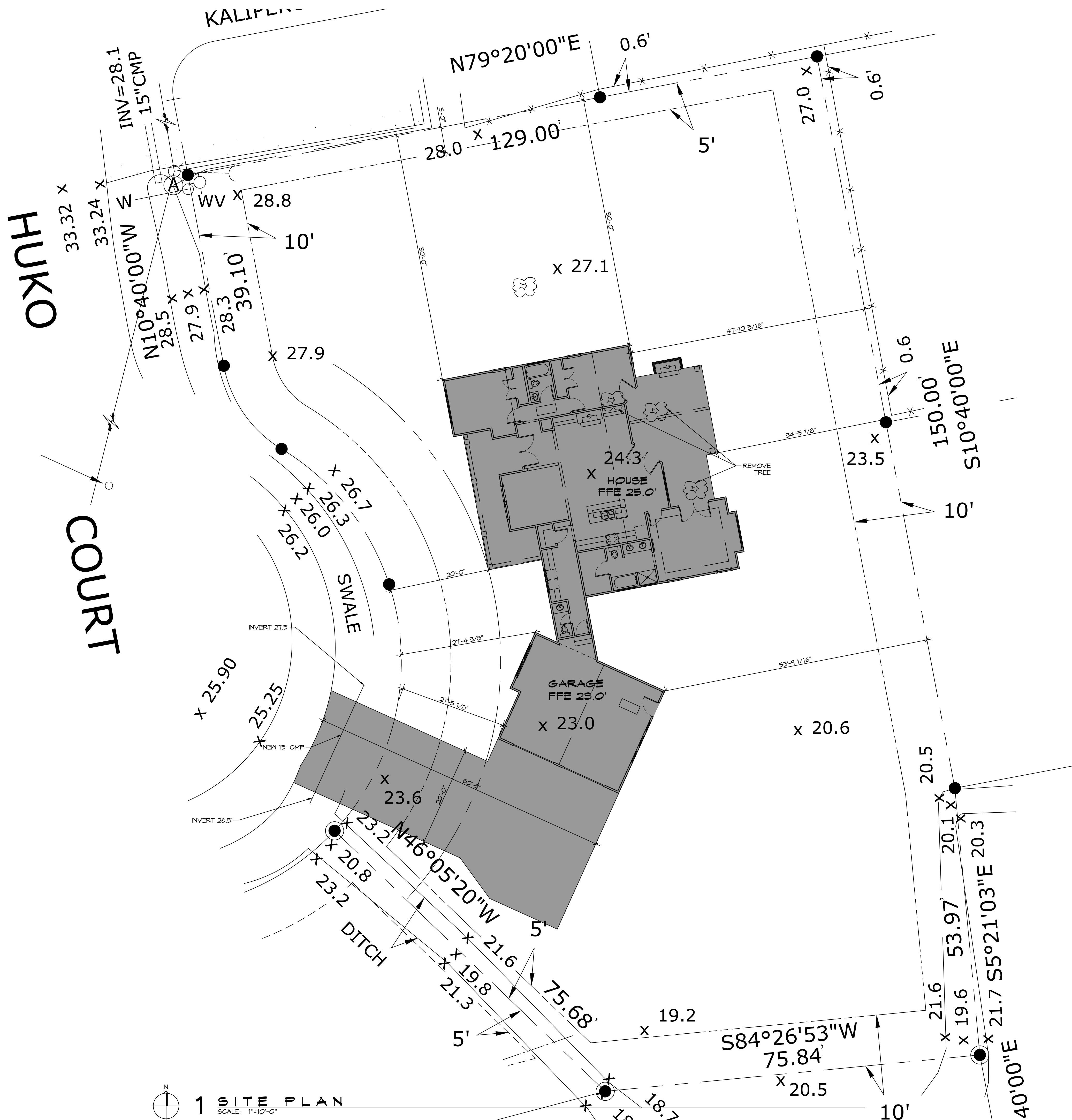


FILE NAME: \\s:\projects\2022\10-10-22\10-10-22.dwg DATE: 10/10/22 10:41:10 AM



1 SITE PLAN
SCALE: 1"=10'-0"

PROJECT BERGERON RESIDENCE
TOTAL SQUARE FEET = 2,936 HOUSE = 1,706 GARAGE = 648 PORCHES = 582
SURVEY LEGAL
LOTS 10 & 11 DIAMONDHEAD BLOCK 12, UNIT 10, PHASE II HANCOCK COUNTY, MS
PLANNING
ZONED - RESIDENTIAL
BUILDING ELEVATION
BASE FLOOD ELEVATION = N/A FINISHED FLOOR ELEVATION = 27.83'
SITE SETBACKS
FRONT SET BACK = 10'-0" SIDE = 5'-0" REAR = 10'-0"
DESIGN CRITERIA
THE CONSTRUCTION FOR SAID RESIDENCE, WHERE BASIC WIND SPEED IS 130 MILES PER HOUR, WIND EXPOSURE ZONE C, IS DESIGNED IN ACCORDANCE WITH: AMERICAN FOREST AND PAPER ASSOCIATION (AF&PA) WOOD FRAME CONSTRUCTION MANUAL FOR ONE AND TWO FAMILY DWELLINGS (WFCM) 2019 EDITION AS WELL AS THE INTERNATIONAL RESIDENTIAL CODE (IRC) 2018 EDITION

SHEET INDEX	
SHEET #	SHEET TITLE
C101	SITE PLAN
S101	FOUNDATION PLAN AND DETAILS
S102	TYPICAL CONNECTION DETAILS, SCHEDULES AND NOTES
A101	FLOOR PLAN
A102	HOUSE ELEVATIONS
A103	GARAGE ELEVATIONS
A104	HOUSE AND GARAGE SECTION AND ROOF PLAN
P101	PLUMBING FLOOR PLAN AND RISER
M101	MECHANICAL FLOOR PLAN
E101	POWER AND LIGHTING FLOOR PLAN

DAMMON ENGINEERING, INC.
LOUISIANA & MISSISSIPPI

Chief Engineer: Brian Mistich, PE
554 Old Spanish Trail
Slidell, LA 70558
www.dammonengineering.com
info@dammonengineering.com
PH: 985.649.5832

DATE	REVISIONS



NEW RESIDENTIAL
CRAIG BERGERON

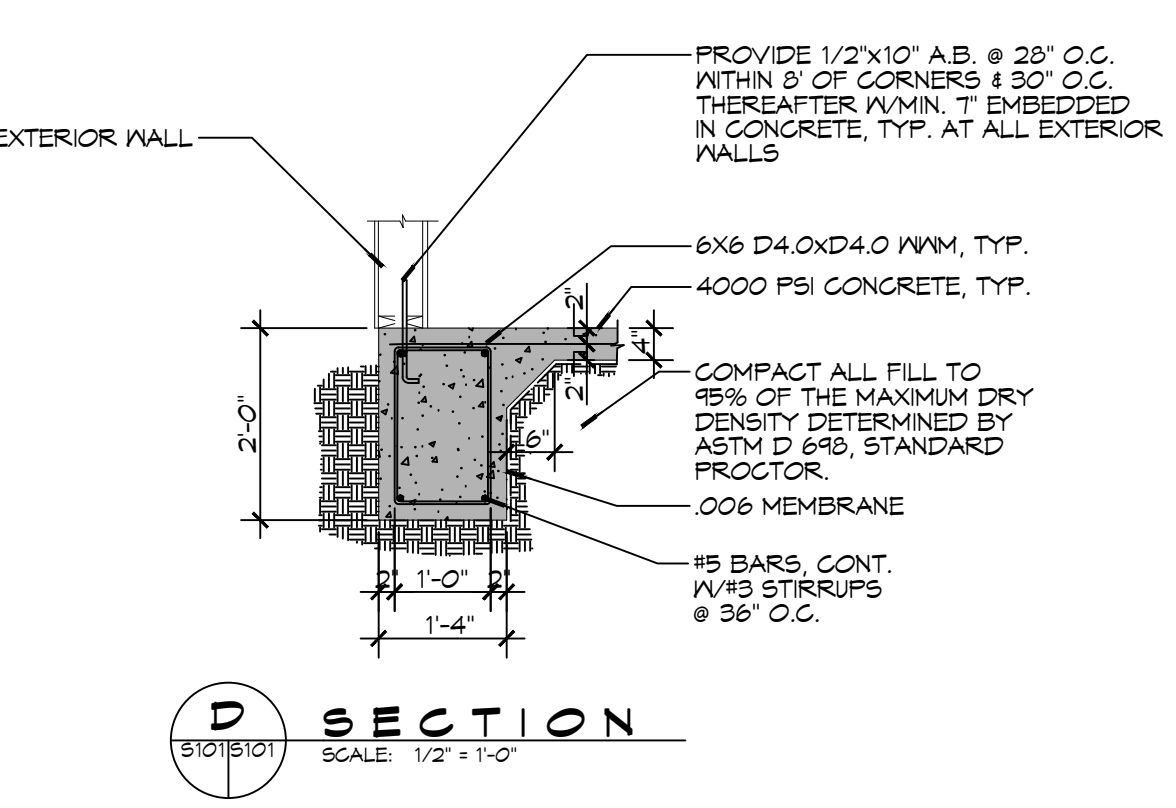
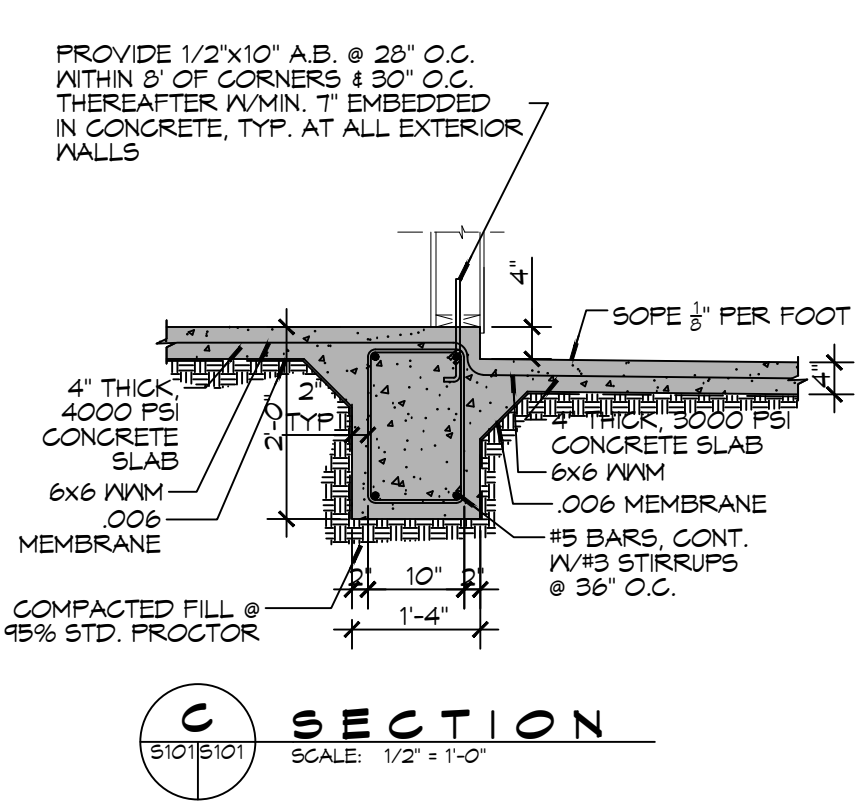
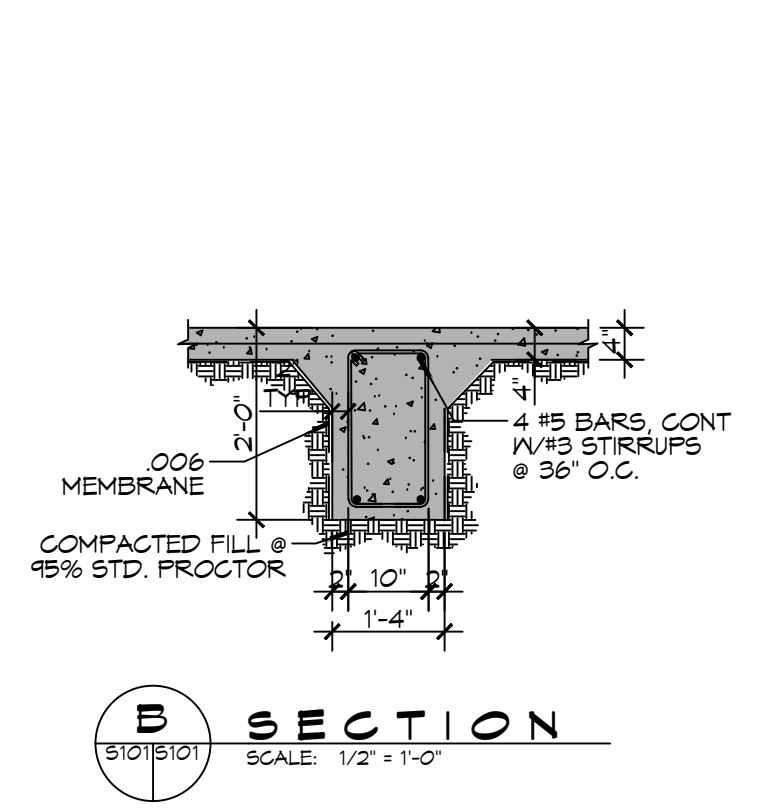
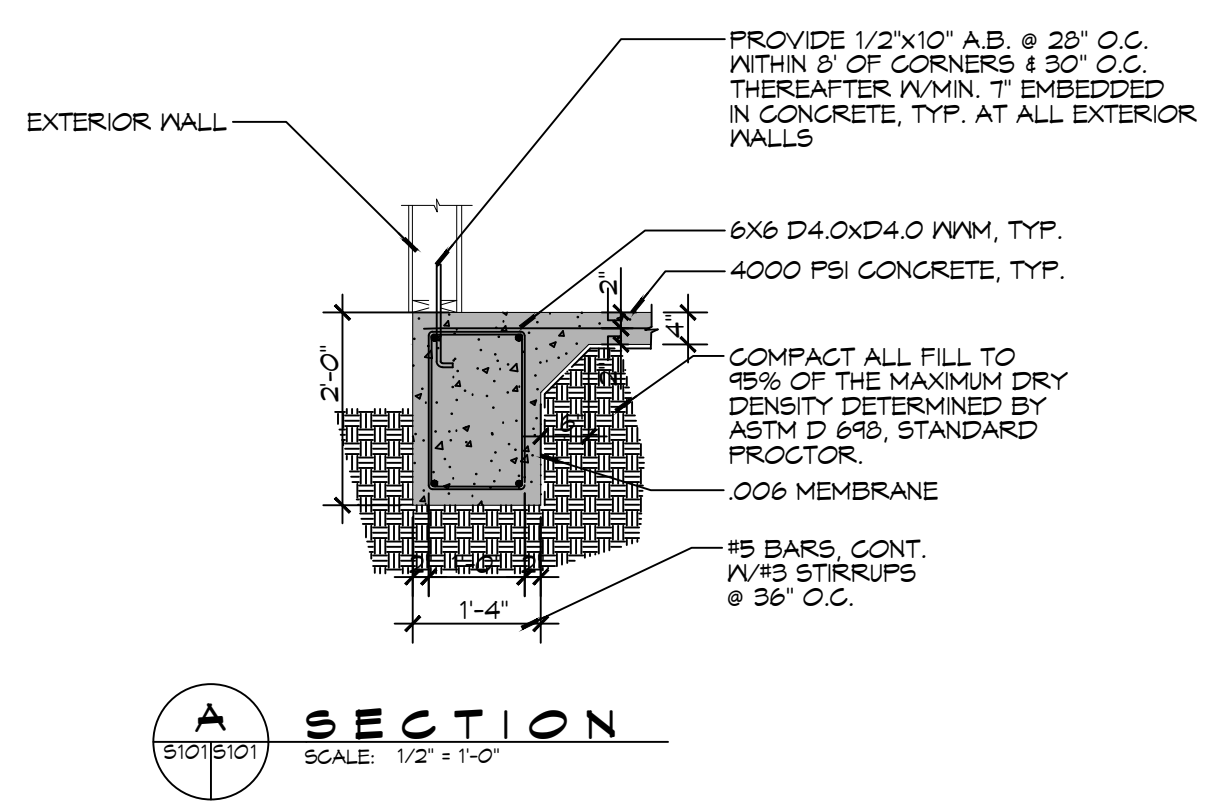
6410 HUKO COURT
DIAMONDHEAD MS 39525
JOB No: 06-04-2022
DATE: 06-04-2022
DRAWN BY: CKD
CHECKED BY: CKD

SHEET TITLE:
SITE PLAN

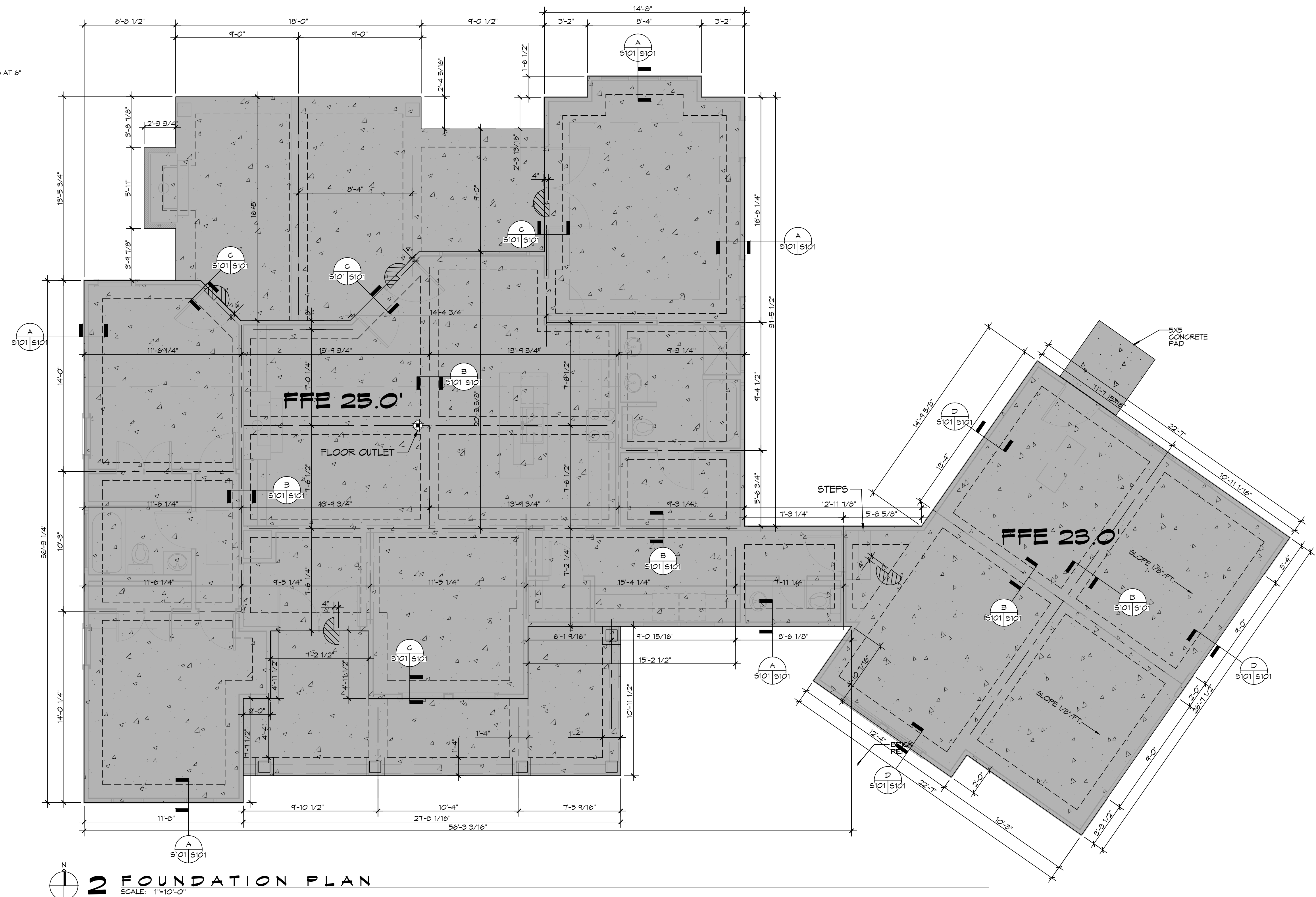
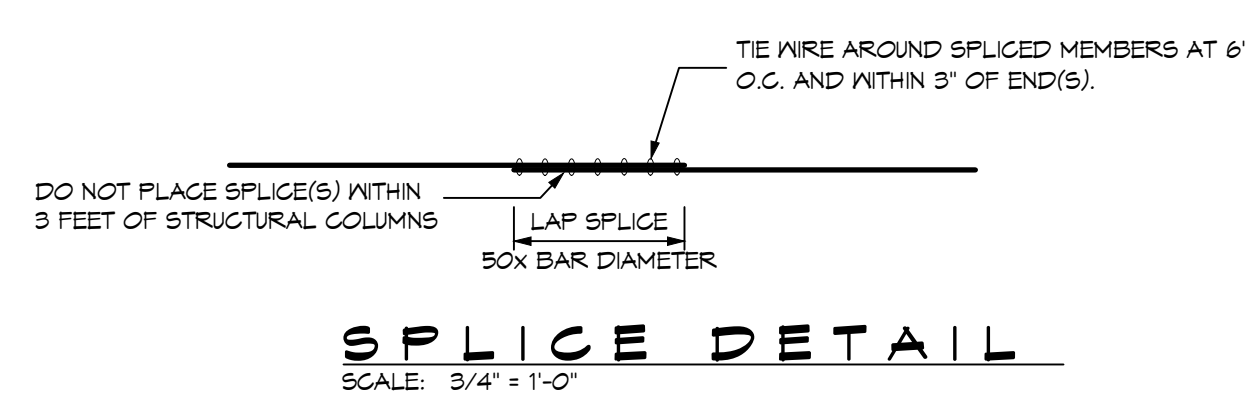
DRAWING NUMBER:
C101

SHEET No: 1 of 10

DATE: 06-04-2022
 PROJECT: 6410 HMC COURT, DIARONHEAD, MS 39225
 DRAWN BY: RLD
 CHECKED BY: CKD
 DATE: 06-04-2022
 PROJECT: 6410 HMC COURT, DIARONHEAD, MS 39225
 DRAWN BY: RLD
 CHECKED BY: CKD



- ### GENERAL FOUNDATION NOTES
- ALL DIMENSIONS ARE EDGE OF CONCRETE (EOC) TO EDGE OF CONCRETE (EOC) UNLESS NOTED OTHERWISE.
 - VERIFY ALL PLUMBING ROUGH-IN LOCATIONS ON ARCHITECTURAL DINGS.
 - CONCRETE MIX SHALL HAVE A MINIMUM COMPRESSIVE STRENGTH OF 4000 PSI AT 28 DAYS. CONCRETE MIX SHALL BE IN ACCORDANCE WITH ACI-318.
 - ALL CONVENTIONAL REINFORCING STEEL SHALL MEET ASTM-A615 (GRADE 60).
 - ONE LAYER OF POLYETHYLENE VAPOR BARRIER SHALL BE PLACED UNDER ALL CONCRETE. VAPOR RETARDER TO BE MINIMUM 10 MIL THICKNESS; ASTM E 1745 CLASS A, PERMEANCE LESS THAN 0.01 PERMS, EQUAL TO STEGO INDUSTRIES STEGO VAPOR, ECOSHIELD-E 15 MIL BY EPIC, OR RONBAR 15 BY FLATIRON FILMS. PROVIDE APPROPRIATE ACCESSORIES FOR A COMPLETE SYSTEM.
 - ALL REINFORCING STEEL AND MESH SHALL BE SECURELY SUPPORTED TO PREVENT BOTH VERTICAL AND HORIZONTAL MOVEMENT DURING CONCRETE PLACEMENT.
 - THE CONTRACTOR SHALL VERIFY ALL DROPS, OFFSETS, BRICK LEDGES, DIMENSIONS AND CONFIGURATIONS. CONTRACTOR MUST BE RESPONSIBLE FOR SAME. SEE ARCHITECTURAL DRAWINGS FORMSETTER PLAN SHEET 9 OF 9.
 - GRADE BEAM DIMENSIONS MAY VARY BY -5%, +20%.
 - NEW SPREAD CONCRETE FOOTINGS AND CONTINUOUS FOOTINGS, BEARING ON COMPACTED STRUCTURAL FILL, SHOULD BE DESIGNED FOR MINIMUM NET ALLOWABLE BEARING PRESSURES OF 1200 PSF AND 2000 PSF, RESPECTIVELY, BASED ON DEAD LOADS AND DESIGN LIVE LOADS.
 - ALL SOIL BELOW SLAB SHALL RECEIVE TERMITE TREATMENT.



2 FOUNDATION PLAN
 SCALE: 1"=10'-0"

DAMMON ENGINEERING, INC.
 LOUISIANA & MISSISSIPPI
 Chief Engineer: Brian A. Mistich, PE
 554 Old Spanish Trail
 Slidell, LA 70458
 www.dammonengineering.com
 info@dammonengineering.com
 PH: 985-649-5832

#	DESCRIPTION	DATE



NEW RESIDENTIAL
CRAIG BERGERON
 6410 HMC COURT
 DIARONHEAD, MS 39225
 JOB No: 2022-06-04
 DRAWN BY: RLD
 CHECKED BY: CKD
 DATE: 06-04-2022

SHEET TITLE:
FOUNDATION PLAN AND DETAILS
 DRAWING NUMBER:
S101
 SHEET No: 2 of 10

TABLE S107.7 - UPLIFT CONNECTIONS - 130 MPH WINDS EXP "C"
WFCM 2015 TABLE 3.2

CONNECTION	FRAMING SPACING (INCHES)	ROOF SPAN (FEET)	UPLIFT	LATERAL	SHEAR	NUMBER OF 8d COMMON NAILS OR 10d BOX NAILS IN EACH END OF 1-1/4" X 20 GAGE STRAP
ROOF ASSEMBLY TO WALL ASSEMBLY	16" OC	16	40T	292	152R	4
WALL ASSEMBLY TO FOUNDATION	16" OC	16	224	219	436	4

TABLE S107.8 - SILL OR BOTTOM PLATE TO FOUNDATION CONNECTIONS RESISTING UPLIFT LOADS - 130 MPH WIND EXP "C"
WFCM 2015 TABLE 3.2C

BOTTOM PLATE TO FOUNDATION ANCHOR BOLT CONNECTION RESISTING	FOUNDATION SUPPORTING	MAXIMUM ANCHOR BOLT SPACING (INCHES)	
		8' END ZONES	INTERIOR ZONES
UPLIFT LOADS	1 - 3 STORIES	25 INCHES ON CENTER	30 INCHES ON CENTER

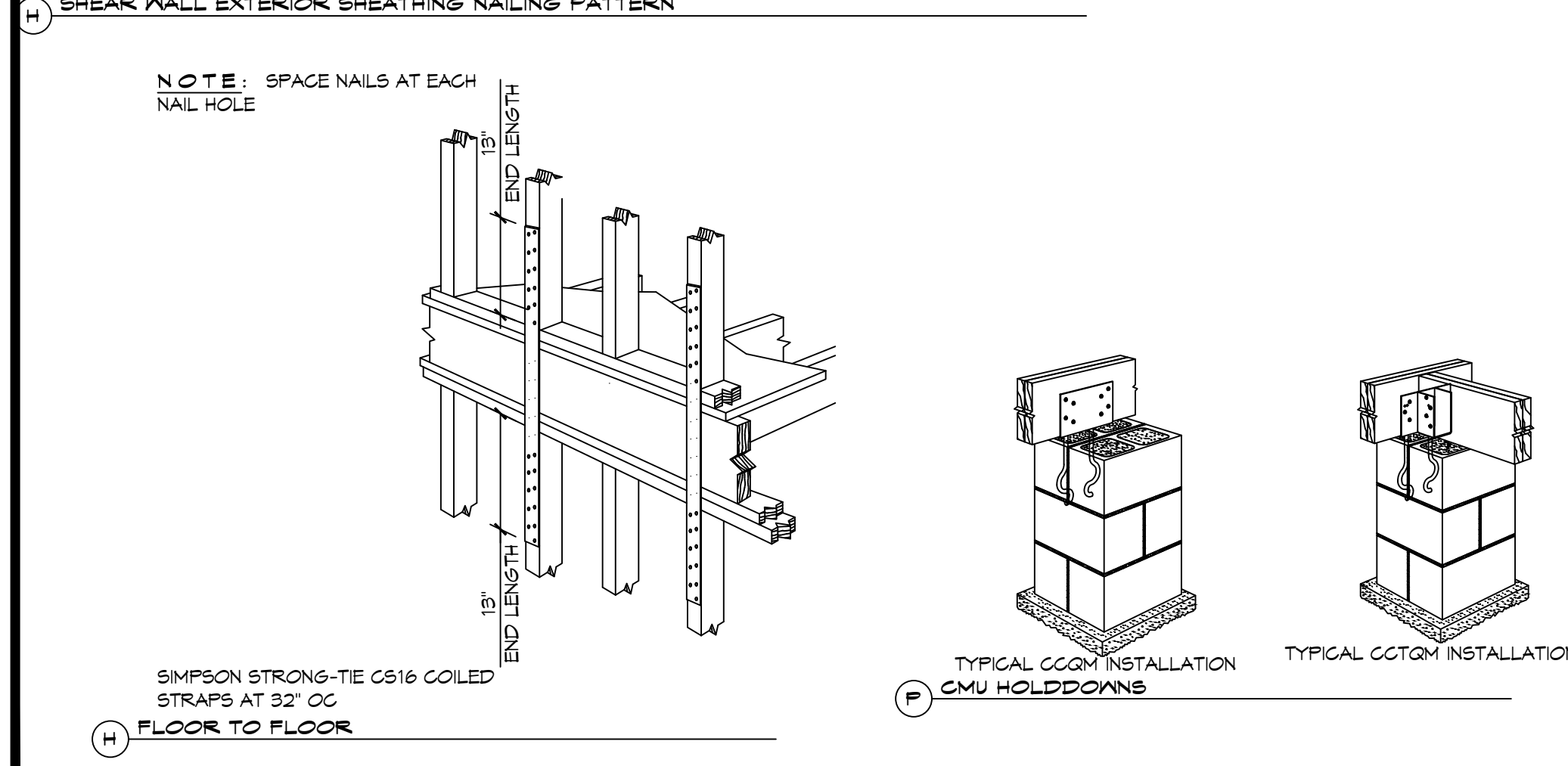
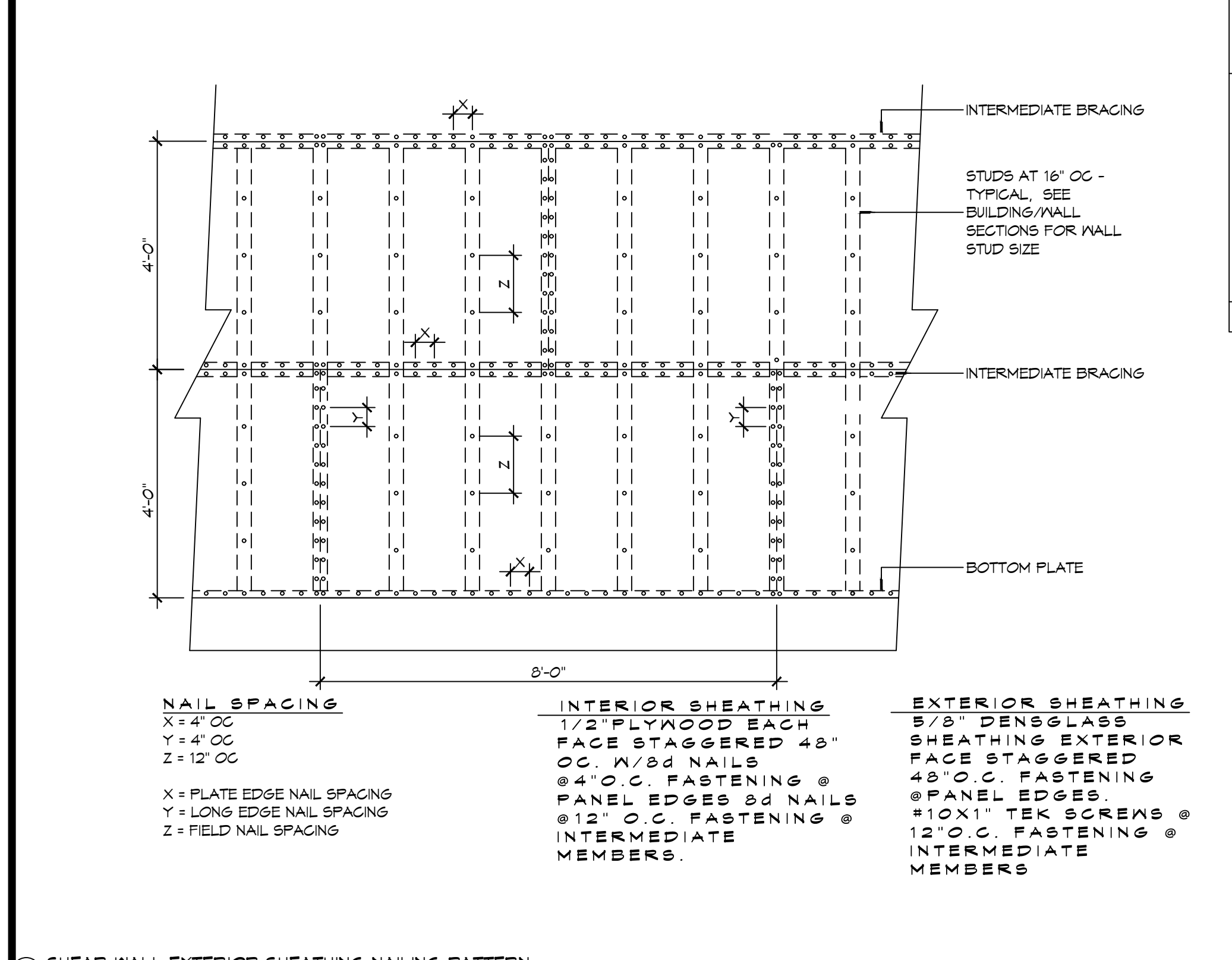
NOTE: A MINIMUM OF ONE ANCHOR BOLT SHALL BE PROVIDED WITHIN 6 TO 12 INCHES OF EACH END OF EACH PLATE

TABLE S107.9 - SILL OR BOTTOM PLATE TO FOUNDATION CONNECTIONS RESISTING SHEAR LOADS - 130 MPH WIND EXP "C"
WFCM 2015 TABLE 3.2B

BOTTOM PLATE TO FOUNDATION ANCHOR BOLT CONNECTION RESISTING	FOUNDATION SUPPORTING	MAXIMUM ANCHOR BOLT SPACING (INCHES)	
		5/8" Ø ANCHOR BOLTS	5/8" Ø ANCHOR BOLTS
UPLIFT LOADS	4 STORY	48 INCHES ON CENTER W/3X3X1/4" W/ASHER	

TABLE S107.10 - FULL HEIGHT STUD REQUIREMENT FOR HEADERS OR WINDOW SILL PLATES IN EXTERIOR WALLS EXPOSURE "C"
WFCM 2015 TABLE 3.23C

HEADER SPAN (FEET)	WALL SPACING (INCHES)		
	12" O.C.	16" O.C.	24" O.C.
2	1	1	1
4	2	2	1
6	3	3	2
8	4	3	2



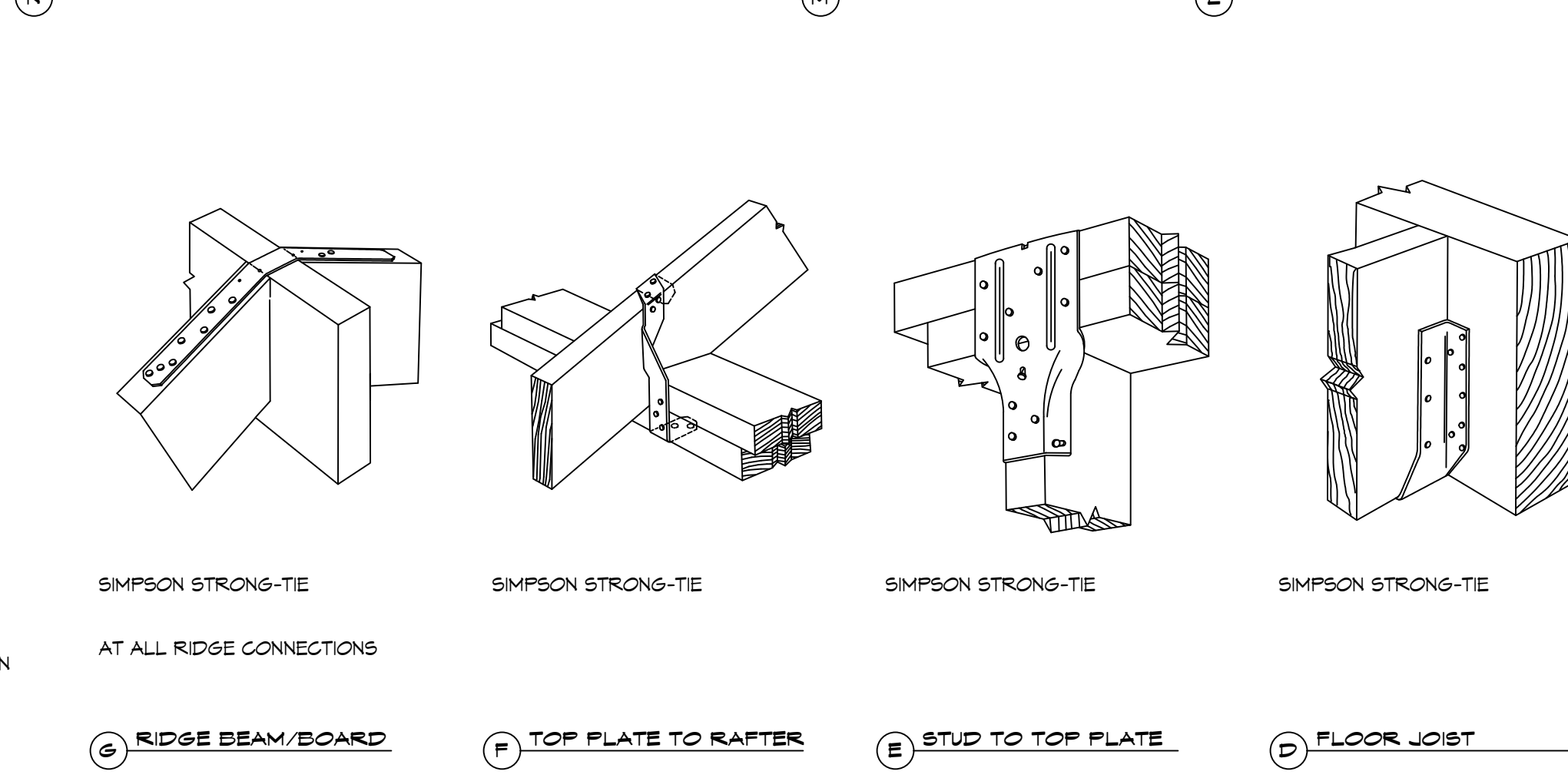
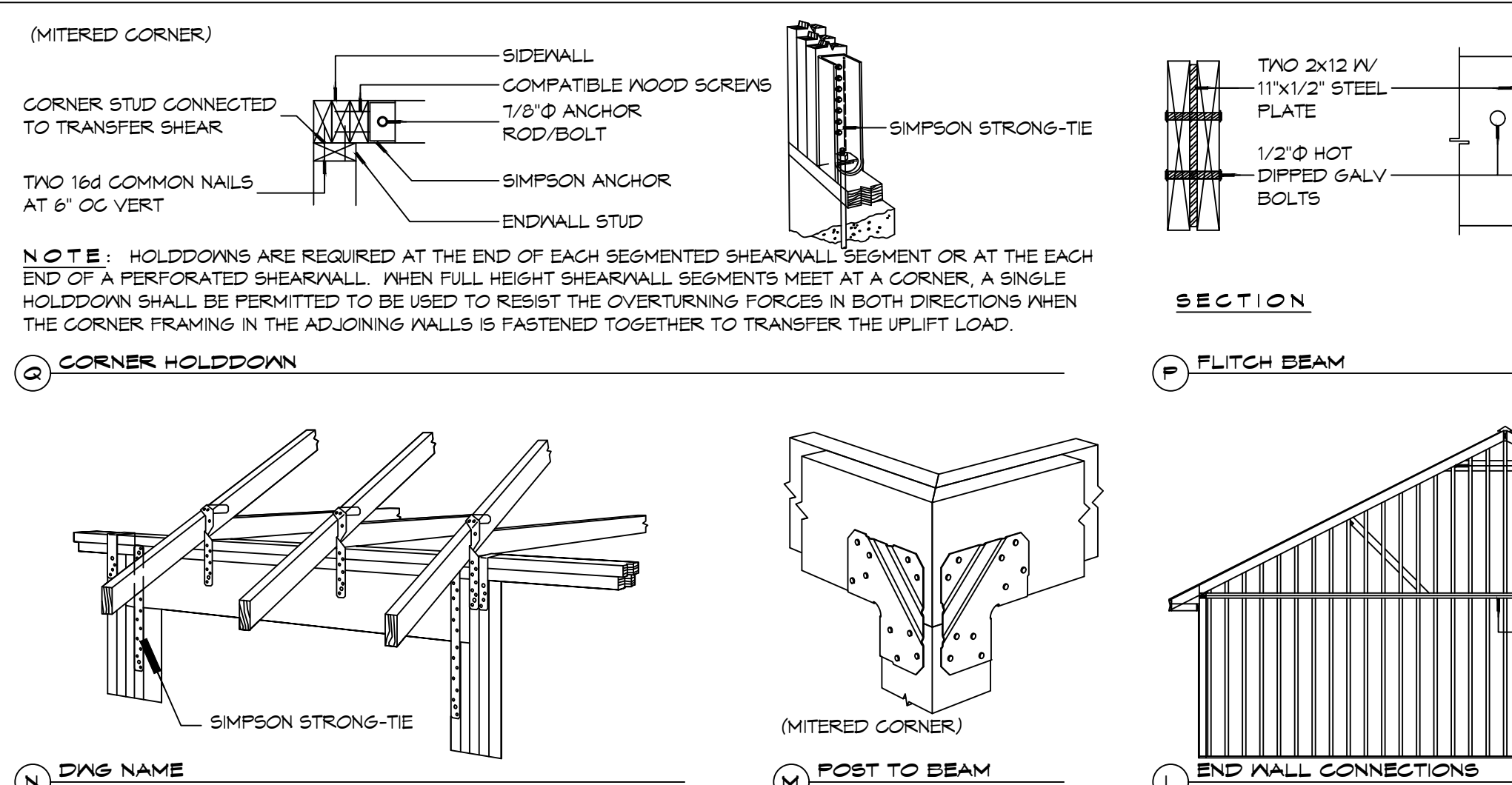
TYPICAL CONNECTION DETAILS
SCALE: N.T.S.

TABLE S107.5 - JACK STUD REQ - INT LOADBEARING WALLS

HEADER SUPPORTING	HEADER SPAN (FT)	ROOF SPAN (FEET)											
		12 FEET				24 FEET				36 FEET			
		HEADER WIDTH											
		3"	4.5"	5"	6.5"	3"	4.5"	5"	6.5"	3"	4.5"	5"	6"
ONE FLOOR ONLY (CENTER BEARING)	2	1	1	1	1	1	1	1	1	1	1	1	1
	4	1	1	1	1	1	1	1	1	1	1	1	1
	6	1	1	1	1	1	1	1	1	2	1	1	1
	8	1	1	1	1	2	1	1	1	2	2	2	1
	10	1	1	1	1	2	2	1	1	3	2	2	2
	12	1	1	1	1	2	2	2	1	3	2	2	2
TWO FLOORS (CENTER BEARING)	2	1	1	1	1	1	1	1	1	2	1	1	1
	4	1	1	1	1	2	1	1	1	3	2	2	2
	6	2	1	1	1	3	2	2	2	4	3	2	2
	8	2	2	1	1	3	2	2	2	5	3	3	3
	10	2	2	2	1	4	3	3	2	6	4	4	3
	12	3	2	2	2	5	3	3	3	7	5	4	4
14	3	2	2	2	6	4	4	3	8	5	5	4	
16	4	3	2	2	6	4	4	3	9	6	6	5	

TABLE S107.6 - JACK STUD REQ - EXTERIOR LOADBEARING WALLS
WFCM 2015 TABLE 3.22F

		ROOF LIVE LOAD 20 PSF				ROOF LIVE LOAD 30 PSF				
		3"	4.5"	5"	6.5"	3"	4.5"	5"	6.5"	
		NUMBER OF JACK STUDS REQUIRED								
ROOF AND CEILING	2	1	1	1	1	1	1	1	1	1
	4	1	1	1	1	1	1	1	1	1
	6	2	1	1	1	2	1	1	1	1
	8	2	2	2	1	2	2	2	2	1
	10	3	2	2	2	3	2	2	2	2
	12	3	2	2	2	3	2	2	2	2
ROOF, CEILING, AND ONE CENTER BEARING FLOOR	2	1	1	1	1	1	1	1	1	1
	4	2	1	1	1	2	1	1	1	1
	6	2	2	2	1	3	2	2	2	2
	8	3	2	2	2	3	2	2	2	2
	10	4	3	2	2	4	3	3	2	2
	12	4	3	3	2	5	3	3	3	3
14	5	4	3	3	5	4	3	3	3	
16	6	4	4	3	6	4	4	3	3	



TYPICAL CONNECTION DETAILS

TABLE S107.3 - NAILING SCHEDULE
WFCM 2015 TABLE 3.1

DESCRIPTION	NUMBER OF COMMON NAILS	NUMBER OF BOX NAILS	SPACING
HEADER TO HEADER (FACE NAILED)	16d	16d	16" OC EDGES

TABLE S107.4 - BUILDING ENVELOPE REQUIREMENTS

ROOFS	OPAQUE ELEMENTS	ASSEMBLY MAXIMUM	INSULATION MIN. R-VALUE
ROOFS	INSULATION ENTIRELY ABOVE DECK	U-0.040	R-20.0 c.i.
	METAL BUILDING	U-0.065	R-19
	ATTIC AND OTHER	U-0.027	R-30
WALLS, ABOVE GRADE	MASS	U-0.151	R-5.7 c.i.
	METAL BUILDING	U-0.113	R-19.0
	STEEL-FRAMED	U-0.124	R-19.0
FLOORS	WOOD-FRAMED AND OTHER	U-0.089	R-19.0
	MASS	U-0.107	R-8.3 c.i.
	STEEL JOIST	U-0.052	R-19.0
SLAB-ON-GRADE	UN-HEATED	F-0.750	NR
	OPAKE DOORS	SWINGING	U-0.700 NR
	NON-SWINGING	U-1.450 NR	

ROOF UNDERLAYMENT NOTES

- FOR ROOF SLOPES FROM TWO UNITS VERTICAL IN 12 UNITS HORIZONTAL (17-PERCENT SLOPE), UP TO FOUR UNITS VERTICAL IN 12 UNITS HORIZONTAL (33-PERCENT SLOPE), UNDERLAYMENT SHALL BE TWO LAYERS APPLIED IN THE FOLLOWING MANNER:
 - APPLY A 19 INCH STRIP OF UNDERLAYMENT FELT PARALLEL WITH AND STARTING AT THE EAVES, FASTENED SUFFICIENTLY TO HOLD IN PLACE. STARTING AT THE EAVE, APPLY 36 INCH WIDE SHEETS OF UNDERLAYMENT, OVERLAPPING SUCCESSIVE SHEETS 19 INCHES, AND FASTENED SUFFICIENTLY TO HOLD IN PLACE.
- FOR ROOF SLOPES OF FOUR UNITS VERTICAL IN 12 UNITS HORIZONTAL (33-PERCENT SLOPE) OR GREATER, UNDERLAYMENT SHALL BE ONE LAYER APPLIED IN THE FOLLOWING MANNER:
 - UNDERLAYMENT SHALL BE APPLIED SHINGLE FASHION, PARALLEL TO AND STARTING FROM THE EAVE AND LAPPED 2 INCHES, FASTENED SUFFICIENTLY TO HOLD IN PLACE. END LAPS SHALL BE OFFSET BY 6 FEET.

ROOF APPLICATION & FASTENING NOTES

- INSTALL ROOF PER MANUFACTURERS RECOMMENDATIONS FOR 130MPH WIND SPEED.

GENERAL UPLIFT CONNECTION NOTES

ROOF ASSEMBLY TO WALL ASSEMBLY:
UPLIFT CONNECTIONS SHALL BE FROM RAFTER OR TRUSS TO WALL STUD. WHEN RAFTERS OR TRUSSES ARE NOT LOCATED DIRECTLY ABOVE STUDS, RAFTERS SHALL BE ATTACHED TO THE WALL PLATE AND THE WALL TOP PLATE SHALL BE ATTACHED TO THE WALL STUD WITH UPLIFT CONNECTIONS.

WALL ASSEMBLY TO WALL ASSEMBLY:
STORY TO STORY UPLIFT CONNECTIONS FROM UPPER STORY WALL STUD TO LOWER STORY WALL STUD. WHEN UPPER STORY WALL STUDS ARE NOT LOCATED DIRECTLY ABOVE LOWER WALL STUDS, THE STUDS SHALL BE ATTACHED TO A COMMON MEMBER IN THE FLOOR ASSEMBLY BY UPLIFT CONNECTIONS.

WALL ASSEMBLY TO FOUNDATION:
FIRST FLOOR WALL STUDS SHALL BE CONNECTED TO THE FOUNDATION, SILL, PLATE, OR BOTTOM PLATE. A MINIMUM OF A 1-1/4" X 20 GA. ASTM A653 GRADE 33 STEEL STRAP SHALL BE NAILED TO THE WALL STUDS AND HAVE A MINIMUM EMBEDMENT OF 7 INCHES IN CONCRETE FOUNDATIONS AND SLABS-ON-GRADE, 15 INCHES IN MASONRY BLOCK FOUNDATIONS, OR BE LAPPED UNDER THE BOTTOM PLATE. 3 INCH SQUARE WASHERS SHALL BE USED ON THE ANCHOR BOLTS AND ANCHOR BOLT SPACINGS SHALL NOT EXCEED THE REQUIREMENTS. STEEL STRAPS EMBEDDED IN OR IN CONTACT WITH SLAB-ON-GRADE OR MASONRY BLOCK FOUNDATIONS SHALL BE HOT-DIPPED GALV. AFTER FABRICATION, OR MANUF. FROM G105 OR Z450 GALV. STL.

TABLE S107.1 - ROOF SHEATHING OR CLADDING REQUIREMENT - WIND LOAD EXP "C"

SHEATHING LOCATION	RAFTER / TRUSS SPACING	E		F	
		MAX NAIL SPACING FOR 8d COMMON NAILS OR 10d BOX NAILS (INCHES OC)			
INTERIOR ZONE	12" OC	6	12		
	16" OC	6	12		
	24" OC	6	6		
PERIMETER EDGE ZONE	12" OC	6	6		
	16" OC	4	4		
	24" OC	3	3		

130 MPH WIND - EXPOSURE 'C' TYPICAL.
E = NAIL SPACING AT PANEL EDGES, INCHES.
F = NAIL SPACING AT INTERMEDIATE SUPPORTS IN THE PANEL FIELD, INCHES.

DESIGN CRITERIA

THE CONSTRUCTION FOR SAID RESIDENCE, WHERE BASIC WIND SPEED IS 130 MILES PER HOUR, WIND EXPOSURE ZONE C, IS DESIGNED IN ACCORDANCE WITH: AMERICAN FOREST AND PAPER ASSOCIATION (AF&PA) WOOD FRAME CONSTRUCTION MANUAL FOR ONE AND TWO FAMILY DWELLINGS (WFCM) 2015 EDITION AS WELL AS THE INTERNATIONAL RESIDENTIAL CODE (IRC) 2015 EDITION

DAMMON ENGINEERING, INC.
LOUISIANA & MISSISSIPPI

Chief Engineer: Brian A. Mistich, PE
554 Old Spanish Trail
Slidell, LA 70688
www.dammonengineering.com
info@dammonengineering.com
PH: 985-649-5832

REVISIONS	DATE	DESCRIPTION

SEAL: **BRIAN A. MISTICH**
ENGINEER
LICENSED PROFESSIONAL
Brian A. Mistich
20971
06-09-2022
STATE OF MISSISSIPPI

CRAIG BERGERON
NEW RESIDENTIAL

6410 HUND COURT
DIAMONDHEAD MS 39525
JOB No: 2022-001
DRAWN BY: CKD
DATE: 06-04-2022
CHECKED BY: CKD

SHEET TITLE:
TYPICAL CONNECTION
DETAILS, SCHEDULES, AND
NOTES

DRAWING NUMBER:
S102

SHEET No: 3 of 10

D:\A\101 - RESIDENTIAL\303 Dammon\303 Dammon.dwg
 PLOT DATE: 06-04-2022 10:48:32 AM
 User: bhamon

WINDOW SCHEDULE

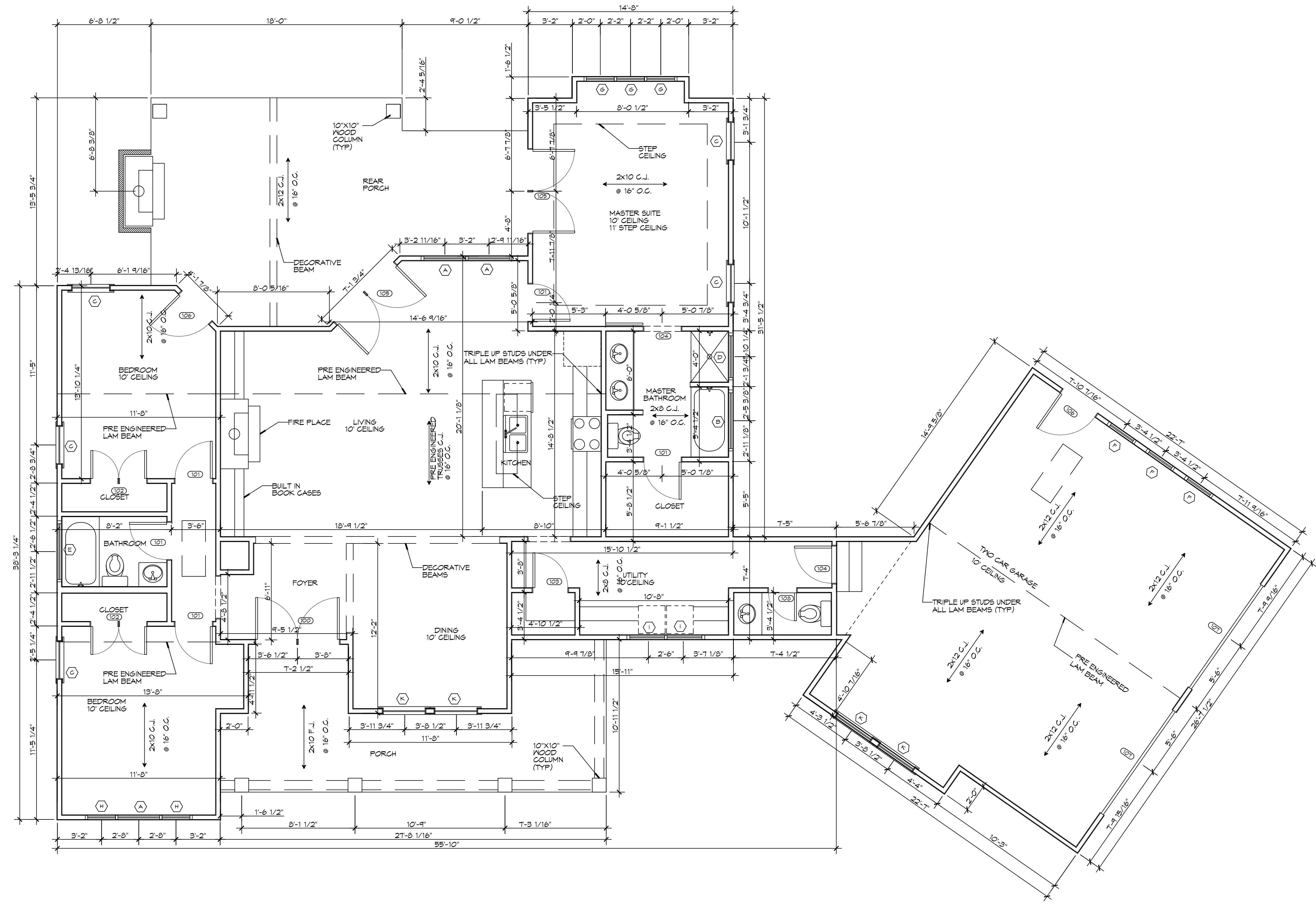
MK	SIZE	FRAME	TYPE	REMARKS
A	3'-0" W x 6'-0" H	FIBERGLASS	OPERABLE	DOUBLE HUNG
B	4'-0" W x 5'-6" H	FIBERGLASS	FIXED	PICTURE WINDOW
C	2'-8" W x 5'-6" H	FIBERGLASS	OPERABLE	DOUBLE HUNG
D	3'-0" W x 1'-4" H	FIBERGLASS	FIXED	TRANSOM WINDOW
E	4'-0" W x 1'-4" H	FIBERGLASS	FIXED	TRANSOM WINDOW
F	2'-0" W x 2'-0" H	FIBERGLASS	FIXED	PICTURE WINDOW, *SEE ELEVATIONS
G	2'-0" W x 5'-6" H	FIBERGLASS	OPERABLE	DOUBLE HUNG
H	2'-0" W x 6'-0" H	FIBERGLASS	OPERABLE	DOUBLE HUNG
I	2'-6" W x 4'-0" H	FIBERGLASS	OPERABLE	DOUBLE HUNG
J	2'-0" W x 4'-0" H	FIBERGLASS	OPERABLE	DOUBLE HUNG, *SEE ELEVATIONS
K	3'-0" W x 5'-6" H	FIBERGLASS	OPERABLE	DOUBLE HUNG
L	2'-0" W x 3'-6" H	FIBERGLASS	OPERABLE	DOUBLE HUNG, *SEE ELEVATIONS

DOOR SCHEDULE

MK	WIDTH	HEIGHT	THK	DOOR MAT	FRAME MAT	REMARKS
100	(2) 3'-0"	8'-0"	1-3/4"	INSUL MTL	MTL	
101	2'-8"	8'-0"	1-3/4"	MASONITE	WOOD	
102	(2) 2'-0"	8'-0"	1-3/4"	MASONITE	WOOD	
103	2'-6"	8'-0"	1-3/4"	MASONITE	WOOD	
104	2'-8"	8'-0"	1-3/4"	MASONITE	WOOD	BARN DOOR
105	(2) 3'-0"	8'-0"	1-3/4"	INSUL MTL	MTL	
106	3'-0"	8'-0"	1-3/4"	INSUL MTL	MTL	
107	(2) 9'-0"	8'-0"	-	MTL	MTL	GARAGE DOOR
108	2'-0"	8'-0"	1-3/4"	INSUL MTL	MTL	

FINISH SCHEDULE

ROOM NAME	FLOOR	BASE	WALL	CEILING	REMARKS
FIRST FLOOR	LAMINATE WOOD	T BASEBOARD	1/2" GYP BD	1/2" GYP BD	
BATHROOMS	CERAMIC	CERAMIC	1/2" GYP BD	1/2" GYP BD	MOISTURE RESISTANT



3 FLOOR PLAN
 SCALE: 1/4"=1'-0"

DAMMON

ENGINEERING, INC.

LOUISIANA & MISSISSIPPI

Chief Engineer: Brian Mistich, PE
 554 Old Spanish Trail
 Slidell, LA 70458
 www.dammonengineering.com
 info@dammonengineering.com
 PH: 985.649.5832

# DESCRIPTION	DATE



NEW RESIDENTIAL

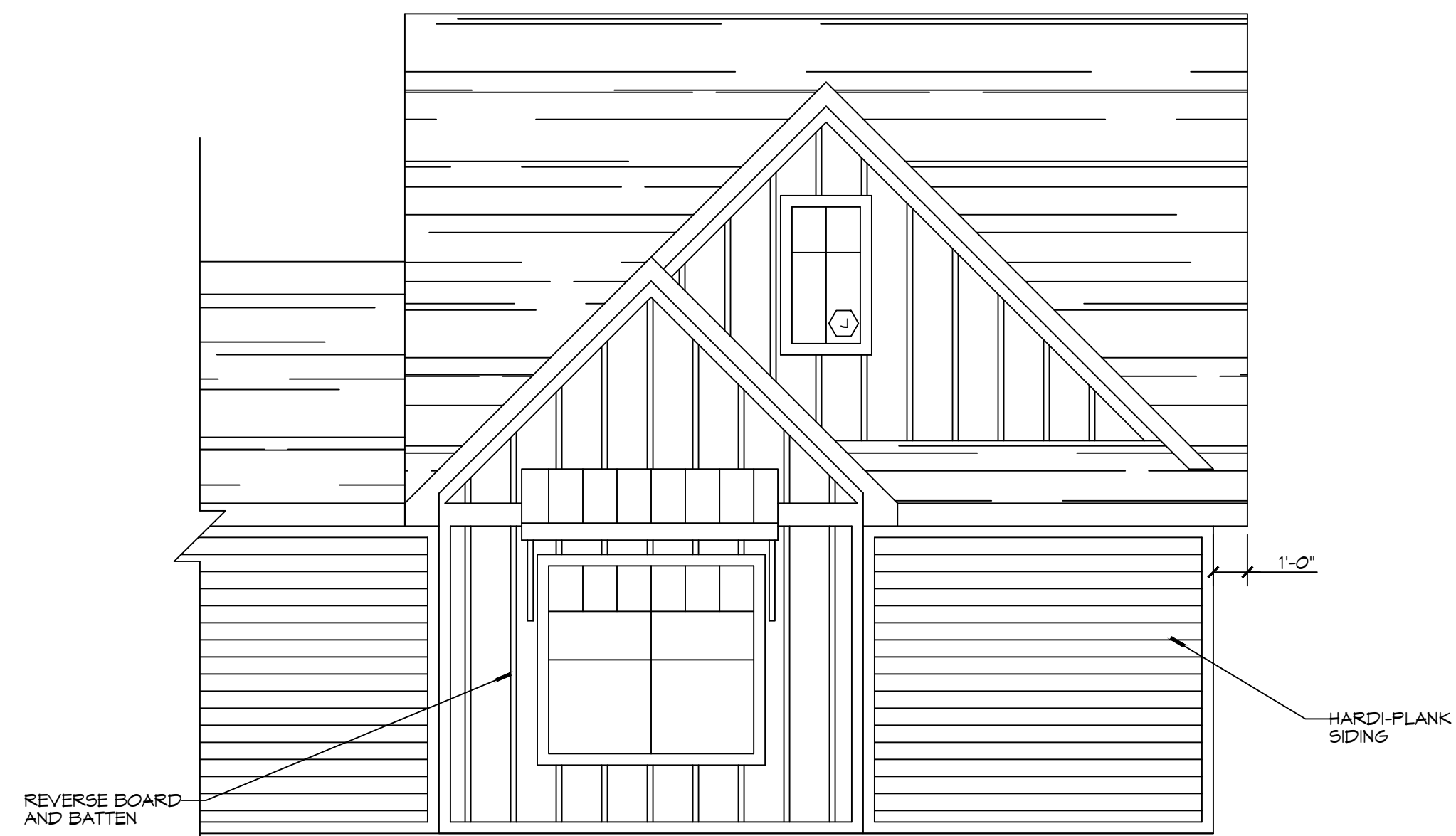
CRAIG BERGERON

6410 HMC COURT
 DUNWOODE MS 39225
 JOB No: 2022-06-04
 DRAWN BY: RLD
 CHECKED BY: CKD
 DATE: 06-04-2022

SHEET TITLE:
 FLOOR PLAN

DRAWING NUMBER:
A101

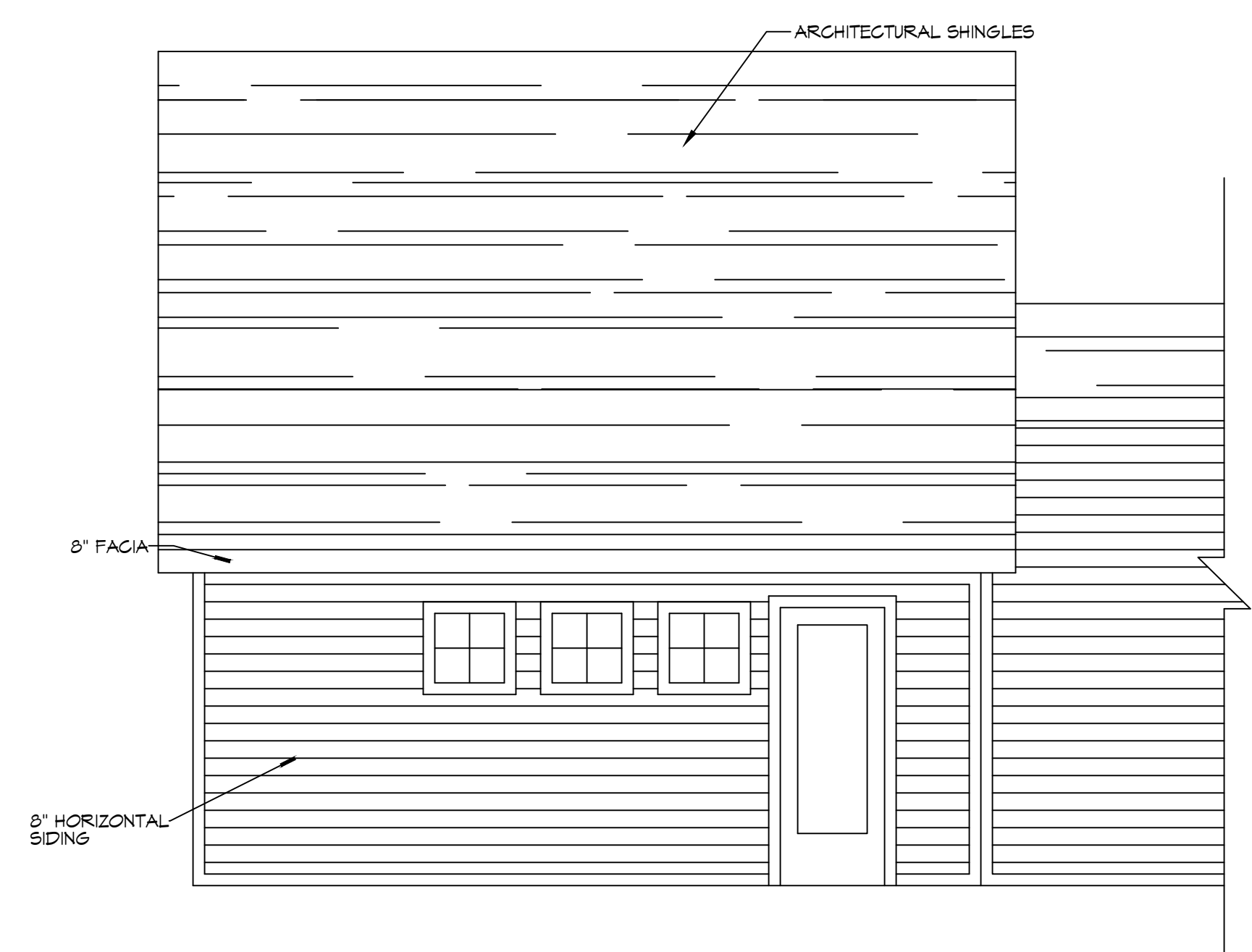
FILE NAME: J:_PROJECTS\2022\New Home\A103 - Garage.dwg DATE: 06-04-2022 10:55:25
 USER: brian.mistich
 PLOT DATE: 06-04-2022 10:55:25
 PLOT USER: brian.mistich



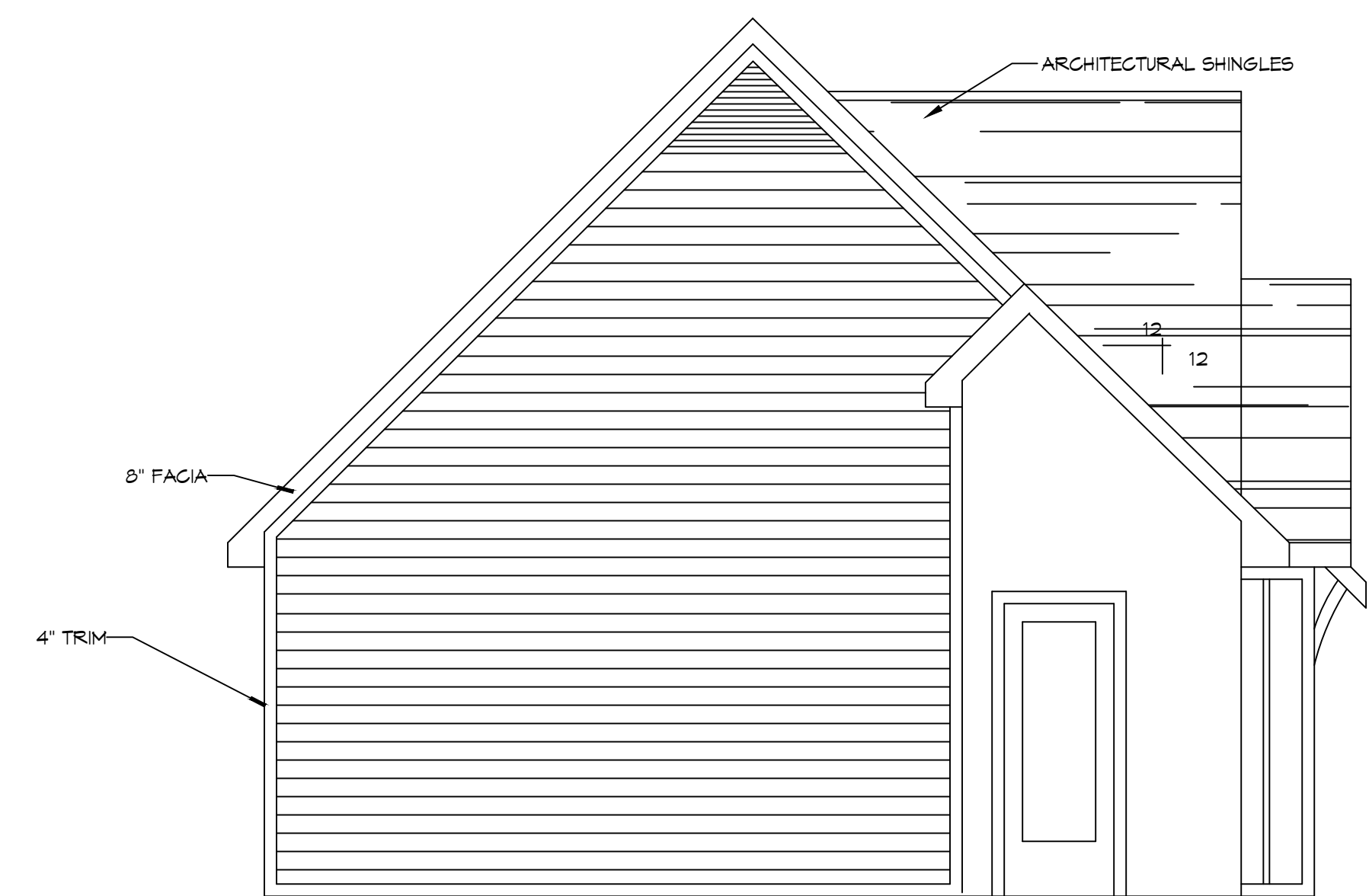
8 FRONT ELEVATION
SCALE: 1/4"=1'-0"



9 SIDE ELEVATION
SCALE: 1/4"=1'-0"



10 REAR ELEVATION
SCALE: 1/4"=1'-0"



11 SIDE ELEVATION
SCALE: 1/4"=1'-0"

DAMMON
ENGINEERING, INC.
 LOUISIANA & MISSISSIPPI
 Chief Engineer: Brian Mistich, PE
 554 Old Spanish Trail
 Slidell, LA 70458
 www.dammonengineering.com
 info@dammonengineering.com
 PH: 985.649.5832

#	DESCRIPTION	DATE

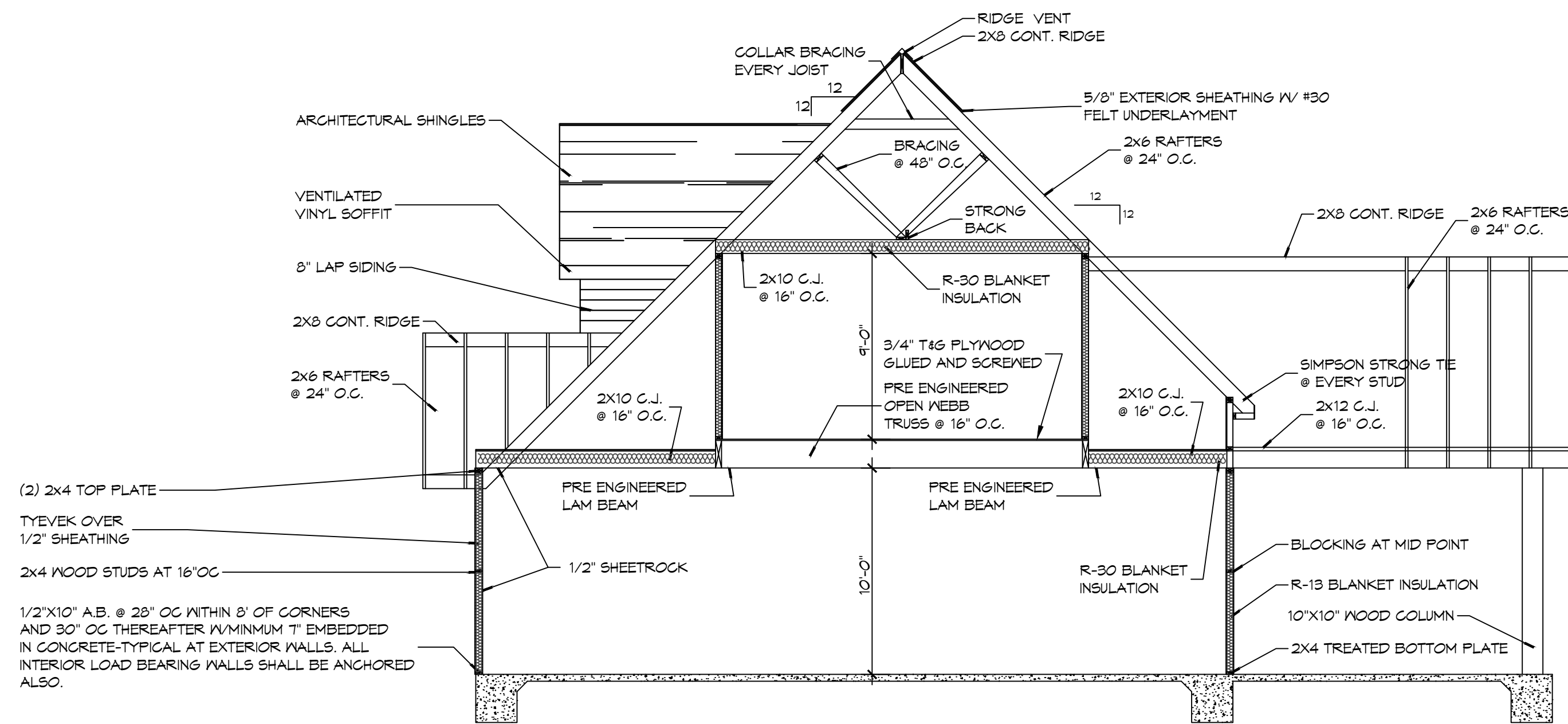


NEW RESIDENTIAL
CRAIG BERGERON
 6410 HUGO COURT
 DUNWOODE, MS 39225
 JOB No: CKD
 DATE: 06-04-2022
 CHECKED BY: CKD

SHEET TITLE:
GARAGE ELEVATIONS

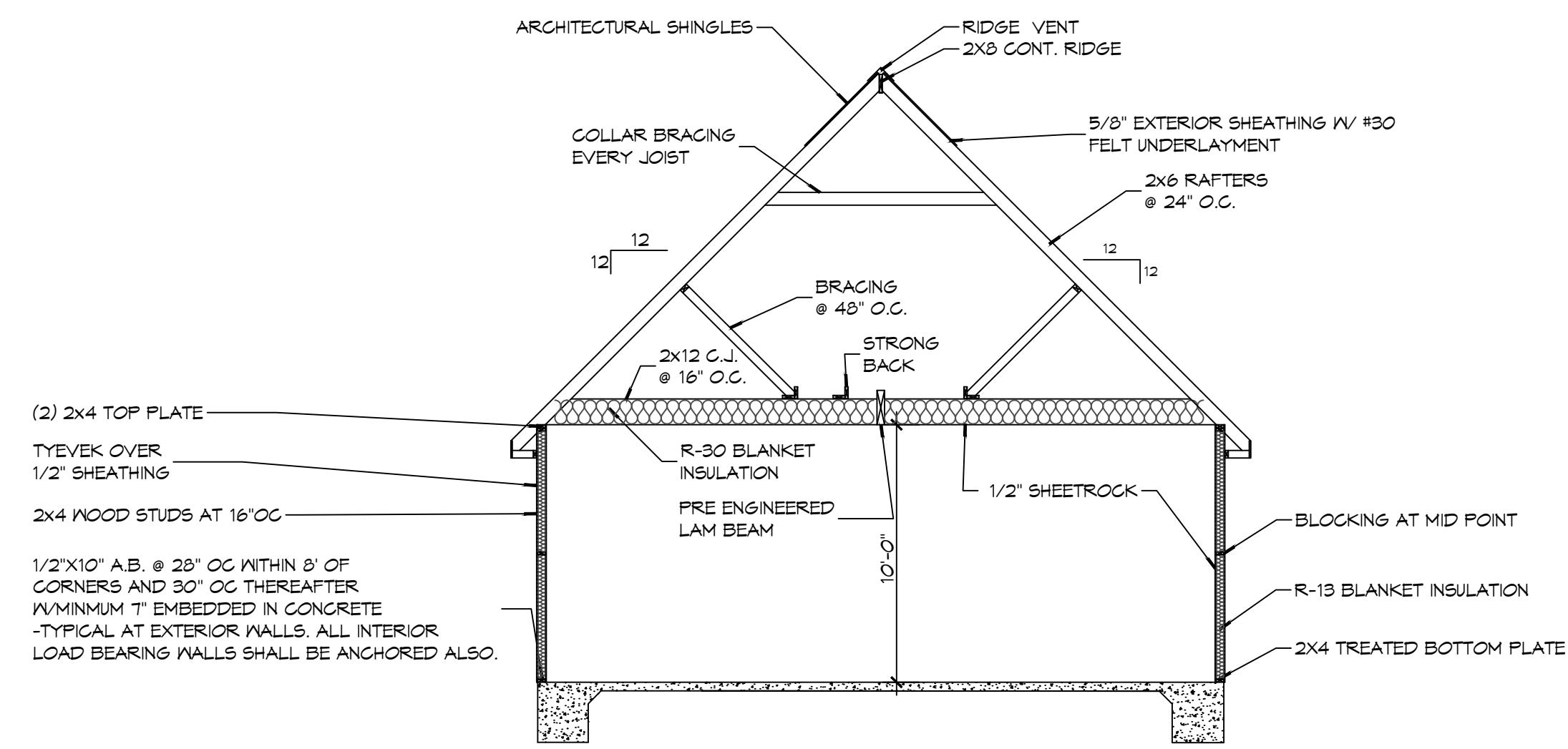
DRAWING NUMBER:
A103

FILE NAME: D:\1 - RESIDENTIAL\04 - BERGERON\04 - BERGERON.dwg DATE: 06-04-2022 10:53:31 AM



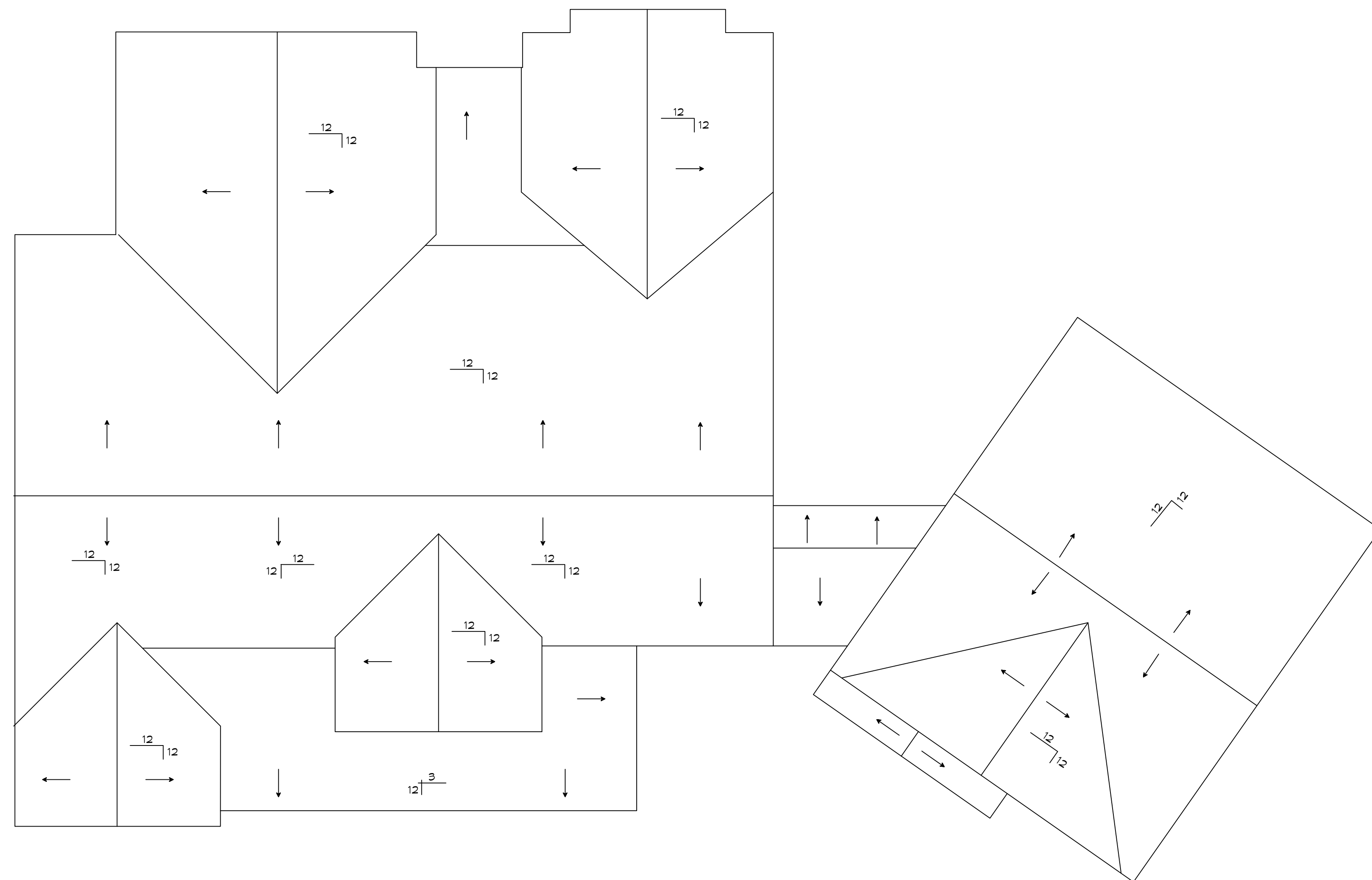
12 TYPICAL HOUSE SECTION

SCALE: 3/16"=1'-0"



13 TYPICAL GARAGE SECTION

SCALE: 3/16"=1'-0"



14 HOUSE ROOF PLAN

SCALE: 3/16"=1'-0"

DAMMON ENGINEERING, INC.
LOUISIANA & MISSISSIPPI
www.dammonengineering.com
info@dammonengineering.com
PH: 985.649.5832
Chief Engineer: Brian Mistich, PE
554 Old Spanish Trail
Slidell, LA 70568

#	DESCRIPTION	DATE



NEW RESIDENTIAL
CRAIG BERGERON
6410 HUGO COURT
DIXONHEAD MS 39225
JOB No: RLD
DATE: 06-04-2022
DRAWN BY: CKD
CHECKED BY: CKD

SHEET TITLE:
HOUSE AND GARAGE
SECTION AND ROOF PLAN

DRAWING NUMBER:

A104

