

**DAMMON**  
ENGINEERING, INC

CHIEF ENGINEER  
EMMETT  
DAMMON, P.E.  
CHIEF ARCHITECT  
ROBERT  
WILTSE

1095 FLORIDA AVENUE  
SLIDELL, LA, 70458  
OFFICE: 985-649-5932  
FAX: 985-641-5950

WEBSITE:  
WWW.DAMMONENGINEERING.COM  
EMAIL:  
DAMMONENG@BELL.SOUTH.NET

ARCHITECTURE  
ENGINEERING  
STUDIES  
PLANNING  
INVESTIGATION  
EXPERT WITNESS

RESTAURANT  
RENOVATION

OSAKA  
287 S. MORRISON BLVD  
HAMMOND, LA

ROOF  
PLAN

REV:

SCALE: AS NOTED

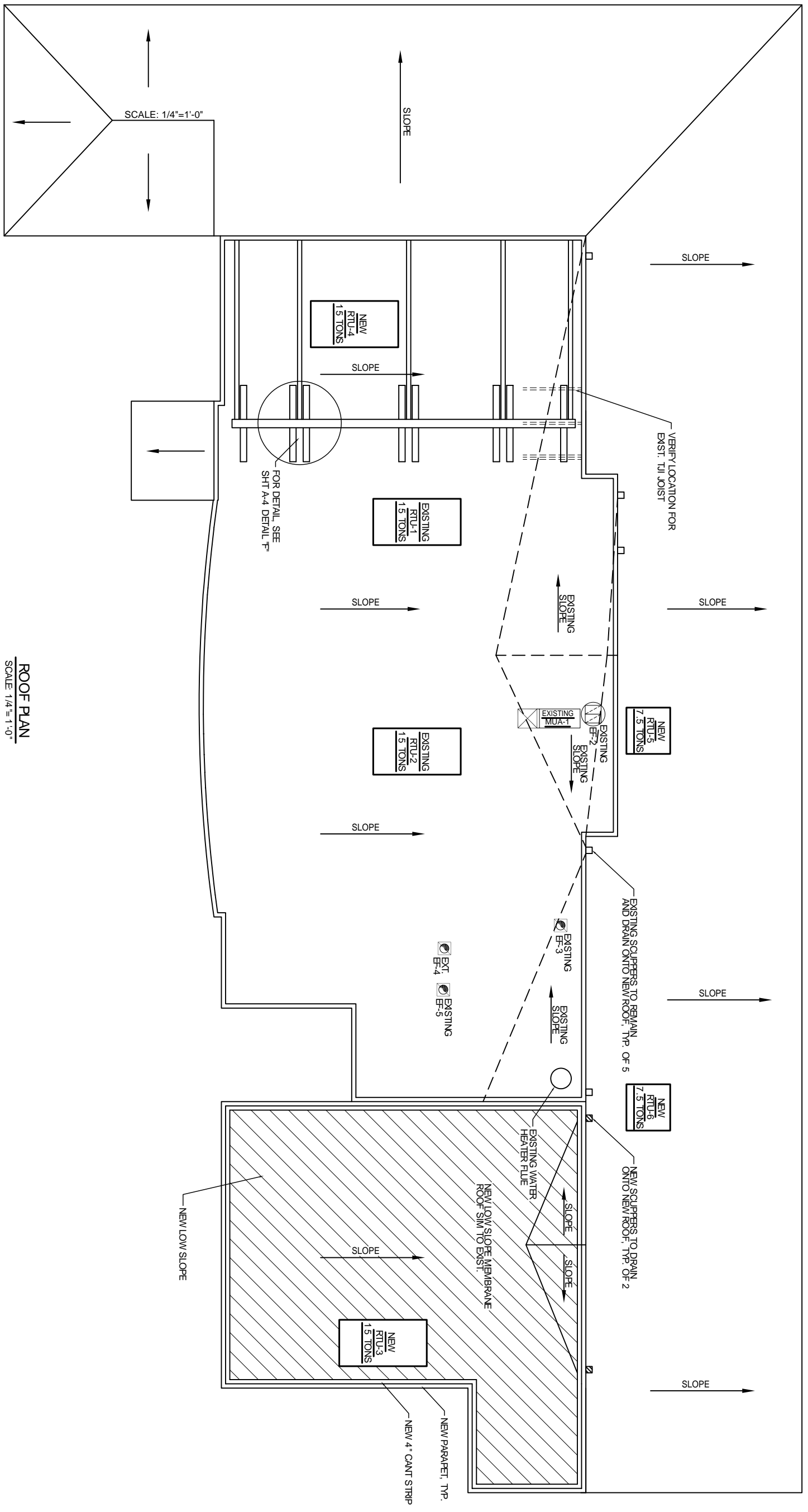
JOB#: 1943

DATE 7-25-08

SHEET 12

A-7

OF 22



ROOF PLAN  
SCALE 1/4"=1'-0"

SCALE: 1/4"=1'-0"