

DAMMON ENGINEERING, INC

CHIEF ENGINEER
EMMETT DAMMON, P.E.
CHIEF ARCHITECT
ROBERT WILTSE

1095 FLORIDA AVENUE
SUDBELL, LA. 70458
OFFICE: 985-649-5832
FAX: 985-641-5950

WEBSITE:
WWW.DAMMONENGINEERING.COM
EMAIL:
DAMMONENG@BELL.SOUTH.NET

ARCHITECTURE
ENGINEERING
STUDIES
PLANNING
INVESTIGATION
EXPERT WITNESS

OSAKA
287 S. MORRISON BLVD
HAMMOND, LA

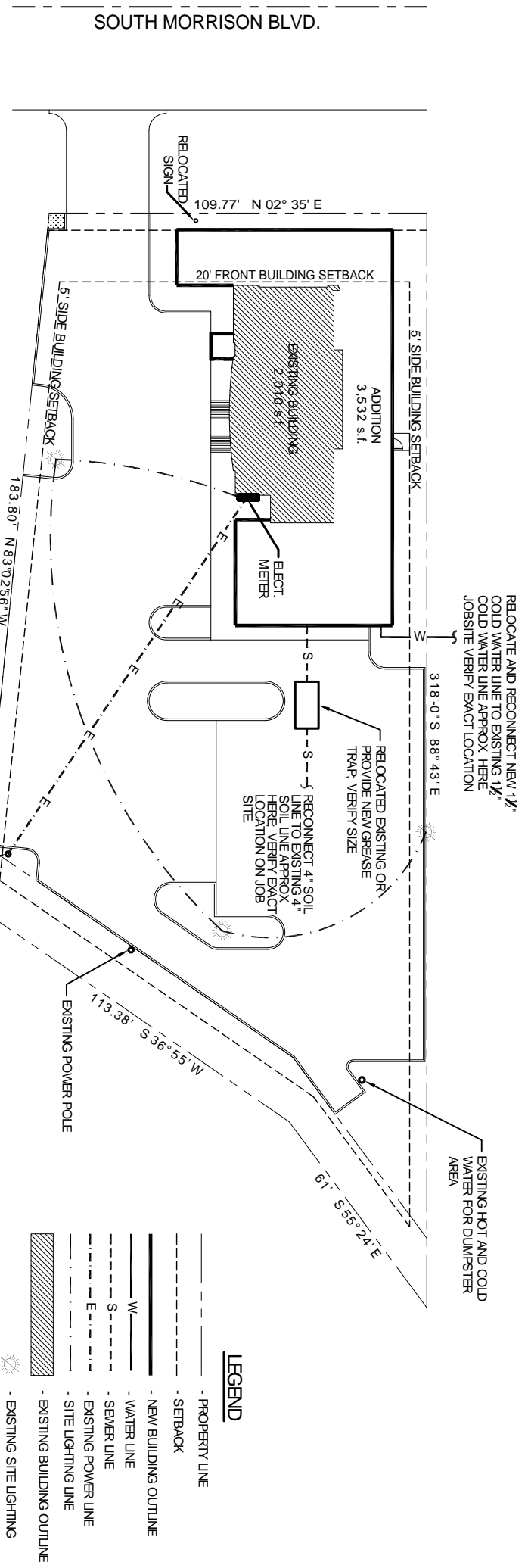
UTILITIES
PLAN

RESTAURANT
RENOVATION

REV:	
SCALE:	AS NOTED
JOB#:	1943
DATE:	7-25-08
SHEET:	3

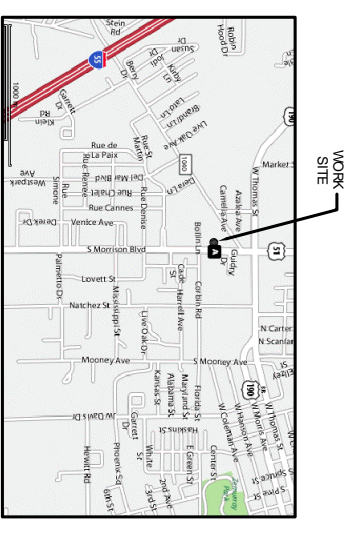
C-2

OF 22



UTILITIES PLAN
SCALE 1" = 20'-0"

ZONED C-3



VICINITY MAP
N.T.S.

