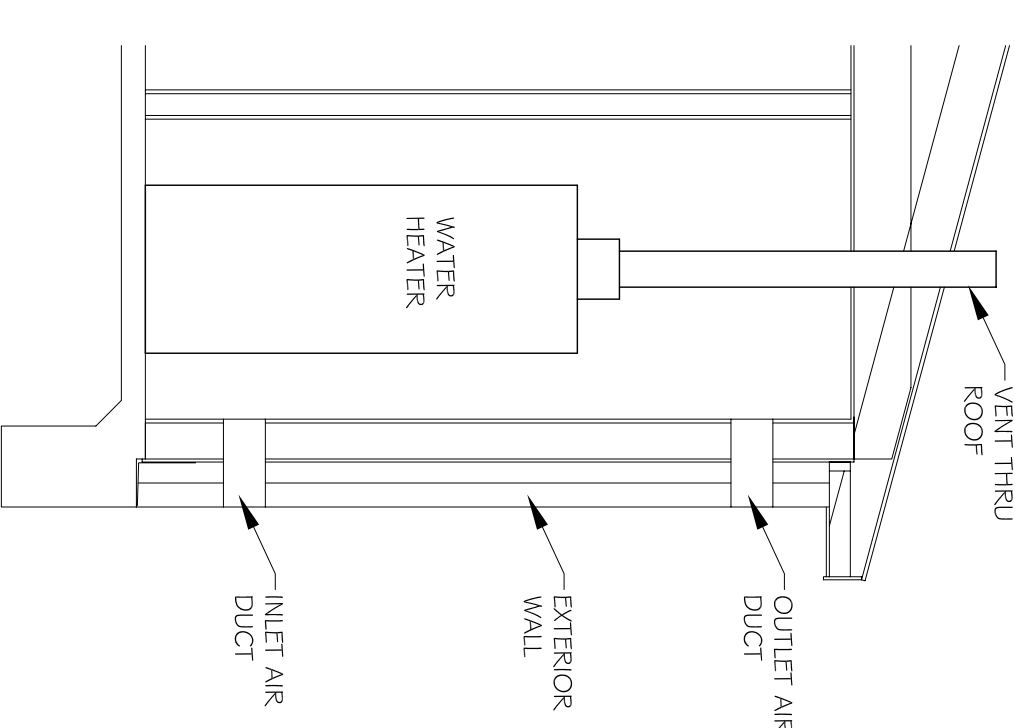


**HVAC NOTES**

1. CONCEALED DUCTWORK TO BE GALVANIZED SHEET METAL LINED WITH NEOPRENE COATED 1.0" THICK, 1.5 POUNDS PER CUBIC FOOT DUCT INSULATION, MIN R-6. INSTALLED PER SMACNA STANDARDS.
2. EXPOSED DUCTWORK TO BE GALVANIZED SHEET METAL LINED WITH NEOPRENE COATED 1.0" THICK, 1.5 POUNDS PER CUBIC FOOT DUCT INSULATION, MIN R-6. INSTALLED PER SMACNA STANDARDS.
3. CONDENSATE & OVERFLOW DRAIN LINES SHALL BE PVC SCH 40 AND SHALL BE INSTALLED WITHIN FIVE FEET OF AIR HANDLING UNITS. DRAINS TO BE RUN TO PLUMBERS P-TAP.
4. COMPLETELY SEPARATE TO SANITARY SEWER. DRAINS TO BE RUN TO PLUMBERS P-TAP.
5. ROUND FLEXIBLE DUCT TO BE UL-181, CLASS 1, AIR DUCT MATERIALS.
6. DUCT SIZES SHOWN ARE CLEAR INSIDE DIMENSIONS.
7. IN ALL SYSTEMS OVER 2000 CFM AND LESS THAN 15,000 CFM, SMOKE DETECTORS SHALL BE INSTALLED IN ACCORDANCE WITH NFPA 72E IN THE RETURN DUCT DOWNSTREAM OF THE AIR HANDLING UNIT AND ALL FILTERS TO AUTOMATICALLY STOP THE FAN.
8. PROVIDE UL LISTED 125°F FRESH AIR RETURN AIR OF EACH SYSTEM UNDER 2000 CFM TO SHUT DOWN THE FAN IN THE EVENT OF FIRE.
9. PROVIDE UL RATED FIRE DAMPERS WHERE REQUIRED AT ALL DUCT PENETRATIONS OF EXTERIOR WALLS AND CEILING. FIRE DAMPERS SHALL BE INSTALLED IN ACCORDANCE WITH NFPA 72E.
10. ALL AIR HANDLING SYSTEMS TO BE BALANCED TO ASSURE PROPER AIR FLOW PER FANS.
11. EXHAUST FAN EQUAL TO ACFE FAN, 11.0 OR EQUAL. FAN SHALL BE CONTROLLED BY A SWITCH ON THE WALL IN THE SAME LOCATION AS LIGHT SWITCHES. PROVIDE BACK DRAFT DAMPERS.
12. PROVIDE AND INSTALL WATER ROOF GRILLE VENT IN PROPER ROOF LOCATION FOR PLUMBING FIXTURE EXHAUST.
13. ALL SUPPLY AIR VENTS SHALL BE EQUIPPED WITH AIR CONTROL DAMPERS.
14. LOCATE OUTDOOR UNITS AS SHOWN ON ARCH. DWGS.
15. REFRIGERANT LINES SHALL BE SIZED BY UNIT MANUFACTURER AND INSTALLED ACCORDING TO MANUFACTURERS' INSTRUCTIONS.
16. EACH AIR HANDLER THROUGH EXTERIOR WALL DUCT SHALL BE SUPPLIED WITH A CONTROL DAMPER.
17. INSTALL FIRE DAMPERS WHERE 5, 4 & 4 A DUCTS PENETRATE 1 HOUR RATED CEILING.
18. ALL ELECTRICAL, MECHANICAL, AND PLUMBING PENETRATING FIRE WALLS SHALL BE FIRE CALLED. PENETRATIONS THROUGH RATED CONSTRUCTION SHALL BE SEALED WITH A MATERIAL CAPABLE OF PREVENTING THE PASSAGE OF FLAMES AND HOT GASES WHEN TESTED IN ACCORDANCE WITH ASTM-E-141.
19. ALL MECHANICAL SYMBOLS ARE DRAWN PARAMETRICALLY. CONTRACTOR TO VERIFY WITH OWNER LOCATION OF VENTS, DAMPERS, RESISTERS, ETC.
20. FLEXIBLE DUCTWORK LENGTH NOT TO EXCEED 12'-0".
21. FLEXIBLE DUCTWORK INCLUDING PLAN FOR FINAL GRILLE AND DIFFUSER LOCATIONS AND COORDINATION AS REQUIRED.
22. FINAL LOCATION OF TEMPERATURE CONTROLS TO BE COORDINATED WITH OWNER AT JOB SITE.
23. PROVIDE AND INSTALL SMOKE DETECTORS AS APPROVED BY LOCAL AGENS. PLACE NEAR RA AND S/A OPENINGS OF AHU AND PROVIDE, WITH ACCESS PANEL, WIRING BY ELECTRICAL CONTRACTOR.
24. FRESH AIR INTAKES ARE REQUIRED TO HAVE NOTORIZED OR GRAVITY DAMPERS TO SHUT OFF WHEN SYSTEM IS NOT RUNNING.



**WATER HEATER VENTILATION DETAIL**  
N.T.S.

**SINGLE PACKAGE ROOF-TOP AC UNITS SCHEDULE**

UNIT NUMBER	TOTAL CFM	MINIMUM AIR CFM	EXT. STATIC PRESSURE IN W.G.	TOTAL SENSIBLE BTUH	ENTERING DB.T.	LEAVING DB.T.	VOL. FLOW (CFM)	FAN UNIT WEIGHT	HEATING NUMBER	MODEL	UNIT WEIGHT
RTU-1	4000	400	0.30	113,000	101.410	80	67	60.1	37.9	208	1.17
RTU-2	4000	400	0.30	113,000	101.410	80	67	60.1	37.9	208	3
RTU-3	6000	400	0.30	168,000	101.000	80	67	60.2	38.9	208	3
											1.00
											1.50
											2.50

**MINI-SPLIT DUCTLESS AC SYSTEM SCHEDULE**

UNIT NUMBER	ROOM	TONS	MAX. CAPACITY	MIN. CAPACITY	EST. BTUH	MINIMUM BTUH	MAXIMUM BTUH	CONDENSING UNIT	ELECTRICAL DATA
AC-1	3	600	120	60	34,000	16,000	44,000	48W/1.5A/115V/60Hz	120V/160A/2P/1P/1.65

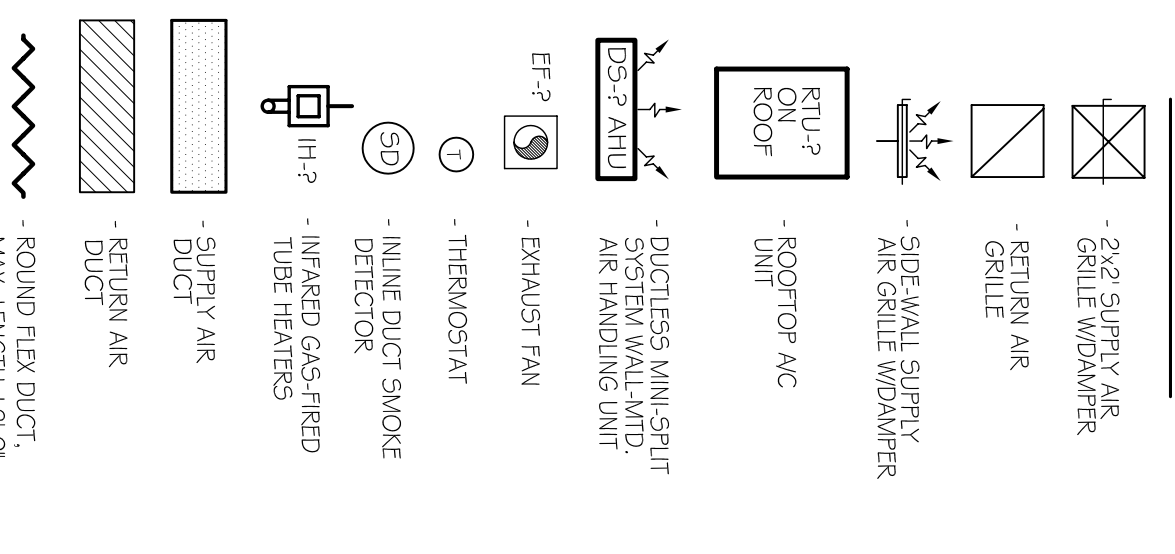
**EXHAUST FAN SCHEDULE**

NO.	LOCATION	CFM	EXT. S.P.	MOTOR HP(W)	TYPE	DRIVE	ELECTRICAL (V/PH/Hz)	MAINF.
EF-1	WOMEN'S RESTROOM	250	0.3	2.12W	CEILING DIRECT	120V/60		BROWN
EF-2	WOMEN'S RESTROOM	250	0.3	2.12W	CEILING DIRECT	120V/60		BROWN
EF-3	RESTROOM	100	0.3	1.21W	CEILING DIRECT	120V/60		BROWN

**GAS-FIRED INFRARED TUBE HEATERS SCHEDULE**

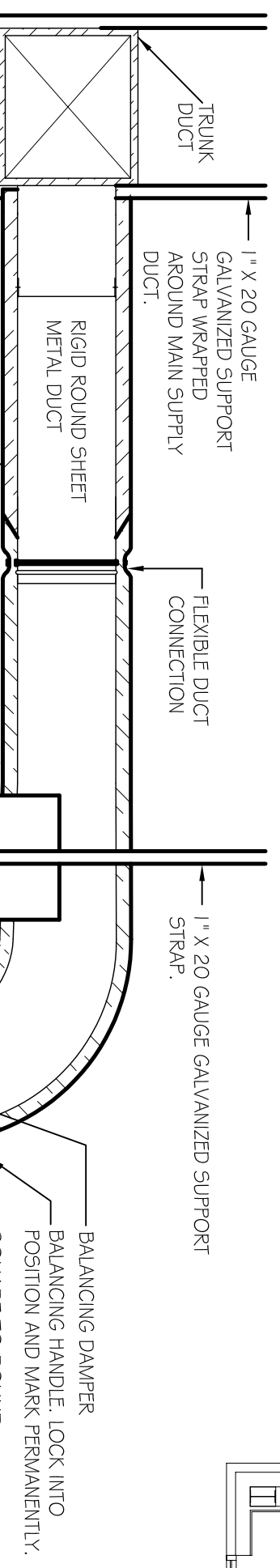
UNIT NO.	SERVICE AREA	BTUH	MINIMUM BTUH	MAXIMUM BTUH	ELECTRICAL (V/PH/Hz)
IH-1	DINING PATIO	50,000	10,000	120,000	120V/160A/2P
IH-2	DINING PATIO	50,000	10,000	120,000	120V/160A/2P

**HVAC LEGEND**

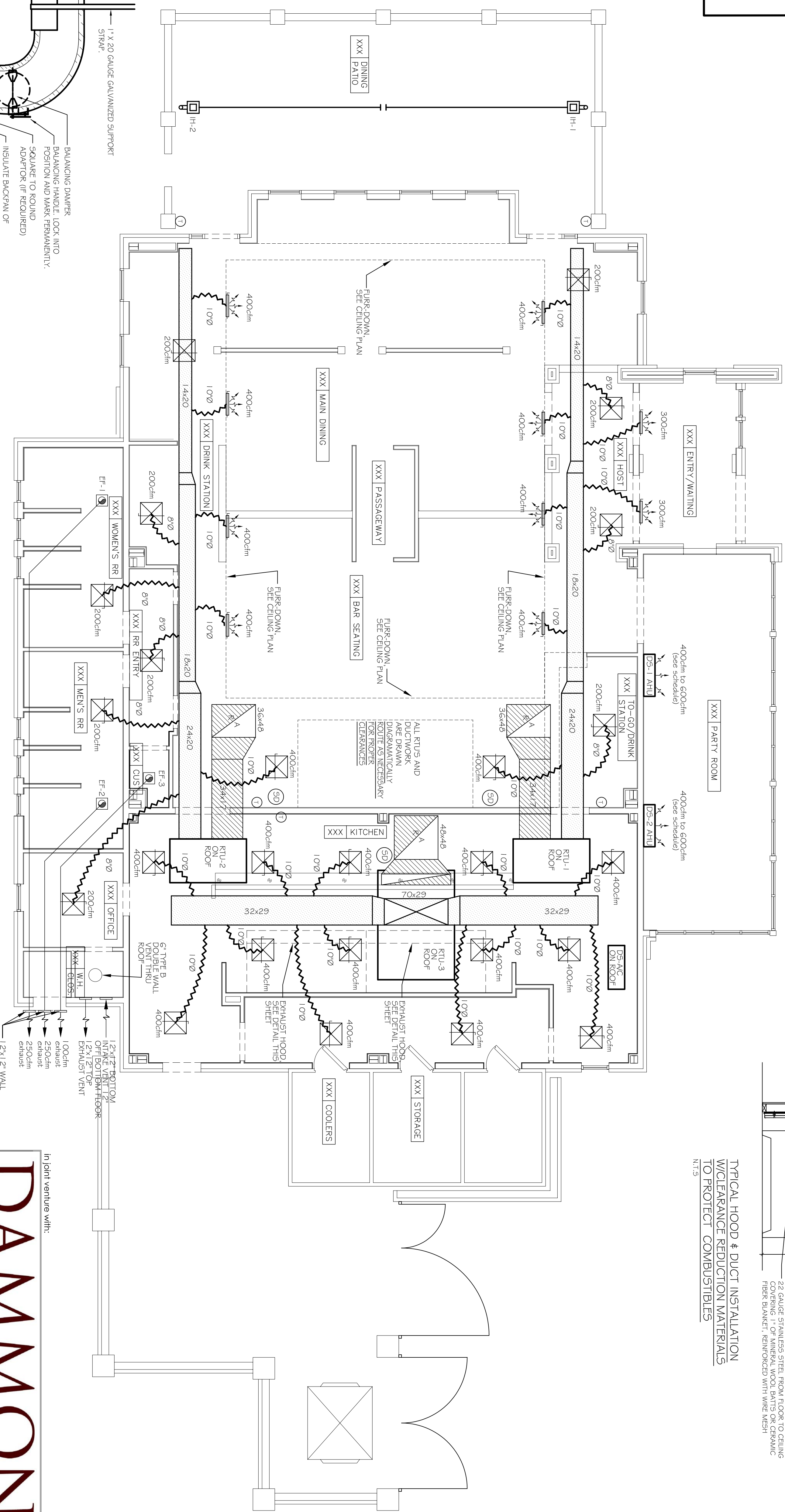


**NOTE 1:** MECHANICAL PLANS IS DRAWN AS SHOWN. CONTRACTOR TO VERIFY ALL LOCATIONS AND SIZES ARE FOR REFERENCE ONLY. FIELD LOCATE AS NEEDED BETWEEN JOISTS OR TRUSSES.

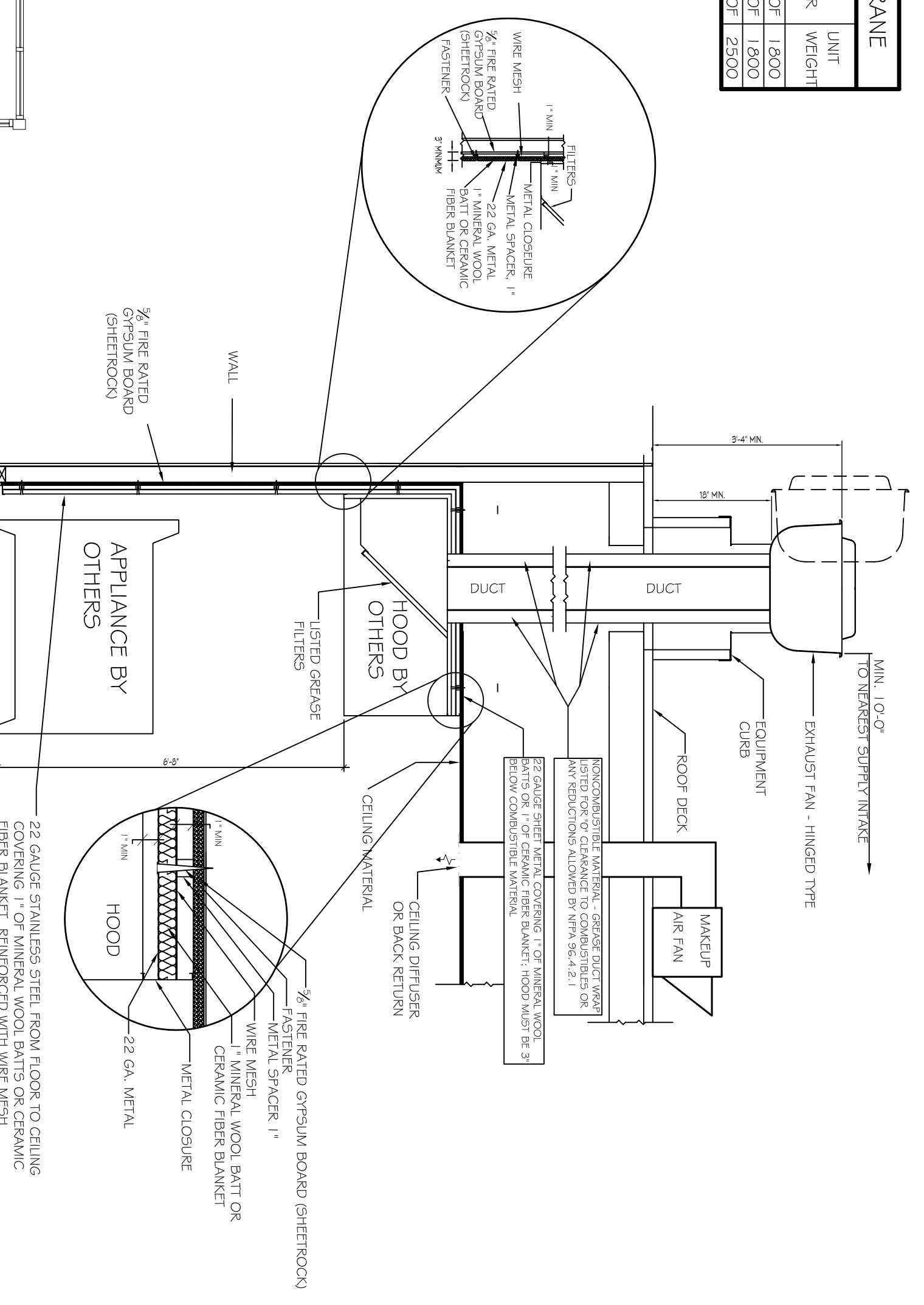
**NOTE 2:** COORDINATE LOCATION OF ALL SUPPLY AIR DIFFUSERS, RETURN AIR GRILLES, EXHAUST FANS, ETC... WITH LIGHTING PLAN.



- WRAPPED INSULATION COVERING RIGID ROUND DUCT**
- NOTES:**
1. PROVIDE AT FLEXIBLE DUCT CONNECTION 7" MINIMUM DRAWING ON THE INTERIOR FLEXIBLE DUCT HEIL.
  2. PROVIDE MINIMUM 4" COLLARS FOR ATTACHMENT OF THE FLEXIBLE DUCT TO ROUND DUCT, DAMPERS AND DIFFUSERS.
  3. BAND RIGID ROUND DUCT INSULATION TO DUCT AND PROVIDE TAPE FOR INSULATION OVERLAP.



**MECHANICAL PLAN**  
3/16" = 1'-0"



**TYPICAL HOOD & DUCT INSTALLATION**  
W/CEMENT REDUCTION MATERIALS TO PROTECT COMBUSTIBLES

Project no.	20-1348
drawn	JTL
checked	KCD
date	09/04/2014
revised	00.00.0000
	00.00.0000

**Meyer Engineers, Ltd.**  
4937 Hearst Street . Suite 1B . Metairie, Louisiana 70001  
2031 Claiborne Street . Mandeville, Louisiana 70448  
phone.504.885.9892 . fax.504.887.5056  
website.www.meyer-e-l.com

**Meyer Engineers, Ltd.**  
ENGINEERS & ARCHITECTS

In joint venture with:

**DAMMON ENGINEERING**  
Architects & Engineers

Chief Engineer: Brian Metcal, PE  
354 Old Spanish Trail  
Dammon Engineering  
Sibley, LA 70089

www.dammonengineering.com  
dammoneng@dammoneng.com  
F: 985.641.3590