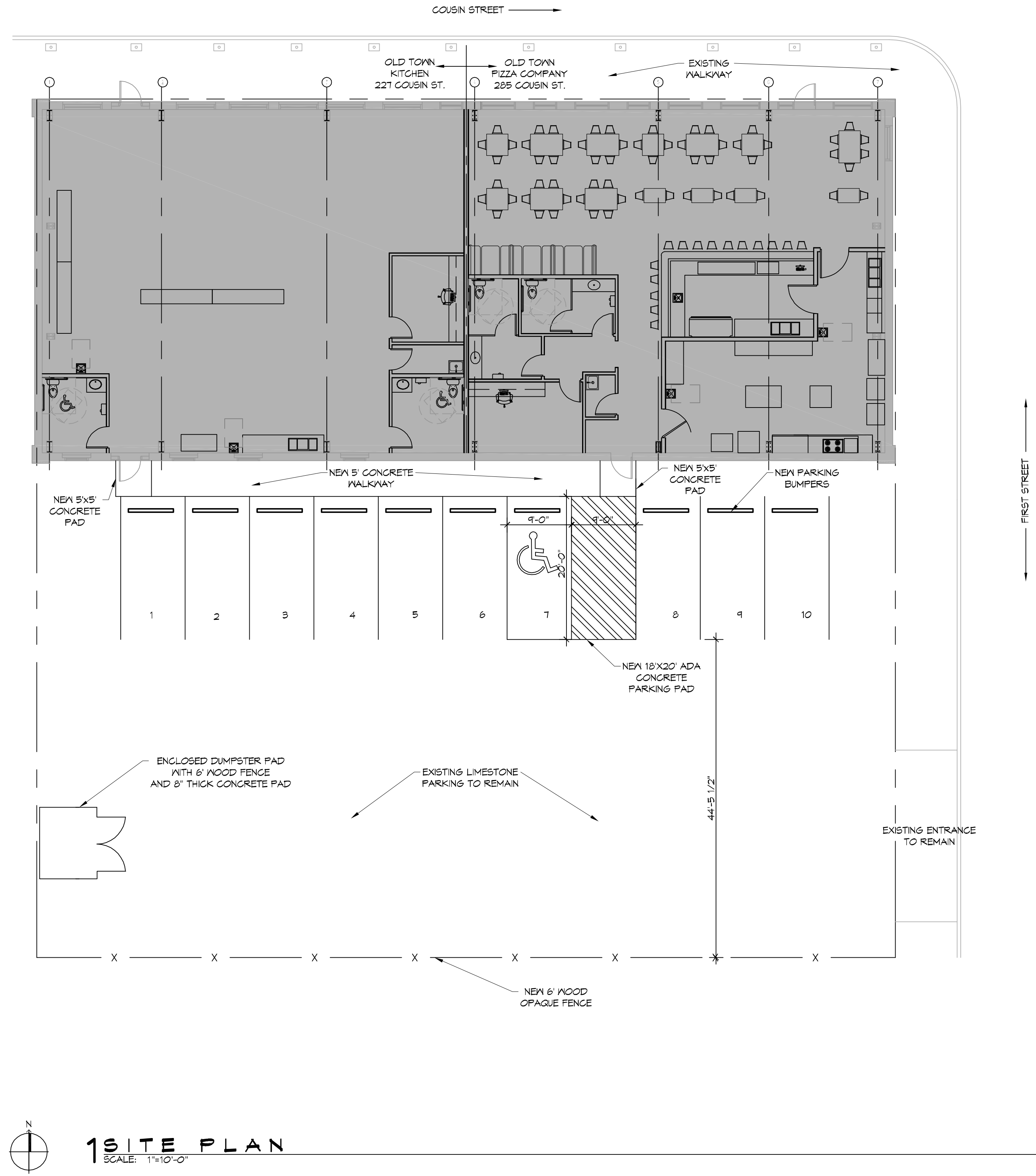






FILE NAME: J:\PROJECTS\RESTAURANT\224 - Old Town Kitchen\Drawings\Site Plan.dwg DATE: 11/21/17 11:21:17



**1 SITE PLAN**  
SCALE: 1"=10'-0"

**DAMMON ENGINEERING, INC.**  
LOUISIANA & MISSISSIPPI

Chief Engineer: Brian Metch, PE  
554 Old Spanish Trail  
Slidell, LA 70468  
www.dammonengineering.com  
info@dammonengineering.com  
PH: 985.649.5832

#	DESCRIPTION	DATE

SEAL:

**NEW PREP FACILITY  
OLD TOWN  
KITCHEN**

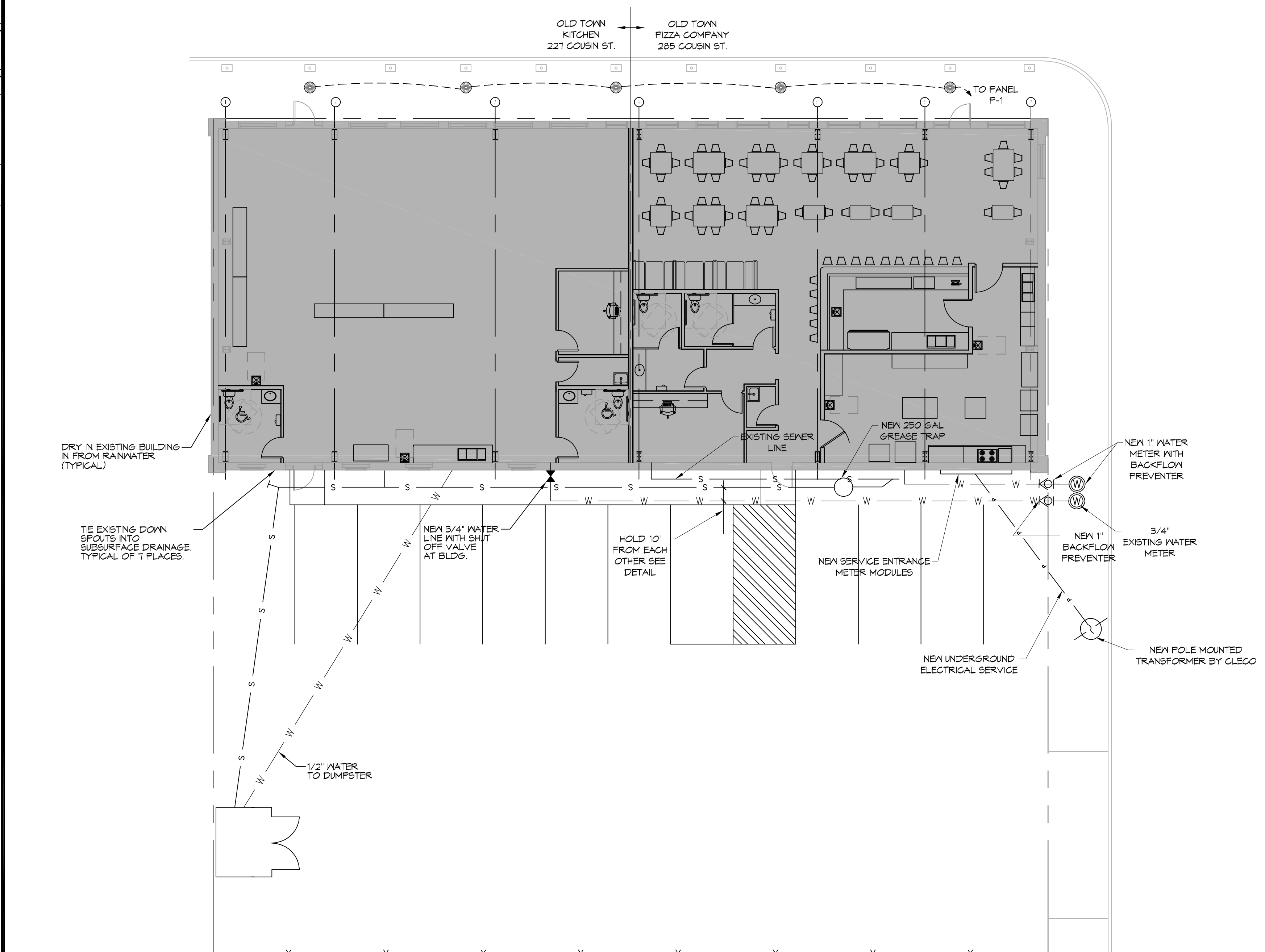
221 COUSIN STREET  
SLIDELL, LA 70468

JOB No: 224 | DATE: 11-21-17  
DRAWN BY: CKD | CHECKED BY: CKD

SHEET TITLE:  
SITE PLAN

DRAWING NUMBER:  
**C101**

FILE NAME: J:\\_MECHANICAL\2124 - Old Town Kitchen\2124 - Old Town Kitchen\2124 - Old Town Kitchen.dwg PLOT DATE: 8/18/16 PLOTTED BY: brian.mistich DATE: 8/18/16



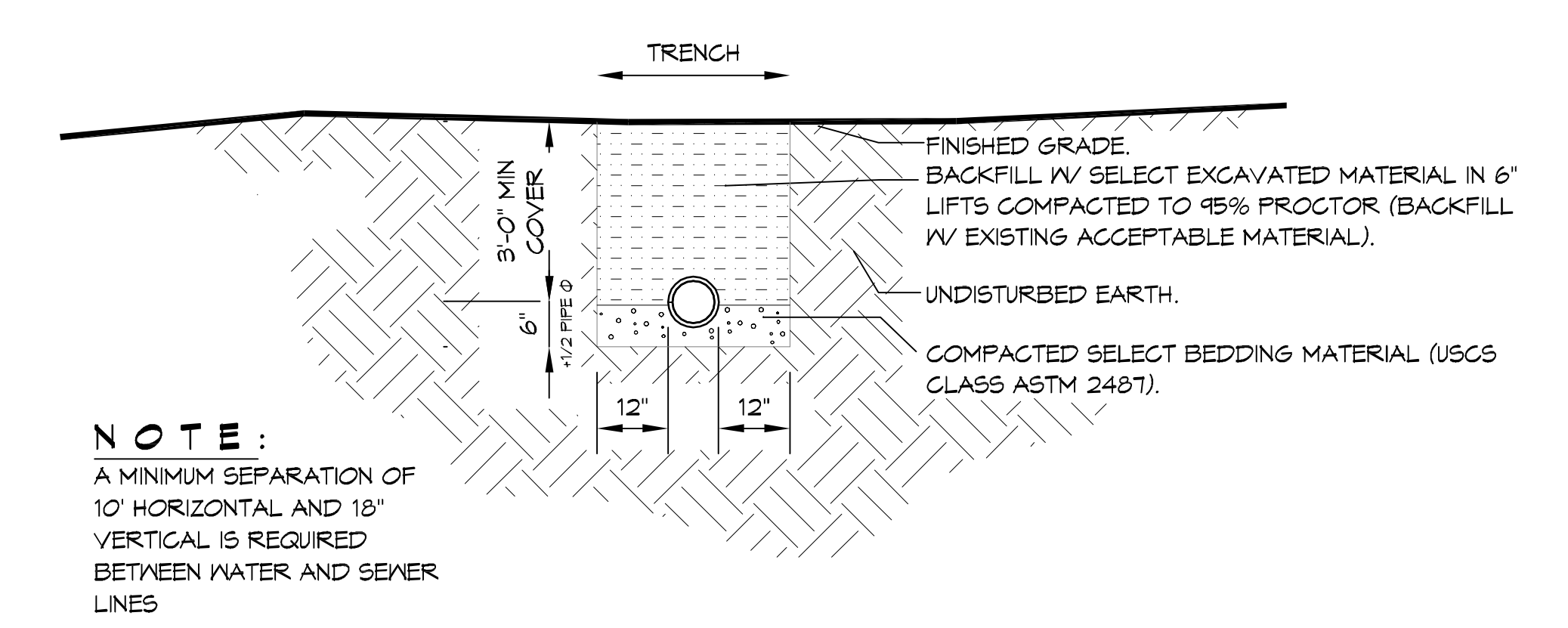
**1 SITE UTILITY PLAN**  
SCALE: 1"=10'-0"

**GENERAL SITE NOTES**

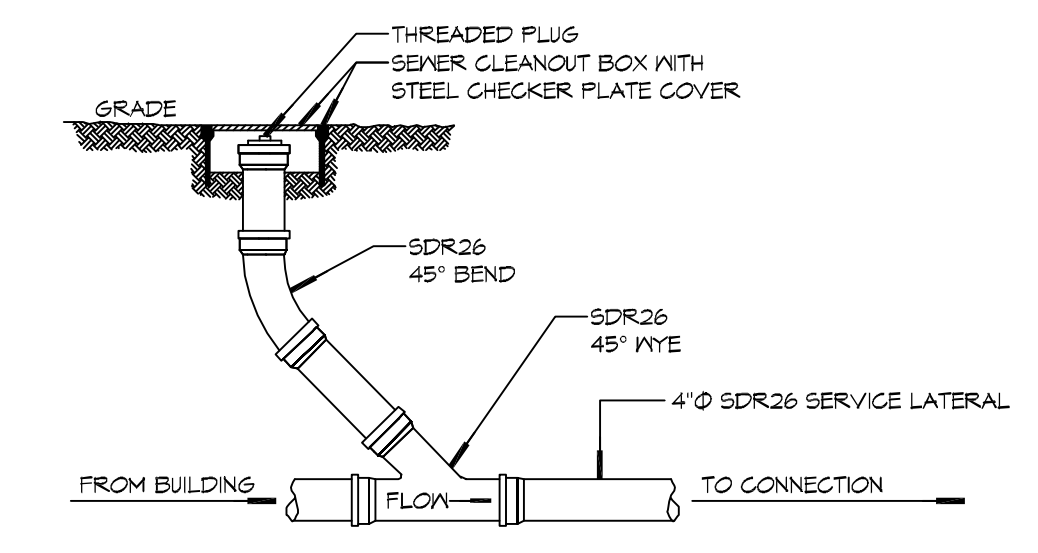
1. PROVIDE ALL LABOR, MATERIAL AND EQUIPMENT FOR A COMPLETE OPERATING SYSTEM. CONTRACTOR IS TO FIELD VERIFY ALL EXISTING UTILITY LOCATIONS, ELEVATIONS, AND INVERTS PRIOR TO COMMENCING ANY WORK. CONTRACTOR SHALL PAY NECESSARY FEES FOR THE UTILITIES CONNECTIONS.
2. CONTRACTOR TO BE RESPONSIBLE TO VERIFY ANY INVERTS AND SET NEW INVERTS OF SEWAGE AND DRAINAGE PIPES.
3. ALL WORK AND MATERIAL TO COMPLY STRICTLY TO THE LATEST LOCAL CITY PARISH, STATE, AND NATIONAL GOVERNING CODES.
4. SEWAGE LINES 3" AND SMALLER SHALL BE SLOPED 1/4" PER FOOT AND LINES THAT ARE 4" AND LARGER SHALL BE SLOPED 1/8" PER FOOT.
10. CONTRACTOR SHALL CONTACT LOUISIANA ONE CALL PRIOR TO COMMENCEMENT OF SITE EXCAVATION.

**SITE UTILITIES LEG**

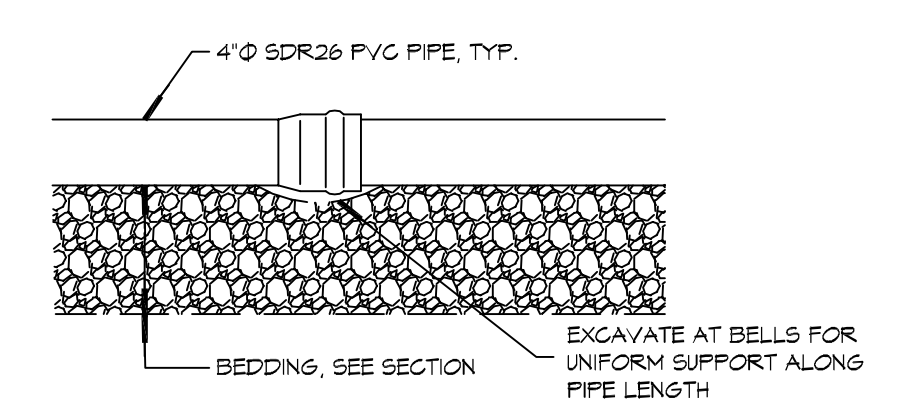
- W — NEW WATER LINE
- S — NEW SEWER LINE
- E — NEW ELECTRICAL LINE



**2 DETAIL**  
SCALE: N.T.S. SEWER AND WATER SEPARATION



**3 DETAIL**  
SCALE: N.T.S. SEWER CLEAN OUT



**4 DETAIL**  
SCALE: N.T.S. TYPICAL PIPE BEDDING

**DAMMON ENGINEERING, INC.**  
 LOUISIANA & MISSISSIPPI  
 Chief Engineer: Brian Mistich, PE  
 554 Old Spanish Trail  
 Slidell, LA 70468  
 www.dammonengineering.com  
 info@dammonengineering.com  
 PH: 985.469.5852

#	DESCRIPTION	DATE

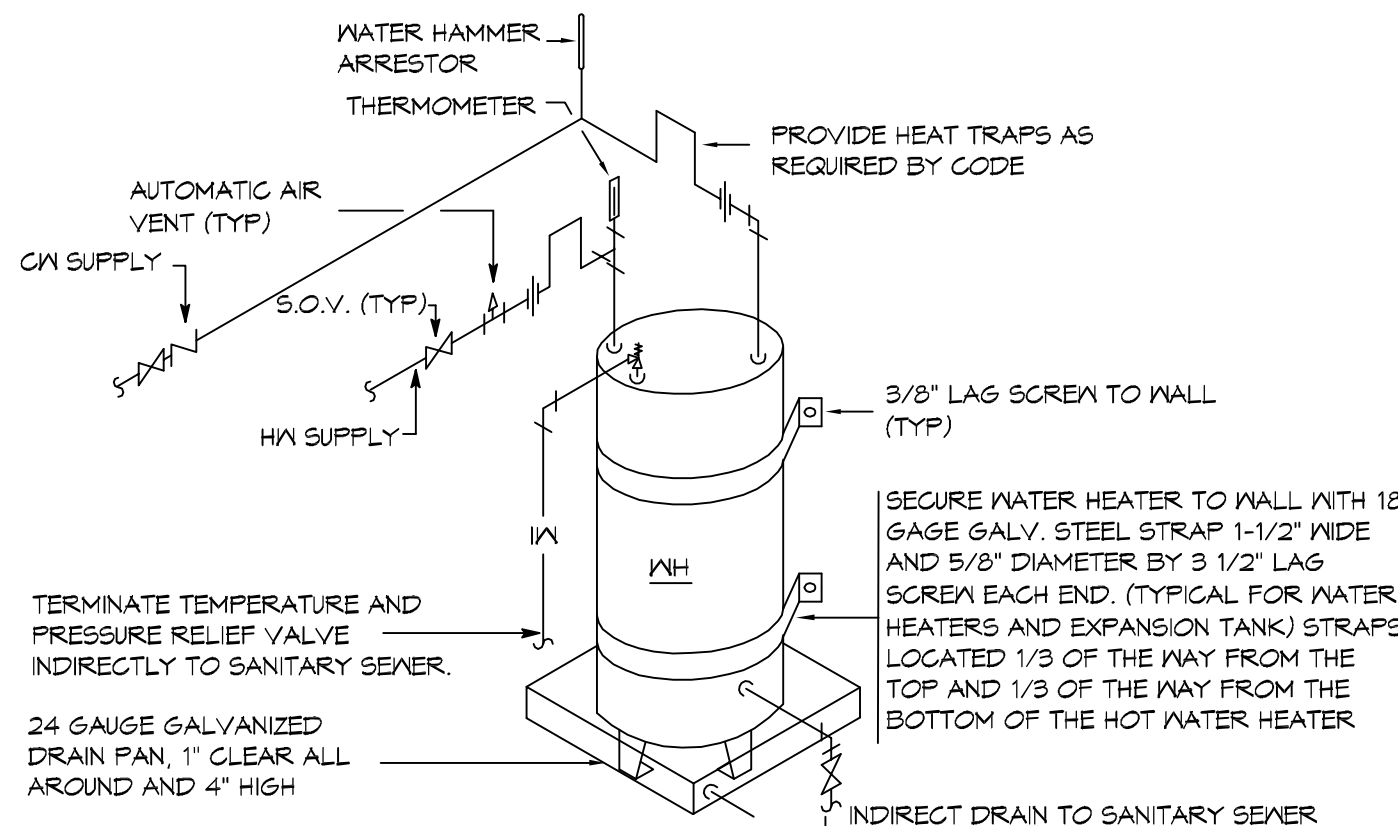
SEAL:

Brian A. Mistich  
Professional Engineer  
License No. 30187

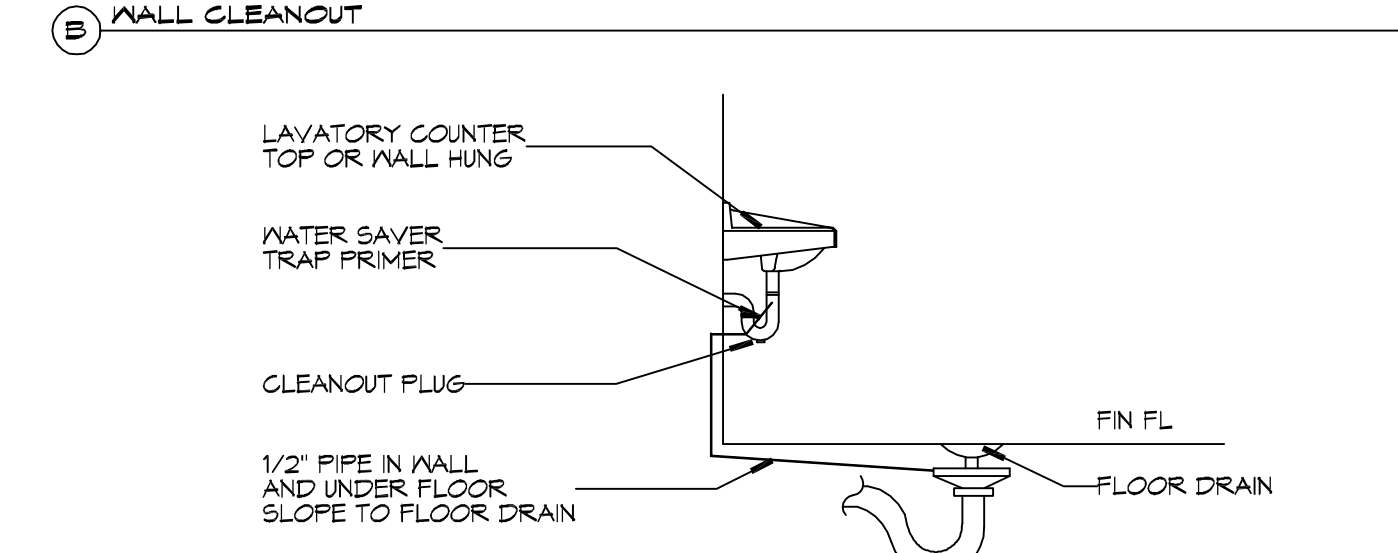
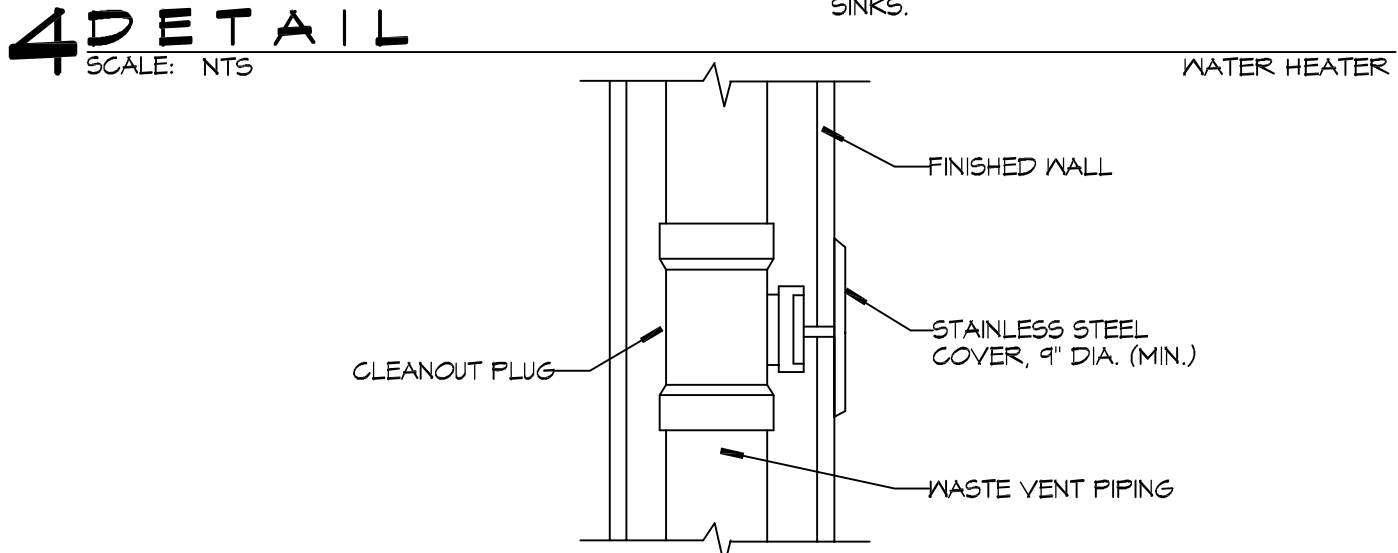
NEW PREP FACILITY  
 OLD TOWN KITCHEN  
 227 COUSIN STREET  
 SLIDELL, LA 70468  
 JOB No: 2524 | DATE: 11-21-17  
 DRAWN BY: CKD | CHECKED BY: CKD

SHEET TITLE:  
 SITE UTILITY PLAN  
 DRAWING NUMBER:  
**C102**  
 SHEET No: 4 of 9

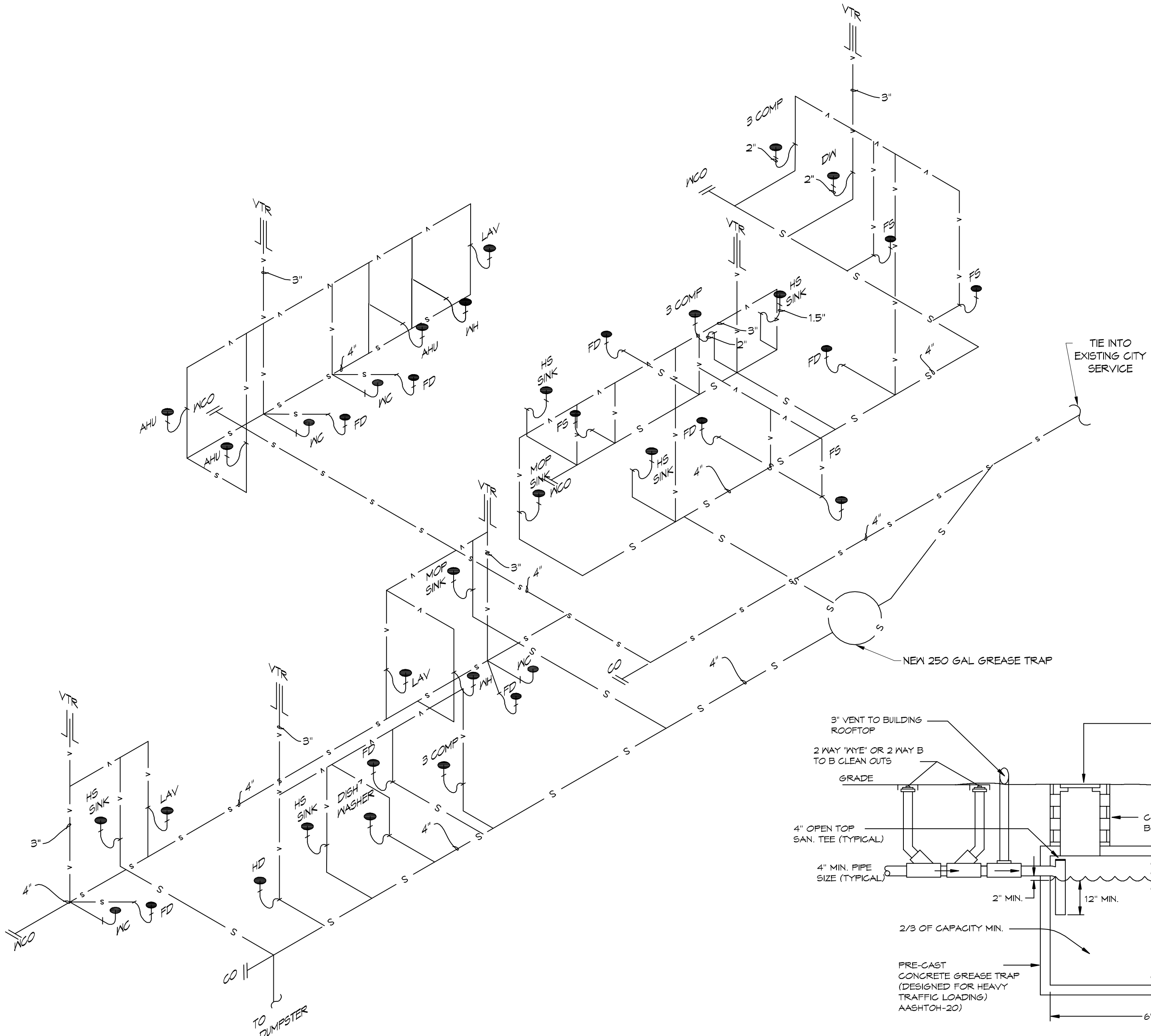




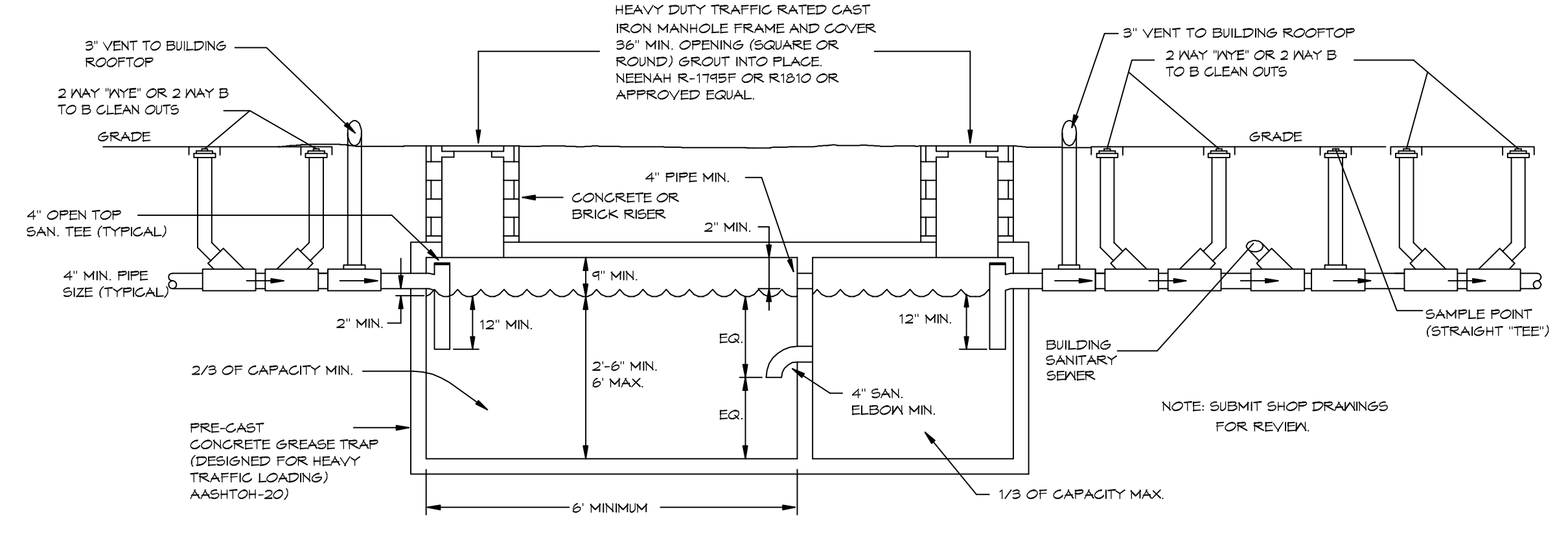
- NOTES:**
1. A WATERTIGHT PAN WITH 1" DRAIN SHALL BE PROVIDED UNDER WATER HEATER. DRAIN DIRECTLY OUTSIDE.
  2. WATER HEATER TEMPERATURE TO BE SET AT 140° F. PROVIDE TEMPERING VALVE (SET @ 110° F) FOR ALL HAND SINKS.



**2 TYPICAL DETAILS**  
SCALE: NTS



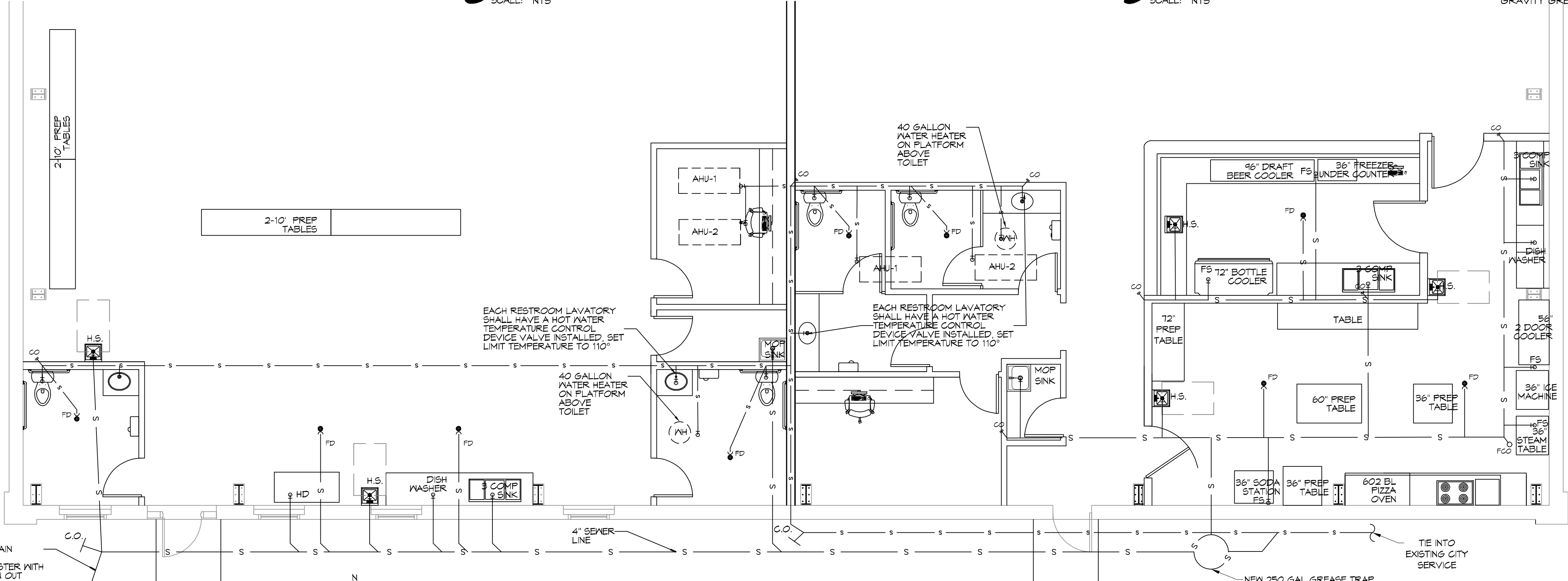
**3 PLUMBING RISER DIAGRAM**  
SCALE: NTS



**5 TYPICAL DETAILS**  
SCALE: NTS

**GENERAL PLUMBING NOTES**

1. SEE VENDOR DRAWINGS.
2. PLUMBING LINES SHOWN ARE DRAWN DIAGRAMMATIC IN NATURE AND REPRESENT CONCEPTUAL ROUTING ONLY. CONTRACTOR IS RESPONSIBLE FOR FIELD VERIFICATION OF ALL ACTUAL CONDITIONS.
3. PROVIDE ALL LABOR, MATERIAL, TRANSPORTATION, SUPERVISION, CLEAN-UP SERVICES, AND EQUIPMENT FOR A COMPLETE OPERATING SYSTEM. THE SYSTEM SHALL INCLUDE HOT AND COLD WATER PIPING, SEWER AND VENT PIPING, INSULATION, WATER HEATER, HANGERS, VALVES, SUPPORTS WITHOUT ANY RESTRICTIONS TO VOLUME, CUT AND PATCH AS REQUIRED TO INSTALL PIPES.
4. ALL WORK AND MATERIAL SHALL CONFORM STRICTLY TO THE LATEST LOCAL CITY, PARISH, STATE AND NATIONAL GOVERNING CODES. MUST MEET LA STATE PLUMBING CODE 2013 REQUIREMENTS.
5. CONTRACTOR IS TO FIELD VERIFY ALL EXISTING UTILITY LOCATIONS, ELEVATIONS AND SIZES PRIOR TO COMMENCING ANY WORK. CONTRACTOR SHALL PAY NECESSARY FEES FOR THE UTILITIES CONNECTIONS.
6. CONTRACTOR IS RESPONSIBLE TO VERIFY THE EXISTING INVERTS AND SET NEW INVERTS OF SEWERAGE AND DRAINAGE PIPES.
7. SEWERAGE LINES 3-INCH AND SMALLER SHALL BE SLOPED 1/4" PER FOOT AND LINES 4-INCH AND LARGER SHALL BE 1/8" PER FOOT.
8. TEST ALL PIPING AT REQUIRED PRESSURE.
9. ALL PLUMBING SHALL BE CLOSELY COORDINATED WITH STRUCTURAL, MECHANICAL SYSTEM AND ELECTRICAL SYSTEMS TO INSURE NO TRADES WILL CONFLICT WITH EACH OTHER.
10. DO NOT SCALE DRAWINGS. SEE ARCHITECTURAL DRAWINGS FOR EXACT LOCATIONS OF DOORS, WINDOWS, WALLS, FIXTURES, ETC.
11. ALL WATER MAINS AND PIPING NOT SHOWN FOR CLARITY, ALL LOCATIONS FIELD VERIFIED.
12. DOMESTIC HOT AND COLD WATER PIPING AND FITTINGS UNDER SLAB SHALL BE ASTM B88 COPPER WATER TUBE, TYPE K, SOFT ANNEALED. NO JOINTS SHALL BE ALLOWED UNDER THE SLAB.
13. DOMESTIC WATER PIPING AND FITTINGS ABOVE THE SLAB SHALL BE ASTM B88 COPPER WATER TUBE, TYPE L. HARD DRAWN WITH COPPER PRESSURE TYPE FITTINGS, ANSI B16.22. THE JOINTS SHALL BE SOLDERED TYPE USING ASTM B32, ALLOY GRADE 45A (75-5) SOLDER.
14. SOIL, WASTE, VENT PIPING AND FITTINGS ABOVE THE SLAB SHALL BE SERVICE WEIGHT CAST IRON PIPE WITH BELL AND SPIGOT ENDS AND ONE PIECE NEOPRENE INSERT TYPE GASKET. USE PVC SCHEDULE 40 OR ABS DWV PIPES AND FITTINGS WHERE PERMITTED BY CODE.
15. ALL WATER PIPING AND FITTINGS ABOVE THE FLOOR SHALL BE INSULATED WITH 1/2" THICK FIBERGLASS INSULATION AND JACKET.
16. ALL ELECTRICAL, MECHANICAL AND PLUMBING ELEMENTS PENETRATING FIRE PARTITIONS SHALL BE FIRE CAULKED. (PENETRATIONS THROUGH RATED CONSTRUCTION SHALL BE SEALED WITH A MATERIAL CAPABLE OF PREVENTING THE PASSAGE OF FLAMES AND HOT GASES WHEN TESTED IN ACCORDANCE WITH ASTM-E814.)
17. SEE ROOF PLAN FOR PLUMBING ROOF PENETRATIONS. ROUTE VENT PIPES IN ATTIC AS NECESSARY.
18. ALL VENTS THROUGH ROOF (VTR) SHALL BE LOCATED A MINIMUM OF 10'-0" FROM ANY MECHANICAL OR NATURAL AIR INTAKE.



**1 PLUMBING PLAN**  
SCALE: 3/16"=1'-0"

**LEGEND**

SYMBOL	DESCRIPTION
—S—S—	SANITARY SEWER
—V—V—	VENT PIPE
●FD	FLOOR DRAIN
—CO	LINE CLEAN OUT
—MCO	MALL CLEAN OUT

**MINIMUM PLUMBING FIXTURE COUNT**

IBC 2012 OCCUPANT LOAD TABLE 1004.1.2

ASSEMBLY WITHOUT FIXED SEATS - UNCONCENTRATED (TABLES AND CHAIRS) - 15 NET	1154 S.F. / 15 = 77
KITCHENS, COMMERCIAL - 200 GROSS	841 S.F. / 200 = 4.5
OFFICE - Business areas - 100 GROSS	164 S.F. / 100 = 1.7
TOTAL OCCUPANCY PER IBC	83.2

IPC 2012 PARA 403.1.1 FIXTURE CALCULATIONS, TO DETERMINE THE OCCUPANT LOAD OF EACH SEX THE TOTAL OCCUPANT LOAD SHALL BE DIVIDED IN HALF. THEREFORE EACH SEX = 41.6

IPC 2012 Table 403.1 - A-2 RESTAURANT - 1 WATER CLOSETS PER 75 OCCUPANTS = 1 MALE AND 1 FEMALE.

**MINIMUM SIZE GREASE TRAP**

AMENDMENT PART 1 TO IPC 2012, SECTION 1009.3.5

A. THE MINIMUM CAPACITY FOR APPLICATIONS WITHOUT A GARBAGE GRINDER SHALL NOT BE LESS THAN 125 GALLONS BELOW THE STATIC WATER LEVEL. ...WHEN OVER 50 PEOPLE ARE SERVED DURING A SINGLE MEAL PERIOD, THE MINIMUM CAPACITY SHALL BE INCREASED BEYOND 125 GALLONS BASED UPON AT LEAST AN ADDITIONAL 2 1/2 GALLONS PER PERSON BEGINNING WITH THE 51ST PERSON SERVED AND GREATER.

NUMBER OF OCCUPANTS	77
MINIMUM SIZE GREASE TRAP	125 + (25 X 27) = 192.5 GAL = 250 GAL; GRAVITY OR HYDROMECHANICAL WITH A FLOW RATE OF 100 GPM.

**DAMMON ENGINEERING, INC.**  
LOUISIANA & MISSISSIPPI

Chief Engineer: Brian Mistich, PE  
554 Old Spanish Trail  
Slidell, LA 70688  
www.dammonengineering.com  
info@dammonengineering.com  
PH: 985.649.5832

REVISIONS

#	DESCRIPTION	DATE
1	REVISED PLUMBING DIAGRAM	11-13-15

SEAL:

NEW PREP FACILITY  
OLD TOWN KITCHEN

DATE: 11-21-17  
2524  
DRAWN BY: CKD  
CHECKED BY: CKD

SHEET TITLE: PLUMBING PLAN AND PLUMBING RISER DIAGRAM

DRAWING NUMBER: **P101**

SHEET No: 6 of 9

FILE NAME: A:\PROJECTS\2024\01\20240101\MECHANICAL\_FLOOR\_PLAN.dwg  
 DATE: 11/21/24  
 DRAWN BY: BMM  
 CHECKED BY: CCK  
 PLOT DATE: 11/21/24  
 PLOT SCALE: 1/4"=1'-0"

A/C UNIT SCHEDULE						
TOTAL BTU	ELECTRICAL			COMMENTS		
	VOLTAGE	MCA	CKT BRKRS	NOTE: ALL A/C TO BE SPLIT-SYSTEM HVAC (TRANE OR EQUAL)		
120,000 BTU (10 TON) AHU #1	240V, 3Ø	-	P1, -,-			

AHU UNIT SCHEDULE							
TOTAL BTU	CFM	O.A.	HEAT (KVA)	ELECTRICAL			COMMENTS
				VOLTAGE	MCA	CKT BRKRS	NOTE: ALL A/C TO BE SPLIT-SYSTEM HVAC (TRANE OR EQUAL) ALL AHU TO BE SINGLE POINT CONNECTION
90,000 BTU (7.5 TON) AHU #1	3,800	500	12	240V, 3Ø	-	P1, -,-	

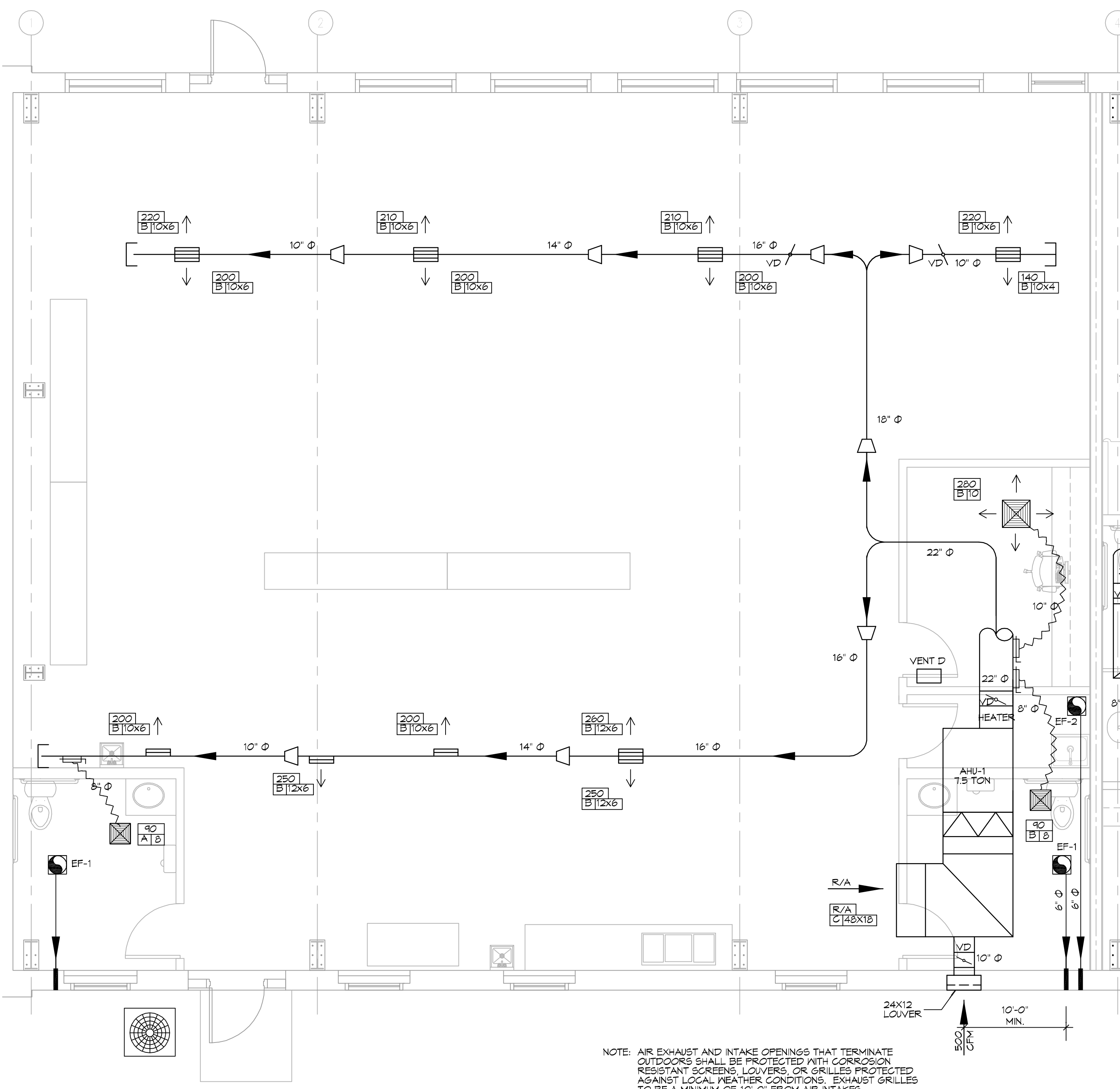
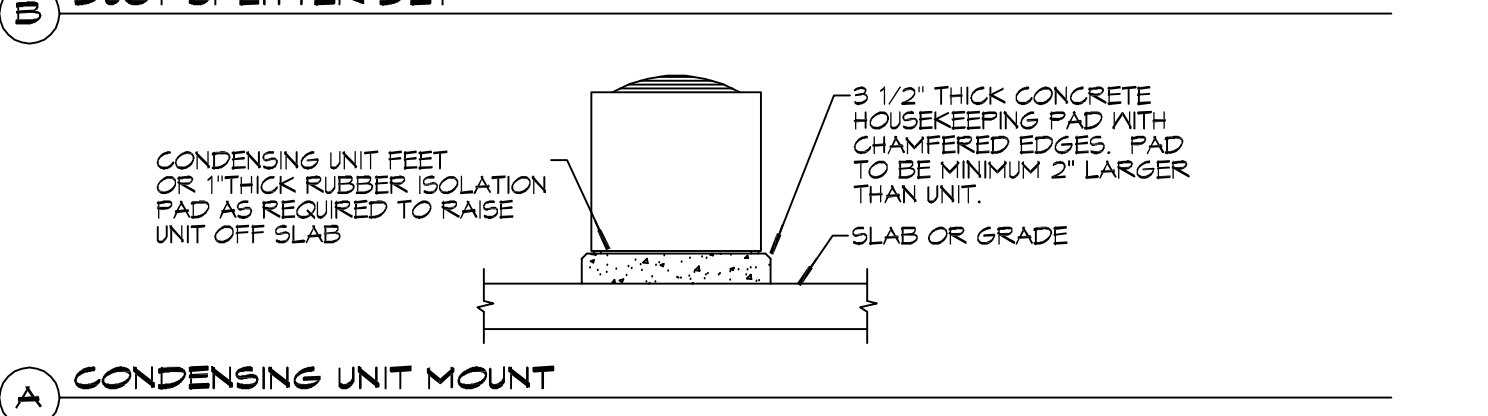
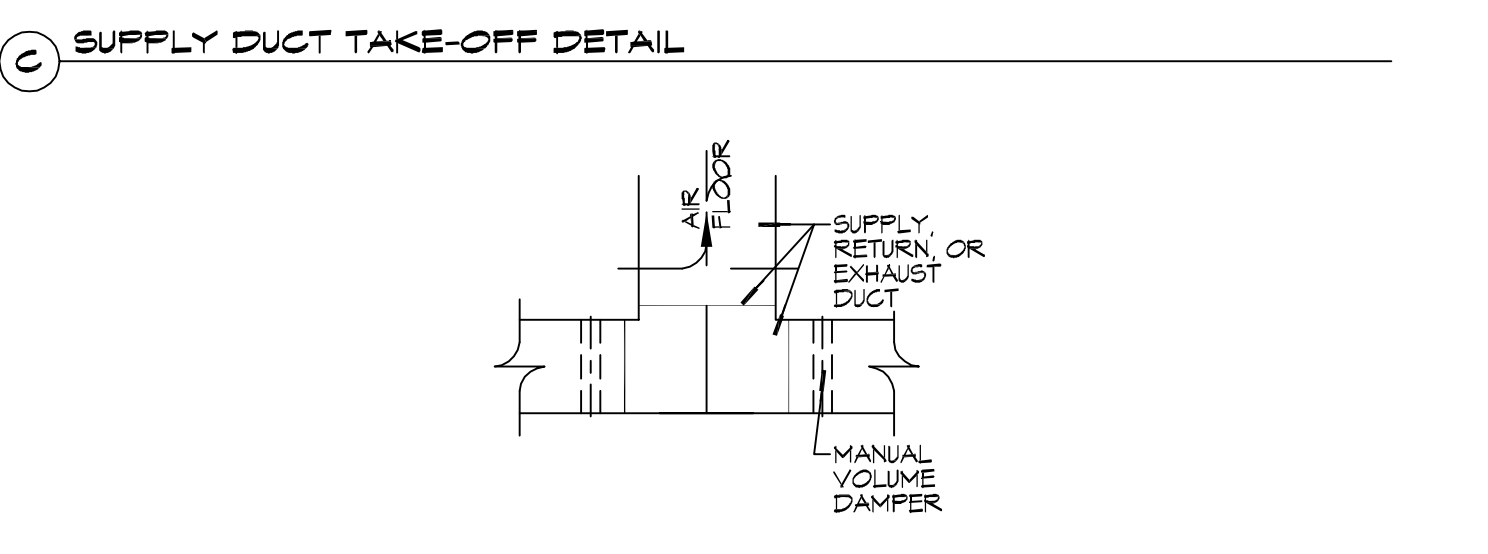
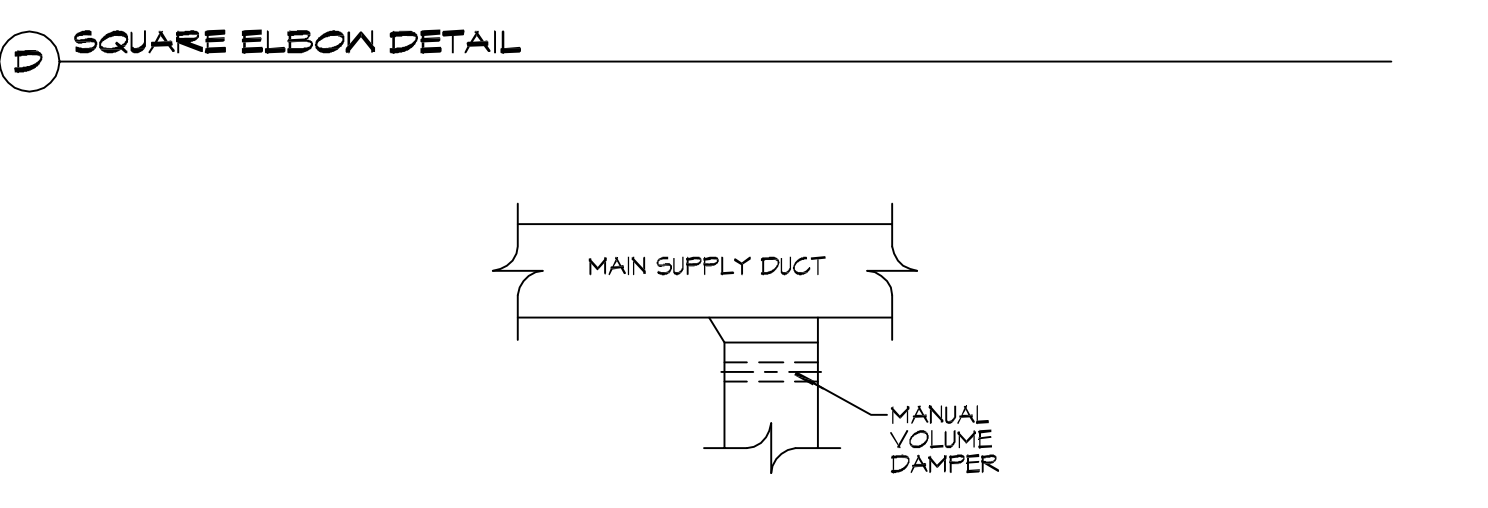
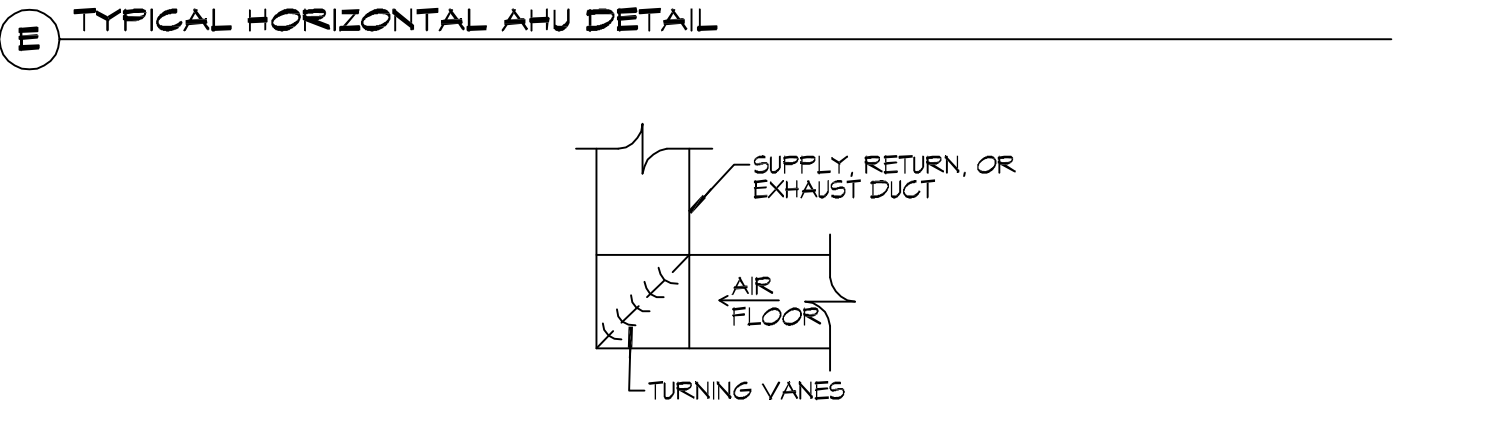
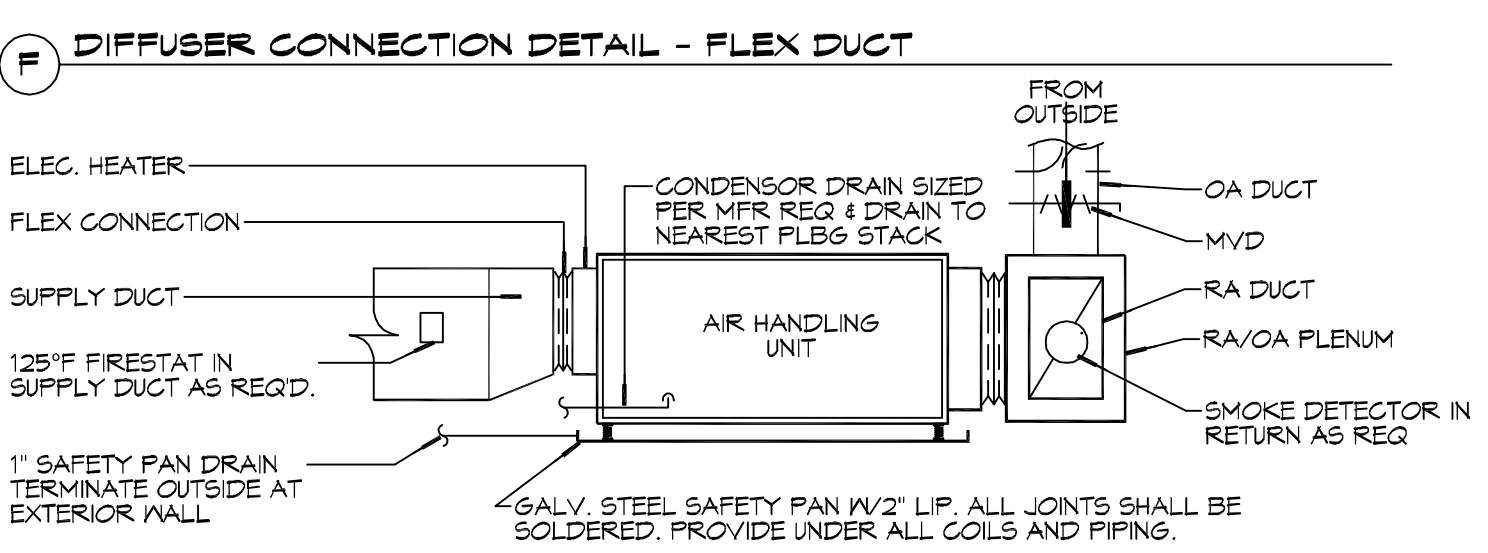
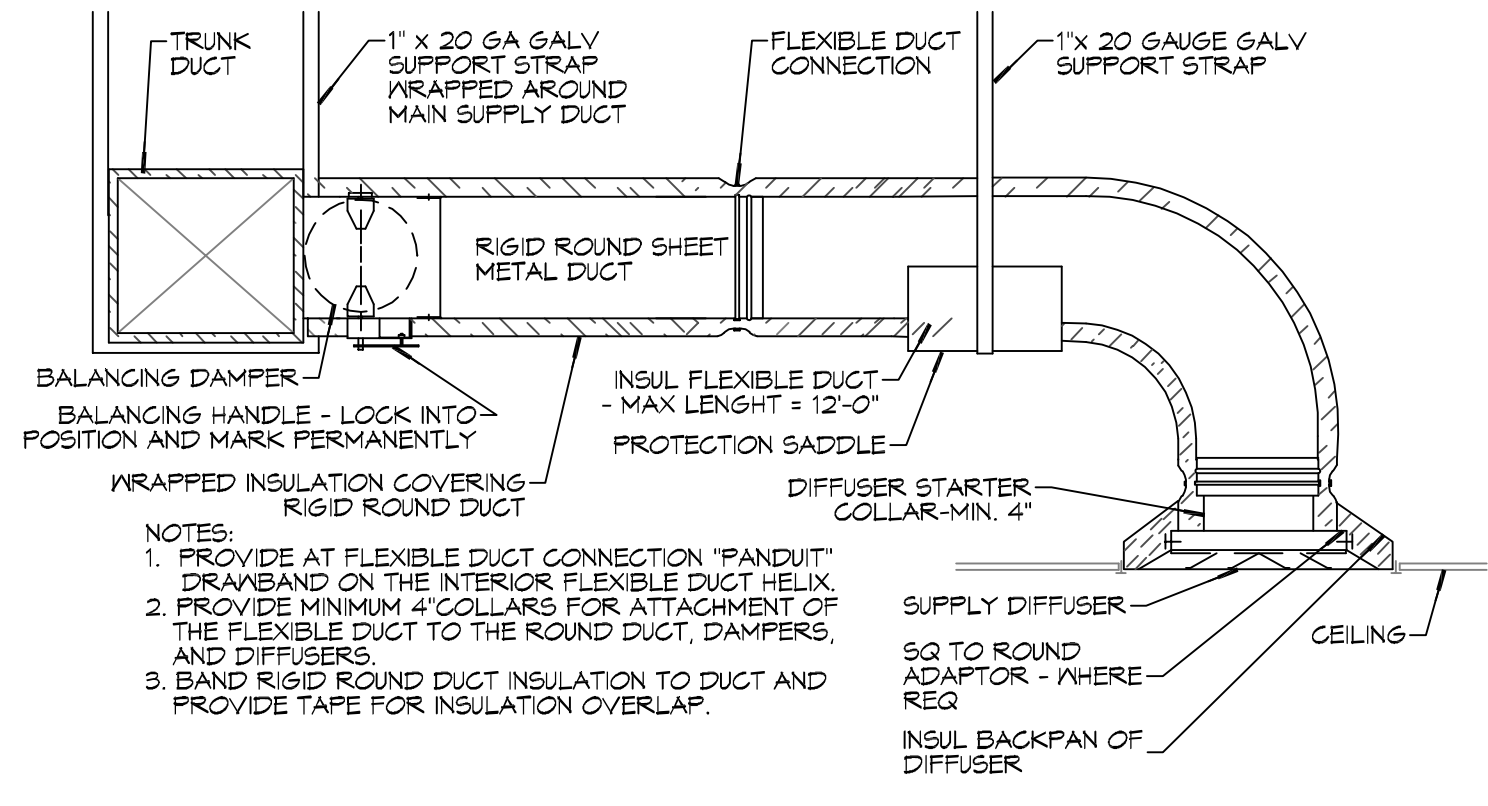
DIFFUSER/REGISTER SCHEDULE			
TAG	SERVICE	SIZE	DESCRIPTION
A	SUPPLY	REF. PLAN	12X12 STEEL CONE DIFFUSER, WHITE FINISH WITH VOLUME CONTROL
B	SUPPLY	REF. PLAN	LOUVERED STEEL DIFFUSER/ADJUSTABLE DOUBLE DEFLECTION ALUMINUM FINISH WITH VOLUME CONTROL
C	RETURN	REF. PLAN	LOUVERED FACE SIDEWALL RETURN, WHITE FINISH, ALUMINUM FRAME
D	RETURN	20X8	STEEL DOOR GRILLE, WHITE FINISH, SIGHT PROOF CORE

EXHAUST FAN SCHEDULE					
EXHAUST	LOCATION	CFM	VOLTAGE	TYPE	MANUFACTURER
EF-1	TOILET	90	120	VENT	BROAN OR EQUAL
EF-2	JANITOR	100	120	VENT	BROAN OR EQUAL

### GENERAL HVAC NOTES

- CONCEALED DUCTWORK TO BE GALVANIZED SHEET METAL LINED WITH FIBROUS GLASS DUCT LINER, MIN R-6. INSTALLED PER SMACNA STANDARDS.
- EXPOSED DUCTWORK TO BE GALVANIZED SHEET METAL LINED WITH FIBROUS GLASS DUCT LINER, MIN R-6. INSTALLED PER SMACNA STANDARDS.
- ROUND FLEXIBLE DUCT TO BE UL-181, CLASS 1, AIR DUCT MATERIALS. DUCT SIZES SHOWN ARE CLEAR INSIDE DIMENSIONS.
- IN ALL SYSTEMS OVER 2000 CFM AND LESS THAN 15,000 CFM, SMOKE DETECTORS SHALL BE INSTALLED IN ACCORDANCE WITH NFPA 72E IN THE RETURN DUCT DOWNSTREAM OF THE AIR HANDLING UNIT AND ALL FILTERS TO AUTOMATICALLY STOP THE FAN.
- PROVIDE UL LISTED 125°F FIRESTAT IN RETURN AIR OF EACH SYSTEM UNDER 2000 CFM TO SHUT DOWN THE FAN IN THE EVENT OF FIRE.
- PROVIDE UL RATED FIRE DAMPERS WHERE REQUIRED AT ALL DUCT PENETRATIONS OF FIRE-RATED ASSEMBLIES AND WHERE REQUIRED BY CODE, INCLUDING OUTSIDE AIR INTAKES AND EXHAUST FANS.
- CONDENSATE DRAINS TO BE PVC PIPE RUN TO PLUMBERS P-TRAP WITHIN FIVE FEET OF AIR HANDLING UNITS.
- ALL AIR HANDLING SYSTEMS TO BE BALANCED TO ASSURE PROPER AIR FLOWS PER PLANS.
- ALL THERMOSTATS TO BE AUTOMATIC CHANGEOVER WITH HEAT SWITCH.
- EXHAUST FAN SHALL BE CONTROLLED BY A SWITCH ON THE WALL IN THE SAME LOCATION AS LIGHT SWITCH(S). PROVIDE BACK DRAFT DAMPER.
- PROVIDE AND INSTALL WATER PROOF GRILLE VENT IN PROPER ROOF LOCATION FOR PLUMBING FIXTURE EXHAUST.
- ALL SUPPLY AIR VENTS SHALL BE EQUIPPED WITH AIR CONTROL DAMPERS AT THE REGISTER.
- LOCATE OUTDOOR UNITS AS SHOWN ON ARCHITECTURAL DRAWINGS.
- REFRIGERANT LINES SHALL BE SIZED BY UNIT MANUFACTURER AND INSTALLED ACCORDING TO MANUFACTURER'S INSTRUCTIONS.
- FRESH AIR SHALL BE SUPPLIED TO EACH AIR HANDLER THROUGH EXTERIOR WALL DUCT SUPPLIED WITH A CONTROL DAMPER.
- ALL ELECTRICAL, MECHANICAL, AND PLUMBING PENETRATING FIRE WALLS SHALL BE FIRE CAULKED. (PENETRATIONS THROUGH RATED CONSTRUCTION SHALL BE SEALED WITH A MATERIAL CAPABLE OF PREVENTING THE PASSAGE OF FLAMES AND HOT GASES WHEN TESTED IN ACCORDANCE WITH ASTM-E814).
- ALL MECHANICAL SYMBOLS ARE DRAWN DIAGRAMMATICALLY. CONTRACTOR TO VERIFY WITH OWNER LOCATIONS OF VENTS, DAMPERS, REGISTERS, ETC.
- FLEXIBLE DUCTWORK LENGTH NOT TO EXCEED 12'-0".
- REFER TO REFLECTED CEILING PLAN FOR FINAL GRILLE AND DIFFUSER LOCATIONS AND COORDINATE AS REQUIRED.
- FINAL LOCATION OF TEMPERATURE CONTROLS TO BE COORDINATED WITH OWNER AT JOB SITE.
- PROVIDE AND INSTALL SMOKE DETECTORS AS APPROVED BY LOCAL A.H.J.S. PLACE NEAR R/A AND S/A OPENINGS OF AHU AND PROVIDE, WITH ACCESS PANEL, WIRING BY ELECTRICAL CONTRACTOR.
- FRESH AIR INTAKES ARE REQUIRED TO HAVE MOTORIZED OR GRAVITY DAMPERS TO SHUT OFF WHEN SYSTEM IS NOT RUNNING.
- PROVIDE BIRD SCREENS AT ALL EXTERIOR MECHANICAL PENETRATIONS.
- COORDINATE WALL MOUNTED THERMOSTAT LOCATIONS WITH ALL OWNER FURNISHED ITEMS EITHER WALL MOUNTED OR FLOOR MOUNTED AGAINST PARTITIONS. REFER TO ARCHITECTURAL DRAWINGS.
- SEE ROOF PLAN FOR ALL ROOF PENETRATIONS.
- PROVIDE MIN 18 GA GALVANIZED SHEET METAL TO BLANK-OFF GABLE VENTS WHERE INTAKE/EXHAUST DUCTS OCCUR.

**DAMMON ENGINEERING, INC.**  
 LOUISIANA & MISSISSIPPI  
 Chief Engineer: Brian A. Mistich, PE  
 554 Old Spanish Trail  
 Slidell, LA 70688  
 www.dammonengineering.com  
 info@dammonengineering.com  
 PH: 985.649.9832



NOTE: AIR EXHAUST AND INTAKE OPENINGS THAT TERMINATE OUTDOORS SHALL BE PROTECTED WITH CORROSION RESISTANT SCREENS, LOUVERS, OR GRILLES PROTECTED AGAINST LOCAL WEATHER CONDITIONS. EXHAUST GRILLES TO BE A MINIMUM OF 10'-0" FROM AIR INTAKES.

**2 DETAILS**  
SCALE: NTS

**1 MECHANICAL FLOOR PLAN**  
SCALE: 1/4"=1'-0"

### LEGEND

- SUPPLY AIR GRILLE
- RETURN AIR GRILLE
- EXHAUST FAN
- THERMOSTAT
- SUPPLY AIR DUCT
- RETURN AIR DUCT
- DAMPER CONTROL
- ROUND FLEX DUCT, MAX. LENGTH 12'-0", MIN. R-6. PROVIDE MAN. DAMPER AT DIFFUSER CONNECTIONS. DUCT SIZE AS FOLLOWS:  
250 CFM TO 350 CFM = 9"  
200 CFM TO 250 CFM = 8"  
150 CFM TO 200 CFM = 7"  
100 CFM TO 150 CFM = 6"

#	DESCRIPTION	DATE

SEAL:

NEW PREP FACILITY  
 OLD TOWN  
 KITCHEN  
 221 COUSE STREET  
 SLIDELL, LA 70469  
 JOB No: 2524  
 DATE: 11-21-24  
 DRAWN BY: BMM  
 CHECKED BY: CCK

SHEET TITLE:  
 MECHANICAL FLOOR PLAN,  
 SCHEDULES AND DETAILS  
 DRAWING NUMBER:  
**M101**

SHEET No: 7 of 9



