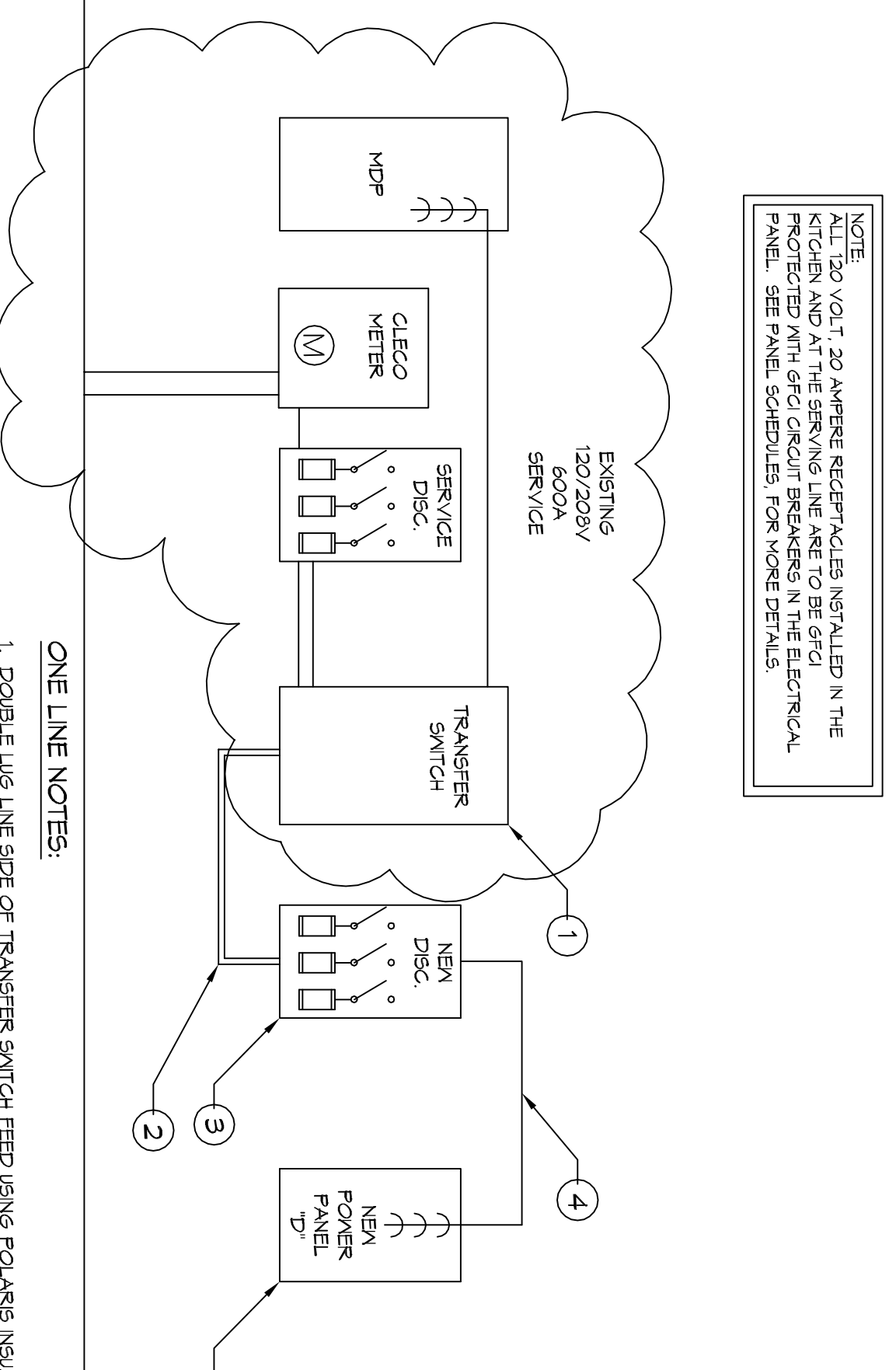
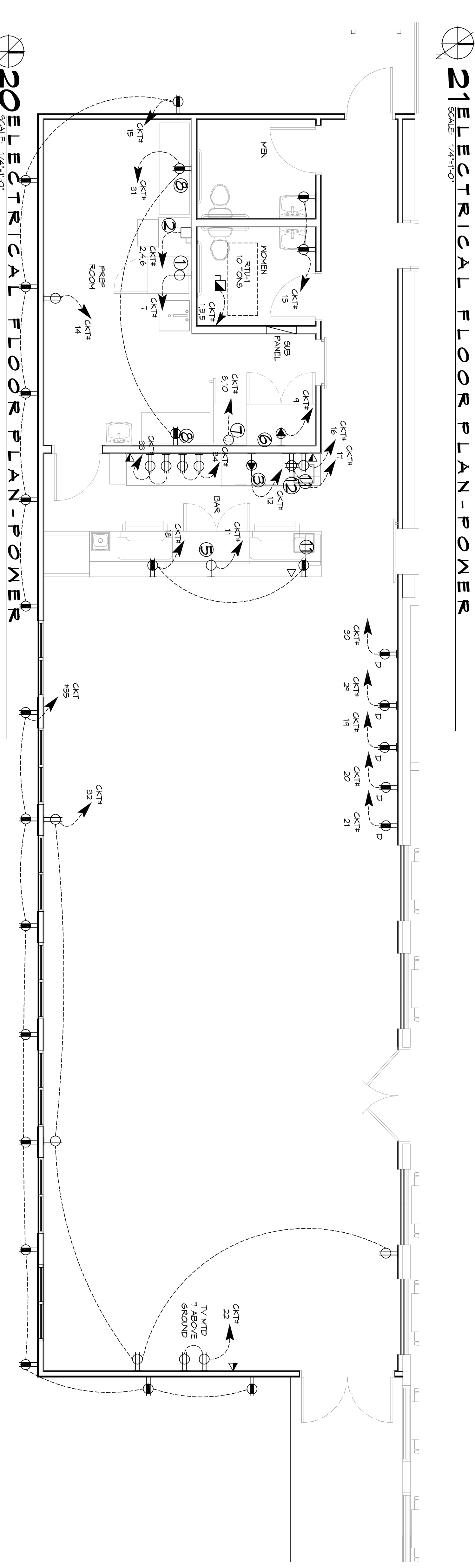
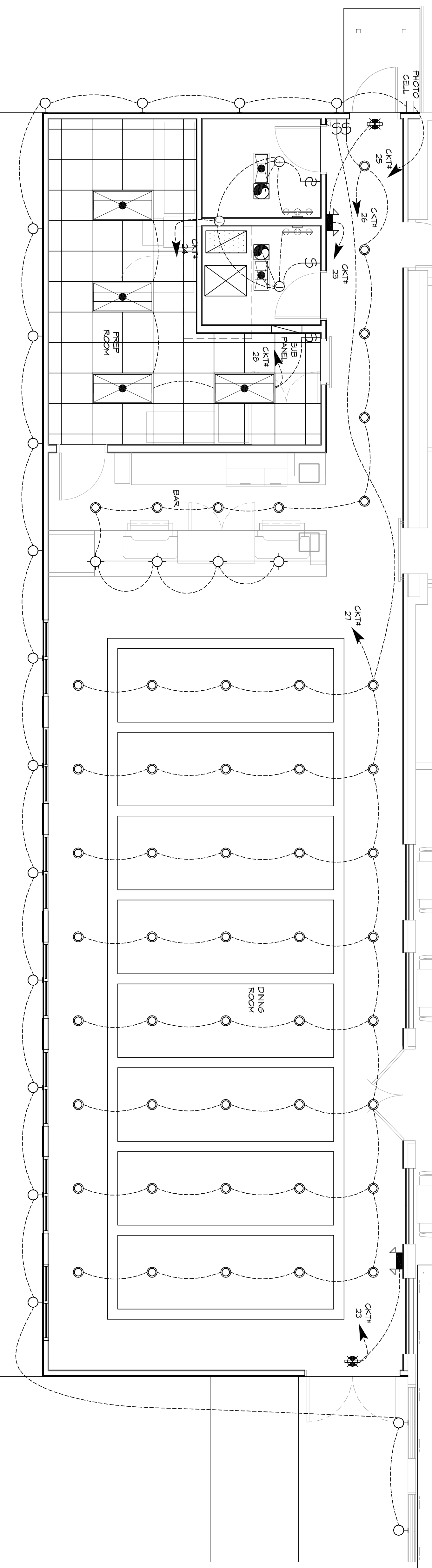


PANEL SCHEDULE			
NO.	DESCRIPTION	LOCATION	NO.
1	120/208V 3P/4W 400 AMP SERVICE DISC	PHOTO CELL	1
2	120/208V 3P/4W 400 AMP SERVICE DISC	PHOTO CELL	2
3	120/208V 3P/4W 400 AMP SERVICE DISC	PHOTO CELL	3
4	120/208V 3P/4W 400 AMP SERVICE DISC	PHOTO CELL	4
5	120/208V 3P/4W 400 AMP SERVICE DISC	PHOTO CELL	5
6	120/208V 3P/4W 400 AMP SERVICE DISC	PHOTO CELL	6
7	120/208V 3P/4W 400 AMP SERVICE DISC	PHOTO CELL	7
8	120/208V 3P/4W 400 AMP SERVICE DISC	PHOTO CELL	8
9	120/208V 3P/4W 400 AMP SERVICE DISC	PHOTO CELL	9
10	120/208V 3P/4W 400 AMP SERVICE DISC	PHOTO CELL	10
11	120/208V 3P/4W 400 AMP SERVICE DISC	PHOTO CELL	11
12	120/208V 3P/4W 400 AMP SERVICE DISC	PHOTO CELL	12
13	120/208V 3P/4W 400 AMP SERVICE DISC	PHOTO CELL	13
14	120/208V 3P/4W 400 AMP SERVICE DISC	PHOTO CELL	14
15	120/208V 3P/4W 400 AMP SERVICE DISC	PHOTO CELL	15
16	120/208V 3P/4W 400 AMP SERVICE DISC	PHOTO CELL	16
17	120/208V 3P/4W 400 AMP SERVICE DISC	PHOTO CELL	17
18	120/208V 3P/4W 400 AMP SERVICE DISC	PHOTO CELL	18
19	120/208V 3P/4W 400 AMP SERVICE DISC	PHOTO CELL	19
20	120/208V 3P/4W 400 AMP SERVICE DISC	PHOTO CELL	20
21	120/208V 3P/4W 400 AMP SERVICE DISC	PHOTO CELL	21
22	120/208V 3P/4W 400 AMP SERVICE DISC	PHOTO CELL	22
23	120/208V 3P/4W 400 AMP SERVICE DISC	PHOTO CELL	23
24	120/208V 3P/4W 400 AMP SERVICE DISC	PHOTO CELL	24
25	120/208V 3P/4W 400 AMP SERVICE DISC	PHOTO CELL	25
26	120/208V 3P/4W 400 AMP SERVICE DISC	PHOTO CELL	26
27	120/208V 3P/4W 400 AMP SERVICE DISC	PHOTO CELL	27
28	120/208V 3P/4W 400 AMP SERVICE DISC	PHOTO CELL	28
29	120/208V 3P/4W 400 AMP SERVICE DISC	PHOTO CELL	29
30	120/208V 3P/4W 400 AMP SERVICE DISC	PHOTO CELL	30
31	120/208V 3P/4W 400 AMP SERVICE DISC	PHOTO CELL	31
32	120/208V 3P/4W 400 AMP SERVICE DISC	PHOTO CELL	32
33	120/208V 3P/4W 400 AMP SERVICE DISC	PHOTO CELL	33
34	120/208V 3P/4W 400 AMP SERVICE DISC	PHOTO CELL	34
35	120/208V 3P/4W 400 AMP SERVICE DISC	PHOTO CELL	35
36	120/208V 3P/4W 400 AMP SERVICE DISC	PHOTO CELL	36
37	120/208V 3P/4W 400 AMP SERVICE DISC	PHOTO CELL	37
38	120/208V 3P/4W 400 AMP SERVICE DISC	PHOTO CELL	38
39	120/208V 3P/4W 400 AMP SERVICE DISC	PHOTO CELL	39
40	120/208V 3P/4W 400 AMP SERVICE DISC	PHOTO CELL	40
41	120/208V 3P/4W 400 AMP SERVICE DISC	PHOTO CELL	41
42	120/208V 3P/4W 400 AMP SERVICE DISC	PHOTO CELL	42
43	120/208V 3P/4W 400 AMP SERVICE DISC	PHOTO CELL	43
44	120/208V 3P/4W 400 AMP SERVICE DISC	PHOTO CELL	44
45	120/208V 3P/4W 400 AMP SERVICE DISC	PHOTO CELL	45



**23 ONE LINE DIAGRAM**  
SCALE: 3/16"=1'-0"



SYMB	POWER LEGEND	LIGHTING LEGEND	
⊖	STANDARD 120V/ DUPLEX RECEPTACLE NEMA 5-3 OR 15' AFF UNLESS OTHERWISE NOTED	⊖	STANDARD 120V/ DUPLEX RECEPTACLE - MOUNTED AT 30' AFF UNLESS OTHERWISE NOTED
⊖	SINGLE POLE DEDICATED RECEPTACLE	⊖	STANDARD 120V/ DUPLEX RECEPTACLE - MOUNTED AT 30' AFF UNLESS OTHERWISE NOTED
⊖	6FCI DUPLEX RECEPTACLE	⊖	STANDARD 120V/ DUPLEX RECEPTACLE - MOUNTED AT 30' AFF UNLESS OTHERWISE NOTED
⊖	240V RECEPTACLE - MOUNTED AT 30' AFF UNLESS OTHERWISE NOTED	⊖	STANDARD 120V/ DUPLEX RECEPTACLE - MOUNTED AT 30' AFF UNLESS OTHERWISE NOTED
⊖	WEATHER-PROOF 6FCI DUPLEX RECEPTACLE MOUNTED AT 30' AFF UNLESS OTHERWISE NOTED	⊖	STANDARD 120V/ DUPLEX RECEPTACLE - MOUNTED AT 30' AFF UNLESS OTHERWISE NOTED
⊖	JUNCTION BOX	⊖	STANDARD 120V/ DUPLEX RECEPTACLE - MOUNTED AT 30' AFF UNLESS OTHERWISE NOTED
⊖	EXHAUST FAN - SEE MECH	⊖	STANDARD 120V/ DUPLEX RECEPTACLE - MOUNTED AT 30' AFF UNLESS OTHERWISE NOTED
⊖	3 BULB LED RESTROOM LIGHT FIXTURE	⊖	STANDARD 120V/ DUPLEX RECEPTACLE - MOUNTED AT 30' AFF UNLESS OTHERWISE NOTED
⊖	2x4 - 4 - FLUORESCENT	⊖	STANDARD 120V/ DUPLEX RECEPTACLE - MOUNTED AT 30' AFF UNLESS OTHERWISE NOTED
⊖	1x2 - FLUORESCENT (RESTROOMS)	⊖	STANDARD 120V/ DUPLEX RECEPTACLE - MOUNTED AT 30' AFF UNLESS OTHERWISE NOTED
⊖	6" RECESSED LED CAN LIGHT (IC-RATED)	⊖	STANDARD 120V/ DUPLEX RECEPTACLE - MOUNTED AT 30' AFF UNLESS OTHERWISE NOTED

NO.	EQUIPMENT LIST
1	SINGLE DOOR FREEZER 2FT
2	DISHWASHER
3	MUG CHILLER
4	SPEED RAIL/ ICE 30"
5	BEER COOLER 60"
6	DOUBLE DOOR REFRIGERATOR 54"
7	PREP TABLES 12' x 54"
8	MUG RACK
9	UNDER COUNTER TRASH CAN
10	P.O.S.
11	AV EQUIPMENT BOX (ON WALL)
12	HAND SINK
13	WATER HEATER
14	UTILITY SINK
15	ICE MACHINE

**GENERAL NOTES**

- ALL WORK SHALL CONFORM TO THE LATEST EDITION OF THE NATIONAL ELECTRICAL CODE, THE GOVERNING ELECTRICAL CODE AND ALL OTHER APPLICABLE CODES AND REGULATIONS. CERTAIN SPECIFICATIONS OR APPROVAL WHERE REQUIRED. ELECTRICAL CONTRACTOR SHALL VERIFY ALL MATERIALS AND CONDUIT SIZES FOR MECHANICAL EQUIPMENT TO BE INSTALLED. ALL MATERIALS FINISHED SHALL BE NEMA AND SHALL BE ILL. LISTED. THE DRAWINGS INDICATE SIZE AND GENERAL LOCATION OF WORK. SCALE DIMENSIONS SHALL NOT BE USED. THE EXACT LOCATION OF ALL LIGHTING FIXTURES, RECEPTACLES AND TELEPHONE OUTLETS ETC. SHALL BE DETERMINED BY ACTUAL CONDITIONS IN THE FIELD.
- THE CONTRACTOR SHALL VERIFY THE JOB SITE AND FAMILIARIZE HIMSELF WITH THE EXISTING CONDITIONS.
- ELECTRICAL CONTRACTOR SHALL COORDINATE HIS WORK WITH OTHER TRADES AND WITH OTHER CONTRACTORS WHOSE WORK MAY AFFECT THIS INSTALLATION.
- ELECTRICAL CONTRACTOR SHALL COORDINATE NEARBY ELECTRICAL INSTALLATIONS WITH THE EXISTING CONDITIONS.
- ELECTRICAL CONTRACTOR SHALL INCLUDE IN HIS BID ALL CHARGES AND FEES INCURRED IN MODIFICATIONS.
- ELECTRICAL CONTRACTOR SHALL COORDINATE WITH THE TELEPHONE COMPANY AND THE GENERAL CONTRACTOR.
- ELECTRICAL CONTRACTOR, BEFORE INSTALLING ANY OF THE WORK, SHALL SEE THAT IT DOES NOT INTERFERE WITH CLEARANCES REQUIRED FOR FINISHED CEILING, HUNG CEILING, PLASTER PARTITIONS, WALLS, ETC. AS SHOWN IN THE ARCHITECTURAL DRAWINGS AND DETAILS. IF ANY WORK IS INSTALLED IN THE ARCHITECTURAL DRAWINGS THAT SUCH DETAILS OR DESIGN CANNOT BE FOLLOWED, THE CONTRACTOR AT HIS OWN EXPENSE SHALL MAKE SUCH CHANGES IN THE INSTALLATION OF THE ARCHITECTURAL WORK AS SHOWN ON THE PLANS AND DETAILS.
- PERFORM TEST REQUIRED BY THE OWNER OR THE ENGINEER. IN CONNECTION WITH THE OPERATION OF THE ELECTRICAL SYSTEM IN THE BUILDING. ALL TESTS SHALL BE MADE IN ACCORDANCE WITH THE LATEST STANDARD OF THE IEEE AND THE NATIONAL ELECTRICAL CODE.
- MINIMUM CONDUCTOR SIZE SHALL BE #12 600V INSULATION MINIMUM SIZE CONDUIT SHALL BE 3/4" ELECTRICAL VERTICAL TRUBING (EVT) FOR INTERIOR USE. 1/2" RIGID ALUMINUM FOR EXTERIOR USE ABOVE GRADE AND 1" SCHEDULE 40 PVC BURIED MINIMUM OF 18" FOR NON-VEHICULAR TRAFFIC AREAS. FOR CONDUIT RUNS IN SINKS, ROOMS, UNDER FLOOR, 1 1/2" RIGID PVC OR 1 1/2" CONDUIT SHALL BE USED. ROOMS SHALL BE 1 1/2" RIGID PVC OR 1 1/2" CONDUIT SHALL BE USED. ALL CONDUIT SHALL BE INSTALLED ABOVE PROTECTED CEILING. INTERIOR FITTINGS SHALL BE CAST WHERE EXPOSED ON WALLS AND EXTERIOR FITTINGS SHALL BE CAST BOXES WITH NEMA 3R COVERS.
- CONTRACTOR SHALL INSTALL WIRING AND OTHER CIRCUIT COMPONENTS TO MATCH EQUIPMENT ACTUALLY INSTALLED.
- ALL 120V RINGS LONGER THAN 60 FEET SHALL BE #10 AWG AND 270V RINGS LONGER THAN 150 FEET SHALL BE #10 AWG UNLESS NOTED OTHERWISE.
- INSTALL GROUND FAULT RECEPTACLES AT RECEPTACLE LOCATIONS WITHIN 5' OF SINKS OR LAVATORIES AND AT EXTERIOR LOCATIONS. EXTERIOR RECEPTACLES SHALL ALSO BE WATERPROOF. ALL RECEPTACLES IN THE KITCHEN AREA SHALL HAVE GROUND FAULT PROTECTION.
- BONDING AND GROUNDING SHALL BE IN ACCORDANCE WITH NFPA 70:250-65, NFPA 70:250-25, 250-71 & 250-72.
- GROUND NEUTRAL IN ACCORDANCE WITH NFPA 70:250-230.
- FUSES SHALL BE TTT CLASS K5, 250 VOLT, 200,000 AMP INTERRUPTING CAP. PROVIDE SERVICES OF A FIRE SMOKE DETECTION AND ALARM COMPANY TO DESIGN AND INSTALL ALARM SYSTEM TO MEET REQUIREMENTS OF THE STATE FIRE MARSHALL AND THE FIRE DISTRICT.
- EXTERIOR LIGHTING SHALL BE SHAWD OR INWARDLY DIRECTED IN SUCH A MANNER SO THAT NO DIRECT LIGHTING OR GLARE IS CAST BEYOND THE FOOTPRINT OF THE BUILDING. EXTERIOR LIGHTING SHALL NOT EXCEED ONE FOOT CANDLE AT THE BUILDING EXTERIOR WALL.
- ALL ELECTRICAL RESISTANT AND BURNING PREVENTING FIRE PARTITIONS SHALL BE SEALED WITH A MATERIAL CAPABLE OF RESISTING THE PASSAGE OF FLAMES AND HOT GASES WHEN TESTED IN ACCORDANCE WITH ASTM-E814.
- VERIFY ELECTRICAL CONNECTIONS PER MANUFACTURERS RECOMMENDATIONS.

**GENERAL LIGHTING**

- ALL WORK SHALL COMPLY WITH APPLICABLE NATIONAL, STATE, AND SERVICE UTILITY COMPANY AND REQUIREMENTS OF THE GENERAL CONTRACTOR SHALL NOTIFY THE ARCHITECT IMMEDIATELY IF ANY CONFLICTS OCCUR BETWEEN LIGHTING AND ANY OTHER TRADE DO NOT PROCEED WITH INSTALLATION IN THAT AREA UNTIL CONFLICT HAS BEEN RESOLVED TO THE SATISFACTION OF THE ARCHITECT AND ENGINEER.
- REFER TO ARCHITECTURAL DRAWINGS FOR EXACT LOCATION AND MOUNTING INSTRUCTIONS FOR ALL LIGHT FIXTURES. NOTIFY THE ARCHITECT AND ENGINEER OF ANY DISCREPANCIES BETWEEN THESE PLANS AND THE ARCHITECTURAL PLANS RELATING TO QUANTITY, TYPE AND LOCATION OF DEVICES AND FIXTURES.
- WHERE LIGHT FIXTURES HAVE BEEN SPECIFIED IN THE DRAWINGS AND APPROVED BY THE ARCHITECT, THE CONTRACTOR SHALL BE RESPONSIBLE FOR THE SELECTION OF THE LIGHTING FIXTURES TO BE USED. ALL CONDUCTORS SHALL BE A MINIMUM OF #12 AWG UNLESS NOTED OTHERWISE.
- ALL 120V RINGS LONGER THAN 60 FEET SHALL BE #10 AWG AND 270V RINGS LONGER THAN 150 FEET SHALL BE #10 AWG UNLESS NOTED OTHERWISE.
- ALL CONDUCTORS SHALL BE COPPER.
- WHERE CONDUCTOR SIZES ARE NOTED ON DRAWINGS, THAT WIRE SIZE SHALL BE THROUGH THE ENTIRE RUN UNLESS OTHERWISE NOTED. ARCHITECTURAL DRAWINGS.
- WHERE MORE THAN ONE SWITCH OCCURS IN THE SAME LOCATION, THEY SHALL BE INSTALLED IN A GANG TYPE BOX UNDER ONE COVER PLATE. ALL GANGED SWITCHES SHALL HAVE A COMMON SEWABLES FACER PLATE. EACH MULTIGANGED BOX SHALL BE NO MORE THAN SIX (6) SWITCHES WIDE. WHERE MORE THAN SIX (6) SWITCHES ARE SHOWN, STAGGERED VERTICALLY AND THE WIDTH OF THE MULTIGANGED BOX SHALL BE AS EVEN AS POSSIBLE.
- EACH DIMMER SWITCH SHALL HAVE A WATTAGE RATING 25% HIGHER THAN THE TOTAL WATTAGE OF ALL LIGHTS TO BE CONTROLLED BY THE DIMMER. DIMMER SIZES 600, 1000, 1500, AND 2000 WATTS. LUTRON NOVA T-STAR. WHERE SWITCHES ARE GANGED WITH DIMMERS, THE LOW VOLTAGE DIMMERS SHALL BE LUTRON NOVA T-STAR. FLUORESCENT AND WHERE FLUORESCENT FIXTURES ARE SHOWN TO BE DIMMED, THE DIMMER SHALL HAVE THE DIMMER BALLASTS WHICH ARE DIMMABLE WITH THE DIMMER DIMMERS.
- WHERE LED DIMMERS ARE SHOWN TO BE DIMMED, THE DIMMER SHALL BE DIMMABLE WITH THE DIMMER DIMMERS DESCRIBED OR PROVIDED.
- ALL EXTERIOR LIGHT FIXTURES SHALL HAVE 50 MINUTE BATTERY BACKUP WITH INTEGRAL TEST BUTTON AND SHALL BURN CONTINUOUSLY.
- ALL FLUORESCENT FIXTURES THAT UTILIZE DOUBLE-ENDED LAMPS AND MEANS IN ACCORDANCE WITH NEC 410.73C.

**DAMMON ENGINEERING INC.**  
LOUISIANA & MISSISSIPPI

Chief Engineer: Brian Mstich, PE  
554 Old Spanish Trail  
Slidell, LA 70458

www.dammonengineering.com  
info@dammonengineering.com  
PH: 985.649.5832

NO.	DESCRIPTION	DATE

**SOUTHSIDE CAFE**  
9154 PONTCHARTRAIN DR  
SLIDELL, LA 70458

DATE: 01-08-2019  
DRAWN BY: JAVM  
CHECKED BY: JAVM

SHEET TITLE: POWER AND LIGHTING FLOOR PLAN  
DRAWING NUMBER: E101  
SHEET NO.: 15 OF 15