

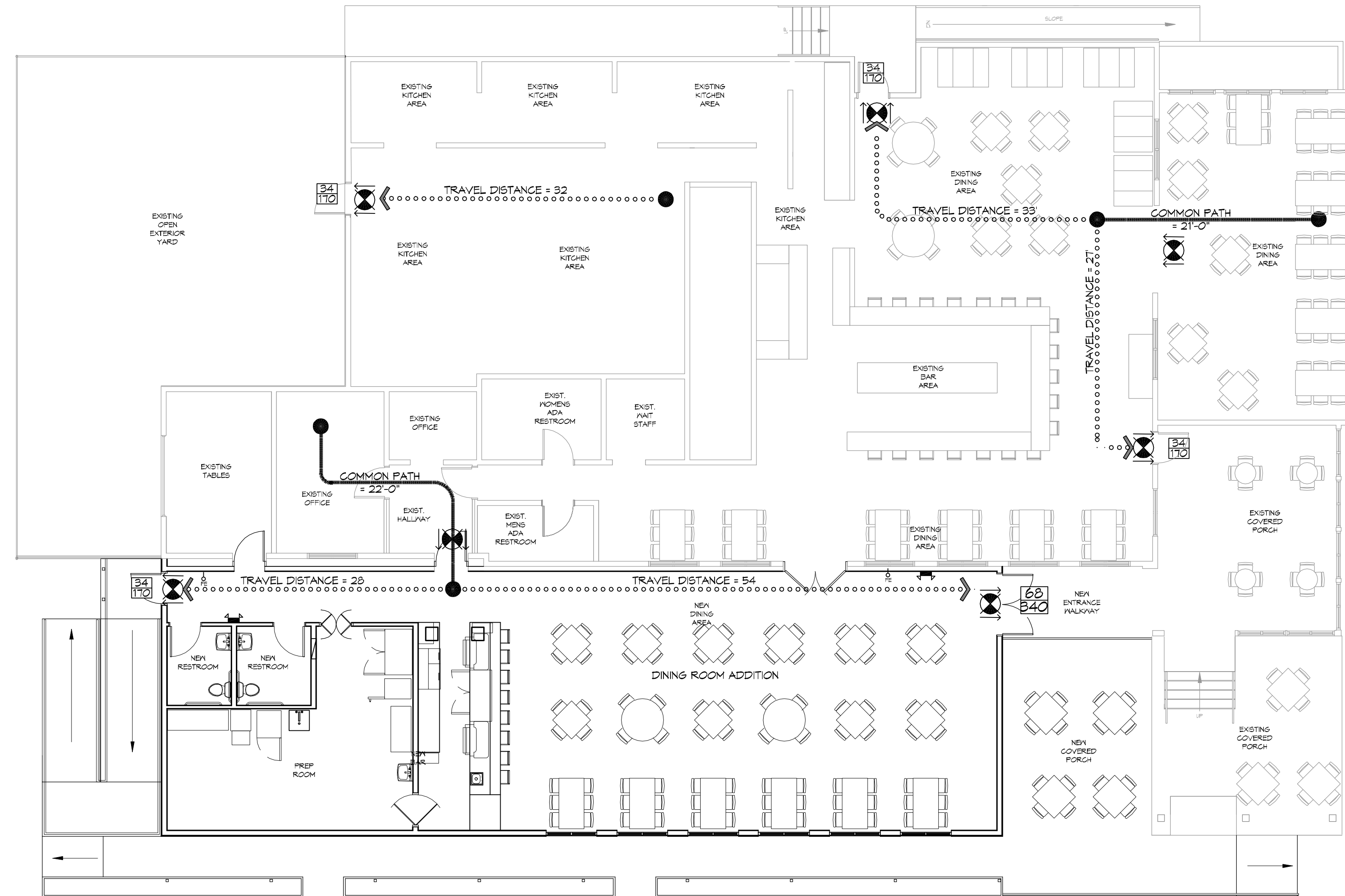
LIFE-SAFETY INFORMATION	
APPLICABLE CODES NFPA 101 LIFE-SAFETY CODE 2015	
OCCUPANCY A-2, ASSEMBLY USES INTENDED FOR FOOD AND DRINK CONSUMPTION (RESTAURANTS); CONSTRUCTION TYPE II B	
BUSINESS (CHAPTER 98)	
MIXED OCCUPANCY	(REFERENCE CHAPTER 6)
OCCUPANT LOAD FACTOR	(REFERENCE TABLE 7.3.1.2)
1044 S.F. NET	ASSEMBLY WITHOUT FIXED SEATS - UNCONCENTRATED (TABLES AND CHAIRS) - 15 NET/100 SF PER OCCUPANT =
TOTAL OCCUPANTS = 107	
CLASSIFICATION OF HAZARD OF CONTENTS (REFERENCE: OCCUPANCY CHAPTER AND 6.2.2; SPECIFY LOW, ORDINARY, OR HIGH)	
CONSTRUCTION TYPE(S) (REFERENCE: CHAPTER 6, TABLE A.8.2.1.2 AND COMMENTARY TABLE B.1 IN HANDBOOK)	
IB	
MINIMUM EXIT SEPARATION DISTANCE FOR REMOTELY LOCATED EXITS (REFERENCE: SECTION 7.5; SPECIFY 1/2 OR 1/3 DIAGONAL DISTANCE OF AREA SERVED)	
1/2 DIAGONAL =	N/A
MAXIMUM DEAD-END CORRIDORS	(REFERENCE: OCCUPANCY CHAPTER AND TABLE A.7.6)
MAXIMUM COMMON PATH OF TRAVEL DISTANCE	(REFERENCE: OCCUPANCY CHAPTER AND TABLE A.7.6)
MAXIMUM TRAVEL DISTANCE TO EXITS	(REFERENCE: OCCUPANCY CHAPTER AND TABLE A.7.6)
MAIN ENTRANCE MUST BE SIGNED TO ACCOMMODATE 1/2 OCCUPANT LOAD OF BUILDING	
EXTINGUISHMENT REQUIREMENTS	SPRINKLER (NOT REQUIRED)
DETECTION, ALARM, AND COMMUNICATION SYSTEMS	NO
ALLOWABLE HEIGHT AND BUILDING AREA	PER IBC EQUIVALENT CONSTRUCTION TYPE

BUILDING CODE INFORMATION	
APPLICABLE CODES IBC 2015	
OCCUPANCY A-2, ASSEMBLY USES INTENDED FOR FOOD AND DRINK CONSUMPTION (RESTAURANTS) (IBC 2015 CHAPTER 10)	
OCCUPANT LOAD CALCULATIONS	(TABLE 1004.1.2)
ASSEMBLY WITHOUT FIXED SEATS - UNCONCENTRATED (TABLES AND CHAIRS)	15 NET TO OCCUPANTS
TOTAL OCCUPANTS	107
CONSTRUCTION TYPE(S)	(TABLE 503)
II B (SECTION 503)	
ALLOWABLE HEIGHT AND BUILDING AREA LIMITED BY TYPE OF CONSTRUCTION	
MAXIMUM HEIGHT IN STORIES (SECTION 503 & 504, TABLE 503)	2
MAXIMUM AREA IN SQUARE FEET (SECTION 503, 506 & 507, TABLE 503)	9,500

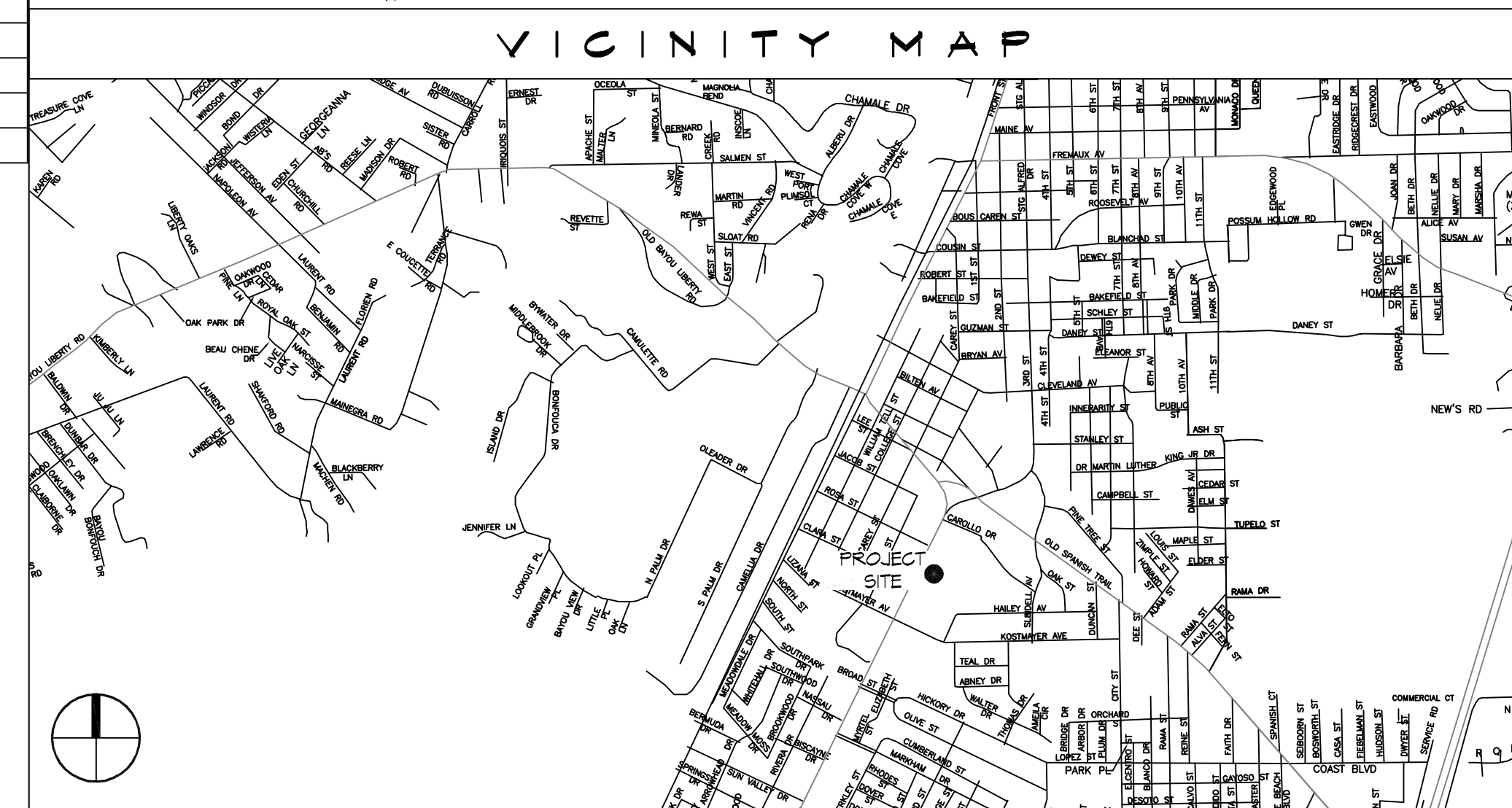
WIND SPEED DESIGN REQUIREMENTS	
THIS BUILDING SHALL BE DESIGNED WITH IBC SEC 1609 AS A FULLY ENCLOSED BLDG USING THE FOLLOWING INFORMATION:	
WIND DESIGN DATA:	
DETERMINATION OF WIND LOADS SHALL BE IN ACCORDANCE WITH IBC SEC 1609.3 (A), (B), OR (C) DEPENDING ON THE RISK CATEGORY	
BASIC WIND SPEED (3 SECOND GUST) =	132 MPH (IBC FIG 1609C)
RISK FACTOR: CATEGORY I BLDG	SURFACE ROUGHNESS = C
TOPOGRAPHIC FACTOR = 1	EXPOSURE = C
DESIGN WIND PRESSURE (ASCE 7-10 TABLE 28.6-1):	34.7 PSF
INTERNAL PRESSURE COEFFICIENT (ASCE 7-10 TABLE 26.11-1):	± 0.18
LIVE LOADS (IBC SEC 1607)	
STORAGE, LIGHT (IBC TABLE 1607.1):	125 PSF
ROOF LIVE LOADS (IBC TABLE 1607.1):	20 PSF UNIFORM, 300 LB CONCENTRATED
SNOW LOADS (IBC TABLE 1609):	
GROUND SNOW LOAD (IBC FIG 1608.2):	5 PSF

FLOOD ZONE INFORMATION		
BASED ON THE SURVEY OF THIS PROPERTY BY ACADIA LAND SURVEYING LLC, THIS PROPERTY IS IN SPECIAL FLOOD HAZARD AREA. F.I.R.M. COMMUNITY MAP NO 225204 0010 C		
FLOOD ZONE:	AE	BASE FLOOD ELEVATION NGVD 9.0'
ELEVATIONS REFER TO NGVD 1929 DATUM		

LIFE-SAFETY LEGEND	
SYMBOL	DESCRIPTION
	EXITS
	DOOR FIRE RATING (MINUTES)
	DOOR WIDTH/EGRESS CAPACITY
	EXIT LIGHT
	FIRE EXTINGUISHER IV WALL MTD BRACKET
	COMMON PATH OF TRAVEL
	TRAVEL DISTANCE
	DECISION POINT



LIFE-SAFETY PLAN  
SCALE: 1/8" = 1'-0"



SHEET INDEX	
SHEET #	SHEET TITLE
G101	GENERAL INFORMATION SHEET
G102	ACCESSIBILITY INFORMATION
C101	SITE PLAN
S101	FOUNDATION PLAN AND DETAILS
S102	TYPICAL CONNECTION DETAILS, SCHEDULES, AND NOTES
D100	DEMOLITION PLAN
A101	OVERALL FLOOR PLAN
A102	FLOOR PLAN
A103	BAR FLOOR PLAN
A104	REFLECTED CEILING PLAN
A105	ROOF PLAN
A106	EXTERIOR ELEVATIONS
P101	PLUMBING PLAN
M101	MECHANICAL FLOOR PLAN, SCHEDULES & DETAILS
E101	POWER AND LIGHTING PLAN

GENERAL NOTES	
1.	ALL MATERIALS AND WORK, INCIDENTAL TO THE CONSTRUCTION OF THIS PROJECT, SHALL CONFORM TO ALL GOVERNING CODES, AND REGULATIONS OF AGENCIES IN AUTHORITY.
2.	CONTRACTOR SHALL PROVIDE ALL PUBLIC PROTECTIONS NECESSARY AS REQUIRED BY LAW.
3.	THE DRAWINGS AND ANY SUBSEQUENTLY ISSUED ADDENDA, AMENDMENTS OR SUCH CHANGE ORDERS APPROVED BY THE OWNER AND THE CONTRACTOR ARE PART OF THESE CONTRACT DOCUMENTS.
4.	DO NOT SCALE DRAWINGS. CONSULT WITH THE ENGINEER REGARDING ANY ITEMS IN THE CONTRACT DOCUMENTS THAT REQUIRE CLARIFICATION.
5.	TRASH SHALL BE REMOVED FROM THE SITE NOT LESS THAN TWICE MONTHLY.
6.	THE GENERAL CONTRACTOR SHALL VERIFY EXISTING CONDITIONS PRIOR TO COMMENCING WORK AND REPORT ANY AND ALL DISCREPANCIES TO THE ARCHITECT.
7.	CONTRACTOR VEHICLES AND EQUIPMENT NECESSARY FOR CONSTRUCTION MAY BE PARKED ON THE SITE. OTHER VEHICLES PARKED ON THE SITE REQUIRE THE OWNER'S PERMISSION.
8.	ALL MATERIALS/EQUIPMENT SHALL BE INSTALLED PER MANUFACTURER'S RECOMMENDATIONS. WORK NOT CONSISTENT WITH MANUFACTURER'S RECOMMENDATIONS WILL BE REJECTED BY OWNER/ARCHITECT.

**DAMMON ENGINEERING, INC.**  
LOUISIANA & MISSISSIPPI

Chief Engineer: Brian Mitchell, PE  
www.dammonengineering.com  
554 Old Spanish Trail  
Bossier City, LA 70098  
info@dammonengineering.com  
PH: 985.494.2822

REVISIONS	DATE
#	DESCRIPTION

SEAL:

NEW DINING ADDITION  
**SOUTHSIDE CAFE**

8154 FORTCHARTRAIN DR  
SLIDELL, LA 70460

JOB NO: 2254 DATE: 02-07-2016  
DRAWN BY: JMS  
CHECKED BY: GKD

SHEET TITLE:  
GENERAL INFORMATION SHEET

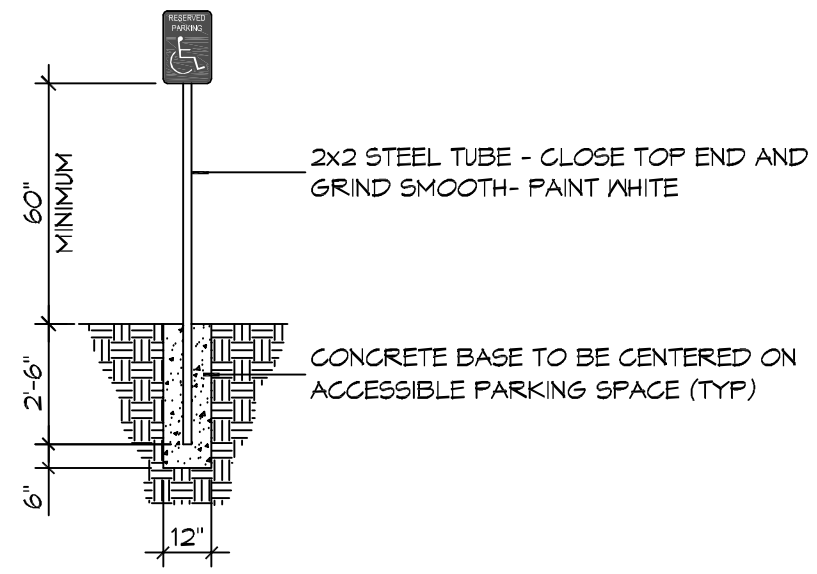
DRAWING NUMBER:  
**G101**

SHEET No: 1 of 15



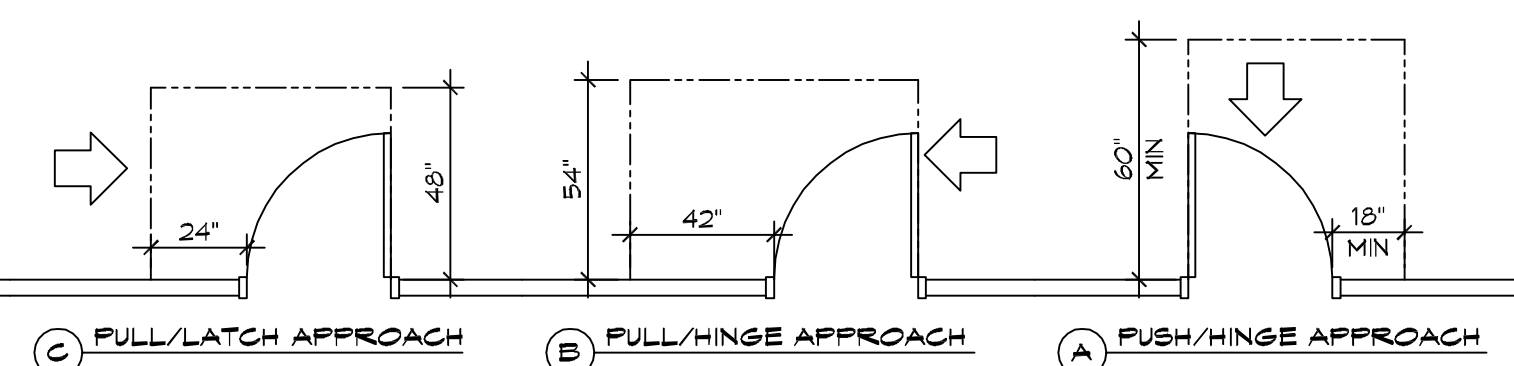
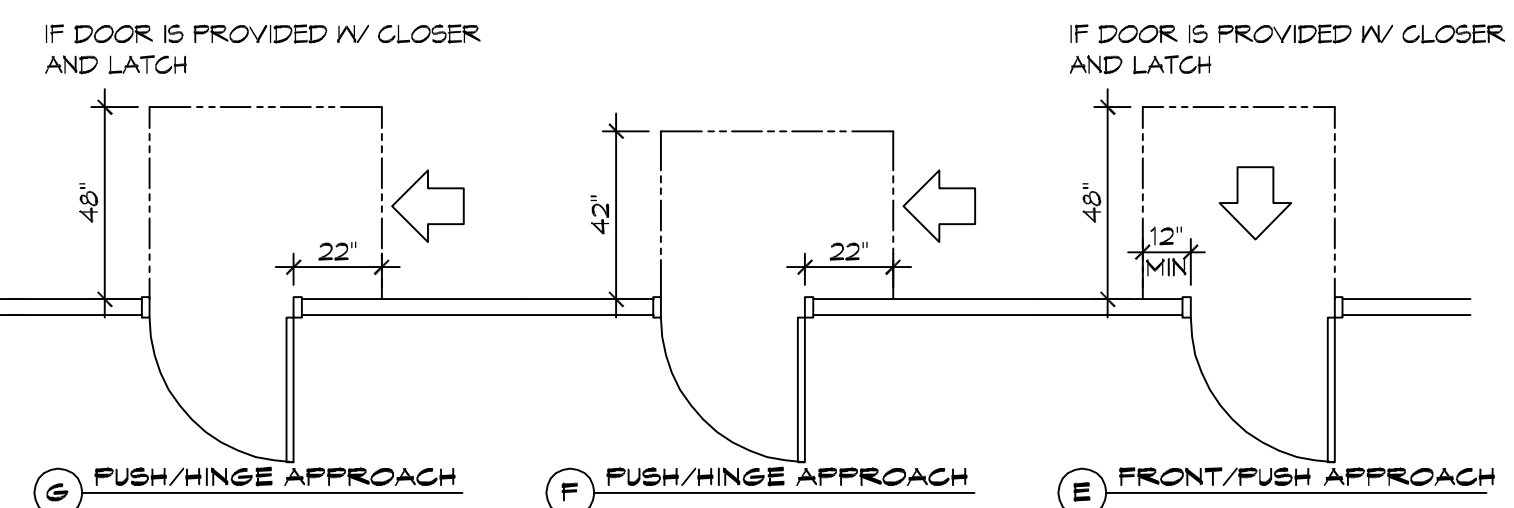
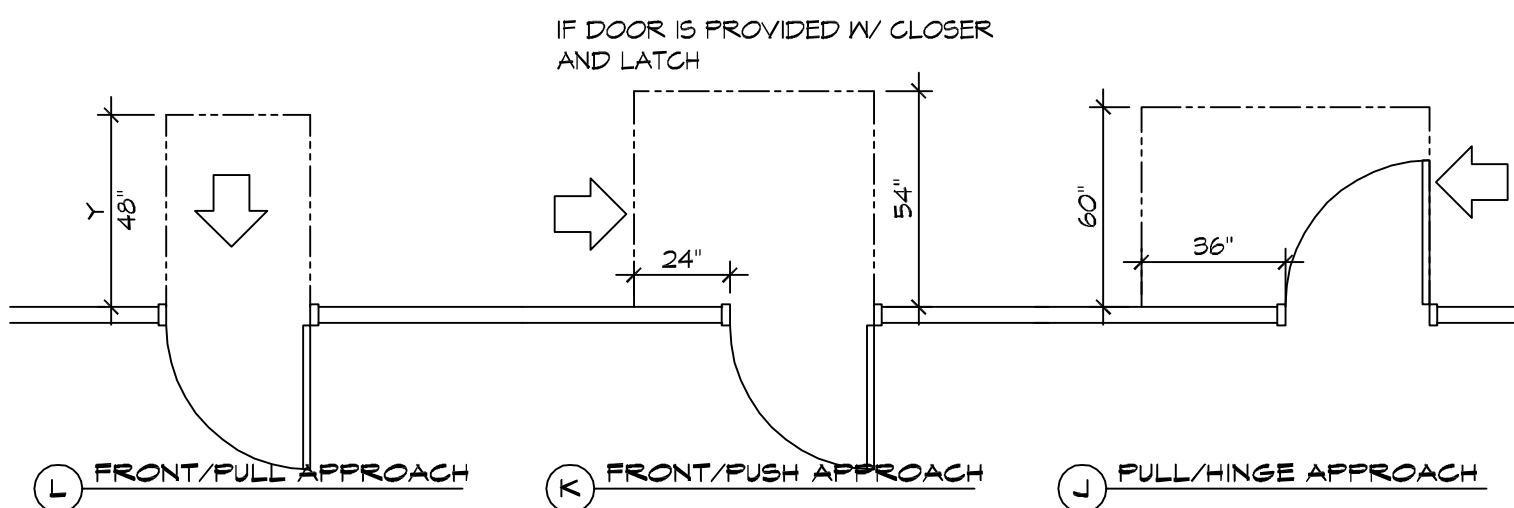
9 GA SHEET METAL MOUNT WITH (3) CHROME ROUND HEAD SCREWS (WHITE BACKGROUND)

SILK SCREEN INTERNATIONAL HC SYMBOL (WHITE ON BLUE BACKGROUND)



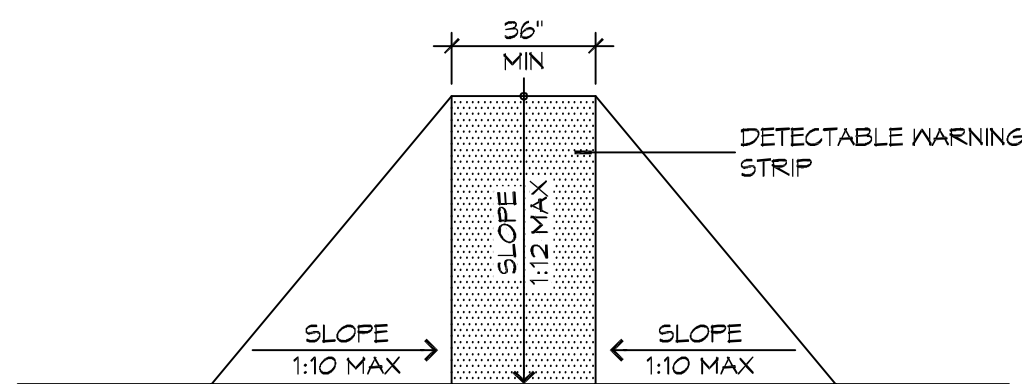
### 5 ACCESSIBLE SIGN

SCALE: NTS

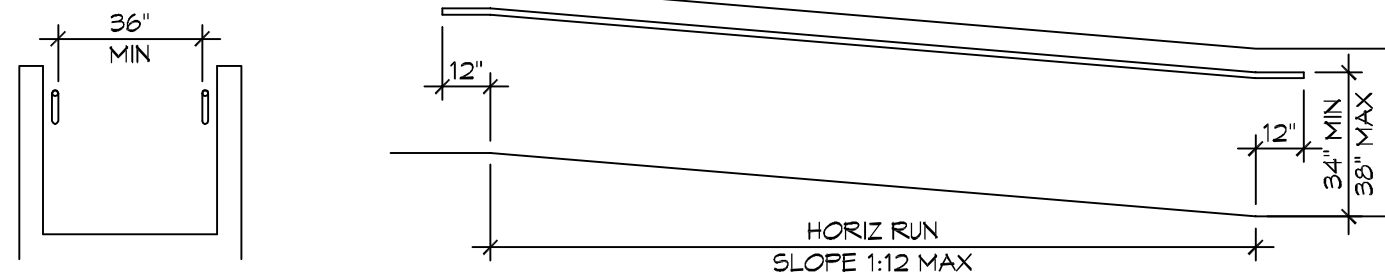


### 3 ADA DOOR CLEARANCES

SCALE: 1/4" = 1'-0"



F FLARED RAMPS

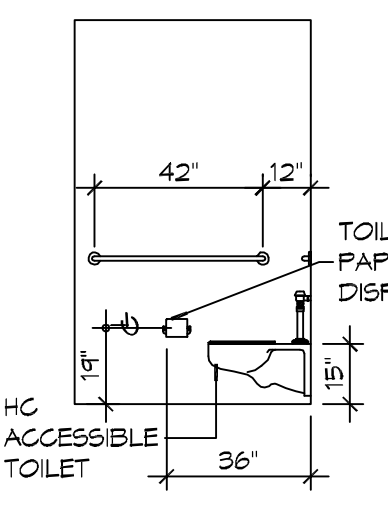


D WALL EDGE PROTECTION

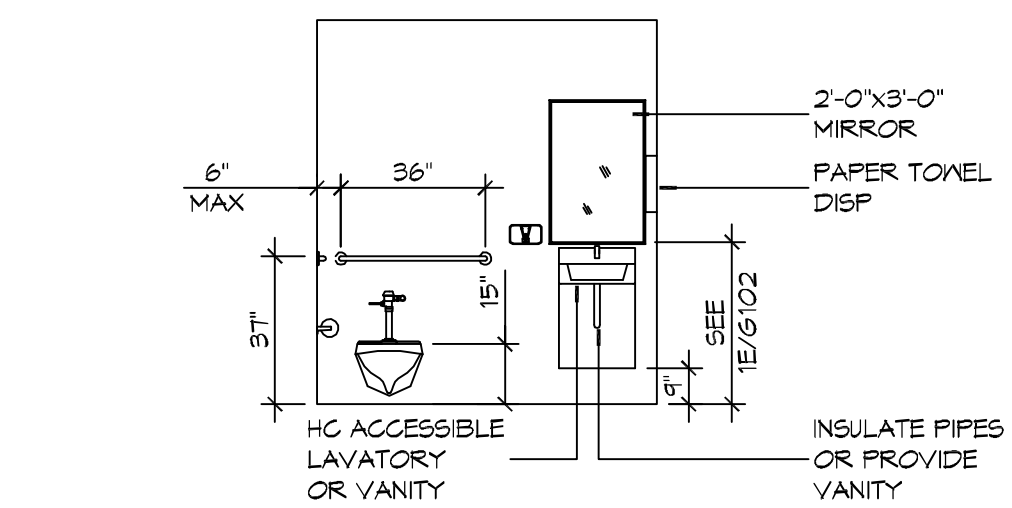
B EXTENDED SURFACE EDGE PROTECTION

### 4 ACCESSIBLE RAMPS

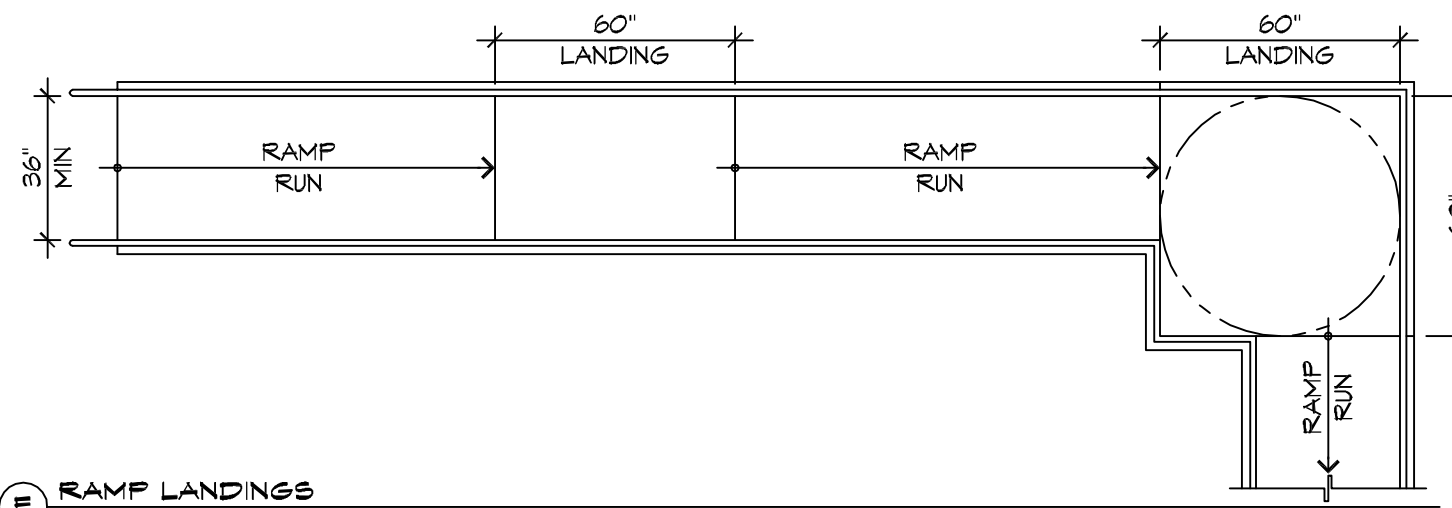
SCALE: 1/4" = 1'-0"



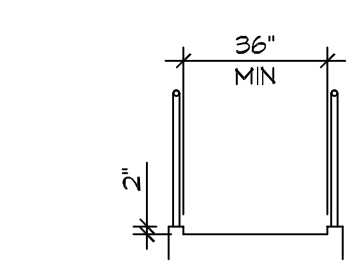
D INTERIOR ELEVATION



C INTERIOR ELEVATION

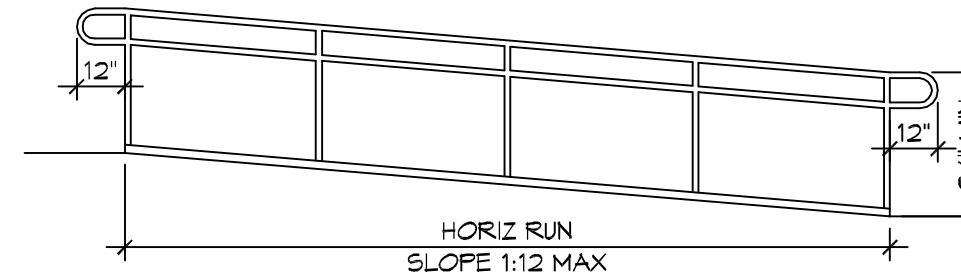


E RAMP LANDINGS

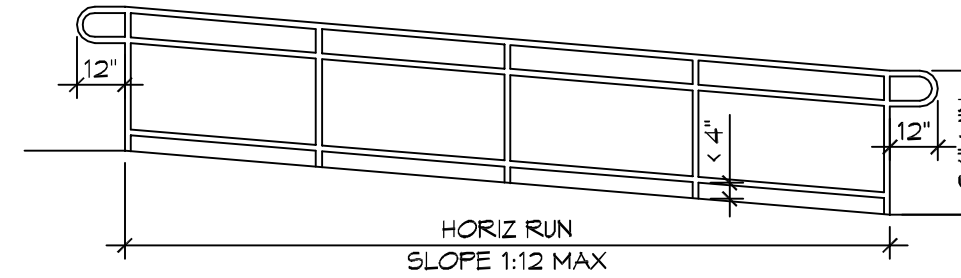


C CURB EDGE PROTECTION

A BARRIER EDGE PROTECTION



HORIZ RUN SLOPE 1:12 MAX



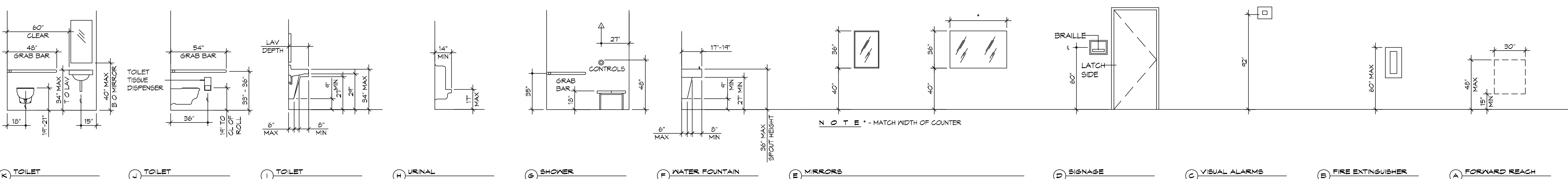
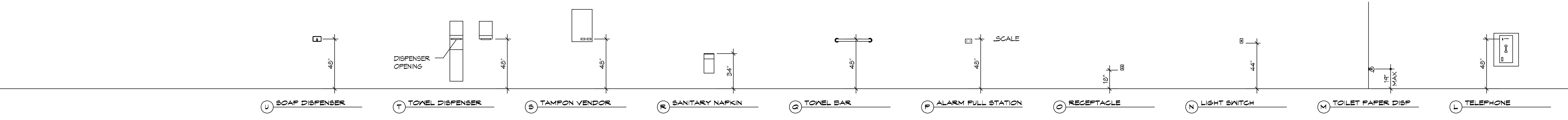
HORIZ RUN SLOPE 1:12 MAX

### ACCESSIBILITY NOTES

**DOOR CLEARANCE NOTES**  
 ALCOVES SHALL COMPLY WITH THE CLEARANCES FOR FRONT APPROACHES. 3/8/102 - 3K/6/102.  
 DOOR HARDWARE SHALL BE LEVER TYPE.  
 MAX DOOR OPENING FORCE:  
 INTERIOR HINGED DOORS: 5 LBF  
 EXTERIOR HINGED DOORS: 8.5 LBF  
 SLIDING OR FOLDING DOORS: 5 LBF  
 FIRE DOORS SHALL HAVE THE MINIMUM OPENING FORCE ALLOWABLE BY THE APPROPRIATE ADMINISTRATIVE AUTHORITY.  
 HARDWARE REQUIRED FOR ACCESSIBLE DOOR PASSAGE SHALL BE MOUNTED NO HIGHER THAN 48" AND NOT LESS THAN 34" ABOVE FINISHED FLOOR.  
 THE FLOOR OR GROUND AREA WITHIN THE REQUIRED CLEARANCES SHALL BE LEVEL AND CLEAR.  
 THRESHOLDS AT DOORWAYS SHALL NOT EXCEED 3/4" IN HEIGHT FOR EXTERIOR SLIDING DOORS OR 1/2" FOR OTHER TYPES OF DOORS. RAISED THRESHOLDS AND FLOOR LEVEL CHANGES AT ACCESSIBLE DOORWAYS SHALL BE BEVELED WITH A SLOPE NO GREATER THAN 1:2.  
 DOORWAYS SHALL HAVE A MINIMUM CLEAR OPENING OF 32" WITH THE DOOR OPEN 90°, MEASURED BETWEEN THE FACE OF THE DOOR AND THE OPPOSITE STOP. OPENINGS MORE THAN 24" IN DEPTH SHALL MAINTAIN 32" MIN CLEARANCE.  
**RAMP NOTES**  
 THE CLEAR SPACE BETWEEN THE HANDRAIL AND THE WALL SHALL BE MIN 1'-1/2" CLEAR.  
 GRIPPING SURFACES SHALL BE CONTINUOUS AND UNOBSTRUCTED.  
 ENDS OF HANDRAILS SHALL BE EITHER ROUNDED OR RETURNED SMOOTHLY TO FLOOR, WALL, OR POST.  
 HANDRAILS SHALL NOT ROTATE WITHIN THEIR FITTINGS.  
 THE CROSS SLOPE OF RAMP SURFACES SHALL BE NO GREATER THAN 1:50.  
 OUTDOOR RAMPS AND THEIR APPROACHES SHALL BE DESIGNED SO THAT WATER WILL NOT ACCUMULATE ON WALKING SURFACES.  
 RAMPS AND LANDINGS WITH DROP-OFFS SHALL HAVE CURBS, WALLS, RAILINGS, OR PROJECTING SURFACES THAT PREVENT PEOPLE FROM SLIPPING OFF THE RAMP. CURBS SHALL BE A MINIMUM OF 2" HIGH.  
 HANDRAILS SHALL BE PROVIDED ALONG BOTH SIDES OF RAMP SEGMENTS. THE INSIDE HANDRAIL ON SWITCHBACK OR DOGLEG RAMPS SHALL ALWAYS BE CONTINUOUS.  
 RAMP LANDINGS SHALL BE AT LEAST AS WIDE AS THE RAMP RUN LEADING TO IT.

### GENERAL SITE ACCESSIBILITY NOTES

1. ACCESSIBILITY SIGNAGE SHALL COMPLY WITH ADAAG 2010 GUIDELINES SECTION 103.1.
2. SEE SHEET 0003 FOR ACCESSIBLE RAMP AND HANDRAIL DESIGNS WHERE THEY OCCUR.
3. ALL ACCESSIBLE PARKING SPACES AND AISLES THAT SERVE THEM SHALL COMPLY WITH ADAAG 2010 GUIDELINES SECTIONS 502.4 AND 502.5.
4. OPENINGS IN GROUND SURFACES SHALL COMPLY WITH ADAAG 2010 GUIDELINES SECTION 302.3.
5. VERTICAL CHANGES IN ELEVATION ALONG ALL ACCESSIBLE ROUTES SHALL COMPLY WITH ADAAG 2010 GUIDELINES SECTIONS 303.2, 303.3, AND 303.4.
6. PARKING SPACES DESIGNATED AS ACCESSIBLE SHALL INCLUDE THE INTERNATIONAL SYMBOL OF ACCESSIBILITY COMPLYING WITH ADAAG 2010 GUIDELINES SECTIONS 103.7.2.1 AND 502.6.
7. ALL ACCESSIBLE PARKING SPACES AND ROUTES SERVING THEM SHALL HAVE A ROUGH, SLIP-RESISTANT SURFACE OR LIGHT BROOM FINISH IN COMPLIANCE WITH ADAAG 2010 GUIDELINES SECTION 302.1.



### 1 MOUNTING HEIGHTS

SCALE: 1/4" = 1'-0"

**DAMMON ENGINEERING, INC.**  
 LOUISIANA & MISSISSIPPI  
 Chief Engineer: Brian Mestich, PE  
 554 Old Spanish Trail  
 Slidell, LA 70468  
 www.dammonengineering.com  
 info@dammonengineering.com  
 PH: 985.469.5832

REVISIONS

#	DESCRIPTION	DATE

SEAL:

NEW DINING ADDITION  
 SOUTHSIDE CAFE  
 9154 PONTCHARTRAN DR  
 SLIDELL, LA 70468  
 JOB No: 2584 | DATE: 02-07-2019  
 DRAWN BY: JMS | CHECKED BY: JMS

SHEET TITLE:  
 ACCESSIBILITY INFORMATION

DRAWING NUMBER:  
**G102**

SHEET No: 2 of 15





### TABLE S102.7 - HEADER SPANS FOR INTERIOR LOAD-BEARING WALLS

HEADERS SUPPORTING	SIZE	DROPPED HEADER			RAISED HEADER		
		BUILDING WIDTH (ft.)			BUILDING WIDTH (ft.)		
		12	24	36	12	24	36
ONE FLOOR ONLY (CENTER BEARING)	(2) 2x4	4'-0"	2'-10"	2'-4"	4'-1"	2'-10"	2'-4"
	(2) 2x6	5'-11"	4'-3"	3'-5"	6'-1"	4'-4"	3'-6"
	(2) 2x8	7'-1"	5'-2"	4'-4"	7'-9"	5'-5"	4'-5"
	(2) 2x10	7'-11"	6'-0"	5'-0"	9'-2"	6'-6"	5'-3"
	(2) 2x12	8'-6"	6'-7"	5'-7"	10'-9"	7'-7"	6'-3"
	(3) 2x8	8'-5"	6'-4"	5'-3"	9'-8"	6'-10"	5'-7"
	(3) 2x10	9'-3"	7'-11" 10"	6'-0"	11'-5"	8'-1"	6'-7"
	(3) 2x12	9'-11"	7'-8"	6'-7"	13'-6"	9'-6"	7'-9"
(4) 2x8	9'-5"	7'-2"	6'-0"	11'-2"	7'-11"	6'-5"	
	(4) 2x10	10'-3"	7'-11"	6'-9"	13'-3"	9'-4"	7'-8"
	(4) 2x12	11'-0"	8'-7"	7'-4"	15'-7"	11'-0"	9'-0"

### TABLE S102.8 - HEADER SPANS FOR EXTERIOR LOAD-BEARING WALLS RESISTING WIND LOADS EXP "C"

SIZE	120 MPH	130 MPH	140 MPH	150 MPH	160 MPH	170 MPH	180 MPH	195 MPH
(2) 2x4	5'-1"	4'-8"	4'-4"	4'-1"	3'-10"	3'-7"	3'-5"	3'-2"
(2) 2x6	6'-3"	5'-9"	5'-4"	5'-0"	4'-8"	4'-5"	4'-2"	3'-10"
(2) 2x8	6'-10"	6'-4"	5'-11"	5'-6"	5'-2"	4'-10"	4'-7"	4'-3"
(2) 2x10	7'-4"	6'-10"	6'-4"	5'-11"	5'-6"	5'-2"	4'-11"	4'-6"
(2) 2x12	7'-10"	7'-3"	6'-9"	6'-3"	5'-11"	5'-7"	5'-3"	4'-10"
(3) 2x8	8'-5"	7'-9"	7'-2"	6'-9"	6'-4"	5'-11"	5'-7"	5'-2"
(3) 2x10	9'-0"	8'-4"	7'-9"	7'-3"	6'-9"	6'-4"	6'-0"	5'-7"
(3) 2x12	9'-7"	8'-11"	8'-3"	7'-8"	7'-3"	6'-10"	6'-5"	5'-11"
(4) 2x8	9'-8"	9'-0"	8'-4"	7'-9"	7'-3"	6'-10"	6'-6"	6'-0"
(4) 2x10	10'-5"	9'-7"	8'-11"	8'-4"	7'-10"	7'-4"	6'-11"	6'-5"
(4) 2x12	11'-7"	11'-1"	10'-3"	9'-6"	8'-11"	8'-4"	7'-10"	6'-10"

### TABLE S102.9 - SILL OR BOTTOM PLATE TO FOUNDATION CONNECTIONS RESISTING UPLIFT LOADS - 110 MPH WIND EXP "C"

BOTTOM PLATE TO FOUNDATION ANCHOR BOLT CONNECTION RESISTING UPLIFT LOADS	FOUNDATION SUPPORTING	MAXIMUM ANCHOR BOLT SPACING (INCHES)	
		5' END ZONES	INTERIOR ZONES
1 - 3 STORIES	50 INCHES ON CENTER	50 INCHES ON CENTER	

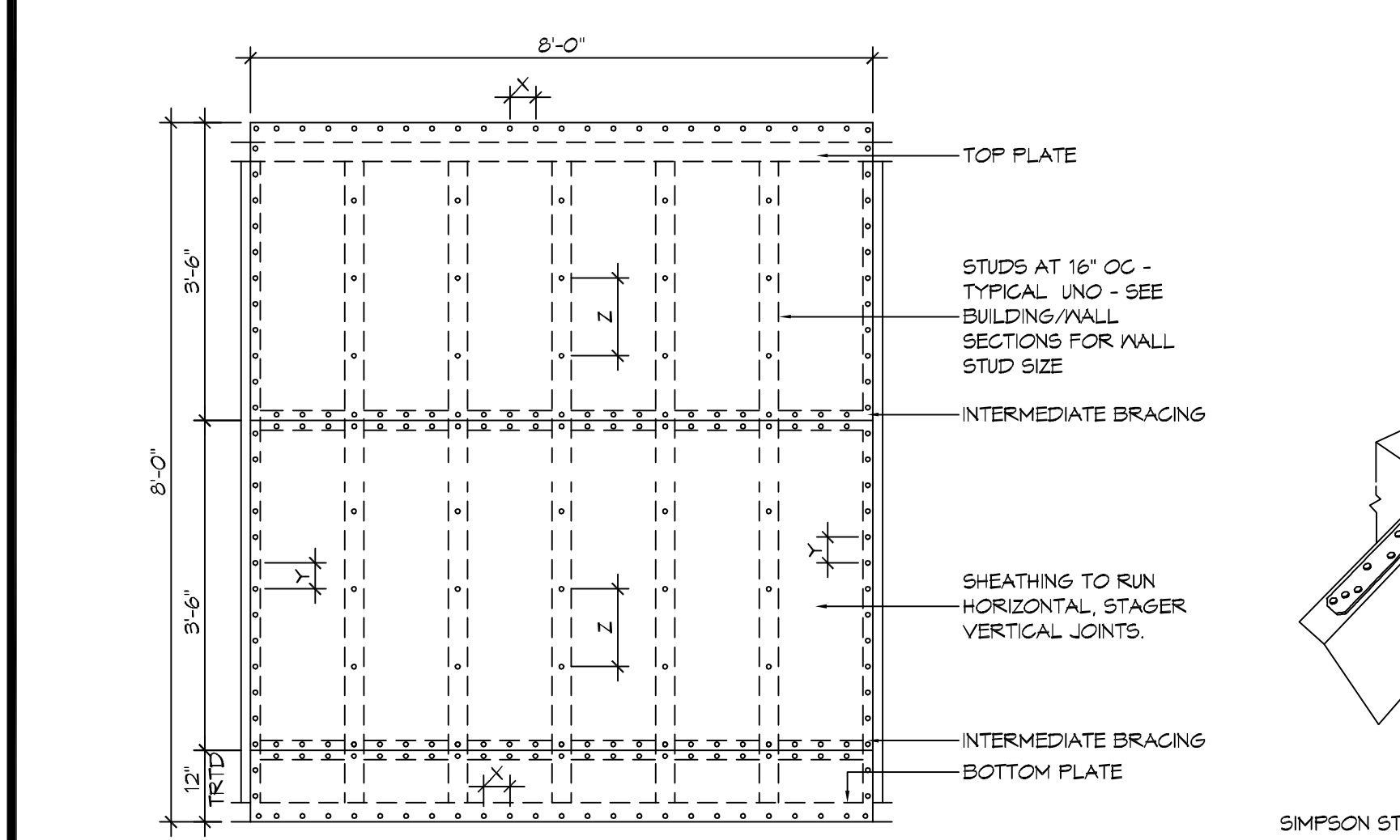
NOTE: A MINIMUM OF ONE ANCHOR BOLT SHALL BE PROVIDED WITHIN 6 TO 12 INCHES OF EACH END OF EACH PLATE

### TABLE S102.10 - BOTTOM PLATE TO FOUNDATION CONNECTIONS (ANCHOR BOLTS) RESISTING LATERAL & SHEAR LOADS - EXP "C"

BOTTOM PLATE TO FOUNDATION ANCHOR BOLT CONNECTION RESISTING UPLIFT LOADS	FOUNDATION SUPPORTING	MAXIMUM ANCHOR BOLT SPACING (INCHES)	
		1/2" Ø ANCHOR BOLTS	5/8" Ø ANCHOR BOLTS
1 STORY	40 INCHES ON CENTER	40 INCHES ON CENTER	

### TABLE S102.11 - FULL HEIGHT STUD REQUIREMENT FOR HEADERS OR WINDOW SILL PLATES IN EXTERIOR WALLS EXP "C"

HEADER SPAN (FEET)	WALL STUD SPACING (INCHES)		
	12" O.C.	16" O.C.	24" O.C.
2	1	1	1
4	2	2	1
6	3	3	2
8	4	3	2
10	5	4	3
12	6	5	3
14	7	6	4
16	8	6	4



**NAIL SPACING**  
 X = 4" O.C.  
 Y = 4" O.C.  
 Z = 12" O.C.

X = PLATE EDGE NAIL SPACING  
 Y = LONG EDGE NAIL SPACING  
 Z = FIELD NAIL SPACING

1 TYPICAL CONNECTION DETAILS  
 SCALE: NTS

### TABLE S102.5 - JACK STUD REQ - INT LOADBEARING WALLS

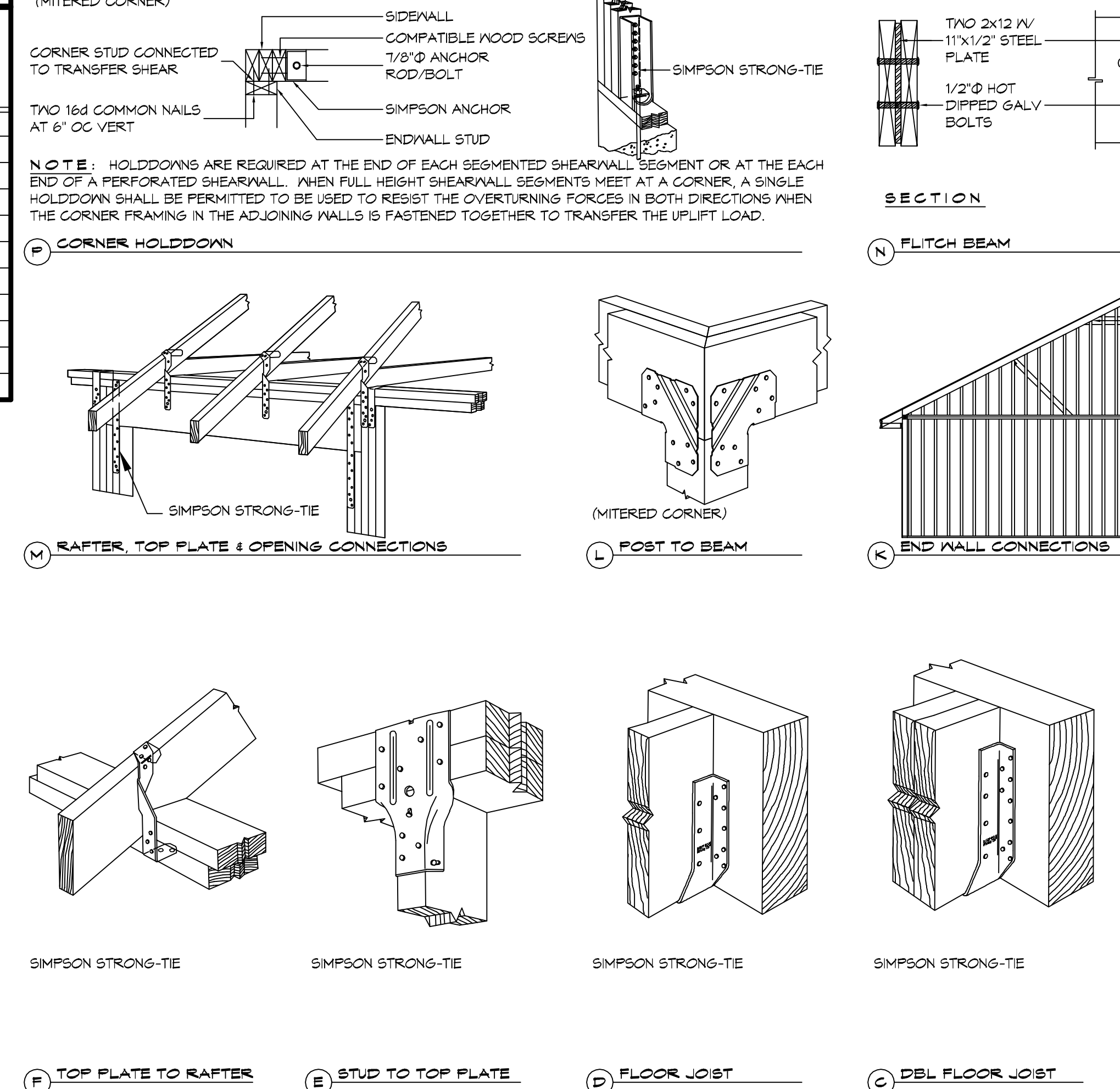
HEADER SUPPORTING	HEADER SPAN (FT)	ROOF SPAN (FEET)											
		12 FEET				24 FEET				36 FEET			
		NUMBER OF JACK STUDS REQUIRED AT EACH END OF THE HEADER											
ONE FLOOR ONLY (CENTER BEARING)	2	1	1	1	1	1	1	1	1	1	1	1	1
	4	1	1	1	1	1	1	1	1	1	1	1	1
	6	1	1	1	1	1	1	1	1	2	1	1	1
	8	1	1	1	1	2	1	1	1	2	2	2	1
	10	1	1	1	1	2	2	1	1	3	2	2	2
	12	1	1	1	1	2	2	2	1	3	2	2	2
	14	2	1	1	1	3	2	2	2	4	3	3	2
	16	2	1	1	1	3	2	2	2	4	3	3	2
TWO FLOORS (CENTER BEARING)	2	1	1	1	1	1	1	1	1	2	1	1	1
	4	1	1	1	1	2	1	1	1	3	2	2	2
	6	2	1	1	1	3	2	2	2	4	3	2	2
	8	2	2	1	1	3	2	2	2	5	3	3	3
	10	2	2	2	1	4	3	3	2	6	4	4	3
	12	3	2	2	2	5	3	3	3	7	5	4	4
	14	3	2	2	2	6	4	4	3	8	5	5	4
	16	4	3	2	2	6	4	4	3	9	6	6	5

HEADER WIDTH - 3" (2-2x), 4.5" (3-2x), 5", 6.5" (4-2x) EACH W/ 1/2" PLYWOOD SPACER BETWEEN

### TABLE S102.6 - JACK STUD REQ - EXTERIOR LOADBEARING WALLS

HEADER SUPPORTING	HEADER SPAN (FT)	ROOF LIVE LOAD 20 PSF				GROUND SNOW LOAD 30 PSF			
		3'	4.5'	5'	6'	3'	4.5'	5'	6'
ROOF AND CEILING	2	1	1	1	1	1	1	1	1
	4	1	1	1	1	1	1	1	1
	6	2	1	1	1	2	1	1	1
	8	2	2	2	1	2	2	2	1
	10	3	2	2	2	3	2	2	2
	12	3	2	2	2	3	2	2	2
	14	4	3	2	2	4	3	2	2
	16	4	3	3	2	4	3	3	2
ROOF, CEILING, AND ONE CENTER BEARING FLOOR	2	1	1	1	1	1	1	1	1
	4	2	1	1	1	2	1	1	1
	6	2	2	2	1	3	2	2	2
	8	3	2	2	2	3	2	2	2
	10	4	3	2	2	4	3	3	2
	12	4	3	3	2	5	3	3	3
	14	5	4	3	3	5	4	3	3
	16	6	4	4	3	6	4	4	3

HEADER WIDTH - 3" (2-2x), 4.5" (3-2x), 5", 6" (4-2x) EACH W/ 1/2" PLYWOOD SPACER BETWEEN



### TABLE S102.3 - NAILING SCHEDULE

DESCRIPTION	NUMBER OF COMMON NAILS	NUMBER OF BOX NAILS	SPACING
TOP PLATE TO TOP PLATE (FACE NAILED)	2-16d	2-16d	PER FOOT
TOP PLATE AT INTERSECTION (FACE)	4-16d	5-16d	JOINTS - EACH SIDE
STUD TO STUD (FACE-NAILED)	2-16d	2-16d	24" O.C.
HEADER TO HEADER (FACE NAILED)	16d	16d	16" O.C. EDGES
TOP OR BOTTOM PLATE TO STUD (END)	SEE TABLE	SEE TABLE	PER STUD
BOTTOM PLATE TO FLOOR JOIST, BAND JOIST, END JOIST OR BLOCKING	2-16d	2-16d	PER FOOT
ROOF SHEATHING			
WOOD STRUCTURAL PANELS	8d	10d	SEE TABLE S102.1
DIAGONAL BOARD SHEATHING			
1"x6" OR 1"x8"	2-8d	2-10d	PER SUPPORT
1"x10" OR WIDER	3-8d	3-10d	PER SUPPORT

### TABLE S102.4 - BUILDING ENVELOPE REQUIREMENTS

ROOFS	OPAQUE ELEMENTS		ASSEMBLY MAXIMUM	INSULATION MIN. R-VALUE
	INSULATION ENTIRELY ABOVE DECK		U-0.048	R-20.0 c.i.
METAL BUILDING	ATTIC AND OTHER		U-0.027	R-30
	MASS		U-0.151 @	R-5.7 c.i. @
	STEEL-FRAMED		U-0.119	R-13.0
WOOD-FRAMED AND OTHER	MASS		U-0.107	R-6.3 c.i.
	STEEL JOIST		U-0.052	R-19.0
	WOOD FRAMED AND OTHER		U-0.051	R-19.0
SLAB-ON-GRADE	UN-HEATED		F-0.730	NR
	SWINGING		U-0.700	NR
OPAQUE DOORS	NON-SWINGING		U-1.450	NR

c.i. = CONTINUOUS INSULATION; NR = NO INSULATION REQUIREMENT; @ = EXCEPTION APPLIES

### ROOF UNDERLAYMENT NOTES

- FOR ROOF SLOPES FROM TWO UNITS VERTICAL IN 12 UNITS HORIZONTAL (17-PERCENT SLOPE), UP TO FOUR UNITS VERTICAL IN 12 UNITS HORIZONTAL (33-PERCENT SLOPE) UNDERLAYMENT SHALL BE TWO LAYERS APPLIED IN THE FOLLOWING MANNER:
  - APPLY A 14 INCH STRIP OF UNDERLAYMENT FELT PARALLEL WITH AND STARTING AT THE EAVES, FASTENED SUFFICIENTLY TO HOLD IN PLACE. STARTING AT THE EAVE, APPLY 36 INCH WIDE SHEETS OF UNDERLAYMENT, OVERLAPPING SUCCESSIVE SHEETS 14 INCHES, AND FASTENED SUFFICIENTLY TO HOLD IN PLACE.
- FOR ROOF SLOPES OF FOUR UNITS VERTICAL IN 12 UNITS HORIZONTAL (33-PERCENT SLOPE) OR GREATER, UNDERLAYMENT SHALL BE ONE LAYER APPLIED IN THE FOLLOWING MANNER:
  - UNDERLAYMENT SHALL BE APPLIED SINGLE FASHION, PARALLEL TO AND STARTING FROM THE EAVE AND LAPPED 2 INCHES, FASTENED SUFFICIENTLY TO HOLD IN PLACE. END LAPS SHALL BE OFFSET BY 6 FEET.

### SHINGLE APPLICATION & FASTENING NOTES

- ASPHALT STRIP SHINGLES SHALL HAVE A MINIMUM OF SIX FASTENERS PER SHINGLE WHERE THE ROOF IS IN ONE OF THE FOLLOWING CATEGORIES:
  - THE BASIC WIND SPEED IS 110 MPH OR GREATER AND THE EAVE IS 20 FEET OR HIGHER ABOVE GRADE.
  - THE BASIC WIND SPEED IS 120 MPH OR GREATER.
  - SPECIAL WIND ZONES.

### GENERAL UPLIFT CONNECTION NOTES

**ROOF ASSEMBLY TO WALL ASSEMBLY:**  
 UPLIFT CONNECTIONS SHALL BE FROM RAFTER OR TRUSS TO WALL STUD. WHEN RAFTERS OR TRUSSES ARE NOT LOCATED DIRECTLY ABOVE STUDS, RAFTERS SHALL BE ATTACHED TO THE WALL STUD WITH UPLIFT CONNECTIONS. RAFTERS SHALL BE ATTACHED TO THE WALL STUD WITH UPLIFT CONNECTIONS. UPLIFT CONNECTIONS SHALL BE IN ACCORDANCE WITH TABLE S102.10.

**WALL ASSEMBLY TO WALL ASSEMBLY:**  
 STORY TO STORY UPLIFT CONNECTIONS FROM UPPER STORY WALL STUD TO LOWER STORY WALL STUD. WHEN UPPER STORY WALL STUDS ARE NOT LOCATED DIRECTLY ABOVE LOWER WALL STUDS, THE STUDS SHALL BE ATTACHED TO A COMMON MEMBER IN THE FLOOR ASSEMBLY BY UPLIFT CONNECTIONS. UPLIFT CONNECTIONS SHALL BE IN ACCORDANCE WITH TABLE S102.11.

**WALL ASSEMBLY TO FOUNDATION:**  
 FIRST FLOOR WALL STUDS SHALL BE CONNECTED TO THE FOUNDATION, SILL PLATE, OR BOTTOM PLATE. A MINIMUM OF A 1-1/4" X 20 GA. ASTM A653 GRADE 55 STEEL STRAP SHALL BE NAILED TO THE WALL STUDS AND HAVE A MINIMUM EMBEDMENT OF 1 INCHES IN CONCRETE FOUNDATIONS AND SLABS-ON-GRADE, 15 INCHES IN MASONRY BLOCK FOUNDATIONS, OR BE LAPPED UNDER THE BOTTOM PLATE, 3 INCH SQUARE WASHERS SHALL BE USED ON THE ANCHOR BOLTS AND ANCHOR BOLT SPACINGS SHALL NOT EXCEED THE REQUIREMENTS. STEEL STRAPS EMBEDDED IN OR IN CONTACT WITH SLAB-ON-GRADE OR MASONRY BLOCK FOUNDATIONS SHALL BE HOT-DIPPED GALV. AFTER FABRICATION, OR MANUF. FROM 6105 OR 2450 GALV. STL. CONNECTIONS SHALL BE IN ACCORDANCE WITH TABLE S102.12.

### TABLE S102.1 - ROOF SHEATHING OR CLADDING REQUIREMENT - 130 MPH WIND LOAD EXP "C"

SHEATHING LOCATION	RAFTER / TRUSS SPACING	E F	
		MAX NAIL SPACING FOR 8d COMMON NAILS OR 10d BOX NAILS (INCHES O.C.)	
INTERIOR ZONE	12" O.C.	6	12
	16" O.C.	6	12
	24" O.C.	6	12
PERIMETER EDGE ZONE	12" O.C.	6	12
	24" O.C.	6	12

110 MPH WIND - EXPOSURE 'C' TYPICAL  
 E = NAIL SPACING AT PANEL EDGES, INCHES.  
 F = NAIL SPACING AT INTERMEDIATE SUPPORTS IN THE PANEL FIELD, INCHES.

### TABLE S102.2 - WALL SHEATHING OR CLADDING REQUIREMENT - 130 MPH WIND LOAD EXP "C"

SHEATHING LOCATION	STUD SPACING	E F	
		MAX NAIL SPACING FOR 8d COMMON NAILS OR 10d BOX NAILS (INCHES O.C.)	
INTERIOR ZONE	12" O.C.	6	12
	16" O.C.	6	12
	24" O.C.	6	12
PERIMETER EDGE ZONE	16" O.C.	6	12
	24" O.C.	6	12

110 MPH WIND - EXPOSURE 'C' TYPICAL  
 E = NAIL SPACING AT PANEL EDGES, INCHES.  
 F = NAIL SPACING AT INTERMEDIATE SUPPORTS IN THE PANEL FIELD, INCHES.

**DAMMON ENGINEERING, INC.**  
 LOUISIANA & MISSISSIPPI

Chief Engineer: Brian Westich, PE  
 554 Old Spanish Trail  
 Slidell, LA 70488  
 www.dammonengineering.com  
 info@dammonengineering.com  
 PH: 985.649.5832

NEWING ADDITION  
 SOUTH SIDE CAFE

SHEET TITLE:  
 TYPICAL CONNECTION  
 DETAILS, SCHEDULES, AND  
 NOTES

DRAWING NUMBER:  
**S102**

SHEET No: 5 of 15



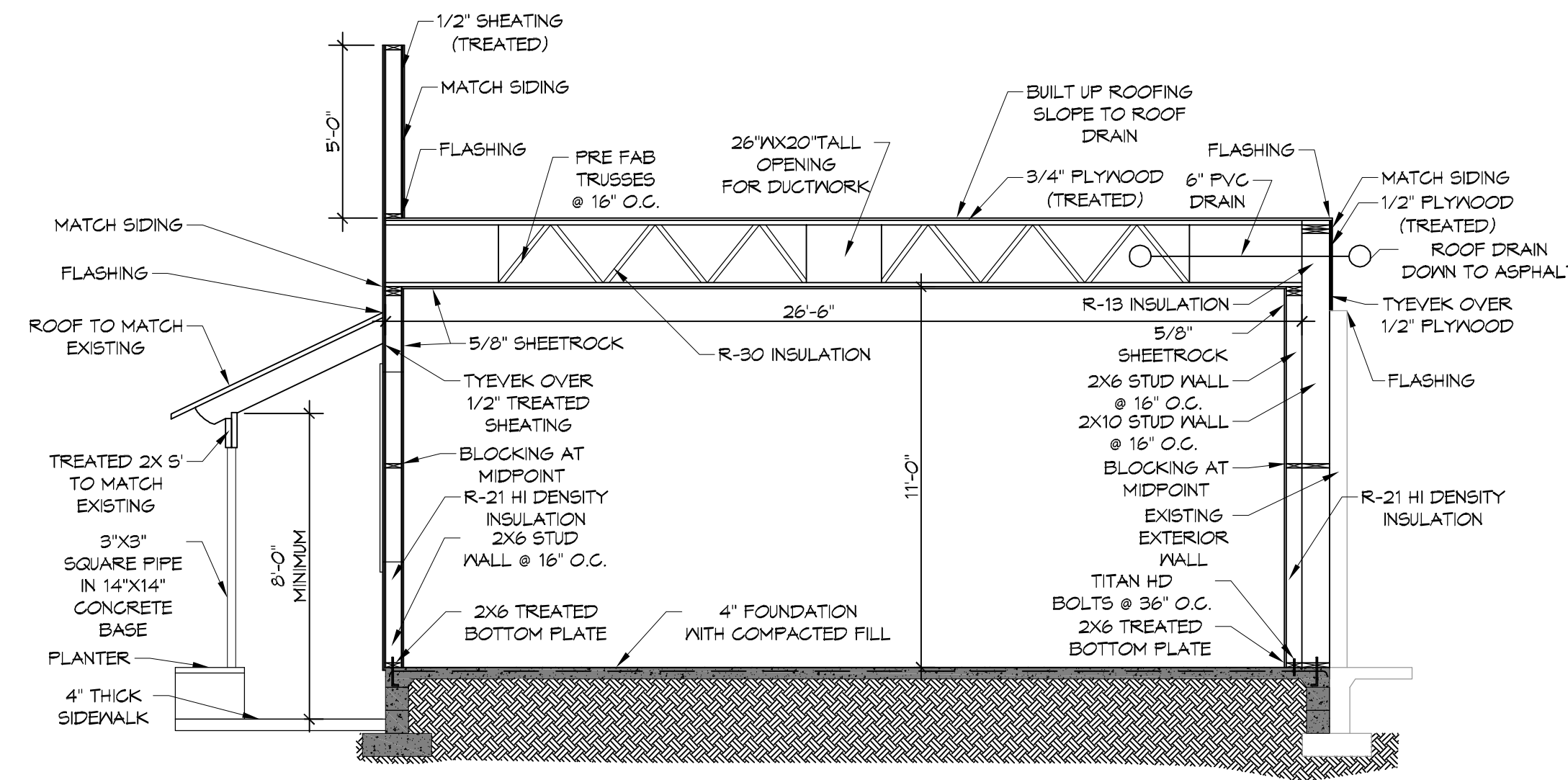


WINDOW SCHEDULE					
MK	SIZE (WXH)	FRAME	TYPE	GLAZING	REMARKS
A	59-1/2 X 66	WOOD	FIXED	NONE	CLOSE IN WALL
B	59-1/2 X 66	ALUM	FIXED	TINTED/TEMPERED/DOUBLE INSULATED	RELOCATED EXISTING WINDOW

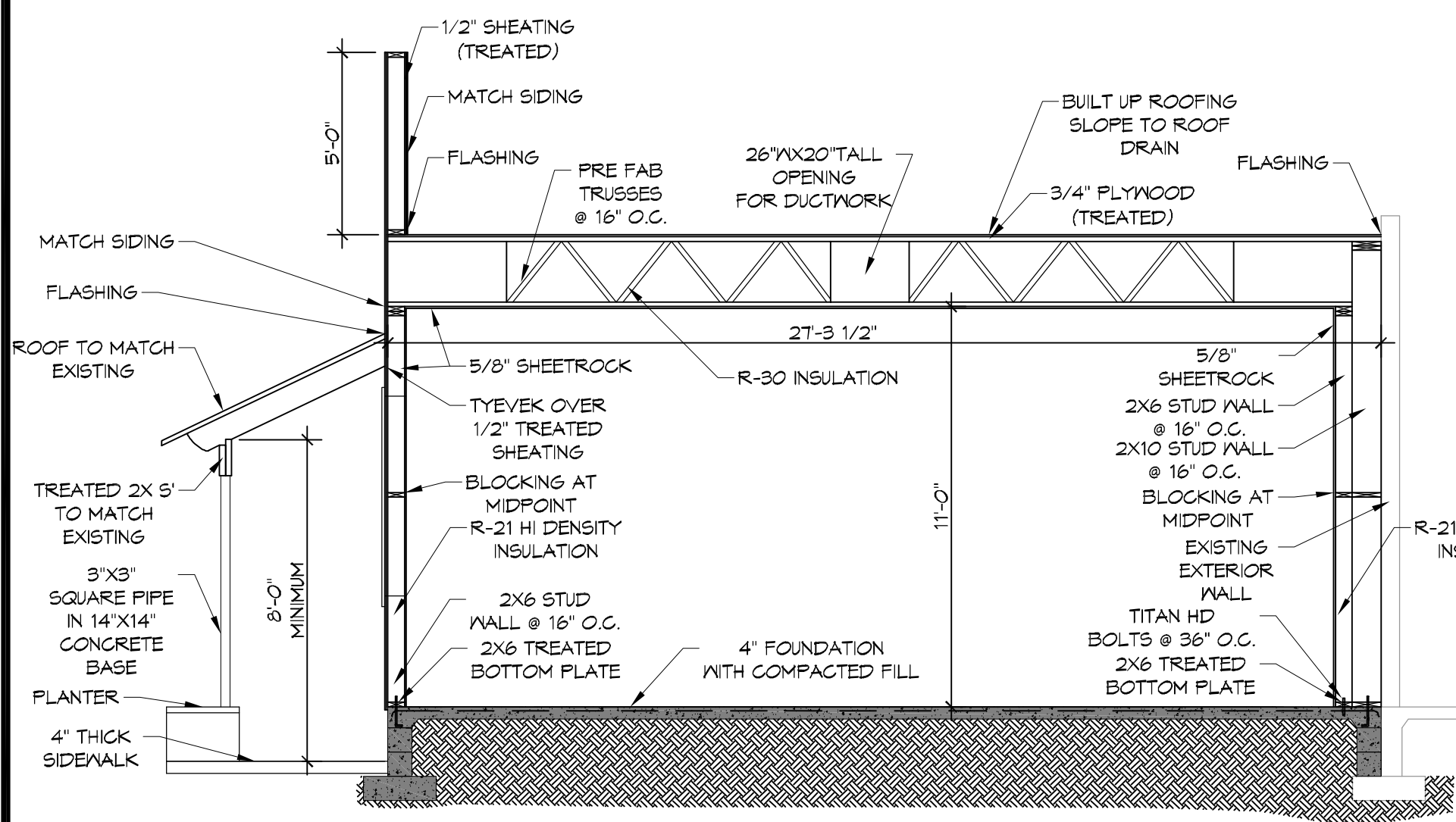
NOTES:  
1. ALL EXTERIOR WINDOW ASSEMBLIES TO BE RATED FOR 130 MPH WINDS AND SHALL BE MISSILE IMPACT RESISTANT.

DOOR SCHEDULE						
MK	WIDTH	HEIGHT	DOOR MATERIAL	FRAME MATERIAL	LOCK TYPE	REMARKS
A/04	3'-0"	6'-8"	GLASS	HOLLOW METAL	PUSH PULL	TWO 3'-0" DOORS
A/10	3'-0"	6'-8"	GLASS	HOLLOW METAL	PUSH PULL	TWO 3'-0" DOORS
B/07	3'-0"	6'-8"	WOOD	HOLLOW METAL	PRIVACY	
B/08	3'-0"	6'-8"	WOOD	HOLLOW METAL	PRIVACY	
B/10	3'-0"	6'-8"	HOLLOW METAL	HOLLOW METAL	PUSH PULL	
B/11	3'-0"	6'-8"	WOOD	HOLLOW METAL	PUSH PULL	SWING DOORS

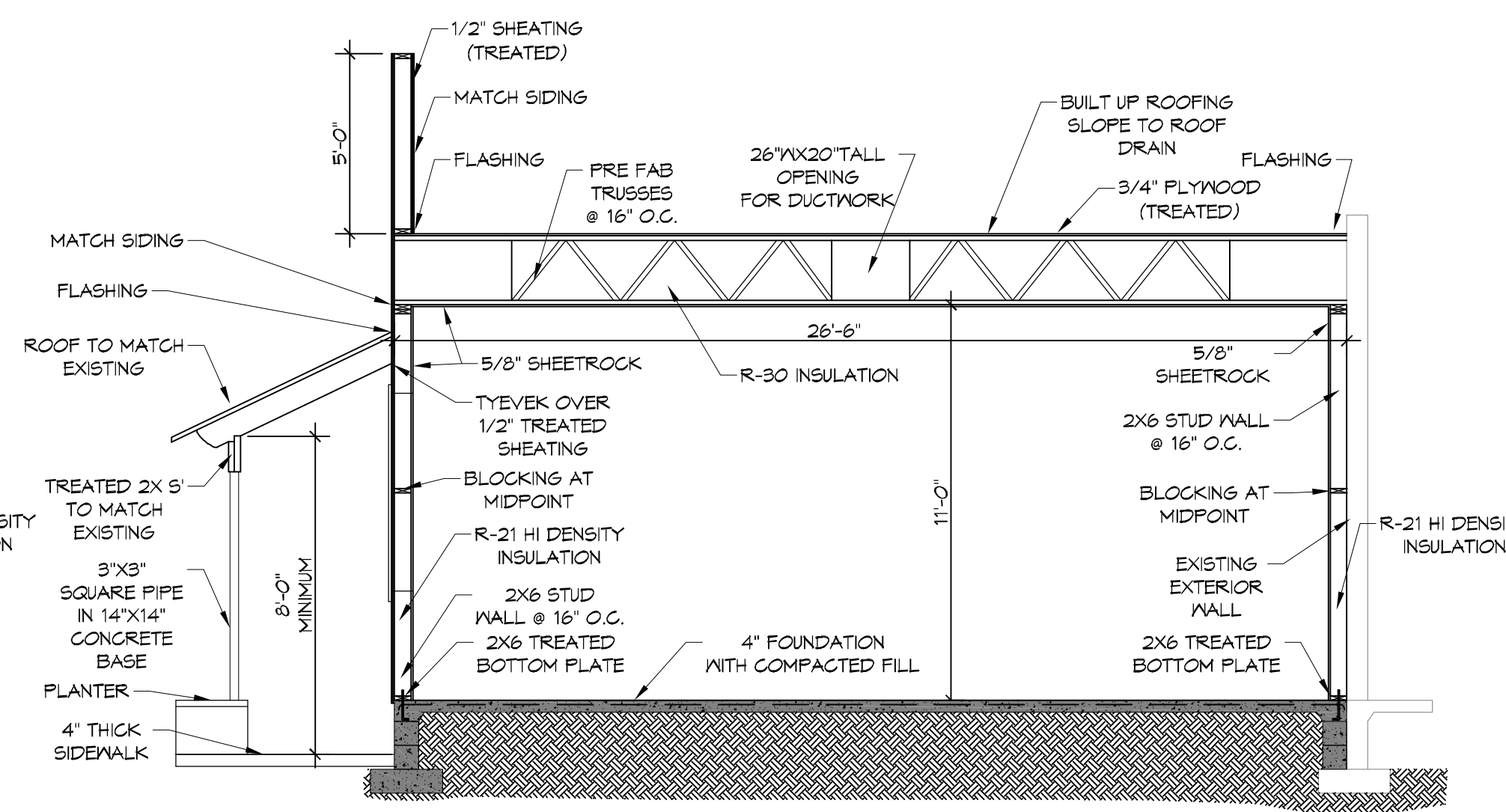
FINISH SCHEDULE					
ROOM	FLOOR	BASE	WALLS	CEILING	NOTES
MENS RESTROOM	SEALED CONCRETE	CERAMIC TILE	CERAMIC TILE	5/8" G/VB	SIX FOOT HEIGHT
WOMENS RESTROOM	SEALED CONCRETE	CERAMIC TILE	CERAMIC TILE	5/8" G/VB	SIX FOOT HEIGHT
BAR/DINING	SEALED CONCRETE		5/8" G/VB	5/8" G/VB	
PREP ROOM	SEALED CONCRETE		FRP PANELS	DROP CEILING	



**A ADDITION SECTION**  
SCALE: 1/4" = 1'-0"



**A ADDITION SECTION**  
SCALE: 1/4" = 1'-0"



**B ADDITION SECTION**  
SCALE: 1/4" = 1'-0"

DOOR SCHEDULE			
INSUL MTL	6'-0"	3'-0"	B/10
GLASS	6'-0"	3'-0"	A04/A10
SC WOOD	6'-0"	3'-0"	B7/B8
SC WOOD	6'-0"	3'-4"	B11

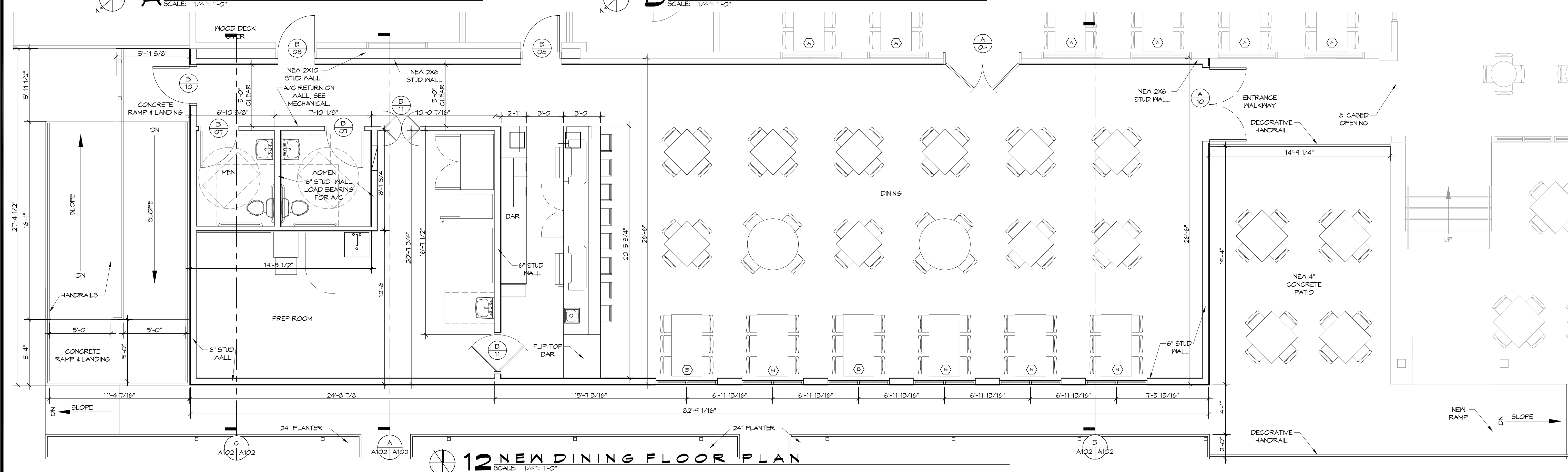
**GENERAL NOTES**

- INSULATION AND INSULATION ASSEMBLIES SHALL MEET THE REQUIREMENTS OF IBC 2012 SECTION 714.
- CONCEALED INSULATION SHALL HAVE A FLAME SPREAD OF 0-25 AND SMOKE DEVELOPED INDEX OF 0-450, EXCEPT THAT IN COMBUSTIBLE (WOOD FRAME) CONSTRUCTION.
- FACING SHALL COMPLY WITH IBC 2012.
- ALL MATERIALS SHALL BE NEW AND UL LISTED.
- NO WORK SHALL BE CONCEALED UNTIL APPROVED BY LOCAL INSPECTORS.
- CONSTRUCTION SHALL COMPLY WITH ALL PARISH, STATE, AND LOCAL CODES.
- CONTRACTOR TO GUARANTEE WORK FOR ONE YEAR FROM DATE OF SUBSTANTIAL COMPLETION.
- CONTRACTOR SHALL FURNISH WATER AND POWER FROM EXISTING SOURCES.
- EXTERIOR CAULKING SHALL BE THICK CAULK.
- PAINT SHALL BE SHERWIN WILLIAMS OR EQUIVALENT AND APPROPRIATE FOR THE SUBSTRATE TO WHICH IT IS APPLIED AS RECOMMENDED BY PAINT MANUFACTURER. ALL WORK TO RECEIVE THREE COATS (ONE PRIMER COAT, TWO FINISH COATS) UNLESS OTHERWISE RECOMMENDED BY PAINT MANUFACTURER. COLORS TO BE SELECTED BY OWNER.
- PROVIDE CLEANUP ON A REGULAR BASIS. NO TRASH SHALL BE STORED INSIDE BUILDING PREMISES.
- ALL BATT INSULATION SHALL HAVE A CLASS "A" (0-25) FLAME SPREAD IN COMPLIANCE WITH IBC 2012.
- USE 2X6 STUDS OR TWO 2X4 STAGGERED STUDS WITH 2X6 SILL PLATE AT ALL WALLS WHERE 4" PIPE IS INDICATED. SEE PLUMBING RISER DIAGRAM FOR PIPE SIZE.
- PROVIDE GALVANIZED METAL PAN WITH DRAIN AT ALL WATER HEATERS.
- ALL FLOORING SHALL MEET OR EXCEED ADA GUIDELINES REQUIREMENTS FOR SLIP RESISTANCE.
- INTERIOR LOCKS ON DOORS IN MEANS OF EGRESS SHALL NOT REQUIRE THE USE OF A KEY, SPECIAL KNOWLEDGE, OR SPECIAL DEVICE TO OPEN IN THE DIRECTION OF EGRESS. ALL DOORS SHALL HAVE LEVER TYPE HANDLES.
- INTERIOR WALLS AND CEILINGS SHALL HAVE A FLAME SPREAD OF 0-200 AND A SMOKE DEVELOPMENT RATING OF 0-450.
- ALL WORK SHALL COMPLY WITH THE LATEST EDITION OF ALL LOCAL, STATE, AND NATIONAL CODES COVERING THE TYPE OF WORK BEING PERFORMED.
- PROVIDE PORTABLE FIRE EXTINGUISHERS IN ACCORDANCE WITH NFPA 101. SEE APPENDIX "E" OF NFPA 101 FOR DISTRIBUTION OF EXTINGUISHERS.
- ALL FIRE WALLS SHALL EXTEND TIGHT TO ROOF DECK AND BE SEALED WITH AN APPROVED FIRE CAULK.
- ALL ELECTRICAL, MECHANICAL, AND PLUMBING MATERIALS PENETRATING FIRE WALLS SHALL BE FIRE CAULKED. (PENETRATIONS THROUGH RATED CONSTRUCTION SHALL BE SEALED WITH A MATERIAL CAPABLE OF PREVENTING THE PASSAGE OF FLAMES AND HOT GASES WHEN TESTED IN ACCORDANCE WITH ASTM-E814.)
- SERVICE COUNTERS SHALL HAVE AN ACCESSIBLE WRITING SURFACE IN COMPLIANCE WITH ADAAG ACCESSIBILITY GUIDELINES 2010, SECTION 402.3.

**DAMMON ENGINEERING, INC.**  
LOUISIANA & MISSISSIPPI

Chief Engineer: Brian Mettich, PE  
554 Old Spanish Trail  
Slidell, LA 70598  
www.dammonengineering.com  
info@dammonengineering.com  
PH: 985.649.5832

DATE	REVISIONS	DESCRIPTION



**12 NEW DINING FLOOR PLAN**  
SCALE: 1/4" = 1'-0"

NEW DINING ADDITION  
**SOUTHSIDE CAFE**

9154 PONTCHARTRAIN DR  
SLIDELL, LA 70568  
JOB NO: 2394 DATE: 02-07-2014  
DRAWN BY: JAS/MK CHECKED BY: CKD

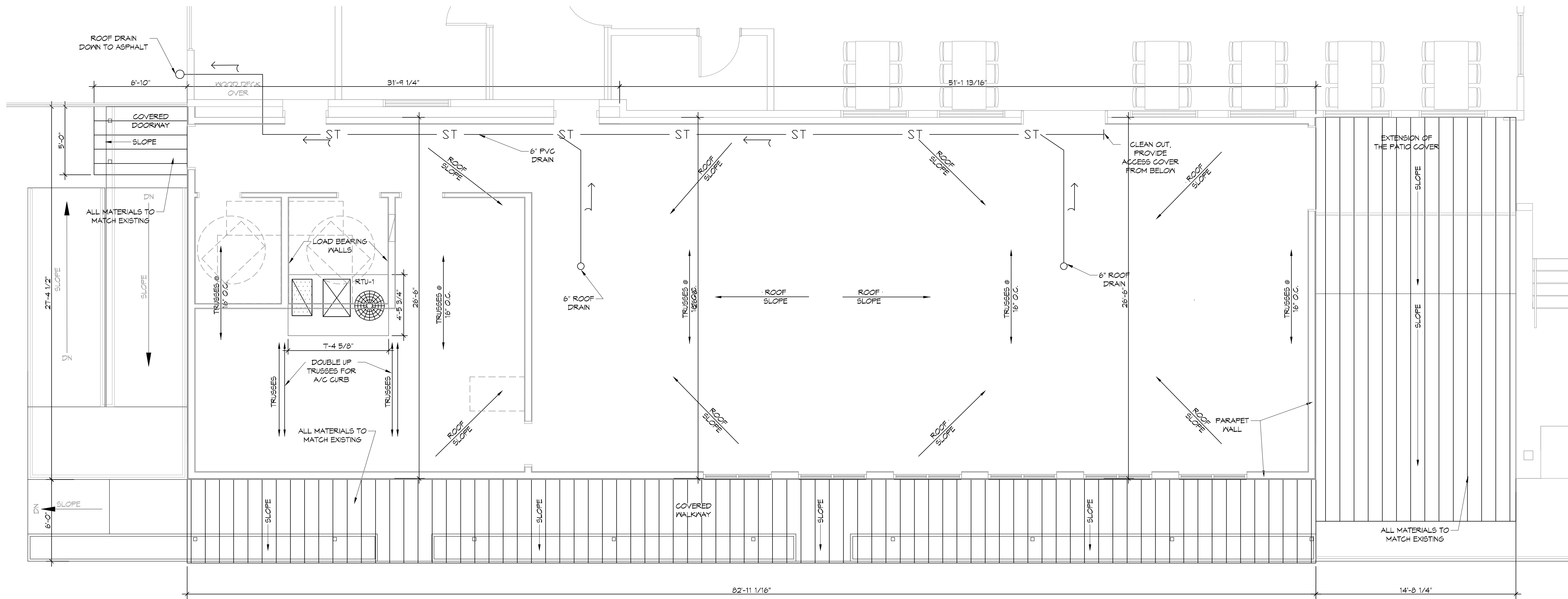
SHEET TITLE:  
NEW DINING FLOOR PLAN

DRAWING NUMBER:  
**A102**

SHEET No: 6 of 15







**15** ROOF PLAN  
SCALE: 1/4" = 1'-0"

#	DESCRIPTION	DATE



NEW DINING ADDITION  
**SOUTHSIDE CAFE**

9154 PONTCHARTRAIN DR  
SLIDELL, LA 70458

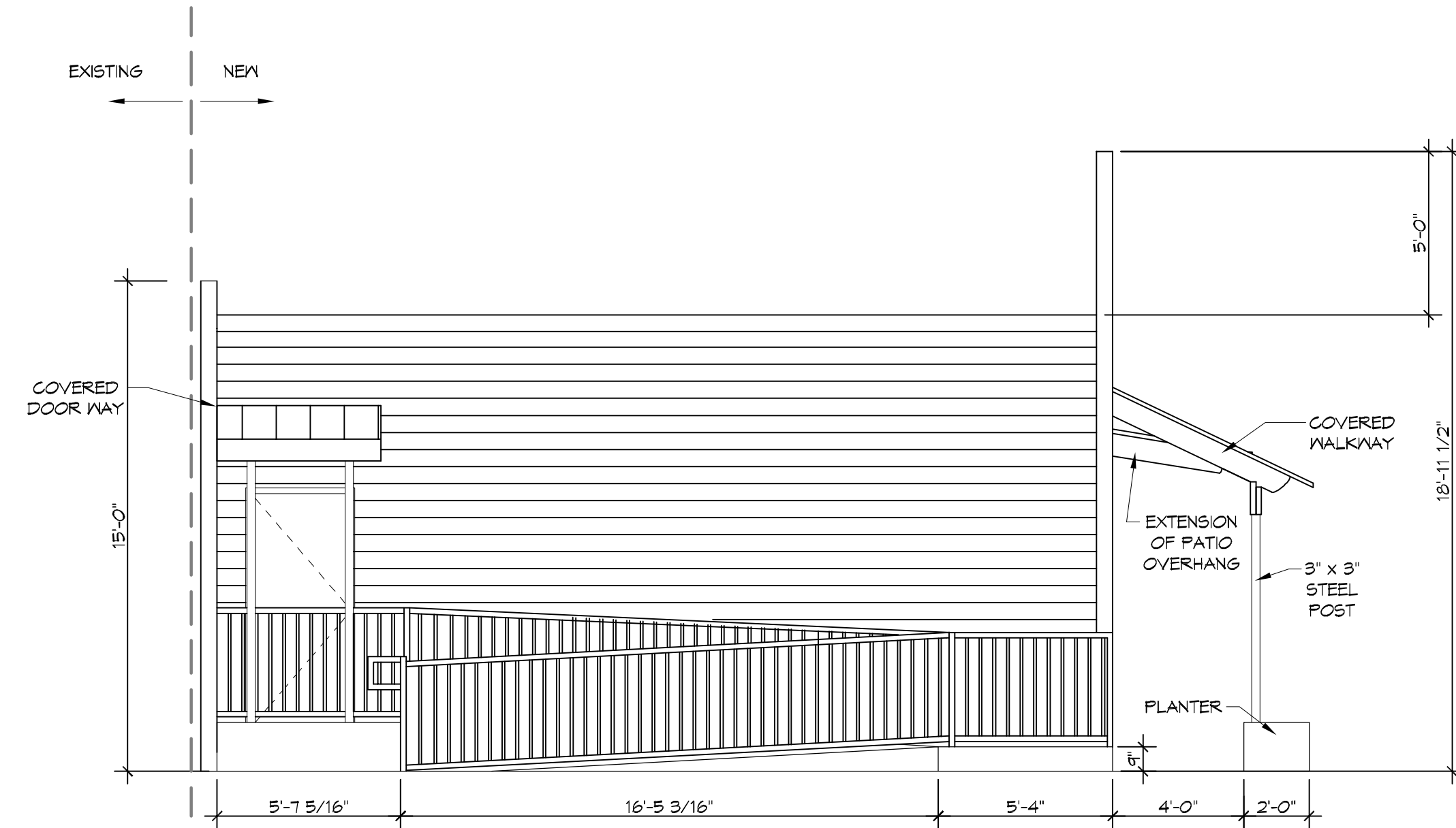
JOB NO: 2359 | DATE: 02-07-2014  
DRAWN BY: JAGMVA | CHECKED BY: JMS

SHEET TITLE:  
ROOF PLAN

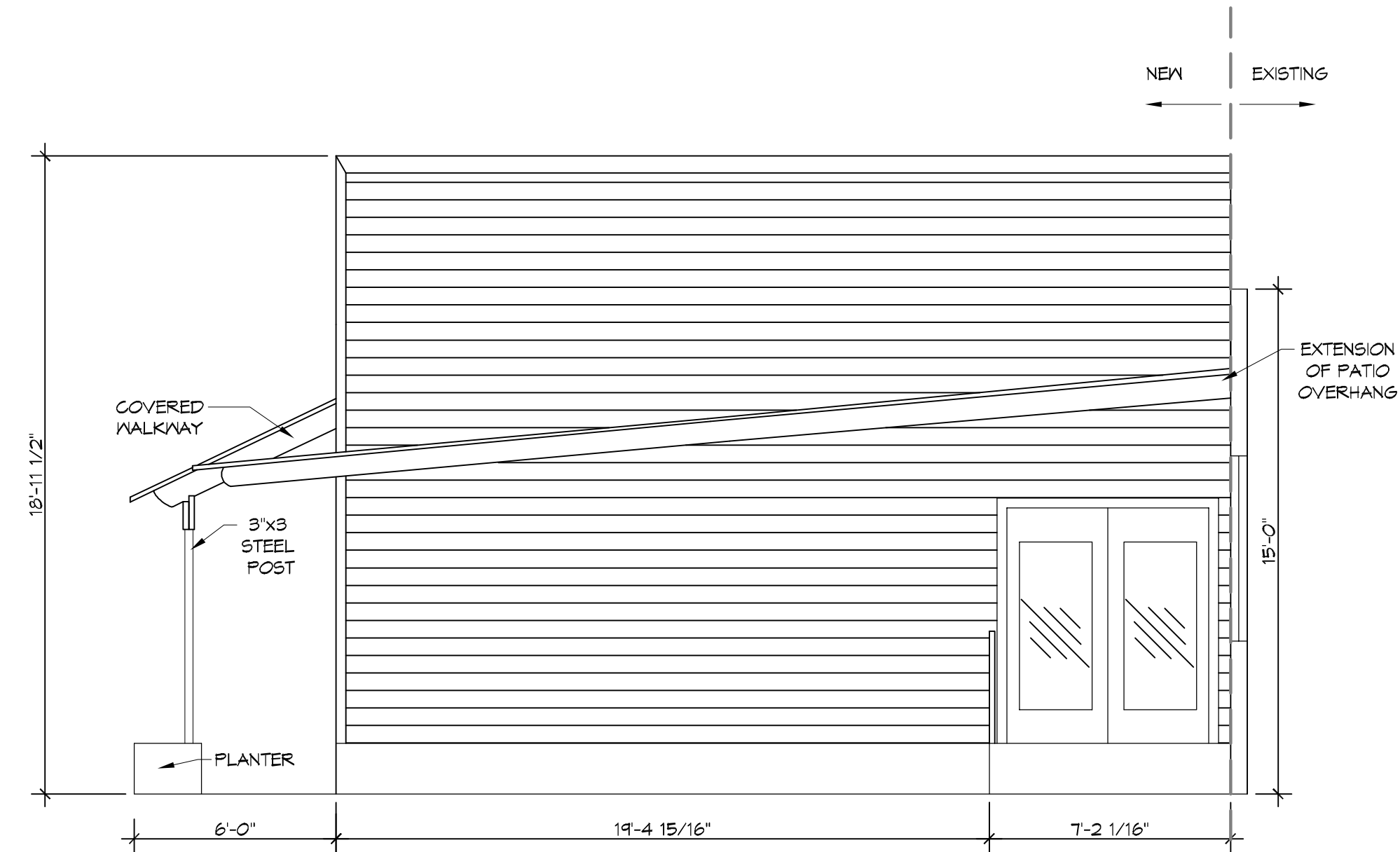
DRAWING NUMBER:  
**A105**

SHEET No: 11 of 15

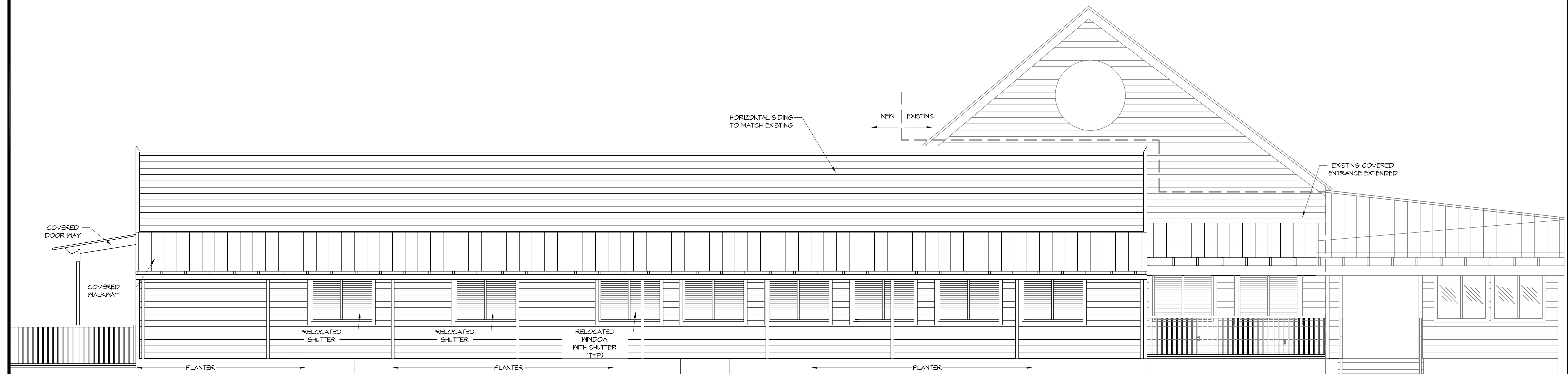
FILE NAME: J:\16 - RESTAURANT\3100 - Southside Cafe\Drawing\16.dwg Date: Thursday, February 7, 2019 7:21:18 AM



**17 REAR ELEVATION**  
SCALE: 1/4"=1'-0"



**18 FRONT ELEVATION**  
SCALE: 1/4"=1'-0"



**16 SIDE ELEVATION**  
SCALE: 1/4"=1'-0"

**DAMMON**  
**ENGINEERING, INC.**  
LOUISIANA & MISSISSIPPI  
www.dammonengineering.com  
info@dammonengineering.com  
Chief Engineer: Brian Mistich, PE  
554 Old Spanish Trail  
Slidell, LA 70668  
PH: 985.649.552

#	DESCRIPTION	REVISIONS	DATE



NEW DINING ADDITION  
**SOUTHSIDE CAFE**  
9154 PONTCHARTRAIN DR  
SLIDELL, LA 70458  
JOB NO: 2019-01 DATE: 02-07-2019  
DRAWN BY: JAC/MK CHECKED BY: JMS

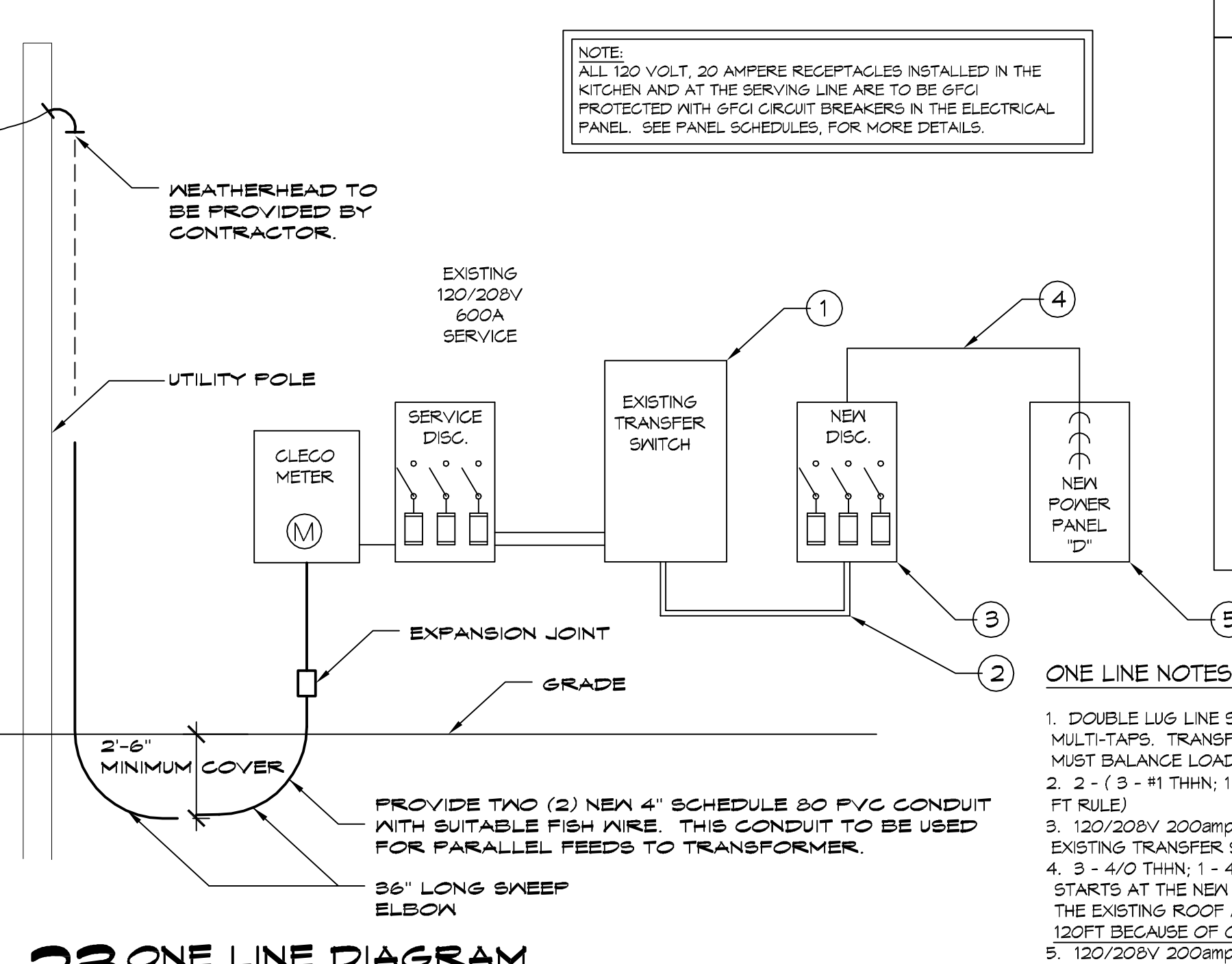
SHEET TITLE:  
EXTERIOR ELEVATIONS

DRAWING NUMBER:  
**A106**  
SHEET No: 12 of 15





PANEL SCHEDULE										
PANEL NO.	THHN SIZE	DESCRIPTION	LOAD	BREAKER	LOAD (KVA)	AD (30/20)	LOAD (KVA)	BREAKER	LOAD (KVA)	DESCRIPTION
1	#10	10 TON RTU#1	60	3	6.0		3.0	3	3.0	DISHWASHER TO 10
2	#10	10 TON RTU#2	60	3	6.0		3.0	3	3.0	ALTO SHAAM TO 10
3	#10	10 TON RTU#3	60	3	6.0		3.0	3	3.0	BEER COOLER TO 10
4	#10	10 TON RTU#4	60	3	6.0		3.0	3	3.0	RESTROOM GR. TO 10
5	#10	10 TON RTU#5	60	3	6.0		3.0	3	3.0	EXTERIOR GR. TO 10
6	#10	10 TON RTU#6	60	3	6.0		3.0	3	3.0	POS. #1 TO 10
7	#10	10 TON RTU#7	60	3	6.0		3.0	3	3.0	POS. #1 TO 10
8	#10	10 TON RTU#8	60	3	6.0		3.0	3	3.0	POS. #1 TO 10
9	#10	10 TON RTU#9	60	3	6.0		3.0	3	3.0	POS. #1 TO 10
10	#10	10 TON RTU#10	60	3	6.0		3.0	3	3.0	POS. #1 TO 10
11	#10	10 TON RTU#11	60	3	6.0		3.0	3	3.0	POS. #1 TO 10
12	#10	10 TON RTU#12	60	3	6.0		3.0	3	3.0	POS. #1 TO 10
13	#10	10 TON RTU#13	60	3	6.0		3.0	3	3.0	POS. #1 TO 10
14	#10	10 TON RTU#14	60	3	6.0		3.0	3	3.0	POS. #1 TO 10
15	#10	10 TON RTU#15	60	3	6.0		3.0	3	3.0	POS. #1 TO 10
16	#10	10 TON RTU#16	60	3	6.0		3.0	3	3.0	POS. #1 TO 10
17	#10	10 TON RTU#17	60	3	6.0		3.0	3	3.0	POS. #1 TO 10
18	#10	10 TON RTU#18	60	3	6.0		3.0	3	3.0	POS. #1 TO 10
19	#10	10 TON RTU#19	60	3	6.0		3.0	3	3.0	POS. #1 TO 10
20	#10	10 TON RTU#20	60	3	6.0		3.0	3	3.0	POS. #1 TO 10
21	#10	10 TON RTU#21	60	3	6.0		3.0	3	3.0	POS. #1 TO 10
22	#10	10 TON RTU#22	60	3	6.0		3.0	3	3.0	POS. #1 TO 10
23	#10	10 TON RTU#23	60	3	6.0		3.0	3	3.0	POS. #1 TO 10
24	#10	10 TON RTU#24	60	3	6.0		3.0	3	3.0	POS. #1 TO 10
25	#10	10 TON RTU#25	60	3	6.0		3.0	3	3.0	POS. #1 TO 10
26	#10	10 TON RTU#26	60	3	6.0		3.0	3	3.0	POS. #1 TO 10
27	#10	10 TON RTU#27	60	3	6.0		3.0	3	3.0	POS. #1 TO 10
28	#10	10 TON RTU#28	60	3	6.0		3.0	3	3.0	POS. #1 TO 10
29	#10	10 TON RTU#29	60	3	6.0		3.0	3	3.0	POS. #1 TO 10
30	#10	10 TON RTU#30	60	3	6.0		3.0	3	3.0	POS. #1 TO 10
31	#10	10 TON RTU#31	60	3	6.0		3.0	3	3.0	POS. #1 TO 10
32	#10	10 TON RTU#32	60	3	6.0		3.0	3	3.0	POS. #1 TO 10
33	#10	10 TON RTU#33	60	3	6.0		3.0	3	3.0	POS. #1 TO 10
34	#10	10 TON RTU#34	60	3	6.0		3.0	3	3.0	POS. #1 TO 10
35	#10	10 TON RTU#35	60	3	6.0		3.0	3	3.0	POS. #1 TO 10
36	#10	10 TON RTU#36	60	3	6.0		3.0	3	3.0	POS. #1 TO 10
37	#10	10 TON RTU#37	60	3	6.0		3.0	3	3.0	POS. #1 TO 10
38	#10	10 TON RTU#38	60	3	6.0		3.0	3	3.0	POS. #1 TO 10
39	#10	10 TON RTU#39	60	3	6.0		3.0	3	3.0	POS. #1 TO 10
40	#10	10 TON RTU#40	60	3	6.0		3.0	3	3.0	POS. #1 TO 10
41	#10	10 TON RTU#41	60	3	6.0		3.0	3	3.0	POS. #1 TO 10
42	#10	10 TON RTU#42	60	3	6.0		3.0	3	3.0	POS. #1 TO 10
43	#10	10 TON RTU#43	60	3	6.0		3.0	3	3.0	POS. #1 TO 10
44	#10	10 TON RTU#44	60	3	6.0		3.0	3	3.0	POS. #1 TO 10
45	#10	10 TON RTU#45	60	3	6.0		3.0	3	3.0	POS. #1 TO 10
46	#10	10 TON RTU#46	60	3	6.0		3.0	3	3.0	POS. #1 TO 10
47	#10	10 TON RTU#47	60	3	6.0		3.0	3	3.0	POS. #1 TO 10
48	#10	10 TON RTU#48	60	3	6.0		3.0	3	3.0	POS. #1 TO 10
49	#10	10 TON RTU#49	60	3	6.0		3.0	3	3.0	POS. #1 TO 10
50	#10	10 TON RTU#50	60	3	6.0		3.0	3	3.0	POS. #1 TO 10



POWER LEGEND	
SYMB	STANDARD 120V DUPLEX RECEPTACLE, NEMA 5-2 OR 15' AFF (UNLESS OTHERWISE NOTED)
	SINGLE-POLE DEDICATED RECEPTACLE
	GFCI DUPLEX RECEPTACLE
	DEDICATED GFCI DUPLEX RECEPTACLE
	240V RECEPTACLE - MOUNTED AT 30" AFF
	JUNCTION BOX
	WEATHER-PROOF GFCI DUPLEX RECEPTACLE MOUNTED AT 30" AFF (UNLESS OTHERWISE NOTED)
	STANDARD 120V DUPLEX RECEPTACLE - CEILING MOUNTED
	SINGLE POLE RECEPTACLE
	WALL MOUNTED DATA OUTLET
	QUAD OUTLET

LIGHTING LEGEND	
	EMERGENCY LIGHT FIXTURE
	EXIT LIGHT FIXTURE - CEILING MOUNTED
	WALL MOUNTED LIGHT, REUSE EXISTING AND ADD NEW TO MATCH EXISTING.
	PENDANT LED LIGHT, MATCH EXISTING
	2X4 - 4 - FLUORESCENT OR LED
	1X2 - FLUORESCENT OR LED (RESTROOMS)
	6" RECESSED LED CAN LIGHT, WITH TRIM, IC-RATED
	ELECTRIC PANEL BOARD
	CIRCUIT HOME RUN
	LIGHT SWITCH 120V COMMERCIAL GRADE
	LIGHT SWITCH - DIMMER
	JUNCTION BOX
	EXHAUST FAN - SEE MECH
	3 BLUB LED RESTROOM LIGHT FIXTURE, TO MATCH EXISTING

EQUIPMENT LIST	
1	SINGLE DOOR FREEZER 24"
2	DISHWASHER
3	MUG CHILLER
4	SPEED RAIL/ ICE 30"
5	BEER CHILLER 60"
6	DOUBLE DOOR REACH-IN REFRIGERATOR 54"
7	ALTO SHAAM 22-1/2' 208/240V
8	PREP TABLES T2' & 54"
9	MUG RACK
10	UNDER COUNTER TRASH CAN P.O.S.
11	AV EQUIPMENT BOX (ON WALL)
12	HAND SINK
13	WATER HEATER
14	UTILITY SINK
15	ICE MACHINE

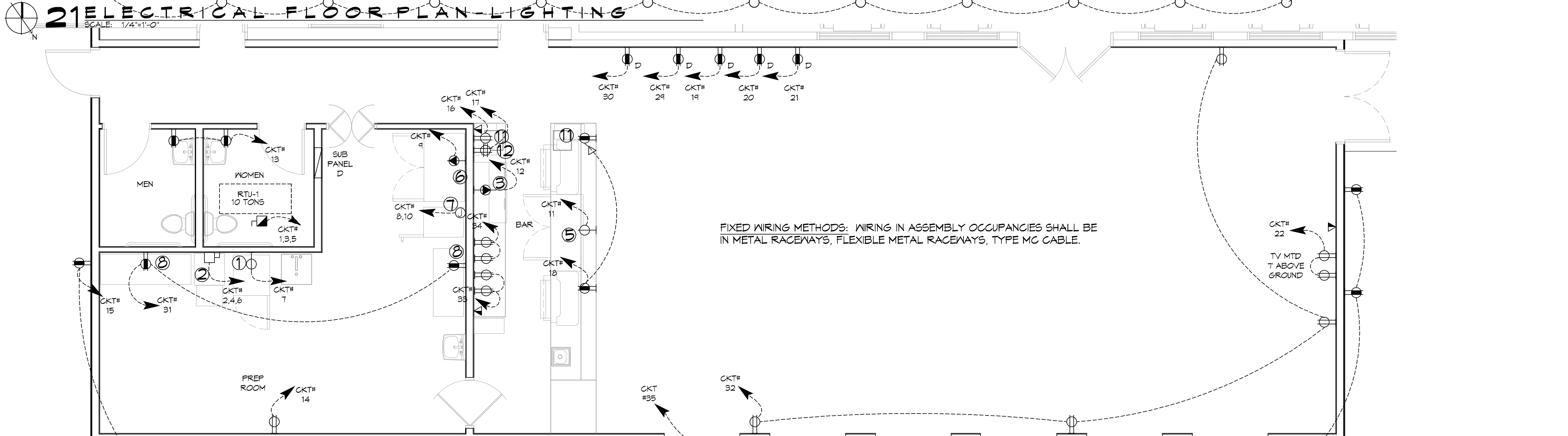
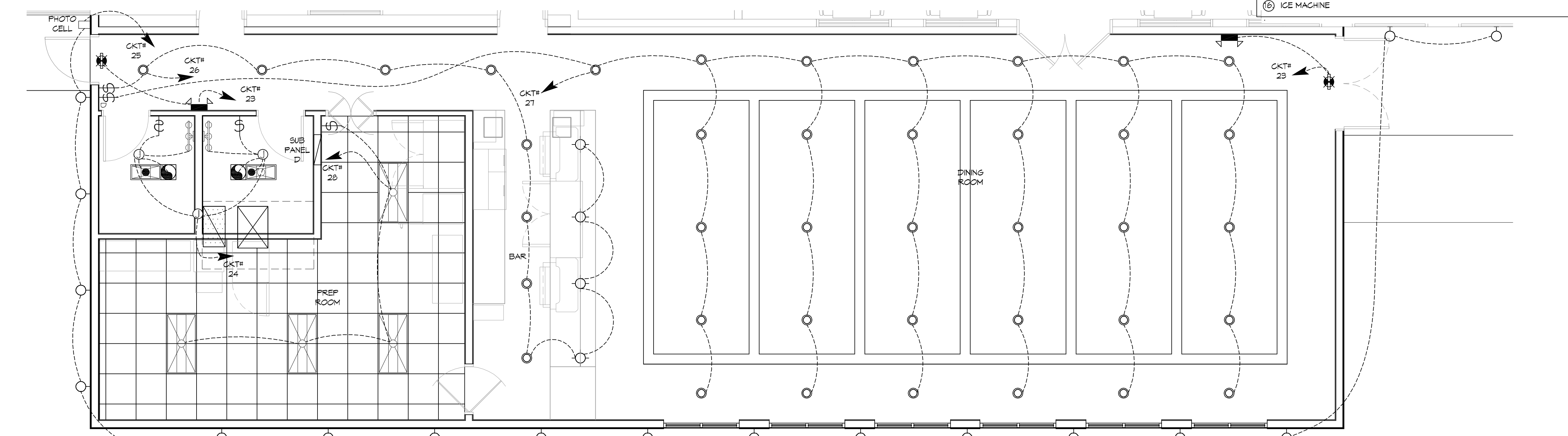
### GENERAL POWER NOTES

- ALL WORK SHALL CONFORM TO THE LATEST EDITION OF THE NATIONAL ELECTRICAL CODE, THE GOVERNING ELECTRICAL CODE AND ALL OTHER INSPECTION DEPARTMENTS HAVING JURISDICTION. OBTAIN CERTIFICATES OR APPROVAL WHERE REQUIRED. ELECTRICAL CONTRACTOR SHALL VERIFY ALL WIRE AND CONDUIT SIZES FOR MECHANICAL EQUIPMENT TO BE INSTALLED.
- ALL MATERIALS FURNISHED SHALL BE NEW AND SHALL BE U.L. LISTED.
- THE DRAWINGS INDICATE SIZE AND GENERAL LOCATION OF ALL LIGHTING FIXTURES, RECEPTACLES AND TELEPHONE OUTLETS, ETC. SHALL BE DETERMINED BY ACTUAL CONDITIONS IN THE FIELD.
- PRIOR TO BIDDING, CONTRACTOR SHALL VISIT THE JOB SITE AND FAMILIARIZE THEMSELVES WITH THE EXISTING CONDITIONS.
- ELECTRICAL CONTRACTOR SHALL COORDINATE HIS WORK WITH OTHER TRADES AND WITH OTHER CONTRACTORS WHOSE WORK MAY AFFECT THIS INSTALLATION.
- ELECTRICAL CONTRACTOR SHALL COORDINATE INCOMING ELECTRICAL SERVICE WITH UTILITY COMPANY AND INCLUDE IN HIS BID ALL CHARGES AND FEES INCURRED IN MODIFICATIONS.
- ELECTRICAL CONTRACTOR SHALL COORDINATE THE TELEPHONE INSTALLATION WITH THE TELEPHONE COMPANY AND THE GENERAL CONTRACTOR.
- ELECTRICAL CONTRACTOR, BEFORE INSTALLING ANY OF THE WORK, SHALL SEE THAT IT DOES NOT INTERFERE WITH CLEARANCES REQUIRED FOR FINISHED COLUMNS, HUNG CEILINGS, PLASTER, PARTITIONS, WALLS, ETC. AS SHOWN IN THE ARCHITECTURAL DRAWINGS AND DETAILS. IF ANY WORK IS INSTALLED AND IT LATER DEVELOPS THAT SUCH DETAILS OR DESIGN CANNOT BE FOLLOWED, THE CONTRACTOR, AT HIS OWN EXPENSE, SHALL MAKE SUCH CHANGES IN THE WORK AS DIRECTED BY THE ARCHITECT, AS WELL AS TO PERMIT THE INSTALLATION OF THE ARCHITECTURAL WORK AS SHOWN ON THE PLANS AND DETAILS.
- PERFORM TEST REQUIRED BY THE OWNER OR THE ENGINEER IN CONNECTION WITH THE OPERATION OF THE ELECTRICAL SYSTEM IN THE BUILDING. ALL TESTS SHALL BE MADE IN ACCORDANCE WITH THE LATEST STANDARD OF THE IEEE AND THE NATIONAL ELECTRICAL CODE.
- MINIMUM CONDUCTOR SIZE SHALL BE #12, 600V INSULATION. MINIMUM SIZE CONDUIT SHALL BE 3/4" ELECTRICAL METALLIC TUBING (EMT) FOR INTERIOR USE, 3/4" RIGID ALUMINUM FOR EXTERIOR USE ABOVE GRADE AND 1" SCHEDULE 40 P.V.C. BURIED A MINIMUM OF 18" FOR NON-VEHICULAR TRAFFIC AREAS. FOR CONDUITS BELOW GRADE, EMT SHALL BE USED WITH METAL STUD CONSTRUCTION AND ALL ASSEMBLY OCCUPANCIES USE NMC IN WOOD CONSTRUCTION. 6 FT LENGTH MC CABLE IS ALLOWED ABOVE DROPPED CEILING. INTERIOR FITTINGS SHALL BE CAST WHERE EXPOSED ON WALLS, AND EXTERIOR FITTINGS SHALL BE CAST BOXES WITH NEMA 3R COVER(S).
- CONTRACTOR SHALL INSTALL WIRING AND OTHER CIRCUIT COMPONENTS TO MATCH EQUIPMENT ACTUALLY INSTALLED.
- ALL 120V RUNS LONGER THAN 60 FEET SHALL BE #10 AWG AND 21TV RUNS LONGER THAN 150 FEET SHALL BE #10 AWG UNLESS NOTED OTHERWISE.
- INSTALL GROUND FAULT RECEPTACLES AT RECEPTACLE LOCATIONS WITHIN 5' OF SINKS OR LAVATORIES, AND AT EXTERIOR LOCATIONS. EXTERIOR RECEPTACLES SHALL ALSO BE WATERPROOF. ALL RECEPTACLES IN THE KITCHEN AREA SHALL HAVE GROUND FAULT PROTECTION.
- BONDING AND GROUNDING SHALL BE IN ACCORDANCE WITH NFPA 70:250-63, NFPA 250-23, 250-11 & 250-12.
- GROUND NEUTRAL IN ACCORDANCE WITH NFPA 70:250-23b.
- FUSES SHALL BE ITC CLASS K5, 250 VOLT, 200,000 AMP INTERRUPTING CAP.
- PROVIDE SERVICES OF A FIRE/SMOKE DETECTION AND ALARM COMPANY TO DESIGN AND INSTALL ALARM SYSTEM TO MEET REQUIREMENTS OF THE STATE FIRE MARSHALL AND THE FIRE DISTRICT.
- EXTERIOR LIGHTING SHALL BE SHADED OR INWARDLY DIRECTED IN SUCH A MANNER SO THAT NO DIRECT LIGHTING OR GLARE IS CAST BEYOND THE PROPERTY LINE. THE INTENSITY OF SUCH LIGHTING SHALL NOT EXCEED ONE FOOT CANDLE AS MEASURED AT THE ADJUTING PROPERTY LINE.
- ALL ELECTRICAL, MECHANICAL AND PLUMBING PENETRATIONS THROUGH RATED CONSTRUCTION SHALL BE FIRE CAULKED. (PENETRATIONS THROUGH RATED CONSTRUCTION SHALL BE SEALED WITH A MATERIAL CAPABLE OF PREVENTING THE PASSAGE OF FLAMES AND HOT GASES WHEN TESTED IN ACCORDANCE WITH ASTM-E814.)
- VERIFY ELECTRICAL CONNECTIONS PER MANUFACTURER'S RECOMMENDATIONS.

**DAMMON ENGINEERING, INC.**  
LOUISIANA & MISSISSIPPI

www.dammonengineering.com  
554 Old Spanish Trail  
Slidell, LA 70458  
PH: 985.649.5832

Chief Engineer: Brian Misch  
Slidell, LA 70458



### GENERAL LIGHTING NOTES

- ALL WORK SHALL COMPLY WITH APPLICABLE NATIONAL, STATE, AND LOCAL CODES, RULES, REGULATIONS, AND REQUIREMENTS OF THE SERVICE UTILITY COMPANY.
- GENERAL CONTRACTOR SHALL NOTIFY THE ARCHITECT IMMEDIATELY IF ANY CONFLICTS OCCUR BETWEEN LIGHTING AND ANY OTHER TRADE. DO NOT PROCEED WITH INSTALLATION IN THAT AREA UNTIL CONFLICT HAS BEEN RESOLVED TO THE SATISFACTION OF THE ARCHITECT AND ENGINEER.
- REFER TO ARCHITECTURAL DRAWINGS FOR EXACT LOCATION AND MOUNTING INSTRUCTIONS FOR ALL LIGHT FIXTURES. NOTIFY THE ARCHITECT AND ENGINEER OF ANY DISCREPANCIES BETWEEN THESE PLANS AND THE ARCHITECTURAL PLANS RELATING TO QUANTITY, TYPE AND LOCATION OF DEVICES AND/OR FIXTURES.
- WHEN SPECIFIC LIGHT FIXTURE HAS BEEN SPECIFIED IN THE FIXTURE SCHEDULE, ELECTRICAL CONTRACTOR SHALL PROVIDE COMPLETE ASSEMBLY INCLUDING ALL PARTS AND HARDWARE TO INSURE PROPER FUNCTIONING FIXTURE.
- ALL CONDUCTORS SHALL BE A MINIMUM OF #12 AWG UNLESS NOTED OTHERWISE.
- ALL 120V RUNS LONGER THAN 60 FEET SHALL BE #10 AWG AND 21TV RUNS LONGER THAN 150 FEET SHALL BE #10 AWG UNLESS NOTED OTHERWISE.
- ALL CONDUCTORS SHALL BE COPPER.
- WHERE CONDUCTOR SIZES ARE NOTED ON DRAWINGS, THAT WIRE SIZE SHALL BE THROUGH THE ENTIRE RUN UNLESS OTHERWISE NOTED.
- MOUNTED LIGHT SWITCHES 48" AFF UNLESS NOTED OTHERWISE ON ARCHITECTURAL DRAWINGS.
- WHERE MORE THAN ONE SWITCH OCCURS IN THE SAME LOCATION, THEY SHALL BE INSTALLED IN A GANG TYPE BOX UNDER ONE COVER PLATE. ALL GANGED SWITCHES SHALL HAVE A COMMON SEAMLESS FACEPLATE. EACH MULTI-GANGED BOX SHALL BE NO MORE THAN SIX (6) SWITCHES WIDE. WHERE MORE THAN SIX (6) SWITCHES ARE SHOWN AT ONE (1) LOCATION, ADDITIONAL MULTI-GANGED BOXES SHALL BE STACKED VERTICALLY AND THE WIDTH OF THE MULTI-GANGS SHALL BE AS EVEN AS POSSIBLE.
- EACH DIMMER SWITCH SHALL HAVE A WATTAGE RATING 25% HIGHER THAN THE TOTAL WATTAGE OF ALL LIGHTS TO BE CONTROLLED BY THE DIMMER. DIMMER SIZES 600, 1000, 1500, AND 2000 WATTS, LUTRON NOVA T-STAR. WHERE SWITCHES ARE GANGED WITH DIMMERS, THE SWITCHES SHALL ALSO BE LUTRON NOVA T-STAR. FLUORESCENT AND LOW VOLTAGE DIMMERS SHALL BE LUTRON NOVA T-STAR.
- WHERE FLUORESCENT FIXTURES ARE SHOWN TO BE DIMMED, THE FIXTURES SHALL HAVE DIMMING TYPE BALLASTS WHICH ARE COMPATIBLE WITH THE SPECIFIED DIMMERS.
- WHERE LED FIXTURES/LAMPS ARE SHOWN TO BE DIMMED, THE DIMMER SHALL BE COMPATIBLE WITH THE FIXTURE/LAMP SPECIFIED OR PROVIDED.
- ALL EMERGENCY EXIT LIGHT FIXTURES SHALL HAVE 90 MINUTE BATTERY BACKUP WITH INTEGRAL TEST BUTTON AND SHALL BURN CONTINUOUSLY.
- ALL FLUORESCENT FIXTURES THAT UTILIZE DOUBLE-ENDED LAMPS AND CONTAIN BALLASTS SHALL BE PROVIDED WITH A DISCONNECTING MEANS IN ACCORDANCE WITH NEC 410.73b.

REVISIONS

#	DESCRIPTION	DATE

SEAL:

**BRIAN A. MISTCH**  
Professional Engineer  
License No. 30187

NEW DINING ADDITION

**SOUTHSIDE CAFE**

9154 PONTCHARTRAIN DR  
SLIDELL, LA 70458

JOB No: 2584 DATE: 02-07-2019  
DRAWN BY: JAGM/KM CHECKED BY: CKD

SHEET TITLE: POWER AND LIGHTING PLAN

DRAWING NUMBER: **E101**

SHEET No: 15 of 15