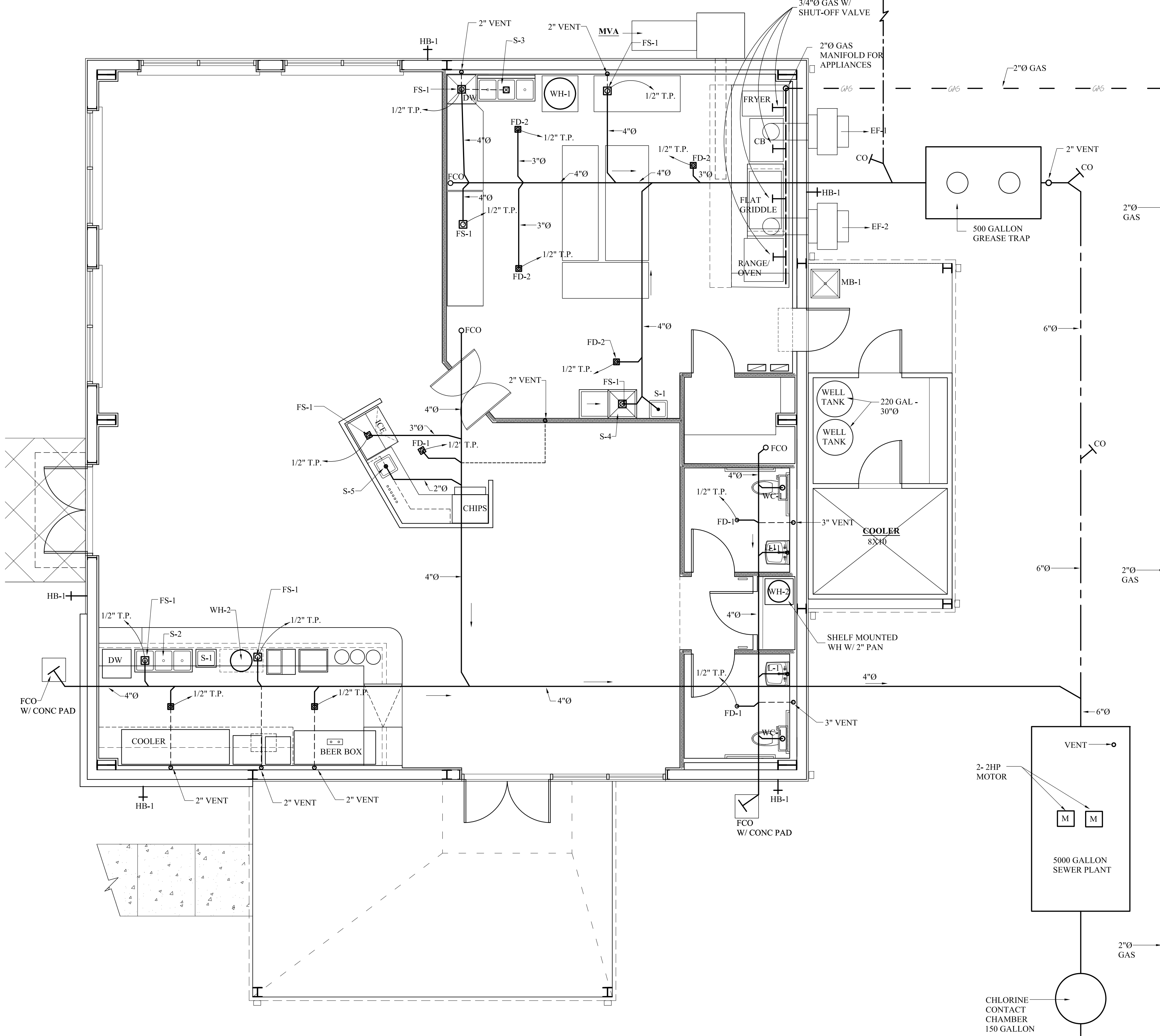
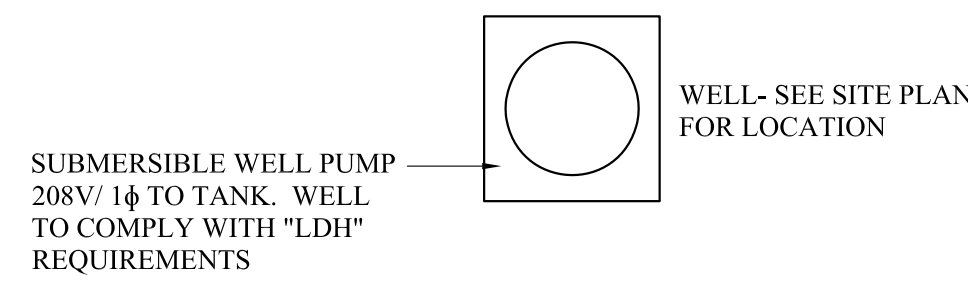


NOTE:

ALL HORIZONTAL DRAINAGE PIPING SHALL SLOPE ACCORDING TO IPC-2015 SECTION 704 TABLE 704.1:

2 1/2" OR LESS	MIN 1/4" PER FOOT
3" TO 6"	MIN 1/8" PER FOOT
8" OR LARGER	MIN 1/16" PER FOOT



PLUMBING FIXTURE SCHEDULE

- WC-1** HANDICAPPED WATER CLOSET: TWO-PIECE LOW CONSUMPTION TYPE PRESSURE ASSISTANT HANDICAPPED TOILET MINIMUM 17 1/2" HIGH, 1.5 GPF, COLOR WHITE.
- L-1** LAVATORY - (HANDICAPPED): WALL MOUNTED 10" X 22" ADA LAVATORY WHITE FINISH VITREOUS CHINA WITH CONCEALED ARM CARRIER TO FIT UNIT. PROVIDE WITH 4" CENTER SELF-CLOSING METERED LOW WATTAGE FAUCET SET. PROVIDE WITH GRID DRAIN, ANGLE SUPPLIES WITH STOPS, FLEXIBLE RISERS, "P" - TRAP WITH TRUBRO ADA INSULATION KIT.
- FD-1** 2" DIA. FLOOR DRAIN W/ 1/2" DIA. TRAP PRIMER AND "P" TRAP. PROVIDE WITH DRAIN AND STRAINER WITH BRASS ROUND COVER CAP.
- FD-2** 3" DIA. FLOOR DRAIN W/ 1/2" TRAP PRIMER AND "P" TRAP. PROVIDE WITH DRAIN STRAINER BASKET WITH BRASS SQUARE COVER CAP.
- FS-1** 3" DIA. FLOOR SINK WITH DEEP SEAT BUCKET AND TRAP. PROVIDE WITH STRAINER BASKET AND 1/2 GRATE.
- FD-3** 4" DIA. EXTERIOR FLOOR DRAIN W/ 1/2" TRAP PRIMER. PROVIDE WITH DEEP TRAP AND STRAINER BASKET, SQUARE CAST IRON GRATE, AND REMOVABLE SEAT CAP WHEN NOT IN USE. (EXTERIOR DRAIN FOR DUMPSTER PAD)
- S-1** 17" X 19" STAINLESS STEEL HAND SINK, LEG SUPPORTED. PROVIDE WITH HOT AND COLD WATER, "P" TRAP, ANGLE VALVES, GRID DRAIN, FLEXIBLE RISERS AND STOPS. AND WRIST HANDLES. PROVIDE WITH DIRECT SEWER CONNECTION.
- S-2** BAR SINK - HOT AND COLD WATER, LEG MOUNTED STAINLESS STEEL THREE (3) COMPARTMENT 21" X 48" BAR SINK, LEG SUPPORTED. PROVIDE WITH 8" SWING SPOUT, HOT AND COLD WATER, AND BACK SPLASH. PROVIDE WITH INDIRECT CONNECTION WITH AIR GAP TO FLOOR SINK ON DRAIN HUB. PROVIDE WRIST HANDLES ON FAUCET.
- S-3** DISHWASHER SINK - 24" X 48" THREE (3) COMPARTMENT LEG SUPPORTED STAINLESS STEEL SINK. PROVIDE WITH BACKSPLASH AND DRAIN BOARD. PROVIDE WITH ACCESSORIES AND INDIRECT AIR GAP AS S-2. PROVIDE HOT AND COLD WATER.
- S-4** PROVIDE WASH SINK. 24" X 24" LEG SUPPORTED SINGLE BOWEL STAINLESS STEEL SINK WITH SIDE DRAIN BOARD, 24" X 24". PROVIDE HOT AND COLD WATER, INDIRECT SEWER CONNECTION TO FLOOR SINK OR HUB DRAIN. ACCESSORIES SAME AS S-2.
- S-5** COUNTER MOUNTED RIM STAINLESS STEEL SINGLE BOWL SINK 15" X 15" X 6" DEEP WITH 4" SPREAD LEVER FAUCETS AND 6" SPOUT. PROVIDE DAME ACCESSORIES AS S-1 / S-4 SINK, TO HAVE DIRECT DRAIN CONNECTION.
- MP-1** LEG SUPPORTED 23" X 25" MUSTEE MODEL - "14CP" LEG SUPPORTED MOP BASIN, 33" HIGH, PROVIDE WITH 6" SWING SPOUT FAUCET, FLEXIBLE SUPPLY LINES, "P" TRAP, DRAIN, STOPPER, FLEXIBLE SUPPLY AND SHUT-OFF VALVES.
- HB-1** EXTERIOR FREEZE PROOF ANTI-SIPHON COLD WATER FAUCET WITH 3/4" C.W. CONNECTION.
- HB-2** EXTERIOR FREEZE PROOF SNIT-SIPHON FREEZE PROOF 3/4 C.W. / H.W. CONNECTION BOX.
- WH-1** EQUAL TO 52-GALLON ELECTRIC WATER HEATER WITH UPPER AND LOWER 4,500-WATT HEATING ELEMENTS, 230 V SINGLE PHASE POWER. PROVIDE WITH GALVANIZED 2" DRAIN PAN. PROVIDE WITH WATTS RECIRCULATION PUMP. PROVIDE WITH 3/4 INCH CONNECTION.
- WH-2** EQUAL TO 15-GALLON ELECTRIC WATER HEATER, WITH ONE (1) 2- KW HEATING ELEMENT, 230 V SINGLE PHASE, PROVIDE WITH GALVANIZED 2" DRAIN PAN. PROVIDE WITH 3/4" CONNECTIONS. EQUAL TO A.O. SMITH DEL-15

NOTE: ALL INDIRECT DRAIN AIR BREAKS SHALL COMPLY WITH SECTION 802.2.1 OF 2015 INTERNATIONAL PLUMBING CODE AND SHALL NOT BE LESS THAN TWICE THE EFFECTIVE OPENING OF THE INDIRECT WASTE PIPE AND THE FLOOR RECEPTOR. ALL HAND SINKS SHALL HAVE DIRECT PLUMBING (S-1, MB-1) CONNECTIONS. INDIRECT FIXTURES S-2, S-3, S-4.

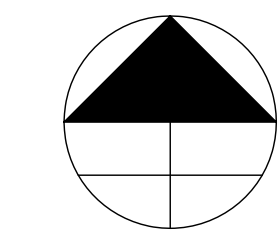
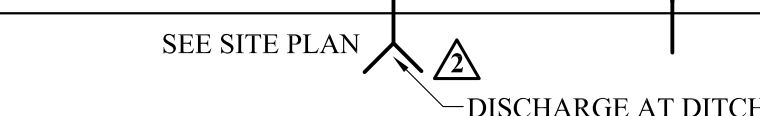
MISCELLANEOUS PLUMBING ITEMS:

- A.** VB - 1, VACUUM BREAKER: INSTALL VACUUMS BREAKER ON COLD WATER INLET TO WATER HEATER UNIT SHALL BE EQUAL TO WATTS 36 A.
- B.** WHA, WATER HAMMER ARRESTORS: STAINLESS STEEL, BELLOWS / COMPRESSION CHAMBER TYPE, PRE - CHARGED AND PERMANENTLY SEALED AT THE FACTORY. EQUAL TO SMITH'S HYDROTOL # 5005.
- C.** INTERIOR FINISHED FLOOR CLEANOUT: SERIES 58660 BY JOSAM OR EQUAL. LACQUERED CAST IRON, TWO PIECE BODY WITH DOUBLE DRAINAGE FLANGE, WEEP HOLES, REVERSIBLE CLAMPING COLLAR AND ADJUSTABLE NICKEL BRONZE STRAINER, ROUND WITH SCORIATED COVER IN SERVICE AREA AND ROUND WITH DEPRESSED COVER TO ACCEPT FLOOR FINISH IN FINISHED FLOOR AREAS.
- D.** CLEANOUTS AND TEST TEES: FLOOR CLEANOUTS SHALL BE JOSAM SERIES 58340, ZURN Z1425 - 3 OR APPROVED EQUAL. WALL CLEANOUTS SHALL BE JOSAM SERIES 58710, ZURN Z1440 - 1 OR APPROVED EQUAL. EXTERIOR CLEANOUTS SHALL BE JOSAM SERIES 58310, ZURN Z1420 - 27 OR APPROVED EQUAL, SET IN 15" X 15" X 6" CONCRETE PAD.
- E.** VALVE BOXES: EACH GATE VALVE SHALL BE PROVIDED WITH AN ADJUSTABLE, TWO PIECE, CAST IRON VALVE BOX OF A SIZE SUITABLE FOR THE VALVE. THE HEAD SHALL BE ROUND AND THE LID SHALL HAVE THE WORD "WATER" CAST ON IT. THE LEAST DIAMETER OF THE SHAFT OF THE BOX SHALL BE 5". EACH BOX SHALL BE GIVEN A HEAVY COAT OF BITUMINOUS PAINT AND SET IN AN 18" X 18" X 6" CONCRETE PAD.
- F.** BP - 1, BACKFLOW PREVENTER: REDUCED PRESSURE EQUAL TO WATTS WITH AIR GAP AND STRAINER. PIPE DRAIN TO FLOOR DRAIN. EQUAL PRODUCTS BY FEBCO, HERSEY, ZURN.
- G.** SHOCK ABSORBERS: SHOCK ABSORBERS SHALL BE INSTALLED ON ALL HOT AND COLD WATER SUPPLIES NEAR THE FAUCET. SHOCK ABSORBERS SHALL BE EQUAL TO PRECISION PLUMBING PRODUCTS, INC. WITH SIZES AS RECOMMENDED BY THE MANUFACTURER.

FLOOR PLAN- PLUMBING PLAN

SCALE: 1/4" = 1'-0"

P-1



THESE DESIGN AND CONSTRUCTION DOCUMENTS AT THE SOLE PROPERTY OF JOSEPH F. SCHNEIDER, JR. AIA, ARCHITECT. NO USE OR REPRODUCTION OF THESE DOCUMENTS OR PARTIAL USE OR PARTIAL REPRODUCTION IS ALLOWED. NO USE OF THESE DRAWINGS WITHOUT THE WRITTEN EXPRESSED PERMISSION OF JOSEPH F. SCHNEIDER, JR. ARCHITECT IS ALLOWED.

REVISIONS	BY
1	10/21/2019 JFS
2	11/20/2019 JFS

**NEW RESTAURANT FOR
HABANERO'S MEXICAN KITCHEN**
1938 LA HWY 22 WEST
MADISONVILLE, LOUISIANA 70447

**JOSEPH F. SCHNEIDER JR., AIA
ARCHITECT**
105 EVANGELINE DRIVE, SLIDELL, LOUISIANA 70460
(985) 847-0714
jfsarchitect@charter.net

DRAWN H. SCHNEIDER
CHECKED J. SCHNEIDER
DATE 08/29/2019
SCALE AS NOTED
JOB NO.
SHEET P-1
OF SHEETS