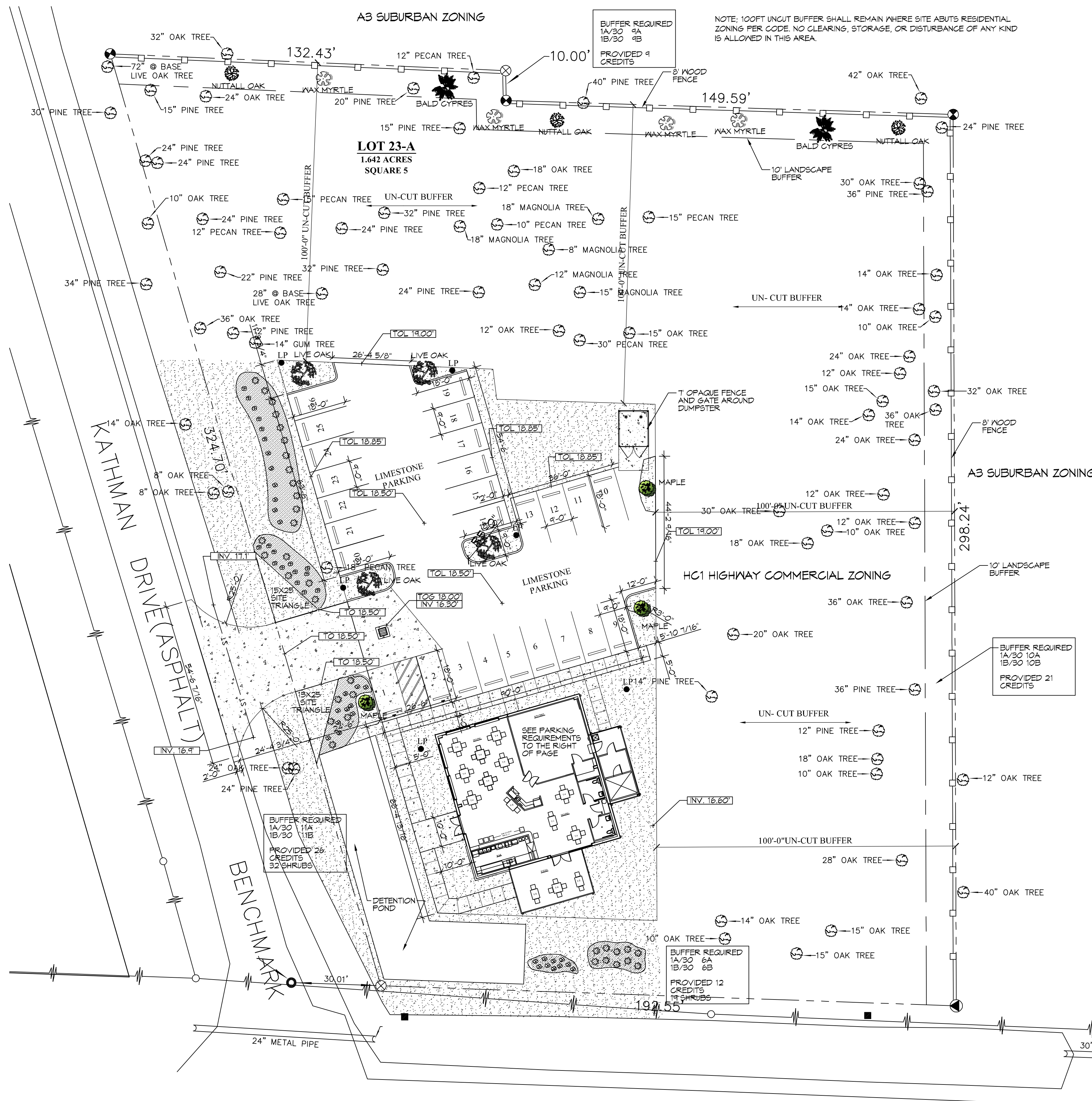


FILE NAME: A:\2019\19-0000\19-0000.dwg
 PLOT DATE: 11/19/2019
 PLOT TIME: 10:44:47 AM
 PLOT USER: BROWN, JR.
 PLOT DEVICE: HPGLA240



LOUISIANA HIGHWAY NO. 22
(ASPHALT)

LANDSCAPING PLAN
SCALE: 1" = 20'-0"

LANDSCAPING NOTES

- ALL LANDSCAPING INDICATED ON THIS SHEET WILL BE INSTALLED UNDER SEPARATE CONTRACT BY OTHERS AND NOT IN CONTRACT "N/C" AND ARE SHOWN FOR COORDINATION AND PERMITTING PURPOSES ONLY.
- ALL LANDSCAPING SHALL BE DESIGNED AND INSTALLED BY A LANDSCAPING COMPANY LICENSED IN THE STATE OF LOUISIANA.
- CONTACT LOCAL UNDERGROUND UTILITY SERVICES FOR UTILITY LOCATION AND IDENTIFICATION PRIOR TO COMMENCING WORK.
- PERFORM EXCAVATIONS IN THE VICINITY OF UNDERGROUND UTILITIES WITH CARE AND BY HAND. IF NECESSARY, THE CONTRACTOR BEARS FULL RESPONSIBILITY FOR THIS WORK AND DISRUPTION OR DAMAGE TO UTILITIES AND SHALL BE IMMEDIATELY REPAIRED AND AT NO EXPENSE TO THE OWNER.
- ITEMS ENCOUNTERED BELOW GRADE AND NOT SHOWN ON THE DRAWINGS SHALL BE BROUGHT TO THE ATTENTION OF THE CONTRACTOR.
- CONTACT THE LOCAL UNDERGROUND SERVICE UPDATE FOR UTILITY LOCATION AND IDENTIFICATION PRIOR TO DEMOLITION.

LEGEND

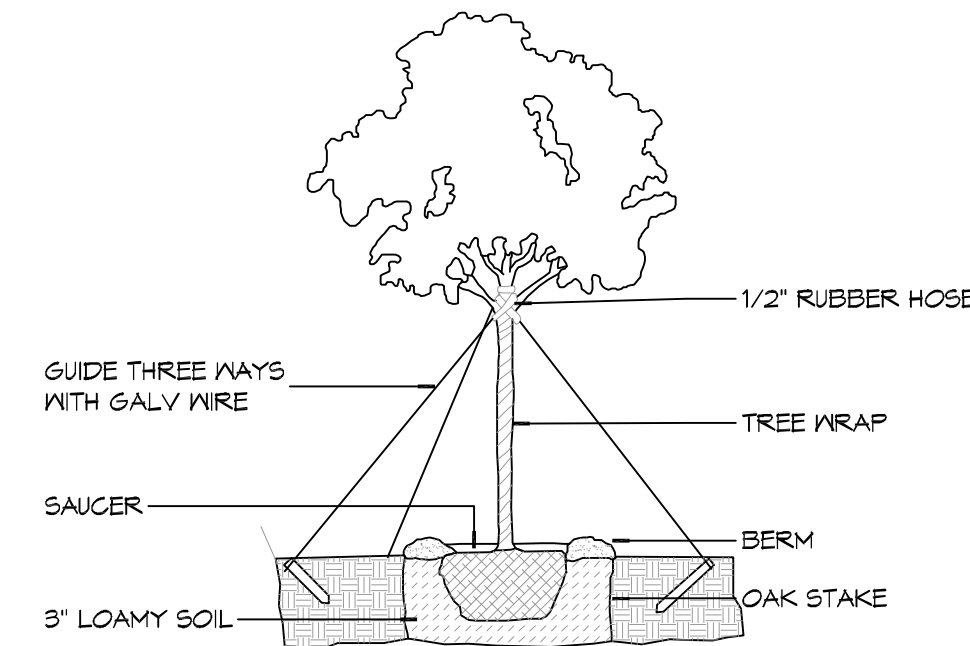
- NUTTALL OAK
ALL CLASS "A" TREES, AT THE TIME OF PLANTING, SHALL HAVE A MINIMUM CALIPER OF AT LEAST TWO (2) INCHES, MEASURED SIX (6") INCHES ABOVE THE ROOT BALL, AND A MINIMUM HEIGHT OF 10 TO 12 FEET AT TIME OF PLANTING AND A MATURE AVERAGE CROWN SPREAD OF 50 FEET.
 - BALD CYPRESS
ALL CLASS "A" TREES, AT THE TIME OF PLANTING, SHALL HAVE A MINIMUM CALIPER OF AT LEAST TWO (2) INCHES, MEASURED SIX (6") INCHES ABOVE THE ROOT BALL, AND A MINIMUM HEIGHT OF 10 TO 12 FEET AT TIME OF PLANTING AND A MATURE AVERAGE CROWN SPREAD OF 50 FEET.
 - LIVE OAK
ALL CLASS "A" TREES, AT THE TIME OF PLANTING, SHALL HAVE A MINIMUM CALIPER OF AT LEAST TWO (2) INCHES, MEASURED SIX (6") INCHES ABOVE THE ROOT BALL, AND A MINIMUM HEIGHT OF 10 TO 12 FEET AT TIME OF PLANTING AND A MATURE AVERAGE CROWN SPREAD OF 50 FEET.
 - MAPLE
ALL CLASS "A" TREES, AT THE TIME OF PLANTING, SHALL HAVE A MINIMUM CALIPER OF AT LEAST TWO (2) INCHES, MEASURED SIX (6") INCHES ABOVE THE ROOT BALL, AND A MINIMUM HEIGHT OF 10 TO 12 FEET AT TIME OF PLANTING AND A MATURE AVERAGE CROWN SPREAD OF 50 FEET.
 - MAX MYRTLE
ALL CLASS "B" TREES, AT THE TIME OF PLANTING, SHALL HAVE A MINIMUM CALIPER OF AT LEAST (1-1/2") ONE AND HALF INCHES, MEASURED SIX (6") INCHES ABOVE THE ROOT BALL, AND A MINIMUM HEIGHT OF 8 FEET AT TIME OF PLANTING AND A MATURE AVERAGE CROWN SPREAD OF 20 FEET.
 - AZALEA
SHRUB: A RELATIVELY LOW-GROWING BUSHY PLANT, USUALLY WITH WOODY STEMS. FOR THE PURPOSE OF THIS DEFINITION, GROUND COVER, TREES AND ANNUALS ARE NOT CONSIDERED SHRUBS.
 - CAMELLIA
SHRUB: A RELATIVELY LOW-GROWING BUSHY PLANT, USUALLY WITH WOODY STEMS. FOR THE PURPOSE OF THIS DEFINITION, GROUND COVER, TREES AND ANNUALS ARE NOT CONSIDERED SHRUBS.
 - GRASS
 - PINE MULCH
- NOTE: ALL TREES & SHRUBS TO BE MULCHED 1/3" DEPTH. ALL OTHER AREAS TO BE COVERED IN LIVE GROUND COVER OR SOD.

LICENSED LANDSCAPER
BILL BROWN JR.
LUXURY LANDSCAPE SERVICES 985-714-5211
HORT. #2377 Lic. #4440
12-09-2019

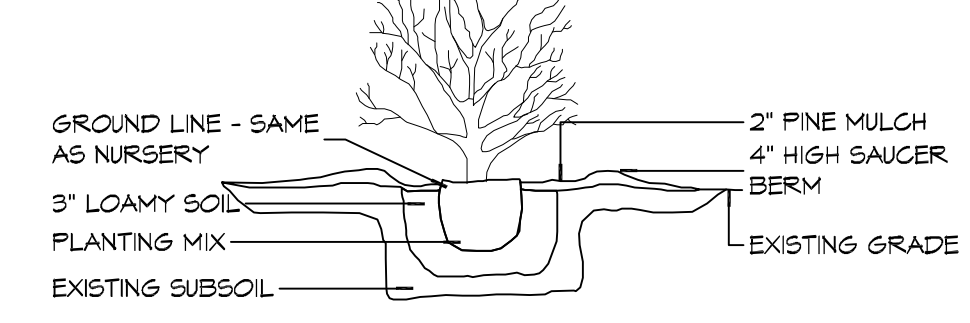
PLANNING
ZONED - HC-1 HIGHWAY COMMERCIAL ZONING

SEATING SCHEDULE
T-2 TABLE (2 SEATS) - 4 EACH = 8 SEATS
T-4 TABLE (4 SEATS) - 10 EACH = 40 SEATS
BAR = 9 SEATS

PARKING REQUIRED
STAFF 1 PER STAFF & WORKERS
DINING 57 SEATS @ 1 PER 3 SEATS = 19 SPACES
TOTAL REQUIRED PARKING = 26 SPACES



TYPICAL TREE PLANTING
NOTE: ALWAYS PLANT EQUAL TO OR 1" - 2" ABOVE GROUND.



TYPICAL SHRUB PLANTING

GROUND COVER
DETAILS
SCALE: NTS

DAMMON ENGINEERING, INC.
LOUISIANA & MISSISSIPPI
www.dammonengineering.com
info@dammonengineering.com
PH: 985.697.1824
Chief Engineer: Brian Mitchell, PE
354 Old Spanish Trail
Shreveport, LA 71208

DATE	REVISIONS	DESCRIPTION

SEAL:

NEW RESTAURANT
ABACURANT
RESTAURANT

SHEET TITLE:
LANDSCAPING PLAN

DRAWING NUMBER:
L101
SHEET No: 3 of 3