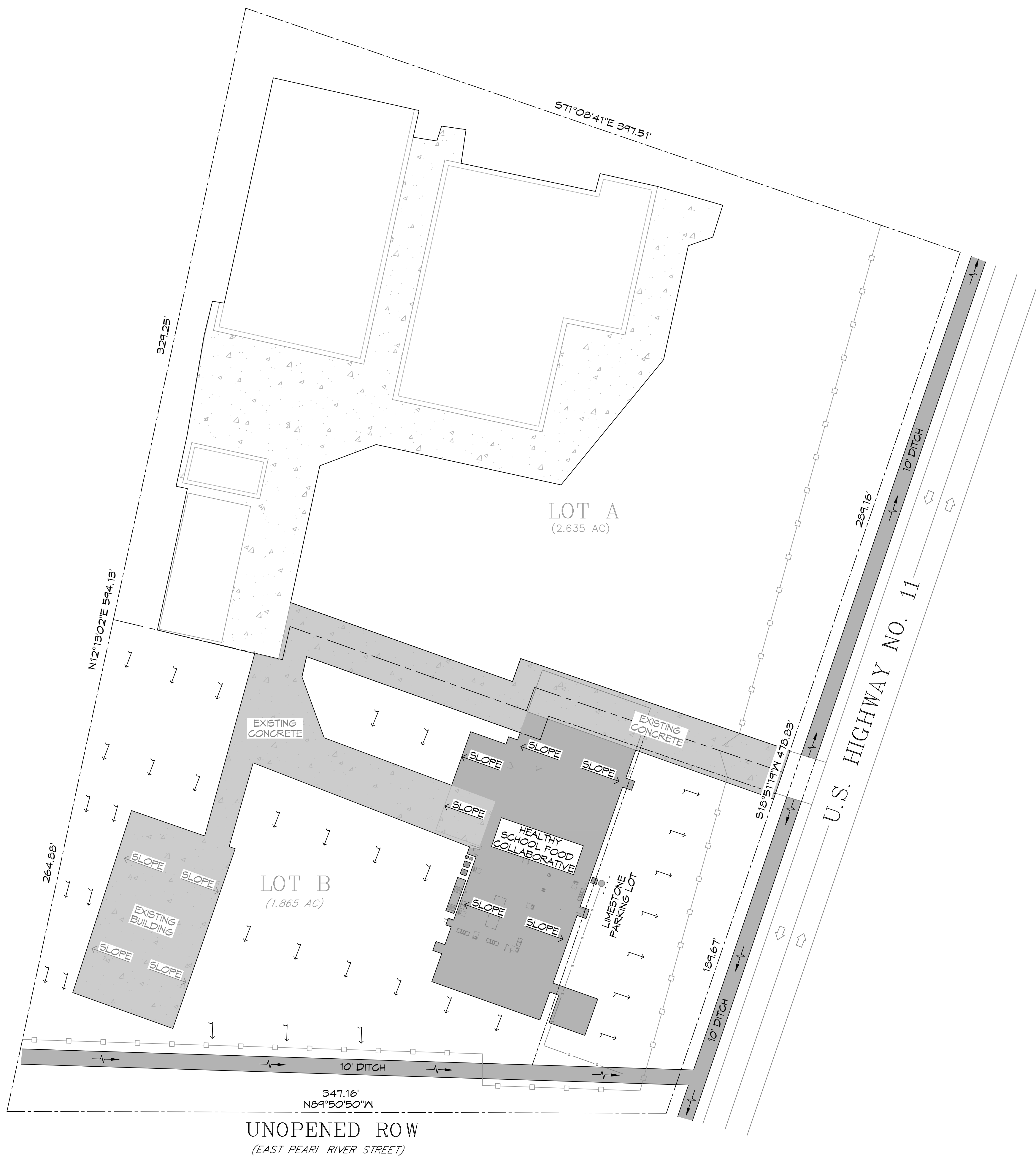


DTG: MAFS, A/L: M220000011448 - Healthy School Food Collaborative, Louisiana Worksheet, 06/22/2022, 10:14 AM



LEGEND

- PROPERTY LINE
- - - PROPERTY SETBACK
- EXISTING FENCE
- ← FLOW DIRECTION OF DRAINAGE
- ← FLOW DIRECTION OF DITCH
- ↘ SLOPE DIRECTION OF ROOF SLOPE

DAMMON
ENGINEERING, INC.
 LOUISIANA & MISSISSIPPI

Chief Engineer: Brian Mistich, PE
 554 Old Spanish Trail
 Slidell, LA 70488
 www.dammonengineering.com
 info@dammonengineering.com
 PH: 985.649.5832

#	DESCRIPTION	REVISIONS	DATE

SEAL:

P:\Stamps\Brian Lo Stamp Professional.jpg

NEW FOOD DISTRIBUTION
HEALTHY SCHOOL
FOOD COLLABORATIVE

62271 HWY 11
 PEARL RIVER, LOUISIANA 70452
 JOB No: 2445 | DATE: 06-22-2022
 DRAWN BY: CKD | CHECKED BY: KJK

SHEET TITLE:
 EXISTING SITE DRAINAGE PLAN

DRAWING NUMBER:
C102

SHEET No: 2 of 4

EXISTING SITE DRAINAGE PLAN
 SCALE: 1" = 30'