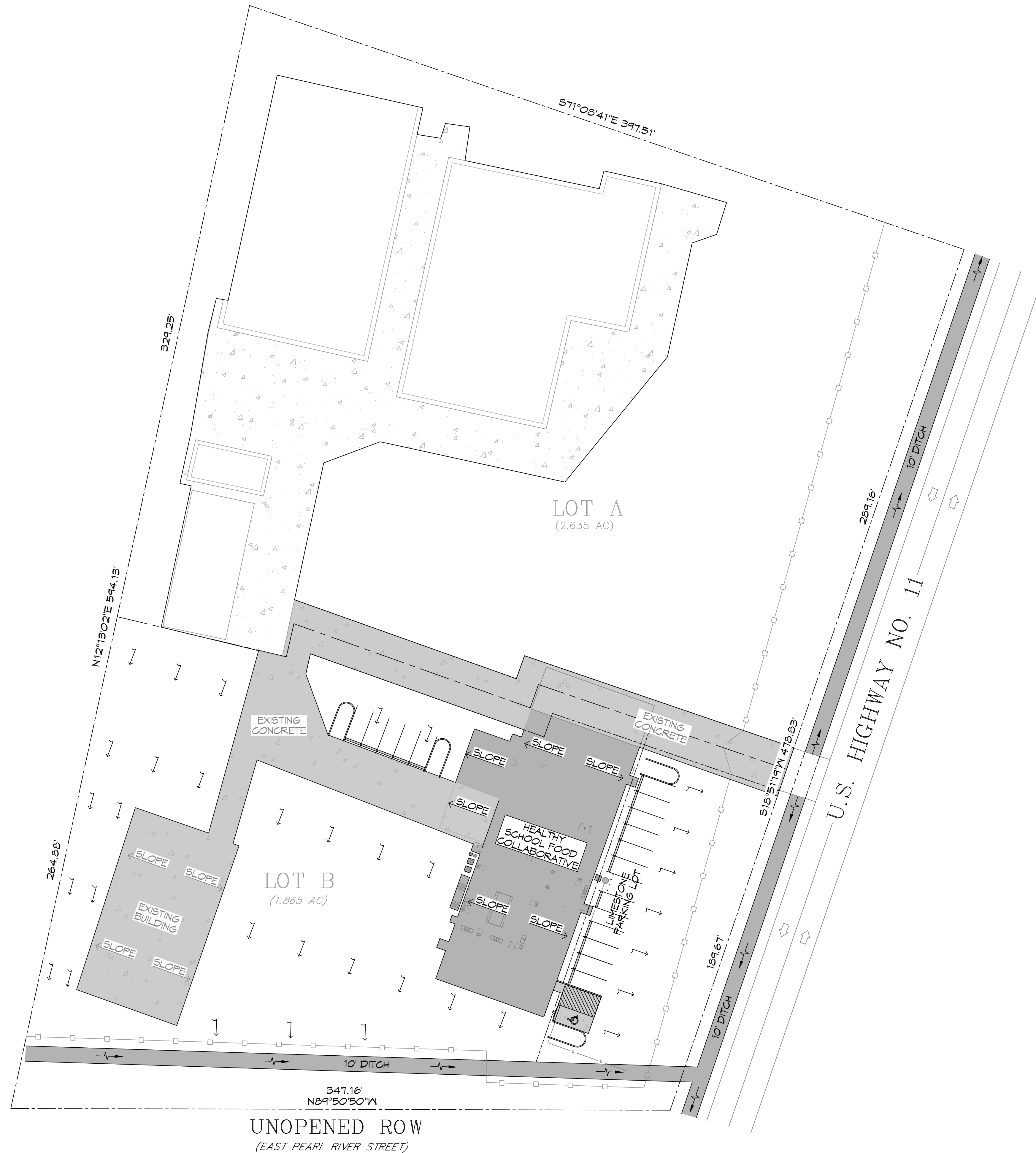


FILE NAME: \\s:\projects\2448 - Healthy School Food Collaborative\Drawings\2448\2448_022 - Existing Site Drainage Plan.dwg, Date: 06/22/2022, 11:23:31 AM



LEGEND	
---	PROPERTY LINE
- - - -	PROPERTY SETBACK
□-□	EXISTING FENCE
↖	FLOW DIRECTION OF DRAINAGE
↖	FLOW DIRECTION OF DITCH
↖	DIRECTION OF ROOF SLOPE

UNOPENED ROW
 (EAST PEARL RIVER STREET)
2 EXISTING SITE DRAINAGE PLAN
 SCALE: 1" = 30'

DAMMON
ENGINEERING, INC.
 LOUISIANA & MISSISSIPPI
 Chief Engineer: Brian Mistich, PE
 554 Old Spanish Trail
 Slidell, LA 70488
 www.dammonengineering.com
 info@dammonengineering.com
 PH: 985.649.5832

#	DESCRIPTION	REVISIONS	DATE



NEW FOOD DISTRIBUTION
 HEALTHY SCHOOL
 FOOD COLLABORATIVE
 62271 HWY 11
 PEARL RIVER, LOUISIANA 70452
 JOB No: 2445 | DATE: 06-22-2022
 DRAWN BY: CKD | CHECKED BY: K-J

SHEET TITLE:
 EXISTING SITE DRAINAGE PLAN
 DRAWING NUMBER:
C102
 SHEET No: 2 of 4