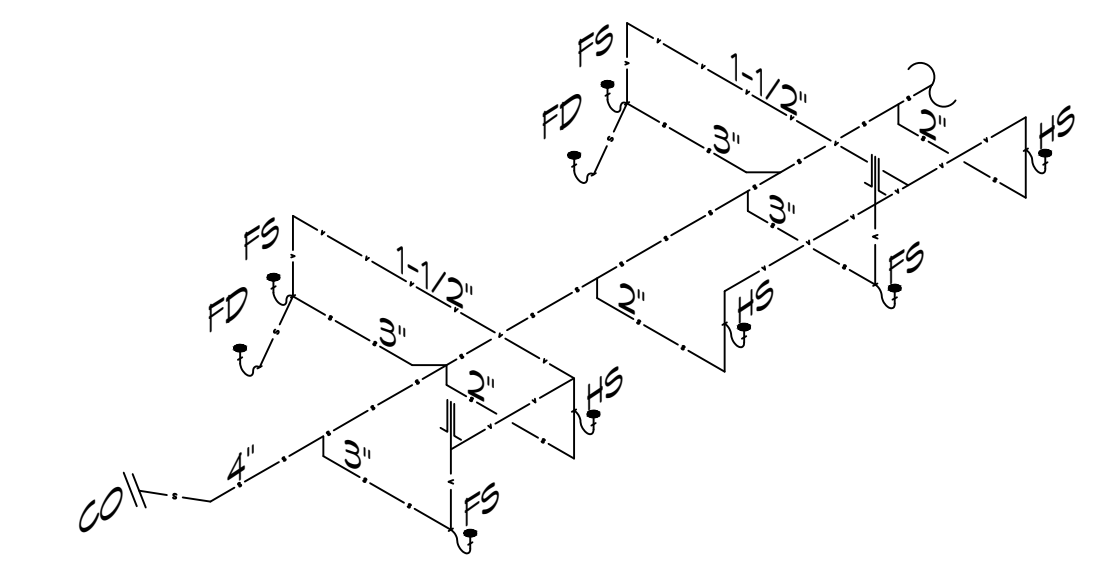
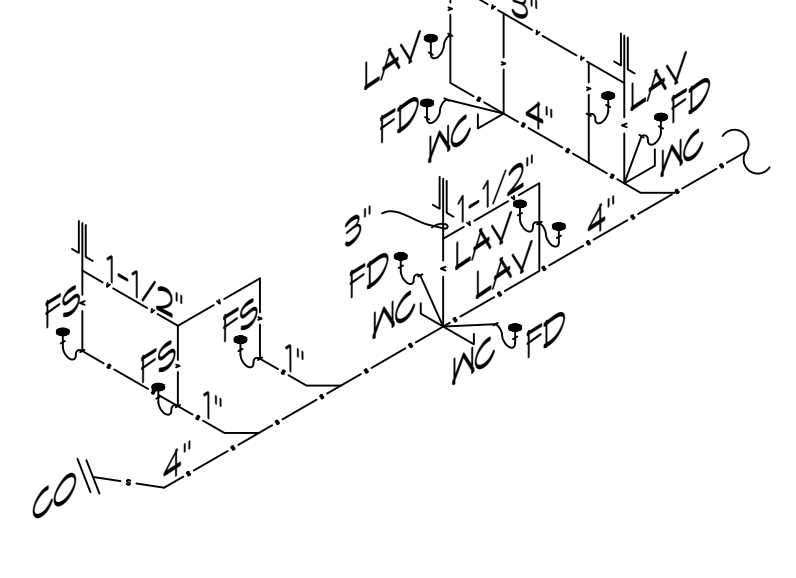


FILE NAME: A:\RESTAURANT\100 - The Restaurant\Sheet\Mechanical\M101 - Mechanical Plan.dwg PLOT DATE: 05/17/2022 2:54:04 PM



3 RISER DIAGRAM
SCALE: NTS
KITCHEN/BAR

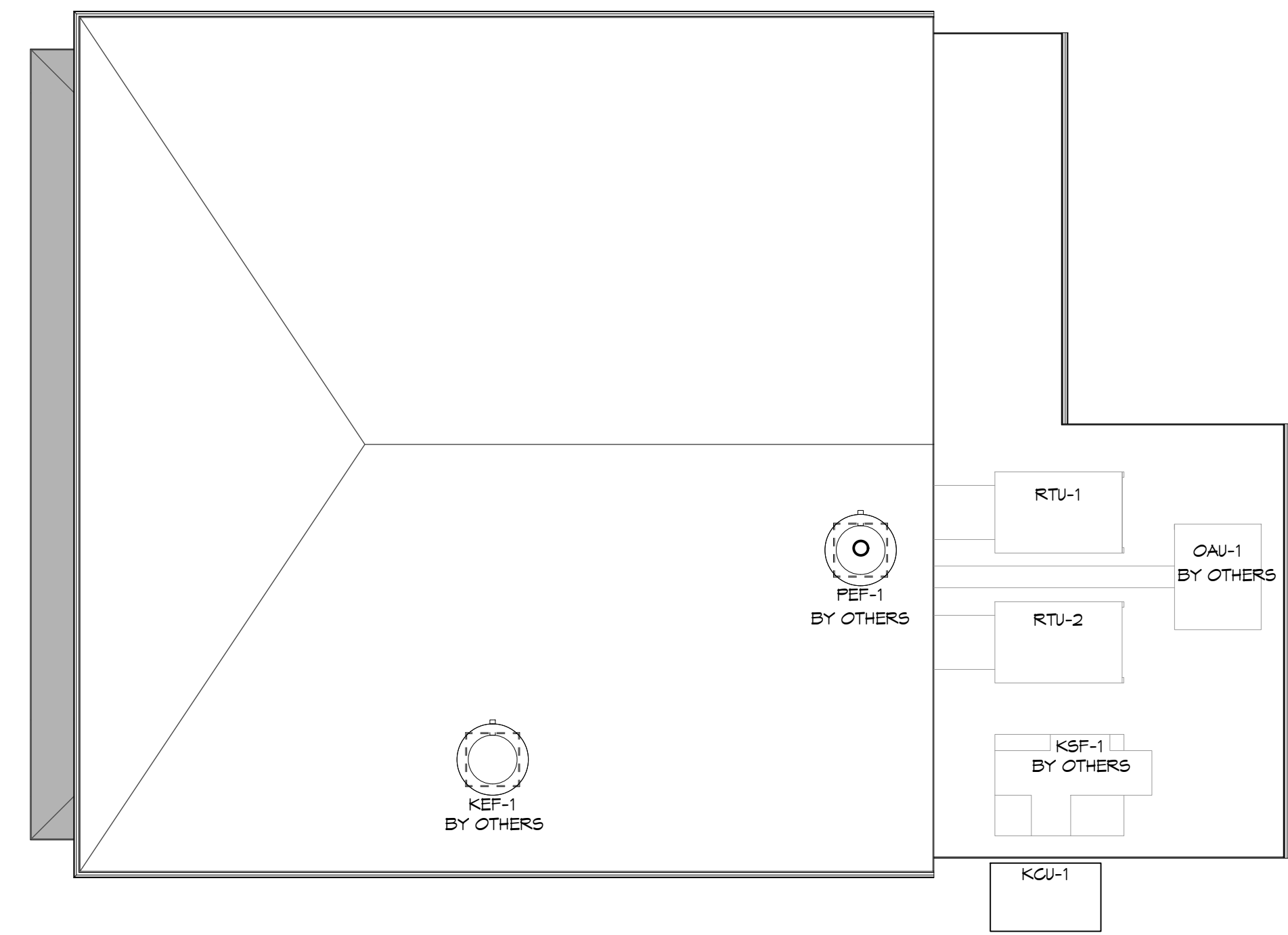


4 RISER DIAGRAM
SCALE: NTS
RESTROOMS

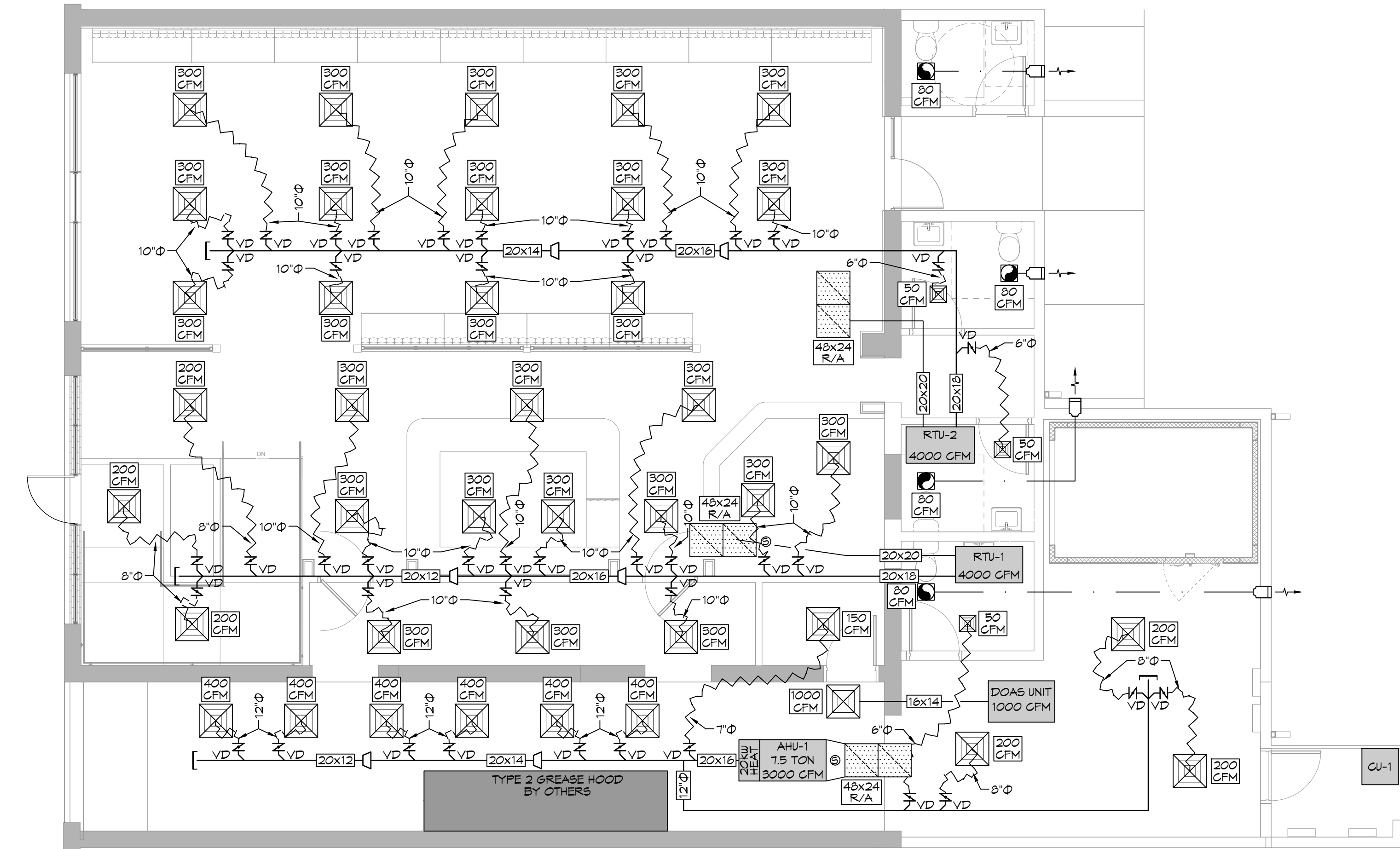
A/C SCHEDULE																		
TAG	NOMINAL TONS	TOTAL CFM	AIR HANDLER			HEAT PUMP			REMARKS									
			COOLING	Motor HP	ESP (1" WC)	HEAT	POWER	TAG		POWER								
AHU-1	7.5	3000	TMBH	SMBH	74.1	2	0.6	20	VAC	PH	MCA							
								208	3	59.6	CU-1	VAC	PH	MCA	208	3	39	1, 2, 3, 4

RTU SCHEDULE									
TAG	NOMINAL TONS	CFM	HEAT BTU KBTU/h	POWER			REMARKS		
				VAC	PH	MCA			
RTU #1	10	4,000	160	200	3	45			
RTU #2	10	4,000	160	200	3	45			

- ### GENERAL HVAC NOTES
- CONCEALED DUCTWORK TO BE GALVANIZED SHEET METAL WRAPPED WITH FIBROUS GLASS DUCT WRAP WITH FSK VAPOR BARRIER, MIN R-6. INSTALLED PER SMAGNA STANDARDS. DUCT WORK IMMEDIATELY DOWNSTREAM FROM RTU SHALL BE LINED FOR SOUND ATTENUATION.
 - EXPOSED DUCTWORK TO BE GALVANIZED SHEET METAL LINED WITH FIBROUS GLASS DUCT LINER, MIN R-6. INSTALLED PER SMAGNA STANDARDS.
 - ROUND FLEXIBLE DUCT TO BE UL-181, CLASS 1, AIR DUCT MATERIALS.
 - DUCT SIZES SHOWN ARE CLEAR INSIDE DIMENSIONS.
 - IN ALL SYSTEMS OVER 2000 CFM AND LESS THAN 15,000 CFM, SMOKE DETECTORS SHALL BE INSTALLED IN ACCORDANCE WITH NFPA 12E IN THE RETURN DUCT DOWNSTREAM OF THE AIR HANDLING UNIT AND ALL FILTERS TO AUTOMATICALLY STOP THE FAN.
 - PROVIDE UL LISTED 125°F FIRESTAT IN RETURN AIR OF EACH SYSTEM UNDER 2000 CFM TO SHUT DOWN THE FAN IN THE EVENT OF FIRE.
 - PROVIDE UL RATED FIRE DAMPERS WHERE REQUIRED AT ALL DUCT PENETRATIONS OF FIRE-RATED ASSEMBLIES AND WHERE REQUIRED BY CODE, INCLUDING OUTSIDE AIR INTAKES AND EXHAUST FANS.
 - CONDENSATE DRAINS TO BE PVC PIPE RUN TO PLUMBERS P-TRAP WITHIN FIVE FEET OF AIR HANDLING UNITS.
 - ALL AIR HANDLING SYSTEMS TO BE BALANCED TO ASSURE PROPER AIR FLOWS PER PLANS.
 - ALL THERMOSTATS TO BE AUTOMATIC CHANGEOVER WITH HEAT SWITCH.
 - EXHAUST FAN SHALL BE CONTROLLED BY A SWITCH ON THE WALL IN THE SAME LOCATION AS LIGHT SWITCH(S). PROVIDE BACK DRAFT DAMPER.
 - PROVIDE AND INSTALL WATER PROOF GRILLE VENT IN PROPER ROOF LOCATION FOR PLUMBING FIXTURE EXHAUST.
 - ALL SUPPLY AIR VENTS SHALL BE EQUIPPED WITH AIR CONTROL DAMPERS AT THE REGISTER.
 - LOCATE OUTDOOR UNITS AS SHOWN ON ARCHITECTURAL DRAWINGS.
 - REFRIGERANT LINES SHALL BE SIZED BY UNIT MANUFACTURER AND INSTALLED ACCORDING TO MANUFACTURER'S INSTRUCTIONS.
 - FRESH AIR SHALL BE SUPPLIED TO EACH AIR HANDLER THROUGH EXTERIOR WALL DUCT SUPPLIED WITH A CONTROL DAMPER.
 - ALL ELECTRICAL, MECHANICAL, AND PLUMBING PENETRATING FIRE WALLS SHALL BE FIRE CAULKED. (PENETRATIONS THROUGH RATED CONSTRUCTION SHALL BE SEALED WITH A MATERIAL CAPABLE OF PREVENTING THE PASSAGE OF FLAMES AND HOT GASES WHEN TESTED IN ACCORDANCE WITH ASTM-E8-14).
 - ALL MECHANICAL SYMBOLS ARE DRAWN DIAGRAMMATICALLY. CONTRACTOR TO VERIFY WITH OWNER LOCATIONS OF VENTS, DAMPERS, REGISTERS, ETC.
 - FLEXIBLE DUCTWORK LENGTH NOT TO EXCEED 12'-0". SUPPORT FLEX DUCT TO PREVENT SAGGING.
 - REFER TO REFLECTED CEILING PLAN FOR FINAL GRILLE AND DIFFUSER LOCATIONS AND COORDINATE AS REQUIRED.
 - FINAL LOCATION OF TEMPERATURE CONTROLS TO BE COORDINATED WITH OWNER AT JOB SITE.
 - PROVIDE AND INSTALL SMOKE DETECTORS AS APPROVED BY LOCAL AHJ'S. PLACE NEAR R/A AND S/A OPENINGS OF AHU AND PROVIDE, WITH ACCESS PANEL, WIRING BY ELECTRICAL CONTRACTOR.
 - FRESH AIR INTAKES ARE REQUIRED TO HAVE MOTORIZED OR GRAVITY DAMPERS TO SHUT OFF WHEN SYSTEM IS NOT RUNNING.
 - PROVIDE BIRD SCREENS AT ALL EXTERIOR MECHANICAL PENETRATIONS.
 - COORDINATE WALL MOUNTED THERMOSTAT LOCATIONS WITH ALL OWNER FURNISHED ITEMS EITHER WALL MOUNTED OR FLOOR MOUNTED AGAINST PARTITIONS. REFER TO ARCHITECTURAL DRAWINGS.
 - SEE ROOF PLAN FOR ALL ROOF PENETRATIONS.
 - PROVIDE MIN 18 GA GALVANIZED SHEET METAL TO BLANK-OFF GABLE VENTS WHERE INTAKE/EXHAUST DUCTS OCCUR.



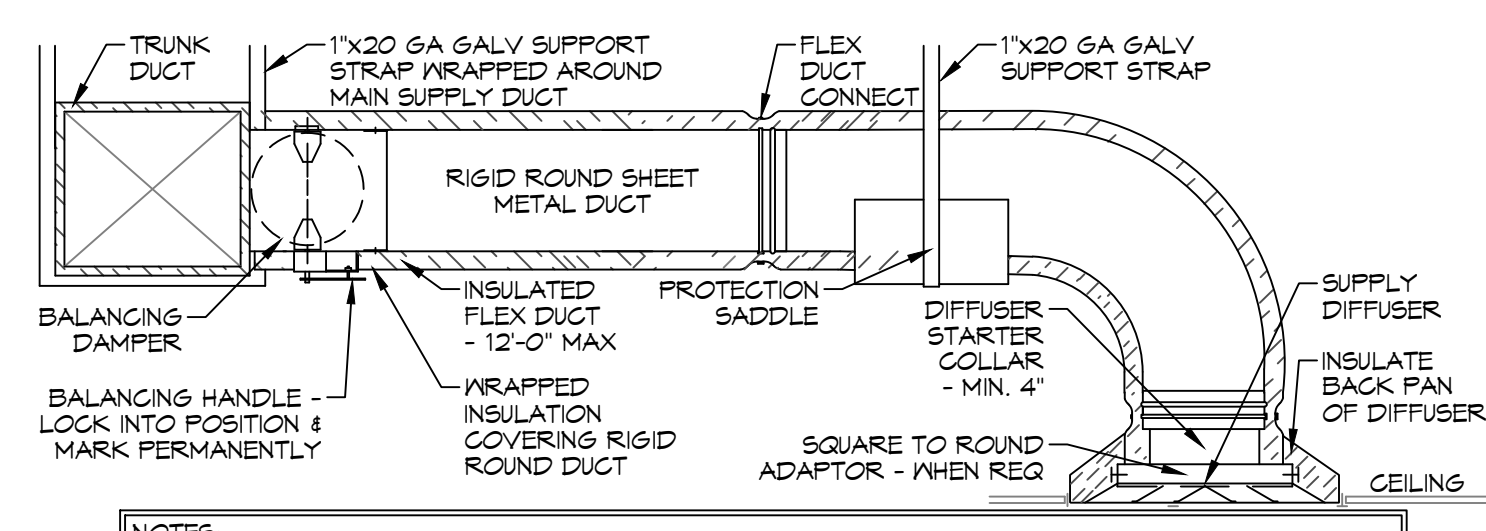
1 ROOF MECHANICAL PLAN
SCALE: 1/8"=1'-0"



2 MECHANICAL PLAN
SCALE: 3/16"=1'-0"

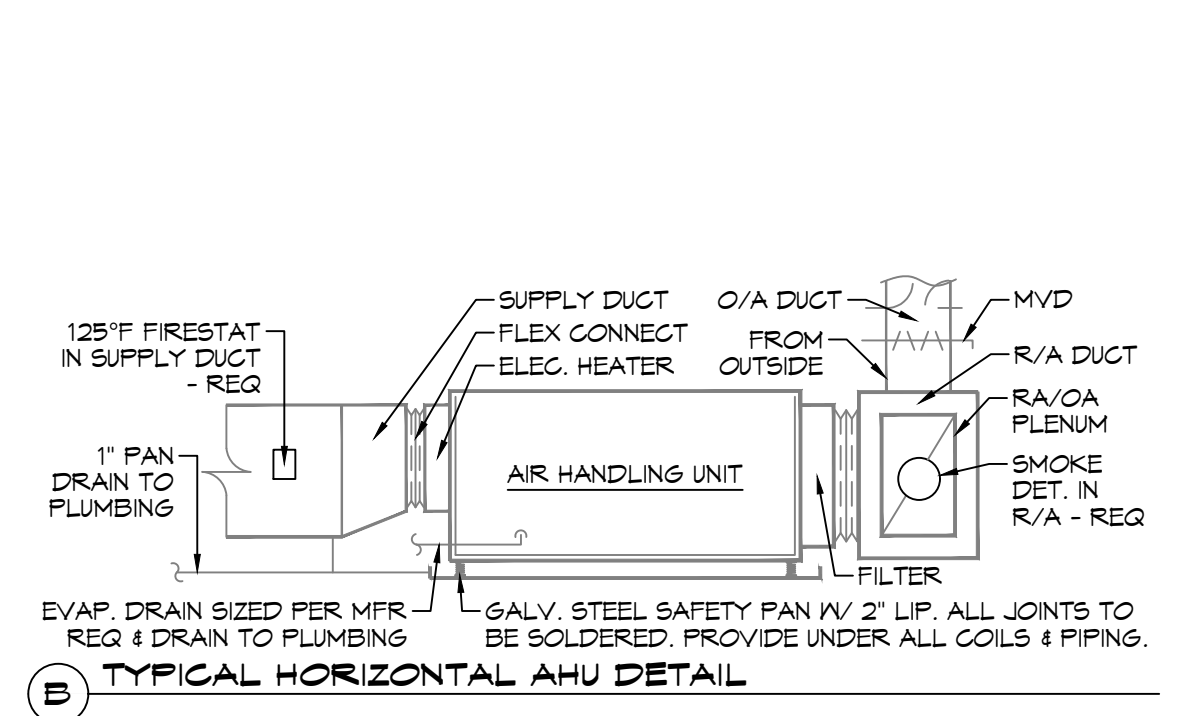
MECHANICAL LEGEND

	SUPPLY AIR GRILLE		SUPPLY DUCT
	RETURN AIR GRILLE		RETURN AIR DUCT
	SMOKE DETECTOR		EXHAUST DUCT
	DAMPER CONTROL		ROUND FLEX DUCT, MAX. LENGTH 12'-0", MIN. R-6. DUCT SIZE AS FOLLOWS: 250 CFM TO 350 CFM = 9" 200 CFM TO 250 CFM = 8" 150 CFM TO 200 CFM = 7" 100 CFM TO 150 CFM = 6"
	EXHAUST FAN		

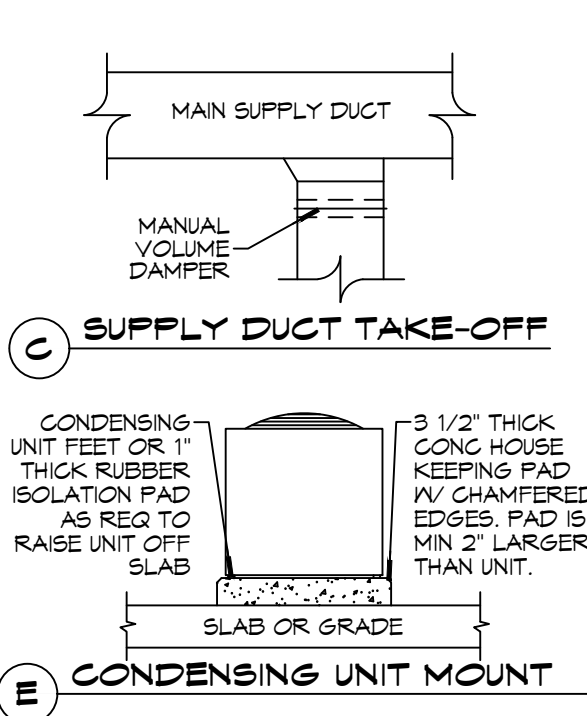


- NOTES:**
- PROVIDE 6" FLEX DUCT CONNECTION "PANUIT" DRAP BAND ON INTERIOR OF FLEX DUCT HELIX.
 - PROVIDE MIN 4" COLLARS FOR ATTACHING FLEX DUCT TO ROUND DUCT, DAMPERS, & DIFFUSERS.
 - BAND RIGID ROUND DUCT INSULATION TO DUCT & PROVIDE TAPE FOR INSULATION OVERLAP.

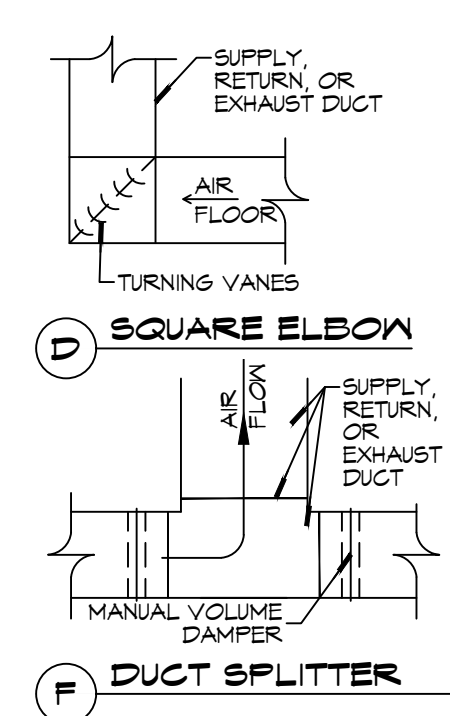
5 DETAILS
SCALE: N.T.S.



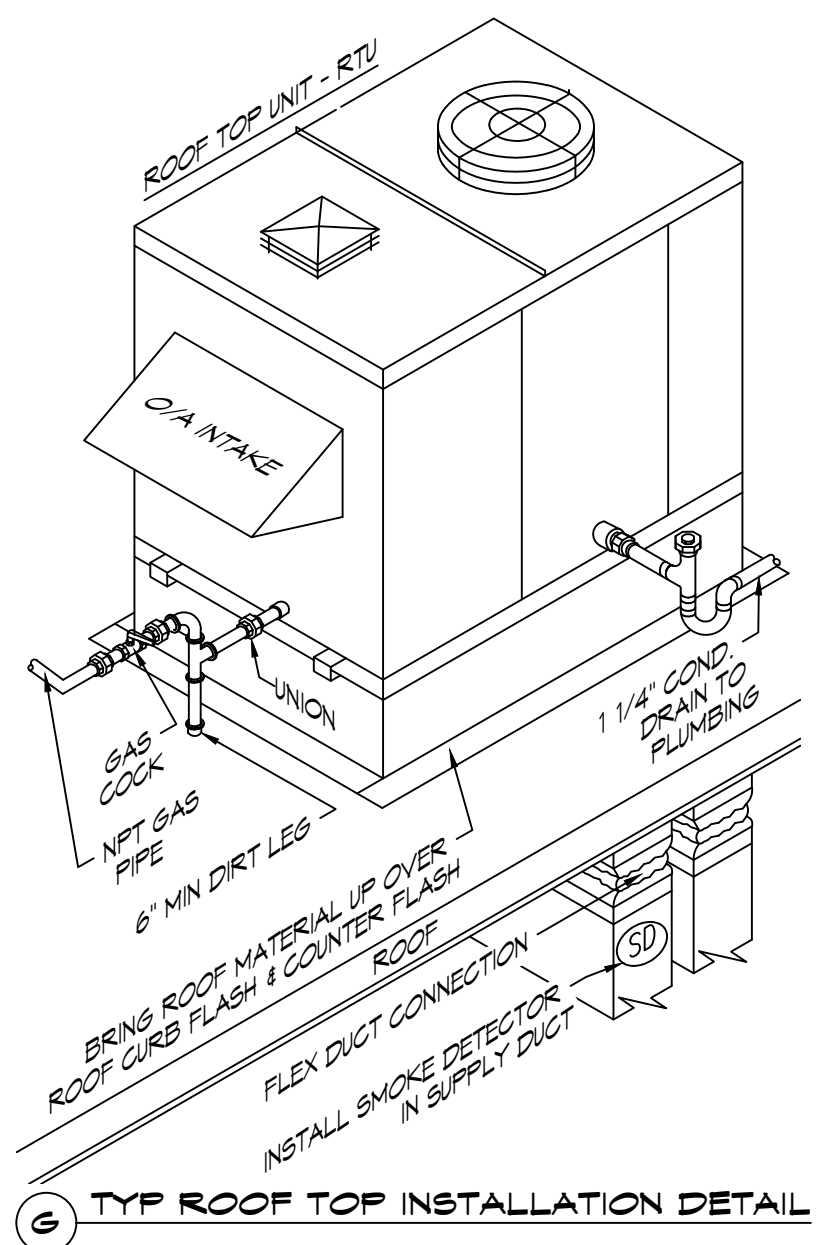
B TYPICAL HORIZONTAL AHU DETAIL



C SUPPLY DUCT TAKE-OFF



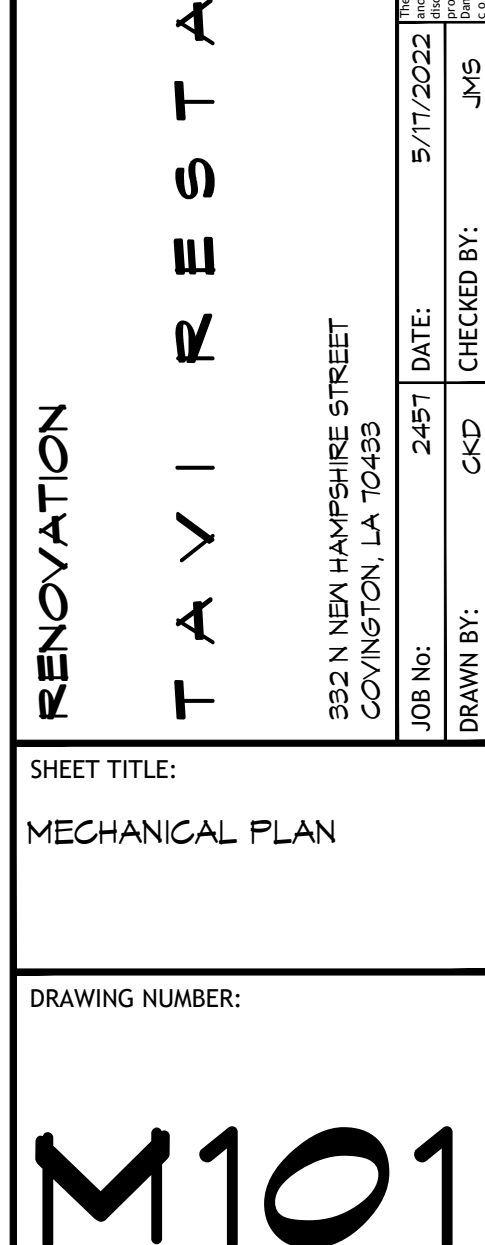
D SQUARE ELBOW



E CONDENSING UNIT MOUNT



F DUCT SPLITTER



G TYP ROOF TOP INSTALLATION DETAIL

DAMMON ENGINEERING, INC.
 LOUISIANA & MISSISSIPPI
 Chief Engineer: Brian Missetch, PE
 554 Old Spanish Trail
 Slidell, LA 70458
 www.dammonengineering.com
 info@dammonengineering.com
 PH: 985-649-5832

#	DESCRIPTION	DATE



RENOVATION
TAYI RESTAURANT
 932 N NEW HAMPSHIRE STREET
 COVINGTON, LA 70429
 JOB No: 2487
 DATE: 5/17/2022
 DRAWN BY: JMS
 CHECKED BY: CKD
 SHEET TITLE:
MECHANICAL PLAN
 DRAWING NUMBER:
M101
 SHEET No: _____ of # _____