

## LIFE-SAFETY INFORMATION

<b>APPLICABLE CODES</b>		
NFPA 101 LIFE-SAFETY CODE 2015		
OCCUPANCY A-2, ASSEMBLY USES INTENDED FOR FOOD AND DRINK CONSUMPTION (RESTAURANTS); CONSTRUCTION TYPE V B ASSEMBLY (CHAPTER 13)		
MIXED OCCUPANCY (REFERENCE CHAPTER 6)		
<b>OCCUPANT LOAD FACTOR</b> (REFERENCE TABLE 7.3.1.2)		
DINING	449 S.F. NET	ASSEMBLY WITHOUT FIXED SEATS - UNCONCENTRATED (TABLES AND CHAIRS) - 15 NET PER OCCUPANT = 30 OCCUPANTS
KITCHEN	321 S.F. GROSS	100 S.F. / PERSON = 4 OCCUPANTS
SERVING AREA	316 S.F.	100 S.F. / PERSON = 4 OCCUPANTS
<b>TOTAL OCCUPANTS = 38</b>		
<b>CLASSIFICATION OF HAZARD OF CONTENTS</b>		
REFERENCE: OCCUPANCY CHAPTER AND 6.2.2: SPECIFY LOW, ORDINARY, OR HIGH		
<b>CONSTRUCTION TYPE(S)</b> (REFERENCE: CHAPTERS, TABLE A.8.2.1.2 AND COMMENTARY TABLE B.1 IN HANDBOOK)		
CONST. TYPE= 5(000)		
<b>MINIMUM EXIT SEPARATION DISTANCE FOR REMOTELY LOCATED EXITS</b>		
REFERENCE: SECTION 7.5, SPECIFY 1/2 OR 1/3 DIAGONAL DISTANCE OF AREA SERVED		
1/2 DIAGONAL DINING =	83.75 FT / 2 =	41.88 FT
DIAGONAL KITCHEN =	65.5 FT / 2 =	32.75 FT
<b>MAXIMUM DEAD-END CORRIDORS</b> (REFERENCE: OCCUPANCY CHAPTER AND TABLE A.7.6)		
<b>MAXIMUM COMMON PATH OF TRAVEL DISTANCE</b> (REFERENCE: OCCUPANCY CHAPTER AND TABLE A.7.6)		
<b>MAXIMUM TRAVEL DISTANCE TO EXITS</b> (REFERENCE: OCCUPANCY CHAPTER AND TABLE A.7.6)		
MAIN ENTRANCE MUST BE SIGNED TO ACCOMMODATE 1/2 OCCUPANT LOAD OF BUILDING		
<b>EXTINGUISHMENT REQUIREMENTS</b> SPRINKLER (NOT REQUIRED)		
<b>DETECTION, ALARM, AND COMMUNICATION SYSTEMS</b> NO		
<b>ALLOWABLE HEIGHT AND BUILDING AREA</b> PER IBC EQUIVALENT CONSTRUCTION TYPE		

## BUILDING CODE INFORMATION

<b>APPLICABLE CODES</b>		
IBC 2015		
OCCUPANCY A-2, ASSEMBLY USES INTENDED FOR FOOD AND DRINK CONSUMPTION (RESTAURANTS) (IBC 2015 CHAPTER 10)		
<b>OCCUPANT LOAD CALCULATIONS</b> (TABLE 1004.1.2)		
ASSEMBLY - UN-CONCENTRATED (TABLES AND CHAIRS)	449 S.F. NET	15 NET / OCCUPANT = 30 OCCUPANTS
KITCHEN	321 S.F. GROSS	100 S.F. GROSS / OCCUPANT = 4 OCCUPANTS
SERVING AREA	316 S.F. GROSS	100 S.F. GROSS / OCCUPANT = 4 OCCUPANTS
<b>TOTAL OCCUPANTS = 38</b>		
<b>CONSTRUCTION TYPE(S)</b> (TABLE 503)		
V B (SECTION 503)		
<b>ALLOWABLE HEIGHT AND BUILDING AREA LIMITED BY TYPE OF CONSTRUCTION</b>		
MAXIMUM HEIGHT IN FEET (SECTION 503 & 504, TABLE 503)	40	
MAXIMUM AREA IN SQUARE FEET (SECTION 503, 506 & 507, TABLE 503)	MULTI STORY NON-SPRINKLED	6,000 S.F.
ALLOWABLE BUILDING AREA WITH FRONTAGE INCREASE	8,160 S.F.	

## WIND SPEED DESIGN REQUIREMENTS

IMPROVEMENTS TO THIS BUILDING SHALL BE DESIGNED WITH IBC SEC 1609 AS A FULLY ENCLOSED BLDG USING THE FOLLOWING INFORMATION:

WIND DESIGN DATA:

DETERMINATION OF WIND LOADS SHALL BE IN ACCORDANCE WITH IBC SEC 1609.3 (A), (B), OR (C) DEPENDING ON THE RISK CATEGORY			
ULTIMATE WIND SPEED =	142 MPH (IBC FIG 1609C)	NOMINAL WIND SPEED =	V <sub>wind</sub> = 110 MPH
RISK FACTOR:	CATEGORY 2	SURFACE ROUGHNESS =	C
TOPOGRAPHIC FACTOR =	1	EXPOSURE =	C
INTERNAL PRESSURE COEFFICIENT (ASCE 7-10 TABLE 26.11-1):	± 0.18		
<b>LIVE LOADS (IBC SEC 1607)</b>			
DINING ROOMS AND RESTAURANTS (IBC TABLE 1607.1):	100 PSF		
ASSEMBLY PLATFORMS (IBC TABLE 1607.1):	100 PSF		
ROOF LIVE LOADS (IBC TABLE 1607.1):	20 PSF UNIFORM, 300 LB CONCENTRATED		
SNOW LOADS (IBC TABLE 1608):			
GROUND SNOW LOAD (IBC FIG 1608.2):	5 PSF		

## FLOOD ZONE INFORMATION

BASED ON THE LSU AGRICULTURE FLOOD MAP THIS PROPERTY IS IN A FLOOD ZONE

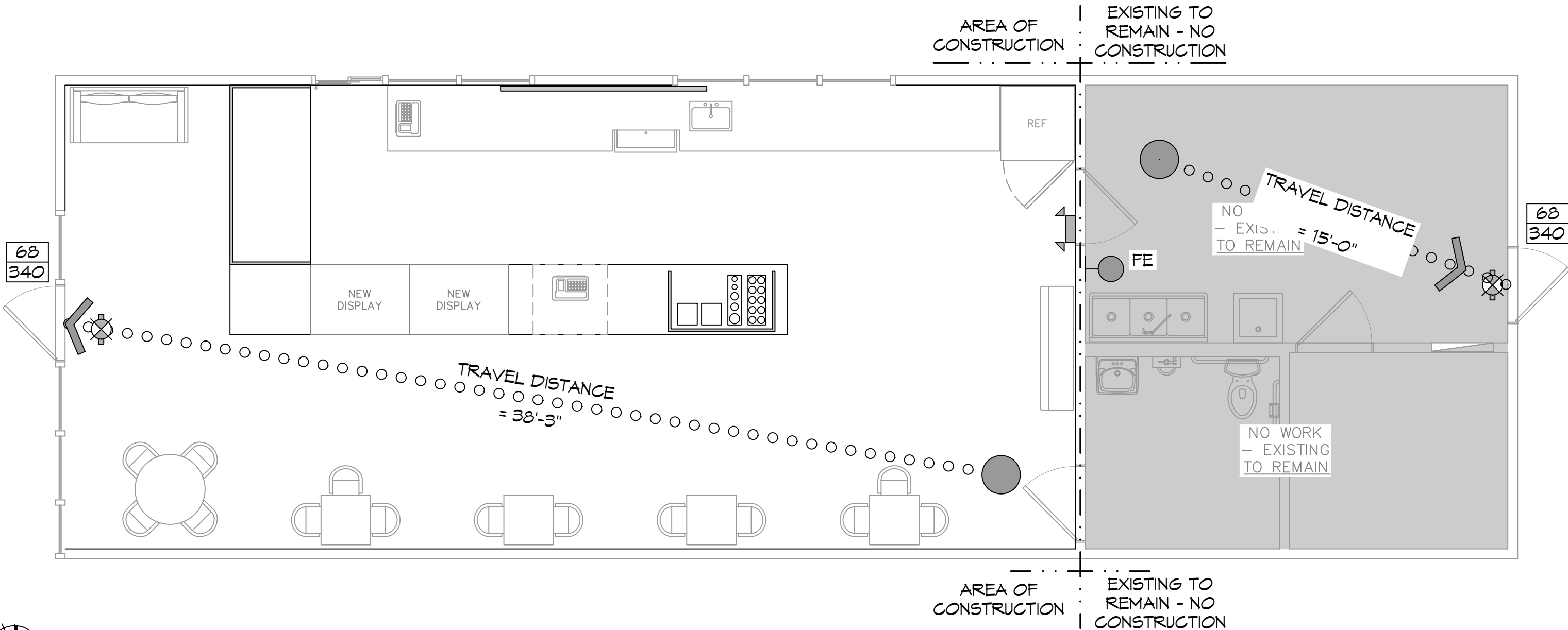
FIRM, COMMUNITY NO. 22103C0519F DATE: 04/30/2008

FLOOD ZONE: AE      BASE FLOOD ELEVATION: NSVD 13

ELEVATIONS REFER TO NSVD 1929 DATUM

## LIFE-SAFETY LEGEND

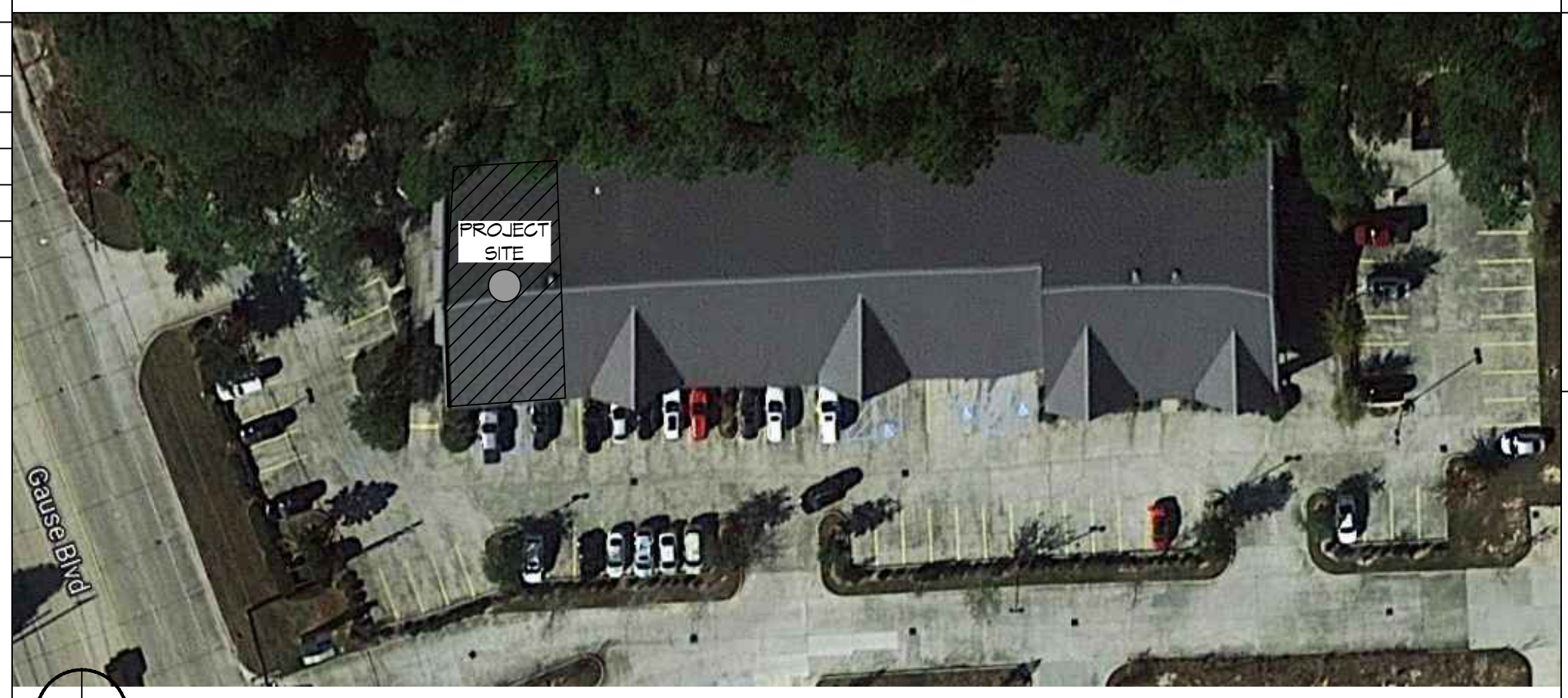
SYMBOL	DESCRIPTION
➤	EXITS
(45)	DOOR FIRE RATINGS (MINUTES)
(36) (170)	DOOR WIDTH/EGRESS CAPACITY
☒	EXIT LIGHT
● FE	FIRE EXTINGUISHER W/ WALL MTD BRACKET
-----	COMMON PATH OF TRAVEL
o o o o o o o o o o	TRAVEL DISTANCE
●	DECISION POINT



## LIFE-SAFETY PLAN

SCALE: 1/4" = 1'-0"

## VICINITY MAP



## SHEET INDEX

SHEET #	SHEET TITLE
G101	COVER PAGE
C101	EXISTING SITE PLAN
A101	FLOOR PLAN
A102	REFLECTED CEILING PLAN
A103	INTERIOR ELEVATION PLAN
M104	MILLWORK DETAILS
M101	MECHANICAL PLAN
E101	ELECTRICAL POWER & LIGHTING PLAN

## GENERAL NOTES

1. ALL MATERIALS AND WORK, INCIDENTAL TO THE CONSTRUCTION OF THIS PROJECT, SHALL CONFORM TO ALL GOVERNING CODES, AND REGULATIONS OF AGENCIES IN AUTHORITY.
2. CONTRACTOR SHALL PROVIDE ALL PUBLIC PROTECTIONS NECESSARY AS REQUIRED BY LAW.
3. THE DRAWINGS AND ANY SUBSEQUENTLY ISSUED ADDENDA, AMENDMENTS OR SUCH CHANGE ORDERS APPROVED BY THE OWNER AND THE CONTRACTOR ARE PART OF THESE CONTRACT DOCUMENTS.
4. **DO NOT SCALE DRAWINGS.** CONSULT WITH THE ENGINEER REGARDING ANY ITEMS IN THE CONTRACT DOCUMENTS THAT REQUIRE CLARIFICATION.
6. TRASH SHALL BE REMOVED FROM THE SITE NOT LESS THAN TWICE MONTHLY.
7. THE GENERAL CONTRACTOR SHALL VERIFY EXISTING CONDITIONS PRIOR TO COMMENCING WORK AND REPORT ANY AND ALL DISCREPANCIES TO THE ARCHITECT.
8. CONTRACTOR VEHICLES AND EQUIPMENT NECESSARY FOR CONSTRUCTION MAY BE PARKED ON THE SITE. OTHER VEHICLES PARKED ON THE SITE REQUIRE THE OWNER'S PERMISSION.
9. ALL MATERIALS/EQUIPMENT SHALL BE INSTALLED PER MANUFACTURER'S RECOMMENDATIONS. WORK NOT CONSISTENT WITH MANUFACTURER'S RECOMMENDATIONS WILL BE REJECTED.

# DAMMON

**ENGINEERING, INC.**

LOUISIANA & MISSISSIPPI

Chief Engineer: Brian Mistich, PE  
554 Old Spanish Trail  
Slidell, LA 70068  
www.dammonengineering.com  
info@dammonengineering.com  
PH: 985.649.5832

#	DESCRIPTION	DATE

SEAL:

DENTAL OFFICE

P J S COFFEE

2040 GAUSE BLVD.  
SLIDELL, LA 70461

JOB NO: 2461    DATE: 10-19-2022    DRAWN BY: CKD    CHECKED BY: JMS

GENERAL INFORMATION SHEET

DRAWING NUMBER:

# G101

SHEET No: 1 of 2