

GENERAL LIGHTING NOTES

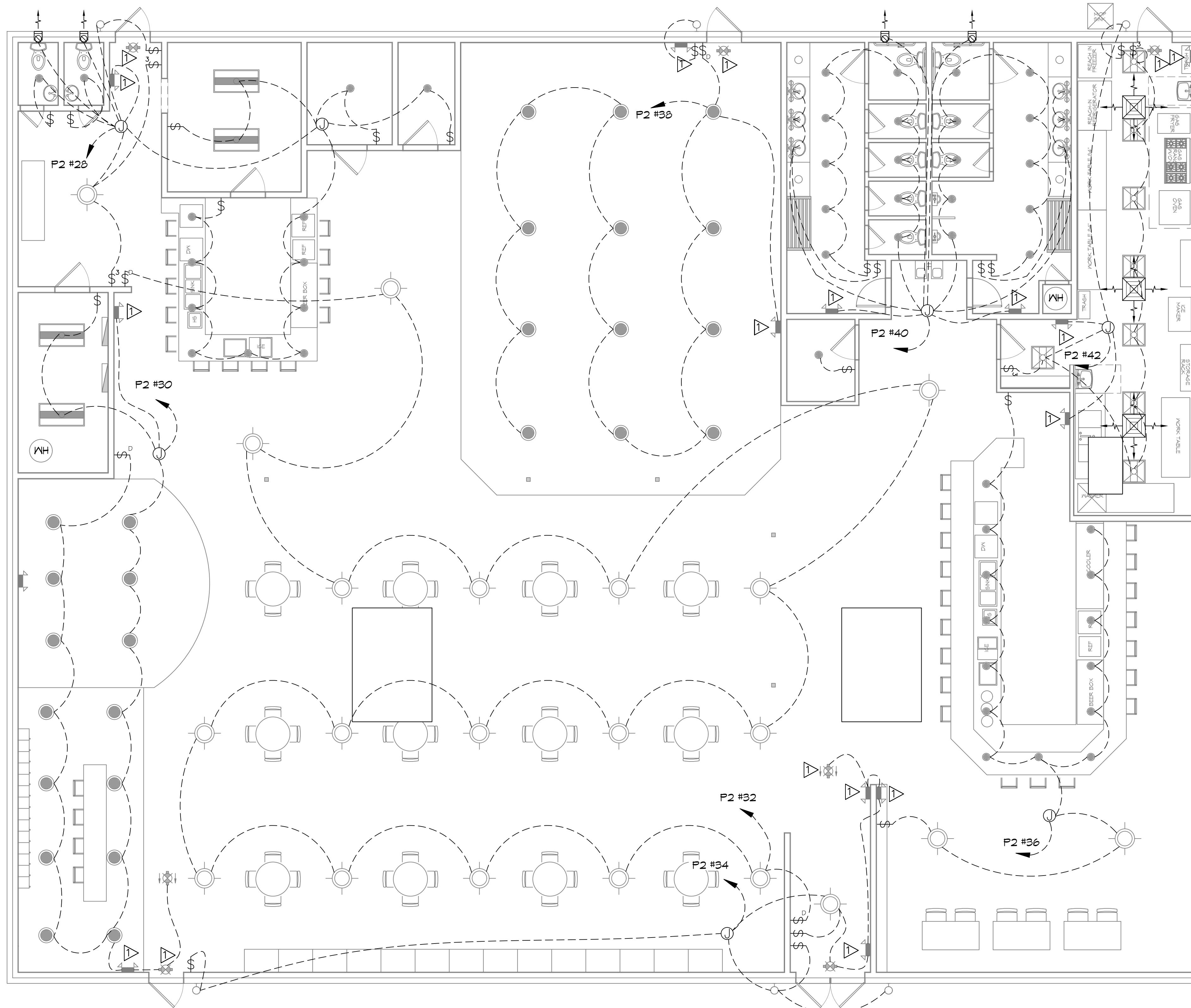
1. ALL WORK SHALL COMPLY WITH APPLICABLE NATIONAL, STATE, AND LOCAL CODES, RULES, REGULATIONS, AND REQUIREMENTS OF THE SERVICE UTILITY COMPANY.
2. GENERAL CONTRACTOR SHALL NOTIFY THE ARCHITECT IMMEDIATELY IF ANY CONFLICTS OCCUR BETWEEN LIGHTING AND ANY OTHER TRADE. DO NOT PROCEED WITH INSTALLATION IN THAT AREA UNTIL CONFLICT HAS BEEN RESOLVED TO THE SATISFACTION OF THE ARCHITECT AND ENGINEER.
3. REFER TO ARCHITECTURAL DRAWINGS FOR EXACT LOCATION AND MOUNTING INSTRUCTIONS FOR ALL LIGHT FIXTURES. NOTIFY THE ARCHITECT AND ENGINEER OF ANY DISCREPANCIES BETWEEN THESE PLANS AND THE ARCHITECTURAL PLANS RELATING TO QUANTITY, TYPE AND LOCATION OF DEVICES AND/OR FIXTURES.
4. WHEN SPECIFIC LIGHT FIXTURE HAS BEEN SPECIFIED IN THE FIXTURE SCHEDULE, ELECTRICAL CONTRACTOR SHALL PROVIDE COMPLETE ASSEMBLY INCLUSIVE ALL PARTS AND HARDWARE TO INSURE PROPER FUNCTIONING FIXTURE.
5. ALL CONDUCTORS SHALL BE A MINIMUM OF #12 AWG UNLESS NOTED OTHERWISE.
6. ALL 120V RUNS LONGER THAN 60 FEET SHALL BE #10 AWG AND 277V RUNS LONGER THAN 150 FEET SHALL BE #10 AWG UNLESS NOTED OTHERWISE.
7. ALL CONDUCTORS SHALL BE COPPER.
8. WHERE CONDUCTOR SIZES ARE NOTED ON DRAWINGS, THAT WIRE SIZE SHALL BE THROUGH THE ENTIRE RUN UNLESS OTHERWISE NOTED.
9. MOUNTED LIGHT SWITCHES 48" AFF UNLESS NOTED OTHERWISE ON ARCHITECTURAL DRAWINGS.
10. WHERE MORE THAN ONE SWITCH OCCURS IN THE SAME LOCATION, THEY SHALL BE INSTALLED IN A GANG TYPE BOX UNDER ONE COVER PLATE. ALL GANGED SWITCHES SHALL HAVE A COMMON SEAMLESS FACEPLATE. EACH MULTI-GANGED BOX SHALL BE NO MORE THAN SIX (6) SWITCHES WIDE. WHERE MORE THAN SIX (6) SWITCHES ARE SHOWN AT ONE (1) LOCATION, ADDITIONAL MULTI-GANGED BOXES SHALL BE STACKED VERTICALLY AND THE WIDTH OF THE MULTI-GANGED SHALL BE AS EVEN AS POSSIBLE.
11. EACH DIMMER SWITCH SHALL HAVE A WATTAGE RATING 25% HIGHER THAN THE TOTAL WATTAGE OF ALL LIGHTS TO BE CONTROLLED BY THE DIMMER. DIMMER SIZES 600, 1000, 1500, AND 2000 WATTS. LUTRON NOVA T-STAR. WHERE SWITCHES ARE GANGED WITH DIMMERS, THE SWITCHES SHALL ALSO BE LUTRON NOVA T-STAR. FLUORESCENT AND LOW VOLTAGE DIMMERS SHALL BE LUTRON NOVA T-STAR.
12. WHERE FLUORESCENT FIXTURES ARE SHOWN TO BE DIMMED, THE FIXTURES SHALL HAVE DIMMING TYPE BALLASTS WHICH ARE COMPATIBLE WITH THE SPECIFIED DIMMERS.
13. WHERE LED FIXTURES/LAMPS ARE SHOWN TO BE DIMMED, THE DIMMER SHALL BE COMPATIBLE WITH THE FIXTURE/LAMP SPECIFIED OR PROVIDED.
14. ALL EMERGENCY EXIT LIGHT FIXTURES SHALL HAVE 90 MINUTE BATTERY BACKUP WITH INTEGRAL TEST BUTTON AND SHALL BURN CONTINUOUSLY.
15. ALL FLUORESCENT FIXTURES THAT UTILIZE DOUBLE-ENDED LAMPS AND CONTAIN BALLASTS SHALL BE PROVIDED WITH A DISCONNECTING MEANS IN ACCORDANCE WITH NEC 410.135.

LIGHTING LEGEND

- | | |
|---|--|
| <ul style="list-style-type: none"> SUSPENDED LIGHT FIXTURE (16' AFF) RECESSED LIGHT FIXTURE (8' AFF) EXTERIOR LIGHT FIXTURE ON SENSOR VANITY LIGHT EMERGENCY LIGHT FIXTURE - WALL MOUNTED (8' A.F.F.) | <ul style="list-style-type: none"> JUNCTION BOX SINGLE POLE SWITCH LIGHT SWITCH (8' AFF) 3-WAY LIGHT SWITCH (8' AFF) EXHAUST FAN - SEE MECHANICAL EXIT LIGHT FIXTURE - ABOVE DOOR HOME RUN |
|---|--|

KEYED NOTES

- PROVIDE CONNECTION TO UN-SWITCHED HOT OF LIGHTING CIRCUIT AND SHALL HAVE 90 MINUTE EMERGENCY BATTERY BACKUP.
- PROVIDE AND INSTALL LIGHTING CONTRACTOR LC WITH PHOTOCELL FOR OUTSIDE LIGHTS.
- PROVIDE AND INSTALL 3 POSITION ON-OFF-AUTO SWITCH AND WIRE TO LIGHTING CONTRACTOR PER MANUFACTURER'S INSTRUCTIONS. LABEL SWITCH 'LIGHTING CONTRACTOR OVERRIDE'
- 3-WAY LIGHT SWITCHES ARE TO BE WIRED TO CONTROL WAREHOUSE LIGHTS, CIRCUITS 25, 21, AND 24 RESPECTIVELY.
- INDICATES MEZZANINE
- 1 HR. RATED WALL



23 LIGHTING PLAN
SCALE: 3/16"=1'-0"

16' A.F.F.

DAMMON

ENGINEERING, INC.

LOUISIANA & MISSISSIPPI

www.dammonengineering.com
 info@dammon.com
 Phone: 985.649.5832

#	DESCRIPTION	DATE

#	DESCRIPTION	DATE

NEW LOUNGE RESTAURANT

THE BLAKK LOUNGE RESTAURANT AND BAR

2804 OLD SPANISH TRAIL,
 SUITE 100, SLIDELL, LA 70461
 JOB No: 2464 DATE: 03/02/2023
 DRAWN BY: C&D CHECKED BY: BAY

SHEET TITLE:
LIGHTING PLAN

DRAWING NUMBER:
E102