

XBEW Type 1, Baffle Filter Single Wall - Exhaust Only Wall Canopy

Model	Hood Length (in.)	Width (in.)	Bottom Width (in.)	Height (in.)		Exhaust Volume (CFM)	Exhaust SP (in. w.g.)	Double Island
				Front	Back			
XBEW	120	54	0	12	24	2400	0.423	No

Selected Options & Accessories:

Option or Accessory	Description
Mounting Height	80 in. off Finished Floor.
Insulated Top	Listed for Zero Clearance to Combustibles.
Integral Air Space	Factory Mounted on Back - 3" wide 30 lbs
Filter Type	Stainless Steel Baffle Filters 34 lbs
Backsplash Panel	68 in High 120 in Long 0 in Wide 85 lbs

Material: 430 SS Where Exposed
UL Listing: UL 710 w/out Exhaust Fire Damper

Features:
 Performance Enhancing Lip (PEL)
 Standing Seam Construction for Superior Strength
 Stainless Steel Finish for Higher Corrosion Resistance

Hood End Conditions:
 Back Wall - Limited Combustible

Section Data:

Length (in.)	Volume (CFM)	Exhaust Rate (CFM/FT)	SP (in. wg)	Filter Qty		Filter Ht. (in.)	Cooking Load	Light Qty	Light Type	Foot Candles	Drain Location	Hanging Weight (LBS)
				16" W	20" W							
120	2400	240	0.423	0	6	20	Heavy	6	Incandescent / CFL	57.58	Left/Right	378.77

Exhaust Collar Data:

Collar Num.	Collar Size (LxW) in. or Diameter (in.)	Pos. Off Left (in.)	Pos Off Back (in.)	Velocity (fpm)	Mounting Option
1	23 x 10	60	7	1503	Shipped Loose Exhaust Collar(s)

External Supply Plenum Data:

Supply: 1920 CFM

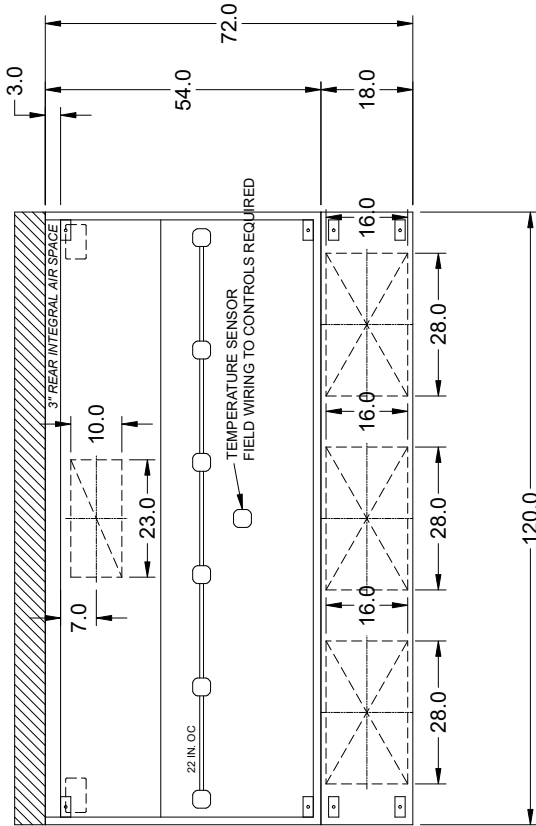
MUA: 1920 CFM

AC: 0 CFM

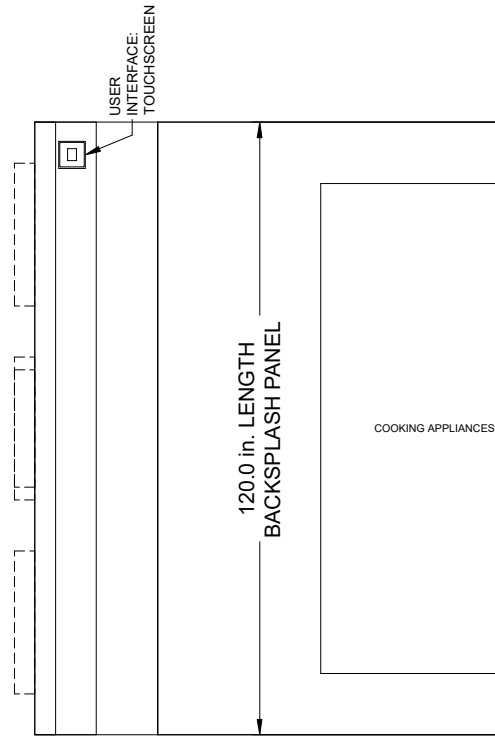
Plenum Num.	Side	Type	Length (in.)	Width (in.)	Height (in.)	Volume (CFM)	Weight (lbs)	SP (in. wg)	Insulated	MBD	LED Lights
1	Front	Air Curtain Supply (ASP)	120	18	4	1920	77	0.01	No	Yes	No

External Supply Collar Data:

Section Num.	Plenum Num.	Side	Collar Num.	Collar Shape	Collar Size (LxW) in. or Diameter (in.)	Pos. Off Left (in.)	Pos. Off Front (in.)	Velocity (fpm)	Mounting Option
1	1	Front	1	rectangular	28 x 16	22	9	206	Shipped Loose Supply Collar(s)
1	1	Front	2	rectangular	28 x 16	60	9	206	Shipped Loose Supply Collar(s)
1	1	Front	3	rectangular	28 x 16	98	9	206	Shipped Loose Supply Collar(s)



MARK: Kh-1 - SECTION 1
 PLAN VIEW



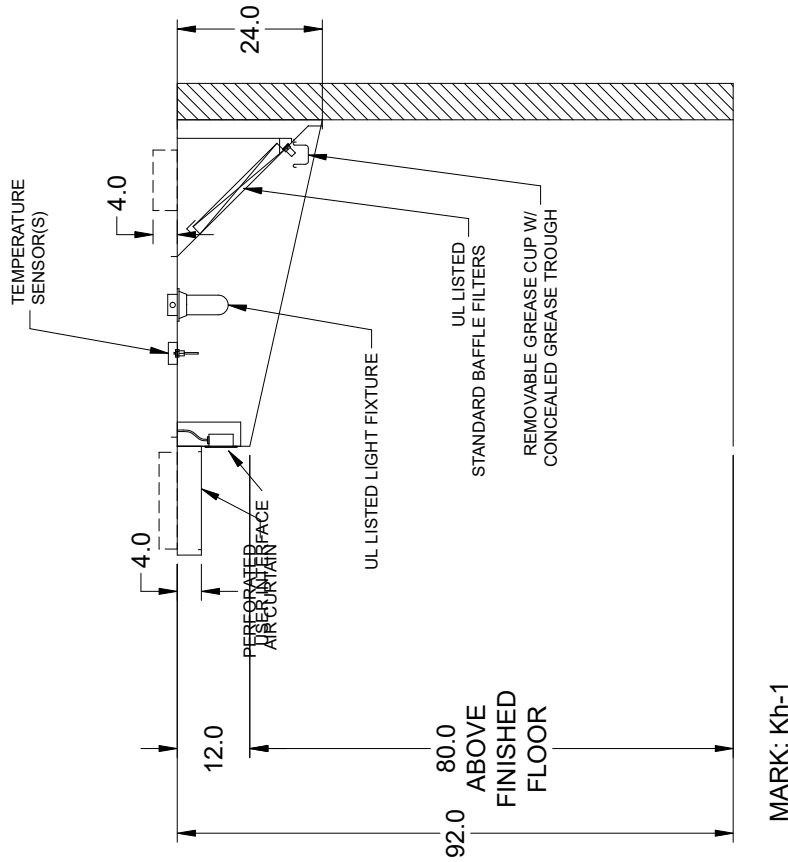
MARK: Kh-1 - SECTION 1
 ELEVATION VIEW

NOTE: All dimensions are in units of in.



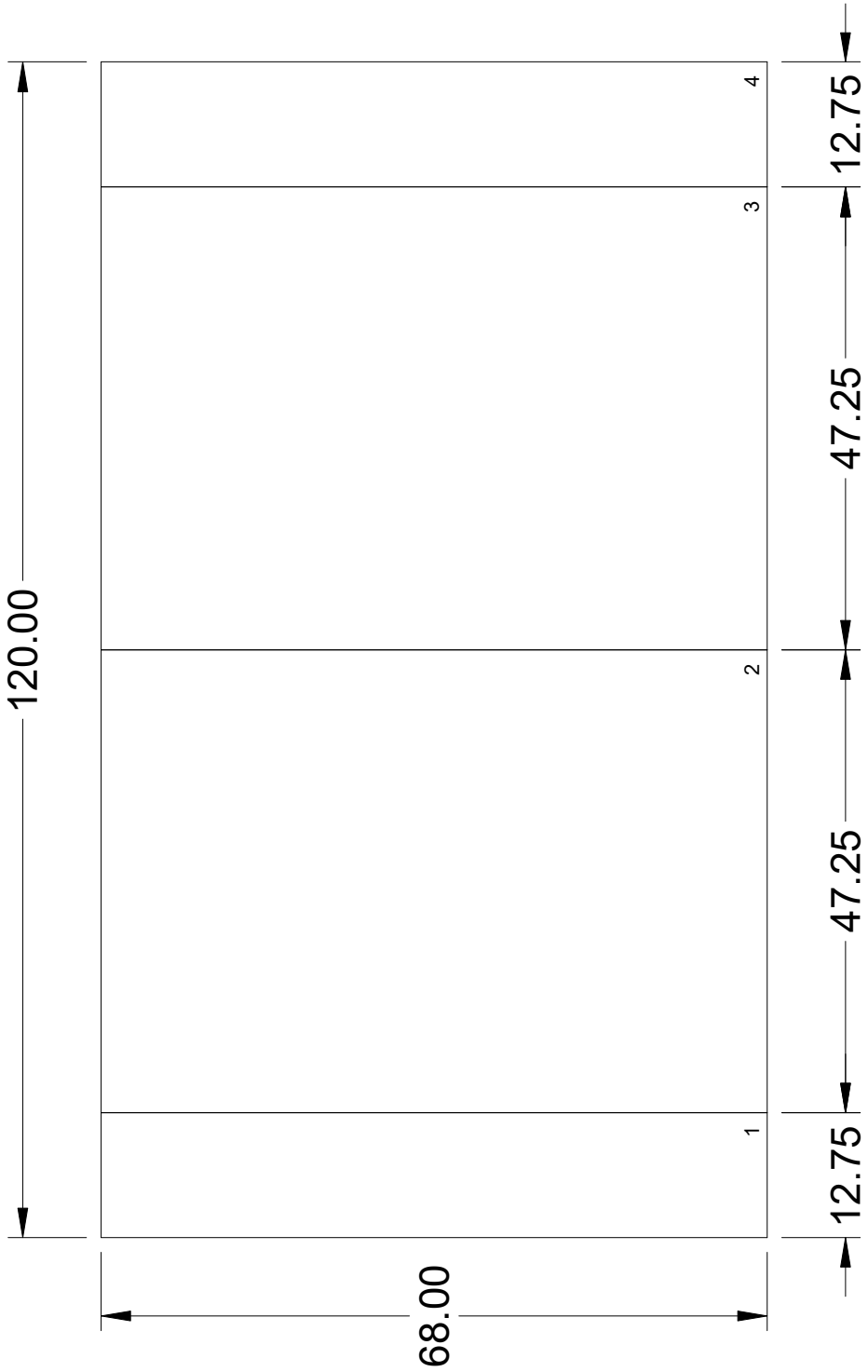
Hanger Bracket Locations			
Sec #	Brkt #	Distance Off Left (in)	Distance Off Front (in)
1	1	3.50	2.50
1	2	116.50	2.50
1	3	3.50	50.00
1	4	116.50	50.00

Bracket Mounting Position for 4 Bracket Hood	
3	4
1	2



NOTE: All dimensions are in units of in.





BACK SPLASH - FLAT

NOTE: All dimensions are in units of in.

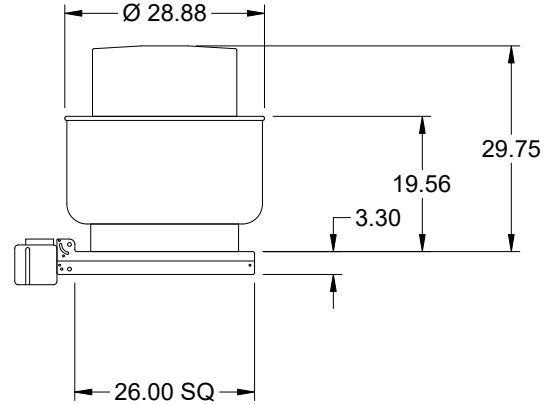


Model: XCUBE-160-10

Belt Drive Upblast Centrifugal Roof Exhaust Fan

Previously: No Change

Dimensional	
Quantity	1
Weight w/o Acc's (lb)	95
Weight w/ Acc's (lb)	115
Max T Motor Frame Size	145
Standard Curb Cap Size (in.)	26 x 26
Roof Opening (in.)	22.5 x 22.5

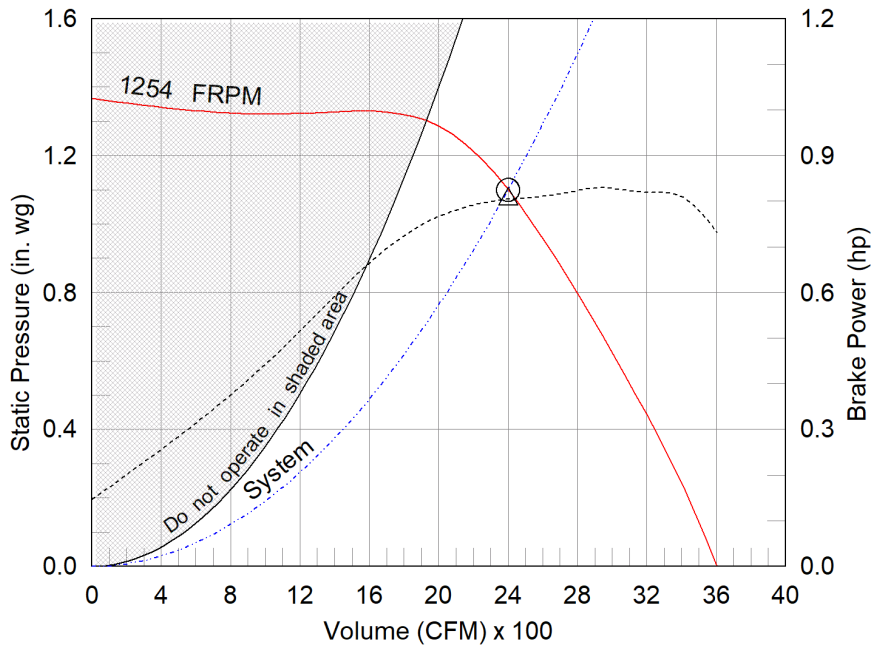


OVERALL HEIGHT MAY BE GREATER DEPENDING ON MOTOR, ADAPTER, AND/OR HINGE BASE.

Performance	
Requested Volume (CFM)	2,400
Actual Volume (CFM)	2,400
Total External SP (in. wg)	1.1
Fan RPM	1254
Operating Power (hp)	0.8
Elevation (ft)	10
Airstream Temp.(F)	70
Air Density (lb/ft3)	0.075
Drive Loss (%)	6.7
Tip Speed (ft/min)	5,460
Static Eff. (%)	55

Misc Fan Data	
Fan Eff. Index (FEI)	1.39
Outlet Velocity (ft/min)	1,395

Motor	
Motor Included	Yes
Size (hp)	1
Voltage/Cycle/Phase	115/60/1
Enclosure	ODP
Motor RPM	1725
Efficiency Rating	Standard
Windings	1
NEC FLA* (Amps)	16
Min. Circuit Ampacity (MCA)	20
Max. Overcurrent Protection (MOP)	40
Short Circuit Current Rtg (SCCR)	5 kA



- △ Operating Bhp point
- Operating point at Total External SP
- Fan curve
- - - System curve
- - - Brake horsepower curve

Notes:

All dimensions shown are in units of in.
 *NEC FLA, MCA and MOP are for reference only – based on tables 430.248 or 430.25 of National Electric Code 2020. Actual motor FLA may vary, for sizing thermal overload, consult factory.
 MCA and MOP values shown only account for the motor, not accessories (damper actuator, field supplied VFD, etc).
 LwA - A weighted sound power level, based on ANSI S1.4
 dBA - A weighted sound pressure level, based on 11.5 dB attenuation per Octave band at 5 ft - dBA levels are not licensed by AMCA International
 Sones - calculated using ANSI/AMCA 301 at 5 ft

Sound Power by Octave Band

Sound Data	62.5	125	250	500	1000	2000	4000	8000	LwA	dBA	Sones
Inlet	74	81	79	78	71	68	65	62	79	67	15.5



Model: XCUBE-160-10

Belt Drive Upblast Centrifugal Roof Exhaust Fan

Standard Construction Features:

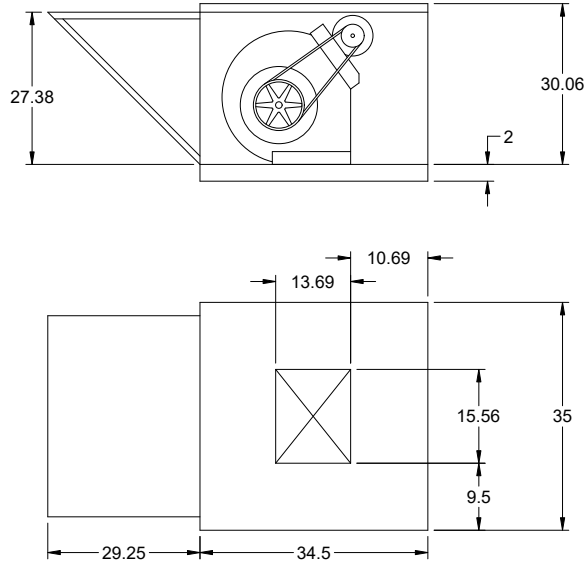
- Aluminum housing - Backward inclined aluminum wheel - Curb cap with prepunched mounting holes - Motor and drives isolated on shock mounts - Drain trough - Ball bearing motors - Adjustable motor pulley - Adjustable motor plate - Fan shaft mounted in ball bearing pillow blocks - Bearings meet or exceed temperature rating of fan - Static resistant belts - Corrosion resistant fasteners - Internal lifting lugs

Selected Options & Accessories:

Larger Curb Cap Size - 26 Square
UL/cUL 705 Listed - Supplement SC - "Power Ventilators for Restaurant Exh. Appliances" (Formerly UL 762)
Switch, NEMA-3R, Toggle,
Junction Box Mounted & Wired
Hinge, Factory Installed
High Temp Curb Seal Rated for Continuous Duty at 1500 F (Factory Attached)
Grease Trap (PN 475538)
Heat Baffle (Attached)
Conduit Chase Qty 1
Unit Warranty: 1 Yr (Standard)

Model: XRSW-112-5

Supply Air Fan

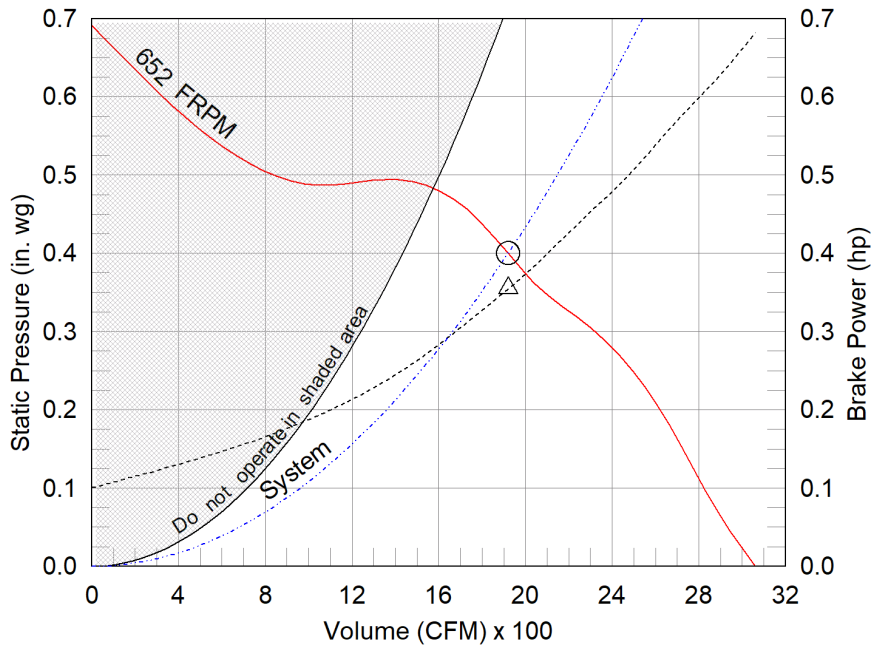


Dimensional	
Quantity	1
Weight w/o Acc's (lb)	196
Weight w/ Acc's (lb)	198
Max T Motor Frame Size	145
Roof Opening (in.)	20.5 x 20.5

Performance	
Requested Volume (CFM)	1,920
Actual Volume (CFM)	1,920
Total External SP (in. wg)	0.4
Fan RPM	652
Operating Power (hp)	0.36
Elevation (ft)	10
Airstream Temp.(F)	70
Air Density (lb/ft3)	0.075
Drive Loss (%)	10.1
Tip Speed (ft/min)	2,050
Static Eff. (%)	38

Misc Fan Data	
Fan Eff. Index (FEI)	-
Outlet Velocity (ft/min)	1,343

Motor	
Motor Mounted	Yes
Size (hp)	1/2
Voltage/Cycle/Phase	115/60/1
Enclosure	TEFC
Motor RPM	1725
Efficiency Rating	Standard
Windings	1
NEC FLA* (Amps)	9.8
Min. Circuit Ampacity (MCA)	12.25
Max. Overcurrent Protection (MOP)	25
Short Circuit Current Rtg (SCCR)	5 kA



- △ Operating Bhp point
- Operating point at Total External SP
- Fan curve
- - - System curve
- - - Brake horsepower curve

Notes:

All dimensions shown are in units of in.
 *NEC FLA, MCA and MOP are for reference only – based on tables 430.248 or 430.25 of National Electric Code 2020. Actual motor FLA may vary, for sizing thermal overload, consult factory.
 MCA and MOP values shown only account for the motor, not accessories (damper actuator, field supplied VFD, etc).
 LwA - A weighted sound power level, based on ANSI S1.4
 dBA - A weighted sound pressure level, based on 11.5 dB attenuation per Octave band at 5 ft - dBA levels are not licensed by AMCA International
 Sones - calculated using AMCA 301 at 5 ft

Sound Power by Octave Band

Sound Data	62.5	125	250	500	1000	2000	4000	8000	LwA	dBA	Sones
Outlet	88	85	71	69	64	62	60	51	74	62	13.8



Model: XRSW-112-5

Supply Air Fan

Standard Construction Features:

- Galvanized steel construction with removable hood cover - Curb cap with prepunched mounting holes - Blower and motor assembly isolated on shock mounts - Forward curved steel fan wheel - Adjustable motor pulley - Adjustable motor plate - Ball bearing motor - Fan shaft mounted in ball bearing pillow blocks - Static free belts - Corrosion resistant fasteners - 1 inch washable aluminum filters - downward facing duct collar - Nema 1 disconnect switch mounted and wiring is provided to the switch

Selected Options & Accessories:

UL/cUL 705 Listed - "Power Ventilators"
Switch, NEMA-1, Toggle,
Junction Box Mounted & Wired
Galvanized Construction
Standard - 1 in. Washable Aluminum Filters
Unit Warranty: 1 Yr (Standard)

Constant Volume

Accurex Kitchen Controls

Standard Construction Features:

Includes control system, Fan Starters (unless otherwise stated), Temperature Sensors, Touchscreen. IMC 507.1.1 compliant. UL/ULC Listed.

Options & Accessories:

Mounting Option	Ship Loose Enclosure - (12 x 20 x 6)
Exhaust Fan Quantity	1
Supply Fan Quantity	1
Hood Light Control	Yes
User Interface	Full Color Touchscreen
Touchscreen Mounting Location	Face Mount Right Side of Hood - Kh-1 Section 1
Additional Fire Contacts	Additional set of dry contacts (2 NO, 2 NC Total)
Exhaust During Fire	Exhaust fans will run at max speed when in fire mode

Controlled Fans:

Fan Mark	Fan Type	Supplied By	Phase	HP	Voltage	NEC FLA	Starter/VFD Required	Starter/VFD Provided
Kef-1	Exhaust	Manufacturer	1	1	115	16.0	Yes	Yes
Ksf-1	Supply	Manufacturer	1	0.5	115	9.8	Yes	Yes

Controlled Hood Sections and Fan Relationships:

Kh-1 Section - Number of Sensors = 1	
	Exhaust Fan Name - Kef-1
	Supply Fan Name - Ksf-1

