

Foodservice Equipment • Material Handling, Healthcare & Cleanroom Equipment • Retail Display

Cocktail Units

1800 Series



B2CT-18 cocktail unit

Item #:	_____
Model #:	_____
Project #:	_____
SIS #:	_____

Optional Accessories	Model #	Qty.
Cold plate		
Speed rail		
Stainless steel legs		
Stainless steel feet		
Lexan® ice cover		

- Body is all-welded type 304 stainless steel construction.
- Ice bins are deep-drawn, seamless design.
- Units are modular, providing for custom configurations using standard components.
- 4½" (114mm) back splash.
- 4 models to choose from.
- Adjustable plastic feet.

Spec sheets available for viewing, printing or downloading from our online literature library at www.eaglegrp.com

For custom configuration or fabrication needs, contact our **SpecFAB Division**.
 Phone: (302) 653-3000. FAX: (302) 653-3091.
 E-mail: specfab@eaglegrp.com

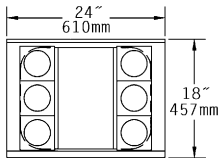
1800 Series Cocktail Units

Design and Construction Features

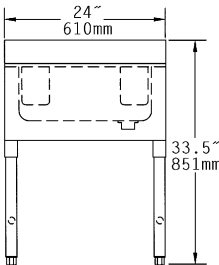
- All units are modular.
- 20 gauge type 304 stainless steel body (front and ends).
- Insulated deep-drawn seamless design ice bins are available in 60-lb. ice capacity (24" models) and 75-lb. capacity (36" models). All ice bins are 8" (203mm)-deep.
- Bottom and back panels are galvanized steel construction.
- 4½" (114mm) backsplash.
- Highly polished finish.
- Six or eight bottle capacity.
- Welded crossbraced galvanized legs.
- 1½" (38mm) drain.
- Cold plates – aluminum casting with 7 stainless steel beverage grade tubing circuits. Cold plates are mounted flush with interior bottom of bowl for easy cleaning and maximum efficiency. Drain is ½" (13mm) NPT. ¼" (6mm) O.D. tubing beverage connection provided.

Models without Cold Plate

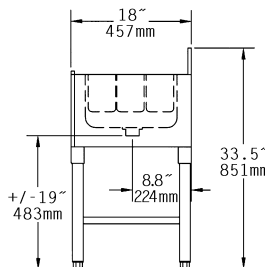
#B2CT-18
(non-NSF)



TOP VIEW

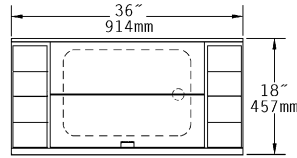


FRONT VIEW

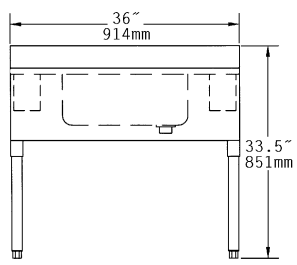


SIDE VIEW

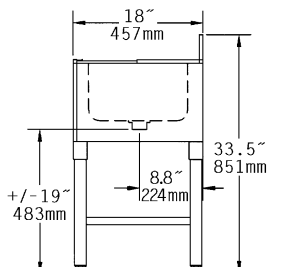
#B3CT-18



TOP VIEW



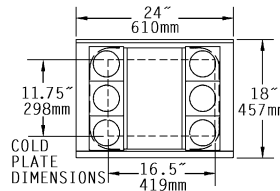
FRONT VIEW



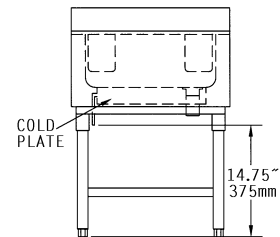
SIDE VIEW

Models with Cold Plate

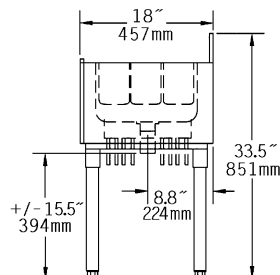
#B2CT-18-7
(non-NSF)



TOP VIEW

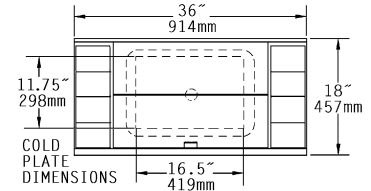


FRONT VIEW

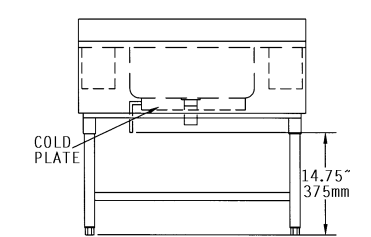


SIDE VIEW

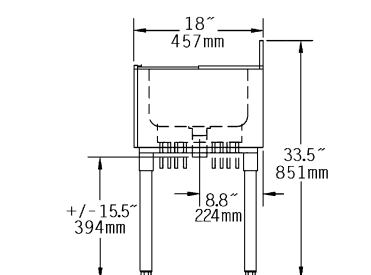
#B3CT-18-7



TOP VIEW



FRONT VIEW



SIDE VIEW

width x length in. mm	weight lbs. kg	model #
18" x 24" 457 x 610	58 26.3	B2CT-18
18" x 36" 457 x 914	70 31.8	B3CT-18

width x length in. mm	weight lbs. kg	model #
18" x 24" 457 x 610	88 39.9	B2CT-18-7
18" x 36" 457 x 914	100 45.4	B3CT-18-7