

ROOFTOP AIR CONDITIONING UNIT SCHEDULE

MARK	AREA SERVED	TOTAL SUPPLY AIR	MIN OA	ESP IN WG	SUPPLY FAN MOTOR QTY	HP	FILTERS	COOLING DATA					COMP. DATA			COND. FAN DATA		HEATING DATA			UNIT ELECTRICAL DATA			BASIS OF DESIGN	UNIT WEIGHT	REMARKS	EQUIPMENT HEIGHT WITH CURB	APPROVED EQUALS					
								TOTAL (MBH)	SHR	EDB	EWB	EER	QTY	HP (EACH)	FLA (EACH)	QTY	HP (EACH)	FLA (EACH)	FUEL	MBH INPUT	EFF %	STAGES	V/0/HZ					MCA	MFS	ELEC. DATA KW	V/0/HZ	BASIS OF DESIGN	REMARKS
RTU-1	KITCHEN	4000	900	0.8	1	3	2" TWAY	117.4	.94	85	67	10.2	2	5.1/3.9	18.6/14.7	1	.75	4.0	NAT GAS	150	81	2	208/3/60	52.6	60	TRANE YSC120	987 lbs.	①②③④⑤⑥⑦⑧⑨⑩⑪⑫	53"	CARRIER 48TM012	LENNOX LGC120S		
RTU-2	DINING	2200	550	0.6	1	1	2" TWAY	72.7	.89	85	67	10.2	1	6.0	19.0	1	.70	3.85	NAT GAS	120	81	1	208/3/60	32.7	50	TRANE YSC072	735 lbs.	①②③④⑤⑥⑦⑧⑨⑩⑪	53"	CARRIER 48TM007	LENNOX LGC072S		
RTU-3	DINING	3100	800	0.6	1	2	2" TWAY	104.2	.89	85	67	10.1	2	5.1/2.8	18.1/10.3	1	.75	4.0	NAT GAS	120	81	1	208/3/60	45.1	60	TRANE YSC102	899 lbs.	①②③④⑤⑥⑦⑧⑨⑩⑪	53"	CARRIER 48TM009	LENNOX LGC102S		
RTU-4	DINING	4500	1150	0.6	1	3	2" TWAY	147.0	.81	85	67	9.6	2	6.25	21.3	2	.5	3.2	NAT GAS	150	81	2	208/3/60	66	80	TRANE YCD150	1458 lbs.	①②③④⑤⑥⑦⑧⑨⑩⑪	62"	CARRIER 48TM014	LENNOX LGC150S		

- ① ALL COOLING CAPACITIES SHOWN ARE BASED ON AN AMBIENT OUTDOOR TEMPERATURE OF 95° F.
- ② CONTRACTOR SHALL INSTALL ALL NEW FILTERS PRIOR TO TEST AND BALANCE WORK.
- ③ PROVIDE LOW AMBIENT COOLING CAPABILITY DOWN TO 0° F.
- ④ PROVIDE ALL COMPRESSORS WITH 5 YEAR WARRANTIES.
- ⑤ ALL CAPACITIES LISTED ARE MINIMUM REQUIRED QUANTITIES.
- ⑥ PROVIDE UNIT WITH PROVISIONS FOR THROUGH THE BASE ELECTRICAL CONNECTION AND FACTORY MOUNTED FUSED DISCONNECT.
- ⑦ PROVIDE UNIT WITH UNPOWERED GFCI CONVENIENCE OUTLET.
- ⑧ PROVIDE UNIT WITH DUAL SETPOINT AUTO CHANGEOVER SENSOR WITHOUT OPTIONAL STATUS INDICATION LIGHTS
- ⑨ MOTORIZED OUTSIDE AIR DAMPER OPTION PROVIDED AND INSTALLED BY MECHANICAL CONTRACTOR.
- ⑩ PROVIDE UNIT WITH STANDARD KNOCK DOWN TYPE ROOF CURB
- ⑪ PROVIDE UNIT WITH FACTORY INSTALLED HINGED ACCESS PANELS
- ⑫ PROVIDE UNIT WITH ECONOMIZER, DIFFERENTIAL ENTHALPY CONTROL & BAROMETRIC RELIEF DAMPER.

FAN SCHEDULE

MARK	AREA SERVED	CFM	T.S.P. IN WG	MOTOR DATA			CONTROLLED BY	BASIS OF DESIGN	REMARKS	EQUIPMENT HEIGHT WITH CURB
				HP	RPM	V/0/HZ				
EF-1	MAIN COOKLINE	2460	1.5	1.0	1307	208/3/60	SWITCH AT HOOD	GREENHECK CUBE-180HP	-	48"
EF-2	MAIN COOKLINE	2460	1.5	1.0	1307	208/3/60	SWITCH AT HOOD	GREENHECK CUBE-180HP	-	48"
EF-3	MAIN COOKLINE	2460	1.5	1.0	1307	208/3/60	SWITCH AT HOOD	GREENHECK CUBE-180HP	-	48"
EF-4	DISHWASHER	1050	0.5	0.25	1535	120/1/60	SWITCH	GREENHECK GB-101	-	34"
EF-5	CUSTOMER TOILETS	230	0.25	81 watts	1050	120/1/60	LIGHT SWITCH	GREENHECK SP-226	-	N/A
EF-6	CUSTOMER TOILETS	270	0.25	81 watts	1050	120/1/60	LIGHT SWITCH	GREENHECK SP-226	-	N/A
SF-1	HOOD MAKE-UP AIR	5780	0.75	5.0	764	208/3/60	SWITCH AT HOOD	GREENHECK KSF-115	-	51"
FF-1	SERVICE DOOR	2550	-	0.5	1750	120/1/60	MICRO-SWITCH IN DOOR	MARS 42 CH	SWITCH PROVIDED W/ FAN INST. BY ELEC. CONT.	N/A
BF-1,2	SALAD BAR	300	0.10	81 watts	-	120/1/60	LOCAL SWITCH	GREENHECK CSP-226	-	N/A

1. PROVIDE BACKDRAFT DAMPER AND BIRD SCREEN ON EF-4.
2. PROVIDE EF- 5 & 6 WITH SOLID STATE SPEED CONTROLLER, BACKDRAFT DAMPER AND BIRDSCREEN.
3. PROVIDE EF-1, 2 & 3 WITH THE FOLLOWING GREASE CONTROL OPTIONS:
 - NON STICK WHEEL
 - CLEAN OUT PORT
 - HINGE KIT
 - FACTORY MOUNTED DISCONNECT SWITCH
 - DRAIN CONNECTION/ GREASE CONTAINER
 - VENTED CURB EXTENSION
 GREASE CONTROL OPTIONS SHALL BE INSTALLED PER MANUFACTURER'S RECOMMENDATIONS
4. PROVIDE SF-1 WITH THE FOLLOWING OPTIONS:
 - EXTENDED WEATHERHOOD AND ALUMINUM 1" MESH FILTER.
 - ALUMINUM 1" MESH FILTER.
 - FACTORY MOUNTED DISCONNECT SWITCH
 - FACTORY MOUNTED HASP LATCHES (FILTER CHANGE)
5. PROVIDE BF-1 & BF-2 WITH SOLID STATE SPEED CONTROLLERS.
6. APPROVED EQUALS: COOK, PENN & CAPTIVE/AIRE

AIR BALANCE SCHEDULE

MARK	KITCHEN	DINING
RTU-1	+ 900 CFM	-
RTU-2	-	+ 550 CFM
RTU-3	-	+ 800 CFM
RTU-4	-	+ 1150 CFM
EF-1	- 2460 CFM	-
EF-2	- 2460 CFM	-
EF-3	- 2460 CFM	-
EF-4	- 1050 CFM	-
EF-5	-	- 230 CFM
EF-6	-	- 270 CFM
SF-1	HOOD #1 + 1230 CFM	-
	HOOD #2 + 1230 CFM	-
	HOOD #3 + 1230 CFM	-
	OUTSIDE HOOD + 2090 CFM	-
TOTALS	- 1750 CFM	+ 2000 CFM
TOTAL SPACE	+ 250 CFM	

AIR DEVICE SCHEDULE

MARK	RECT. NECK SIZE	ROUND NECK SIZE	CFM	THROW PATTERN	BASIS OF DESIGN	REMARKS
A	-	12"	600	4-WAY	METAL*AIRE 7500AL-6	T-BAR LAY IN
B	-	12"	500	4-WAY	METAL*AIRE 7500AL-6	T-BAR LAY IN
C	-	10"	400	4-WAY	METAL*AIRE 7500AL-6	T-BAR LAY IN
D	-	10"	300	4-WAY	METAL*AIRE 7500AL-6	T-BAR LAY IN
E	-	10"	250	4-WAY	METAL*AIRE 7500AL-6	T-BAR LAY IN
F	20"x18"	-	-	-	METAL*AIRE V4004D	SURFACE MOUNT
G	-	8"	200	4-WAY	METAL*AIRE 7500AL-1	SURFACE MOUNT
H	-	8"	200	4-WAY	METAL*AIRE 7500AL-1	SURFACE MOUNT
J	-	12"	600	2-WAY	METAL*AIRE 7500AL-6	T-BAR LAY IN
K	12"x12"	6"	100	4-WAY	METAL*AIRE 7500AL-6	SURFACE MOUNT
R	20" x 20"	-	-	RETURN AIR	METAL*AIRE RHE	T-BAR LAY IN
R2	12" x 12"	-	-	RETURN AIR	METAL*AIRE RHE	SURFACE MOUNT
T	12" x 12"	-	-	TRANSFER AIR	METAL*AIRE RHE	T-BAR LAY IN

1. ALL LAY-IN AIR DEVICES SHALL BE FOR 24" x 24" CEILING MODULES
2. DIFFUSER "H": 14"x14" FACE SIZE
3. DIFFUSERS AND GRILLES IN DINING AREAS SHALL BE SUPPLIED WITH BAKED-ON BLACK FINISH
4. ALL AIR DEVICES SHALL BE CONSTRUCTED OF ALUMINUM.
5. METAL*AIRE AND PRICE ARE THE ONLY APPROVED MANUFACTURERS.

HVAC AND MATERIAL

THE FOLLOWING HVAC EQUIPMENT AND MATERIALS SHALL BE PROVIDED AND INSTALLED BY THE MECHANICAL CONTRACTOR:

HVAC EQUIPMENT:
INCLUDES ALL ROOFTOP HEATING / COOLING EQUIPMENT WITH ALL ACCESSORIES AS SPECIFIED THIS SHEET, THE PLANS AND IN THE SPECIFICATIONS (DAMPERS, THERMOSTATS AND SMOKE DETECTORS).

FANS:
INCLUDES ALL EXHAUST, SUPPLY AND FLY FANS AS SPECIFIED ON THIS SHEET.

AIR DEVICES:
INCLUDES ALL REGISTERS, GRILLES, DIFFUSERS AND DAMPERS PER PLANS AND SPECIFICATIONS. DINING ROOM AIR DEVICES PRE-PAINTED WITH BLACK BAKED ENAMEL FINISH. SQUARE TO ROUND TRANSITIONS PROVIDED WHERE NECESSARY BY CONTRACTOR.

CURBS:
INCLUDES ALL ROOFTOP, EXHAUST FAN AND CONDENSING UNIT CURBS, INCLUDING EQUIPMENT RAILS AND PIPE CURBS. ALL CURBS TO BE ONE-PIECE AND FULLY WELDED.

ELECTRIC HEATER:
INCLUDES ALL UNIT HEATERS AND DUCT HEATERS.

SMOKE FILTERS:
INCLUDES ALL SMOKE FILTERS.

THE HVAC CONTRACTOR WILL BE RESPONSIBLE FOR PROVIDING ALL OTHER ITEMS REQUIRED AND SPECIFIED TO PROVIDE A COMPLETE JOB. THE HVAC CONTRACTOR WILL BE RESPONSIBLE FOR EQUIPMENT DELIVERY COORDINATION, RECEIVING AND STORING OF THIS EQUIPMENT PACKAGE, INSTALLATION AS DESCRIBED IN THE SPECIFICATIONS.

TRANE HVAC AND MATERIALS PACKAGE
A HVAC AND MATERIAL PACKAGE IS AVAILABLE FROM TRANE NATIONAL ACCOUNTS. THE SUCCESSFUL HVAC CONTRACTOR HAS THE OPTION TO PLACE THE ORDER FOR THIS PACKAGE DIRECTLY WITH TRANE NATIONAL ACCOUNTS.

FOR COMPLETE INFORMATION AND PRICING ON THE HVAC AND MATERIAL PACKAGE: CONTACT THE RUBY TUESDAY REPRESENTATIVE AT TRANE NATIONAL ACCOUNTS. (ALAN HASEMEYER: 888-845-4042).

THE EQUIPMENT AND MATERIALS IN THIS PACKAGE HAVE BEEN SPECIFICALLY SELECTED FOR THIS APPLICATION AND ARE STOCKED IN ADVANCE DUE TO LONG LEAD TIMES. MANY ITEMS FOUND IN THE TRANE HVAC PACKAGE ARE UNIQUE TO RUBY TUESDAY AND EQUALS ARE SOMETIMES DIFFICULT TO PROVIDE.

ELECTRIC UNIT HEATER SCHEDULE

MARK	AIR QTY CFM	DISCHARGE DIRECTION	ELEC. DATA		BASIS OF DESIGN	REMARKS
			KW	V/0/HZ		
UH-1 & 2	400	HORIZONTAL	5	208/1/60	TRANE UHEC-052	MOUNT 9'-0" A.F.F.
UH-3 & 4	-	VERTICAL	2	208/1/60	TRANE UHAA-3320	-

- PROVIDE UH-1 & 2 WITH UNIT MOUNTED LINE VOLTAGE THERMOSTATS
PROVIDE UH-3 & 4 WITH WALL MOUNTED LINE VOLTAGE THERMOSTATS

ELECTRIC DUCT HEATER SCHEDULE

MARK	DUCT SIZE	ELECTRICAL DATA			BASIS OF DESIGN	REMARKS
		KW	STEPS	V/0/HZ		
DH-1	24"x14"	25	2	208/3/60	TUTCO	-

- PROVIDE DH-1 WITH AIRFLOW SWITCH, DUCT MOUNTED LIMIT THERMOSTAT, ENCLOSED CONTACTORS AND CONTROL TRANSFORMER. THE DUCT HEATER SHALL BE FUSED PER N.E.C. AND SHALL BE U.L. LISTED.

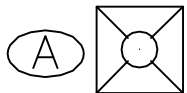
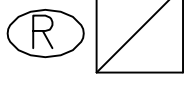
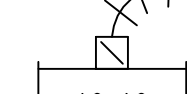
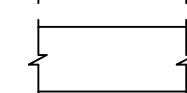
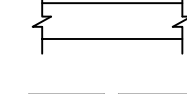
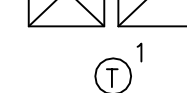
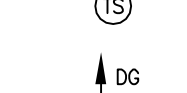
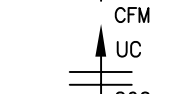
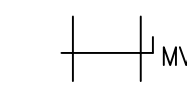


SMOKE FILTER SCHEDULE

MARK	CFM	ELECTRICAL DATA			BASIS OF DESIGN	WEIGHT
		LOW/HIGH	V/0/HZ	FLA		
SF	350/1020	120/1/60	6.4	SMOKEEETER SE 24	118 LBS.	

MECHANICAL NOTES

1. CONTRACTOR SHALL VERIFY THAT ALL EQUIPMENT, AS SHOWN ON THESE DRAWINGS, WILL NOT CONFLICT WITH ANY DRAINS, SCUTTLES, JOINTS, VENTS, ETC.
2. ALL ROOF MOUNTED EQUIPMENT AND PENETRATIONS SHALL BE FLASHED A MINIMUM OF 12" ABOVE THE ROOF VIA ROOF CURBS AND PIPE SEALS. PROVIDE AMPLE SUPPLY OF PIPE SEALS TO ACCOMMODATE ELECTRICAL CONDUIT PENETRATIONS.
3. ALL HOOD MAKE-UP AIR INTAKES AND OUTSIDE AIR INTAKES SHALL BE A MINIMUM OF 15'-0" FROM ANY EXHAUST FAN OR PLUMBING VENT.
4. THE MECHANICAL CONTRACTOR SHALL BE RESPONSIBLE FOR ADMINISTERING ALL WARRANTIES ON EQUIPMENT WHICH HE INSTALLS. THIS INCLUDES ALL CONDENSERS, REFRIGERANT LINES, AND OTHER ITEMS FURNISHED BY OTHERS AS WELL AS THOSE FURNISHED BY HIM.
5. CONDENSATE LINES (FULL SIZE OF CONDENSATE DRAIN OUTLET) FOR ROOFTOP AIR CONDITIONING UNITS SHALL BE TRAPPED AND THEN ROUTED TO SPLASHBLOCK LOCATED ADJACENT TO UNIT.
6. PROVIDE VIBRATION ISOLATION DEVICES AND FLEXIBLE CONNECTIONS TO ALL MOVING MACHINERY.
7. ALL DUCT DIMENSIONS SHOWN ON DRAWINGS ARE CLEAR INSIDE DIMENSIONS.
8. THIS CONTRACTOR SHALL COORDINATE ALL DUCT AND DIFFUSER LOCATIONS WITH LIGHTING LAYOUTS AS REQUIRED.
9. THE CONTRACTOR SHALL PROVIDE COMPLETE INFORMATION AND COOPERATION TO THE OTHER CONTRACTORS AND TRADES AS REQUIRED FOR COMPLETION AND COORDINATION OF THE COMPLETE PROJECT.
10. THIS CONTRACTOR SHALL COORDINATE WITH THE GENERAL CONTRACTOR AND OTHER TRADES, ALL REQUIRED OPENINGS AND EXCAVATIONS. ALL REQUIRED OPENINGS IN FOUNDATIONS, FLOORS, WALLS AND ROOFS SHALL BE DESIGNED INTO THE STRUCTURE INITIALLY BY THE USE OF SLEEVES, CURBS, ETC. CUTTING AND PATCHING SHALL BE HELD TO A MINIMUM.
11. THERMOSTATS SHALL BE LOCATED GENERALLY AS SHOWN BUT THEIR EXACT LOCATION SHALL BE FIELD COORDINATED TO AVOID INTERFERENCE WITH WALL MOUNTED ITEMS. ALSO MOUNT THERMOSTATS IN COMPLIANCE WITH ADAAG CODE SECTION 4.27.
12. CONTRACTOR TO INSULATE BACKSIDE OF ALL DIFFUSERS WITH 2" MINIMUM OWENS-CORNING FIBERGLASS ALL SERVICE FACED DUCT WRAP.
13. CONTRACTOR TO FABRICATE ALL DUCTWORK TRANSITIONS AS REQUIRED TO ATTACH DUCTWORK TO HVAC EQUIPMENT AND AIR DEVICES.
14. ALL ROUND DUCT AND FLEX DUCT RUN OUTS SHALL BE THE SAME DIAMETER AS DIFFUSER NECK UNLESS NOTED OTHERWISE.
15. PROVIDE RECTANGULAR TO ROUND TRANSITIONS FOR ALL RECTANGULAR NECK DIFFUSERS.

MECHANICAL LEGEND

	SUPPLY DIFFUSER WITH DESIGNATION
	RETURN AIR GRILLE WITH DESIGNATION
	ROUND INSULATED FLEX DUCT (SAME SIZE AS DIFFUSER NECK)
	RECTANGULAR SUPPLY DUCT WITH ROUND SPIN-IN TAP WITH SCOOP AND DAMPER
	RECTANGULAR SUPPLY/RETURN AIR DUCT
	RECTANGULAR EXHAUST DUCT
	SUPPLY AND RETURN (OR EXHAUST) DUCT PENETRATING ROOF (OR FLOOR).
	WALL MOUNTED THERMOSTAT FOR UNIT INDICATED
	REMOTE TEST STATION FOR UNIT INDICATED
	DOOR GRILLE, CFM AND AIR FLOW AS INDICATED
	UNDERCUT DOOR, CFM AND AIR FLOW AS INDICATED
	MANUAL VOLUME DAMPER

CONTROL NOTES

THE MECHANICAL CONTRACTOR SHALL PROVIDE ALL CONTROL WIRING DIAGRAMS FOR THE HVAC EQUIPMENT. 24 VOLT WIRING SHALL BE PROVIDED AND INSTALLED BY THE MECHANICAL CONTRACTOR. PROVIDE ADDITIONAL 24 VOLT TRANSFORMERS AS REQUIRED.

ROOFTOP AIR CONDITIONING UNITS

THE AIR CONDITIONING UNIT FANS, HEATING AND COOLING SHALL BE CONTROLLED FROM ROOM THERMOSTAT SENSORS LOCATED APPROXIMATELY AS SHOWN ON THE PLANS. THERMOSTATS SHALL BE MOUNTED ON SINGLE GANG JUNCTION BOX BY THIS CONTRACTOR AT LOCATIONS AND HEIGHTS INDICATED ON SHEET K5. ALL CONDUIT AND JUNCTION BOXES SHALL BE BY ELECTRICAL CONTRACTOR. CONTRACTOR SHALL ALSO VERIFY CLEARSPACE REQUIREMENTS FOR COMPLIANCE WITH ADAAG 4.2.6.

FANS

EF-1, EF-2, EF-3, & SF-1 SHALL BE CONTROLLED BY A SWITCH ON THE FACE OF THE MAIN COOKLINE HOOD.

EF-4 SHALL BE CONTROLLED BY THE DISHMACHINE SWITCH.

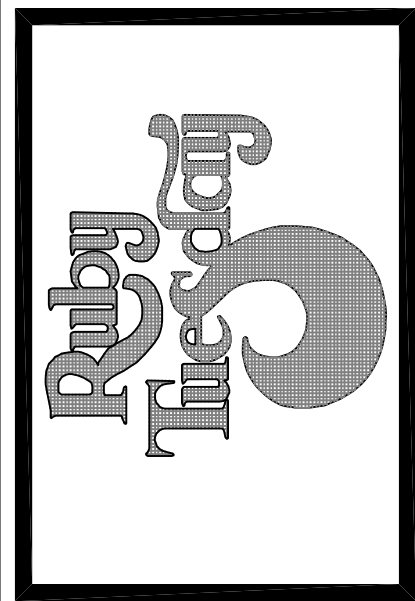
EF-5 & 6 SHALL BE CONTROLLED BY A SWITCH LOCATED AT THE REAR DOOR. SEE ELECTRICAL DRAWINGS.

FF-1 SHALL BE CONTROLLED BY A MICRO-SWITCH LOCATED ON THE REAR DOOR.

SMOKE DETECTORS

PROVIDE EACH AIR CONDITIONING UNIT WITH A FACTORY MOUNTED SMOKE DETECTOR IN THE SUPPLY AND RETURN AIR SECTIONS OF EACH UNIT, CAPABLE OF SHUTTING DOWN THE AIR CONDITIONING UNIT UPON ACTIVATION. REMOTE TEST STATION WILL BE PROVIDED FOR EACH RTU FOR INSTALLATION BY THE MECHANICAL CONTRACTOR AS SHOWN ON THE PLANS. TEST STATIONS SHALL BE MOUNTED ON DOUBLE GANG JUNCTION BOXES BY THIS CONTRACTOR AT LOCATIONS AND HEIGHTS INDICATED ON SHEET K5. ALL CONDUIT AND JUNCTION BOXES SHALL BE BY ELECTRICAL CONTRACTOR. CONTRACTOR SHALL ALSO VERIFY CLEARSPACE REQUIREMENTS FOR COMPLIANCE WITH ADAAG 4.2.6.

MARK	REVISION	DATE
A	DW BOOSTER HEATER	9/29/05



Kurzynske & Associates
625 Third Avenue, South
Nashville, TN 37203
(615) 255-5203

ENGINEER

SEAL

Alan Hase Meyer
ALAN HASEMEYER
Professional Engineer
License No. 2887
MECHANICAL
LOUISIANA

HVAC SCHEDULES

RUBY TUESDAY # 47

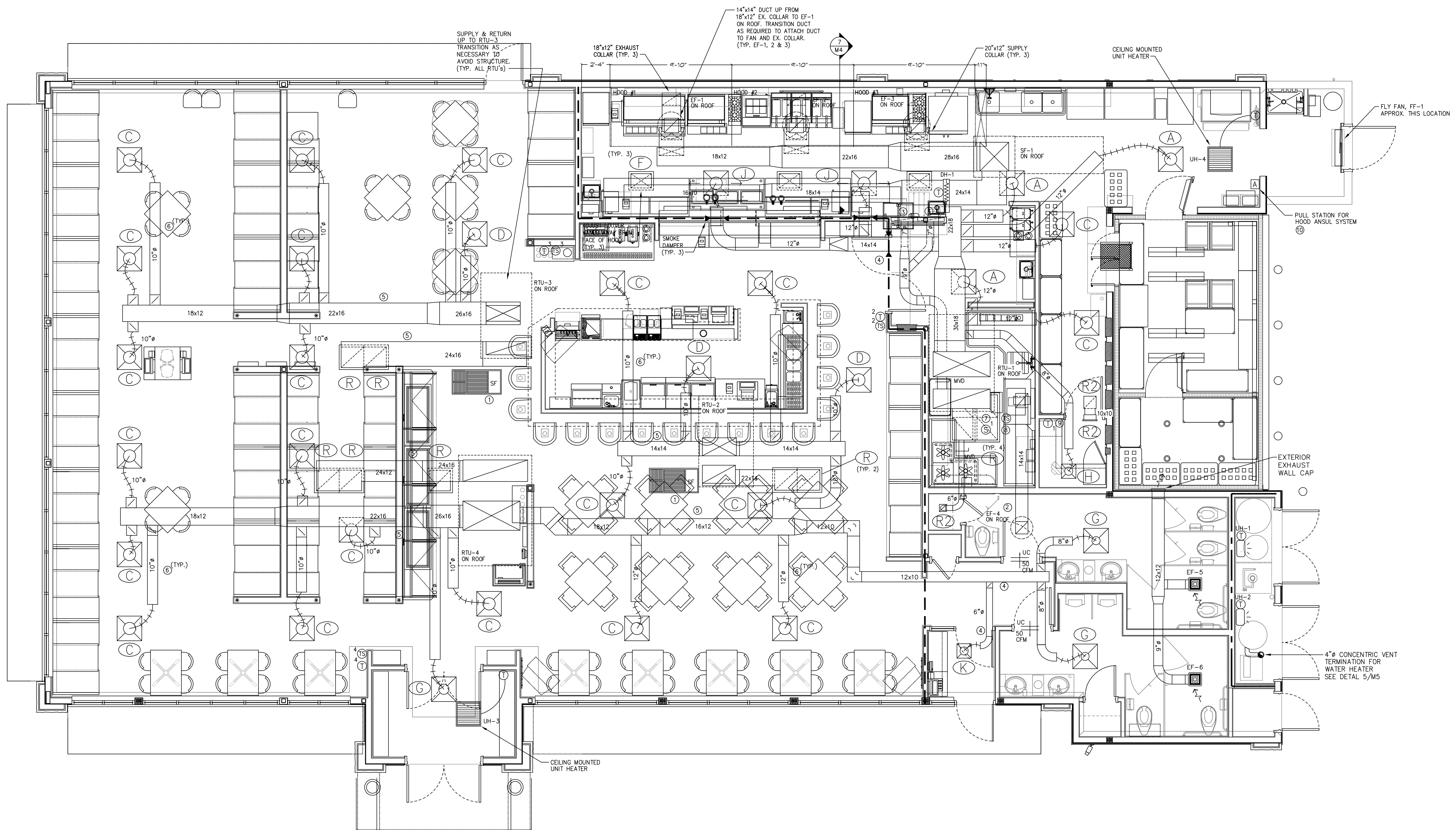
1-10E SERVICE ROAD at TYLER DRIVE (1-10 at SLIDELL

K&A PROJECT NUMBER
RT0522
ISSUE FOR REVIEW
JULY 22, 2005
ISSUE FOR CONSTRUCTION

CHECKED BY

SCALE
AS NOTED
SHEET NUMBER

M-2



1 MECHANICAL HVAC PLAN
 M1 SCALE: 1/4" = 1'-0"

MECHANICAL KEYNOTES

- ① SMOKE FILTER - SEE M2 FOR SCHEDULE, MOUNT BETWEEN JOISTS
- ② 14"x14" DUCT UP TO EF-4, TRANSITION AS REQUIRED TO ATTACH DUCT TO DISHWASHER EXHAUST COLLAR
- ③ ROUTE 7" RETURN DUCTS IN TO DIMMER SWITCH CHASE WALL. SEAL TOP OF WALL AND CHASE TO PREVENT LEAKAGE AND PROVIDE 12"x12" GRILLE (SEE R2 - AIR DEVICE SCHEDULE - SHEET M2) 12" A.F.F. (ON DINING ROOM SIDE) BETWEEN THE TWO STUDS THAT CONTAIN DIMMER SWITCHES.
- ④ CONTRACTOR SHALL SEAL DUCTWORK PENETRATION OF DRAFTSTOP
- ⑤ ROUTE DUCTWORK BETWEEN JOISTS
- ⑥ ROUTE SUPPLY RUN-OUTS IN JOIST WEBS
- ⑦ MOUNT AIR SENSOR IN RETURN DUCTWORK
- ⑧ CEILING MOUNTED REMOTE TEST STATION
- ⑨ MOUNT THERMOSTAT FOR RTU-1 IN OFFICE.
- ⑩ RECESSED AND COVERED PULL STATION BY BROOKS EQUIPMENT CO. 1-800-826-3473 PULL STATION COVER - ST1200

DUCTWORK NOTES

1. DUCTWORK SHALL BE CONSTRUCTED AND INSTALLED AS SPECIFIED IN SECTION 15500, PART2, PRODUCTS, I. SHEET METAL WORK & SECTION 15500, PART2, PRODUCTS, II. FIBROUS GLASS BOARD DUCT.
2. DUCT BOARD MAY BE USED IN THE DINING AREA ONLY WHEN COMPLETELY CONCEALED ABOVE CEILING. IT MAY NOT BE USED IN KITCHEN OR FOR ANY EXHAUST DUCT OR DUCT THAT IS EXPOSED.
3. MECHANICAL CONTRACTOR SHALL VERIFY WITH GENERAL CONTRACTOR ALL MECHANICAL SYSTEMS AND DUCTWORK SHALL NOT PREVENT INSTALLED CEILING HEIGHTS FROM BEING AS DESIGNED.

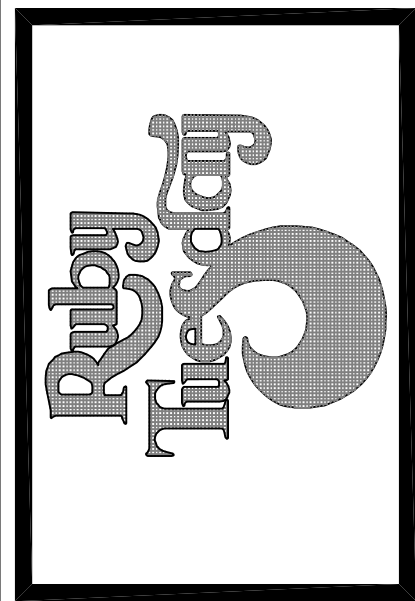
OFFICE CEILING HEIGHT

THE CEILING IN THE OFFICE IS TO BE INSTALLED AT MAXIMUM HEIGHT. MECHANICAL CONTRACTOR TO INSTALL ALL DUCTWORK TIGHT TO STRUCTURE IN THIS AREA TO ENSURE CEILING CAN BE INSTALLED AS HIGH AS POSSIBLE.

HVAC SMOKE DETECTORS

1. MECHANICAL CONTRACTOR TO COORDINATE WITH FIRE ALARM CONTRACTOR TO ENSURE HVAC SMOKE DETECTORS ARE COMPATIBLE WITH THE FIRE ALARM SYSTEM (IF REQUIRED).

MARK	REVISION	DATE
A	DW/BOOSTER HEATER	9/29/05



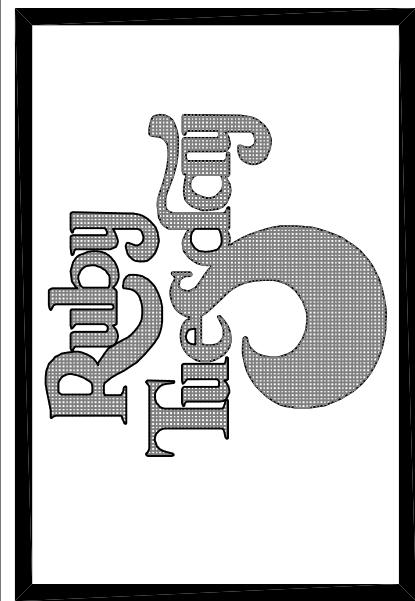
Kurzynske & Associates
 825 Third Avenue, South
 Nashville, TN 37203
 (615) 255-5203
 ENGINEER



MECHANICAL HVAC PLAN
 RUBY TUESDAY # 47
 1-10E SERVICE ROAD at TYLER DRIVE (1-10 at SLIDELL)

K&A PROJECT NUMBER RT0522
ISSUE FOR REVIEW JULY 22, 2005
ISSUE FOR CONSTRUCTION
CHECKED BY
SCALE AS NOTED
SHEET NUMBER M-1

MARK	REVISION	DATE
1	DW/BOOSTER HEATER	9/29/05



Kurzynske & Associates
 825 Third Avenue, South
 Newville, (615) 255-5203

ENGINEER

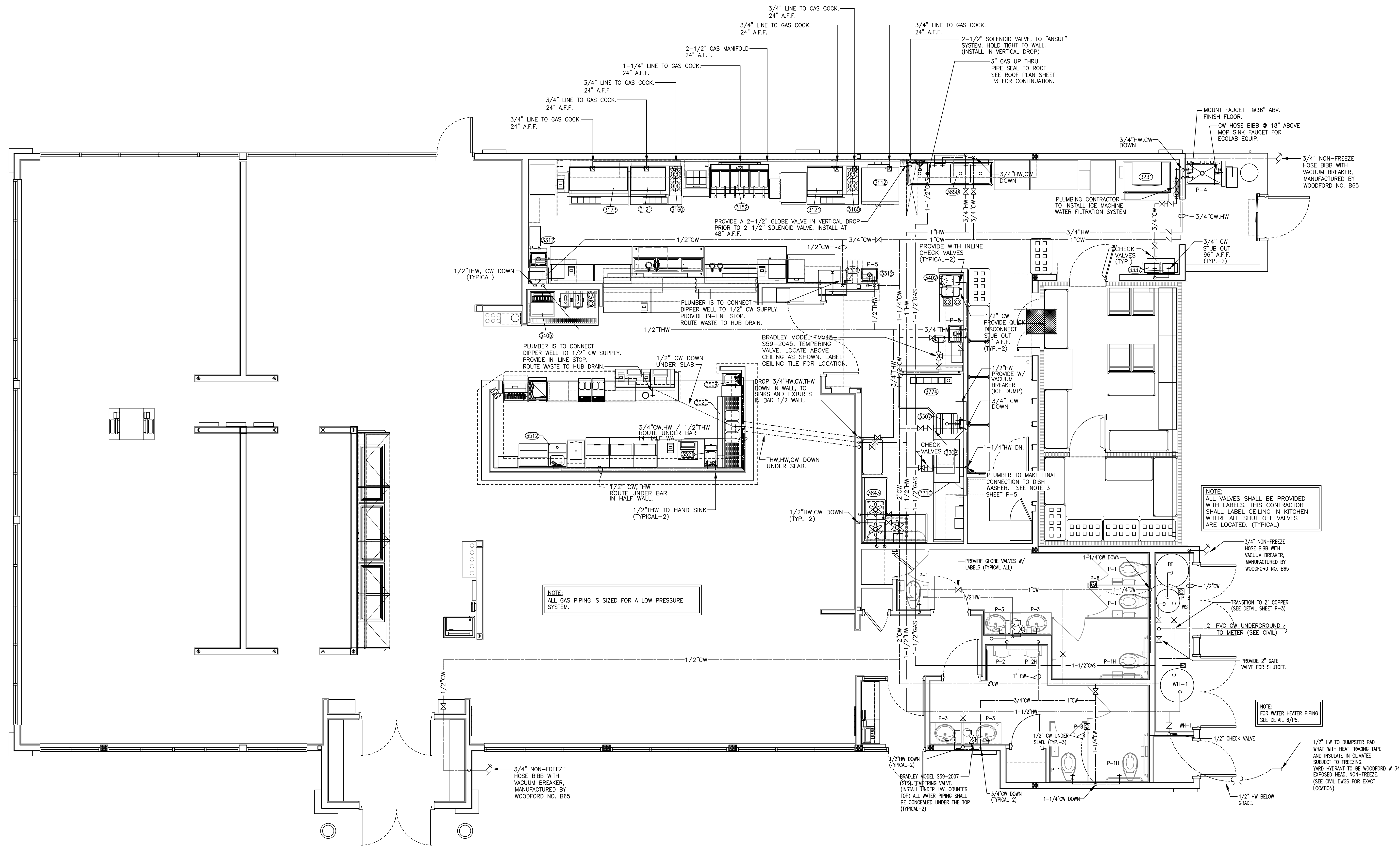


PLUMBING WATER & GAS PLAN

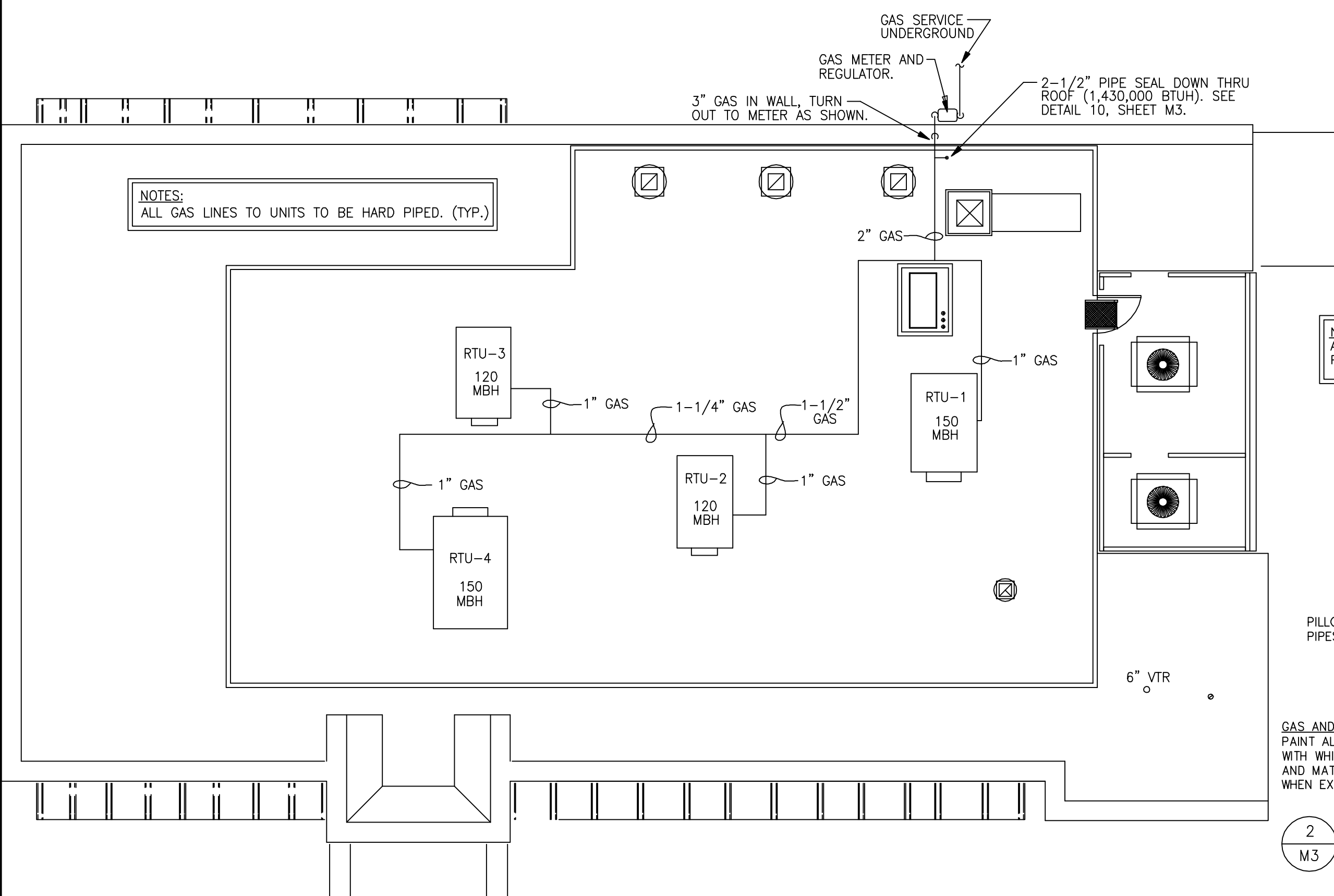
RUBY TUESDAY # 47

1-10E SERVICE ROAD at TYLER DRIVE (1-10 at SLIDELL)

K&A PROJECT NUMBER RT0522
ISSUE FOR REVIEW JULY 22, 2005
ISSUE FOR CONSTRUCTION
CHECKED BY
SCALE AS NOTED
SHEET NUMBER P-1



1 WATER & GAS PLAN
 P1 SCALE: 1/4"=1'-0"

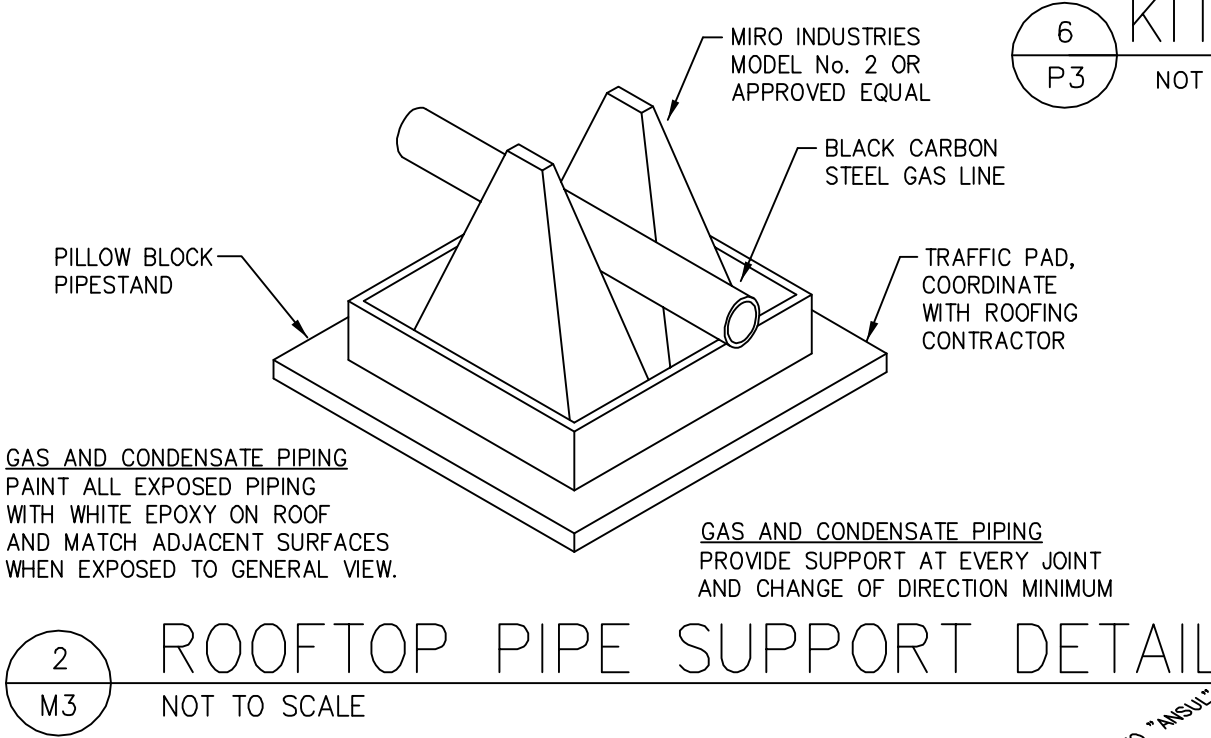


NOTE:
ALL GAS PIPING IS SIZED FOR A LOW
PRESSURE SYSTEM. (0.25psig/ 7" w.c.)

ITEM	DESCRIPTION	CW	HW	TW	AFF	DW	IW	GAS	BTUH	AFF	ITEM	DESCRIPTION	CW	HW	TW	AFF	DW	IW
3112	DOUBLE CONVECTION OVEN							s"	120,000	24"	3402	COFFEE/TEA BREWER		i"				
3121	36" GAS GRIDDLE							s"	180,000	24"	3405	BEVERAGE DISPENSER		i"		12"		2"
3123	60" GAS GRIDDLE							s"	150,000	24"	3509	BLENDER STATION		i"	i"	12"		11"
3152	GAS FRYER - TRIPLE							1"	420,000	24"	3512	48" COCKTAIL STATION		i"	i"	12"		11"
3160	GAS HOT PLATE							s"	40,000	24"	3520	3-COMP. BAR SINK		i"	i"	12"		11"
3172	FOOD WARMER							1"			3521	12" HAND SINK		i"		1"	12"	11"
3231	ICE MACHINE				96"		1"				3545	BEER TOWER W/ DRAIN						11"
3242	SALAD BAR						1"				3550	FROZEN DRINK MACHINE						1"
3306	DIPPER WELL				18"		1"				3566	DRAINBOARD						1"
3307	PRE-RINSE SINK				8"		2"				3774	DISH TABLE		i"	i"	8"		2"
3308	DISHMACHINE				60"		2"				3843	3-COMP SINK		i"	i"	8"		2"
3310	BOOSTER HEATER				12"						3850	3-COMP SINK		i"	i"	8"		2"
3312	HAND SINK				20"	11"					3916	DRINK TROUGH						1"
3337	CARBONATOR				42"						3936	GLASS RACK						1"

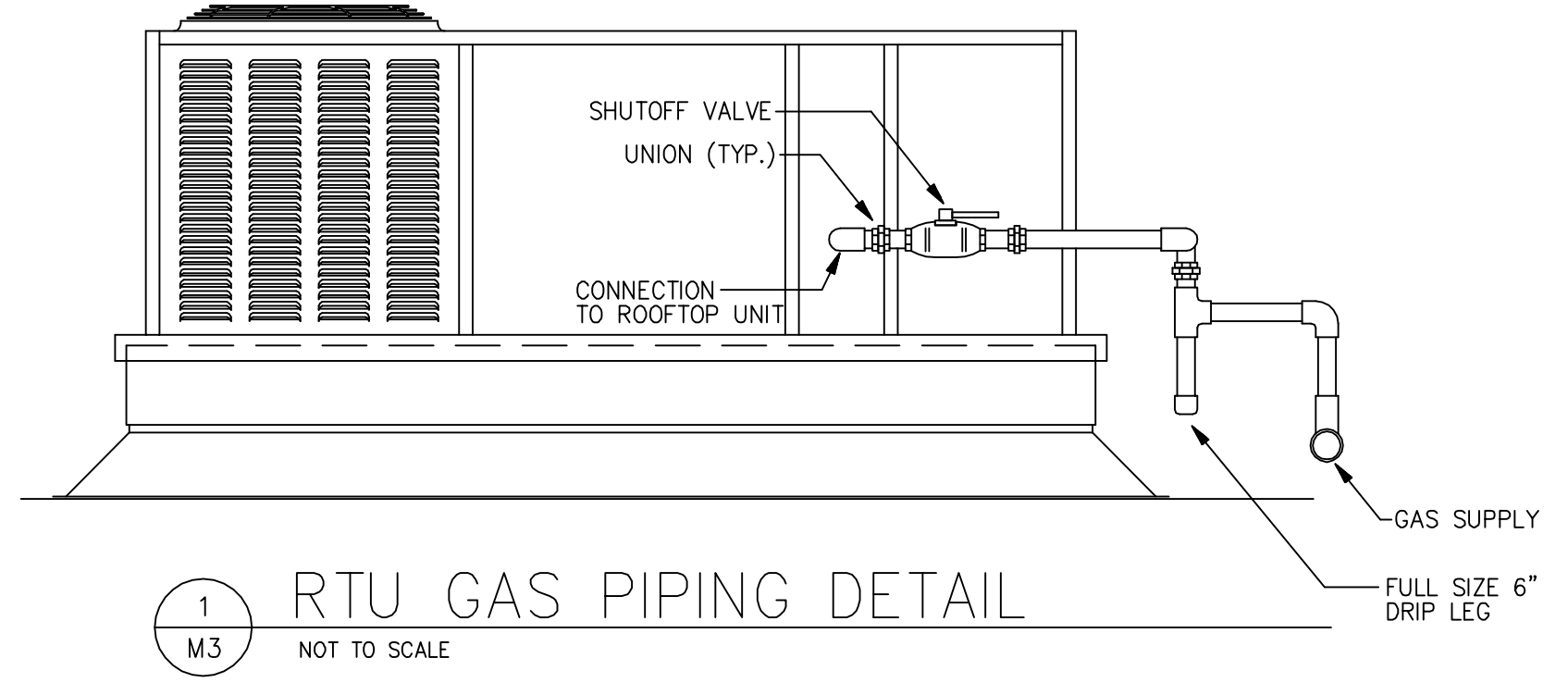
VERIFY PLUMBING REQUIREMENTS AND ROUGH-IN DIMENSIONS WITH FINAL EQUIPMENT SELECTION.
COORDINATE WITH KITCHEN EQUIPMENT SUPPLIER PRIOR TO INSTALLATION.

6 KITCHEN EQUIPMENT PLUMBING SCHEDULE
P3 NOT TO SCALE

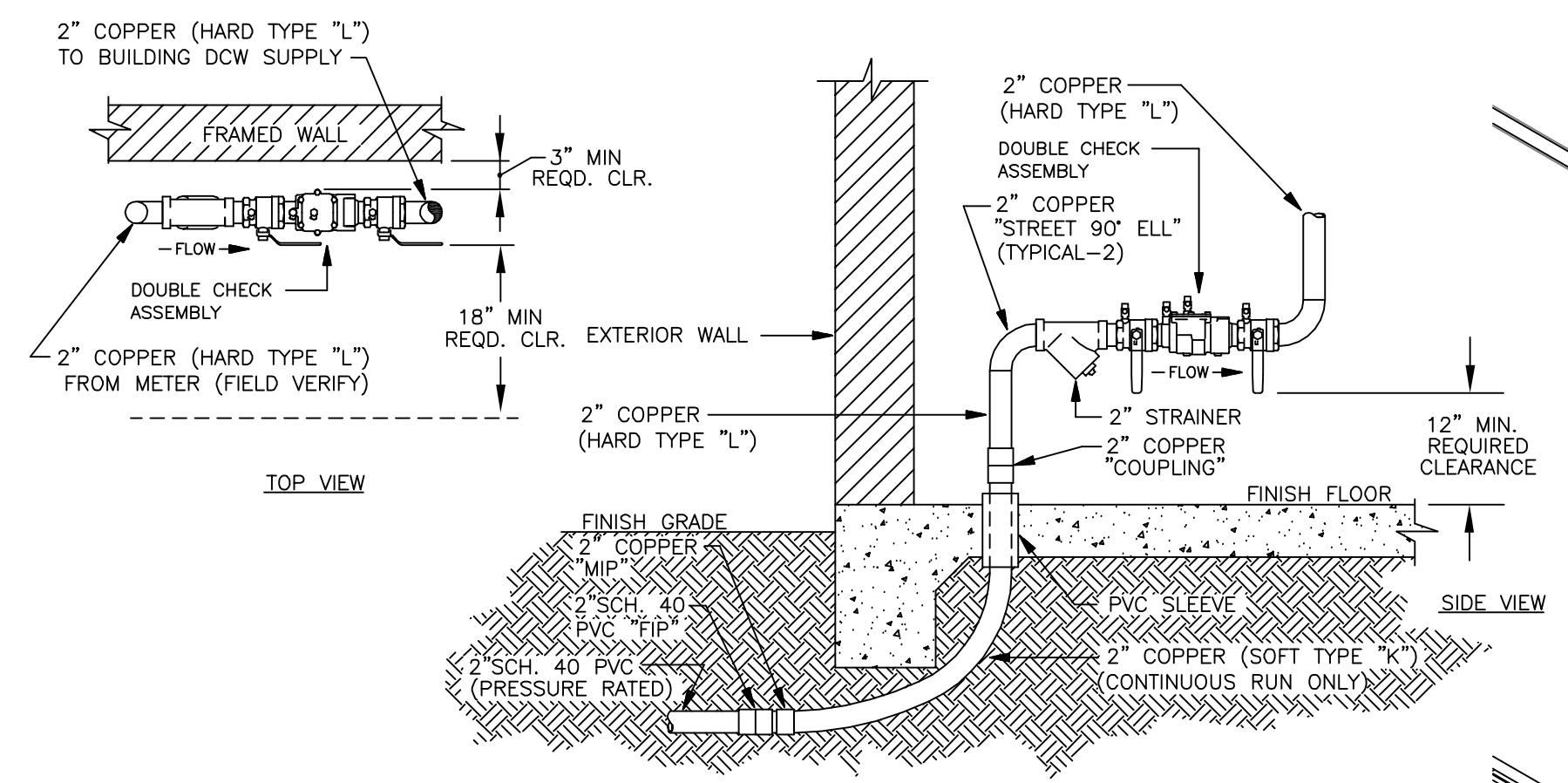


2 ROOFTOP PIPE SUPPORT DETAIL
M3 NOT TO SCALE

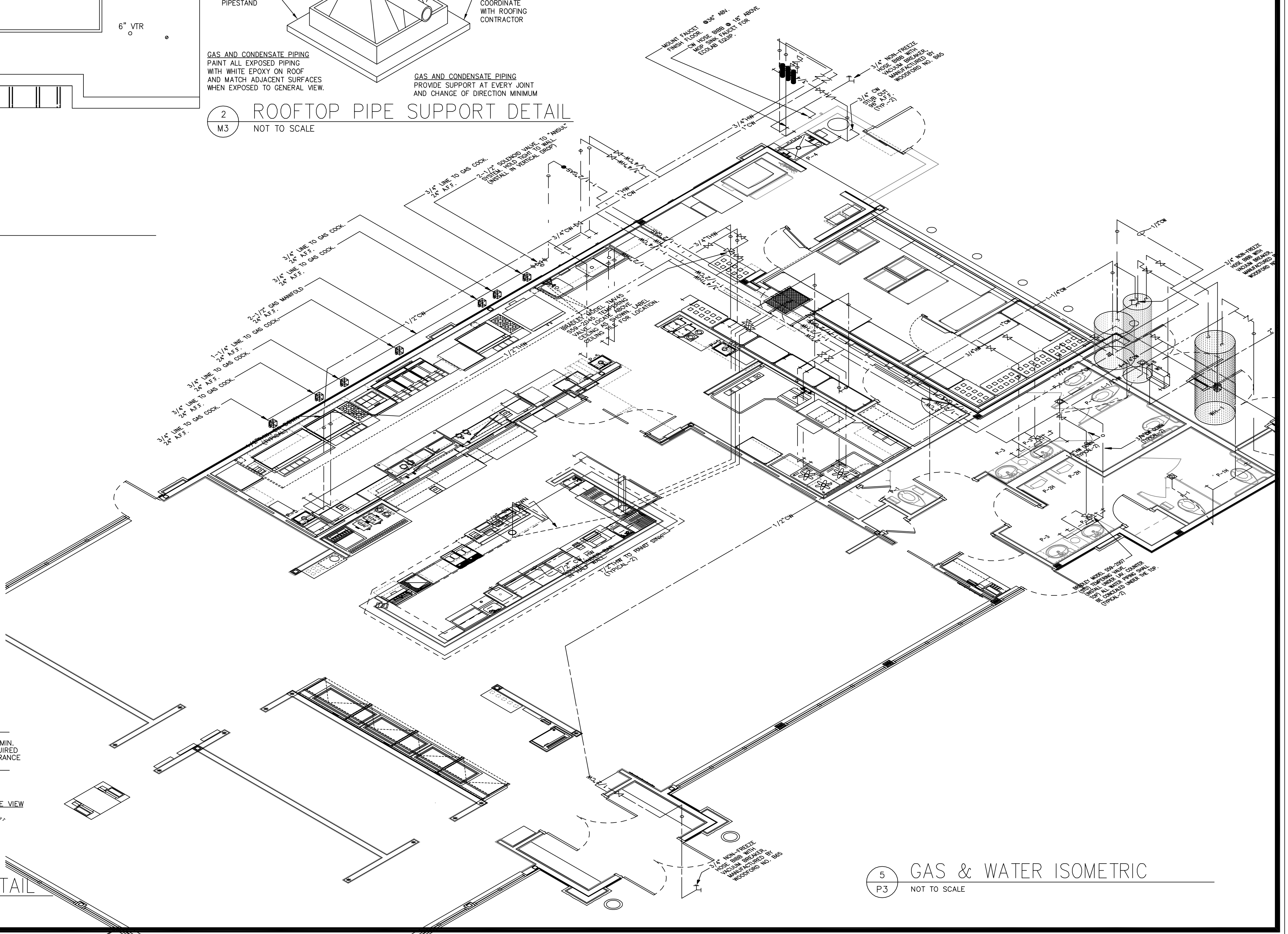
3 PLUMBING ROOF PLAN
P3 SCALE: 1/8" = 1'-0"



1 RTU GAS PIPING DETAIL
M3 NOT TO SCALE

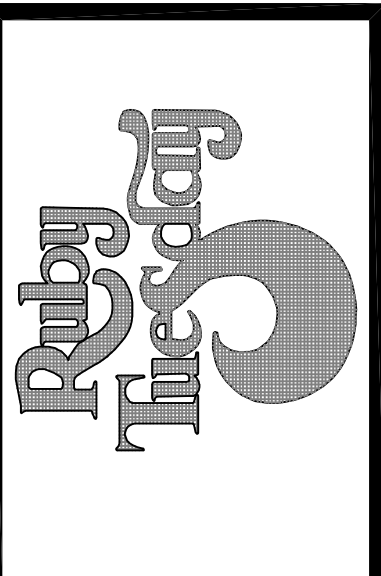


4 MECHANICAL ROOM WATER SERVICE ENTRANCE DETAIL
P3 NOT TO SCALE



5 GAS & WATER ISOMETRIC
P3 NOT TO SCALE

MARK	REVISION	DATE
1	DW/BOOSTER HEATER	9/29/05



Kurzynske & Associates
625 Third Avenue, South
Nashville, TN 37203
(615) 255-5203

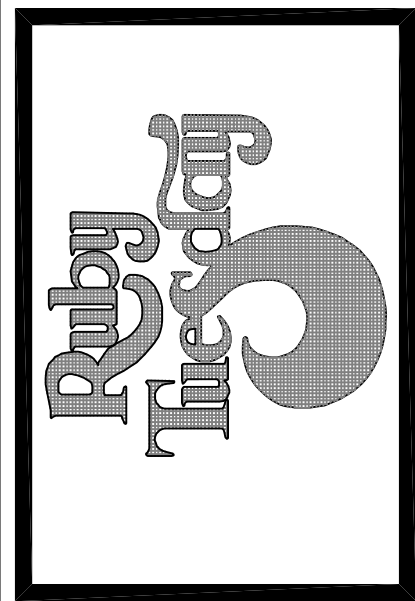
ENGINEER

SEAL OF LOUISIANA
William A. Kurzynske
Professional Engineer
License No. 28827
State of Louisiana
Use: MECHANICAL ENGINEER

PLUMBING GAS AND WATER ISOMETRIC
RUBY TUESDAY # 47
I-10E SERVICE ROAD at TYLER DRIVE (1-10 at SLIDELL)

K&A PROJECT NUMBER RT0522
ISSUE FOR REVIEW JULY 22, 2005
ISSUE FOR CONSTRUCTION
CHECKED BY
SCALE
SHEET NUMBER P-3

MARK	REVISION	DATE
1	DW/BOOSTER HEATER	9/29/05



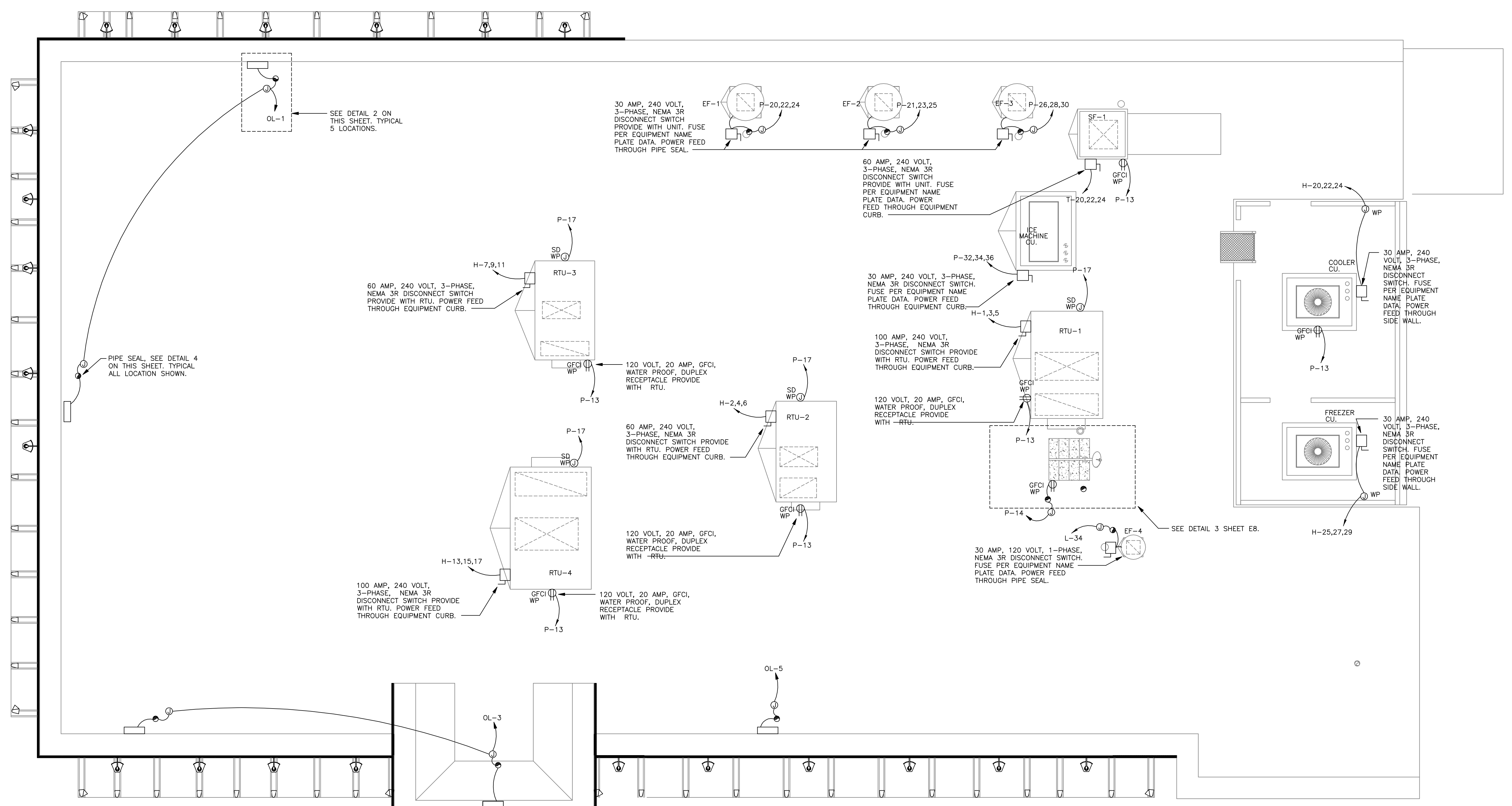
Kurzynske & Associates
 825 Third Avenue, South
 Nashville, TN 37203
 (615) 255-5203

SEAL *[Signature]*
 License No. 2887
 ELECTRICAL ENGINEER
 MISSISSIPPI

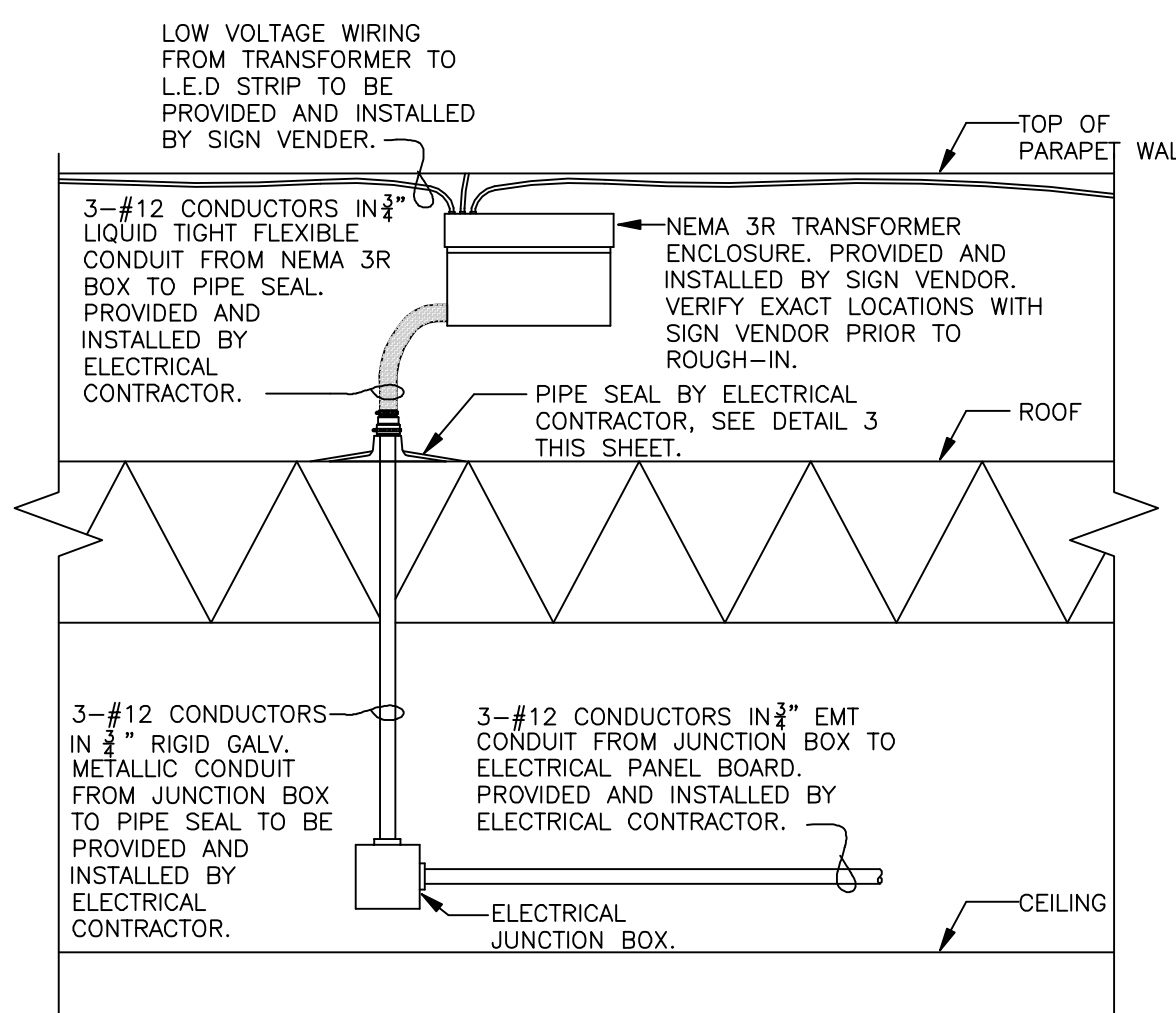
EL. ROOF POWER PLAN
 RUBY TUESDAY # 47
 1-10E SERVICE ROAD at TYLER DRIVE (1-10 at SLIDELL)

K&A PROJECT NUMBER
 RT0522
 ISSUE FOR REVIEW
 JULY 22, 2005
 ISSUE FOR CONSTRUCTION

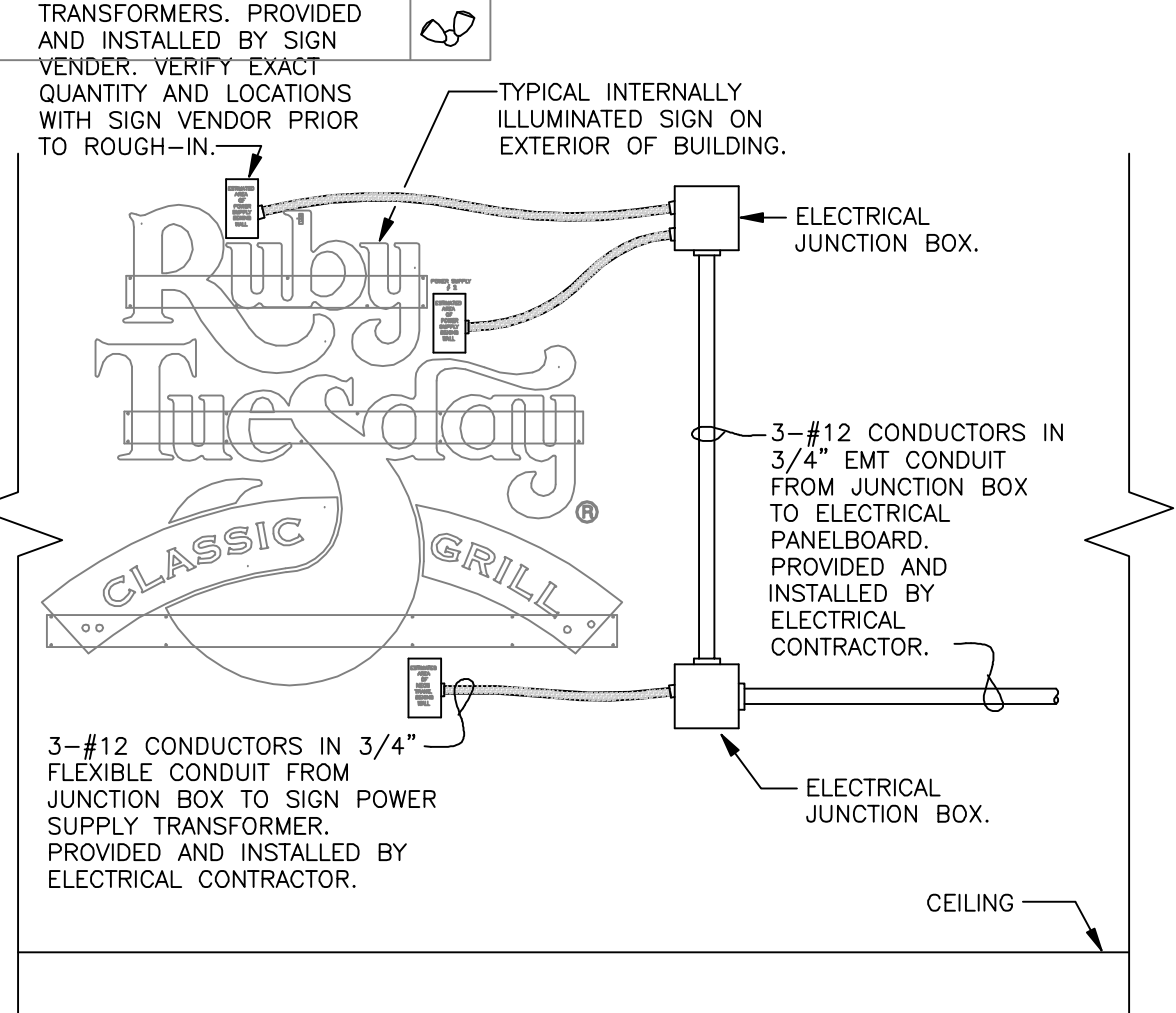
CHECKED BY _____
 SCALE
 AS NOTED
 SHEET NUMBER
 E-5



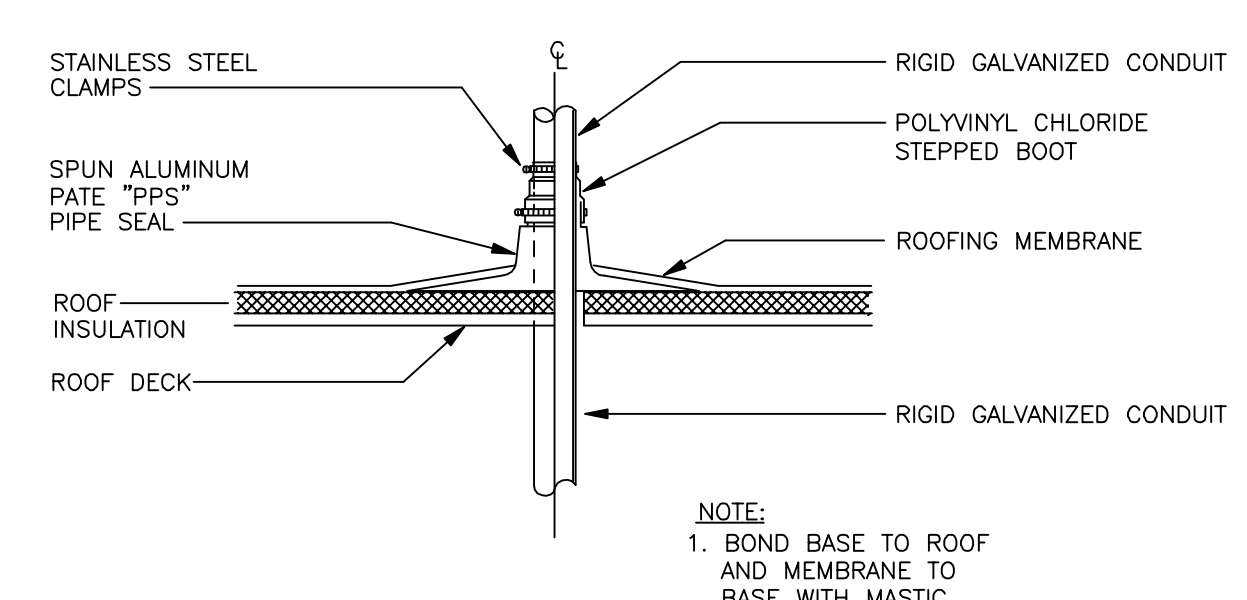
1 ROOF POWER PLAN
 SCALE: 1/4" = 1'-0"



2 TYPICAL L.E.D STRIPE WIRING DETAIL
 NOT TO SCALE



3 TYPICAL LIGHTED SIGN WIRING DETAIL
 NOT TO SCALE

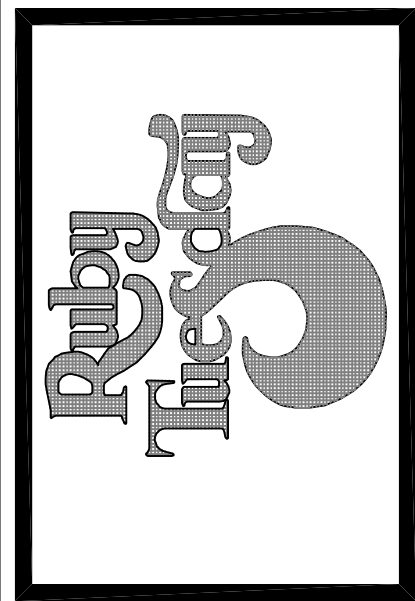


4 PIPE SEAL DETAIL
 NOT TO SCALE

- ALL JUNCTION BOXES FOR L.E.D SHALL BE INSTALLED AS INDICATED ON PLAN. ELECTRICIAN SHALL BE RESPONSIBLE FOR HOMERUNS TO PANEL FROM JUNCTION BOX AND FOR CONDUIT & WIRE TO TRANSFORMER.
- SIGN CONTRACTOR SHALL MAKE CONNECTIONS AT TRANSFORMER AND SHALL PROVIDE AND INSTALL TRANSFORMER, L.E.D STRIPES, SIGN CHANNEL LETTER, AND ALL WIRING FROM TRANSFORMER TO L.E.D STRIPING AND SIGNS.
- ELECTRICAL CONTRACTOR IS RESPONSIBLE FOR THE FINAL HOOKUP FOR ALL OWNER SUPPLIED SIGNAGE AND L.E.D STRIPES.
- ALL SIGNAGE TO BE MOUNTED ON 1" STANDOFF STRAPS.
- RUN ALL CONDUIT CONCEALED AND STUB THROUGH WALL FOR SIGNS AND L.E.D TUBING. J-BOXES SHOWN ARE APPROXIMATE LOCATIONS. COORDINATE WITH ARCHITECTURAL ELEVATIONS AND SIGN VENDORS.
- THE GENERAL CONTRACTOR IS RESPONSIBLE TO COORDINATE WITH OWNERS SIGN VENDOR FOR THE INSTALLATION OF THE BUILDING AND SITE SIGNAGE. DUE TO THE ARCHITECTURAL FINISHES ON THE INTERIOR OF THE BUILDING THERE IS NOT AN AREA THAT ALLOWS ACCESS TO THE WALL CAVITY. THE INSTALLATION OF THIS SIGN REQUIRES CHASING ELECTRICAL LINES BETWEEN SOME LETTERS AND TO TRANSFORMERS HOUSED IN THE ATTIC AREA. IT WILL BE NECESSARY TO COORDINATE THE SIGN INSTALLATION WITH OWNERS SIGN VENDOR TO LOCATE ALL WIRING NECESSARY TO POWER THIS SIGN.

5 SIGNAGE & L.E.D NOTES
 NOT TO SCALE

MARK	REVISION	DATE
1	DW BOOSTER HEATER	9/29/05



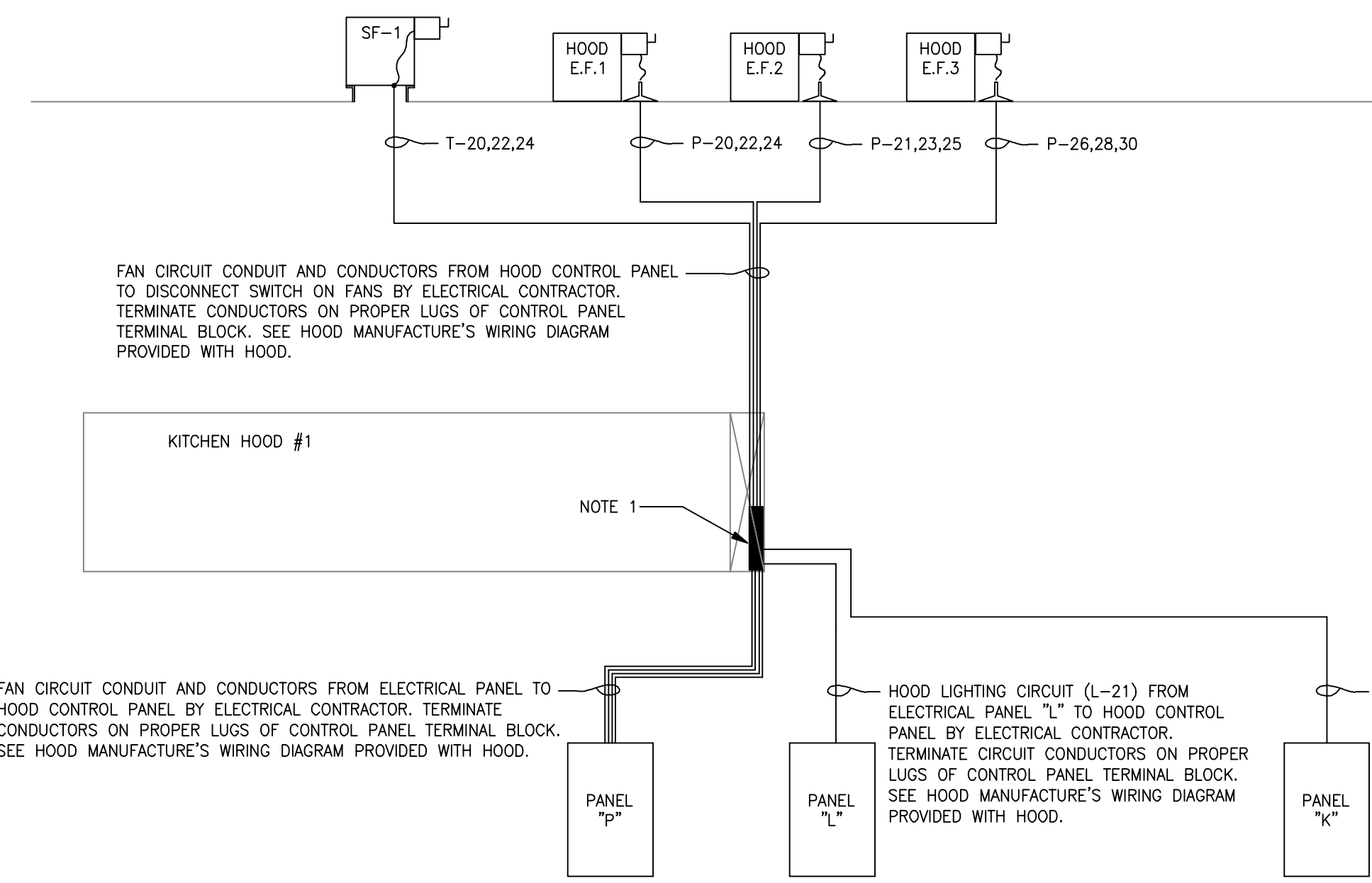
Kurzynske & Associates
 625 Third Avenue, South
 Nashville, TN 37203
 (615) 255-5203

SEAL OF LOUISIANA
 License No. 2887
 License No. 2887
 License No. 2887

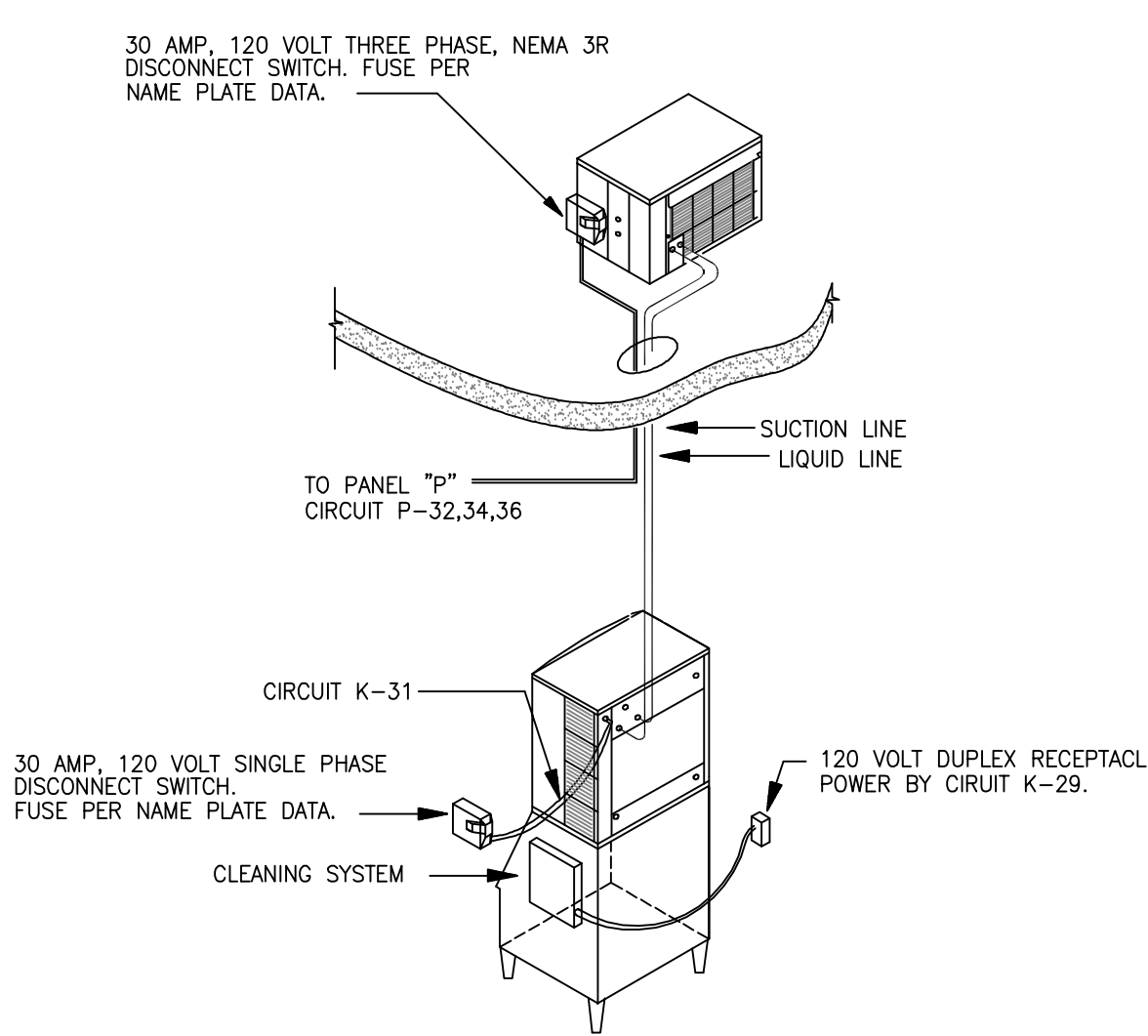
EL RISER DIAGRAM & DETAILS
 RUBY TUESDAY # 47
 1-10E SERVICE ROAD at TYLER DRIVE (1-10 at SLIDELL)

K&A PROJECT NUMBER
 RT0522
 ISSUE FOR REVIEW
 JULY 22, 2005
 ISSUE FOR CONSTRUCTION

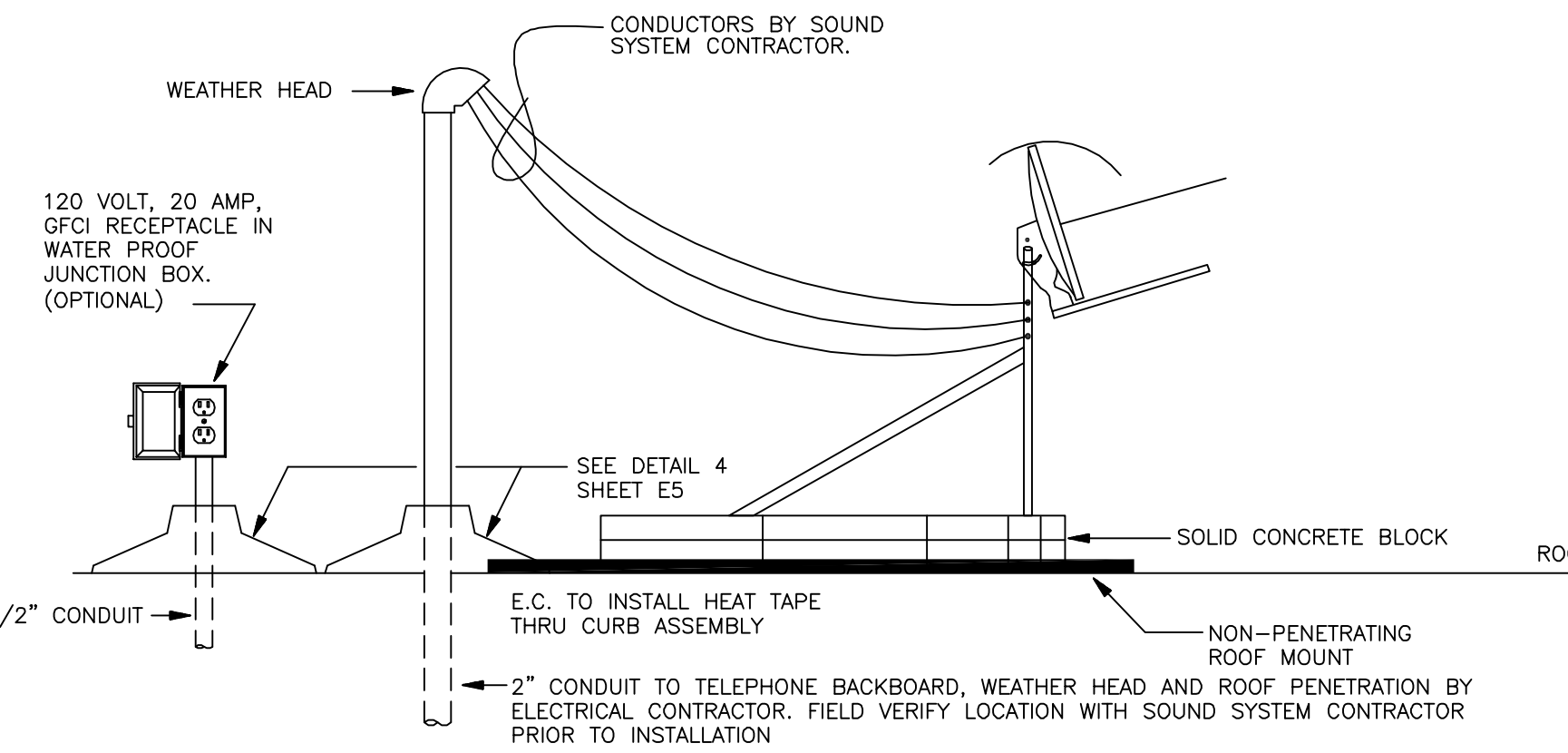
CHECKED BY
 SCALE
 AS NOTED
 SHEET NUMBER
 E-8



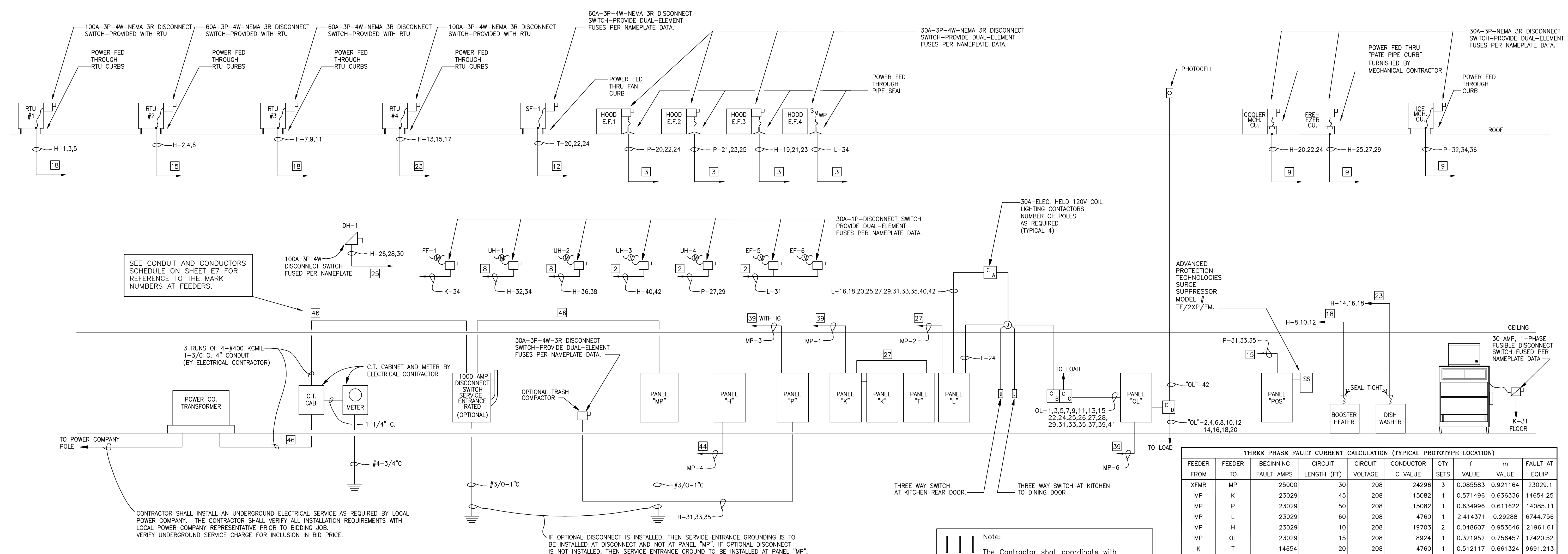
1 HOOD WIRING DIAGRAM
 NOT TO SCALE



2 ICE MACHINE DETAIL
 NOT TO SCALE



3 SATELLITE DETAIL
 NOT TO SCALE



4 ELECTRICAL RISER DIAGRAM
 NOT TO SCALE

Note:
 The Contractor shall coordinate with the local Utility Company and with the Owner's representative for the location of the meter and CT cabinet. It is desired to not have these items mounted to the building. If the meter and CTs can be located at the transformer, the Contractor shall obtain written approval from the Owner's representative to make the change. Base Bid shall be as shown on the Riser.

THREE PHASE FAULT CURRENT CALCULATION (TYPICAL PROTOTYPE LOCATION)

FEEDER FROM	FEEDER TO	BEGINNING FAULT AMPS	CIRCUIT LENGTH (FT)	CIRCUIT VOLTAGE	CONDUCTOR C VALUE	QTY	f VALUE	m VALUE	FAULT AT EQUIP
XFMR	MP	25000	30	208	24296	3	0.085583	0.921164	23029.1
MP	K	23029	45	208	15082	1	0.571496	0.636336	14654.25
MP	P	23029	50	208	15082	1	0.634996	0.611622	14085.11
MP	L	23029	60	208	4760	1	2.414371	0.29288	6744.756
MP	H	23029	10	208	19703	2	0.048607	0.953646	21961.61
MP	OL	23029	15	208	8924	1	0.321952	0.756457	17420.52
K	T	14654	20	208	4760	1	0.512117	0.661324	9691.213
P	POS	14085	25	208	1557	1	1.881025	0.347099	4888.925

NOTE:
 THE CONTRACTOR SHALL VERIFY WITH THE LOCAL POWER UTILITY COMPANY THE FAULT CURRENT AVAILABLE AT THE POWER COMPANY'S TRANSFORMER. IF THE AVAILABLE FAULT CURRENT IS HIGHER THAN 25000 A, THE CONTRACTOR SHALL CONTACT THE PROJECT'S DESIGN ENGINEER FOR A REVISED FAULT CURRENT CALCULATION AND THE PANEL RATINGS WILL BE REVISED FOR THE ACTUAL FAULT CURRENT.

PANELBOARD SCHEDULE												
PANELBOARD DESCRIPTION				BREAKER OPTIONS				LOADS				
PANELBOARD NAME: MP				SWITCH RATED: SW				KVA PHASE A 109				
MANUFACTURER / TYPE: SO-D / 1-LINE				ISOLATED GROUND: IG				KVA PHASE B 106				
VOLTS: 208 / 120				GROUND FAULT: GF				KVA PHASE C 95.6				
PHASE / WIRE: 3 / 4				HACR: HA				AMPS PHASE A 308				
MAIN TYPE / CU BUS AMPS: MLO / 1000 AMP				SHUNT TRIP: ST				AMPS PHASE B 887				
AIC RATING: 65000				LOCK-ON: LO				AMPS PHASE C 797				
MOUNTING: SURFACE				NOTES: KVA CONNECTED 311				KVA DIVERSIFIED 290				
NEMA RATING: 3R				THE SERVICE IS PER THE				AMPS CONNECTED 863				
QUANTITY OF SECTIONS: 1				NEC RULE FOR SIX MAIN				AMPS DIVERSIFIED 805				
				DISCONNECTS:								
CIR NO.	LOAD DESCRIPTION	LOAD TYPE	LOAD KVA	CIR BKR	PH	CIR BKR	LOAD KVA	LOAD TYPE	LOAD DESCRIPTION	CIR NO.		
1	PANEL "K"	R	23.92	225/3	A	100/3	6.0B		PANEL "L"	2		
	(SUB-FEEDS "T")		25.44		B		7.31					
			18.99		C		6.85					
3	PANEL "P"	R	9.95	225/3	A	600/3	51.83		PANEL "H"	4		
	(SUB-FEEDS "POS")		9.18		B		50.33					
			7.48		C		50.33					
5	SPACE			X/3	A	225/3	17.15		PANEL "OL"	6		
					B		14.23					
					C		11.94					
*A/P/O INDICATES CIRCUIT BREAKER AMPACITY/NO. POLES/OPTIONS WITH OPTIONS AS NECESSARY												
LOAD SUMMARY												
LOAD DESCRIPTION	TYPE	(KVA) X	(DEMAND FACTOR)					=	DIVERSIFIED KVA			
LIGHTING	L	32.100	1.25					=	40.125			
EGRESS LIGHTING	EL	0.200	1.25					=	0.250			
RECEPTACLES	R	10.260	PER(>10KVA@50%)					=	10.130			
MISCELLANEOUS	MS	10.830	1.25					=	13.663			
HVAC	HV	68.400	1					=	68.400			
HEAT	HT	38.999	1					=	38.999			
SINGLE PHASE MOTOR	M1	1.864	1.25					=	2.330			
THREE PHASE MOTOR	M3	10.728	1.25					=	13.410			
KITCHEN	K	115.126	0.65					=	74.832			
SIGNAGE	CH	22.400	1.25					=	28.000			
TOTAL		311.007						=	290.138			
OPTIONAL EQUIPMENT	X	0.000	1					=	0.000			
OPTIONAL TOTAL		311.007						=	290.138			

PANELBOARD SCHEDULE												
PANELBOARD DESCRIPTION				BREAKER OPTIONS				LOADS				
PANELBOARD NAME: P				SWITCH RATED: SW				KVA PHASE A 9.95				
MANUFACTURER / TYPE: SO-D / NOOD				ISOLATED GROUND: IG				KVA PHASE B 9.18				
VOLTS: 208 / 120				GROUND FAULT: GF				KVA PHASE C 7.48				
PHASE / WIRE: 3 / 4 W/IG				HACR: HA				AMPS PHASE A 82.9				
MAIN TYPE / CU BUS AMPS: MLO / 225 AMP				SHUNT TRIP: ST				AMPS PHASE B 76.5				
AIC RATING: 22000				LOCK-ON: LO				AMPS PHASE C 62.3				
MOUNTING: SURFACE				NOTES: KVA CONNECTED 26.6				KVA DIVERSIFIED 26.6				
NEMA RATING: 3R				WITH IG BAR FOR				AMPS CONNECTED 73.8				
QUANTITY OF SECTIONS: 1				PANEL-POS				AMPS DIVERSIFIED 73.8				
CIR NO.	LOAD DESCRIPTION	LOAD TYPE	LOAD KVA	CIR BKR	PH	CIR BKR	LOAD KVA	LOAD TYPE	LOAD DESCRIPTION	CIR NO.		
1	DINING RV OUTLETS	R	1.08	20/1	A	20/1	0.54	R	DINING TV OUTLETS	2		
3	TV OUTLETS	R	0.54	20/1	B	20/1	0.36	R	OFFICE OUTLETS	4		
5	OFFICE OUTLETS	R	0.36	20/1	C	20/1	0.18	R	OFFICE OUTLETS	6		
7	OFFICE OUTLETS	R	0.18	20/1	A	20/1	1.08	MS	OFFICE PLUGMOLD	8		
9	OFFICE PLUGMOLD	R	1.08	20/1	B	20/1	0.20	MS	DOORBELL	10		
11	SPARE			20/1	C	20/1	0.18	R	SPARE	12		
13	ROOF OUTLETS	R	1.08	20/1	A	20/1	0.18	R	SATELITE RECEPTACLE	14		
15	SAFE POWER	MS	0.14	20/1	B	20/1	0.18	R	CAMERA POWER SUP.	16		
17	SMOKE DETECTORS	MS	0.90	20/1/LO	C	20/1		R	SPARE	18		
19	ARM-A-DOOR SYSTEM	MS	0.77	20/1	A	15/3	0.49	M3	EF-1 (1 HP)	20		
21	EF-2 (1 HP)	M3	0.49	15/3	B		0.49	M3	SPARE	22		
23	SPARE	M3	0.49		C		0.49	M3	SPARE	24		
25	UH-4	HT	1.00	20/2	B		0.49	M3	EF-3 (1 HP)	26		
27	UH-4	HT	1.00	20/2	A		0.49	M3	SPARE	28		
29	POS PANEL	HT	1.26	50/3	A	30/3	2.30	K	ICE MACHINE	30		
31	SPARE		1.90		B		2.30	K	CONDENSER	32		
33	SPARE		1.26		C		2.30	K	SPARE	34		
35	SPARE			20/1	A	20/1			SPARE	36		
37	SPARE			20/1	B	20/1			SPARE	38		
39	SPARE			20/1	C	20/1			SPARE	40		
41	SPARE			20/1	A	20/1			SPARE	42		
*A/P/O INDICATES CIRCUIT BREAKER AMPACITY/NO. POLES/OPTIONS WITH OPTIONS AS NECESSARY												
LOAD SUMMARY												
LOAD DESCRIPTION	TYPE	(KVA) X	(DEMAND FACTOR)					=	DIVERSIFIED KVA			
RECEPTACLES	R	9.180	PER(>10KVA@50%)					=	9.180			
MISCELLANEOUS	MS	4.090	1					=	4.090			
HEAT	HT	2.000	1					=	2.000			
SINGLE PHASE MOTOR	M1	0.000	1					=	0.000			
THREE PHASE MOTOR	M3	4.428	1					=	4.428			
KITCHEN	K	6.900	1					=	6.900			
TOTAL		26.598						=	26.598			

PANELBOARD SCHEDULE												
PANELBOARD DESCRIPTION				BREAKER OPTIONS				LOADS				
PANELBOARD NAME: POS				SWITCH RATED: SW				KVA PHASE A 1.26				
MANUFACTURER / TYPE: SO-D / NOOD				ISOLATED GROUND: IG				KVA PHASE B 1.9				
VOLTS: 208 / 120				GROUND FAULT: GF				KVA PHASE C 1.26				
PHASE / WIRE: 3 / 4 W/IG				HACR: HA				AMPS PHASE A 10.5				
MAIN TYPE / CU BUS AMPS: MLO / 100 AMP				SHUNT TRIP: ST				AMPS PHASE B 15.8				
AIC RATING: 10000				LOCK-ON: LO				AMPS PHASE C 10.5				
MOUNTING: FLUSH				NOTES: KVA CONNECTED 4.42				KVA DIVERSIFIED 4.42				
NEMA RATING: 3R				PROVIDE W/IG BAR				AMPS CONNECTED 12.3				
QUANTITY OF SECTIONS: 1								AMPS DIVERSIFIED 12.3				
CIR NO.	LOAD DESCRIPTION	LOAD TYPE	LOAD KVA	CIR BKR	PH	CIR BKR	LOAD KVA	LOAD TYPE	LOAD DESCRIPTION	CIR NO.		
1	TERMINAL #1	R	0.18	20/1/IG	A	20/1/IG	0.36	R	TERMINAL #2	2		
3	TERMINAL #3	R	0.18	20/1/IG	B	20/1/IG	0.36	R	BAR POS #1/PRINTER	4		
5	TERMINAL #5	R	0.18	20/1/IG	C	20/1/IG	0.36	R	TERMINAL #6	6		
7	REMOTE PRINTERS	R	0.18	20/1/IG	A	30/3		R	TVSS SURGE	8		
9	UPS-COMPUTER	MS	1.00	20/1/IG	B				SUPPRESSOR	10		
11	REMOTE PRINTERS	R	0.36	20/1	C				SPARE	12		
13	TELEPHONE B-BOARD	R	0.36	20/1/IG	A	20/1			SPARE	14		
15	TELEPHONE B-BOARD	R	0.36	20/1/IG	B	20/1			SPARE	16		
17	TELEPHONE B-BOARD	R	0.36	20/1/IG	C	20/1			SPARE	18		
19	SAFE OUTLET	R	0.18	20/1	A	20/1			SPARE	20		
21	SPARE			20/1	B	20/1			SPARE	22		
23	SPARE			20/1	C	20/1			SPARE	24		
*A/P/O INDICATES CIRCUIT BREAKER AMPACITY/NO. POLES/OPTIONS WITH OPTIONS AS NECESSARY												
LOAD SUMMARY												
LOAD DESCRIPTION	TYPE	(KVA) X	(DEMAND FACTOR)					=	DIVERSIFIED KVA			
RECEPTACLES	R	3.420	PER(>10KVA@50%)					=	3.420			
MISCELLANEOUS	MS	1.000	1					=	1.000			
TOTAL		4.420						=	4.420			

PANELBOARD SCHEDULE											
PANELBOARD DESCRIPTION				BREAKER OPTIONS				LOADS			
PANELBOARD NAME: K				SWITCH RATED: SW				KVA PHASE A 23.9			
MANUFACTURER / TYPE: SO-D / NOOD				ISOLATED GROUND: IG				KVA PHASE B 25.4			
VOLTS: 208 / 120				GROUND FAULT: GF				KVA PHASE C 19			
PHASE / WIRE: 3 / 4				HACR: HA				AMPS PHASE A 199			
MAIN TYPE / CU BUS AMPS: MLO / 225 AMP				SHUNT TRIP: ST				AMPS PHASE B 212			
AIC RATING: 22000				LOCK-ON: LO				AMPS PHASE C 158			
MOUNTING: RECESSED				NOTES: KVA CONNECTED 68.3				KVA DIVERSIFIED 48			
NEMA RATING: 3R								AMPS CONNECTED 193			
QUANTITY OF SECTIONS: 1								AMPS DIVERSIFIED 133			
CIR NO.	LOAD DESCRIPTION	LOAD TYPE	LOAD KVA	CIR BKR	PH	CIR BKR	LOAD KVA	LOAD TYPE	LOAD DESCRIPTION	CIR NO.	
1	REFRIGERATOR	R	3210	K	1.32	20/1	A	20/1	1.20	K	
3	BEER PUMP	R	3313	K	0.83	20/1	B	20/1	1.30	K	
5	CREAM FREEZER	R	3202	K	0.34	20/1	C	20/2	1.80	K	
7	FLUID WARMER	R	3192	K	1.59	20/1	A	20/1	1.80	K	
9	FOOD WARMER	R	3172	K	0.50	20/1	B	20/2	1.10	K	
11	MW OVEN	R	3183	K	1.10	20/2	C		1.10	K	
13	MW OVEN	R	3183	K	1.10	20/2	A	20/2	1.40	K	
15	FOOD WARMER	R	3172	K	1.10	20/1	B	20/1	0.75	K	
17	FOOD WARMER	R	3172	K	1.10	20/1	A	20/1	0.75	K	
19	HEAT LAMPS	R	3176	K	1.40	20/2	B	20/1	0.50	K	
21	HEAT LAMPS	R	3176	K	1.40	20/2	A	20/2	1.10	K	
23	MW OVEN	R	3183	K	1.10	20/2	A		1.10	K	
25	MW OVEN	R	3183	K	1.10	20/2	B	20/1	1.78	K	
27	ICE M. CLEANER	R	3402	K	0.20	20/1	C	20/1	1.78	K	
29	ICE M. CUBER	R	3402	K	0.13	20/1	A	20/1	1.78	K	
31	REF. PREP TABLE	R	3260	K	0.50	20/1	B	20/1	1.20	MS	
33	ROLL WARMER	R	3174	K	0.45	20/1	C	ST		MS	
35	FOOD WARMER	R	3172	K	0.50	20/1	A	100/3	7.68	MS	
37	REFRIGERATOR	R	3212	K	0.50	20/1	B		9.66	MS	
39	REFRIGERATOR	R	3212	K	0.50	20/1	A		5.62	MS	
41	BEVERAGE TOWER	R	3405	K	0.20	20/1	C	A	20/1	0.20	
43	FROZEN DRINK	R	3550	K	0.77	20/1	B	20/1	0.50	K	
45	BAR COOLER	R	3505	K	0.77	20/1	C	20/1	0.52	K	
47	MUG CHILLER	R	3531	K	0.79	20/1	A	20/1	0.59	K	
49	WATER SOFTENER	MS	0.10	20/1	B	20/1	0.60	MS	WATER HEATER	50	
51	IRIGATION CONTROL	MS	0.10	20/1	C	20/1	0.60	MS	WATER HEATER	54	
53	BAR MW OVEN	R	3405	K	1.10	20/1	A	20/1	0.60	MS	
55	BUG ZAPPER	R	0.20	20/1	B	20/1	0.20	MS	BUG ZAPPER	56	
57	BAR RECEPT.	R	0.36	20/1	C	20/1			SPARE	58	
59	BAR RECEPT.	R	0.36	20/1	A	20/1			SPARE	60	
61	TO GO FAX MACHINE	R	0.36	20/1	B	20/1			SPARE	62	
63	TO GO FAX MACHINE	R	0.36	20/1	C	20/1			SPARE	64	
65	SPARE			20/1	A	20/1			SPARE	66	
67	SPARE			20/1	B	20/1			SPARE	68	
69	SPARE			20/1	C	20/1			SPARE	70	
71	SPARE										