

# Slidell Memorial Hospital Imaging Center Front Entrance Renovation

## Sliding Automatic Entrances

Submittal # 08421-01  
 Project SMH Imaging Center Front Entrance Renovation  
 Shop Drwg. # 08421-01  
 Spec. Sec. # 08421  
 Vendor/Sub Stanley Access Technologies  
 Product Sliding Automatic Entrances

*M Natal Contractor, Inc.*

Reviewing is for conformance with the design concept of the project and compliance with the information given in the Contract Documents. The Vendor is responsible for dimensions to be confirmed and correlated at the site for information that pertains solely to the fabrication process or to the means, method, technician, sequences, and procedures of construction; and for coordination of the work with all trades.

No Objections   
 No Objection Except as Noted   
 Revise and Resubmit   
 Not Approved; Re-Submit

By: Patricia Shurden Date 06/15/2016  
 Patricia Shurden 06/15/2016

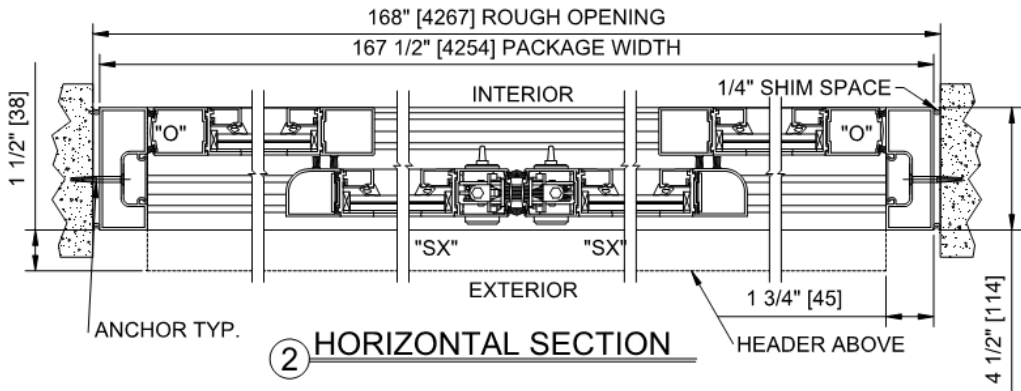
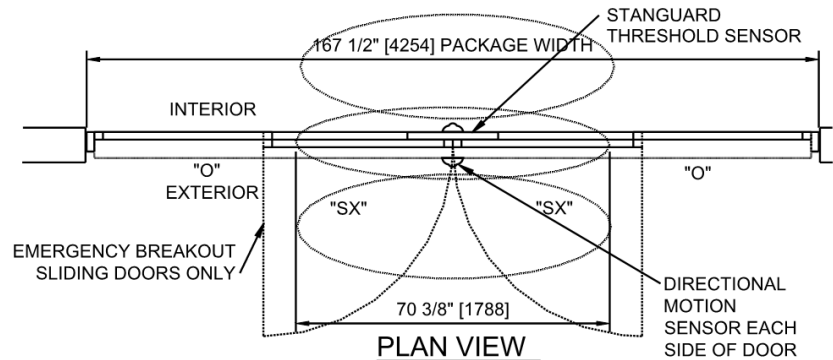
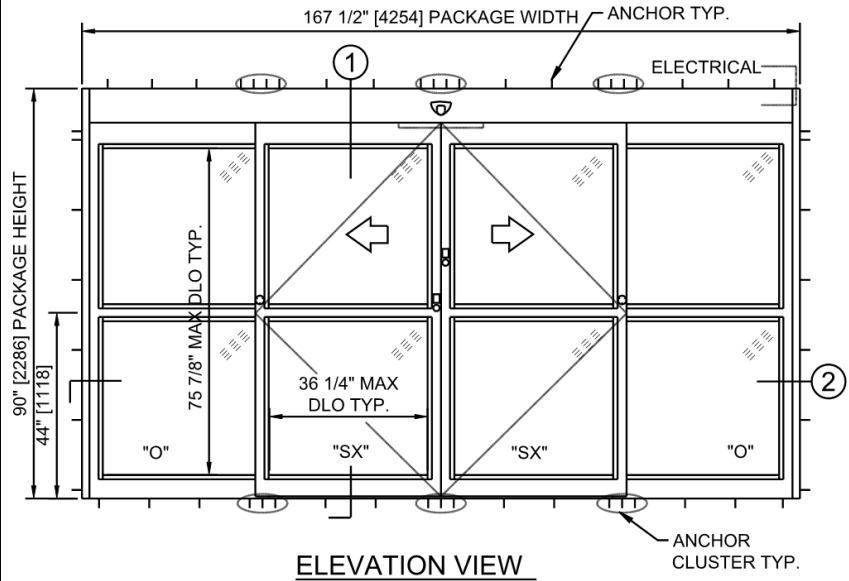
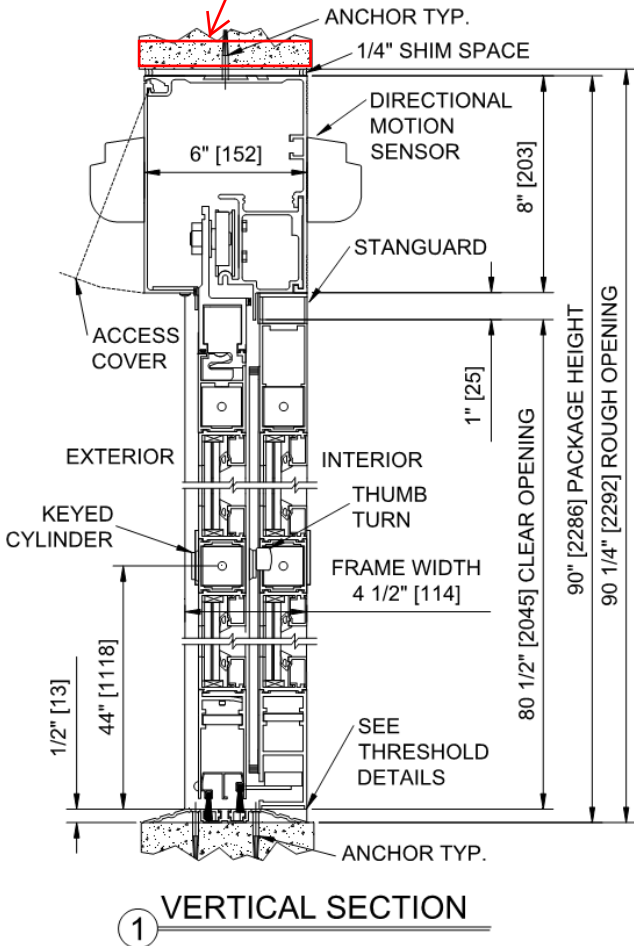
DAMMON ENGINEERING INC  
 Date: 6-16-16 Project: SMH SWIRKINS

Submittal Items  
 Reviewed as Noted   
 Revise and Resubmit   
 Rejected:   
 Other:

Corrections or comments made on the shop drawings during this review do not relieve the contractor from compliance with requirements of the drawings and specifications. This check is only for review of general conformance with the design concept of the project and general compliance with the information contained in the contract documents. This contractor is responsible for sequencing and correlating all quantities and dimensions selected in fabrication processes and techniques of construction. Coordinate this or other work with that of all other trades and performing all in a safe and satisfactory manner.

Submittal Item: EXTERIOR DOOR  
 Comments

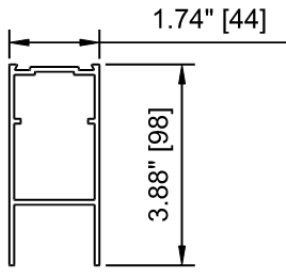
**3/16" Structural steel at head by others.**



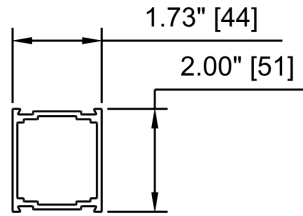
**STANLEY.**

Job Name : Slidell Imaging Center  
Location :  
Door Location : Exterior door 101A

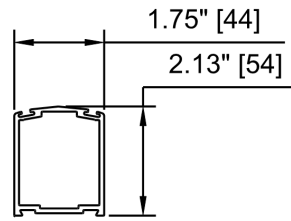
Job# : 24836  
Date: Jun 08 2016  
Product Qty : 1  
Product : DURASTORM 2000 BP-IMPACT



**BOTTOM RAIL, 4"**  
6063-T6

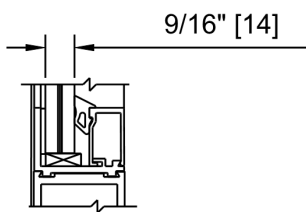


**MUNTIN BAR, 2"**  
6063-T6

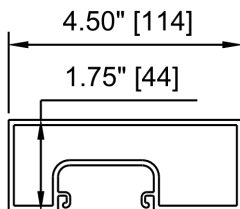


**STILE, NARROW**  
6063-T6

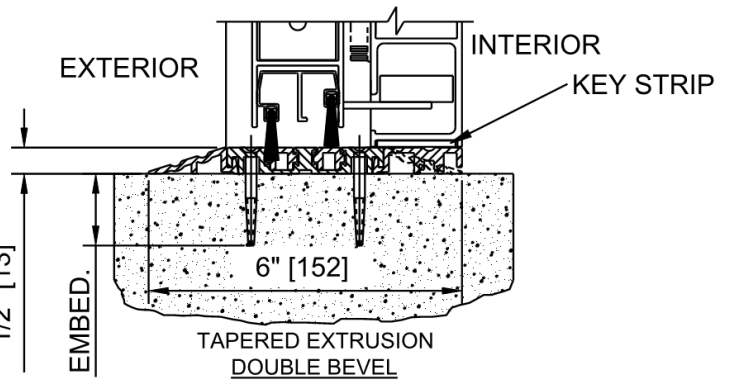
**TRANSOM VERTICAL section not selected in the package**



**PANEL GLAZING  
VERTICAL SECTION  
9/16" GLASS**



**JAMB, 4 1/2"**  
6063-T6



**THRESHOLD-TAPERED EXTRUSION  
4 1/2" FRAME  
(DOUBLE BEVEL THROUGHOUT DOOR OPENING)**



Job Name : Slidell Imaging Center  
 Location :  
 Door Location : Exterior door 101A

Job# : 24836 Date: Jun 08 2016  
 Product Qty : 1  
 Product : DURASTORM 2000 BP-IMPACT

**Door Details**

Package Width	Masonry/Rough Opening Width	Clear Door Opening Width	Emergency Breakout	Package Height	Rough Opening Height
167.5000"	168.0000"	70.3500"	77.6000"	90.0000"	90.2500"

Options	Inclusions/Exclusions
<p><b>Finish</b>            Door Package Color                      Special Finish, Black (Anodized)  <i>Bronze</i></p> <p><b>Locking / Access Control</b></p> <p><b>Options and Accessories</b>            Threshold Option                      Double Bevel 6" (Continuous)            Switch and Control Options            Dual Motors            Switch Type                                Rotary Switch - 6 Position</p> <p><b>Glass Specifications</b>            SX Glass Thickness                      0.5620"            O Glass Thickness                        0.5620"</p>	<p><b>Inclusions</b>            Door package installation.            Doors, frames &amp; associated hardware.            Caulking.</p> <p><b>Exclusions</b>            Painting, patching &amp; flooring work.            Preparation of rough opening.            Demolition of existing storefront.            120 volts AC to inside auto door header 5 amp min.            Subcontractor for storefront work.            Glass &amp; Glazing.            Break metal.            Delegated Design.            Permits &amp; inspections by others.            Exterior door must attach at jambs and head to a concrete, wood, minimum 3/16" steel, or minimum 1/8" wall thickness aluminum framed opening by others to adhere to the NOA. Stanley will provide NOA during submittals for specific attachment requirements.            Cleaning and protection of installed material.</p>

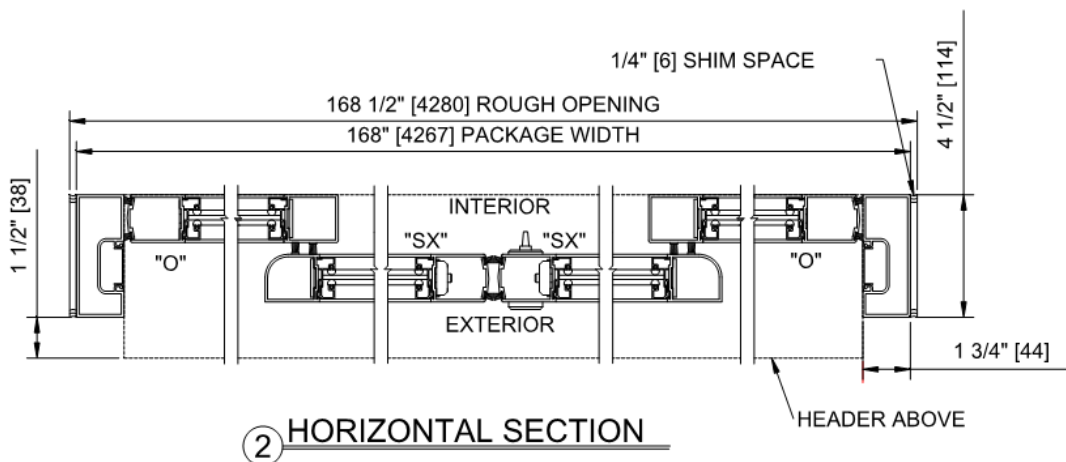
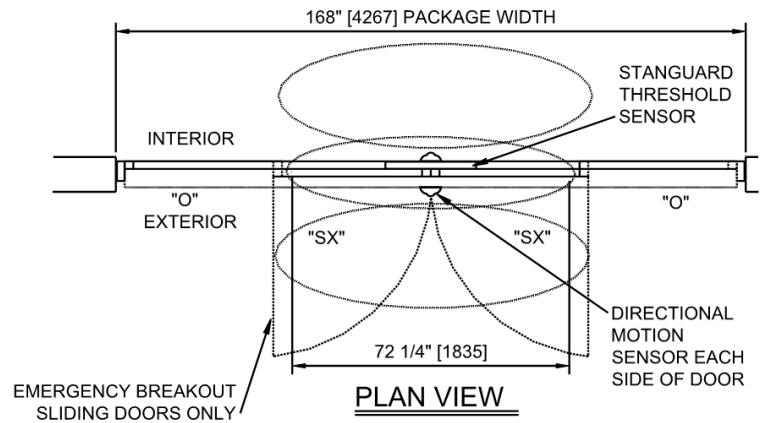
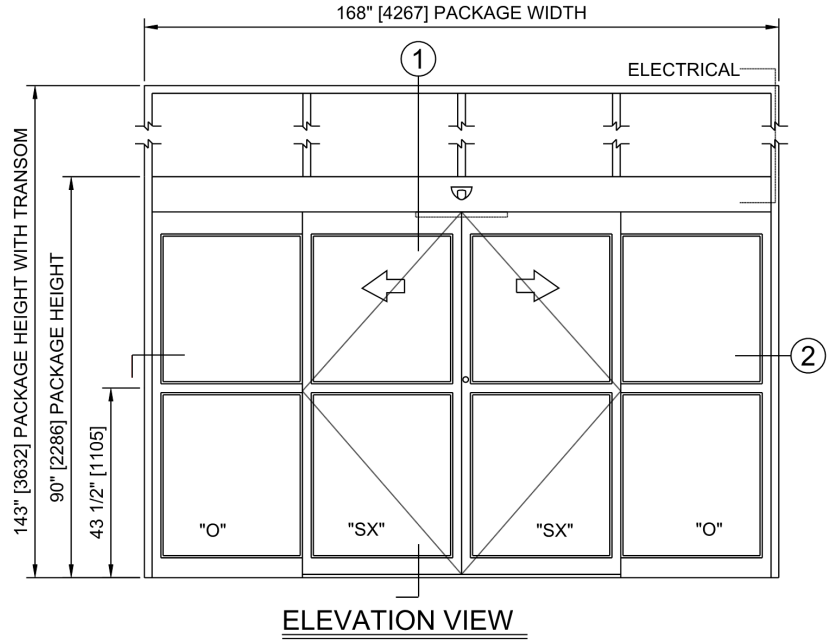
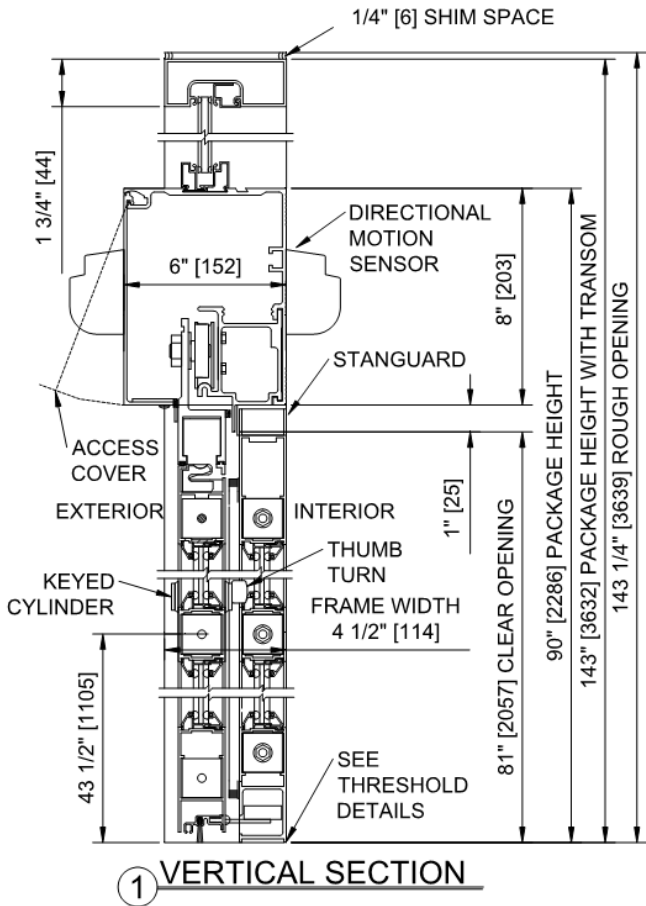
**Shop Drawing / Submittal Review**

Date: \_\_\_\_\_

- No Exceptions Taken     
  Furnish with Changes Noted     
  Review and Resubmit     
  Rejected

SUBMITTAL WAS REVIEWED FOR GENERAL CONFORMANCE TO THE CONTRACT DOCUMENTS. THE GENERAL CONTRACTOR IS RESPONSIBLE FOR CONFIRMING AND CORRELATING DIMENSIONS AT JOBSITE FOR TOLERANCE, CLEARANCE, QUANTITIES, FABRICATION, TECHNIQUES OF CONSTRUCTION, COORDINATION OF THIS WORK WITH THE WORK OF OTHER TRADES, AND FULL COMPLIANCE WITH THE CONTRACT DOCUMENTS.

By: \_\_\_\_\_ Company: \_\_\_\_\_

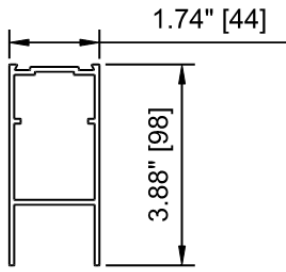


**STANLEY.**

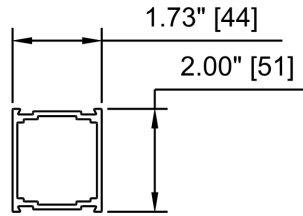
Job Name : Slidell Imaging Center  
Location :  
Door Location : Interior door 102A

Job# : 24836  
Product Qty : 1  
Product : DURAGLIDE 2000 BP

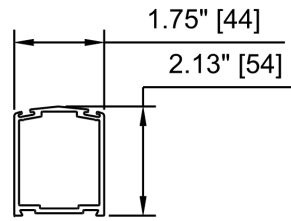
Date: Jun 08 2016



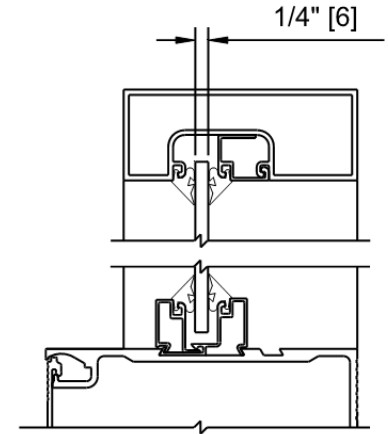
**BOTTOM RAIL, 4"**  
6063-T6



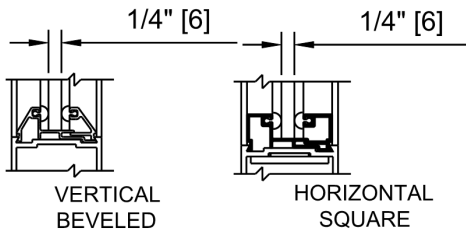
**MUNTIN BAR, 2"**  
6063-T6



**STILE, NARROW**  
6063-T6

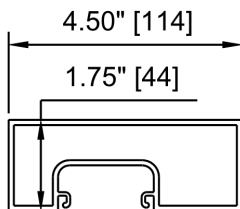


**TRANSOM  
VERTICAL SECTION  
1/4" GLASS**



**PANEL GLAZING  
SECTIONS  
1/4" GLASS**

**THRESHOLD section not selected in the package**



**JAMB, 4 1/2"**  
6063-T6



Job Name : Slidell Imaging Center  
 Location :  
 Door Location : Interior door 102A

Job# : 24836  
 Product Qty : 1  
 Product : DURAGLIDE 2000 BP

Date: Jun 08 2016

**Door Details**

Package Width	Masonry/Rough Opening Width	Clear Door Opening Width	Emergency Breakout	Package Height With Transom	Rough Opening Height With Transom
168.0000"	168.5000"	72.3020"	79.5520"	143.0000"	143.2500"

Options	Inclusions/Exclusions
<p><b>Finish</b>            Door Package Color                      Special Finish, Black (Anodized)</p> <p><b>Locking / Access Control</b>            Cylinder Options                              Standard            Lock Configuration                            Cylinder/Thumbturn Required            Lock Config Options                            Two Point Lock</p> <p><b>Options and Accessories</b>            Jamb Substitution                              No Substitution            Switch Type                                      Rotary Switch - 6 Position</p> <p><b>Glass Specifications</b>            Transom Glass Thickness                      0.2500"            SX Glass Thickness                              0.2500"            O Glass Thickness                                0.2500"</p>	<p><b>Inclusions</b>            Door package installation.            Doors, frames &amp; associated hardware.            Caulking.</p> <p><b>Exclusions</b>            Painting, patching &amp; flooring work.            Preparation of rough opening.            Demolition of existing storefront.            120 volts AC to inside auto door header 5 amp min.            Subcontractor for storefront work.            Glass &amp; Glazing.            Break metal.            Delegated Design.            Permits &amp; inspections by others.            Exterior door must attach at jambs and head to a concrete, wood, minimum 3/16" steel, or minimum 1/8" wall thickness aluminum framed opening by others to adhere to the NOA. Stanley will provide NOA during submittals for specific attachment requirements.            Cleaning and protection of installed material.</p>

**Shop Drawing / Submittal Review**

Date: \_\_\_\_\_

- No Exceptions Taken     
  Furnish with Changes Noted     
  Review and Resubmit     
  Rejected

SUBMITTAL WAS REVIEWED FOR GENERAL CONFORMANCE TO THE CONTRACT DOCUMENTS. THE GENERAL CONTRACTOR IS RESPONSIBLE FOR CONFIRMING AND CORRELATING DIMENSIONS AT JOBSITE FOR TOLERANCE, CLEARANCE, QUANTITIES, FABRICATION, TECHNIQUES OF CONSTRUCTION, COORDINATION OF THIS WORK WITH THE WORK OF OTHER TRADES, AND FULL COMPLIANCE WITH THE CONTRACT DOCUMENTS.

By: \_\_\_\_\_

Company: \_\_\_\_\_



MIAMI-DADE COUNTY  
 PRODUCT CONTROL SECTION  
 11805 SW 26 Street, Room 208  
 Miami, Florida 33175-2474  
 T (786) 315-2590 F (786) 315-2599  
[www.miamidade.gov/economy](http://www.miamidade.gov/economy)

DEPARTMENT OF REGULATORY AND ECONOMIC RESOURCES (RER)  
 BOARD AND CODE ADMINISTRATION DIVISION  
**NOTICE OF ACCEPTANCE (NOA)**

Stanley Access Technologies, LLC  
 65 Scott Swamp Road  
 Farmington, CT 06032

**SCOPE:**

This NOA is being issued under the applicable rules and regulations governing the use of construction materials. The documentation submitted has been reviewed and accepted by Miami-Dade County RER -Product Control Section to be used in Miami Dade County and other areas where allowed by the Authority Having Jurisdiction (AHJ).

This NOA shall not be valid after the expiration date stated below. The Miami-Dade County Product Control Section (in Miami Dade County) and/or the AHJ (in areas other than Miami Dade County) reserve the right to have this product or material tested for quality assurance purposes. If this product or material fails to perform in the accepted manner, the manufacturer will incur the expense of such testing and the AHJ may immediately revoke, modify, or suspend the use of such product or material within their jurisdiction. RER reserves the right to revoke this acceptance, if it is determined by Miami-Dade County Product Control Section that this product or material fails to meet the requirements of the applicable building code.

This product is approved as described herein, and has been designed to comply with the Florida Building Code, including the High Velocity Hurricane Zone.

**DESCRIPTION: Series "Dura Storm" Aluminum Automatic Sliding Glass Door : O-Sx-Sx-O, O-Sx and So-Sx-Sx-So, So-Sx w/ Operable Panels w/ Full Breakout-LMI**

**APPROVAL DOCUMENT:** Drawing No. 12-SAT-13, titled "Dura-Storm 2000/3000 Auto SGD, Bi-Parting/Single Slide-LMI", sheets 1 thru 12 of 12 prepared by Engineering Express, dated 07-01-12 and last revised on 10/22/2013, signed and sealed by Frank L. Bennardo, P.E., bearing the Miami-Dade County Product Control Approval stamp with the Notice of Acceptance number and approval date by the Miami-Dade County Product Control Section.

**MISSILE IMPACT RATING: Large and Small Missile Impact**

**LIMITATIONS:**

1. See elevation for anchors requirements in sheet 1 and Header clusters details in sheet 5 and Threshold clusters in sheet 9. See sheets 2 & 3 for concealed 3-point locking (active panel) & 2-point (in-active). Also see applicable 2-point G-86 CVR panic devices (active/inactive panels) for series 3000 in sheets 3 & 4 to be used w/ Horizontal muntin bars (detail V, sheet 12) and DLO height not to exceed 36-3/4" max.
2. Not approved where water infiltration is required. Fixed glass more than 36" wide must be supported with approved setting blocks per FBC requirements.
3. Electrical devices, functions and installation is not part of this approval and to be reviewed and approved by Authority Having Jurisdiction (AHJ)

**LABELING:** Each unit shall bear a permanent label with the manufacturer's name or logo, city, state and series and following statement: "Miami-Dade County Product Control Approved", noted herein.

**RENEWAL** of this NOA shall be considered after a renewal application has been filed and there has been no change in the applicable building code negatively affecting the performance of this product.

**TERMINATION** of this NOA will occur after the expiration date or if there has been a revision or change in the materials, use, and/or manufacture of the product or process. Misuse of this NOA as an endorsement of any product, for sales, advertising or any other purposes shall automatically terminate this NOA. Failure to comply with any section of this NOA shall be cause for termination and removal of NOA.

**ADVERTISEMENT:** The NOA number preceded by the words Miami-Dade County, Florida, and followed by the expiration date may be displayed in advertising literature. If any portion of the NOA is displayed, then it shall be done in its entirety.



NOA No. 13-0529.23  
 Expiration Date: April 04, 2018  
 Approval Date: October 31, 2013  
 Page 1 of 2

10/25/13

**INSPECTION:** A copy of this entire NOA shall be provided to the user by the manufacturer or its distributors and shall be available for inspection at the job site at the request of the Building Official.

This NOA revises NOA # 12-0807.03 consists of the pages 1& 2 and evidence pages E-1 & E-2, as well as approval document mentioned above.

The submitted documentation was reviewed by **Ishaq I. Chanda, P.E.**

*10/27/13*



NOA No. 13-0529.23  
Expiration Date: April 04, 2018  
Approval Date: October 31, 2013  
Page 2 of 2

**NOTICE OF ACCEPTANCE: EVIDENCE SUBMITTED**

**A. DRAWINGS**

1. Manufacturer's die drawings and sections (submitted under file #12-0807.03).
2. Drawing No. 12-SAT-13, titled "Dura-Storm 2000/3000 Auto SGD, Bi-Parting/Single Slide-LMI", sheets 1 thru 12 of 12 prepared by Engineering Express, dated 07-01-12 and last revised on 10/22/2013, signed and sealed by Frank L. Bennardo, P.E.

**B. TESTS**

1. Test reports on:
  - 1) Air Infiltration Test, per FBC, TAS 202-94
  - 2) Uniform Static Air Pressure Test, Loading per FBC TAS 202-94
  - 3) Water Resistance Test, per FBC, TAS 202-94 (Not conducted)
  - 4) Large Missile Impact Test per FBC, TAS 201-94
  - 5) Cyclic Wind Pressure Loading per FBC, TAS 203-94
  - 6) Forced Entry Test, per FBC 2411 3.2.1, TAS 202-94

Along with installation diagram of aluminum automatic entrance doors Sx-So w/ G-86 CVR Panic (TAS 202, 201/203-94) and So-Sx-Sx-So w/ Transom & G-86 CVR Panic (TAS 202), prepared by Fenestration Testing Laboratory, Inc. Test Report No. **FTL-7247**, dated 3/08/13, signed and sealed by Marlin D. Brinson, P. E

2. Test reports on:
  - 1) Air Infiltration Test, per FBC, TAS 202-94
  - 2) Uniform Static Air Pressure Test, Loading per FBC TAS 202-94
  - 3) Water Resistance Test, per FBC, TAS 202-94 (Not conducted)
  - 4) Large Missile Impact Test per FBC, TAS 201-94
  - 5) Cyclic Wind Pressure Loading per FBC, TAS 203-94
  - 6) Forced Entry Test, per FBC 2411 3.2.1, TAS 202-94

Along with installation diagram of aluminum automatic entrance doors, prepared by Fenestration Testing Laboratory, Inc. Test Report No. **FTL-6803**, dated 05/11/12 and last revised on 03-21-13, signed and sealed by Marlin D. Brinson, P. E.

Note: This test report has been revised by an addendum letter dated Nov 21, 2012, issued by Fenestration Testing Lab, signed and sealed by Marlin D. Brinson, P. E. (submitted under file #12-0807.03)

**C. CALCULATIONS (submitted under file #12-0807.03)**

1. Anchor verification calculations and structural analysis, complying with FBC-2010, prepared by Engineering Express, dated 08-02-12, signed and sealed by Frank L. Bennardo, P.E.
2. Glazing complies w/ ASTM E-1300-02 & -04.

**QUALITY ASSURANCE**

1. Miami Dade Department of Regulatory and Economic Resources (RER).

**D. MATERIAL CERTIFICATIONS**

1. Notice of Acceptance No. 12-1213.04 issued to SAF-GLAS, L.L.C. for "SAF GLAS, Polycarbonate laminate", expiring on 12/16/13.
2. Notice of Acceptance No. 11-0624.01 issued to E.I. DuPont DeNemours & Co., Inc. for their "DuPont PVB Butacite ®", expiring on 12/11/16.
3. Technical strength data of Trelleborg EPDM per ASTM C864.



Ishaq I. Chanda, P.E.

Product Control Examiner

NOA No. 13-0529.23

Expiration Date: April 04, 2018

Approval Date: October 31, 2013

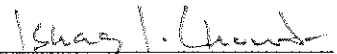
**NOTICE OF ACCEPTANCE: EVIDENCE SUBMITTED**

**E. STATEMENTS**

1. Statement letter of conformance to FBC 2010, prepared by Engineering Express, dated May 17, 2013, signed and sealed by Frank L. Bennardo, P.E
2. Statement letter of conformance and letter of no financial interest, prepared by Engineering Express, dated 08-02-12, signed and sealed by Frank L. Bennardo, P.E.
3. Lab compliance as part of the above referenced test report.

**G. OTHER**

1. This NOA revises NOA #12-0807.03, expiring 04/18/18.
2. Test proposals # 13-0006 dated 01/14/13 approved by RER and # 11-1016, dated NOV 11, 2011 approved by PERA.
3. Manufacture supplied Adam Rites deadbolt/hook, bolts mechanism and G-86 panic exit device brochures.



Ishaq I. Chanda, P.E.

Product Control Examiner

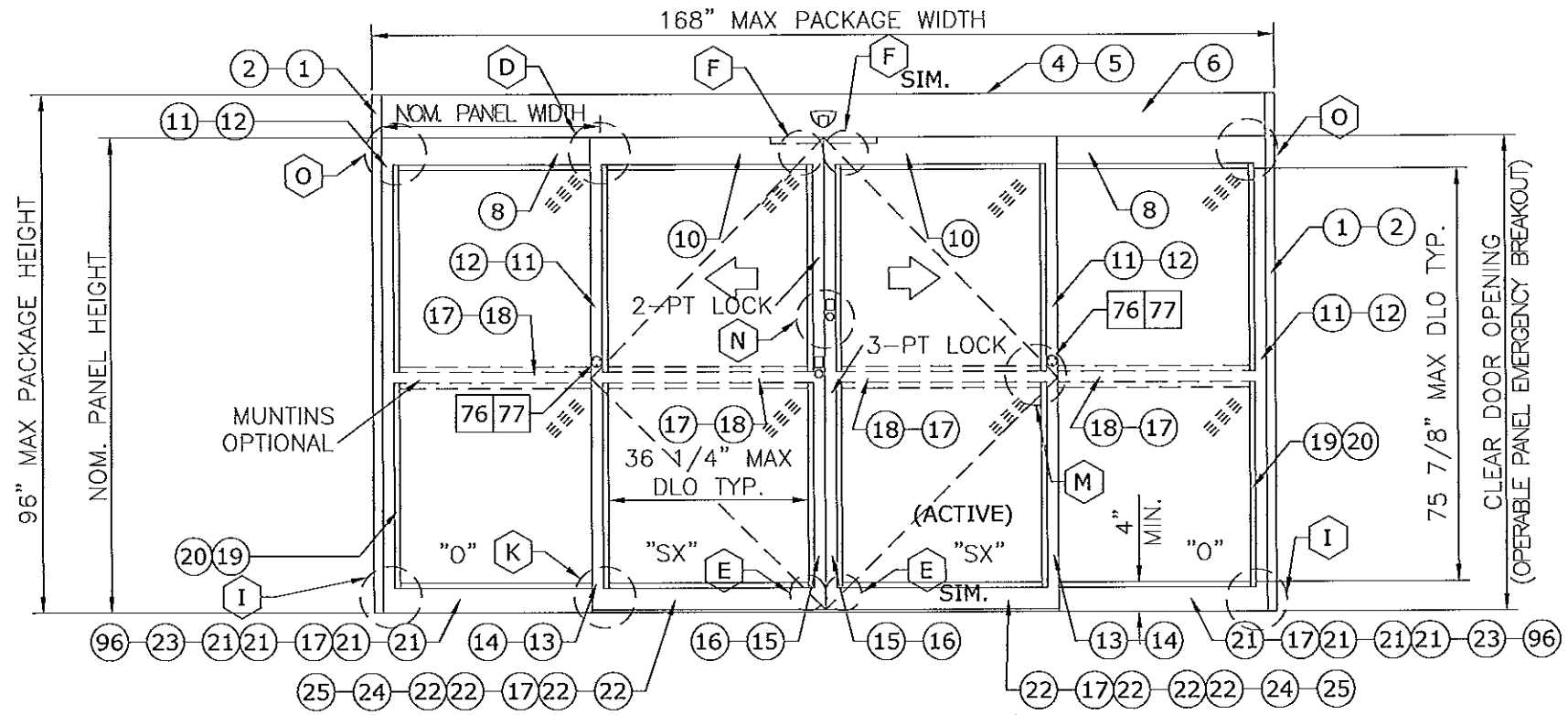
NOA No. 13-0529.23

Expiration Date: April 04, 2018

Approval Date: October 31, 2013

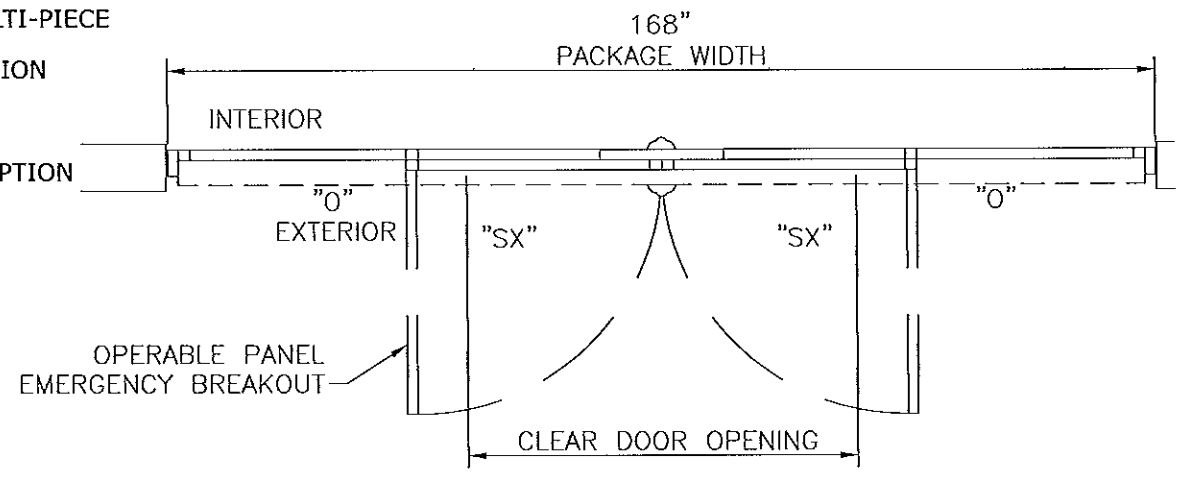


# DURA-STORM SERIES 2000 ELEVATION AND PLAN



EXTERIOR ELEVATION

- (XX) : EXTRUSION
- (XX)(XX) : EXTRUSION, MULTI-PIECE
- (XX)-(XX) : EXTRUSION, OPTION
- (XX) : PART
- (XX)(XX) : PART, MULTI-PIECE
- (XX)-(XX) : PART, OPTION
- (XX) : DETAIL
- (XX)-(XX) : DETAIL, OPTION



PLAN

- NOTES**
- TYPICAL DOOR SHOWN. STILE, RAIL AND MUNTIN OPTIONS AVAILABLE AS INDICATED.
  - HORIZONTAL MUNTIN BAR NOT REQUIRED AS INDICATED BY DASHED LINES. MAX DLO: 36 1/4" W X 75 3/4" H AS SHOWN
  - 5-POINT LOCKING STANDARD (3-PT ACTIVE & 2-PT). SEE SHEET 13.
  - PRODUCT SHALL BE MANUFACTURED AND INSTALLED IN ACCORDANCE WITH PRODUCT APPROVALS.
  - SEE SHEETS 5, 6 AND 9 FOR REQUIRED ANCHORAGE.
  - SEE SHEET 12 FOR GLAZING DETAILS.

DESIGN RATINGS		
MISSILE IMPACT RATING		
<input checked="" type="checkbox"/>	LARGE AND SMALL MISSILE IMPACT	
DESIGN PRESSURE RATING (PSF[Pa])		
	WHERE WATER INFILTRATION RATING IS REQUIRED	WHERE WATER INFILTRATION RATING IS NOT REQUIRED
POSITIVE	NOT APPROVED	75 PSF
NEGATIVE	NOT APPROVED	75 PSF

SERIES 2000 BI-PART AVAILABLE PACKAGE WIDTH INFORMATION						
PACKAGE WIDTH	ROUGH OPENING	STILE TYPE	NOMINAL CLEAR DOOR OPENING	NOMINAL PANEL WIDTH (SX)	NOMINAL PANEL WIDTH (O)	CAULKING ALLOWANCE
168.0"	168.5"	NARROW	70.6"	42.7"	42.7"	1/4" / SIDE
168.0"	168.5"	MEDIUM	66.3"	43.4"	43.4"	1/4" / SIDE

SERIES 2000 BI-PART AVAILABLE PACKAGE HEIGHT INFORMATION			
PACKAGE HEIGHT	ROUGH OPENING	NOMINAL CLEAR DOOR OPENING	CAULKING ALLOWANCE
96.0"	96.3"	86.5"	1/4" TOP

**FRANK L. BERNARDO**  
#PE0046549

No. 45510  
10/22/2013  
STATE OF FLORIDA  
REGISTERED PROFESSIONAL ENGINEER

**ENGINEERING EXPRESS**  
160 SW 12th AVENUE, #106  
DEERFIELD BEACH, FL 33442  
Ph: (954) 354-0660 Fax: (954) 354-4444  
WWW.ENGEXP.COM  
CERT. OF AUTH. #9885  
A. FRANK L. BERNARDO, P.E., INC. INNOVATION

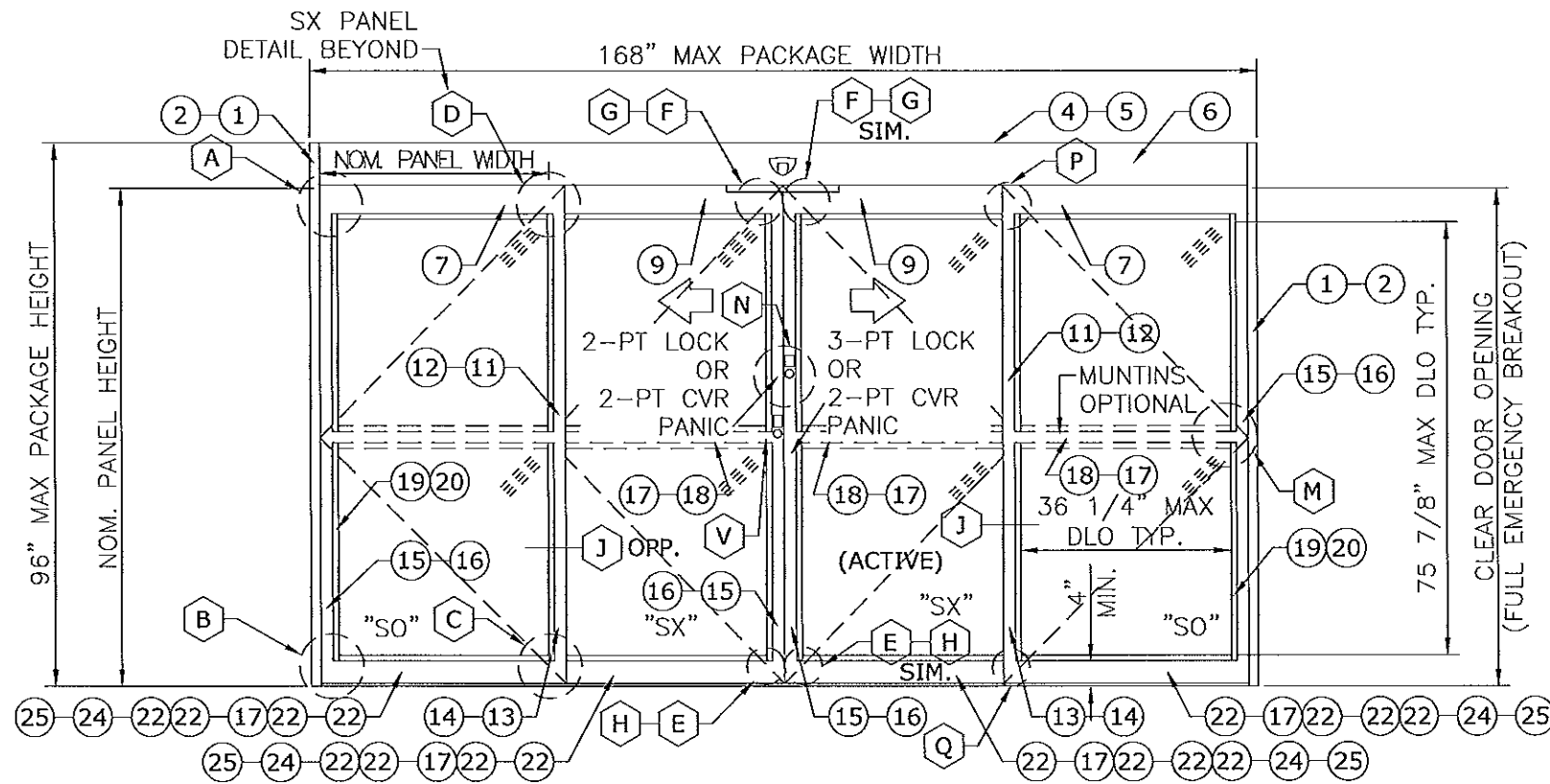
**STANLEY**  
ACCESS TECHNOLOGIES  
65 SCOTT SWAMP ROAD, FARMINGTON, CT 06032  
SERIES "DURA-STORM 2000/3000" AUTO SGD  
BI-PARTING/SINGLE SLIDE (LMT)  
MIAMI-DADE NOTICE OF ACCEPTANCE

DRWN	CHKD	DATE
KL	FLB	07/01/12
KL	FLB	11/26/12
KL	FLB	01/28/13
KL	FLB	03/22/13
KL	FLB	04/01/13
KL	FLB	05/17/13
KL	FLB	06/07/13
KL	FLB	10/03/13

**PRODUCT REVISED**  
as complying with the Florida Building Code  
Acceptance No. 13-0529.23  
Expiration Date 4/9/18  
By: *[Signature]*  
Miami Dade Product Control

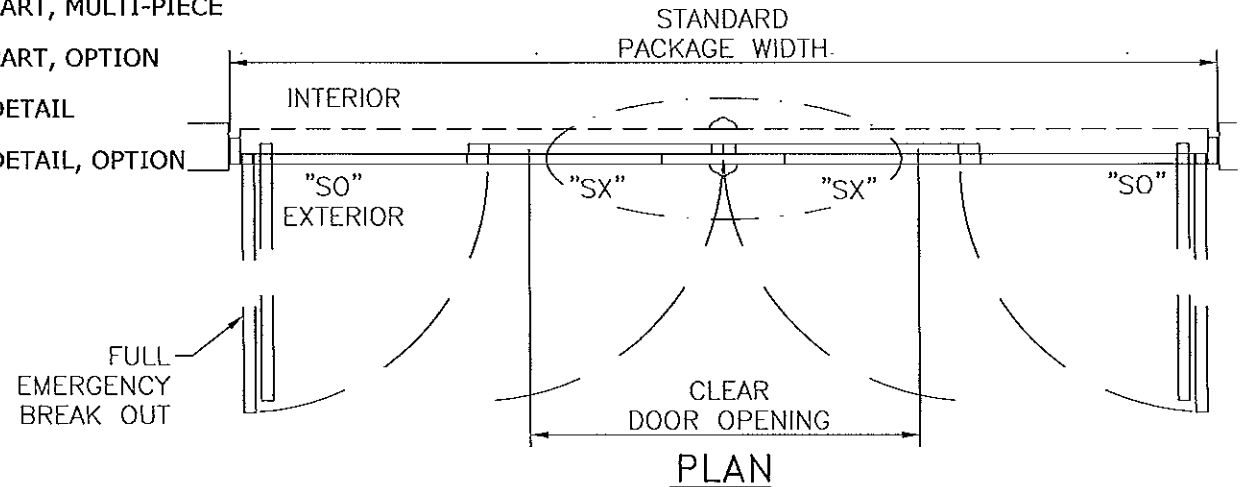
12-SAT-13  
SCALE: 07  
PAGE DESCRIPTION:  
14  
2

# DURA-STORM SERIES 3000 ELEVATION AND PLAN



EXTERIOR ELEVATION

- (XX) : EXTRUSION
- (XX)(XX) : EXTRUSION, MULTI-PIECE
- (XX)-(XX) : EXTRUSION, OPTION
- [XX] : PART
- [XX][XX] : PART, MULTI-PIECE
- [XX]-[XX] : PART, OPTION
- (XX) : DETAIL
- (XX)-(XX) : DETAIL, OPTION



PLAN

- NOTES**
- TYPICAL DOOR SHOWN. STILE, RAIL AND MUNTIN OPTIONS AVAILABLE AS INDICATED.
  - HORIZONTAL MUNTIN BAR NOT REQUIRED EXCEPT AT PANIC DEVICE, AS INDICATED BY DASHED LINES. MAX DLO: 36 1/4" W X 75 3/4" H AS SHOWN; 36 3/4" H WITH PANIC DEVICE MUNTIN.
  - 4-POINT CVR LOCKING WITH G86 PANIC RELEASE (2-PT CVR ACTIVE & 2-PT CVR) AND 5-POINT LOCKING (3-PT ACTIVE & 2-PT) AVAILABLE. SEE SHEET 13.
  - PRODUCT SHALL BE MANUFACTURED AND INSTALLED IN ACCORDANCE WITH PRODUCT APPROVALS.
  - SEE SHEETS 5, 7, 8, AND 9 FOR REQUIRED ANCHORAGE.
  - SEE SHEET 12 FOR GLAZING DETAILS.

DESIGN RATINGS		
MISSILE IMPACT RATING		
<input checked="" type="checkbox"/>	LARGE AND SMALL MISSILE IMPACT	
DESIGN PRESSURE RATING (PSF[Po])		
	WHERE WATER INFILTRATION RATING IS REQUIRED	WHERE WATER INFILTRATION RATING IS NOT REQUIRED
POSITIVE	NOT APPROVED	75 PSF
NEGATIVE	NOT APPROVED	75 PSF

SERIES 3000 BI-PART AVAILABLE PACKAGE WIDTH INFORMATION						
PACKAGE WIDTH	ROUGH OPENING	STILE TYPE	NOMINAL CLEAR DOOR OPENING	NOMINAL PANEL WIDTH (SX)	NOMINAL PANEL WIDTH (O)	CAULKING ALLOWANCE
168.0"	168.5"	NARROW	70.6"	42.7"	42.7"	1/4" / SIDE
168.0"	168.5"	MEDIUM	66.3"	43.4"	43.4"	1/4" / SIDE

SERIES 3000 BI-PART AVAILABLE PACKAGE HEIGHT INFORMATION			
PACKAGE HEIGHT	ROUGH OPENING	NOMINAL CLEAR DOOR OPENING	CAULKING ALLOWANCE
96.0"	96.3"	86.5"	1/4" TOP

FRANK L. BENNARD  
PROF. ENGINEER  
No. 36549  
10/22/2013  
STATE OF FLORIDA  
FRANK L. BENNARD, P.E.  
#PE0046549  
WWW.ENGINEXP.COM  
160 SW 12th AVENUE, #106  
DEERFIELD BEACH, FL 33442  
PH: (954) 354-0660 FAX: (954) 354-0660  
A FRANK L. BENNARD, P.E., INC. INNOVATION

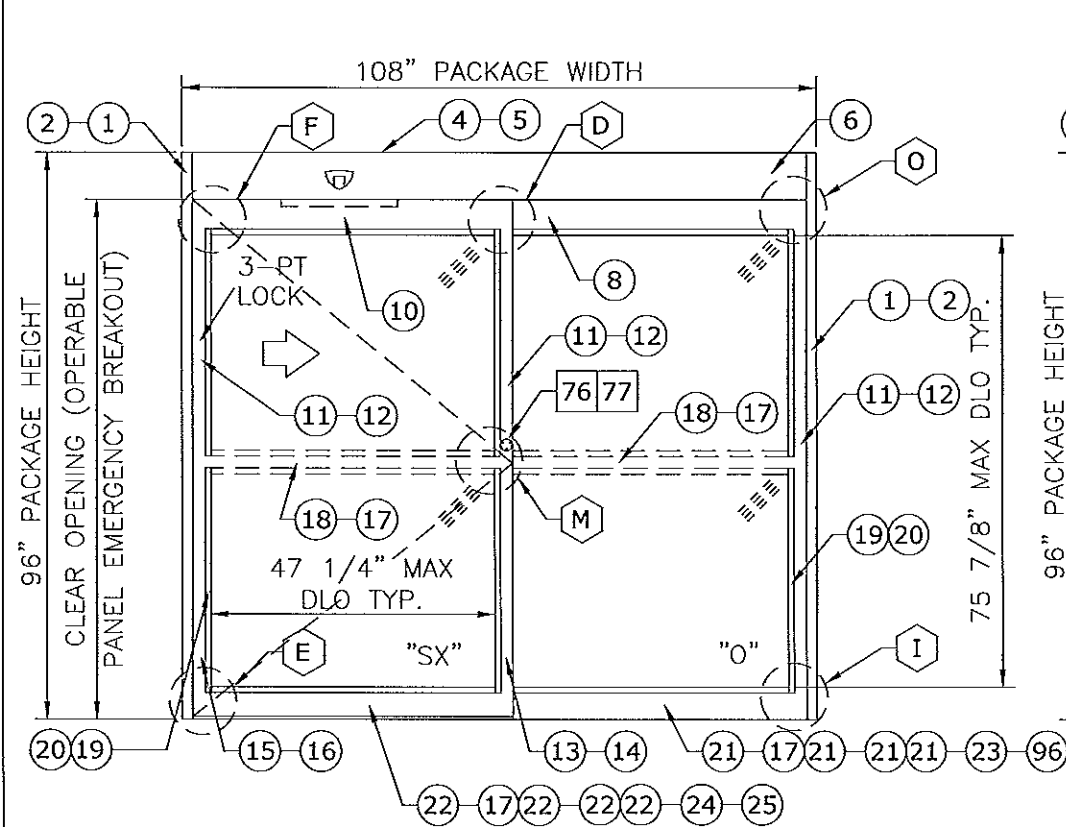
**STANLEY**  
ACCESS TECHNOLOGIES  
65 SCOTT SWAMP ROAD, FARMINGTON, CT 06032  
SERIES "DURA-STORM 2000/3000" AUTO SGD  
BI-PARTING/SINGLE SLIDE (LMI)  
MIAMI-DADE NOTICE OF ACCEPTANCE

**PRODUCT REVISED**  
as complying with the Florida  
Building Code  
Acceptance No. 13-029.23  
Expiration Date 4/19/18  
By: [Signature]  
Product Control

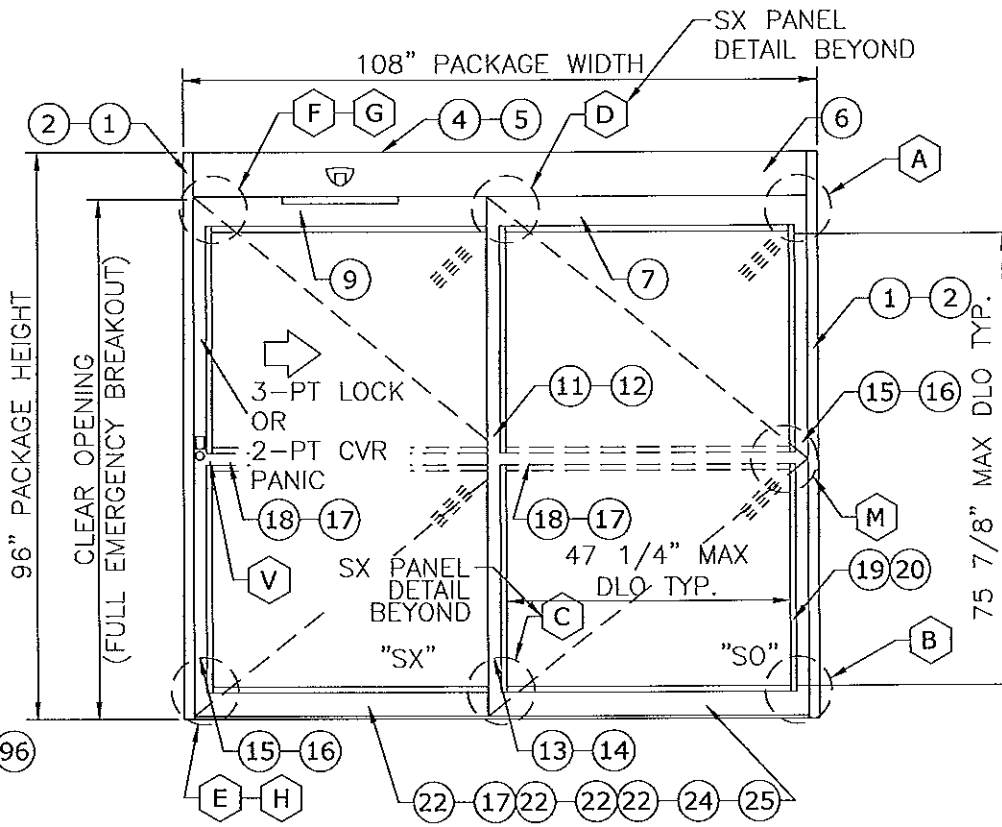
REMARKS	DRWN	CHKD	DATE
INIT ISSUE	KL	FLB	07/01/12
REVIEWER COMMENT	KL	FLB	11/28/12
ADDL COMMENTS	KL	FLB	01/28/13
ADDL COMMENTS	KL	FLB	03/22/13
ADDL COMMENTS	KL	FLB	04/01/13
REV. PER TESTING	KL	FLB	05/17/13
ADDL COMMENTS	KL	FLB	08/07/13
ADDL COMMENTS	KL	FLB	10/03/13

12-SAT-13  
SCALE: 07  
PAGE DESCRIPTION:  
14  
3

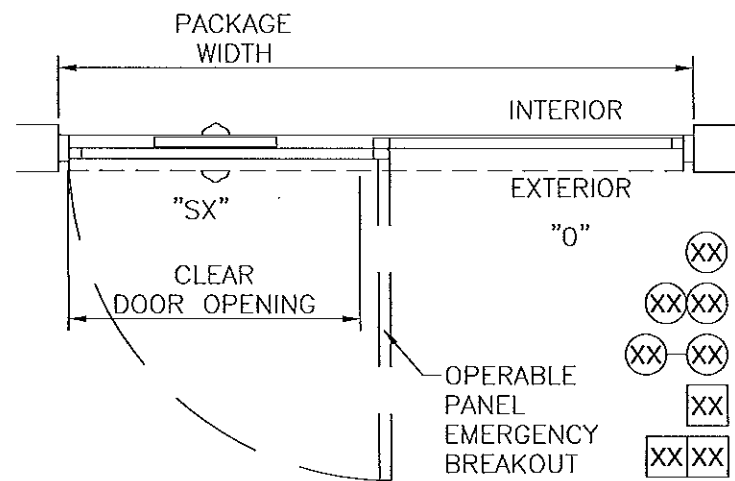
# DURA-STORM SERIES 2000/3000 SINGLE SLIDES, ELEVATION AND PLAN



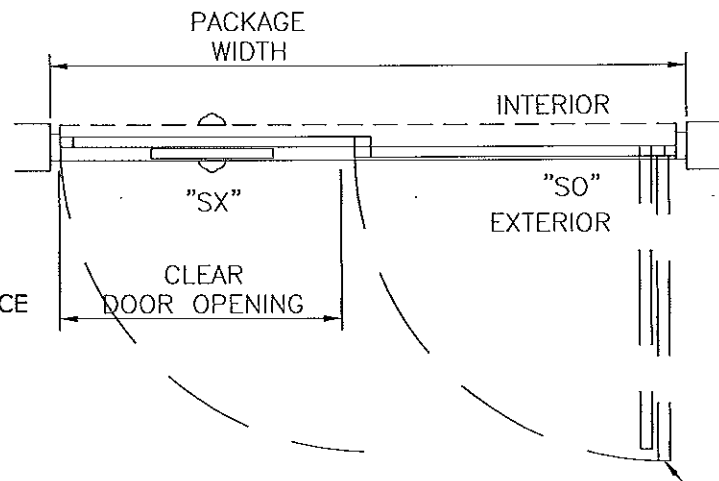
SERIES 2000 (SX-O) SINGLE SLIDE EXTERIOR ELEVATION



SERIES 3000 (SX-SO) SINGLE SLIDE EXTERIOR ELEVATION



SERIES 2000 (SX-O) SINGLE SLIDE PLAN



SERIES 3000 (SX-SO) SINGLE SLIDE PLAN

- ⊗ : EXTRUSION
- ⊗⊗ : EXTRUSION, MULTI-PIECE
- ⊗⊗-⊗⊗ : EXTRUSION, OPTION
- ⊗ : PART
- ⊗⊗⊗ : PART, MULTI-PIECE
- ⊗⊗-⊗⊗ : PART, OPTION
- ⊗⊗ : DETAIL
- ⊗⊗-⊗⊗ : DETAIL, OPTION

- NOTES**
- TYPICAL DOOR SHOWN. STILE, RAIL AND MUNTIN OPTIONS AVAILABLE AS INDICATED.
  - HORIZONTAL MUNTIN BAR NOT REQUIRED EXCEPT AT PANIC DEVICE AS INDICATED BY DASHED LINES. MAX DLO: 47 1/4" W X 76" H AS SHOWN; 36 3/4" H WITH PANIC DEVICE MUNTIN.
  - 2-POINT CVR LOCKING WITH G86 PANIC RELEASE AND 3-POINT LOCKING AVAILABLE ON SERIES 3000. 3-POINT ONLY ON SERIES 2000. SEE SHEET 13.
  - PRODUCT SHALL BE MANUFACTURED AND INSTALLED IN ACCORDANCE WITH PRODUCT APPROVALS.
  - SEE SHEETS 5, 7, 8 AND 9 FOR REQUIRED ANCHORAGE.
  - SEE SHEET 12 FOR GLAZING DETAILS.

DESIGN RATINGS		
MISSILE IMPACT RATING		
<input checked="" type="checkbox"/>	LARGE AND SMALL MISSILE IMPACT	
DESIGN PRESSURE RATING (PSF [Pa])		
	WHERE WATER INFILTRATION RATING IS REQUIRED	WHERE WATER INFILTRATION RATING IS NOT REQUIRED
POSITIVE	NOT APPROVED	75 PSF
NEGATIVE	NOT APPROVED	75 PSF

SERIES 2000 AND 3000 SINGLE SLIDE AVAILABLE PACKAGE WIDTH INFORMATION						
PACKAGE WIDTH	ROUGH OPENING	STILE TYPE	NOMINAL CLEAR DOOR OPENING	NOMINAL PANEL WIDTH (SX)	NOMINAL PANEL WIDTH (O)	CAULKING ALLOWANCE
108.0"	108.5"	NARROW	46.4"	53.8"	53.8"	1/4" / SIDE
108.0"	108.5"	MEDIUM	44.3"	54.6"	54.6"	1/4" / SIDE

SERIES 2000 AND 3000 SINGLE SLIDE AVAILABLE PACKAGE HEIGHT INFORMATION			
PACKAGE HEIGHT	ROUGH OPENING	NOMINAL CLEAR DOOR OPENING	CAULKING ALLOWANCE
96.0"	96.3"	86.5"	1/4" TOP

**PRODUCT REVISED**  
 as complying with the Florida Building Code  
 Acceptance No. 13-0529.23  
 Expiration Date: 4/1/18  
 By: [Signature]  
 Miami Dade Product Control

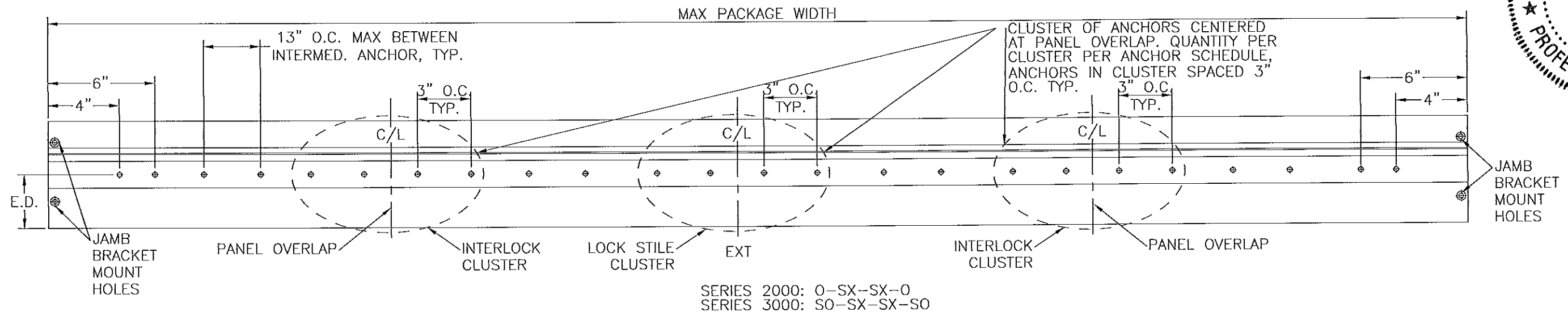
FRANK L. BERNARDO, P.E., INC. INNOVATION ENGINEERS  
 LICENSE No. 10,221,2013  
 ENGINEERING STATE OF FLORIDA  
 160 SW 12th AVENUE, 2105 DEERFIELD BEACH, FL 33442  
 Ph: (954) 354-0660 FAX: (954) 354-0434  
 WWW.ENGP.COM  
 CERT OF AUTH #8986

**STANLEY**  
 ACCESS TECHNOLOGIES  
 65 SCOTT SWAMP ROAD, FARMINGTON, CT 06032  
 SERIES "DURA-STORM 2000/3000" AUTO SGD  
 BI-PARTING/SINGLE SLIDE (LMI)  
 MIAMI-DADE NOTICE OF ACCEPTANCE

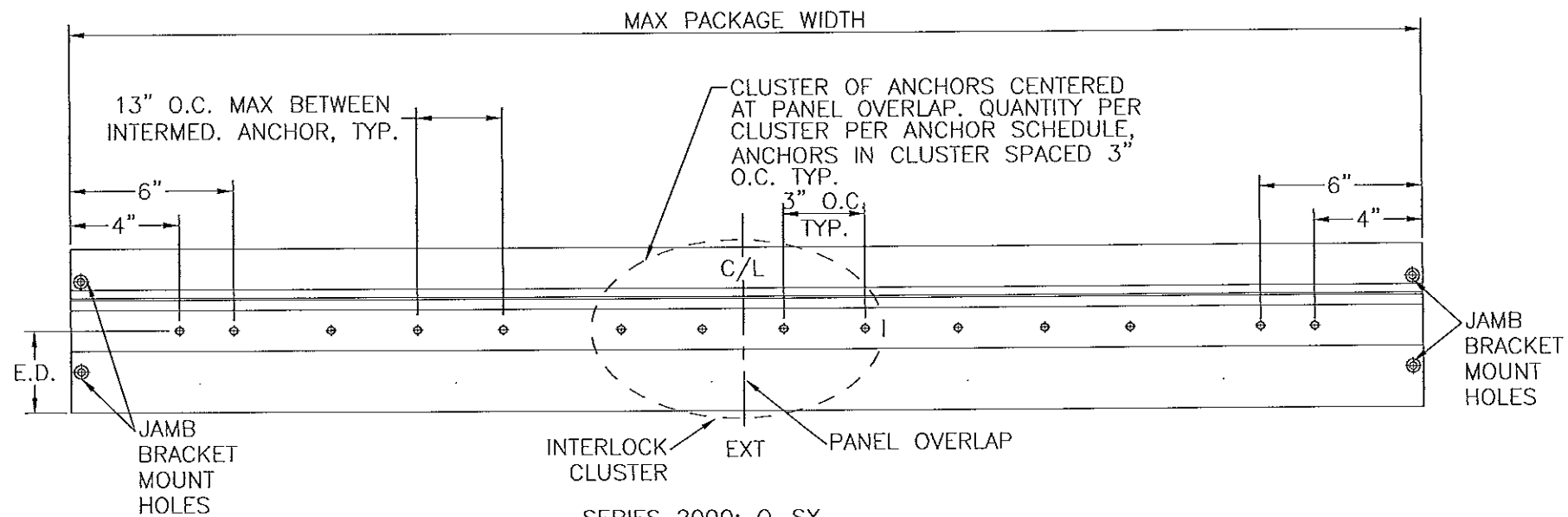
REMARKS	DRWN/CHKD	DATE
INIT ISSUE	KL	07/01/12
REVIEWER COMMENT	KL	11/26/12
ADDL COMMENTS	KL	01/28/13
ADDL COMMENTS	KL	03/22/13
ADDL COMMENTS	KL	04/01/13
REV. PER TESTING	KL	05/17/13
ADDL COMMENTS	KL	08/07/13
ADDL COMMENTS	KL	10/03/13

12-SAT-13  
 SCALE: 1/8" = 1'-0"  
 PAGE DESCRIPTION:  
 14

# DURA-STORM SERIES 2000/3000 HEADER ANCHORING



SERIES 2000: 0-SX-SX-0  
 SERIES 3000: SO-SX-SX-SO  
**HEADER ANCHORING**  
 N.T.S. BI-PARTING



SERIES 2000: 0-SX  
 SERIES 3000: SO-SX  
**HEADER ANCHORING**  
 N.T.S. SINGLE SLIDE

SEE JAMB ANCHORS SHEETS 6 THROUGH 8, AND THRESHOLD ANCHORS SHEET 8. THRESHOLD ANCHORS APPLICABLE ONLY TO 3KSI CONCRETE.

ANCHOR SCHEDULE									
HOST STRUCTURE	ANCHOR	EMBEDMENT	EDGE DISTANCE	NUMBER OF ANCHORS PER INTERLOCK/LOCK STILE CLUSTER				MAX INTERMEDIATE ANCHOR SPACING ALONG HEAD & THRESHOLD	MAX ANCHOR SPACING ALONG JAMBS
				HEAD		THRESHOLD			
				SINGLE SLIDE	BI-PART	SINGLE SLIDE	BI-PART		
3KSI MIN. CONCRETE	1/4" POWERS/RAWL PERMASEAL TAPPER	1-1/2"	3"	4	4	6	6	13" O.C. MAX	17-5/8" O.C. MAX
3/16" MIN. A36 STEEL	1/4-20 SAE GR. 5 SMS	FULL THREAD ENGAGEMENT	1/2"	4	4	N/A	N/A	13" O.C. MAX	17-5/8" O.C. MAX
G=0.55 MIN. WOOD	#14 WOOD SCREW	2"	3/4"	4	4	N/A	N/A	13" O.C. MAX	17-5/8" O.C. MAX
1/8" MIN. 6063-T5 ALUM.	#14 SAE GR. 5 SDS	FULL THREAD ENGAGEMENT	1/2"	4	4	N/A	N/A	13" O.C. MAX	17-5/8" O.C. MAX

**PRODUCT REVISED**  
 as complying with the Florida Building Code  
 Acceptance No. 13-029.13  
 Expiration Date 4/16/13  
 By: *[Signature]*  
 Miami Dade Product Control

FRANK L. BENNARDO, P.E.  
 LICENSE No. 40043  
 10/22/2013  
 PROFESSIONAL ENGINEER  
 EXPRESS  
 160 SW 12th AVENUE, #106  
 DEERFIELD BEACH, FL 33442  
 PH: (954) 354-0660 FAX: (954) 354-0447  
 WWW.ENGEXP.COM  
 CERT OF AUTH #9885  
 A FRANK L. BENNARDO, P.E., INC. INNOVATION

**STANLEY**  
 ACCESS TECHNOLOGIES  
 65 SCOTT SWAMP ROAD, FARMINGTON, CT 06032  
 SERIES "DURA-STORM 2000/3000" AUTO SGD  
 BI-PARTING/SINGLE SLIDE (LMI)  
 MIAMI-DADE NOTICE OF ACCEPTANCE

REMARKS	DRWN	CHKD	DATE
INIT ISSUE	KL	FLB	07/01/12
REVIEWER COMMENT	KL	FLB	11/26/12
ADDL COMMENTS	KL	FLB	01/28/13
ADDL COMMENTS	KL	FLB	03/22/13
ADDL COMMENTS	KL	FLB	04/01/13
REV. PER TESTING	KL	FLB	05/17/13
ADDL COMMENTS	KL	FLB	08/07/13
ADDL COMMENTS	KL	FLB	10/03/13

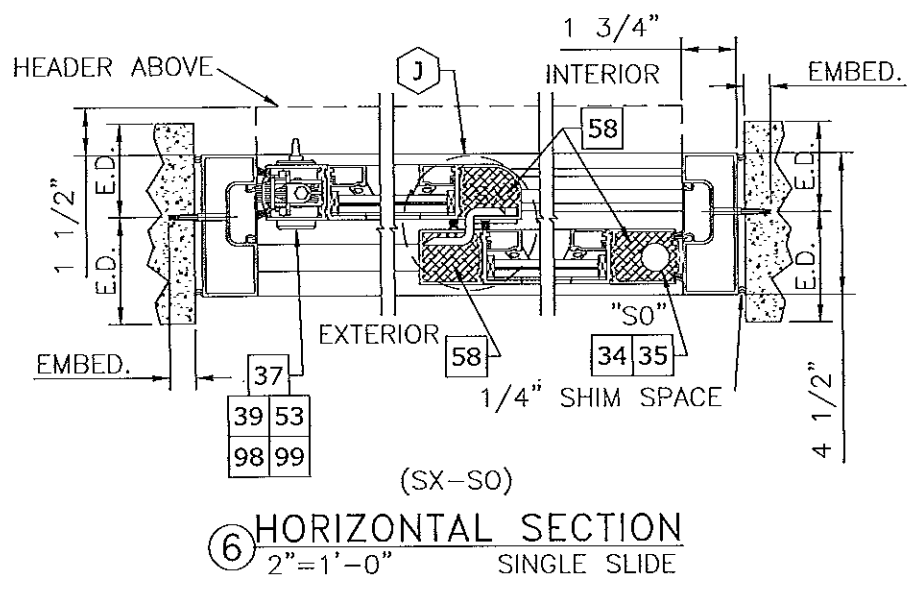
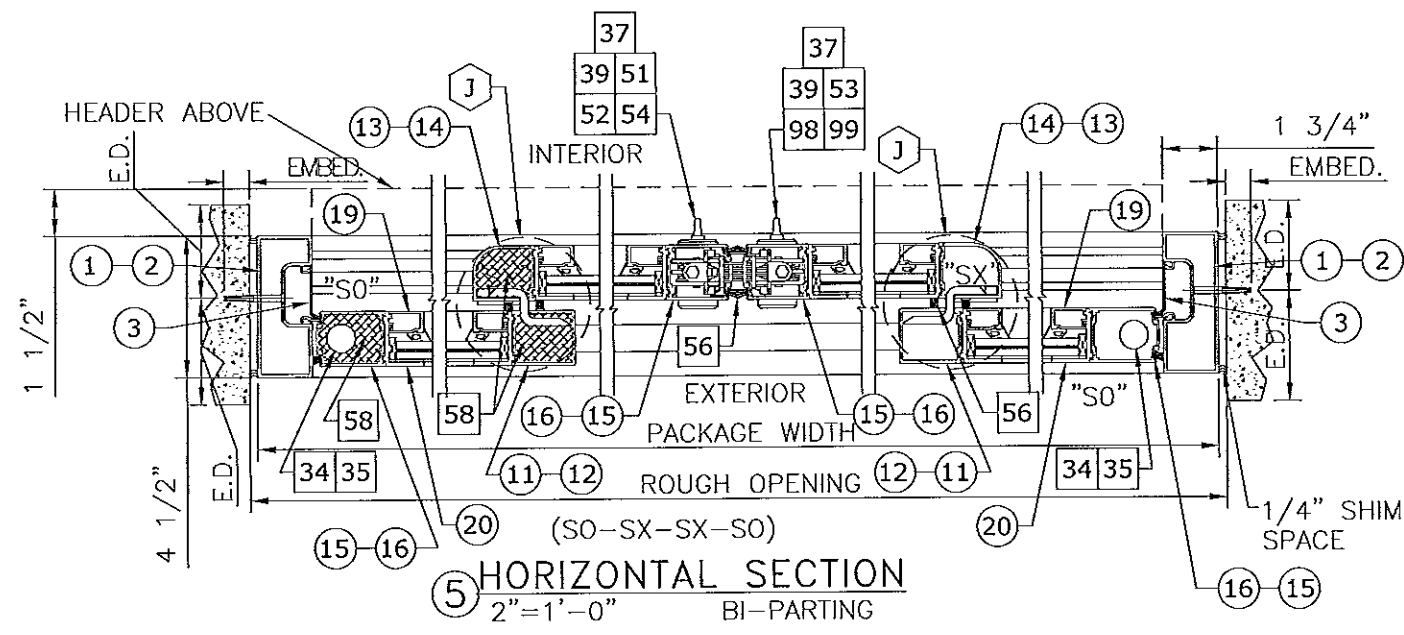
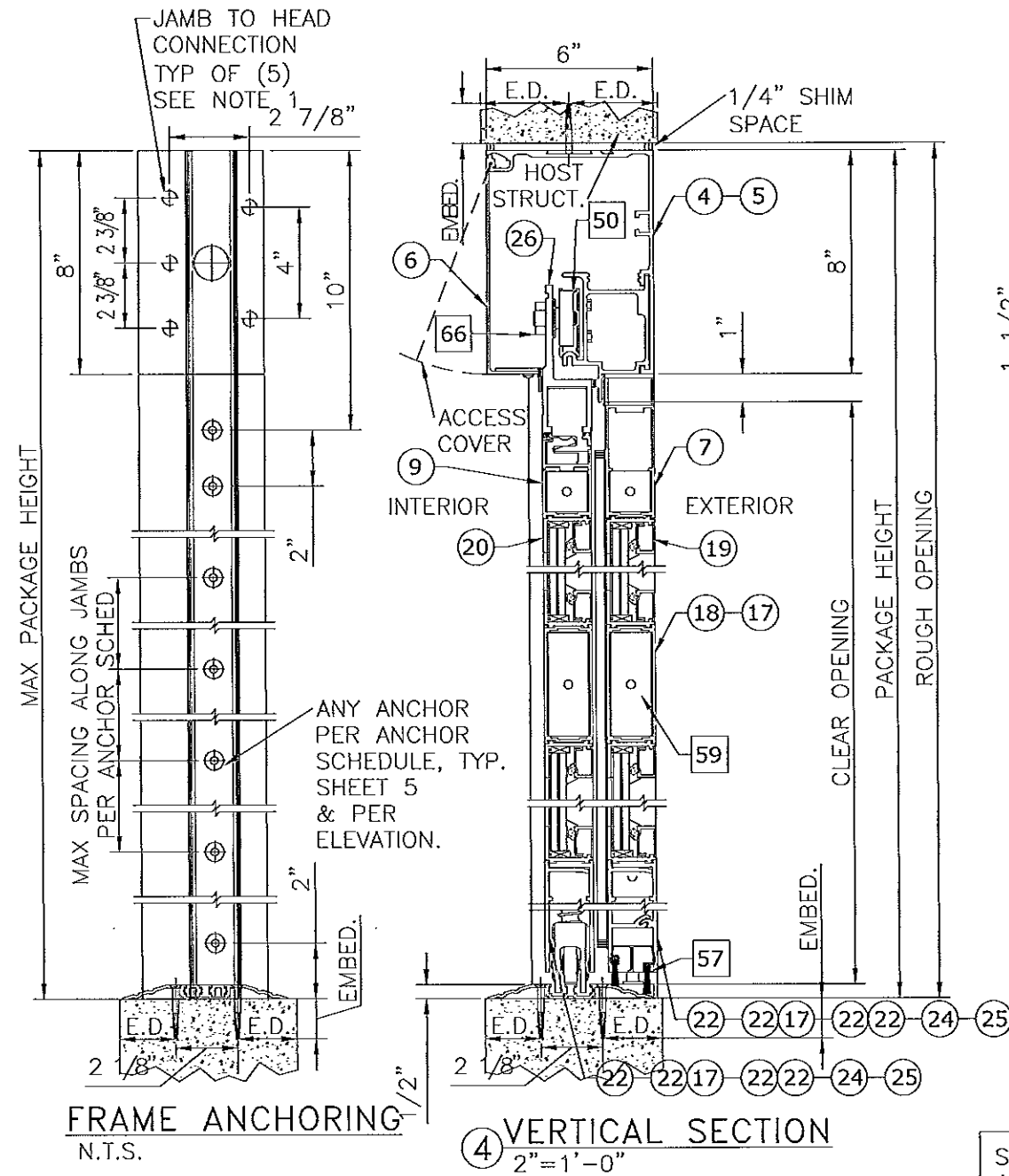
12-SAT-13  
 SCALE: 1/8" = 1'-0"  
 PAGE DESCRIPTION:  
 14



# DURA-STORM SERIES 3000 SECTIONS & ANCHORING, STANDARD 5-PT LOCKS

FRANK L. BENNARD, P.E.  
 LICENSE NO. 46849  
 STATE OF FLORIDA  
 PROFESSIONAL ENGINEER  
 10/22/2013

**ENGINEERING EXPRESS INC.**  
 160 SW 12th AVENUE, #106  
 DEERFIELD BEACH, FL 33442  
 Ph: (954) 354-0660 FAX: (954) 354-0443  
 WWW.ENGEXP.COM  
 CERT OF AUTH #9885  
 A FRANK L. BENNARD, P.E., INC. INNOVATION



- ⊗ : EXTRUSION
- ⊗⊗ : EXTRUSION, MULTI-PIECE
- ⊗-⊗ : EXTRUSION, OPTION
- ⊞ : PART
- ⊞⊞ : PART, MULTI-PIECE
- ⊞-⊞ : PART, OPTION
- ⊞⊞ : DETAIL
- ⊞-⊞ : DETAIL, OPTION

SEE HEAD ANCHORS SHEET 5,  
 AND THRESHOLD ANCHORS  
 SHEET 9. THRESHOLD  
 ANCHORS APPLICABLE ONLY  
 TO 3KSI CONCRETE.

NOTE: ITEM 58 "FOAM BLOCK" INSTALLED  
 IN ALL STILES, EXCEPT LOCKING STILES.  
 NOT SHOWN IN ALL STILES FOR CLARITY

**NOTES**  
 1. JAMB TO HEAD CONNECTION FASTENERS; 5/16-18 HHMS WITH WASHER.  
 2. SEE SHEET 11 FOR STACKED BOTTOM RAIL OPTIONS.

**NOTE: SEE SHEET 5 FOR ANCHOR SCHEDULE  
 AND ALLOWABLE ANCHOR TYPES**

**STANLEY**  
 ACCESS TECHNOLOGIES  
 65 SCOTT SWAMP ROAD, FARMINGTON, CT 06032  
 SERIES "DURA-STORM 2000/3000" AUTO SGD  
 BI-PARTING/SINGLE SLIDE (LMI)  
 MIAMI-DADE NOTICE OF ACCEPTANCE

REMARKS	DRWN	CHKD	DATE
INIT ISSUE	KL	FLB	07/01/12
REVIEWER COMMENT	KL	FLB	11/28/12
ADDL COMMENTS	KL	FLB	01/28/13
ADDL COMMENTS	KL	FLB	03/22/13
ADDL COMMENTS	KL	FLB	04/01/13
REV. PER TESTING	KL	FLB	05/17/13
ADDL COMMENTS	KL	FLB	08/07/13
ADDL COMMENTS	KL	FLB	10/03/13

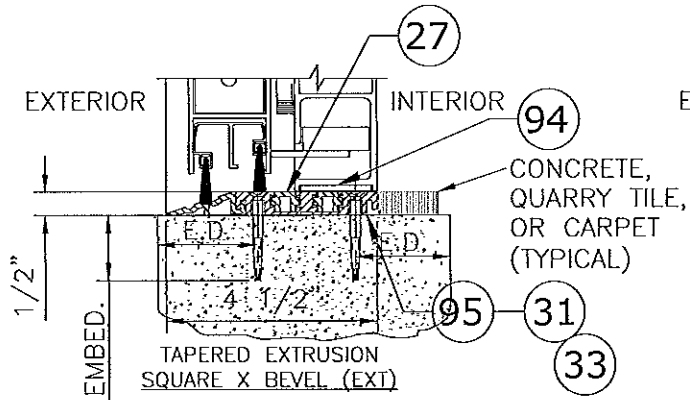
**PRODUCT REVISED**  
 as complying with the Florida  
 Building Code  
 Acceptance No. 13-0729-23  
 Expiration Date 4/1/18  
 By: [Signature]  
 Miami Dade Product Control

**12-SAT-13**  
 SCALE: 1/8"=1'-0"  
 PAGE DESCRIPTION: 07

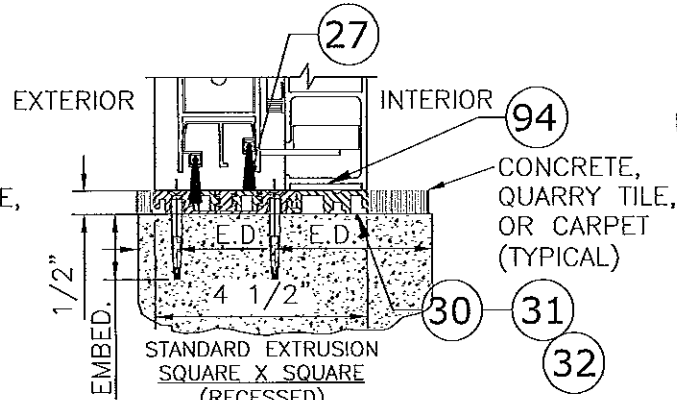


# DURA-STORM SERIES 2000/3000 THRESHOLDS & ANCHORING

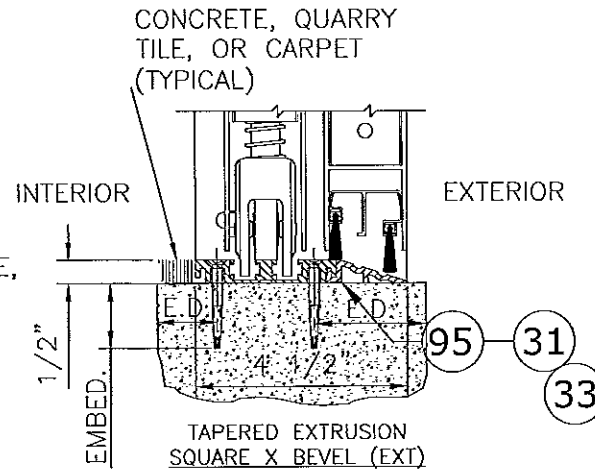
NOTE: USE CONCRETE ANCHOR PER ANCHOR SCHEDULE FOR ALL THRESHOLD ANCHORAGE DETAILS SHOWN HEREIN. SEE SHEET 5 FOR ANCHOR SCHEDULE AND ALLOWABLE CONCRETE ANCHOR TYPES



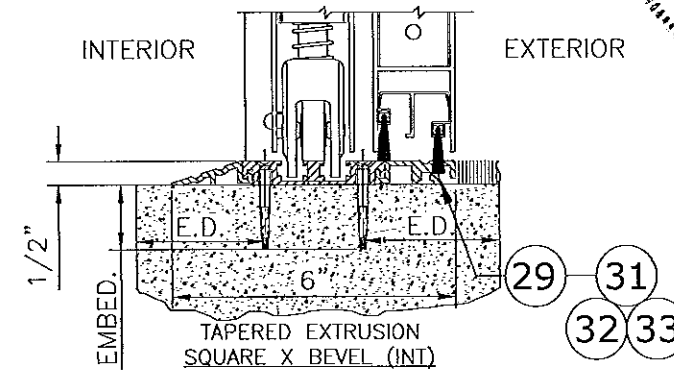
**THRESHOLD-TAPERED EXT**  
3"=1'-0" 2000



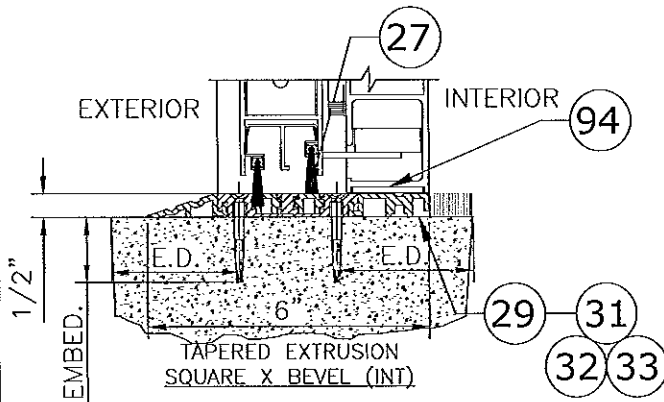
**THRESHOLD-SQUARE**  
3"=1'-0" 2000



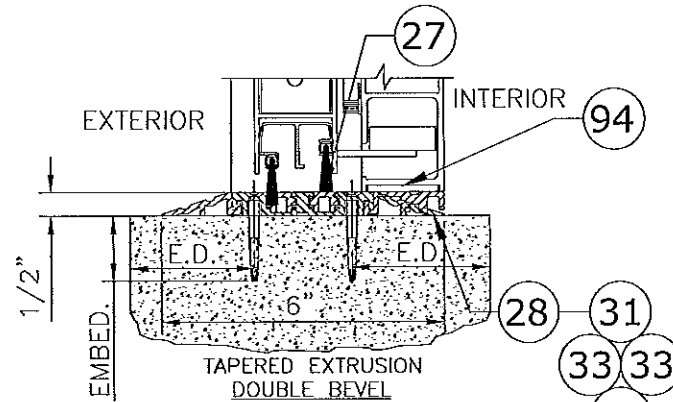
**THRESHOLD-TAPERED EXT**  
3"=1'-0" 3000



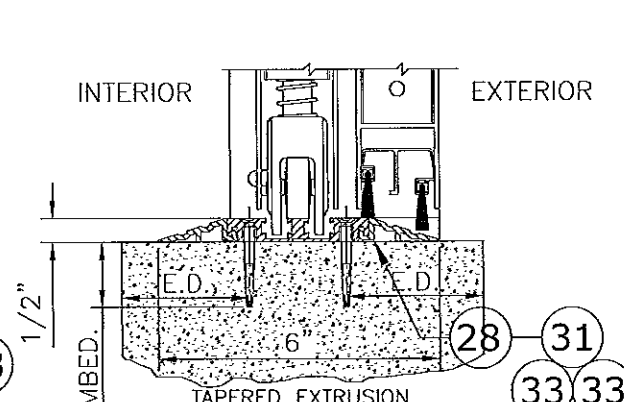
**THRESHOLD-TAPERED INT**  
3"=1'-0" 3000



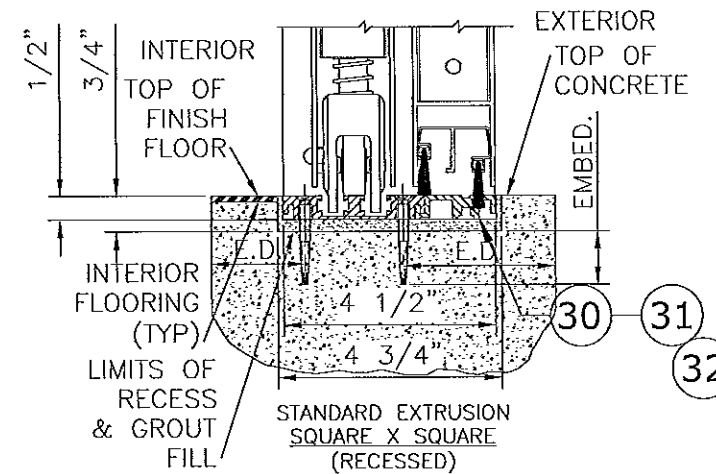
**THRESHOLD-TAPERED INT**  
3"=1'-0" 2000



**THRESHOLD-TAPERED**  
3"=1'-0" 2000

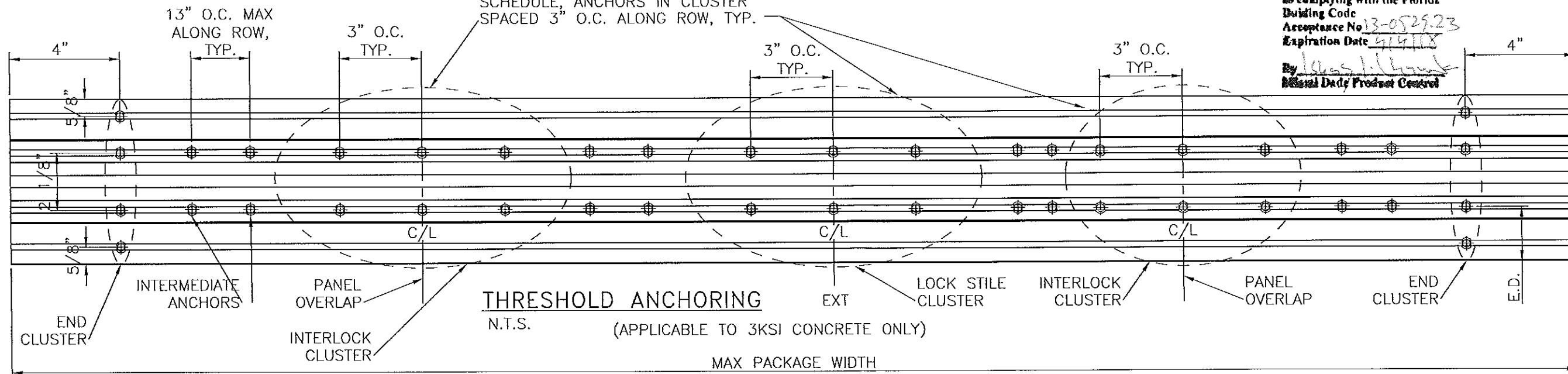


**THRESHOLD-TAPERED**  
3"=1'-0" 3000



**THRESHOLD-SQUARE**  
3"=1'-0" 3000

CLUSTER OF ANCHORS IN (2) ROWS CENTERED AT PANEL OVERLAP. QUANTITY PER CLUSTER PER ANCHOR SCHEDULE, ANCHORS IN CLUSTER SPACED 3" O.C. ALONG ROW, TYP.



**THRESHOLD ANCHORING**  
N.T.S. (APPLICABLE TO 3KSI CONCRETE ONLY)

MAX PACKAGE WIDTH

FRANK L. BENNARD, P.E.  
LICENSE No. 46510/22/2013  
STATE OF FLORIDA  
PROFESSIONAL ENGINEER  
160 SW 12th AVENUE, #106/VEER  
DEERFIELD BEACH, FL 33442  
PH: (954) 354-0660 FAX: (954) 354-0443  
WWW.ENGPX.COM  
CERT. OF AUTH. #0885  
A FRANK L. BENNARD, P.E., INC. INNOVATION

**STANLEY**  
ACCESS TECHNOLOGIES  
65 SCOTT SWAMP ROAD, FARMINGTON, CT 06032  
SERIES "DURA-STORM 2000/3000" AUTO SGD  
BI-PARTING/SINGLE SLIDE (LMI)  
MIAMI-DADE NOTICE OF ACCEPTANCE

REMARKS	DRWN	CHKD	DATE
INT ISSUE	KL	FLB	07/01/12
REVIEWER COMMENT	KL	FLB	11/28/12
ADDL COMMENTS	KL	FLB	01/28/13
ADDL COMMENTS	KL	FLB	03/22/13
ADDL COMMENTS	KL	FLB	04/01/13
REV. PER TESTING	KL	FLB	05/17/13
ADDL COMMENTS	KL	FLB	08/07/13
ADDL COMMENTS	KL	FLB	10/03/13

PRODUCT REVISED  
as complying with the Florida Building Code  
Acceptance No. 13-0529.23  
Expiration Date 5/4/18  
By: [Signature]  
Miami Dade Product Control

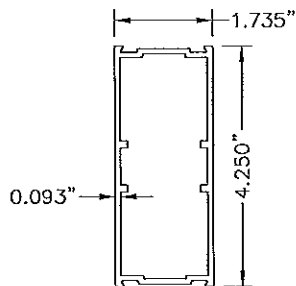
12-SAT-13

SCALE: 1/8"=1'-0" 07

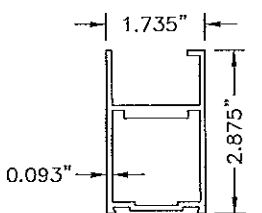
PAGE DESCRIPTION:

# DURA-STORM SERIES 2000/3000 EXTRUSIONS

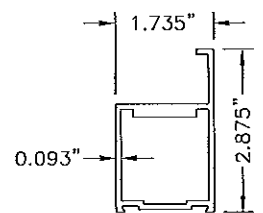
FRANK L. BENNARDO  
 LICENSED PROFESSIONAL ENGINEER  
 No. 46549  
 10/22/2013  
 STATE OF FLORIDA



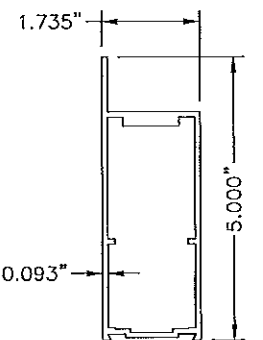
**18** MUNTIN BAR  
 N.T.S. 6063-T6



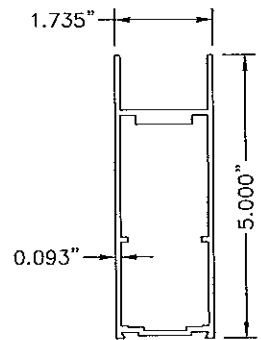
**9** TOP RAIL, SX (3000)  
 N.T.S. 6063-T6



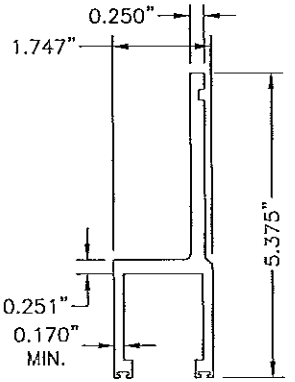
**10** TOP RAIL, SX (2000)  
 N.T.S. 6063-T6



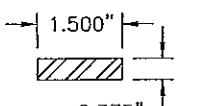
**7** TOP RAIL, SO (3000)  
 N.T.S. 6063-T6



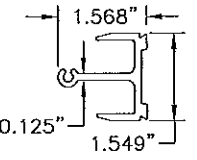
**8** TOP RAIL, O (2000)  
 N.T.S. 6063-T6



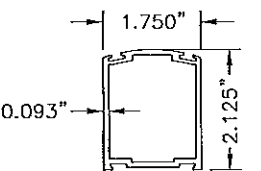
**26** HANGER  
 N.T.S. 6063-T6



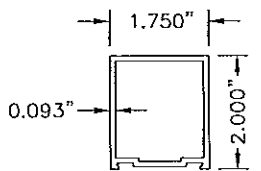
**74** STEEL PANIC REINFORCING  
 N.T.S. ASTM A-36



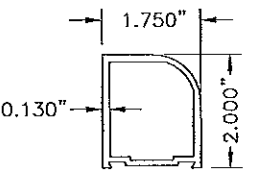
**79** PANIC MUNTIN CLIP  
 N.T.S. 6063-T6



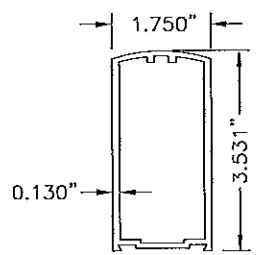
**15** STILE LEAD (NARROW)  
 N.T.S. 6063-T6



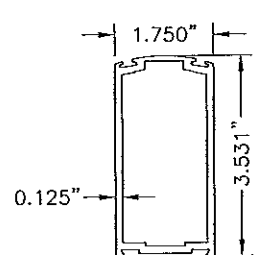
**11** STILE FIXED (NARROW)  
 N.T.S. 6063-T6



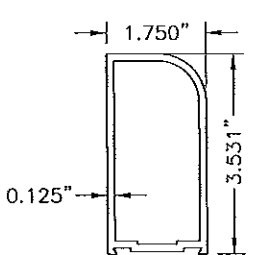
**13** STILE PIVOT (NARROW)  
 N.T.S. 6063-T6



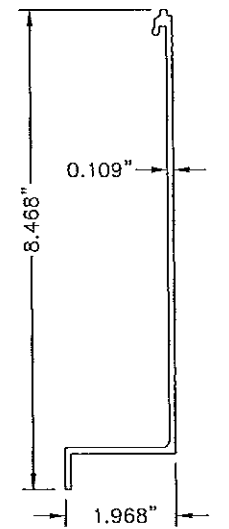
**12** STILE LEAD (MEDIUM)  
 N.T.S. 6063-T6



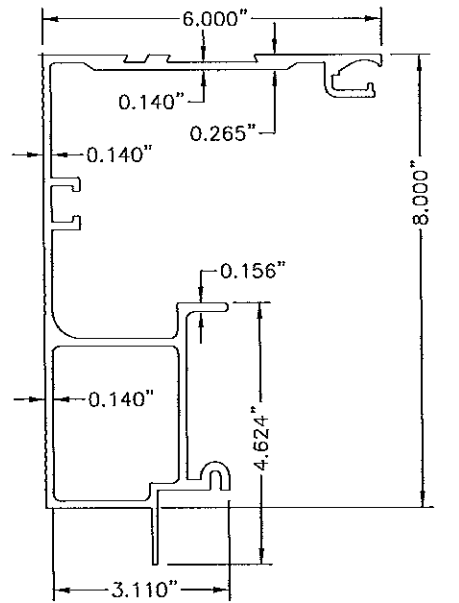
**16** STILE LOCK (MEDIUM)  
 N.T.S. 6063-T6



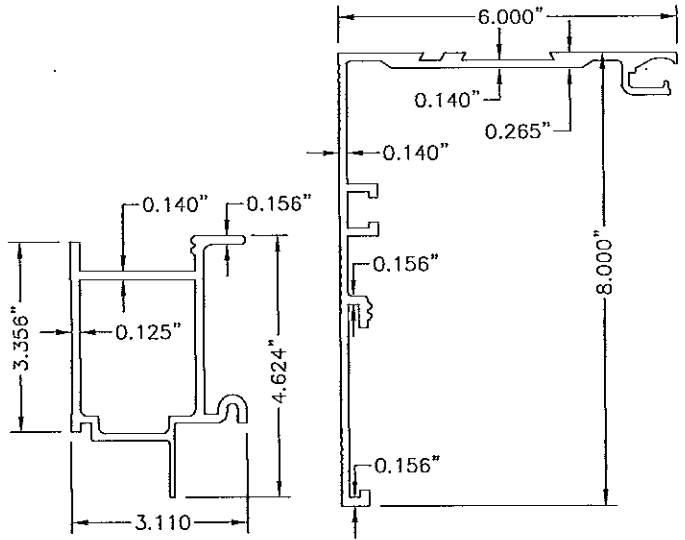
**14** STILE PIVOT (MEDIUM)  
 N.T.S. 6063-T6



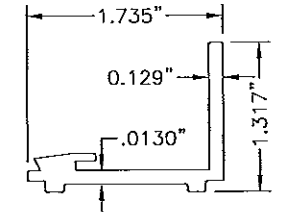
**6** HEADER COVER  
 N.T.S. 6063-T6



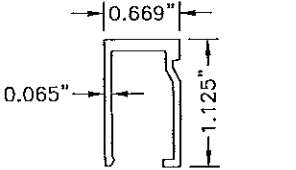
**4** HEADER  
 N.T.S. 6063-T6



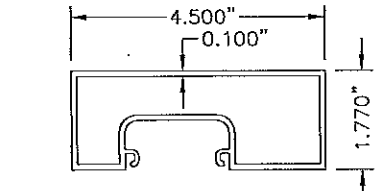
**5** HEADER (2 PC.)  
 N.T.S. 6063-T6



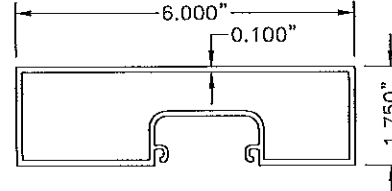
**20** GUTTER  
 N.T.S. 6063-T6



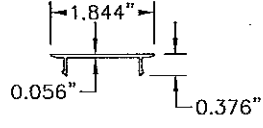
**19** GLASS STOP  
 N.T.S. 6063-T6



**1** JAMB 4 1/2  
 N.T.S. 6063-T6



**2** JAMB 6  
 N.T.S. 6063-T6



**3** JAMB INSERT  
 N.T.S. 6063-T6

**PRODUCT REVISED**  
 as complying with the Florida Building Code  
 Acceptance No. 13-0523.23  
 Expiration Date 6/1/18  
 By: [Signature]  
 Miami Dade Product Control

**STANLEY**

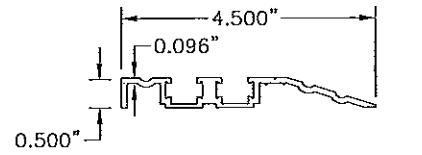
ACCESS TECHNOLOGIES  
 65 SCOTT SWAMP ROAD, FARMINGTON, CT 06032  
 SERIES "DURA-STORM 2000/3000" AUTO SGD  
 BI-PARTING/SINGLE SLIDE (LMI)  
 MIAMI-DADE NOTICE OF ACCEPTANCE

REMARKS	DRWN	CHKD	DATE
INT ISSUE	KL	FLB	07/01/12
REVIEWER COMMENT	KL	FLB	11/28/12
ADDL COMMENTS	KL	FLB	01/28/13
ADDL COMMENTS	KL	FLB	03/22/13
ADDL COMMENTS	KL	FLB	04/01/13
REV. PER TESTING	KL	FLB	05/17/13
ADDL COMMENTS	KL	FLB	08/07/13
ADDL COMMENTS	KL	FLB	10/03/13

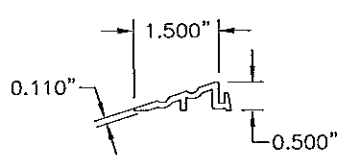
12-SAT-13  
 SCALE: 1/8" = 1'-0"  
 PAGE DESCRIPTION: 107

# DURA-STORM SERIES 2000/3000 EXTRUSIONS

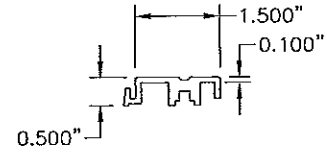
FRANK L. BENNARDO  
 LICENSE # PE0046549  
 No. 46549  
 10/22/2013  
 STATE OF FLORIDA  
 PROFESSIONAL ENGINEER



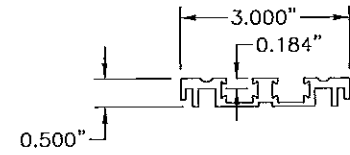
95 COMPONENT THRESHOLD  
 N.T.S. 6063-T6



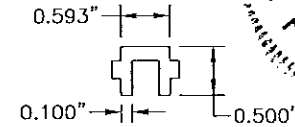
33 COMPONENT THRESHOLD  
 N.T.S. 6063-T6



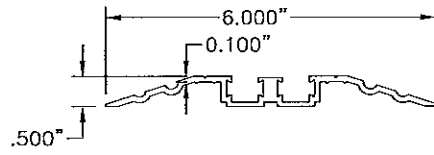
32 COMPONENT THRESHOLD  
 N.T.S. 6063-T6



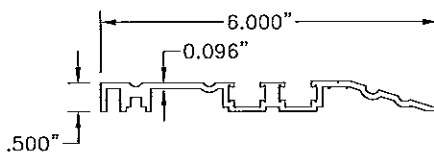
31 COMPONENT THRESHOLD  
 N.T.S. 6063-T6



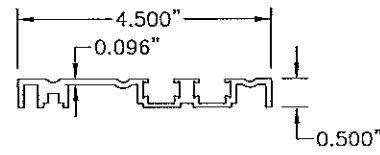
27 THRESHOLD FILLER  
 N.T.S. 6063-T6



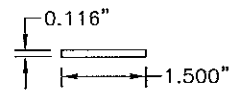
28 ALT THRESHOLD  
 N.T.S. 6063-T6



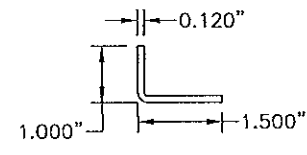
29 ALT THRESHOLD  
 N.T.S. 6063-T6



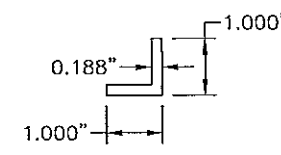
30 THRESHOLD  
 N.T.S. 6063-T6



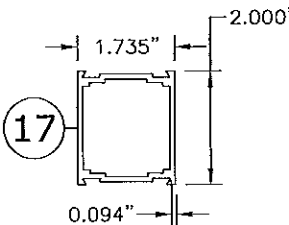
94 KEY STRIP  
 N.T.S. 6063-T6



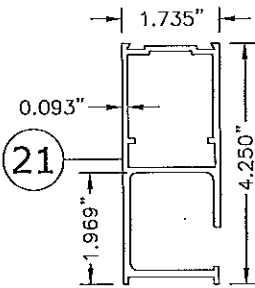
48 BRACKET  
 N.T.S. 6063-T6



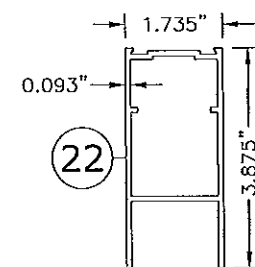
100 ANGLE  
 N.T.S. 6063-T6



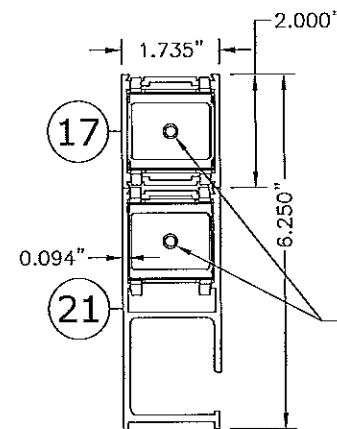
17 MUNTIN BAR  
 N.T.S. 6063-T6



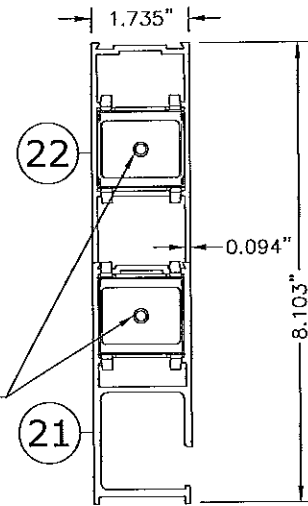
21 BOTTOM RAIL, O  
 N.T.S. 6063-T6



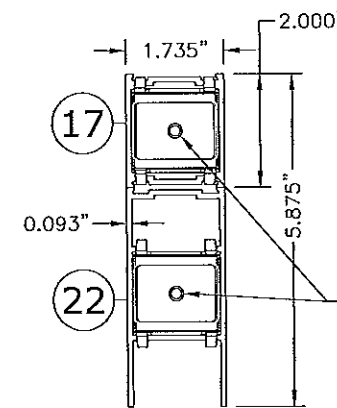
22 BOTTOM RAIL, SX/SO  
 N.T.S. 6063-T6



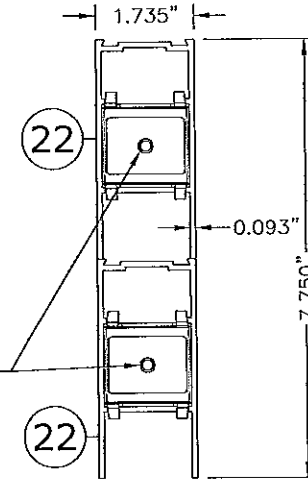
17 STACKED BOTTOM RAIL, O  
 N.T.S. 6063-T6



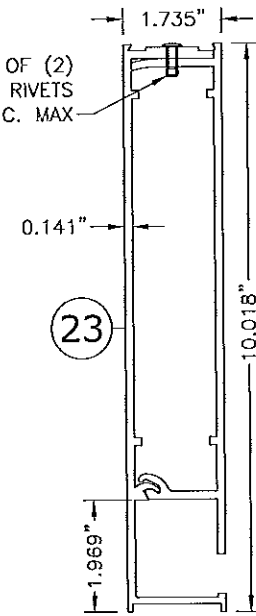
22 STACKED BOTTOM RAIL, O  
 N.T.S. 6063-T6



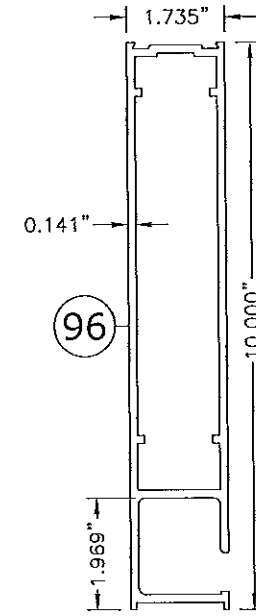
17 STACKED BOTTOM RAIL, SX/SO  
 N.T.S. 6063-T6



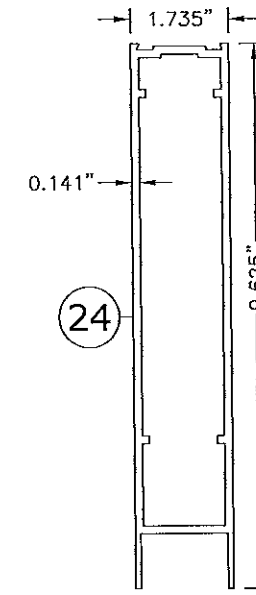
22 STACKED BOTTOM RAIL, SX/SO  
 N.T.S. 6063-T6



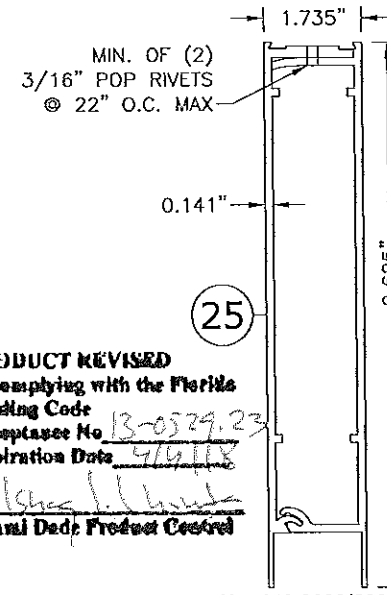
23 BOTTOM RAIL, O  
 N.T.S. 2-PIECE 6063-T6



96 BOTTOM RAIL, O  
 N.T.S. 1-PIECE 6063-T6



24 BOTTOM RAIL, SX/SO  
 N.T.S. 1-PIECE 6063-T6



25 BOTTOM RAIL, SX/SO  
 N.T.S. 2-PIECE 6063-T6

PRODUCT REVISED  
 to comply with the Florida  
 Building Code  
 Acceptance No. 13-0529.23  
 Expiration Date 4/6/18  
 By [Signature]  
 Miami Dade Product Control

ENGINEERING EXPRESS  
 160 SW 12th AVENUE, #106  
 DEERFIELD BEACH, FL 33442  
 PH: (954) 354-0660 FAX: (954) 354-0443  
 WWW.ENGEXP.COM  
 CERT OF AUTH #9885  
 A FRANK L. BENNARDO, P.E., INC. INNOVATION

**STANLEY**  
 ACCESS TECHNOLOGIES  
 65 SCOTT SWAMP ROAD, FARMINGTON, CT 06032  
 SERIES "DURA-STORM 2000/3000" AUTO SGD  
 BI-PARTING/SINGLE SLIDE (LMI)  
 MIAMI-DADE NOTICE OF ACCEPTANCE

REMARKS	DRWN	CHKD	DATE
INIT ISSUE	KL	FLB	07/01/12
REVIEWER COMMENT	KL	FLB	11/26/12
ADDL COMMENTS	KL	FLB	01/28/13
ADDL COMMENTS	KL	FLB	03/22/13
ADDL COMMENTS	KL	FLB	04/01/13
REV. PER TESTING	KL	FLB	05/17/13
ADDL COMMENTS	KL	FLB	08/07/13
ADDL COMMENTS	KL	FLB	10/03/13

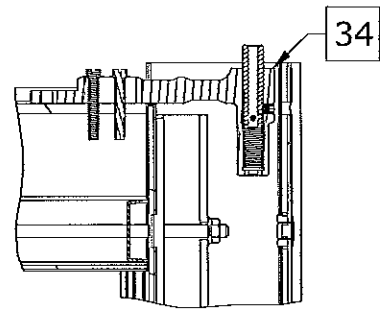
12-SAT-13

SCALE: 1/8" = 1'-0"

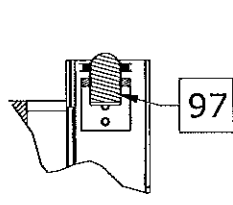
PAGE DESCRIPTION:

11

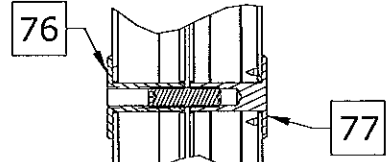
# DURA-STORM SERIES 2000/3000 DETAILS



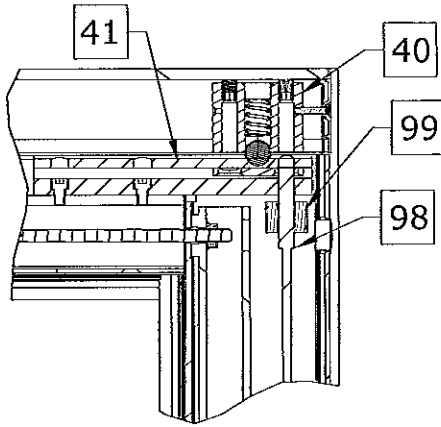
**A** SO PIVOT TOP  
NTS SERIES 3000



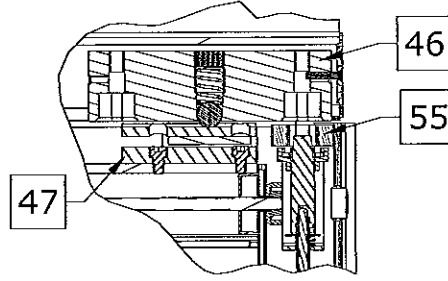
**P** SO PANEL  
BALL  
DETENT TOP  
NTS SERIES 3000



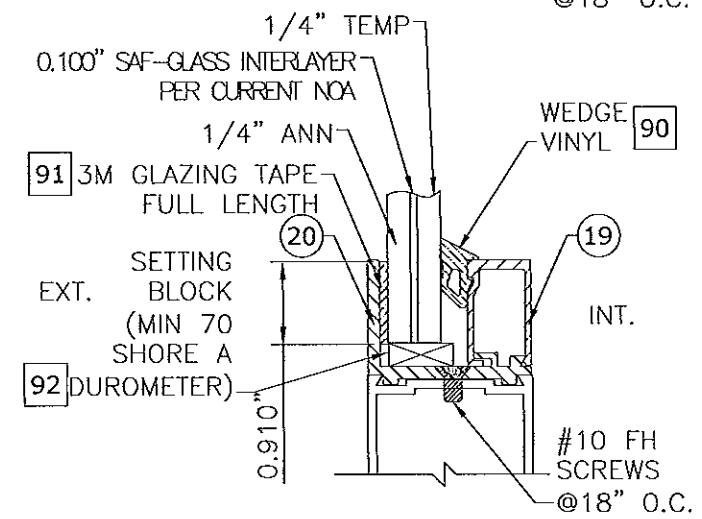
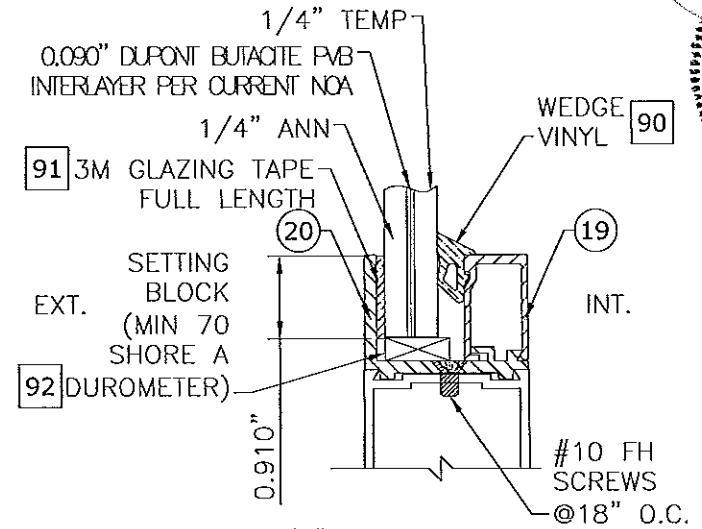
**R** SX/O WIND CLIP  
NTS SERIES 2000



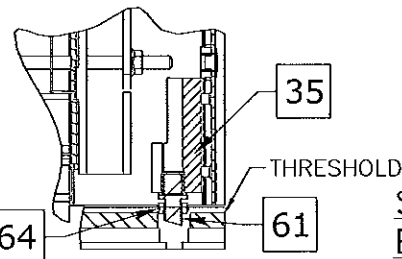
**F** STD BOLT TOP  
NTS SERIES 2000/3000



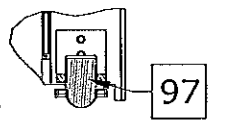
**G** PANIC BOLT TOP  
NTS 3000



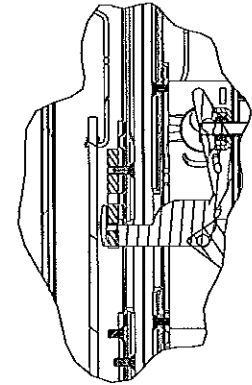
**O** O-PANEL ANGLE  
NTS SERIES 2000



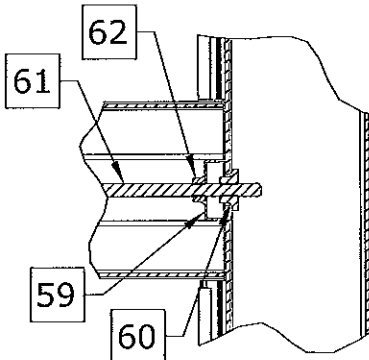
**B** SO PIVOT BOTTOM  
NTS SERIES 3000



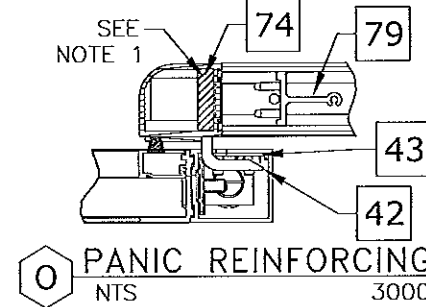
**Q** SO PANEL  
BALL  
DETENT  
BOTTOM  
NTS SERIES 3000



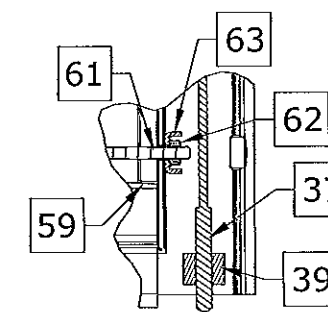
**N** 3-POINT  
LATCH DETAIL  
NTS SERIES 2000/3000



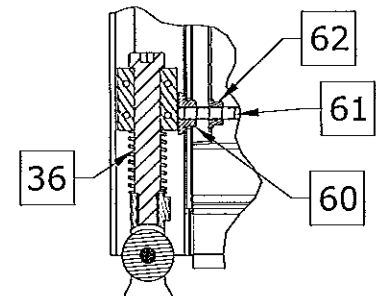
**M** MUNTIN DETAIL  
NTS SERIES 2000/3000



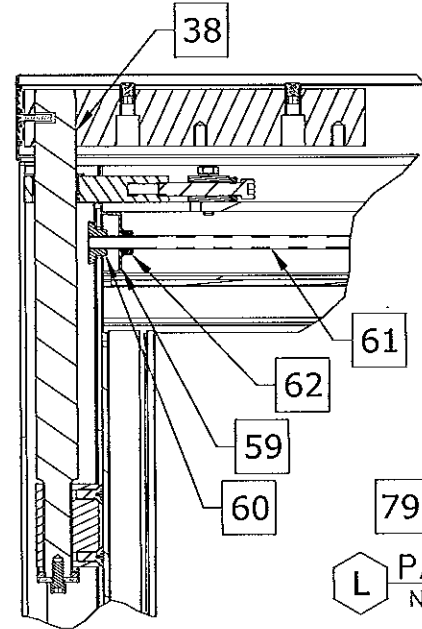
**O** PANIC REINFORCING  
NTS 3000



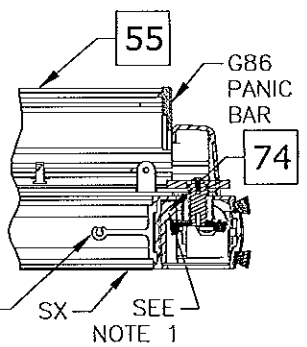
**E** STD BOLT BOTTOM  
NTS SERIES 2000/3000



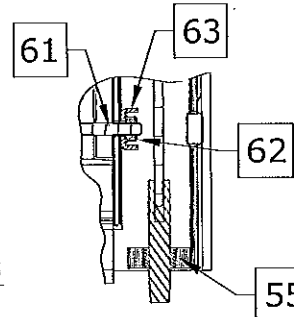
**C** SX GUIDE/PIVOT BOTTOM  
NTS SERIES 3000



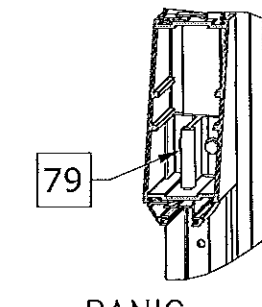
**D** SX PIVOT TOP  
NTS SERIES 2000/3000



**L** PANIC REINFORCING  
NTS 3000



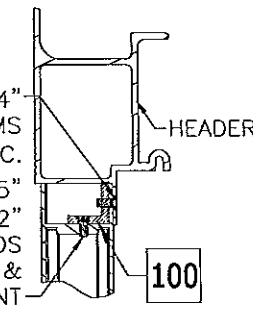
**H** PANIC BOLT BOTTOM  
NTS 3000



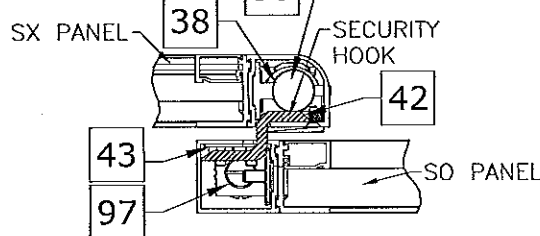
**V** PANIC  
MUNTIN DETAIL  
NTS 3000

**PRODUCT REVISED**  
as complying with the Florida  
Building Code  
Acceptance No. 3-0529-23  
Expiration Date 6/19/18

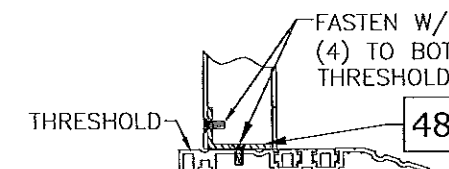
By [Signature]  
Miami Dade Product Control



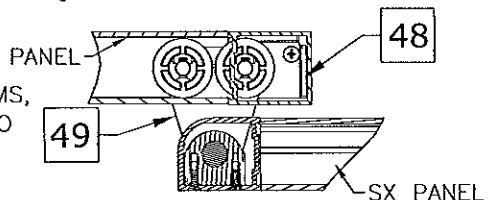
**O** O-PANEL ANGLE  
NTS SERIES 2000



**J** SECURITY HOOK  
NTS (SX-SO INTERLOCK)  
SERIES 3000



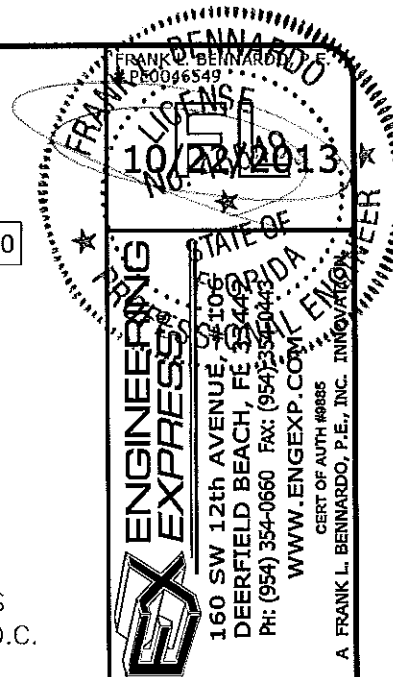
**I** O-PANEL BRACKET  
NTS SERIES 2000



**K** SX GUIDE/PIVOT BOTTOM  
NTS SERIES 2000  
(O-SX INTERLOCK)

**NOTES**

1. ITEM 74, "STEEL PLATE-PANIC REINFORCING", IS CONTAINED WITHIN VERTICAL STILE, HAS A MINIMUM LENGTH OF 48", AND IS CENTERED VERTICALLY ABOUT CENTERLINE OF HORIZONTAL MUNTIN. ITEM 74 IS FASTENED AS FOLLOWS: SINGLE ROW #10 X 32 X 1/2" FHTCMS @ 6" OC.



**ENGINEERING EXPRESS**  
160 SW 12th AVENUE, #206  
DEERFIELD BEACH, FL 33442  
PH: (954) 354-0660 FAX: (954) 354-4443  
WWW.ENGP.COM  
CERT. OF AUTH. #9885  
A FRANK L. BERNARDO, P.E., INC. INNOVATION

**STANLEY**

ACCESS TECHNOLOGIES  
65 SCOTT SWAMP ROAD, FARMINGTON, CT 06032  
SERIES "DURA-STORM 2000/3000" AUTO SGD  
BI-PARTING/SINGLE SLIDE (LMI)  
MIAMI-DADE NOTICE OF ACCEPTANCE

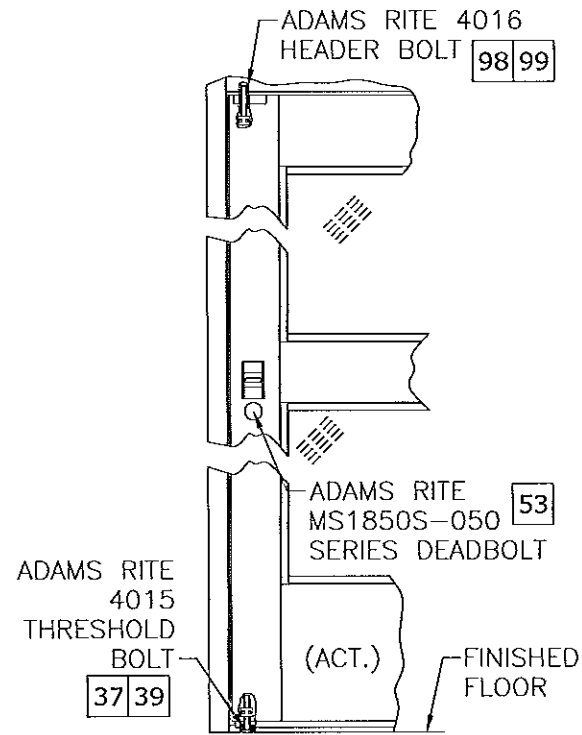
REMARKS	DRWN	CHKD	DATE
INT ISSUE	KL	FLB	07/01/12
REVIEWER COMMENT	KL	FLB	11/26/12
ADDL COMMENTS	KL	FLB	01/28/13
ADDL COMMENTS	KL	FLB	03/22/13
ADDL COMMENTS	KL	FLB	04/01/13
REV. PER TESTING	KL	FLB	06/17/13
ADDL COMMENTS	KL	FLB	08/07/13
ADDL COMMENTS	KL	FLB	10/03/13

12-SAT-13

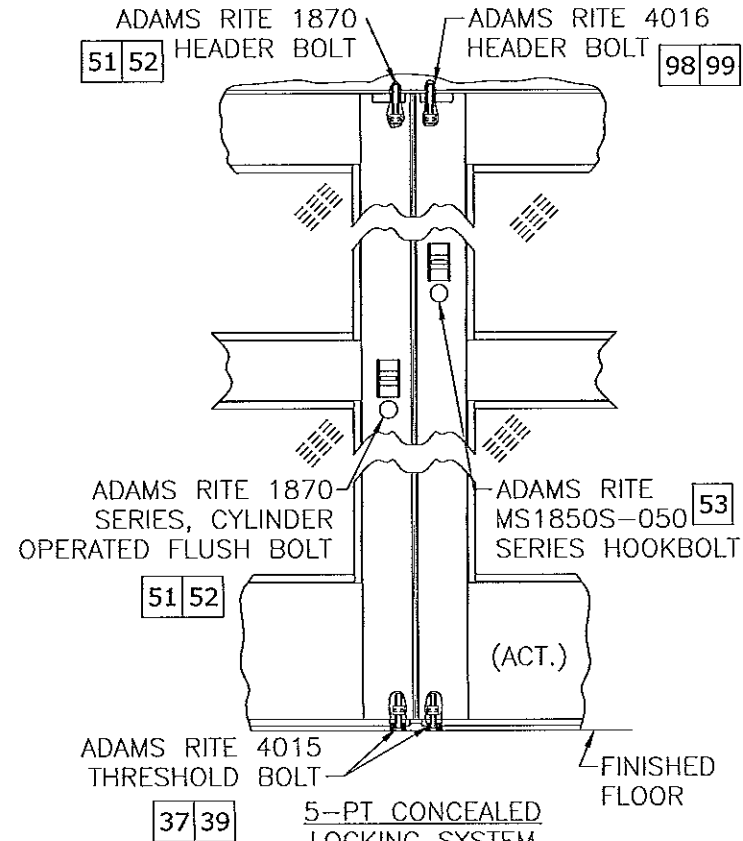
SCALE: 1/8" = 1'-0"

PAGE DESCRIPTION:

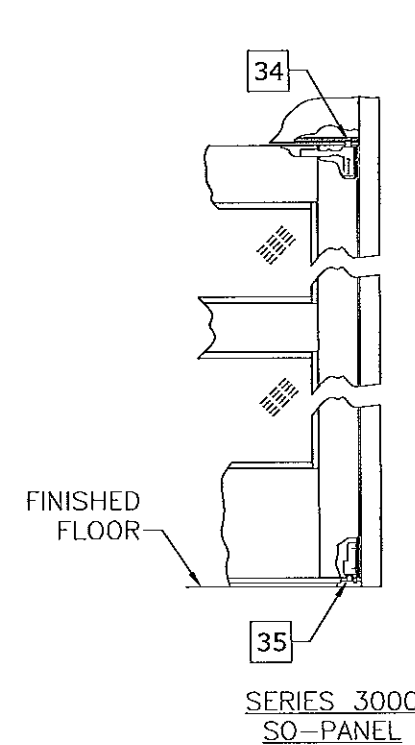
# DURA-STORM SERIES 2000/3000 LOCKING ARRANGEMENTS



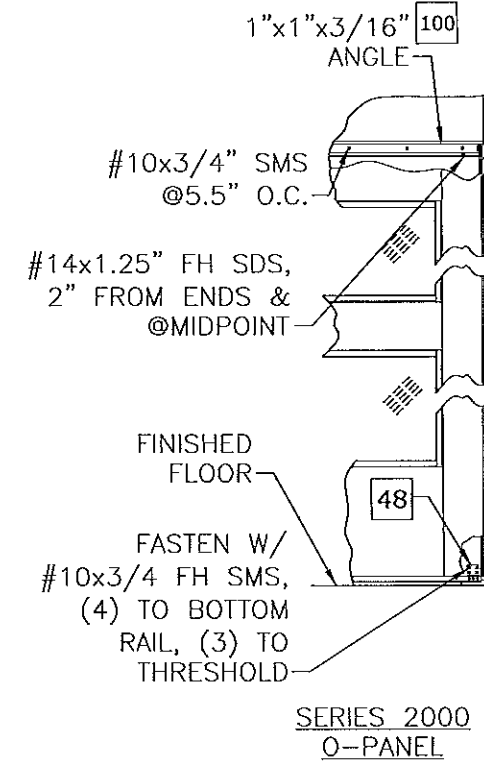
3-PT CONCEALED LOCKING SYSTEM  
SERIES 2000/3000  
SINGLE SLIDE



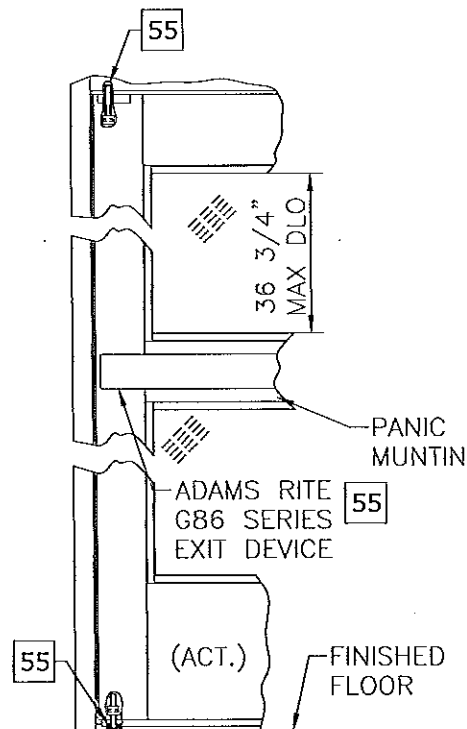
5-PT CONCEALED LOCKING SYSTEM  
SERIES 2000/3000  
BI-PARTING



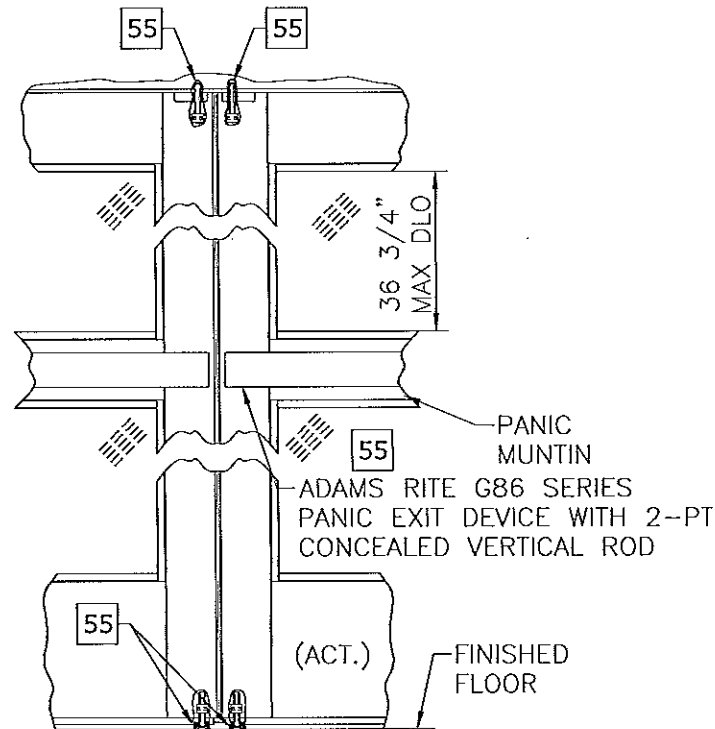
SERIES 3000  
SO-PANEL



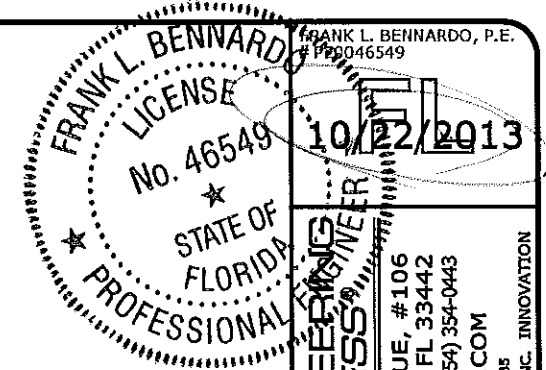
SERIES 2000  
O-PANEL



2-PT CONCEALED VERTICAL ROD WITH PANIC RELEASE LOCKING SYSTEM  
SERIES 3000  
SINGLE SLIDE



4-PT CONCEALED VERTICAL ROD WITH PANIC RELEASE LOCKING SYSTEM  
SERIES 3000  
BI-PARTING



**ENGINEERING EXPRESS**  
160 SW 12th AVENUE, #106  
DEERFIELD BEACH, FL 33442  
PH: (954) 354-0660 FAX: (954) 354-0443  
WWW.ENGEXP.COM  
CERT OF AUTH #9885  
A FRANK L. BENNARDO, P.E., INC. INNOVATION

**STANLEY**  
ACCESS TECHNOLOGIES  
65 SCOTT SWAMP ROAD, FARMINGTON, CT 06032  
SERIES "DURA-STORM 2000/3000" AUTO SGD  
BI-PARTING/SINGLE SLIDE (LMI)  
MIAMI-DADE NOTICE OF ACCEPTANCE

PRODUCT REVISED  
as complying with the Florida  
Building Code  
Acceptance No. 13-052923  
Expiration Date 7/4/18  
By: *[Signature]*  
Miami Dade Product Control

REMARKS	DRWN	CHKD	DATE
INT ISSUE	KL	FLB	07/01/12
REVIEWER COMMENT	KL	FLB	11/26/12
ADDT COMMENTS	KL	FLB	01/28/13
ADDT COMMENTS	KL	FLB	03/22/13
ADDT COMMENTS	KL	FLB	04/01/13
REV. PER TESTING	KL	FLB	05/17/13
ADDT COMMENTS	KL	FLB	08/07/13
ADDT COMMENTS	KL	FLB	10/03/13

12-SAT-13  
SCALE: 1/07  
PAGE DESCRIPTION:

# DURA-STORM SERIES 2000/3000 BILL OF MATERIALS

FRANK L. BENNARD, P.E.  
#PE0046549  
No. 46549  
10/22/2013  
STATE OF FLORIDA  
PROFESSIONAL ENGINEERING

REFERENCE	DESCRIPTION
1	Extrusion - Jamb - 4 1/2"
2	Extrusion - Jamb - 6"
3	Extrusion - Jamb - Insert
4	Extrusion - Header - 1 PC
5	Extrusion - Header - 2 PC
6	Extrusion - Header Cover -
7	Extrusion - Top Rail - SO
8	Extrusion - Top Rail - O
9	Extrusion - Top Rail - SX
10	Extrusion - Top Rail - SX
11	Extrusion - Stile, Narrow - Fixed
12	Extrusion - Stile, Medium - Lead
13	Extrusion - Stile, Narrow - Pivot
14	Extrusion - Stile, Medium - Pivot
15	Extrusion - Stile, Narrow - Lead
16	Extrusion - Stile, Medium - Lock
17	Extrusion - Muntin Bar/Stacked Bottom Rail Part - 2"
18	Extrusion - Muntin Bar - 4.25"
19	Extrusion - Glass Stop
20	Extrusion - Glass Gutter
21	Extrusion - Bottom Rail O - 4"
22	Extrusion - Bottom Rail SO/SX - 4"
23	Extrusion - Bottom Rail O - 10" - 2 PC
24	Extrusion - Bottom Rail SX/SO - 1 PC - 10"
25	Extrusion - Bottom Rail SX/SO - 2 PC - 10"
26	Extrusion - Hanger -
27	Extrusion - Threshold - Filler
28	Extrusion - Threshold - Dbl bevel - 6"
29	Extrusion - Threshold - Sq/Bvl - 6"
30	Extrusion - Threshold - Recessed - 4.5"
31	Extrusion - Threshold - Core
32	Extrusion - Threshold - Square
33	Extrusion - Threshold - Bevel
34	Component - Top Pivot - SO - 3000
35	Component - Bottom Pivot - SO - 3000
36	Component - Bottom Guide - SX- 3000
37	Component - Throw Bolt - Std - Adams Rite 4015
38	Component - Top pivot - SX
39	Component - Guide - Throw Bolt - Adams Rite 4015
40	Component - Ball Detent - Std
41	Component - Detent Block - Std
42	Component - Security Hook - Std
43	Component - Backing Plate - Security Hook

REFERENCE	DESCRIPTION
46	Component - Ball Detent
47	Component - Detent Block
48	Component - Bracket - O Panel
49	Component - Bottom Guide - SX - 2000
50	Component - Load Wheel - Steel/Aluminum/Plastic
51	Component - 2-PT Lock - Cylinder - Adams Rite 1870 Flushbolt, to be used with A.R. 4015 bottom bolt.
52	Component - 2-PT Lock - Thumb Turn - Adams Rite 1870 Flushbolt, to be used with A.R. 4015 bottom bolt.
53	Component - 8 Ply Hookbolt Lock - Single Action - Adams Rite MS1850S-050 (Deadbolt), Used w/ Adams Rite 4015 and 4016 Bolts
54	Component - Exit Indicator -
55	Component - 2-Pt Panic Device - Adams Rite G86 with concealed vertical rod (top/bottom) and latch assembly.
56	Component - Pile - Adhesive/non Adhesive backed
57	Component - Brush - Sweep
58	Component - Foam Block -
59	Hardware - Tie Rod - Plate
60	Hardware - Tie Rod - Nut - 5/16-18 - Steel
61	Hardware - Threaded Rod - 5/16-18 - Steel
62	Hardware - 5/16 - 18 - Nut - Steel
63	Hardware - Tie Rod / Rail - Plate - Steel
64	Hardware - 7/16-20 Jamb Nut - Steel
65	Hardware - 7/16 SO Pivot Pin - Steel
66	Hardware - 5/8-11 Nut - Steel
74	Component - Steel Plate - Panic Reinforcing (48" Min.)
75	Component - Key Operator - Adams Rite
76	Component - Lock Flange (Int) - "Wind Clip"
77	Component - Lock Flange (Ext) - "Wind Clip"
79	Component - Muntin Clip (with Panic)
90	Glazing - Wedge Vinyl - RM270864 by Trelleborg
91	Glazing - 3M Tape -
92	Glazing - Setting Block -
94	Extrusion - Key Strip
95	Extrusion - Threshold - Sq/Bvl - 4.5"
96	Extrusion - Bottom Rail O - 10"
97	Component - Ball Detent - SO
98	Component - Throw Bolt - Std - Adams Rite 4016
99	Component - Guide - Throw Bolt - Adams Rite 4016
100	Extrusion - 1"x1"x3/16" Angle

NON-CALL OUT PART #S FROM 44,45, 67-73, 78, 80-89 ARE NOT PART OF BOM

ENGINEERING EXPRESS, INC.  
160 SW 12th AVENUE, #306/INFER  
DEERFIELD BEACH, FL 33442  
PH: (954) 354-0660 FAX: (954) 354-0443  
WWW.ENGEXP.COM  
CERT OF AUTH #9885  
A FRANK L. BENNARD, P.E., INC. INNOVATION

**STANLEY**  
ACCESS TECHNOLOGIES  
65 SCOTT SWAMP ROAD, FARMINGTON, CT 06032  
SERIES "DURA-STORM 2000/3000" AUTO SGD  
BI-PARTING/SINGLE SLIDE (LMI)  
MIAMI-DADE NOTICE OF ACCEPTANCE

REMARKS	DRWN	CHKD	DATE
INIT ISSUE	KL	FLB	07/01/12
REVIEWER COMMENT	KL	FLB	11/28/12
ADDL COMMENTS	KL	FLB	01/28/13
ADDL COMMENTS	KL	FLB	03/22/13
ADDL COMMENTS	KL	FLB	04/01/13
REV. PER TESTING	KL	FLB	05/17/13
ADDL COMMENTS	KL	FLB	08/07/13
ADDL COMMENTS	KL	FLB	10/03/13

**PRODUCT REVISED**  
as complying with the Florida  
Building Code  
Acceptance No. 18-0529-23  
Expiration Date 08/04/2018  
By: Frank L. Bennard  
Miami Dade Product Control

12-SAT-13  
SCALE: 1/8" = 1'-0"  
PAGE DESCRIPTION: