

**GENERAL DESCRIPTION**

5' Protector XL Laboratory Hood, 31.7" Exterior Model: 111 50 0000

- \* Exterior Superstructure
- \* Double Wall Construction \* 18 Gauge Cold Rolled Steel
- \* Interior Superstructure
- \* Galvanized Steel (standard)
- \* Left / Right Facia:
- \* Powder Coated Steel \* Color: Glacier White
- \* Liner Material:
- \* Molded Composite Sheet
- \* Side Panels:
- \* Both Sides \* Removable \* Color: Glacier White
- \* Barriers
- \* Molded Composite Sheet
- \* Interior Access Panels
- \* Right and Left Sides
- \* Gasket Provided
- \* Corner Post with Access Covers
- \* Right and Left Sides
- \* 18 Gauge Cold Rolled Steel
- \* Air-Foil
- \* Cold Rolled Steel \* Powder Coat Finish
- \* Sash:
- \* Vertical Travel
- \* Tempered Safety Glass
- \* Counter Weighted and Balanced
- \* Pulley System
- \* Electrical Fixtures
- \* Fluorescent Light and Tubes w/ Switch
- \* Alarm / Monitor
- \* None Provided

- \* Wiring:
- \* Fume Hood Wired at Factory
- \* Electrical Connection mode inside 4x7 Junction Box
- \* 100-115V, 50/60 Hz
- \* VAV Preparations
- \* None Requested
- \* Service Fixtures
- \* None

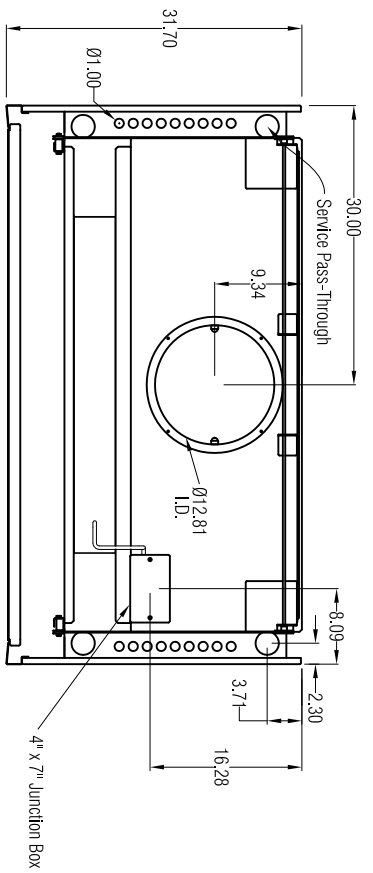
Face velocity (FPM) Sash at full open	Sash at 60%	Volumetric Rate (CFM) @ Static Pressure (inches H2O)
100	160	955, 0.34"
80	128	765, 0.22"
60	96	575, 0.12"
50*	80	480, 0.09"
40*	64	380, 0.05"

\*There is not a written standard that would suggest a design face velocity below 60 fpm. This data is for informational purposes only.

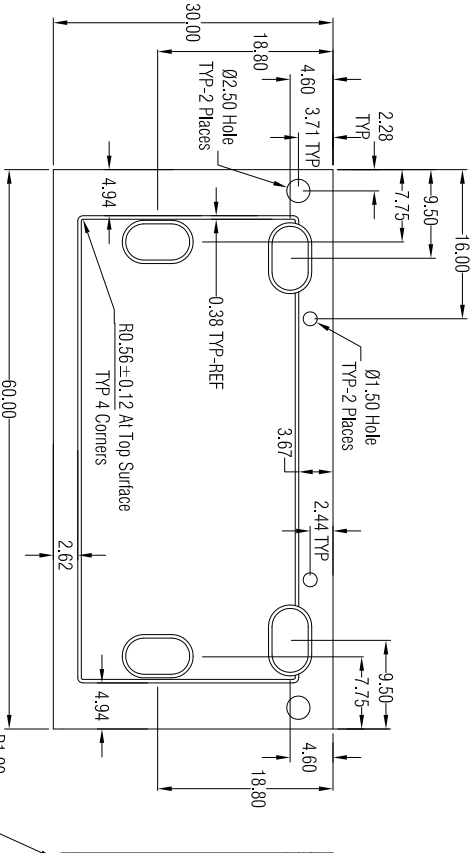
- \* Work Surface (Sold Separately)
- \* Black Epoxy Work Surface, Model 95005-XX (See below for XX)
- \* No cup sink # 00
- \* Cup Sink Right Rear # 01
- \* Cup Sink Right Side # 02
- \* Cup Sink Left Rear # 10
- \* Cup Sink Left Side # 20
- \* Cup Sink Left and Right Rear # 11
- \* Cup Sink Left and Right Side # 22
- \* Cup Sink (Sold Separately)
- \* 4005200

- \* Required Accessories (Sold Separately)
- \* Remote Blower
- \* Supporting Base
- \* Assembly and Crating
- \* Pre-Assembled
- \* Politeized

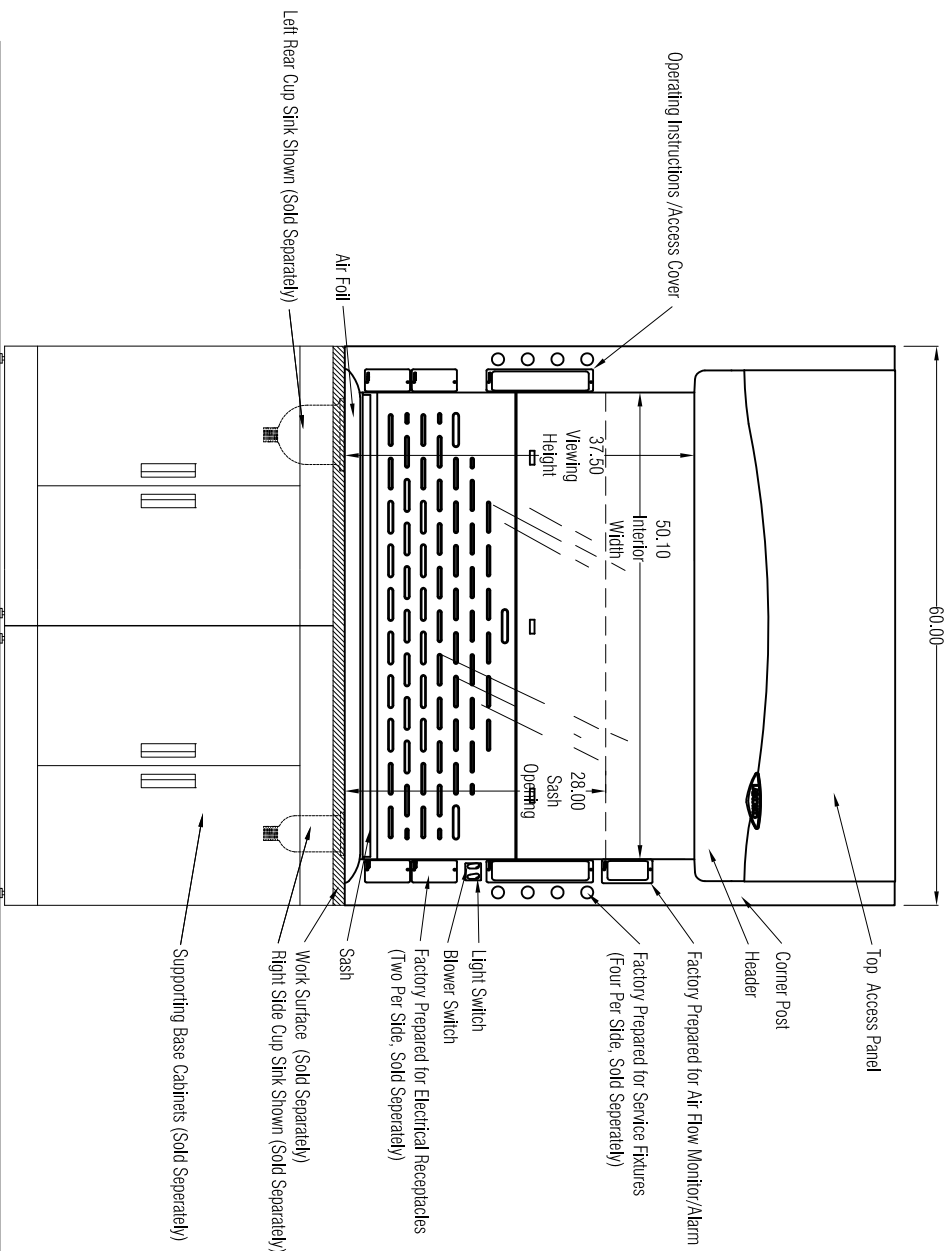
SCALE: Scaled to fit



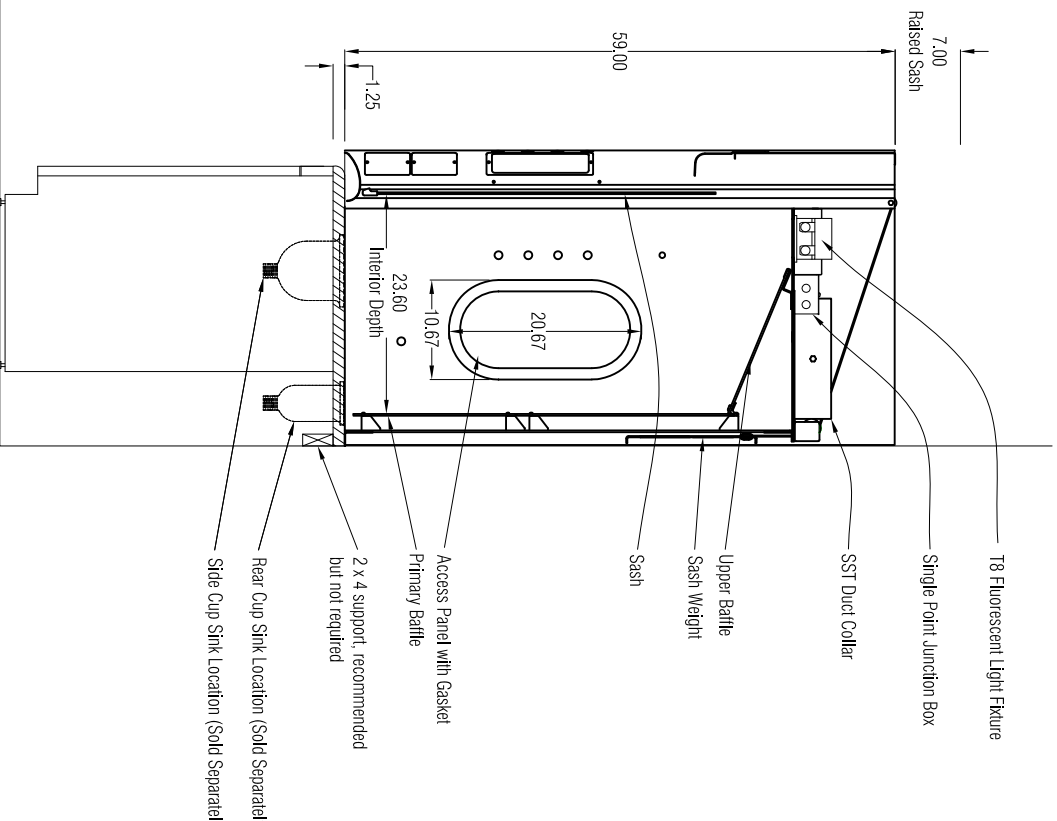
TOP VIEW



WORK SURFACE (Sold Separately) 95005-XX (See General Description for XX value) Model number varies based on sink location selection



FRONT VIEW



SIDE VIEW

SCALE: Scaled to fit

FUME HOODS for:



Labconco Corporation  
8611 Prospect Avenue  
Kansas City, Mo 64132-2696  
(800) 821-5525  
www.labconco.com

No. \_\_\_\_\_ Date \_\_\_\_\_

Date: 10-31-2012

Drawing # 111 50 0000

Drawn By: Luke Savage

Checked By: \_\_\_\_\_

Approved By: \_\_\_\_\_

Sheet No. \_\_\_\_\_