



**MIN-SPLIT SCHEDULE**

AIR HANDLER										CONDENSING UNIT									
Tag	Area Served	Nominal Tons	Make	Model	Cooling (MBH)	Heating (BTUH)	Power VAC	PH	Remarks	Tag	Make/Model	Rated Capacity (MBH)	Max Capacity (MBH)	Power VAC	PH	MCA	Remarks		
IU-100	S.T.E.M. Classroom 1	2	LG	LCN24	24	27	208	1	1, 2, 3, 4	CU-1	LG LMU480HV	48	58	208	1	27.3	1, 2		
IU-101	S.T.E.M. Classroom 2	2	LG	LCN24	24	27	208	1	1, 2, 3, 4	CU-2	LG LMU540HV	52.5	63.2	208	1	29.4	1, 2		
IU-LAB	Laboratory	1	LG	LCN12	12	13	208	1	1, 2, 3, 4	CU-3	LG LMU480HV	48	58	208	1	27.3	1, 2		
IU-102	S.T.E.M. Classroom 3	3	LG	LCN36	36	40	208	1	1, 2, 3, 4	CU-4	LG LMU480HV	48	58	208	1	27.3	1, 2		
IU-108	Classroom 3	2	LG	LCN24	24	27	208	1	1, 2, 3, 4										
IU-110	Classroom 3	2	LG	LCN24	24	27	208	1	1, 2, 3, 4										
IU-113	Classroom 4	2	LG	LCN24	24	27	208	1	1, 2, 3, 4										
IU-114	Classroom 2	2	LG	LCN24	24	27	208	1	1, 2, 3, 4										
IU-126	Classroom 5	2	LG	LCN24	24	27	208	1	1, 2, 3, 4										

- NOTES:**
- Cooling capacities to be rated in accordance with AHRI standard 210/290 for ASHRAE standard design weather conditions in New Orleans, LA.
  - Install units in accordance with manufacturer's recommendations, drawings and specifications.
  - Wired wall thermostat / controller in lockable cover.
  - Furnish with Condensate pump.

**DIFFUSER SCHEDULE**

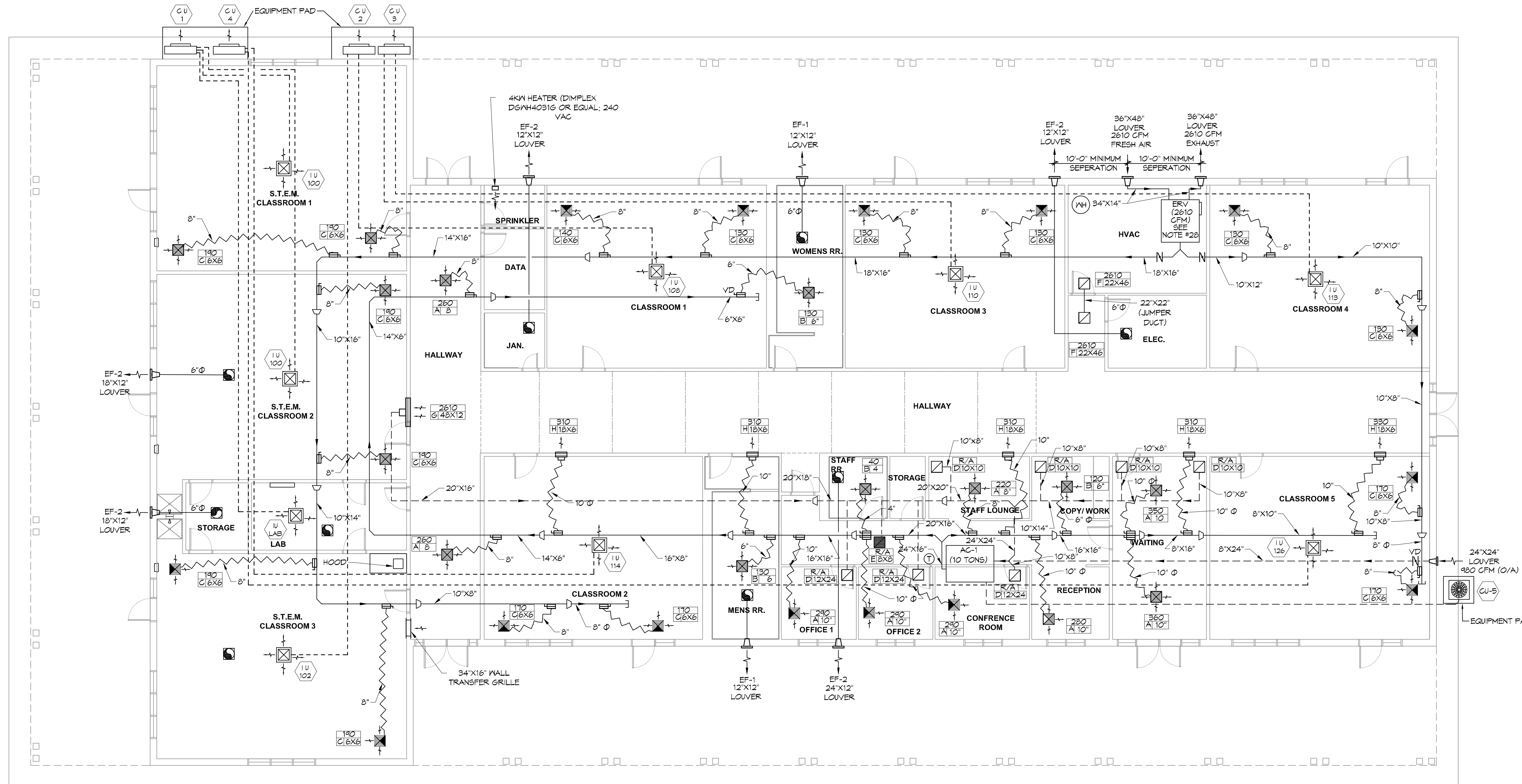
Mark No.	Service	Neck Size	Description
A	Supply Air	Ref. Plan	24" x 24" plaque diffuser, Titus "Omni" or equal
B	Supply Air	Ref. Plan	12" x 12" plaque diffuser, Titus "Omni" or equal
C	Supply Air	Ref. Plan	12" x 12" perforated flush face, Titus "PAS" or equal
D	Return Air	Ref. Plan	12" x 12" perforated flush face with damper, Titus "PAR" or equal
E	Return Air	Ref. Plan	24" x 24" perforated flush face with damper, Titus "PAR" or equal
F	ERV Return	Ref. Plan	24" x 48" perforated flush face with damper, Titus "PAR" or equal
G	Return Air	Ref. Plan	48" x 12" louvered face, Titus series 350 or equal
H	Supply Air	Ref. Plan	18" x 6" double deflection register, Titus series 300 or equal

- Coordinate with Architect / Owner for colors and finish.

**Exhaust Fan Schedule**

Tag	Fan					Power			Make / Model	Remarks	
	Airflow (CFM)	TSP ("wc)	Watts	H.P.	RPM	Type	Volts	Phase			Hz
EF-1	225	0.4	N/A	1/8	1160	Direct Drive Centrifugal	120	1	60	Twin City DCRW-083 or equal	1, 2, 3
EF-2	60	0.3	43	N/A	N/A	Direct Drive Centrifugal	120	1	60	Broan A80 or equal	1, 2, 4

- AMCA certified with Class I construction.
- Manual balancing damper
- Interlock with light switch
- Operate continuously



**MECHANICAL PLAN**  
SCALE: 1/8"=1'-0"

**GENERAL HVAC NOTES**

- CONCEALED DUCTWORK TO BE GALVANIZED SHEET METAL WRAPPED WITH FIBROUS GLASS DUCT WRAP WITH FSK VAPOR BARRIER, MIN R-6. INSTALLED PER SMACNA STANDARDS. DUCT WORK IMMEDIATELY DOWNSTREAM FROM RTU SHALL BE LINED FOR SOUND ATTENUATION.
- EXPOSED DUCTWORK TO BE GALVANIZED SHEET METAL LINED WITH FIBROUS GLASS DUCT LINER, MIN R-6. INSTALLED PER SMACNA STANDARDS.
- ROUND FLEXIBLE DUCT TO BE UL-181, CLASS 1, AIR DUCT MATERIALS.
- DUCT SIZES SHOWN ARE CLEAR INSIDE DIMENSIONS.
- IN ALL SYSTEMS OVER 2000 CFM AND LESS THAN 15,000 CFM, SMOKE DETECTORS SHALL BE INSTALLED IN ACCORDANCE WITH NFPA 72E IN THE RETURN DUCT DOWNSTREAM OF THE AIR HANDLING UNIT AND ALL FILTERS TO AUTOMATICALLY STOP THE FAN.
- PROVIDE UL LISTED 125 °F FIRESTAT IN RETURN AIR OF EACH SYSTEM UNDER 2000 CFM TO SHUT DOWN THE FAN IN THE EVENT OF FIRE.
- PROVIDE UL RATED FIRE DAMPERS WHERE REQUIRED AT ALL DUCT PENETRATIONS OF FIRE-RATED ASSEMBLIES AND WHERE REQUIRED BY CODE, INCLUDING OUTSIDE AIR INTAKES AND EXHAUST FANS.
- CONDENSATE DRAINS TO BE PVC PIPE RUN TO PLUMBERS P-TRAP WITHIN FIVE FEET OF AIR HANDLING UNITS.
- ALL AIR HANDLING SYSTEMS TO BE BALANCED TO ASSURE PROPER AIR FLOWS PER PLANS.
- ALL THERMOSTATS TO BE AUTOMATIC CHANGEOVER WITH HEAT SWITCH.
- EXHAUST FAN SHALL BE CONTROLLED BY A SWITCH ON THE WALL IN THE SAME LOCATION AS LIGHT SWITCH(S). PROVIDE BACK DRAFT DAMPER.
- PROVIDE AND INSTALL WATER PROOF GRILLE VENT IN PROPER ROOF LOCATION FOR PLUMBING FIXTURE EXHAUST.
- ALL SUPPLY AIR VENTS SHALL BE EQUIPPED WITH AIR CONTROL DAMPERS AT THE REGISTER.
- LOCATE OUTDOOR UNITS AS SHOWN ON ARCHITECTURAL DRAWINGS.
- REFRIGERANT LINES SHALL BE SIZED BY UNIT MANUFACTURER AND INSTALLED ACCORDING TO MANUFACTURER'S INSTRUCTIONS.
- FRESH AIR SHALL BE SUPPLIED TO EACH AIR HANDLER THROUGH EXTERIOR WALL DUCT SUPPLIED WITH A CONTROL DAMPER.
- ALL ELECTRICAL, MECHANICAL, AND PLUMBING PENETRATING FIRE WALLS SHALL BE FIRE CAULKED. (PENETRATIONS THROUGH RATED CONSTRUCTION SHALL BE SEALED WITH A MATERIAL CAPABLE OF PREVENTING THE PASSAGE OF FLAMES AND HOT GASES WHEN TESTED IN ACCORDANCE WITH ASTM-E814).
- ALL MECHANICAL SYMBOLS ARE DRAWN DIAGRAMMATICALLY. CONTRACTOR TO VERIFY WITH OWNER LOCATIONS OF VENTS, DAMPERS, REGISTERS, ETC.
- FLEXIBLE DUCTWORK LENGTH NOT TO EXCEED 12'-0".
- REFER TO REFLECTED CEILING PLAN FOR FINAL GRILLE AND DIFFUSER LOCATIONS AND COORDINATE AS REQUIRED.
- FINAL LOCATION OF TEMPERATURE CONTROLS TO BE COORDINATED WITH OWNER AT JOB SITE.
- PROVIDE AND INSTALL SMOKE DETECTORS AS APPROVED BY LOCAL A.H.J.S. PLACE NEAR R/A AND S/A OPENINGS OF AHU AND PROVIDE, WITH ACCESS PANEL, WIRING BY ELECTRICAL CONTRACTOR.
- FRESH AIR INTAKES ARE REQUIRED TO HAVE MOTORIZED OR GRAVITY DAMPERS TO SHUT OFF WHEN SYSTEM IS NOT RUNNING.
- PROVIDE BIRD SCREENS AT ALL EXTERIOR MECHANICAL PENETRATIONS.
- COORDINATE WALL MOUNTED THERMOSTAT LOCATIONS WITH ALL OWNER FURNISHED ITEMS EITHER WALL MOUNTED OR FLOOR MOUNTED AGAINST PARTITIONS. REFER TO ARCHITECTURAL DRAWINGS.
- SEE ROOF PLAN FOR ALL ROOF PENETRATIONS.
- PROVIDE MIN 18 GA GALVANIZED SHEET METAL TO BLANK-OFF GABLE VENTS WHERE INTAKE/EXHAUST DUCTS OCCUR.
- FANTECH ECHO E2800 ENERGY RECOVERY VENTILATOR, (240 VAC, SINGLE PHASE/12.2 AMP) INSTALL PER MANUFACTURER'S RECOMMENDATIONS

**LEGEND**

- SUPPLY GRILLE, 4 WAY
- SUPPLY GRILLE, 3 WAY
- RETURN GRILLE
- SUPPLY CASSETTE
- WALL SUPPLY
- EXHAUST FAN
- VARIABLE DAMPER
- FLEXIBLE DUCT
- THERMOSTAT

**DAMMON ENGINEERING, INC.**  
LOUISIANA & MISSISSIPPI  
Civil Engineers: Brian March, PE  
www.dammonengineering.com  
554 Old Spanish Trail  
Stuttgart, LA 70488  
Phone: 985.469.9532

#	DESCRIPTION	DATE

STATE OF LOUISIANA  
BRIAN A. MISTICH  
License No. 30787  
5/17/2019  
Professional Engineer

SHELL-ONLY PACKAGE  
CHRISTOPHER CLASSROOM  
90 CHRISTWOOD BOULEVARD  
COVINGTON, LA 70455  
JOB No: 2875 DATE: 05-17-2019  
DRAWN BY: JAGMVA CHECKED BY: CJK

SHEET TITLE:  
MECHANICAL PLAN  
DRAWING NUMBER:  
**M101**  
SHEET No: 8 of 12





