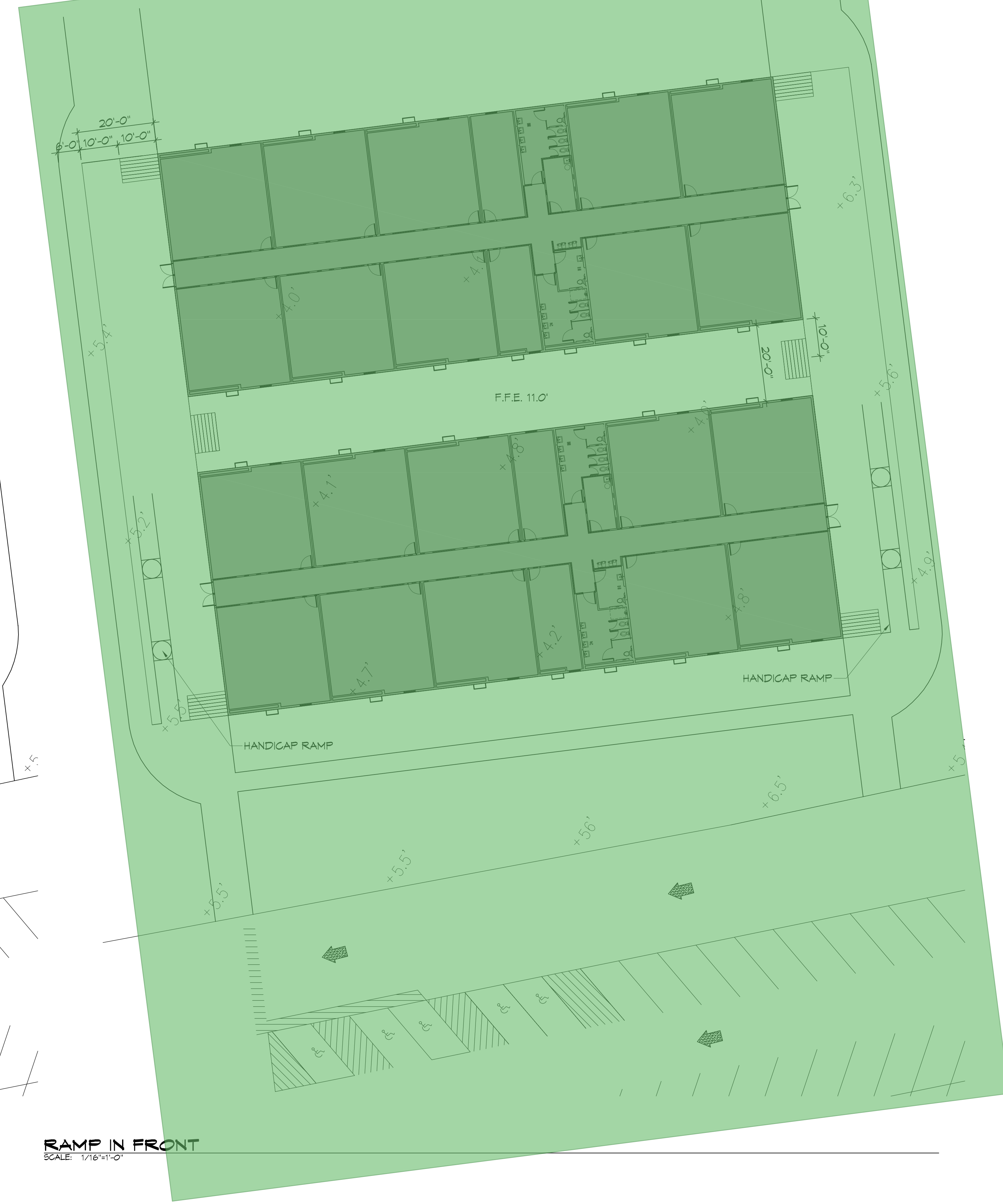


D:\E\NAME - J.V. - Schemas\Private\3440 - Lakeside Christian Academy\Current\3440\A102.rvt  
 Thursday, May 27, 2021 10:10 AM



**RAMP ON SIDE**  
SCALE: 1/16"=1'-0"



**RAMP IN FRONT**  
SCALE: 1/16"=1'-0"

COMMENTS
  DELETE
  ADD

**DAMMON**  
 ENGINEERING, INC.  
 LOUISIANA & MISSISSIPPI  
 Chief Engineer: Brian Abatch, PE  
 554 Old Spanish Trail  
 Slidell, LA 70458  
 www.dammonengineering.com  
 info@dammonengineering.com  
 PH: 985.649.5832 F: 985.641.1990

#	DESCRIPTION	DATE

--

**LAKESIDE**  
**CHRISTIAN**  
**ACADEMY**  
 3401 PONTCHARTRAIN DR.  
 SLIDELL, LA 70458  
 JOB No: 2440 DATE: 05-25-21  
 DRAWN BY: JAS  
 RLD CHECKED BY: JAS

SHEET TITLE:  
ADA ACCESSIBLE  
RAMP PLAN, SECTIONS,  
AND DETAILS

DRAWING NUMBER:  
**A102**