

DAMMON
ENGINEERING, INC.

CHIEF ENGINEER
EMMETT
DAMMON, P.E.
CHIEF ARCHITECT
ROBERT
WILTSE

1095 FLORIDA AVENUE
SLIDELL, LA. 70459
OFFICE: 985-649-5832
FAX: 985-641-5950

WEBSITE:
WWW.DAMMONENGINEERING.COM
EMAIL:
DAMMONENG@BELL.SOUTH.NET

ARCHITECTURE
ENGINEERING

STUDIES

PLANNING

INVESTIGATION

EXPERT WITNESS

HOLLY CROSS
SCHOOL
5500 PARIS AVENUE
NOLA 70122

BROADMOOR
2740 N. ARNOULT
METAIRIE
LOUISIANA
70002

STORM
WATER
PREVENTION
PLAN

REV:

SCALE: AS NOTED

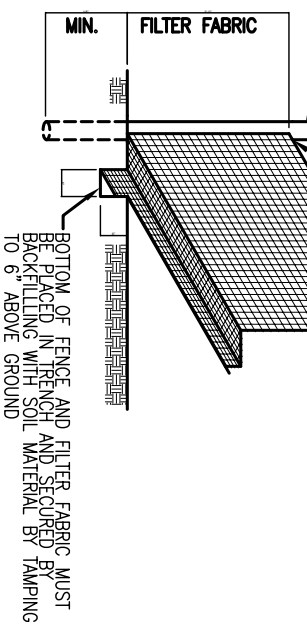
JOB#:

DATE: 09-24-09

SHEET 2

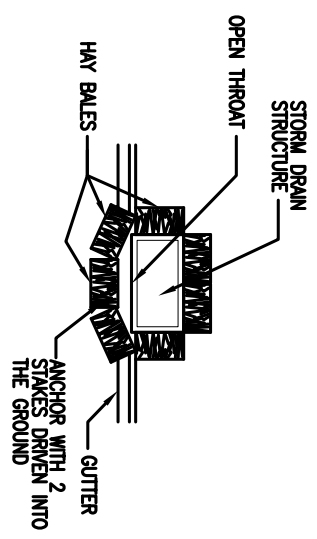
C-2

OF 2



SILT FENCE DETAIL 1
N.T.S.

- NOTES:
1. SILT FENCE SHOULD BE INSPECTED AFTER EACH RAINFALL AND SEDIMENT DEPOSITS MUST BE REMOVED WHEN THEY REACH 1/2 HEIGHT OF FENCE.
2. REMOVE WHEN GRASS IS ESTABLISHED.



HAY BALE DETAIL 2
N.T.S.

METHOD FOR SILT FENCE INSTALLATION

- 1) THE BASE OF BOTH END POSTS MUST BE AT LEAST 2'-4" ABOVE THE TOP OF THE SILT FENCE FABRIC ON THE MIDDLE POSTS FOR DITCH CHECKS TO DRAIN PROPERLY. USE A HAND LEVEL OR STRING LEVEL. IF NECESSARY, TO MARK BASE POINTS BEFORE INSTALLATION.
- 2) INSTALL POSTS 3-4 FEET APART IN CRITICAL WATER RETENTION AREAS AND 6-7 FEET APART ON STANDARD APPLICATIONS.
- 3) INSTALL POSTS 24" DEEP ON THE DOWNSTREAM SIDE OF THE SILT FENCE, AND AS CLOSE AS POSSIBLE TO THE FABRIC, EMBEDDING POSTS TO SUPPORT THE FABRIC FROM UPSTREAM WATER PRESSURE.
- 4) INSTALL POSTS WITH THE NIPPLES FACING AWAY FROM THE SILT FENCE FABRIC.
- 5) ATTACH THE FABRIC TO EACH POST WITH THREE TIES, ALL SPACED WITHIN THE TOP 8" OF THE FABRIC. ATTACH EACH TIE DIAGONALLY 45° THROUGH THE FABRIC, WITH EACH PUNCTURE AT LEAST 1" VERTICALLY APART. ADDITIONALLY, EACH TIE SHOULD BE POSITIONED TO HANG ON A POST NIPPLE WHEN TIGHTENED TO PREVENT SAGGING.
- 6) WRAP APPROXIMATELY 6" OF FABRIC AROUND THE END POSTS AND SECURE WITH 3 TIES.
- 7) NO MORE THAN 24" OF A 36" FABRIC IS ALLOWED ABOVE GROUND LEVEL.
- 8) THE INSTALLATION SHOULD BE CHECKED FOR ANY DEVIATIONS BEFORE COMPACTION. USE A FLAT-BLADED SHOVEL TO TUCK FABRIC DEEPER INTO THE SILT IF NECESSARY.
- 9) COMPACTION IS VITALLY IMPORTANT FOR EFFECTIVE RESULTS. COMPACT THE SOIL IMMEDIATELY NEXT TO THE SILT FENCE FABRIC WITH THE FRONT WHEEL OF THE TRACTOR, SKID STEER, OR ROLLER EXERCISING AT LEAST 80 PSI OF PRESSURE. COMPACT THE UPSTREAM SIDE FIRST, AND THEN EACH SIDE TWICE FOR A TOTAL OF FOUR TRIPS.

GRAVEL CONSTRUCTION ENTRANCE NOTES:

1. TEMPORARY SITE CONSTRUCTION ACCESS TO BE CONSTRUCTED BY SITE CONTRACTOR PRIOR TO BEGINNING CONSTRUCTION AND TO BE MAINTAINED UNTIL PERMANENT DRIVEWAY IS COMPLETE, LOT IS GRADED AND TURF IS ESTABLISHED.
2. 2" OR 3" WASHED STONE SHALL BE USED. PAD TO BE 50'X20'WX6"D AT A MINIMUM.
3. TURNING RADIUS SUFFICIENT TO ACCOMMODATE LARGE TRUCKS IS TO BE PROVIDED.
4. MAINTAIN IN A CONDITION WHICH WILL PREVENT TRACKING OR DIRECT FLOW OF MUD ONTO STREET. PERIODIC TOP DRESSING WITH STONE WILL BE NECESSARY. KEEP AVAILABLE.
5. ANY MATERIAL TRACKED ONTO THE ROAD SHALL BE CLEANED IMMEDIATELY.