

Catalog Number	
Notes	Type

FEATURES & SPECIFICATIONS

CONSTRUCTION — Weldable-grade, hot rolled, commercial-quality carbon steel tubing with a minimum yield of 42,000 psi. Uniform wall thickness of .120". Shaft is one piece with a full length, longitudinal, high-frequency electric resistance weld. Uniformly round in cross-section down length of shaft with no taper.

Anchor base is fabricated from hot rolled carbon steel plate (ASTM A-36), 3/4" thickness. Base plate and shaft are circumferentially welded at both the top and the bottom to provide maximum strength at the area of critical stress.

Reinforced handhole rim is located 18" above the base. Cover and attachment hardware provided.

Top cap provided with all drill-mount poles.

Fasteners are high-strength galvanized, zinc-plated or stainless steel.

Base cover is finished to match pole.

FINISH — Must specify finish.

GROUNDING — Provision located inside handhole rim. Grounding hardware is not included (provided by others).

ANCHOR BOLTS — Top portion of anchor bolt is galvanized per ASTM A-153. Made of steel rod having a minimum yield strength of 55,000 psi.



Anchor Base Poles

RSS

ROUND STRAIGHT STEEL

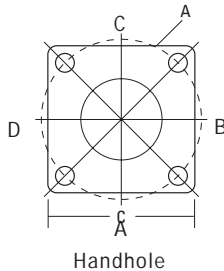
ORDERING INFORMATION

Lead times will vary depending on options selected. Consult with your sales representative.

Example: RSS 20 4-5B DM19 DDB

Series	Nominal fixture mounting height	Nominal shaft base size/wall thickness	Mounting ¹	Options	Finish ⁸
RSS	8 – 30 feet (See back page.)	(See back page.)	<u>Tenon mounting</u>	<u>Shipped installed</u>	<u>Standard colors</u>
			PT Open top	L/AB Less anchor bolts	DDB Dark bronze
			T20 2-3/8" O.D. (2" NPS)	FBC Full base cover	DWH White
			T25 2-7/8" O.D. (2-1/2" NPS)	VD Vibration damper	DBL Black
			T30 ² 3-1/2" O.D. (3" NPS)	TP Tamper proof	DMB Medium bronze
			T35 ² 4" O.D. (3-1/2" NPS)	H1-18Sxx Horizontal arm bracket (1 fixture) ^{4,5}	DNA Natural aluminum
			<u>Drill mounting³</u>	FDLxx Festoon outlet less electrical ⁴	GALV Galvanized finish
			DM19 1 at 90°	CPL12xx 1/2" coupling ⁴	<u>Classic colors</u>
			DM28 2 at 180°	CPL34xx 3/4" coupling ⁴	DSS Sandstone
			DM28PL 2 at 180° with one side plugged	CPL1xx 1" coupling ⁴	DGC Charcoal gray
			DM29 2 at 90°	NPL12xx 1/2" threaded nipple ⁴	DTG Tennis green
			DM29 2 at 90°	NPL34xx 3/4" threaded nipple ⁴	DBR Bright red
			DM32 3 at 120°	NPL1xx 1" threaded nipple ⁴	DSB Steel blue
			DM49 4 at 90°	EHHxx Extra handhole ^{4,6}	<u>Architectural colors</u> (powder finish) ⁸
			<u>AERIS™/OMERO™ Drill mounting³</u>		
			DM19AS 1 at 90°		
			DM28AS 2 at 180°		
			DM29AS 2 at 90°		
			DM32AS 2 at 120°		
			DM39AS 3 at 90°		
			DM49AS 4 at 90°		
			<u>AERIS™ Suspend drill mounting^{3,7}</u>		
			DMxxAST_		
			<u>OMERO™ Suspend drill mounting^{3,7}</u>		
			DMxxMRT_		

HANDHOLE ORIENTATION



NOTES:

- When ordering tenon mounting and drill mounting for the same pole, follow this example: DM28/T20. The combination includes a required extra handhole.
- T30 and T35 tenons available on 5" shafts only.
- The drilling template to be used for a particular luminaire depends on the luminaire that is used. Refer to the Technical Data Section of the Outdoor Binder for Drilling Templates.
- Specify location and orientation when ordering option.
For 1st "x": Specify the height in feet above base of pole.
Example: 5ft = 5 and 20ft = 20
For 2nd "x": Specify orientation from handhole (A,B,C,D)
Refer to the Handhole Orientation diagram above.
- Horizontal arm is 18" x 2-3/8" O.D. tenon standard.
- Combination of tenon-top and drill mount includes extra handhole.
- Insert "1" or "2" to designate fixture size; e.g. DM19AST2.
- Finish must be specified. Additional colors available; see www.lithonia.com/archcolors or Architectural Colors brochure (Form No. 794.3). Powder finish standard.

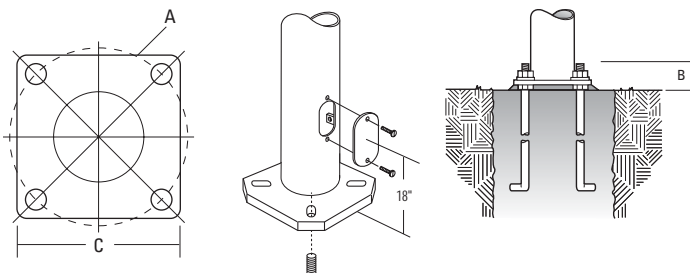
IMPORTANT INSTALLATION NOTES:

- Do not erect poles without having fixtures installed.
- Factory-supplied templates must be used when setting anchor bolts. Lithonia will not accept claim for incorrect anchorage placement due to failure to use factory template.
- If poles are stored outside, all protective wrapping must be removed immediately upon delivery to prevent finish damage.
- Lithonia is not responsible for the foundation design.

RSS Round Straight Steel Poles

TECHNICAL INFORMATION

Catalog Number	Nominal shaft length (feet)	Pole Shaft Size (in x ft)	Wall Thickness (inches)	EPA (ft ²) with 1.3 gust						Bolt Circle (inches)	Bolt Size (in. x in. x in.)	Approximate ship weight (pounds)
				80 mph	Max. weight	90 mph	Max. weight	100 mph	Max. weight			
RSS 8 4-5B	8	4.5 x 8.0	0.120	24.7	630	19.7	495	16.0	430	8	3/4 x 18 x 3	55
RSS 10 3B	10	3.0 x 10.0	0.120	10	250	7.7	190	6.0	175	8	3/4 x 18 x 3	55
RSS 10 4B	10	4.0 x 10.0	0.120	19.1	480	15.0	375	12.2	305	8	3/4 x 18 x 3	70
RSS 10 4-5B	10	4.5 x 10.0	0.120	24.5	615	19.5	490	15.8	395	8	3/4 x 18 x 3	75
RSS 12 3B	12	3.0 x 12.0	0.120	7.7	195	5.8	145	4.4	130	8	3/4 x 18 x 3	60
RSS 12 4B	12	4.0 x 12.0	0.120	15.0	390	11.8	300	9.5	240	8	3/4 x 18 x 3	80
RSS 12 4-5B	12	4.5 x 12.0	0.120	19.8	495	15.7	395	12.7	320	8	3/4 x 18 x 3	85
RSS 14 3B	14	3.0 x 14.0	0.120	6.0	175	4.4	130	3.3	90	8	3/4 x 18 x 3	70
RSS 14 4B	14	4.0 x 14.0	0.120	12.2	305	9.4	250	7.6	195	8	3/4 x 18 x 3	90
RSS 14 4-5B	14	4.5 x 14.0	0.120	16.2	405	12.8	320	10.3	260	8	3/4 x 18 x 3	95
RSS 15 4-5B	15	4.5 x 15.0	0.120	12.0	300	9.5	250	7.5	200	8	3/4 x 18 x 3	96
RSS 16 3B	16	3.0 x 16.0	0.120	4.6	125	3.2	100	2.3	60	8	3/4 x 18 x 3	80
RSS 16 4B	16	4.0 x 16.0	0.120	9.6	250	7.4	185	5.9	150	8	3/4 x 18 x 3	100
RSS 16 4-5B	16	4.5 x 16.0	0.120	13.1	330	10.2	265	8.2	205	8	3/4 x 18 x 3	105
RSS 18 3B	18	3.0 x 18.0	0.120	3.4	90	2.3	60	1.4	70	8	3/4 x 18 x 3	90
RSS 18 4B	18	4.0 x 18.0	0.120	7.6	190	5.7	180	4.5	130	8	3/4 x 18 x 3	110
RSS 18 4-5B	18	4.5 x 18.0	0.120	10.5	265	8.2	210	6.5	165	8	3/4 x 18 x 3	115
RSS 20 3B	20	3.0 x 20.0	0.120	2.4	100	1.4	75	--	--	8	3/4 x 18 x 3	100
RSS 20 4B	20	4.0 x 20.0	0.120	6.0	150	4.45	150	3.45	125	8	3/4 x 18 x 3	120
RSS 20 4-5B	20	4.5 x 20.0	0.120	8.5	215	6.6	165	5.2	130	8	3/4 x 18 x 3	130
RSS 20 5B	20	5.0 x 20.0	0.120	11.75	300	9.1	230	7.25	180	8	3/4 x 18 x 3	145
RSS 22 4-5B	22	4.5 x 22.0	0.120	6.0	150	4.5	125	3.75	100	8	3/4 x 18 x 3	134
RSS 25 4B	25	4.0 x 25.0	0.120	2.85	100	1.95	75	1.35	75	8	3/4 x 18 x 3	145
RSS 25 4-5B	25	4.5 x 25.0	0.120	4.8	130	3.6	90	2.7	90	8	3/4 x 18 x 3	145
RSS 25 5B	25	5.0 x 25.0	0.120	7.25	180	5.5	150	4.25	150	8	3/4 x 18 x 3	180
RSS 30 4-5B	30	4.5 x 30.0	0.120	2.3	80	1.5	75	1.0	60	8	3/4 x 18 x 3	185
RSS 30 5B	30	5.0 x 30.0	0.120	4.2	150	3	125	2.25	100	8	3/4 x 18 x 3	210



Pole Data						
Shaft base size	Bolt circle A	Bolt projection B	Base square	Template description	Anchor bolt description	
3"	8"	3.25" - 3.50"	8"	ABTEMPLATE PJ50041	AB18-0	
4"	8"	3.25" - 3.50"	8"	ABTEMPLATE PJ50041	AB18-0	
4.5"	8"	3.25" - 3.50"	8"	ABTEMPLATE PJ50041	AB18-0	
5"	8"	3.25" - 3.50"	8"	ABTEMPLATE PJ50041	AB18-0	

IMPORTANT:

- These specifications are intended for general purposes only. Lithonia reserves the right to change material or design, without prior notice, in a continuing effort to upgrade its products.