

NEW 3 SECTION ELEMENTARY SCHOOL  
AT FISK-HOWARD SCHOOL  
RECOVERY SCHOOL DISTRICT  
NEW ORLEANS, LOUISIANA 70119  
211 S. LOPEZ STREET

DATE ISSUED: 7 DECEMBER, 2012  
REVISED: ADDENDUM 01, 14 JANUARY 2013  
REVISED:  
REVISED:  
REVISED:  
DRAWN BY:  
CHECKED BY:  
PHASE:

BID DOCUMENTS

11085

TITLE:  
GRADING PLAN

SHEET:  
C1.02

DRAINAGE SCHEDULE

STRUCTURE NUMBER	STRUCTURE TYPE	GUTTER/CASTING ELEV	INVERT IN	ELEVATION OUT	PIPE LENGTH (FEET)	PIPE TYPE	PERCENT SLOPE
1	AREA INLET	-5.85	-7.84	-	-	-	-
1-2	-	-	-	-	40'	12" RCP	1.00%
2	EX. CURB	-6.22(EX)	-8.21(EX)	-8.21(EX)	-	-	-
2-3	-	-	-	-	-	-	-
3	AREA INLET	-5.00	-7.85	-7.85	-	-	-
3-4	-	-	-	-	47'	15"	0.50%
4	AREA INLET	-5.80	-8.09	-8.09	-	-	-
4-5	-	-	-	-	51'	15" RCP	0.50%
5	EX. CURB	-6.33(EX)	-8.35(EX)	-8.35(EX)	-	-	-

PIPE NOTES:

IN THE DRAINAGE CHART, THE "PIPE TYPE" COLUMN DEFINES THE SIZE & MATERIAL TYPE OF THE PIPE. WHERE A SPECIFIC PIPE TYPE IS CALLED FOR, THAT SPECIFIC PIPE TYPE MUST BE UTILIZED. WHERE AN ASTERISK (\*) IS SPECIFIED, THE CONTRACTOR MAY UTILIZE ANY ONE OF THE PIPE TYPES LISTED BELOW. THE #'S LISTED REFER TO THE FOLLOWING PIPE TYPES:  
1. REINFORCED CONCRETE PIPE (RCP/RCPA)  
2. HIGH DENSITY POLYETHYLENE PIPE (HDPE OR CPP)  
3. POLYVINYL CHLORIDE PIPE (PVC)  
NOTES:  
1. PRIOR TO UTILIZING THIS PIPE OPTION, THE CONTRACTOR SHALL BE RESPONSIBLE FOR DETERMINING THAT THE CMP PIPE HAS ADEQUATE COVER PER THE MANUFACTURER'S RECOMMENDATIONS.  
2. THE CONTRACTOR SHALL SUBMIT BUOYANCY CALCULATIONS ON ALL RUNS OF PIPE THAT DO NOT UTILIZE CONCRETE PIPE. BUOYANCY CALCULATIONS SHALL BE PREPARED, SIGNED, & SEALED BY A REGISTERED ENGINEER, SHALL REPRESENT ACTUAL FIELD CONDITIONS, & SHALL DEMONSTRATE THAT THE PIPE UTILIZED WILL NOT BECOME BUOYANT UNDER ANY CONDITIONS. THE CONTRACTOR MAY ELECT TO PROVIDE A RESTRAINING SYSTEM, DESIGNED BY A REGISTERED ENGINEER, ADEQUATE TO RESIST BUOYANT FORCES WHERE NECESSARY.

EXISTING LEGEND

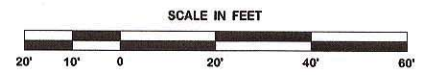
- SEWER LINE
- WATER LINE
- GAS LINE
- OVERHEAD UTILITY LINES
- GAS VALVE
- WATER METER
- WATER VALVE
- FIRE HYDRANT
- DRAIN CLEANOUT
- SEWER CLEANOUT
- POWER POLE
- ARCHWAY
- LIGHT POLE

LEGEND - NEW IMPROVEMENTS

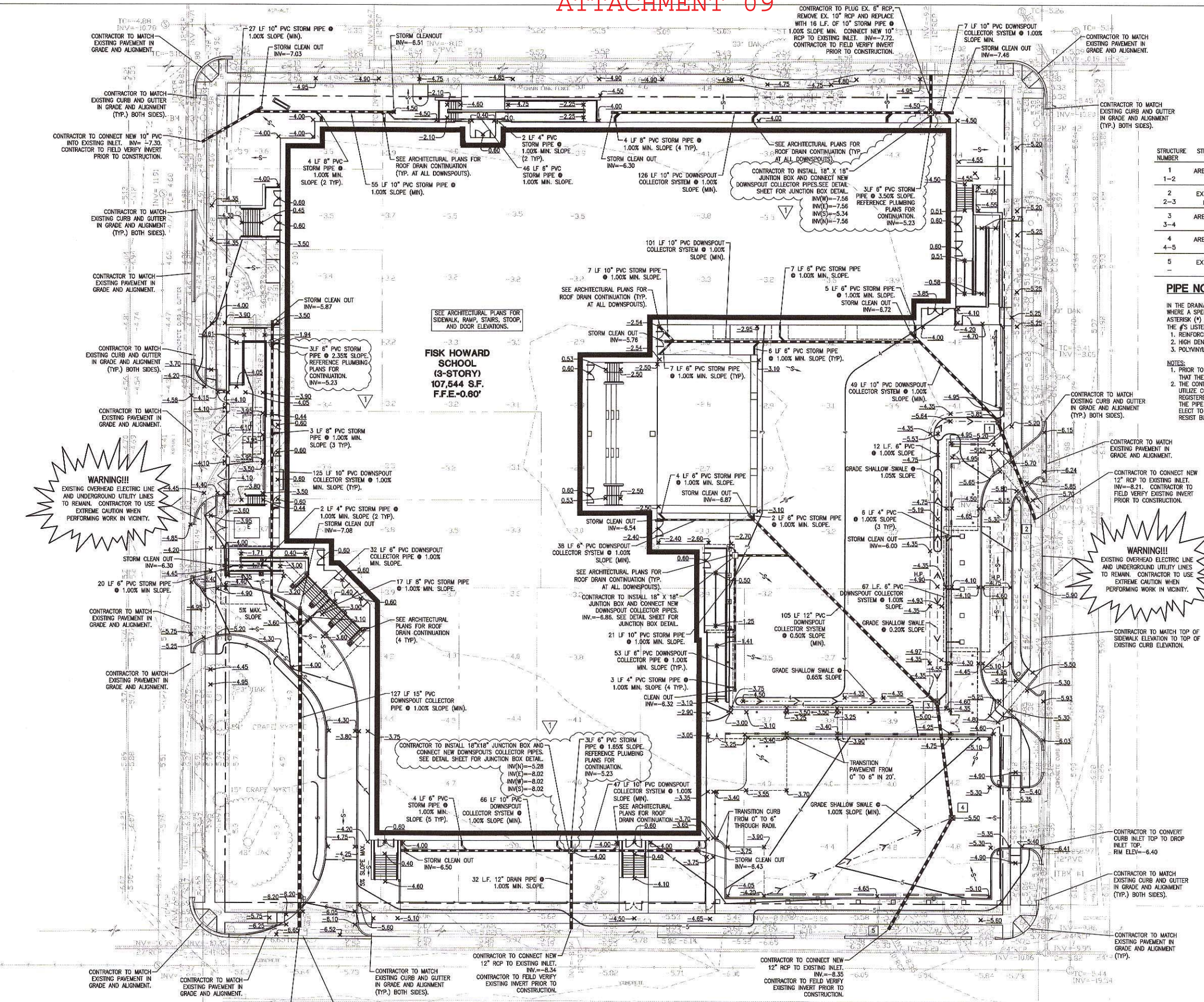
- SUBSURFACE DRAINAGE
- MANHOLE
- AREA INLET
- CLEANOUT
- CONTOUR
- SPOT ELEVATION
- SLOPE
- STRUCTURE NUMBER
- JUNCTION BOX

NOTES:

- SEE SHEET C0.02 FOR DEMOLITION PLAN.
- SEE SHEET C1.01 FOR SITE PLAN.
- SEE SHEET C1.04 FOR UTILITY PLAN.
- SEE SHEET C1.05 FOR PAVING PLAN.
- SEE SHEET C1.06 FOR EROSION CONTROL PLAN.
- SEE SHEET C2.01 FOR GENERAL NOTES AND RCP STORM PIPE SCHEDULE.
- SEE SHEETS C2.02 THROUGH C3.03 FOR DETAILS.



DDG DUPLANTIS DESIGN GROUP, PC  
CIVIL ENGINEERING & ARCHITECTURE  
34 LOUIS PRIMA DRIVE COVINGTON, LA 70433  
WWW.DDGPC.COM PHONE 985-249-6180 FAX 985-249-6190  
THIBODAUX | COVINGTON | HOUSTON | BATON ROUGE | LOUISIANA  
DDG PROJECT NO. 12-206



**WARNING!!**  
EXISTING OVERHEAD ELECTRIC LINE AND UNDERGROUND UTILITY LINES TO REMAIN. CONTRACTOR TO USE EXTREME CAUTION WHEN PERFORMING WORK IN VICINITY.

**WARNING!!**  
EXISTING OVERHEAD ELECTRIC LINE AND UNDERGROUND UTILITY LINES TO REMAIN. CONTRACTOR TO USE EXTREME CAUTION WHEN PERFORMING WORK IN VICINITY.

CALL LOUISIANA ONE CALL - 1-800-272-3020  
LOUISIANA STATE LAW, SECTION 15:401(749.15), REQUIRES EXCAVATORS & DEMOLISHERS TO NOTIFY A REGIONAL NOTIFICATION CENTER BY TELEPHONE 48 HOURS IN ADVANCE OF ANY EXCAVATION OR DEMOLITION ACTIVITY. THE OWNERS/OPERATORS OF ANY UNDERGROUND FACILITY MUST THEN MARK THE AREA OR PROVIDE INFORMATION THAT WILL ENABLE AN EXCAVATOR OR DEMOLISHER TO DETERMINE THE LOCATION OF UNDERGROUND FACILITIES.