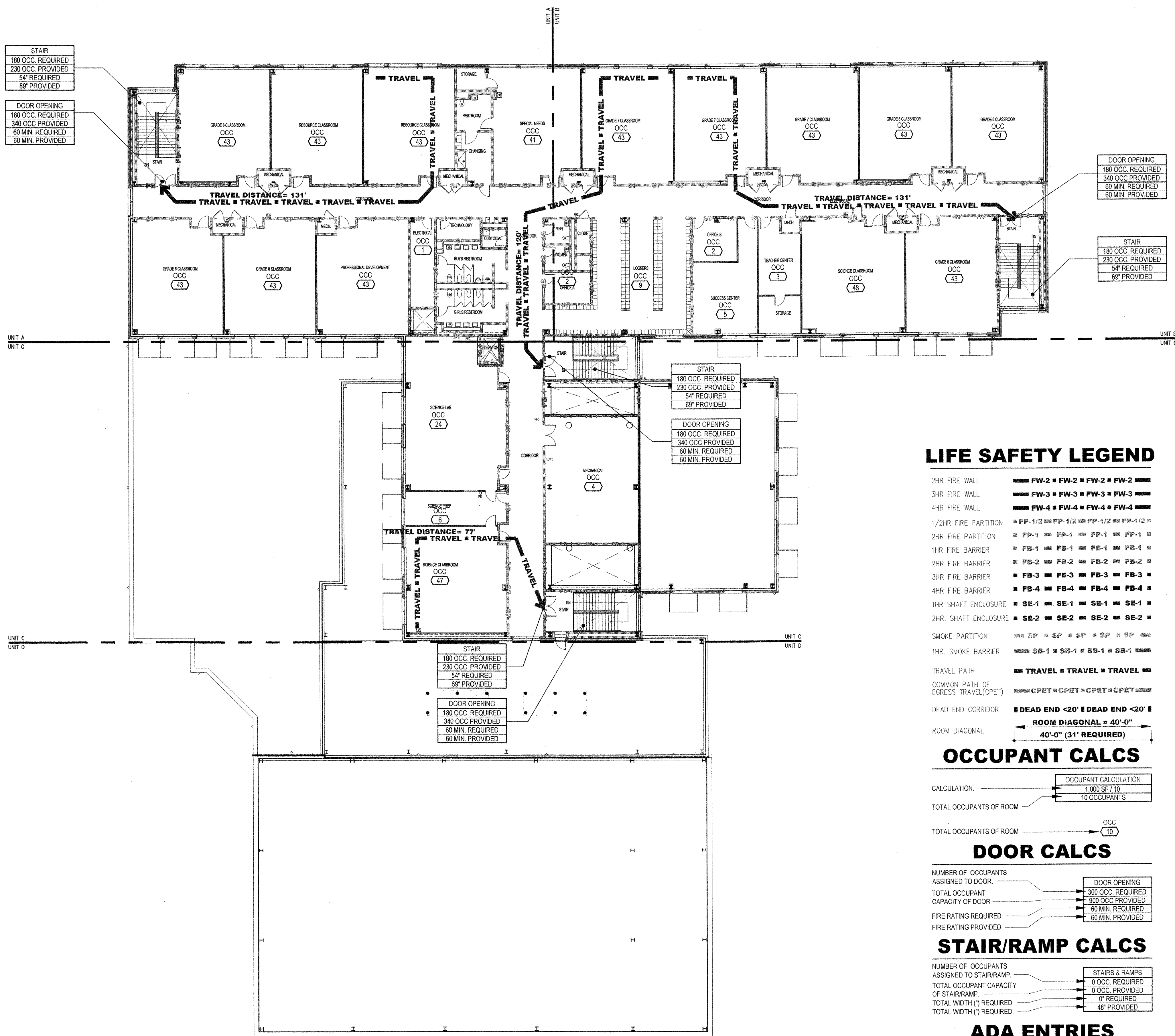




**NEW 3 SECTION ELEMENTARY SCHOOL  
AT FISK-HOWARD SCHOOL  
RECOVERY SCHOOL DISTRICT**  
NEW ORLEANS, LOUISIANA 70119  
211 S. LOPEZ STREET



STAIR  
180 OCC. REQUIRED  
230 OCC. PROVIDED  
5'4\"

DOOR OPENING  
180 OCC. REQUIRED  
340 OCC. PROVIDED  
60 MIN. REQUIRED  
60 MIN. PROVIDED

STAIR  
180 OCC. REQUIRED  
230 OCC. PROVIDED  
5'4\"

STAIR  
180 OCC. REQUIRED  
230 OCC. PROVIDED  
5'4\"

DOOR OPENING  
180 OCC. REQUIRED  
340 OCC. PROVIDED  
60 MIN. REQUIRED  
60 MIN. PROVIDED

STAIR  
180 OCC. REQUIRED  
230 OCC. PROVIDED  
5'4\"

**CODE DATA:**

PROJECT LOCATION: FISK HOWARD SCHOOL  
211 SOUTH LOPEZ STREET  
NEW ORLEANS, LOUISIANA 70119

OWNER: RECOVERY SCHOOL DISTRICT  
NEW ORLEANS, LOUISIANA

NUMBER OF STORIES: 3 STORIES

BUILDING HEIGHT: 46'-8" (1ST FL. SLAB TO TOP OF ROOF SLAB)

BUILDING SQUARE FOOTAGE (TOTAL): 110,434 SF.

BUILDING SQUARE FOOTAGE (FLOOR):  
1ST FLOOR = 51,223 SF.  
2ND FLOOR = 34,494 SF.  
3RD FLOOR = 24,717 SF.  
TOTAL = 110,434 SF.

CODE ISSUE: STATE OF LOUISIANA  
NFPA 101 2009 CITY OF NEW ORLEANS  
IBC 2009

BUILDING TYPE: TYPE II (0,0,0), SPRINKLED TYPE II B, SPRINKLED  
(AREA MODIFICATION FORMULA USED  
(1506), FRONTAGE & SPRINKLER)

MAIN OCCUPANCY: EDUCATION EDUCATION "E"

OCCUPANCY TYPES AND OCCUPANT LOAD PER OCCUPANCY:

| FLOOR                         | ASSEMBLY                     | EDUCATION         | BUSINESS          | MECHANICAL | LABORATORY | OFFICE | RECREATION | STORAGE           |
|-------------------------------|------------------------------|-------------------|-------------------|------------|------------|--------|------------|-------------------|
| FIRST FLOOR:                  | ASSEMBLY A2                  | NSF/7             | 653 OCC.          |            |            |        |            |                   |
|                               | ASSEMBLY A4                  | NSF/7             | 1,376 OCC.        |            |            |        |            |                   |
|                               | BUSINESS                     | GSF/100           | 43 OCC.           |            |            |        |            |                   |
|                               | EDUCATION                    | NSF/20            | 448 OCC.          |            |            |        |            |                   |
|                               | FAC. LOUNGE                  | LAYOUT            | 20 OCC.           |            |            |        |            |                   |
|                               | GYM CORE                     | GSF/100           | 35 OCC.           |            |            |        |            |                   |
|                               | KITCHEN                      | GSF/100           | 46 OCC.           |            |            |        |            |                   |
|                               | <b>FIRST FLOOR SUBTOTAL:</b> |                   | <b>2,621 OCC.</b> |            |            |        |            |                   |
| SECOND FLOOR:                 | ASSEMBLY A3                  | GSF/100           | 28 OCC.           |            |            |        |            |                   |
|                               | ASSEMBLY A3                  | LAYOUT            | 94 OCC.           |            |            |        |            |                   |
|                               | BUSINESS                     | GSF/100           | 21 OCC.           |            |            |        |            |                   |
|                               | EDUCATION                    | NSF/20            | 555 OCC.          |            |            |        |            |                   |
|                               | EDUCATION                    | NSD/50            | 64 OCC.           |            |            |        |            |                   |
|                               | EDUCATION                    | NSF/20            | 128 OCC.          |            |            |        |            |                   |
| <b>SECOND FLOOR SUBTOTAL:</b> |                              | <b>899 OCC.</b>   |                   |            |            |        |            | <b>899 OCC.</b>   |
| THIRD FLOOR:                  | BUSINESS                     | GSF/100           | 14 OCC.           |            |            |        |            |                   |
|                               | EDUCATION                    | NSF/20            | 652 OCC.          |            |            |        |            |                   |
|                               | EDUCATION                    | NSD/50            | 30 OCC.           |            |            |        |            |                   |
|                               | LOCKER COM.                  | GSF/50            | 19 OCC.           |            |            |        |            |                   |
| <b>THIRD FLOOR SUBTOTAL:</b>  |                              | <b>719 OCC.</b>   |                   |            |            |        |            | <b>719 OCC.</b>   |
| <b>OCCUPANT LOAD TOTAL:</b>   |                              | <b>4,239 OCC.</b> |                   |            |            |        |            | <b>4,239 OCC.</b> |

OCCUPANCY SEPARATION

| MIXED (NON-SEPARATED) OCCUPANCIES     | SEPARATED OCCUPANCIES |
|---------------------------------------|-----------------------|
| SUPERVISED AUTOMATIC SPRINKLER SYSTEM | YES                   |
| FIRE ALARM SYSTEM                     | YES                   |
| VERTICAL OPENINGS                     |                       |
| ATRIUMS                               | NO                    |
| COMMUNICATING                         | NO                    |
| CONVENIENCE                           | NO                    |

ADA ENTRY DATA

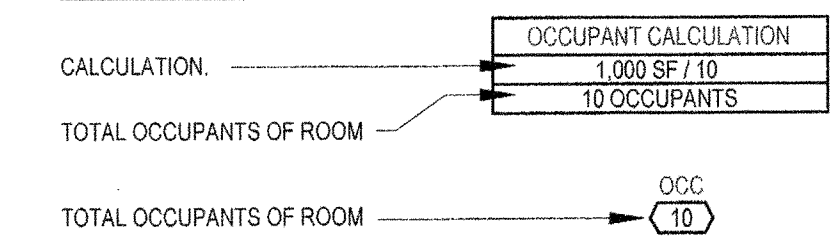
|   |      |      |
|---|------|------|
| NUMBER OF PUBLIC ENTRANCES                                  | 3    | 3    |
| NUMBER OF PUBLIC ADA ENTRANCES PROVIDED                     | 3    | 3    |
| PERCENT OF ADA PUBLIC ENTRANCES PROVIDED (60% ADA REQUIRED) | 100% | 100% |

ADDITION DATA:  
REFER TO SHEETS A6.21, A6.22, A6.23 FOR PARTITION TYPES AND RELATED CODE DATA.  
REFER TO SHEETS A8.00 FOR DOOR SCHEDULE AND RELATED CODE DATA.

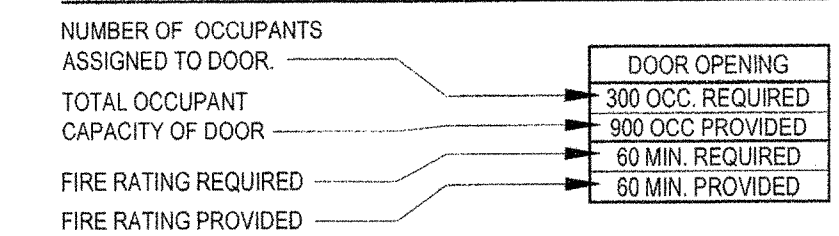
**LIFE SAFETY LEGEND**

- 2HR FIRE WALL: FW-2 ■ FW-2 ■ FW-2 ■ FW-2 ■
- 3HR FIRE WALL: FW-3 ■ FW-3 ■ FW-3 ■ FW-3 ■
- 4HR FIRE WALL: FW-4 ■ FW-4 ■ FW-4 ■ FW-4 ■
- 1/2HR FIRE PARTITION: FP-1/2 ■ FP-1/2 ■ FP-1/2 ■ FP-1/2 ■
- 2HR FIRE PARTITION: FP-1 ■ FP-1 ■ FP-1 ■ FP-1 ■
- 1HR FIRE BARRIER: FB-1 ■ FB-1 ■ FB-1 ■ FB-1 ■
- 2HR FIRE BARRIER: FB-2 ■ FB-2 ■ FB-2 ■ FB-2 ■
- 3HR FIRE BARRIER: FB-3 ■ FB-3 ■ FB-3 ■ FB-3 ■
- 4HR FIRE BARRIER: FB-4 ■ FB-4 ■ FB-4 ■ FB-4 ■
- 1HR SHAFT ENCLOSURE: SE-1 ■ SE-1 ■ SE-1 ■ SE-1 ■
- 2HR SHAFT ENCLOSURE: SE-2 ■ SE-2 ■ SE-2 ■ SE-2 ■
- SMOKE PARTITION: SP ■ SP ■ SP ■ SP ■
- 1HR SMOKE BARRIER: SB-1 ■ SB-1 ■ SB-1 ■ SB-1 ■
- TRAVEL PATH: TRAVEL ■ TRAVEL ■ TRAVEL ■
- COMMON PATH OF EGRESS TRAVEL (CPET): CPET ■ CPET ■ CPET ■
- DEAD END CORRIDOR: DEAD END <20' ■ DEAD END <20' ■
- ROOM DIAGONAL: ROOM DIAGONAL = 40'-0" ■ ROOM DIAGONAL = 40'-0" ■

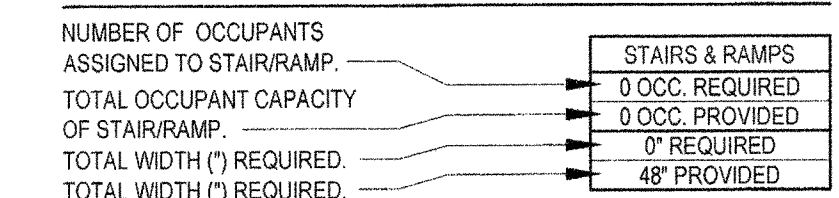
**OCCUPANT CALCS**



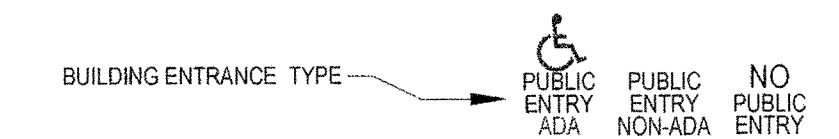
**DOOR CALCS**



**STAIR/RAMP CALCS**



**ADA ENTRIES**



DATE ISSUED: 7 DECEMBER, 2012  
REVISOR:  
REVISOR:  
REVISOR:  
REVISOR:  
DRAWN BY: ELR, RP8, CMB  
CHECKED BY: DGR, JFM  
PHASE:

BID DOCUMENTS

11085

TITLE:  
LIFE SAFETY PLAN  
OVERALL 3TH FLOOR

SHEET:

A0.06