

**NEW 3 SECTION ELEMENTARY SCHOOL
AT FISK-HOWARD SCHOOL
RECOVERY SCHOOL DISTRICT**

211 S. LOPEZ STREET NEW ORLEANS, LOUISIANA 70119

DATE ISSUED: 7 DECEMBER, 2012
REVISED:
REVISED:
REVISED:
REVISED:
DRAWN BY: MKS
CHECKED BY:
PHASE:

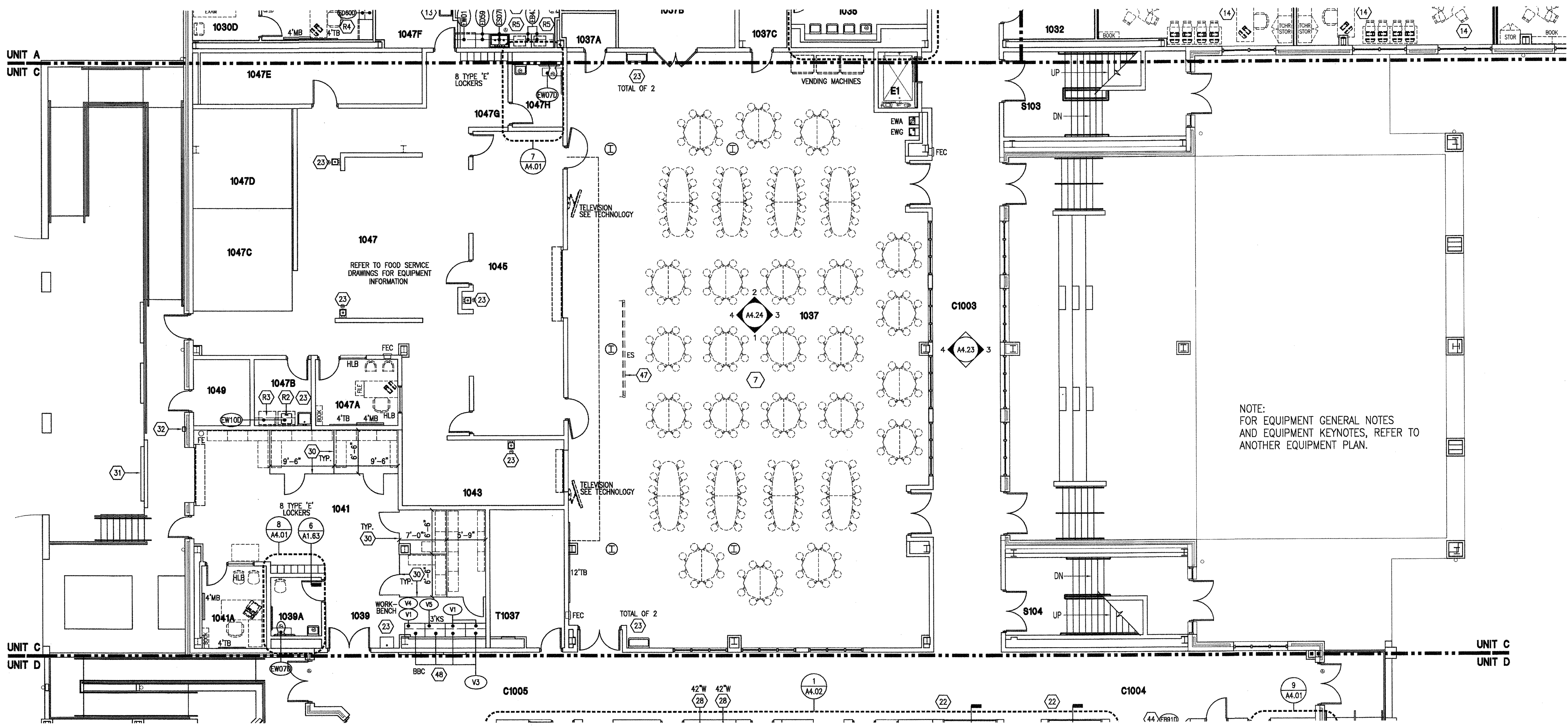
BID DOCUMENTS

11085

TITLE:
**1ST FLOOR UNIT C
EQUIPMENT PLAN**

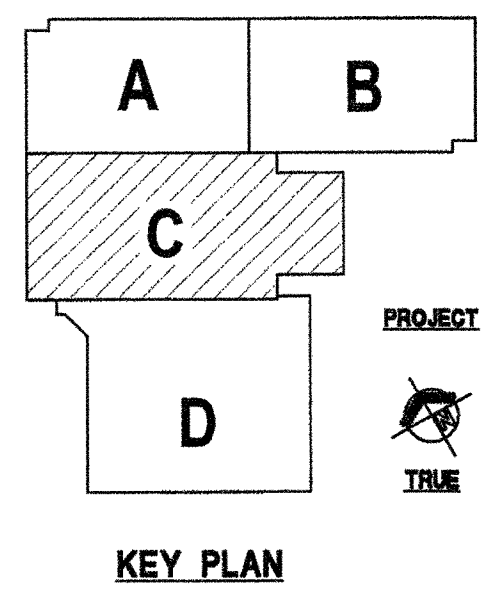
SHEET:

A1.53



NOTE:
FOR EQUIPMENT GENERAL NOTES
AND EQUIPMENT KEYNOTES, REFER TO
ANOTHER EQUIPMENT PLAN.

ROOM LEGEND		UNIT C 1ST FLOOR	
ROOM NO.	ROOM NAME	AREA	CLNG HT
1037	STUDENT DINING/COMMONS	4541 SF	VARIES
1039	MAINTENANCE & REPAIR AREA	467 SF	EXPOSED
1039A	RESTROOM	66 SF	10'-0"
1041	RECEIVING	517 SF	EXPOSED
1041A	OFF. A	118 SF	10'-0"
1043	DISHWASHING	231 SF	10'-0"
1045	SERVING	607 SF	10'-0"
1047	KITCHEN	1213 SF	10'-0"
1047A	KIT. OFF.	121 SF	10'-0"
1047B	LAUNDRY	83 SF	10'-0"
1047C	COOLER	225 SF	-
1047D	FREEZER	215 SF	-
1047E	DRY STORAGE	252 SF	10'-0"
1047G	LOCKERS	65 SF	10'-0"
1047H	RESTROOM	70 SF	10'-0"
1049	SPRINKLER	83 SF	EXPOSED
C1003	CORRIDOR	1175 SF	10'-0"
E1	ELEVATOR	48 SF	-
S103	STAIR	342 SF	VARIES
S104	STAIR	315 SF	VARIES
T1037	TECHNOLOGY	219 SF	10'-0"



VERIFICATION NOTE
CONTRACTOR SHALL VERIFY ALL DIMENSIONS AND CLEARANCES AND ALL EXISTING FIELD CONDITIONS BEFORE STARTING CONSTRUCTION. COMMENCEMENT OF WORK CONSTITUTES ACCEPTANCE OF CONDITIONS.
SHOULD DIFFERENT CONDITIONS BE ENCOUNTERED, CONTACT THE ARCHITECT BEFORE PROCEEDING WITH WORK.

1 UNIT C - EQUIPMENT PLAN - 1ST FLOOR
A1.53 SCALE: 1/8" = 1'-0"