

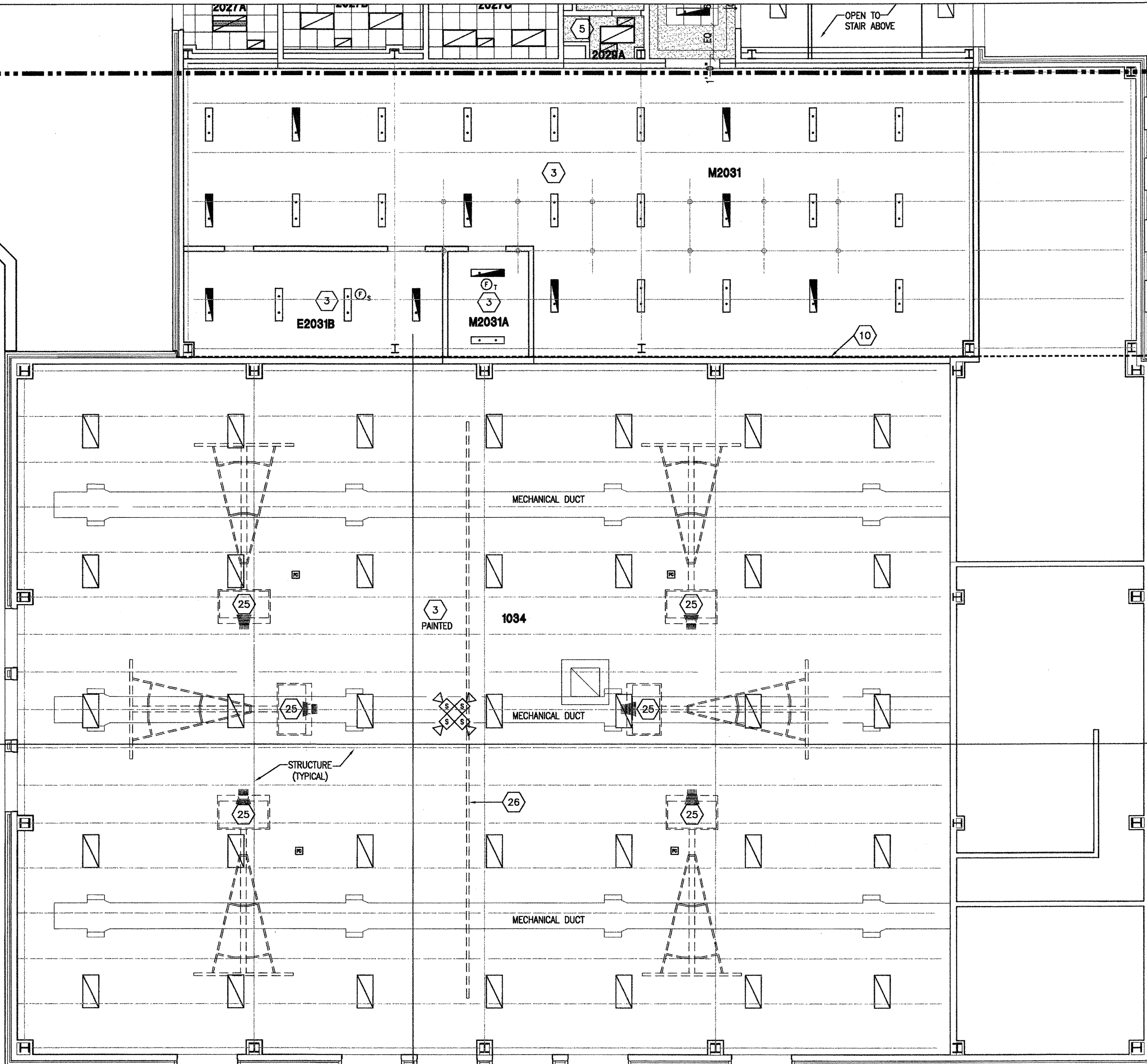
UNIT C
UNIT D

UNIT C
UNIT D

ROOM LEGEND		UNIT D 2ND FLOOR	
ROOM NO.	ROOM NAME	AREA	CLNG HT
E2031B	ELECTRICAL	372 SF	EXPOSED
M2031	MECHANICAL	2560 SF	EXPOSED
M2031A	BOILER ROOM	116 SF	EXPOSED

REFLECTED CEILING PLAN LEGEND

- 2x4 OR 2x2 ACOUSTICAL CEILING - REFER TO ROOM FINISH SCHEDULE FOR TYPE
- LIGHT FIXTURE - REFER TO ELECTRICAL DRAWINGS
- LIGHT FIXTURE - REFER TO ELECTRICAL DRAWINGS
- LIGHT FIXTURE - REFER TO ELECTRICAL DRAWINGS
- DIFFUSER - REFER TO MECHANICAL DRAWINGS
- DIFFUSER - REFER TO MECHANICAL DRAWINGS
- RETURN AIR GRILL - REFER TO MECHANICAL DRAWINGS
- SPEAKER - REFER TO ELECTRICAL DRAWINGS
- OCCUPANCY SENSOR - REFER TO ELECTRICAL DRAWINGS
- SMOKE DETECTOR - REFER TO ELECTRICAL DRAWINGS
- HEAT DETECTOR - REFER TO ELECTRICAL DRAWINGS
- CEILING MOUNTED EXIT LIGHT
- CEILING MOUNTED PROJECTOR - COORDINATE INSTALLATION OF VIDEO PROJECTOR WITH TECHNOLOGY CONTRACTOR
- CEILING MOUNTED WIRELESS ACCESS POINT
- CEILING MOUNTED INTERCOMMUNICATIONS LOUDSPEAKER
- CEILING MOUNTED SPECIALTY SOUND REINFORCEMENT SPEAKER
- CEILING MOUNTED MICROPHONE
- CEILING MOUNTED VIDEO SURVEILLANCE CAMERA
- CEILING MOUNTED MOTION DETECTOR
- CEILING MOUNTED DOOR ACCESS CONTROLLER JUNCTION BOX
- CABINET HEATER - REFER TO MECHANICAL DRAWINGS
- INDICATES GWB BULKHEAD/CEILING
- INDICATES PLASTER CEILING/SOFTIT
- INDICATES PROJECTION SCREEN - REFER TO EQUIPMENT DRAWINGS
- 2" SOFFIT VENT (CONT). TERMINATE 8" FROM FACE OF WALL CONSTRUCTION



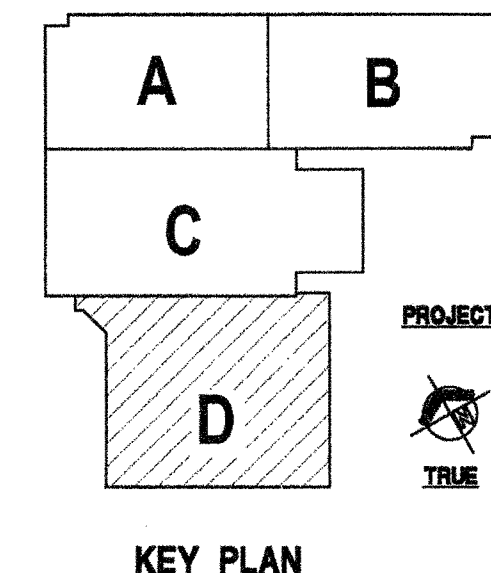
GENERAL NOTES

- A. THE ARCHITECTURAL REFLECTED CEILING PLANS GOVERN THE LAYOUT OF ALL CEILING ELEMENTS/PENETRATIONS.
- B. REFER TO MASTER PLANS/CODE PLANS FOR THE LOCATION OF RATED WALL CONSTRUCTION AND WALLS THAT EXTEND TO ROOF DECK OR FLOOR STRUCTURE ABOVE.
- C. REFER TO ROOM FINISH SCHEDULE FOR SPECIFIC CEILING TYPES.
- D. BULKHEAD FRAMING SHALL BE ATTACHED TO STRUCTURAL FRAMING AND NOT TO ROOF DECK. PROVIDE REVEAL DRYWALL TRIM AT ALL LOCATIONS WHERE GYPSUM WALL BOARD (GWB) ABUTS A DISSIMILAR MATERIAL. TYPICAL UNLESS NOTED OTHERWISE. REFER TO DETAIL 1-A7.12.

REFLECTED PLAN KEY NOTES

1. REFER TO SECOND FLOOR FOR CEILING, SLOPED GLAZING SKYLIGHT - REFER TO ROOF PLAN AND WALL SECTIONS.
2. EXPOSED STRUCTURE IN THIS ROOM.
3. NO NEW CEILING FINISH REQUIRED AT FREEZER/COOLER AREA.
4. 5/8" GWB CEILING ON 3 5/8" STEEL STUDS AT 16" O.C. SUSPEND FROM STRUCTURE AS REQUIRED.
5. LINE INDICATES CANOPY AND STRUCTURE REFER TO SITE PLAN CANOPY DRAWINGS.
6. TUBULAR DAYLIGHTING DIFFUSER - REFER TO ROOF PLAN AND PROJECT MANUAL.
7. SUSPENDED PLASTER SOFFIT - 3/4" PORTLAND CEMENT STUCCO ON METAL LATH ON RUNNERS SUSPENDED FROM STRUCTURE ABOVE. HEIGHT AS INDICATED.
8. CONTROL JOINT AT SUSPENDED PLASTER SOFFIT REFER TO PROJECT MANUAL.
9. CONTINUOUS EXPANSION JOINT AT CEILING - SEE DETAIL 2-A7.13.
10. CMU LINTEL (PAINT) BOTTOM OF LINTEL HEIGHT AS INDICATED - REFER TO STRUCTURAL DRAWINGS.
11. LUMINOUS CEILING SYSTEM AND GWB BULKHEAD REFER TO PROJECT MANUAL AND DETAIL 10-A7.12.
12. ACRYLIC EGGRATE CEILING AT DISPLAY CASE REFER TO DETAIL 7-A1.64.
13. GWB BULKHEAD - REFER TO DETAIL 2-A7.12.
14. GWB BULKHEAD - REFER TO DETAIL 3-A7.12.
15. GWB BULKHEAD - REFER TO DETAIL 4-A7.12.
16. GWB BULKHEAD - REFER TO DETAIL 5-A7.12.
17. GWB BULKHEAD - REFER TO DETAIL 6-A7.12.
18. GWB BULKHEAD - REFER TO DETAIL 7-A7.12.
19. GWB BULKHEAD - REFER TO DETAIL 8-A7.12.
20. GWB BULKHEAD - REFER TO DETAIL 9-A7.12.
21. GWB BULKHEAD - REFER TO DETAIL 11-A7.12.
22. GWB BULKHEAD - REFER TO DETAIL 12-A7.12.
23. GWB BULKHEAD - REFER TO DETAIL 13-A7.12.
24. FORWARD FOLDING BASKETBALL BACKSTOP REFER TO EQUIPMENT DRAWINGS.
25. GYMNASIUM DIVIDER CURTAIN - REFER TO EQUIPMENT DRAWINGS.
26. OPERABLE PARTITION WALL - REFER TO PROJECT MANUAL AND DETAIL 1-A7.13.
27. SUSPENDED ACOUSTICAL CEILING. HEIGHT AS INDICATED - PROVIDE 8" SUSPENSION (PERIMETER) TRIM AROUND EACH SUSPENDED GROUPING OF PANELS. PROVIDE 6" ACOUSTICAL INSULATION LAYING ON TOP OF PANELS AND EXTENDING TO PERIMETER TRIM.
28. COORDINATE CEILING TERMINATION WITH COOLER/FREEZER CONTR.
29. GWB BULKHEAD - REFER TO DETAIL 3-A7.13.
30. PROVIDED 1 HOUR RATED CEILING IN THIS ROOM.
31. (2) LAYERS OF 5/8" TYPE "X" GWB CEILING ON 6" STEEL STUDS AT 16" O.C. AND SECURED TO WALLS AS REQUIRED.

1 UNIT D - SECOND FLOOR REFLECTED CEILING PLAN
A7.08 SCALE: 1/8" = 1'-0"

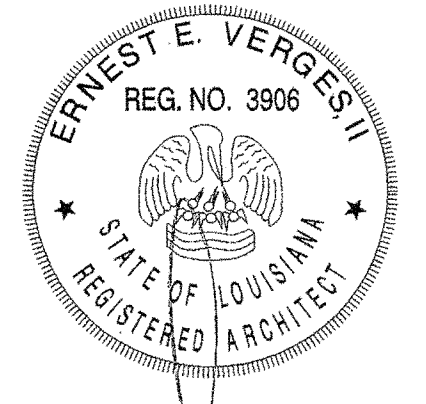


VERIFICATION NOTE
CONTRACTOR SHALL VERIFY ALL DIMENSIONS AND CLEARANCES AND ALL EXISTING FIELD CONDITIONS BEFORE STARTING CONSTRUCTION. COMMENCEMENT OF WORK CONSTITUTES ACCEPTANCE OF CONDITIONS. SHOULD DIFFERENT CONDITIONS BE ENCOUNTERED, CONTACT THE ARCHITECT BEFORE PROCEEDING WITH WORK.



320 N. Carrollton Avenue, Suite 100
New Orleans, Louisiana 70119
t. 504.488.7739 f. 504.488.7743

© copyright 2012



NEW 3 SECTION ELEMENTARY SCHOOL
 AT FISK-HOWARD SCHOOL
 RECOVERY SCHOOL DISTRICT
 211 S. LOPEZ STREET
 NEW ORLEANS, LOUISIANA 70119

DATE ISSUED: 7 DECEMBER, 2012

REVISED: _____
 REVISED: _____
 REVISED: _____
 REVISED: _____
 DRAWN BY: MKS
 CHECKED BY: _____
 PHASE:

BID DOCUMENTS

11085

TITLE:
UNIT D SECOND FLOOR REFLECTED CEILING

SHEET:

A7.08