

**NEW 3 SECTION ELEMENTARY SCHOOL  
AT FISK-HOWARD SCHOOL  
RECOVERY SCHOOL DISTRICT**

211 S. LOPEZ STREET NEW ORLEANS, LOUISIANA 70119

DATE ISSUED: 7 DECEMBER, 2012  
REVISED:  
REVISED:  
REVISED:  
DRAWN BY: WFD  
CHECKED BY: JAS  
PHASE:

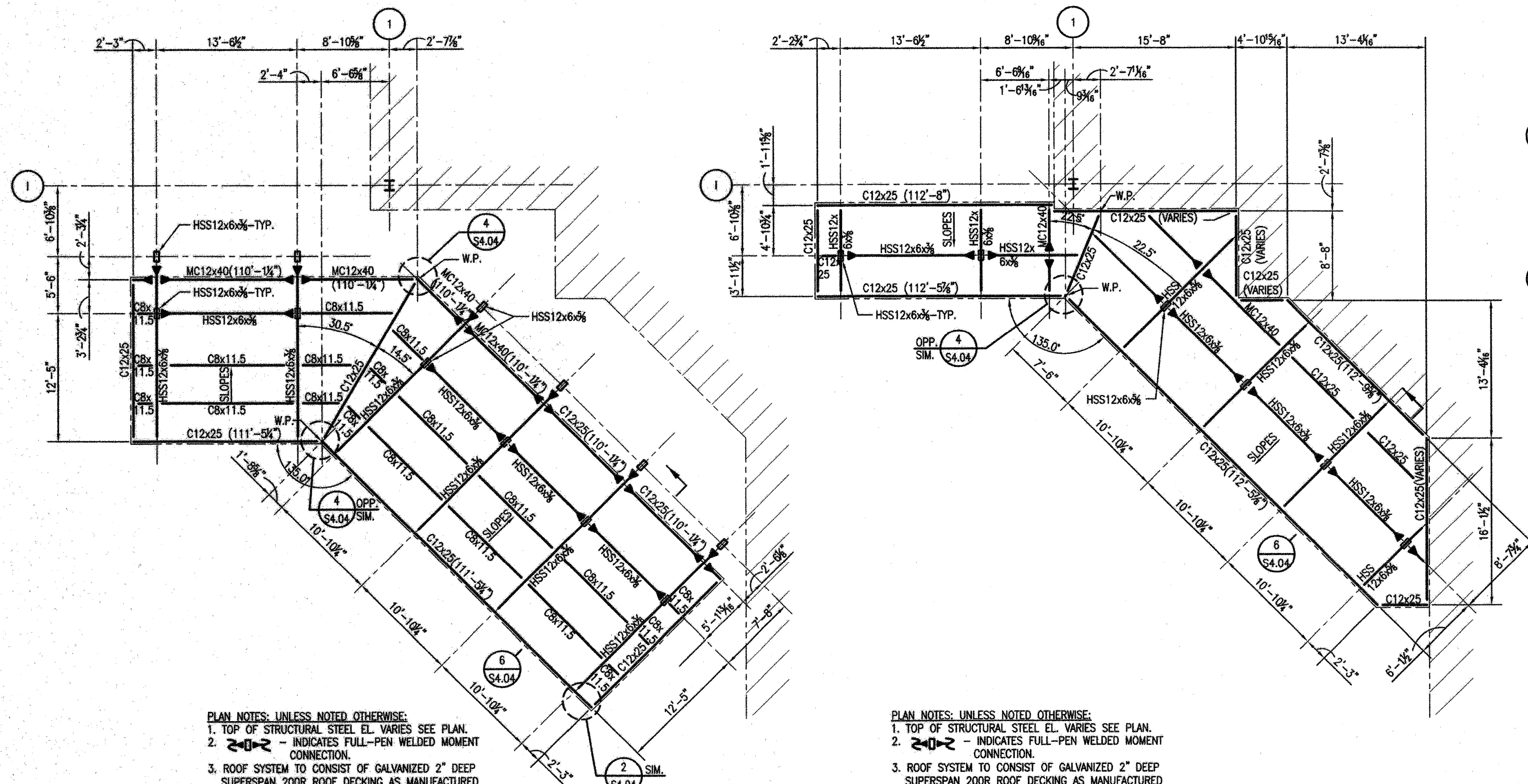
BID DOCUMENTS

11085

TITLE: FENCE FDN. & CANOPIES FRAMING PLAN

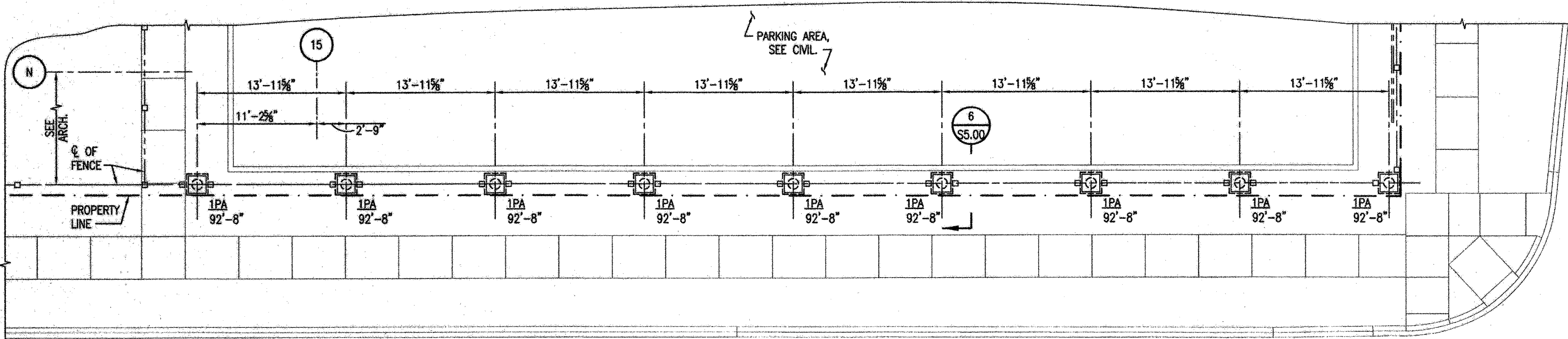
SHEET:

**S1.16**

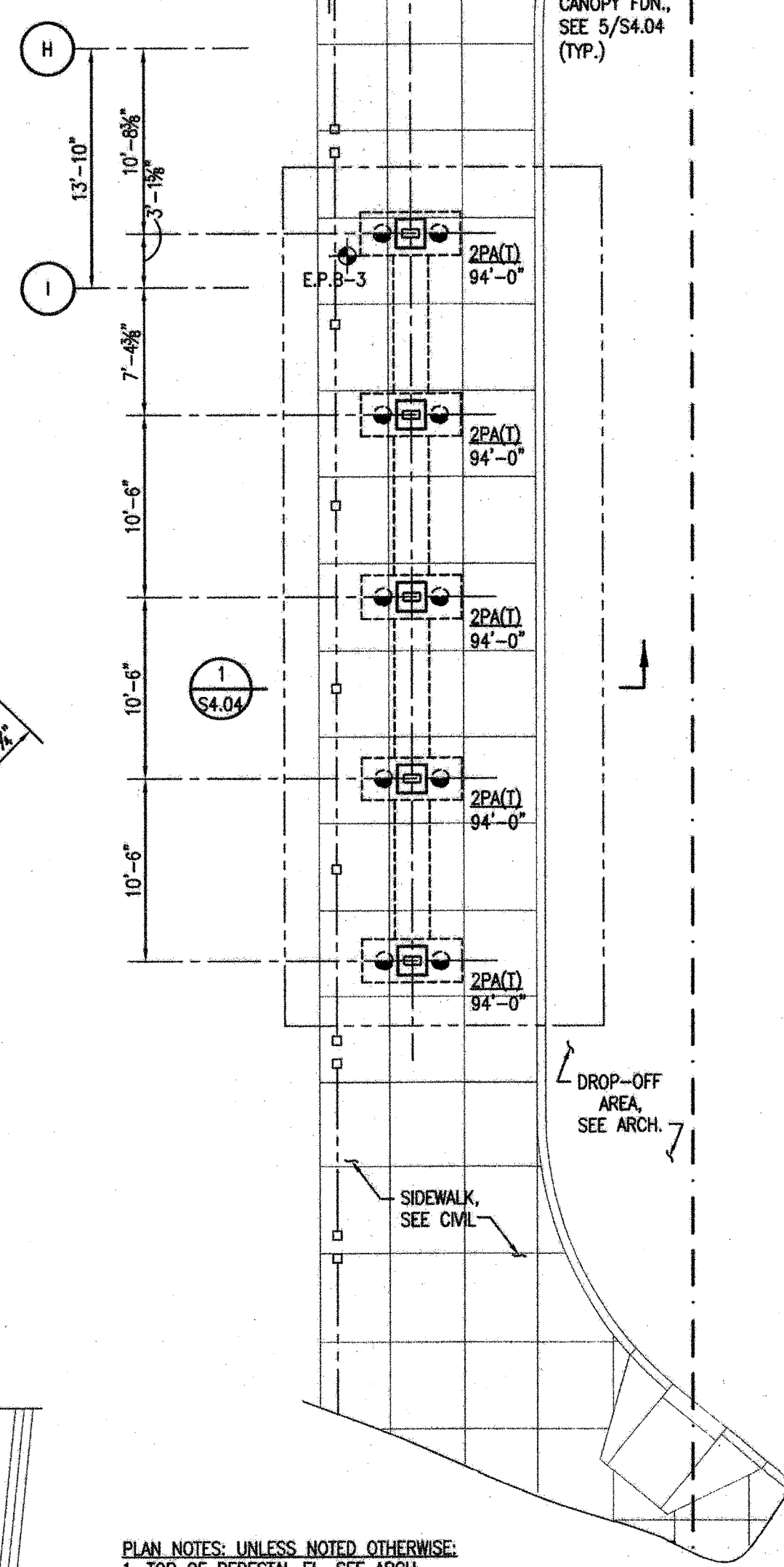


**1** BUS DROP-OFF CANOPY LOWER  
S1.16 ROOF FRAMING PLAN 1/8"=1'-0"

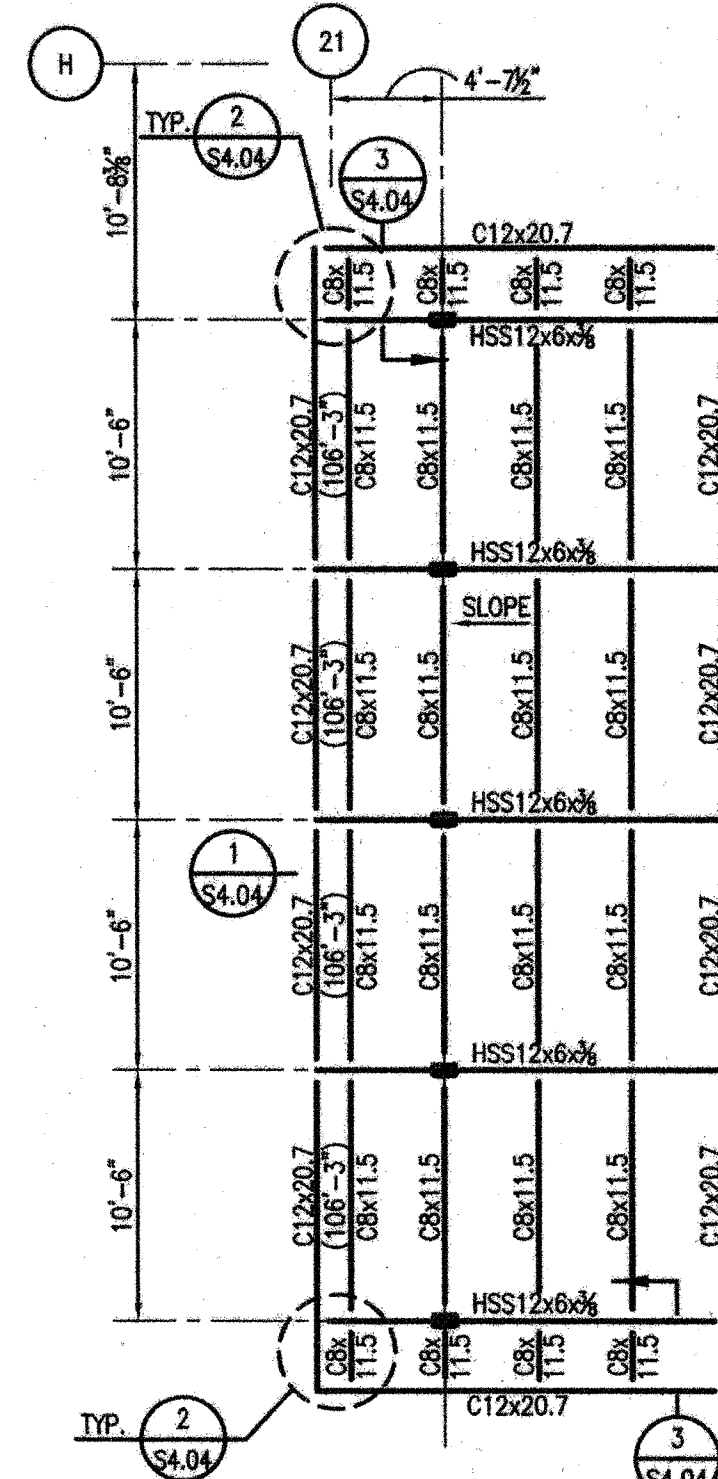
**2** BUS DROP-OFF CANOPY UPPER  
S1.16 ROOF FRAMING PLAN 1/8"=1'-0"



**3** PARTIAL PLAN-FENCE  
S1.16 1/8"=1'-0"



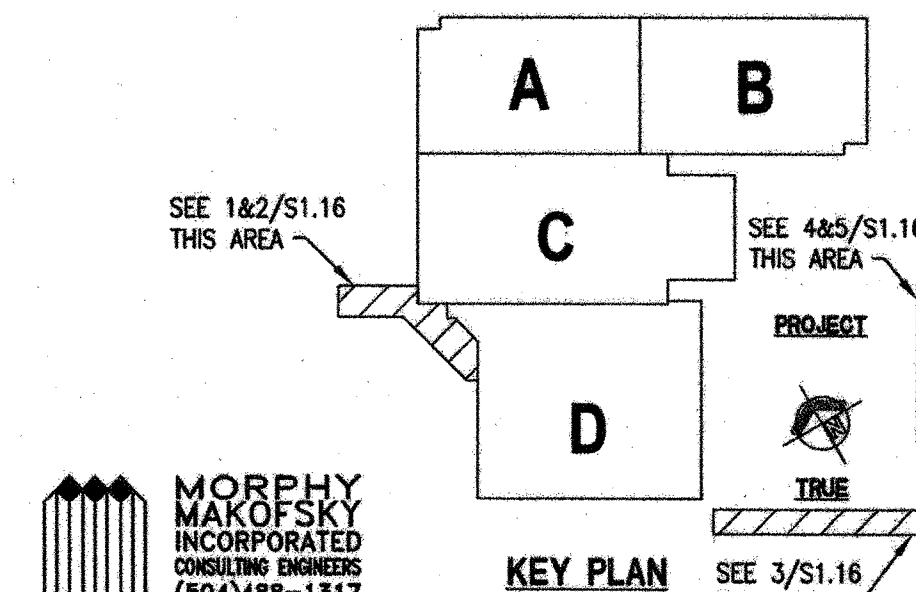
**4** CARPOOL CANOPY  
S1.16 FOUNDATION FRAMING PLAN 1/8"=1'-0"



**5** CARPOOL CANOPY  
S1.16 ROOF FRAMING PLAN 1/8"=1'-0"

PLAN NOTES: UNLESS NOTED OTHERWISE:  
1. TOP OF STEEL EL. VARIES. SEE PLAN.  
2. ROOF SYSTEM TO CONSIST OF GALVANIZED 2" DEEP SUPERSPAN 200R ROOF DECKING AS MANUFACTURED BY LOADMASTER OR APPROVED EQUAL.  
A. DEPTH: 2"  
B. GAGE: 20 (DESIGN THICKNESS: 0.0358")  
C. MINIMUM SECTION MODULUS (POSITIVE): 0.343 IN<sup>3</sup>/IN PER FT.  
D. MINIMUM SECTION MODULUS (NEGATIVE): 0.306 IN<sup>3</sup>/IN PER FT.  
E. MINIMUM MOMENT OF INERTIA (POSITIVE): 0.478 IN<sup>4</sup>/IN PER FT.  
F. MINIMUM MOMENT OF INERTIA (NEGATIVE): 0.410 IN<sup>4</sup>/IN PER FT.  
G. ALLOWABLE STRESS: 24 KSI  
H. DECK FASTENING PATTERN  
1. SUPPORT FASTENERS: #12 SCREWS  
2. FASTENER PATTERN: 24/6  
3. SIDELAP FASTENER: #12 SCREWS  
4. SIDELAP FASTENERS PER SPAN: 24" O.C. MAX.  
3. ALL STEEL SHALL BE HOT-DIPPED GALVANIZED AFTER FABRICATION SEE GENERAL NOTE 7C.

PLAN NOTES: UNLESS NOTED OTHERWISE:  
1. TOP OF PEDESTAL EL. SEE ARCH.  
2. INDICATES 2 PILE CAP WITH TOP OF CAP ELEVATION AT 94'-0". (PILING AT PILE CAPS TO BE TREATED TIMBER PILES, SEE GENERAL NOTE 1A)



MORPHY  
MAKOFSKY  
INCORPORATED  
CONSULTING ENGINEERS  
(504)488-1317  
JOB NO. 12053

KEY PLAN

SEE 3/S1.16 THIS AREA